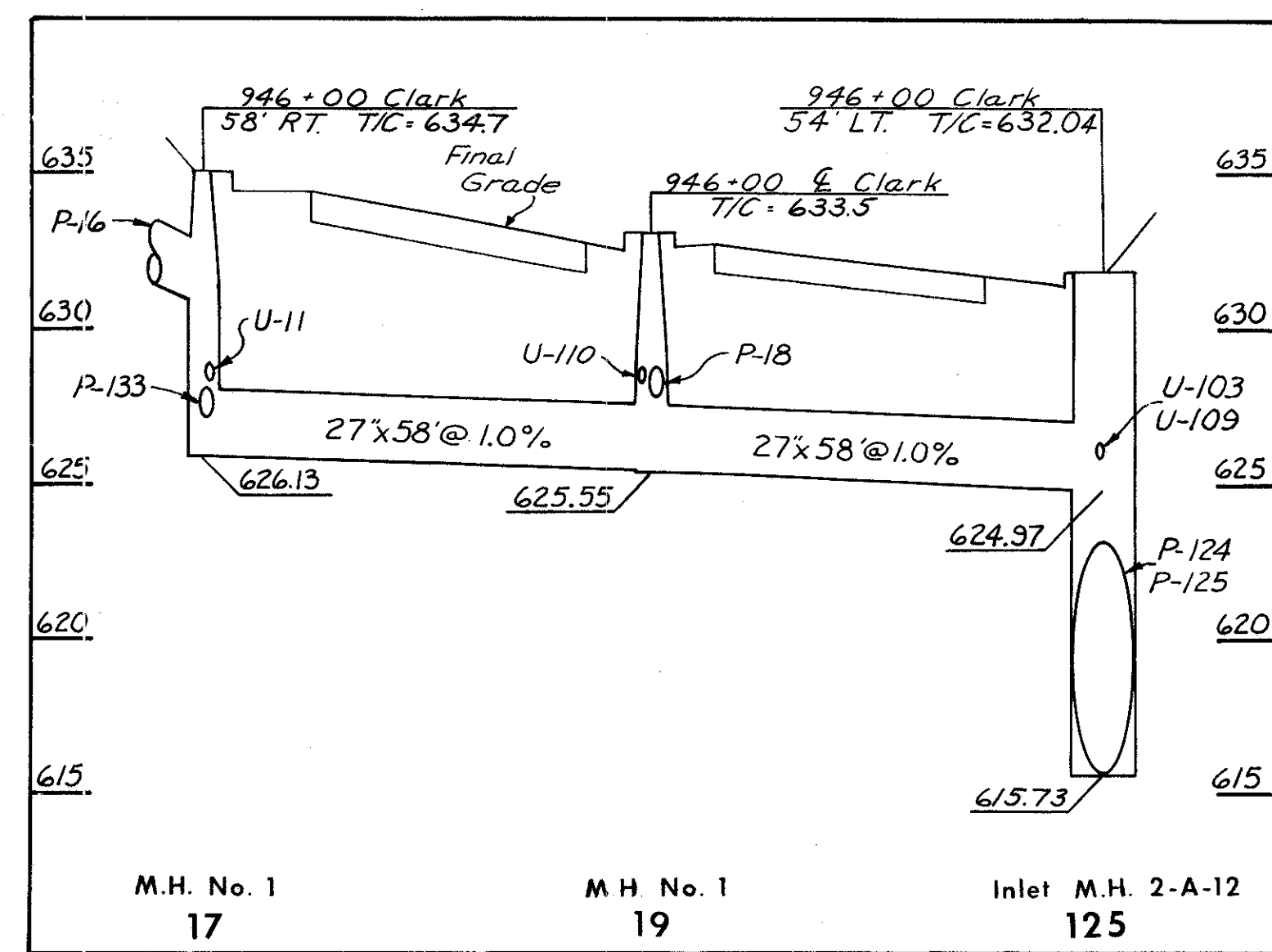
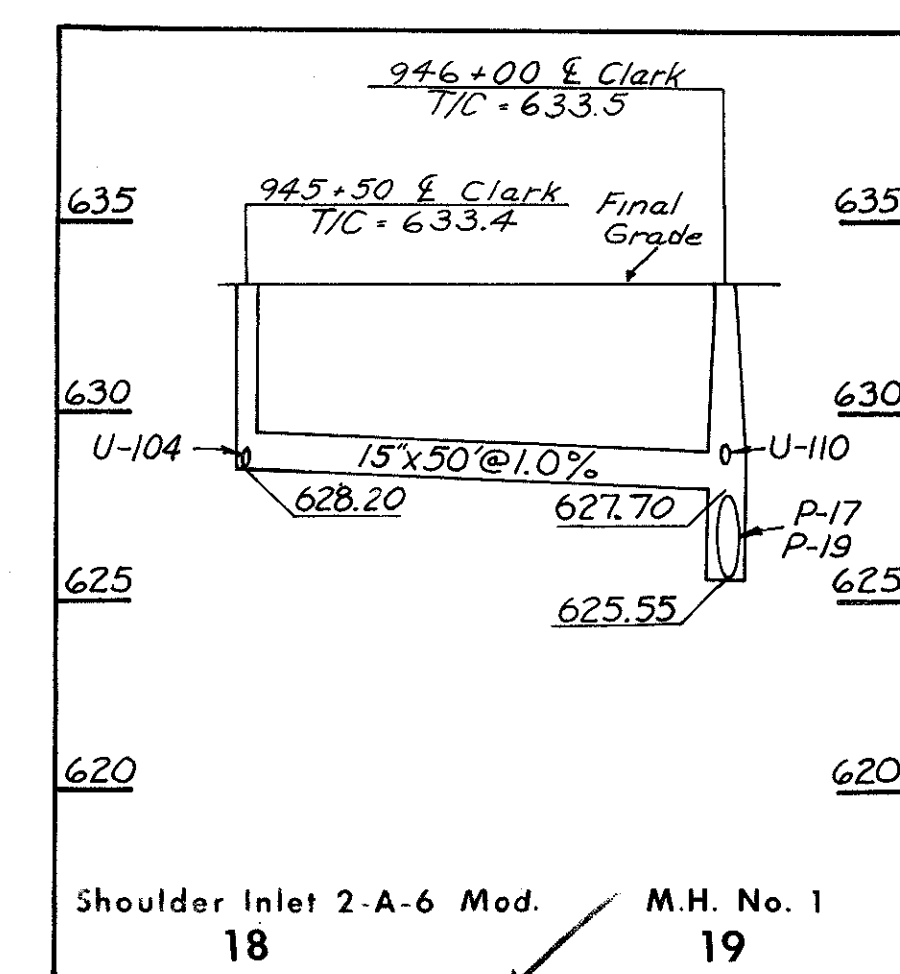


CUYAHOGA COUNTY  
CITY OF CLEVELAND  
MEDINA-CLARK INTERCHANGE  
CUY-71-18.54  
CUY-90-13.81

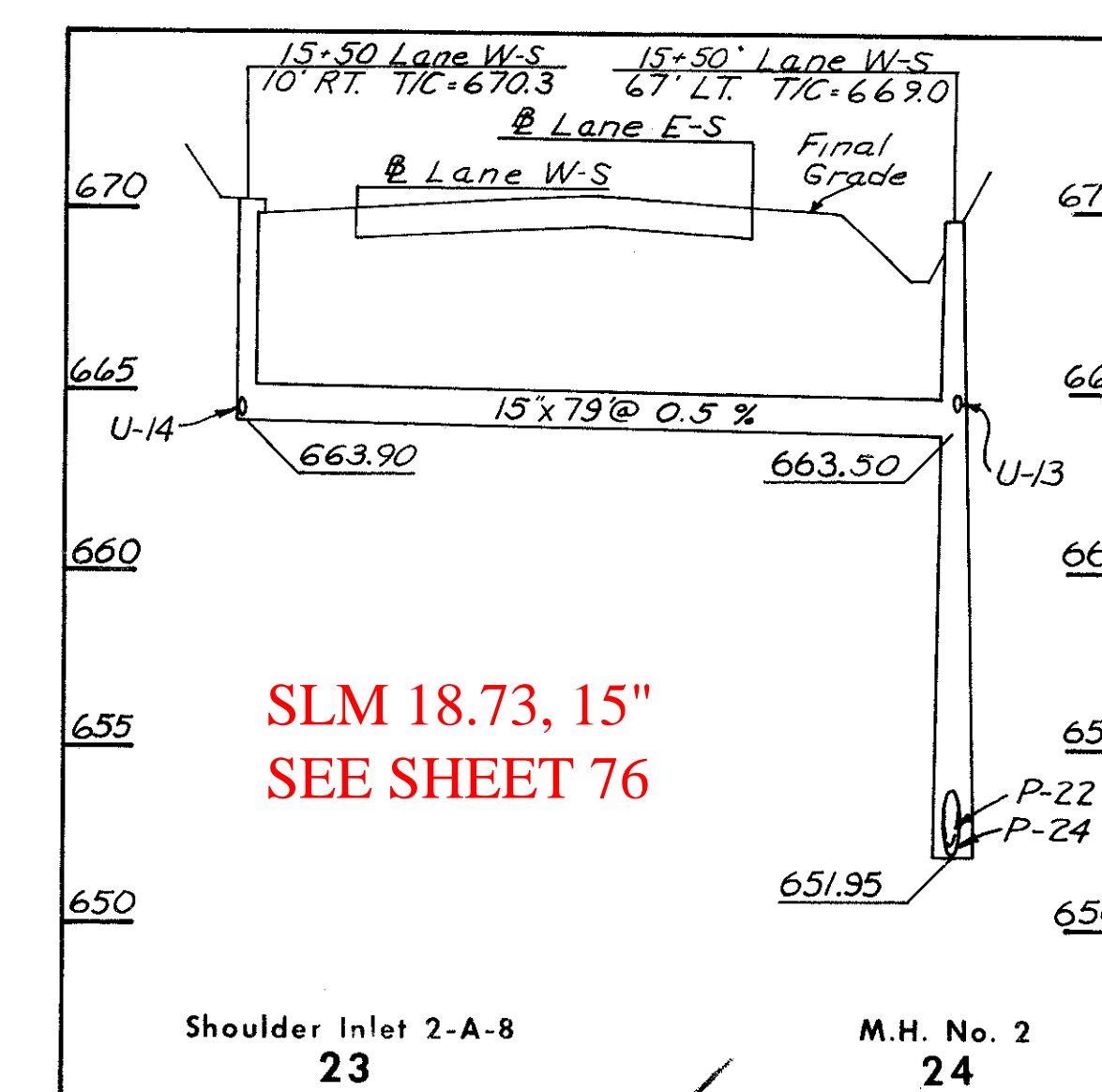


**P-17**  
CLASS B-1  
SLM 0.24, 27"  
SEE SHEET 80

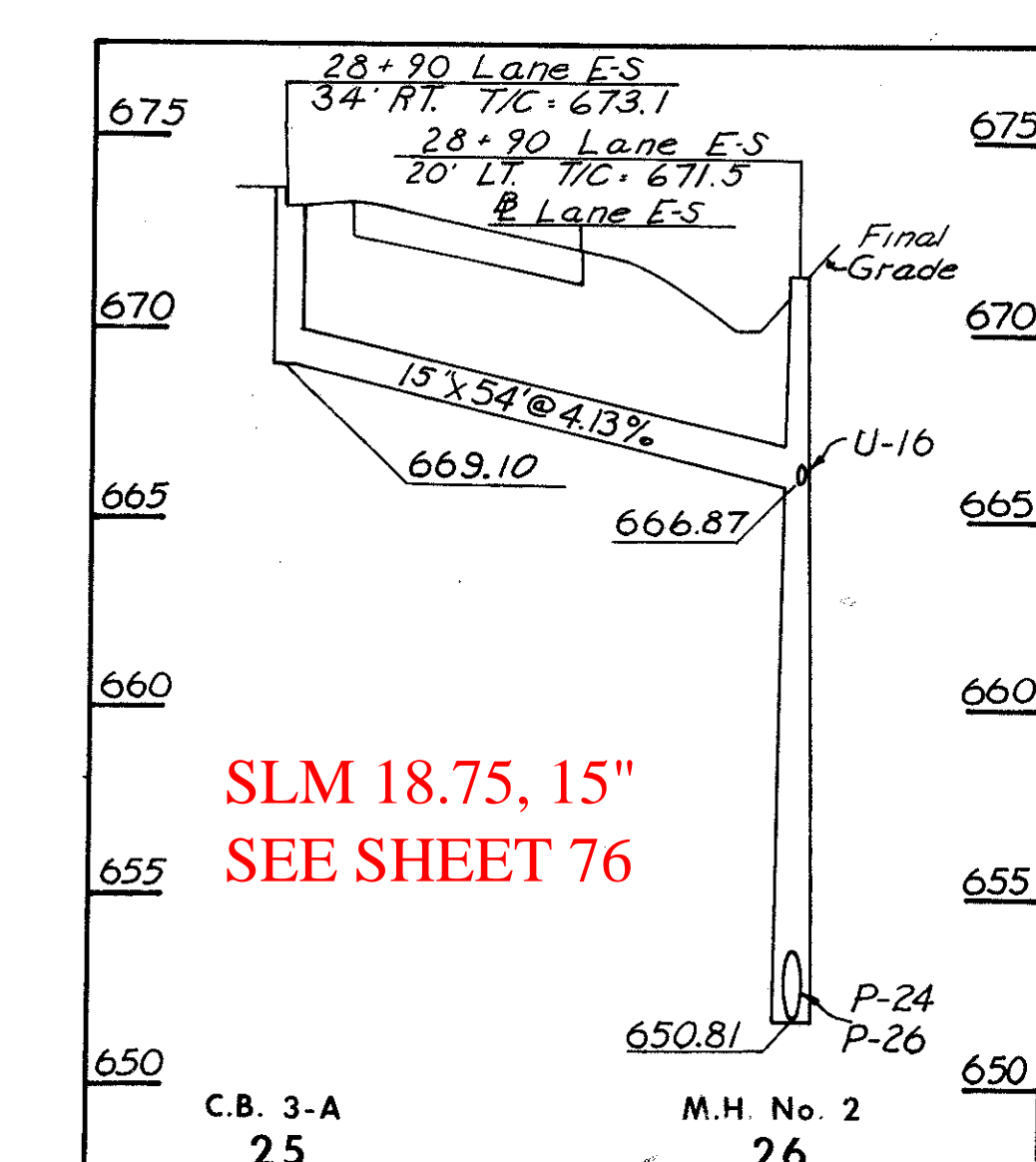
**P-19**  
CLASS B-1  
SLM 0.24, 27"  
SEE SHEET 80



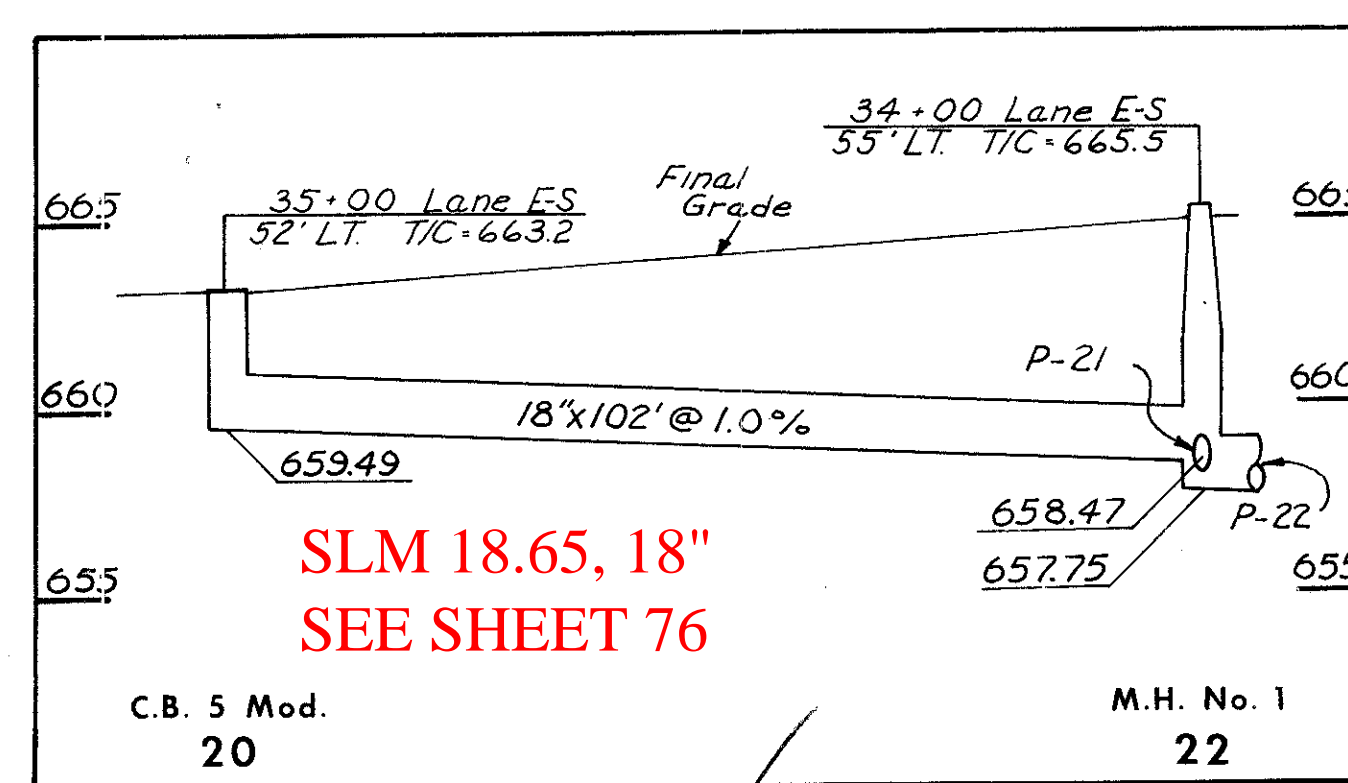
**P-18**  
CLASS E-1  
SLM 0.24, 15"  
SEE SHEET 80



**P-23**  
CLASS B-1

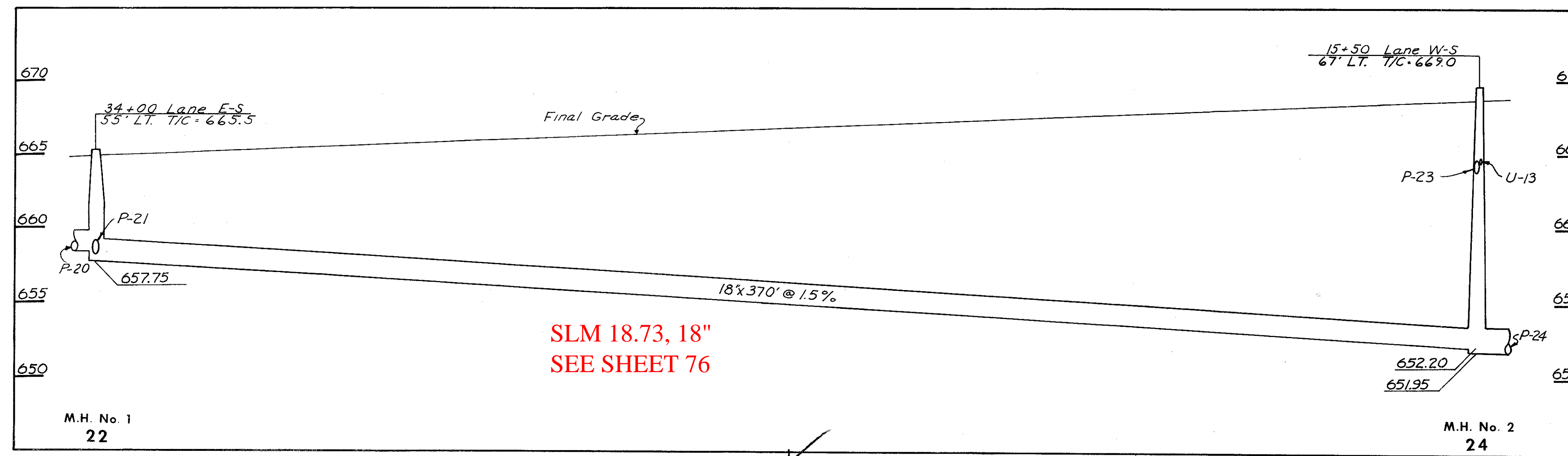


**P-25**  
CLASS B-1



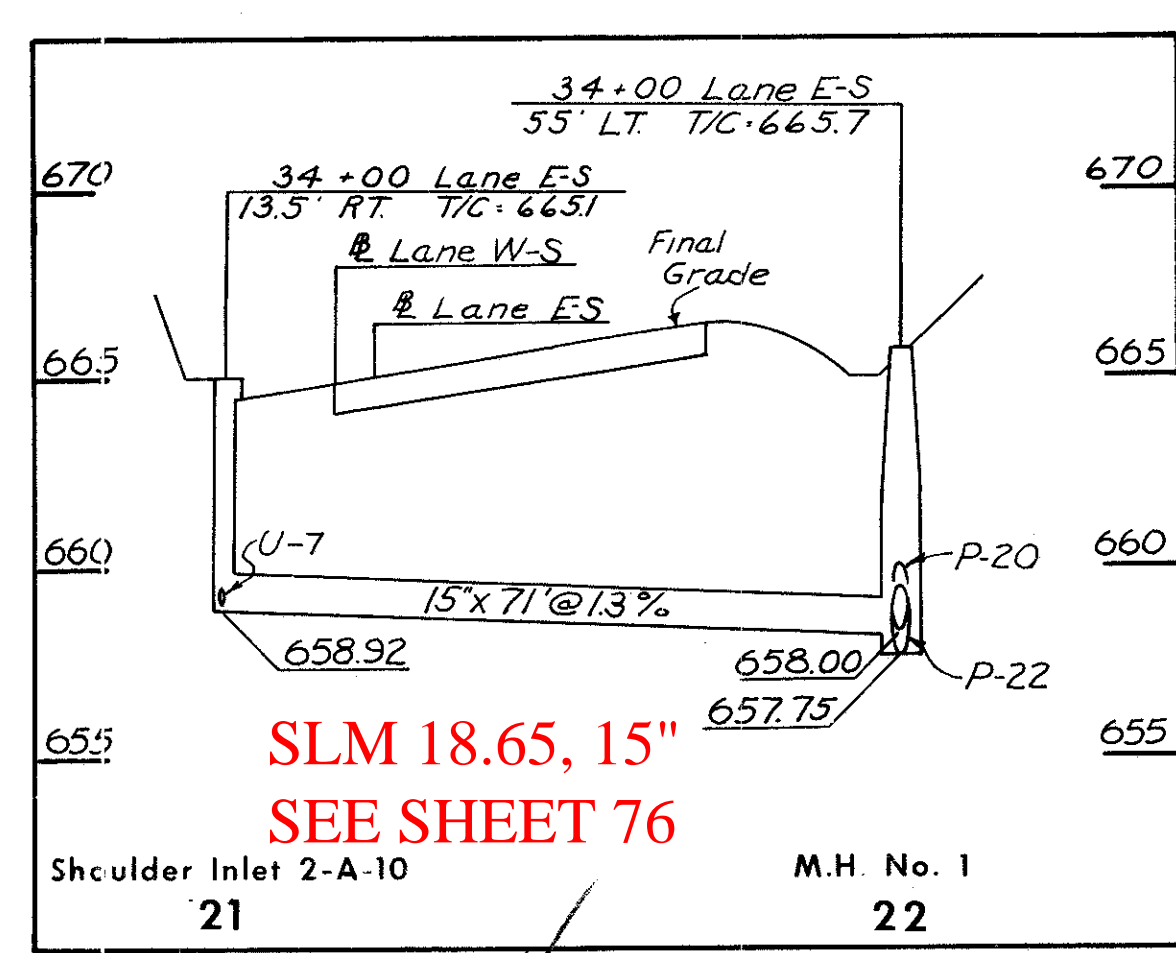
SLM 18.65, 18"  
SEE SHEET 76

**P-20**  
CLASS E-1



SLM 18.73, 18"  
SEE SHEET 76

**P-22**  
CLASS E-1  
Sec. M-6.6(c)



SLM 18.65, 15"  
SEE SHEET 76

**P-21**  
CLASS B-1

ESTIMATED QUANTITIES

CODE	LOCATION	I-8 STRUCTURES						
		Shoulder Inlet 2-A-6 Mod.	Shoulder Inlet 2-A-8	Shoulder Inlet 2-A-10	C.B. 3-A	C.B. 5 Mod.	M.H. No. 1	M.H. No. 2
17	946+00 Clark Freeway 38' Rt.						1	
18	945+50 Clark Freeway E	1						
19	946+00 Clark Freeway E						1	
20	35+00 Lane E-S 52' Lt.					1		
21	34+00 Lane E-S 13.5' Rt.			1				
22	34+00 Lane E-S 55' Lt.						1	
23	15+50 Lane W-S 10' Rt.		1					
24	15+50 Lane W-S 67' Lt.							1
25	28+90 Lane E-S 34' Rt.				1			
26	28+90 Lane E-S 20' Lt.							1
	CUY-71-18.54 TOTALS	1	1	1	1	1	3	2

CODE	ROADWAY	INLET CODE		I-1 PIPE				
		FROM	TO	CLASS B-1	CLASS B-1	CLASS E-1	CLASS E-1 Sec. M-6.6(c)	Class E-1
P-17	Clark Freeway	17	19	15"	27"	18"		
P-18	Clark Freeway	18	19		58"			50"
P-19	Clark Freeway	19	125		58"			
P-20	LANE E-S	20	22			102"		
P-21	LANE E-S	21	22		71"			
P-22	LANE E-S	22	24				370"	
P-23	LANE W-S	23	24		79"			
P-25	LANE E-S	25	26		54"			
	CUY-71-18.54 TOTALS			204"	116"	102"	370"	50"