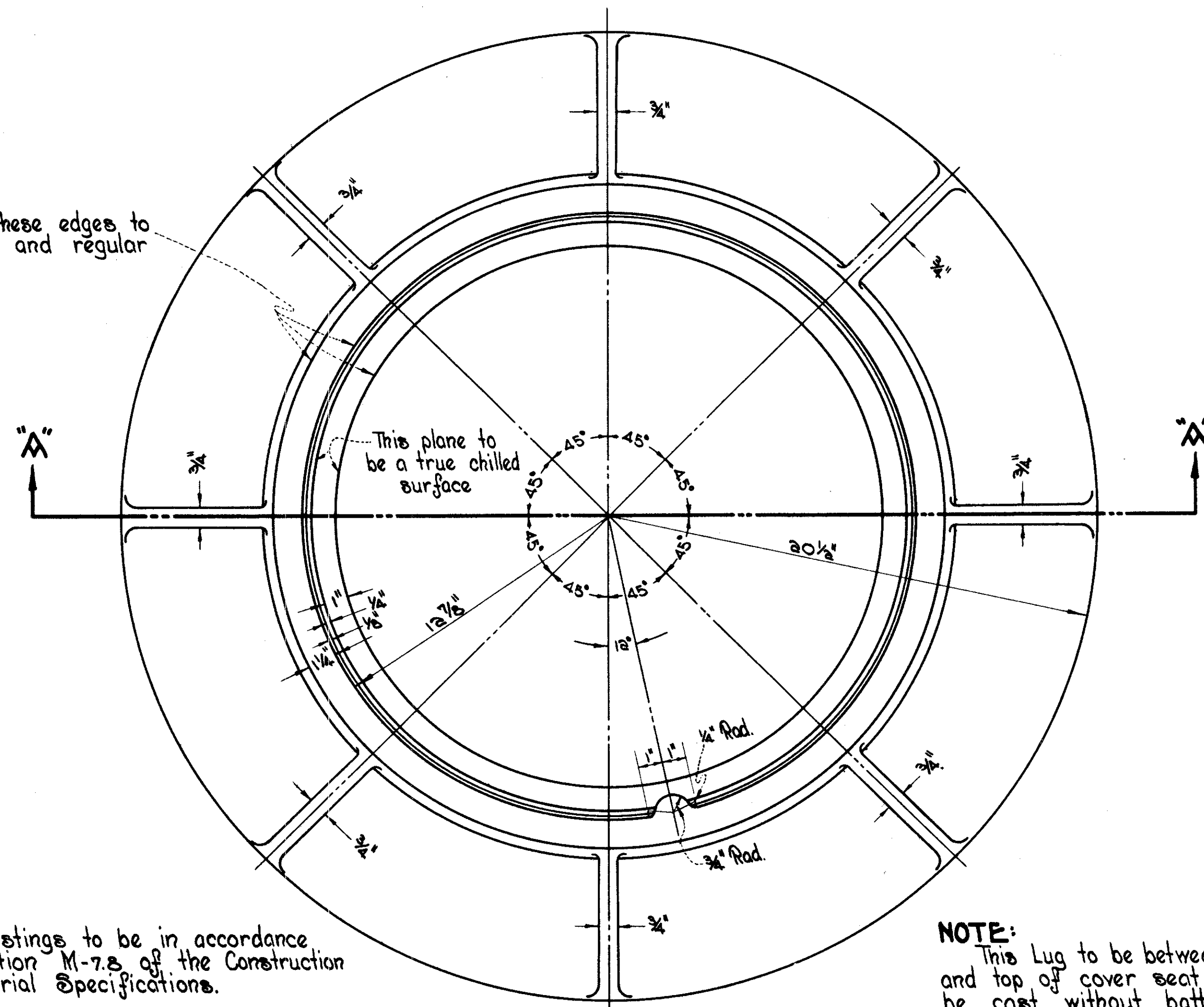


# SPECIAL MANHOLE FRAME

STANDARD CITY TYPE

Scale 3" = 1'-0"

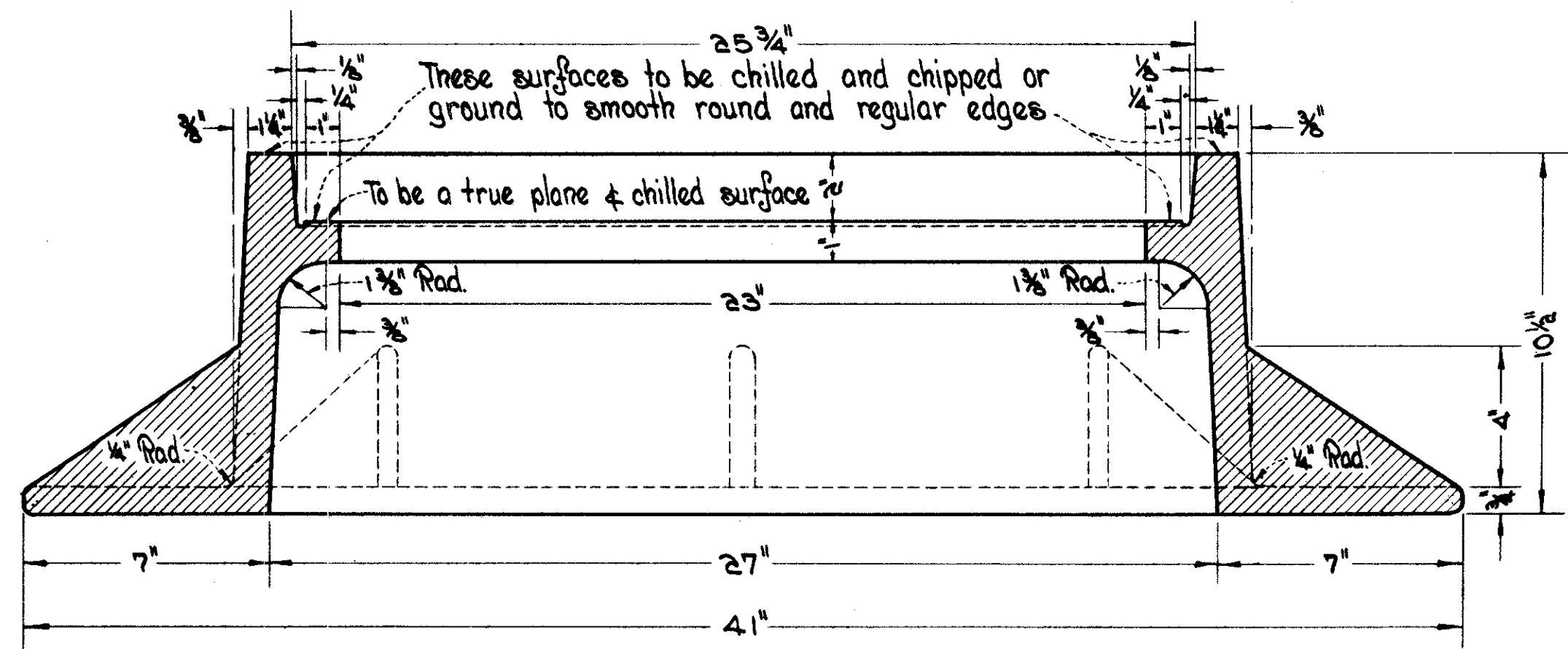
Grind or Chip these edges to smooth round and regular condition



PLAN

NOTE:- All castings to be in accordance with Section M-7.5 of the Construction and Material Specifications.

NOTE: This Lug to be between top of frame and top of cover seat only and shall be cast without batter.



SECTION "A-A"

SCALE \_\_\_\_\_ HOWARD, NEEDLES, TAMMEN & BERGENDOFF  
 MADE # DATE \_\_\_\_\_ CONSULTING ENGINEERS  
 TRCD: DATE \_\_\_\_\_ KANSAS CITY CLEVELAND NEW YORK  
 CKD: DATE \_\_\_\_\_

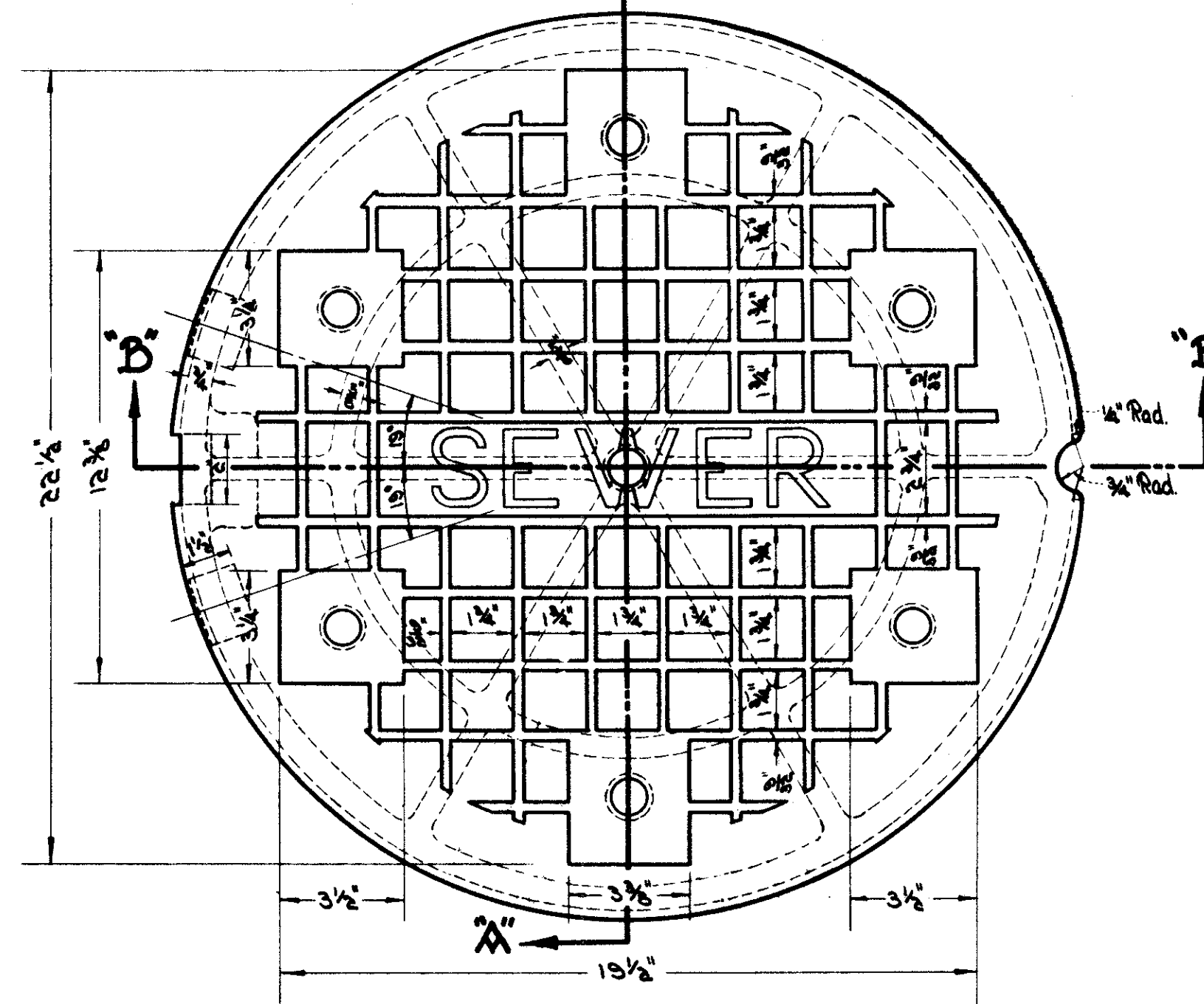
\* Reproduced from City of Cleveland Standard Drawing.

Weight of Frame 400 lbs. Min.

# SPECIAL COVER

STANDARD CITY TYPE

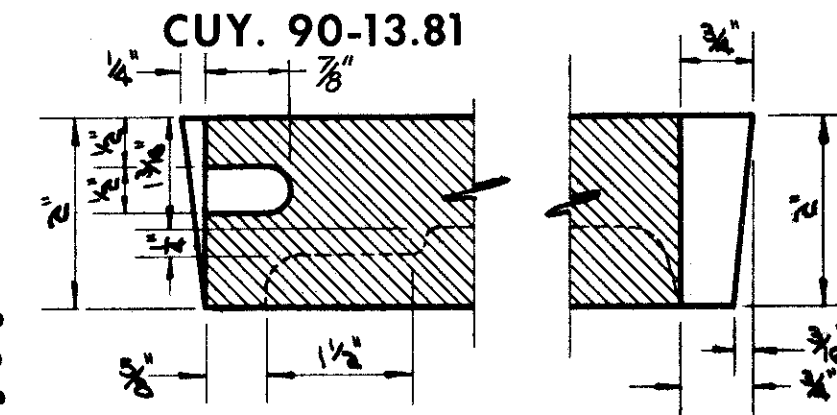
Scale 3" = 1'-0"



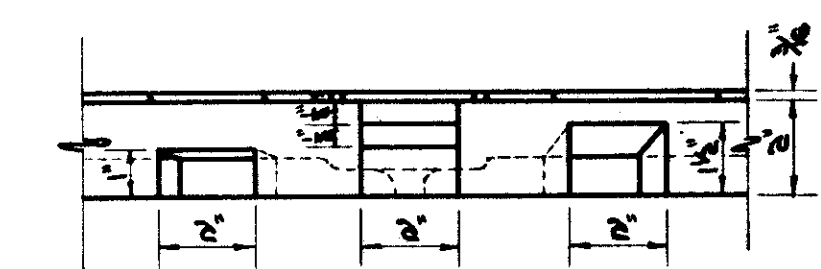
PLAN

FED. RD. DIVISION	STATE	PROJECT	118
2	OHIO		478

CUYAHOGA COUNTY  
 CITY OF CLEVELAND  
 MEDINA - CLARK INTERCHANGE  
 CUY. 71-18.54  
 CUY. 90-13.81



PART SECTION "B-B"  
 Scale 1/2" = 1"



SIDE ELEVATION OF NOTCHES

Weight of Cover 135 lbs.

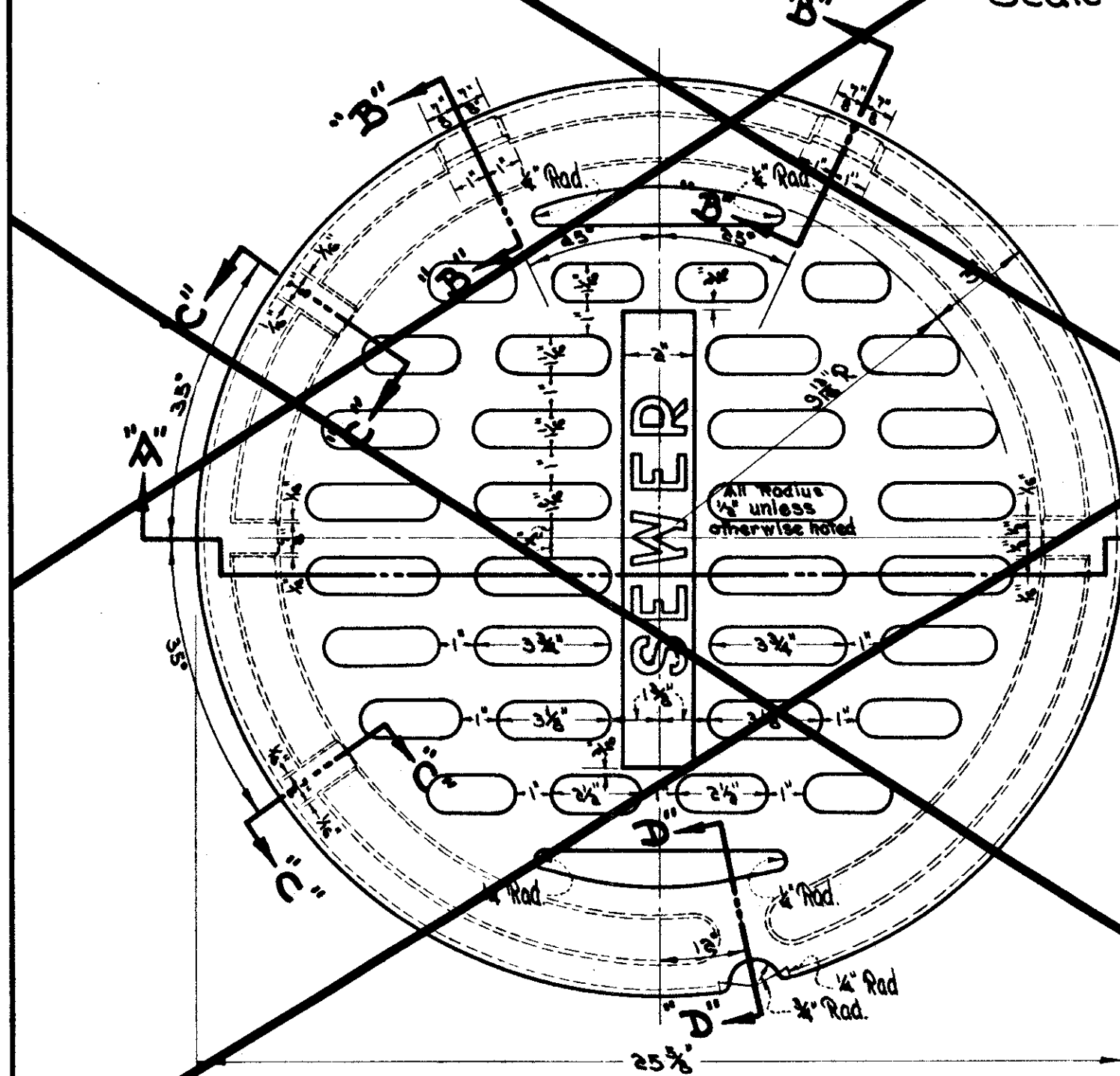
SECTION "A-A"

This surface to be chilled and chipped or ground to smooth round and regular edges.

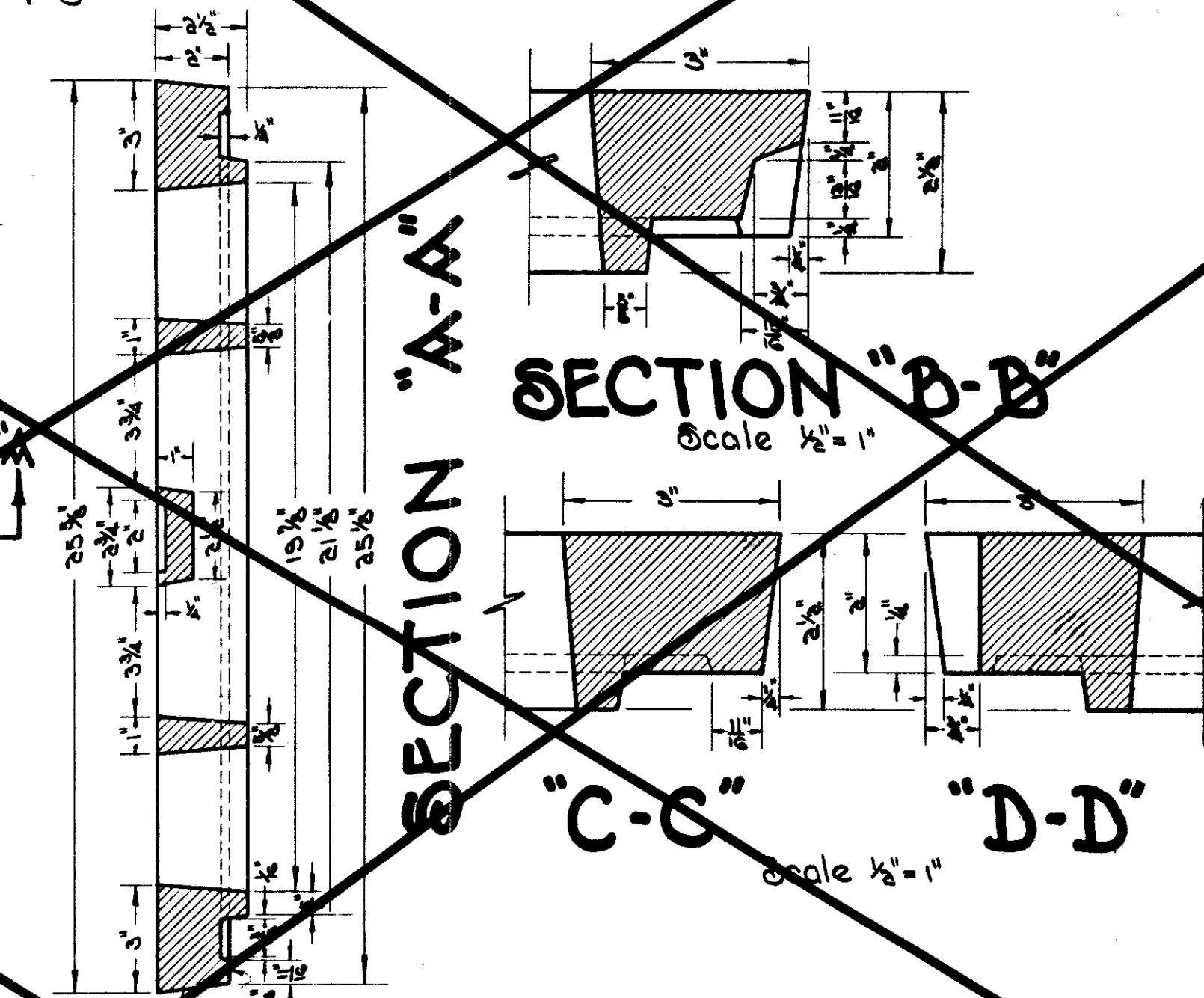
# SPECIAL GRATED COVER

STANDARD CITY TYPE

Scale 3" = 1'-0"



PLAN



SECTION "B-B"  
 Scale 1/2" = 1"

SECTION "C-C" SECTION "D-D"  
 Scale 1/2" = 1"

This surface to be chilled & chipped or ground to smooth round regular edges.  
 This surface shall be straight and smooth.

MISCELLANEOUS DETAILS