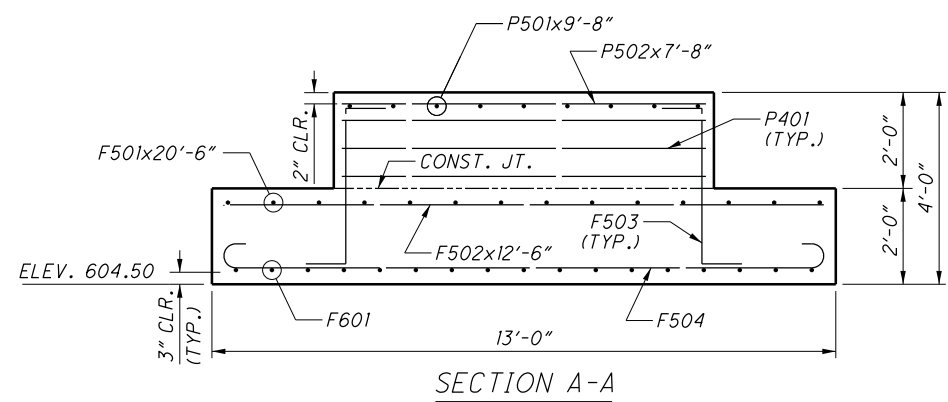
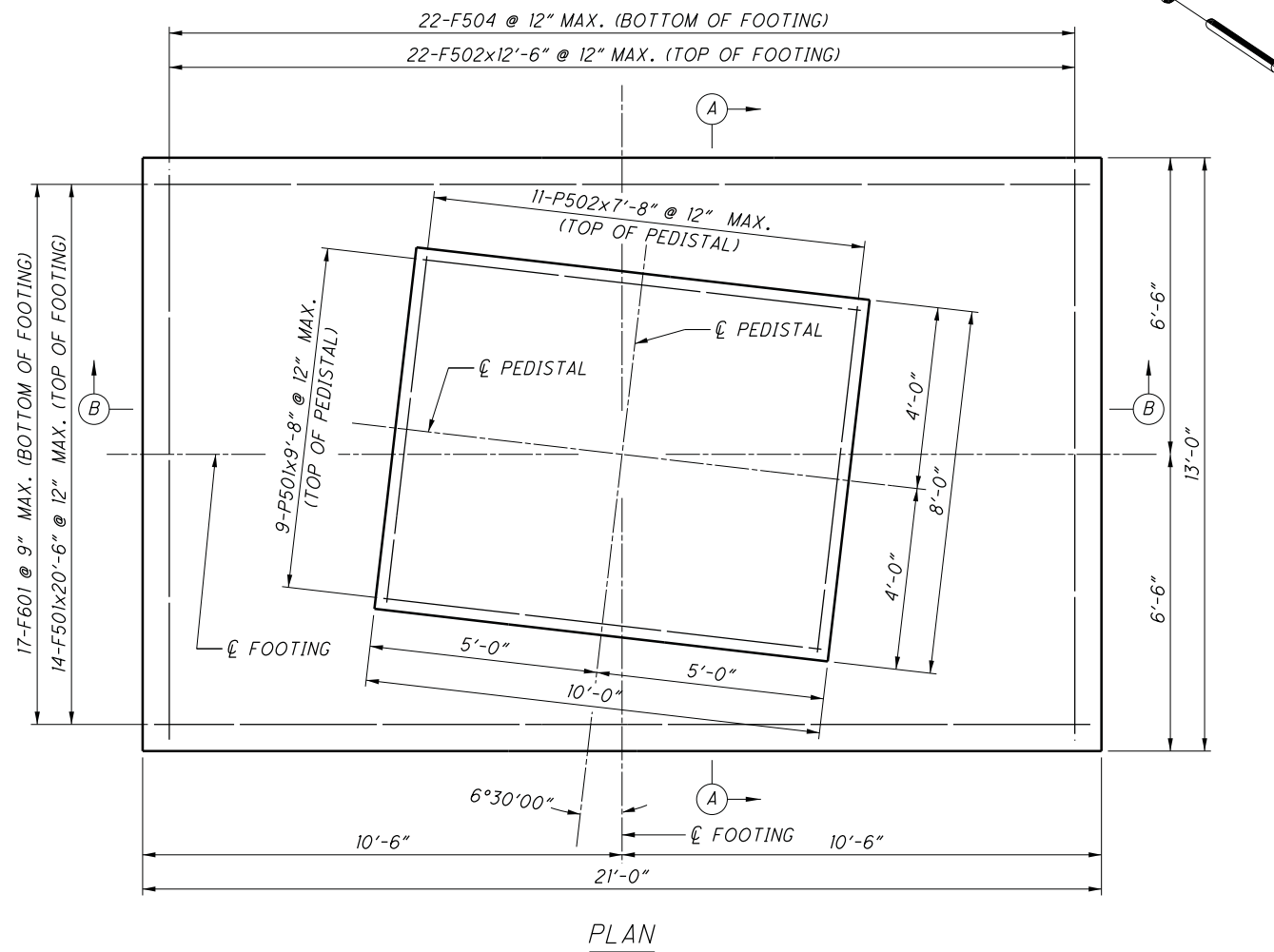


FOOTING FOR MASONRY COLUMNS AT PIER 11



NOTES:

1. CONCRETE SHALL BE CLASS OSCI - COMPRESSIVE STRENGTH 4.0 KSI
2. REINFORCNG STEEL SHALL BE ASTM A615 OR A996 GRADE 60, MINIMUM YEILD STRENGTH 60 KSI, EPOXY COATED, AND PER CMS 509.
3. THE MASONRY COLUMN FOOTINGS, AS DESIGNED, PRODUCE A MAXIMUM BEARING PRESSURE OF 2000 POUNDS PER SQUARE FOOT. THE ALLOWABLE BEARING PRESSURE IS 2000 POUNDS PER SQUARE FOOT.

