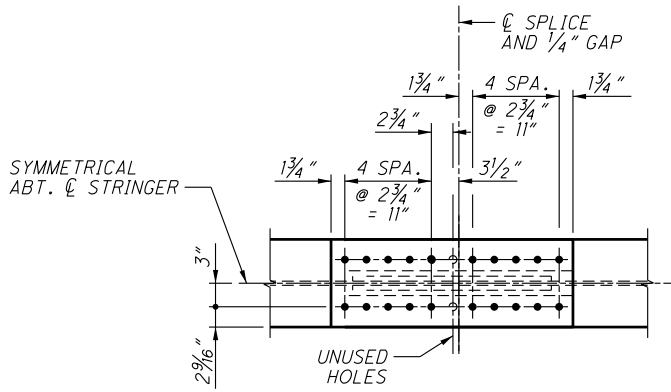
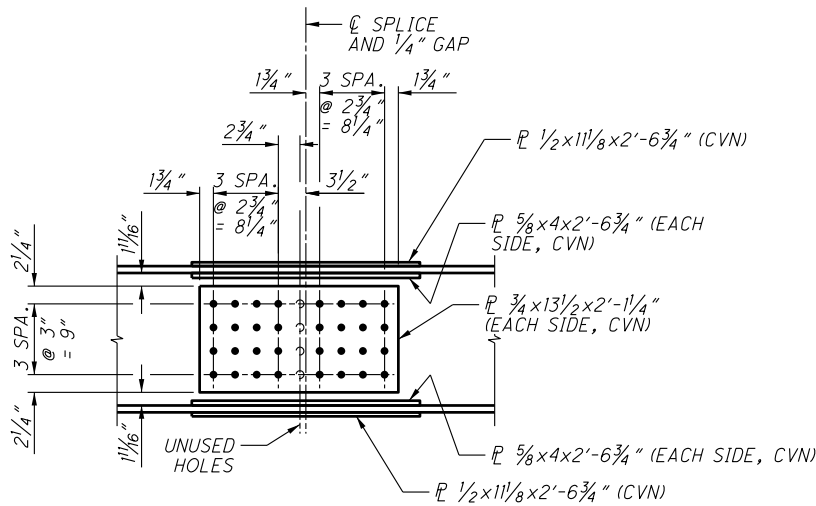


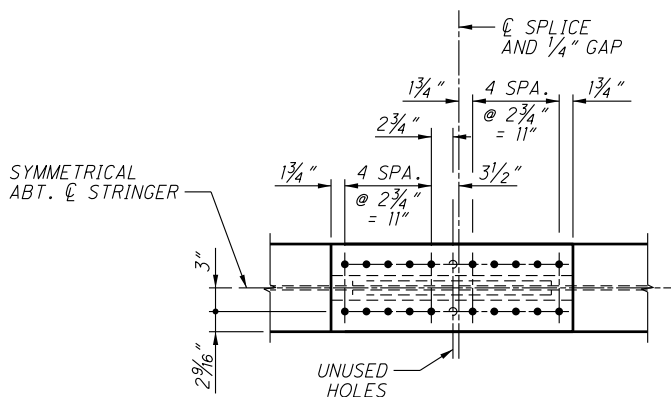
RFI 447



PLAN - TOP FLANGE



ELEVATION



PLAN - BOTTOM FLANGE

NOTES:

- ALL STEEL SHALL BE A709, GRADE 50 AND SHALL BE PAINTED WITH AN IZEU COATING SYSTEM.
- HIGH STRENGTH BOLTS FOR STRINGER FIELD SPLICES SHALL BE 1/8" φ A325, GALVANIZED TYPE I BOLTS.
- WHERE A SHAPE OR PLATE IS DESIGNATED (CVN), FURNISH MATERIAL THAT MEETS THE MINIMUM NOTCH TOUGHNESS REQUIREMENTS AS SPECIFIED IN 711.01.
- FIELD SPLICE CONNECTION WEB PLATES SHALL HAVE BOLT THREAD EXCLUDED FROM THE SHEAR PLANES.

STRINGER C FIELD SPLICE S35 DETAILS

(HIGH STEEL SK-051413-A)