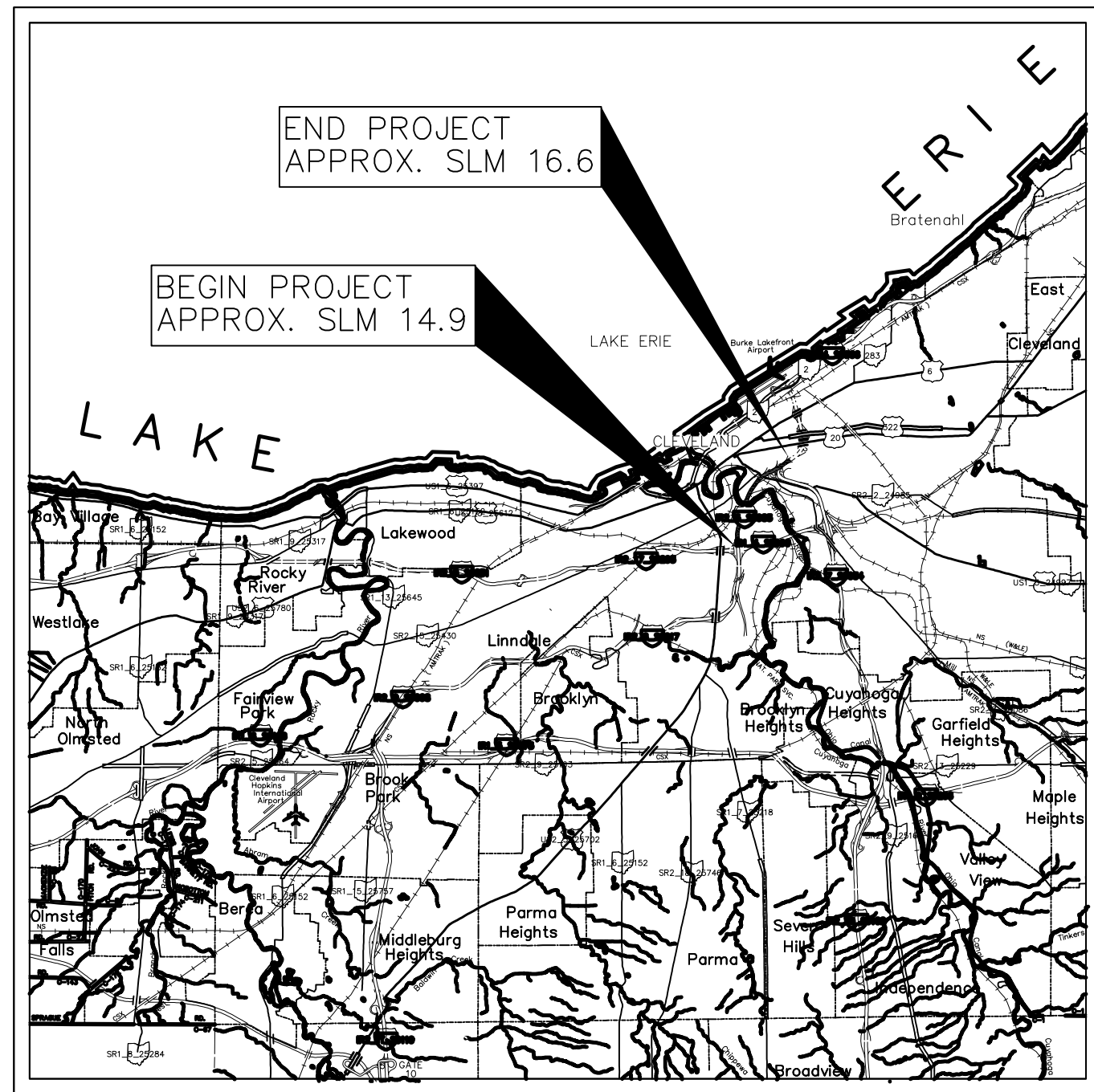
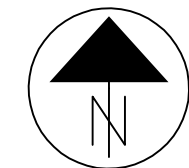


CHECKED BY: T.M.S. 2 FEB 11
 CORRECTED BY: T.M.S. 2 FEB 11
 BACKCHECKED BY: G.L.H. 2 FEB 11
 VERIFIED BY: G.L.H. 2 FEB 11
 CHECK PRINT (INITIAL & DATE)
 MADE BY: T.M.S. 2 FEB 11



LOCATION MAP
 LATITUDE: 41°29'12" LONGITUDE: 81°41'28"



PORTION TO BE IMPROVED _____
 INTERSTATE HIGHWAY _____
 STATE & FEDERAL ROUTES _____
 COUNTY & TOWNSHIP ROADS _____
 OTHER ROADS _____

DESIGN DESIGNATION

CURRENT ADT (2008) _____ 119,000
 DESIGN YEAR ADT (2035) _____
 DESIGN HOURLY VOLUME (20____) _____
 DIRECTIONAL DISTRIBUTION _____
 TRUCKS (24 HOUR B&C) _____
 DESIGN SPEED _____ 60 MPH
 LEGAL SPEED _____

DESIGN FUNCTIONAL CLASSIFICATION:
 URBAN INTERSTATE _____
 NHS PROJECT _____

DESIGN EXCEPTIONS

DESIGN EXCEPTION SHOULDER WIDTH
 ONTARIO RAMP HORIZONTAL ALIGNMENT
 ONTARIO RAMP VERTICAL ALIGNMENT
 E9TH RAMP HORIZONTAL ALIGNMENT

UNDERGROUND UTILITIES
 CONTACT BOTH SERVICES
 CALL TWO WORKING DAYS
 BEFORE YOU DIG

CALL
 1-800-362-2764
 (TOLL FREE)

OHIO UTILITIES PROTECTION SERVICE
 NON-MEMBERS
 MUST BE CALLED DIRECTLY

OIL & GAS PRODUCERS PROTECTIVE
 SERVICE CALL: 1-800-925-0988



STATE OF OHIO
 DEPARTMENT OF TRANSPORTATION
 CUY-90-14.90
 CITY OF CLEVELAND
 CUYAHOGA COUNTY
 ROADWAY
 WEST 3rd STREET,
 EAST 22nd STREET &
 CANAL RD DUCT BANK
 & POLE RELOCATION

WEST 3rd STREET
 THE CLEVELAND PUBLIC POWER UTILITY WORK CONSISTS OF INSTALLING A NEW UNDERGROUND UTILITY DUCT BANK BETWEEN STATIONS 33+0± AND 38+60± AS SHOWN ON DRAWING CPP 103. THE EXISTING OVERHEAD PRIMARY SERVICE WILL BE REMOVED AFTER INSTALLATION OF THE DUCT BANK.

EAST 22nd STREET
 THE CLEVELAND PUBLIC POWER UTILITY WORK CONSISTS OF REMOVING AND REINSTALLING THE CPP POLES AND OVERHEAD SERVICE ON WEST SIDE OF EAST 22nd STREET. THE WORK WILL BE PERFORMED DUE TO THE INSTALLATION OF AN ADDITIONAL TRAFFIC LANE ON EAST 22nd STREET.

CANAL ROAD
 THE CLEVELAND PUBLIC POWER UTILITY WORK CONSISTS OF REMOVING THE EXISTING OVERHEAD PRIMARY SERVICE TO FREE THE AREA OF CABLES DURING CONSTRUCTION. THE POLES WILL REMAIN IN PLACE. NEW CONDUCTORS WILL BE INSTALLED ON THE EXISTING POLES UPON COMPLETION OF THE CONSTRUCTION WORK IN THE AREA.

PROJECT DESCRIPTION

CONSTRUCTION OF A NEW BRIDGE OVER THE CUYAHOGA RIVER VALLEY ON I-90 THAT WILL ACCOMODATE 6 LANES OF BI-DIRECTIONAL TRAFFIC AND 5 LANES OF TRAFFIC WESTBOUND THROUGH TRAFFIC FOLLOWING FUTURE INNERBELT CONSTRUCTION CONTRACTS. THIS PROJECT ALSO INCLUDES RECONFIGURATION OF 4 PARTIAL INTERCHANGES, THE CONSTRUCTION OF 3 NEW BRIDGES AND 2 NEW LOCAL ROADWAYS, THE RECONSTRUCTION AND REALIGNMENTS OF 3 LOCAL ROADWAYS, THE REHABILITATION AND RECONSTRUCTION OF 11 BRIDGES, AND RESURFACING OF MANY LOCAL STREETS CONNECTED TO THE PROJECT.

THIS PACKAGE INCLUDES THE SIDE STREETS EAST OF THE RIVER. THIS INCLUDES IMPROVEMENTS TO COMMERCIAL, BROADWAY, AND PORTIONS OF E. 9TH AND E. 14TH.

PROJECT EARTH DISTURBED AREA:
 ESTIMATED CONTRACTOR EARTH DISTURBED AREA:
 NOTICE OF INTENT EARTH DISTURBED AREA:

LIMITED ACCESS

THIS IMPROVEMENT IS ESPECIALLY DESIGNED FOR THROUGH TRAFFIC AND HAS BEEN DECLARED A LIMITED ACCESS HIGHWAY OR FREEWAY BY ACTION OF THE DIRECTOR IN ACCORDANCE WITH THE PROVISIONS OF SECTION 5511.02 OF THE OHIO REVISED CODE.

2010 SPECIFICATIONS

THE STANDARD SPECIFICATIONS OF THE STATE OF OHIO, DEPARTMENT OF TRANSPORTATION, INCLUDING CHANGES AND SUPPLEMENTAL SPECIFICATIONS AS LISTED IN THE WALSH CONTRACT SHALL GOVERN THIS IMPROVEMENT.

UNDER AUTHORITY OF SECTION 4511.21, DIVISION (H) OF THE OHIO REVISED CODE, THE REVISED PRIMA FACIE SPEED LIMITS AS INDICATED HEREIN ARE DETERMINED TO BE REASONABLE AND SAFE, AND ARE HEREBY ESTABLISHED FOR THE DURATION OF THIS PROJECT. THE PRIMA FACIE SPEED LIMIT OR LIMITS HEREBY ESTABLISHED SHALL BECOME EFFECTIVE WHEN APPROPRIATE SIGNS GIVING NOTICE THEREOF ARE ERECTED.

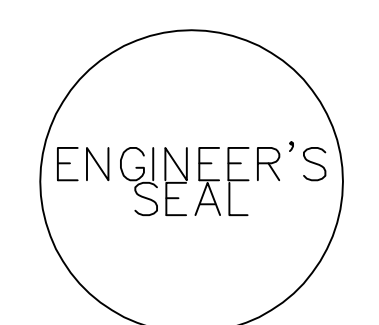
CPP CONTACT

MR. RAY O'NEILL
 CLEVELAND PUBLIC POWER
 1300 LAKESIDE AVENUE
 CLEVELAND, OHIO 44114
 (216) 664-3922 EXT. 193

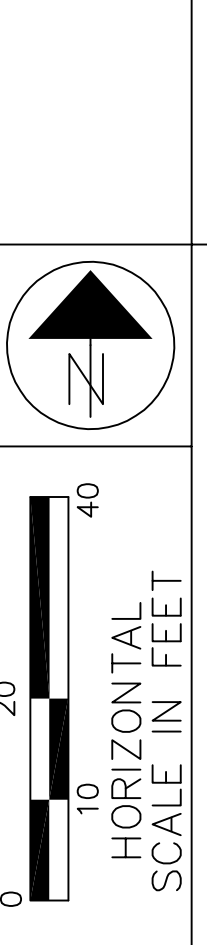
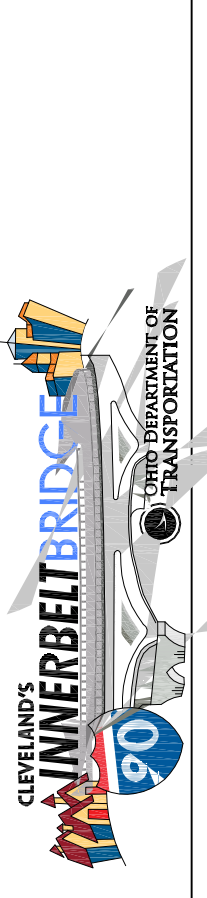
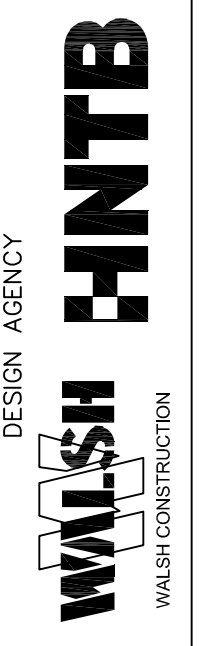
MR. GREGORY HORODYSKI
 CLEVELAND PUBLIC POWER
 1300 LAKESIDE AVENUE
 CLEVELAND, OHIO 44114
 (216) 664-3922 EXT. 164

APPROVED _____
 DATE _____ DISTRICT DEPUTY DIRECTOR

APPROVED _____
 DATE _____ DIRECTOR, DEPARTMENT OF TRANSPORTATION



NO.	REVISIONS	DATE



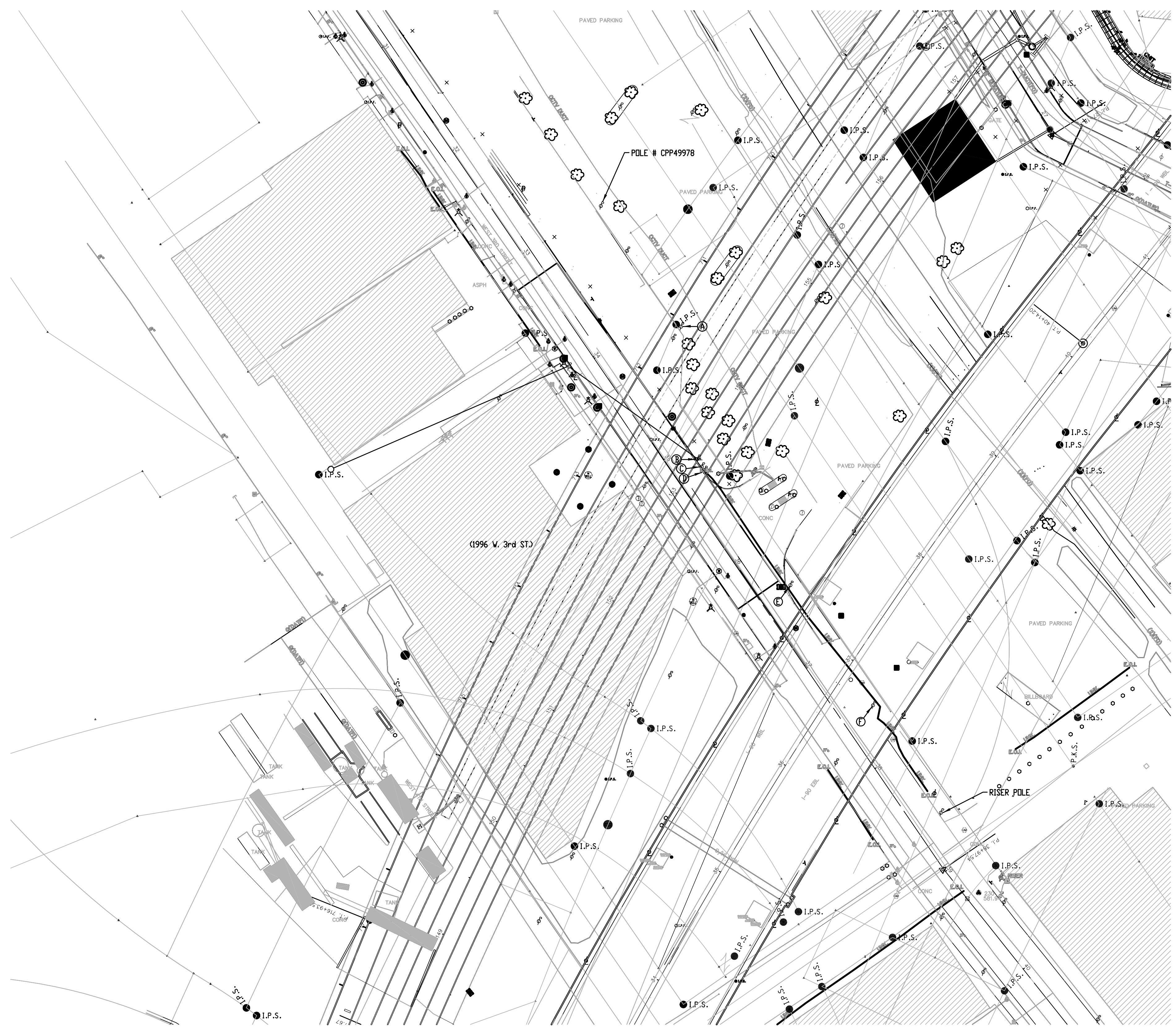
DESIGNED G.L.H.
 CHECKED T.M.
 CPP 101

PRELIMINARY NOT FOR CONSTRUCTION

ROADWAY WEST 3rd STREET, EAST 22nd STREET & CANAL ROAD DUCT BANK & POLE RELOCATION

CUY-90-14.90

CHECK PRINT (INITIAL & DATE)
 MADE BY: T.M.S. 2 FEB 11
 CHECKED BY: T.M. 3 FEB 11
 BACKCHECKED BY: G.L.H. 2 FEB 11
 CORRECTED BY: T.M.S. 2 FEB 11
 VERIFIED BY: G.L.H. 2 FEB 11

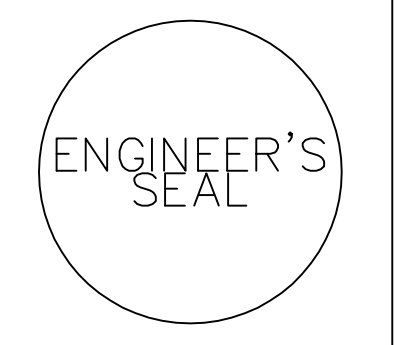


WEST 3rd STREET PLAN
 SCALE: 1"=50'

POLES TO REMOVE

TAB #	POLE #
A	CPP49979
B	CPP49983
C	CPP49985
D	MELP50024
E	MELP50023
F	MELP50022

- NOTES:**
- POLES 'A' THROUGH 'F' AND OVERHEAD PRIMARY SERVICE ATTACHED TO THESE POLES TO BE REMOVED. OVERHEAD PRIMARY SERVICE TO ALSO BE REMOVED BETWEEN POLE # CPP 49978 AND POLE 'A', AND ALSO BETWEEN POLE 'F' AND POLE DESIGNATED AS RISER POLE.
 - COORDINATE WITH TELEPHONE COMPANY FOR REMOVAL OF TELEPHONE CABLES FROM THESE POLES, REMOVAL OF TELEPHONE SERVICE TO BE PERFORMED BY TELEPHONE COMPANY.
 - REMOVE OVERHEAD PRIMARY SERVICE FROM POLES 'C' AND 'B' TO POLES ADJACENT TO 1996 WEST 3RD STREET COORDINATE REMOVAL WITH INSTALLATION OF NEW OVERHEAD SERVICE.



NO.	REVISIONS	DATE

DESIGN AGENCY
WALSH HNTB
 WALSH CONSTRUCTION

CLEVELAND'S
INNERBELT BRIDGE
 90
 TRANSPORTATION

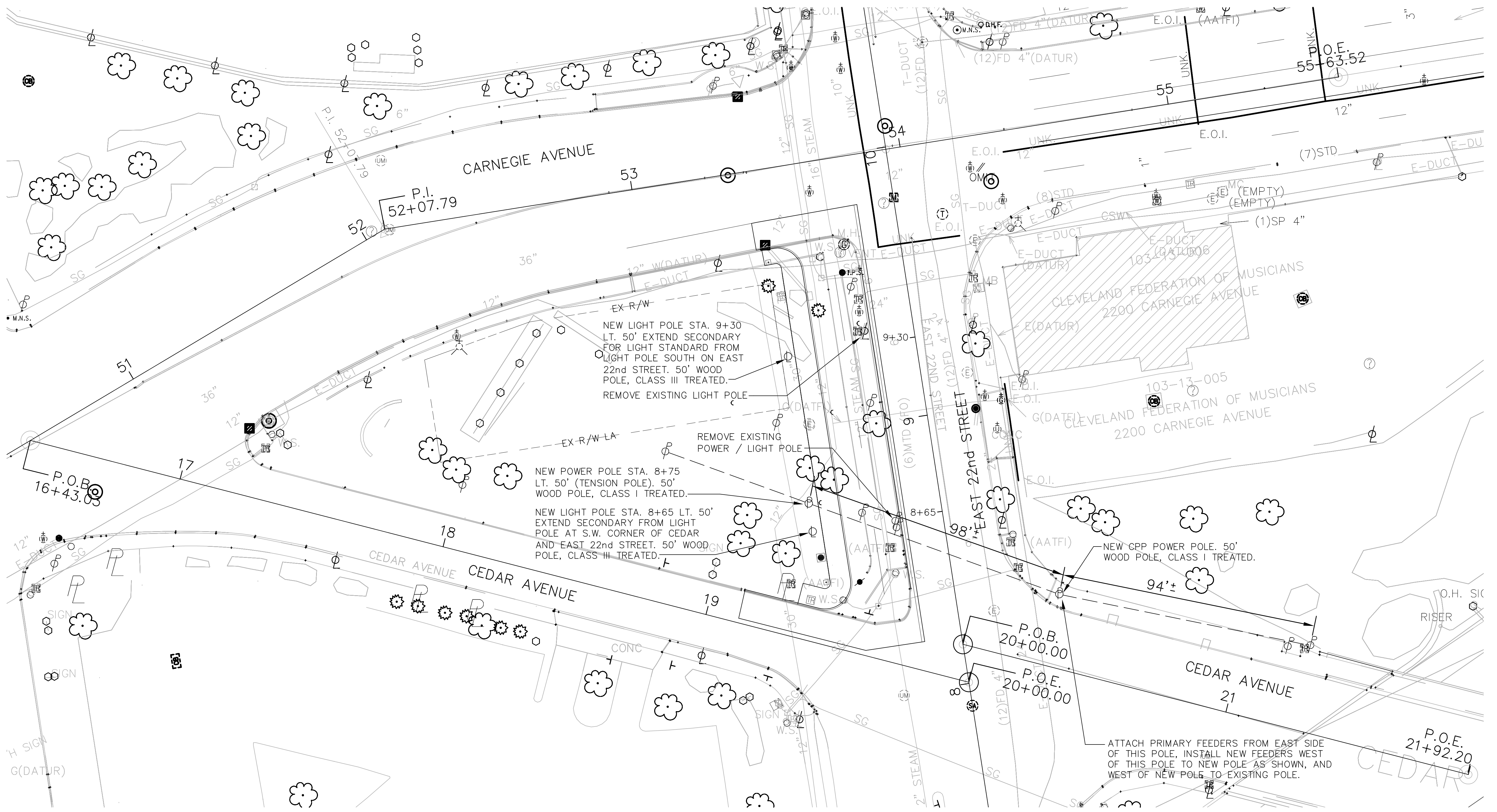
WEST THIRD STREET OVERHEAD LINES AND POLE REMOVAL

0 50 100
 HORIZONTAL SCALE IN FEET

CUY-90-14.90

DESIGNED G.L.H.
 CHECKED T.M.
 PRELIMINARY NOT FOR CONSTRUCTION
 CPP 102

CHECKED BY: T.M.S. 2 FEB 11
 CORRECTED BY: T.M.S. 2 FEB 11
 MADE BY: T.M.S. 2 FEB 11
 BACKCHECKED BY: G.L.H. 2 FEB 11
 VERIFIED BY: G.L.H. 2 FEB 11



EAST 22nd STREET POLE RELOCATION
 SCALE: 1"=20'

- NOTES:
1. INSTALL NEW PRIMARY POWER POLE ON NORTH SIDE CORNER OF EAST 22 STREET AND CEDAR AVENUE.
 2. REMOVE EXISTING CPP POWER POLE ON EAST 22 STREET ON WEST SIDE, POLE FARTEST SOUTH OF CARNEGIE AVENUE.
 3. NEW POWER AND LIGHT POLES WILL BE SOUTHERN YELLOW PINE CCA TREATED.

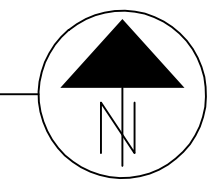
PRELIMINARY NOT FOR CONSTRUCTION

		DATE	
		REVISIONS	
NO.			
DESIGN AGENCY			
	EAST 22nd STREET POLE RELOCATION		
		CUY-90-14.90	
DESIGNED G.L.H.	CHECKED T.M.	CPP 104	

CHECK PRINT (INITIAL & DATE) CHECKED BY: T.M. 3 FEB 11 CORRECTED BY: T.M.S. 2 FEB 11
 MADE BY: T.M.S. 2 FEB 11 BACKCHECKED BY: G.L.H. 2 FEB 11 VERIFIED BY: G.L.H. 2 FEB 11



CANAL ROAD POLE RELOCATION
 SCALE: 1"=20'



PRELIMINARY NOT FOR CONSTRUCTION

DESIGNED G.L.H.	CHECKED T.M.	CP 105	CUY-90-14.90		 HORIZONTAL SCALE IN FEET 0 10 20 40	 CLEVELAND'S INNERBELT BRIDGE 90 CLEVELAND METRO TRANSIT AUTHORITY	 WALSH HNTB WALSH CONSTRUCTION	DESIGN AGENCY WALSH HNTB WALSH CONSTRUCTION	NO.	REVISIONS	DATE	 ENGINEER'S SEAL