



"Paul Fatica "
<faticap@ksassociates.com>

04/08/2011 09:29 AM

To <eric.s.johnston@att.com>

cc <mhedrick@walshgroup.com>, <kfertal@hntb.com>, <curtice.malone@dot.state.oh.us>, <thomas.hyland@dot.state.oh.us>

bcc

Subject Cleveland Innerbelt Bridge - Utilities - AT&T

Eric,

An additional conflict location has been identified. It is at Pier 12 along Commercial/Central Viaduct. This conduit will need to be relocated away from the piers. Call me if you have any questions.

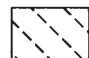

Paul

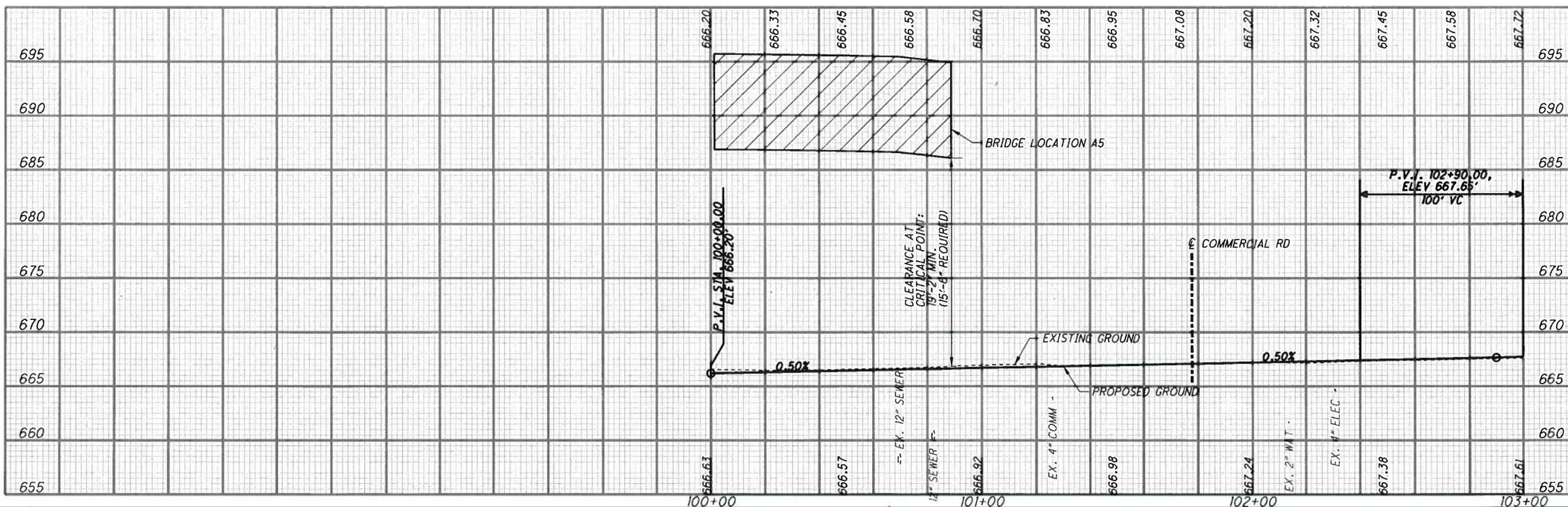
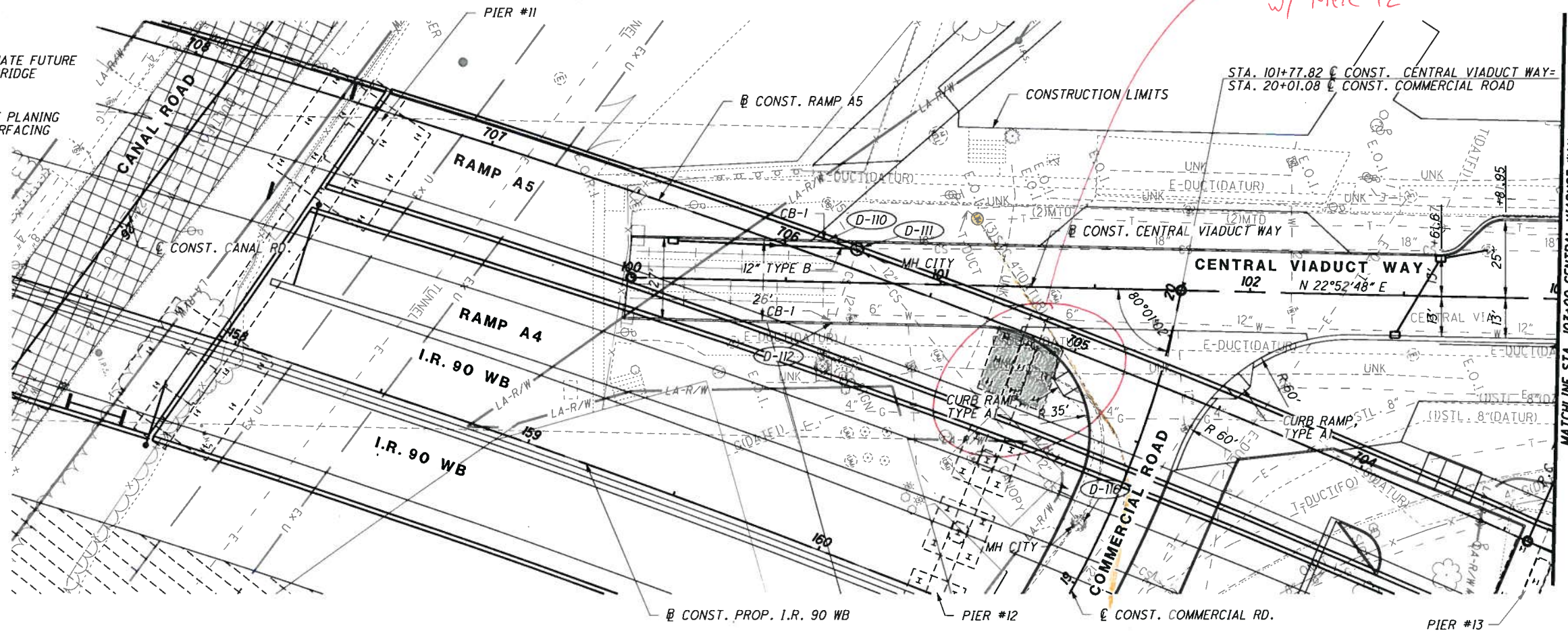


Central Viaduct - Pier 12 conflict.pdf

NOTE: SEE DWG. NOS. SP-001 TO SP-016 FOR ALIGNMENT INFORMATION.
 SEE DWG. NO. ID-003 FOR INTERSECTION DETAILS.
 SEE DWG. NOS. LS-005 TO LS-006 FOR LANDSCAPING AND SIDEWALK
 DETAILS.

LEGEND

-  APPROXIMATE FUTURE I-90 EB BRIDGE
-  PAVEMENT PLANING AND RESURFACING



3/30/2011 10:24:00 AM
 Model: Sheet1
 File: 49633-S-RD-PLN11.dgn

CHECK PRINT (INITIAL & DATE) MADE BY:
 CORRECTED BY:
 VERIFIED BY:
 CHECKED BY:
 BACKCHECKED BY:



NO.	REVISIONS	DATE
A	INTERIM SUBMITTAL	12/09/2010
B	FINAL SUBMITTAL	03/30/2011

DESIGN AGENCY
WALSH HNTB
 WALSH CONSTRUCTION



ROADWAY
 GATEWAY



HORIZONTAL SCALE IN FEET
 1" = 40'

DWG. NO.
 PP-025

DESIGNED: EJK
 CHECKED: JRG

STREET PLAN AND PROFILE
 CENTRAL VIADUCT WAY
 STA. 100+00 TO STA. 103+00

CUY-90-14.90