

THE C.E.I. CO.	REQUESTED 6/15/11	FAC. MAPPING REFERENCE #	GRID # 4722
FILE 50724978	DATE 4/15/11	SHEET 4 OF 8	
SURVEY FOR	INNERBELT BRIDGE PROJECT - CANAL RD. PROJECT		
ADDRESS	CANAL RD. -- W. EAGLE AVE. TO COMMERCIAL RD.		
MUNICIPALITY	CITY OF CLEVELAND	SCALE	NONE
ORDER FOR	OHIO DEPARTMENT OF TRANSPORTATION Phase 2		
PREPARED BY	SURVEY OFFICE	DRAWN BY	CHATFIELD
		PHONE	440.717.6846
CIRCUIT RELOCATION WORK -- OH TO UG			
CONST. PLANS APPROVED	JOINT PROPOSAL		
MARKETING	SAPD#	13002553	J.D.
CONSUMER'S CHARGE			

DATE	REC.	FDR-EST	DM	SUB-WAY	CABLE	SERV	RDD	DMC3	WES3	DEB1	RJS1	TOTAL
4/15/11	2		1		2		1	1	1	1	1	10

RETURN TO RIGHT-OF-WAY BEFORE SCHEDULING	JOINT POLE RELEASE	GANG MEET	TREE WORK	MUNICIPAL PERMIT	INF'D
		<input type="checkbox"/>	<input type="checkbox"/>	<input type="checkbox"/>	<input type="checkbox"/>
DATE CLEARED					

DATE	DESCRIPTION	APPROVED BY

A CHECK MARK NEXT TO EACH ITEM ON THE SKETCH, INCLUDING CHANGES, INDICATES THAT THE WORK HAS BEEN COMPLETED	ITEMS	UNITS OF WORK COMPLETED		
		INSTALLED	REMOVED	SHIFTED
<input type="checkbox"/>	POLES			
<input type="checkbox"/>	WIRES			
<input type="checkbox"/>	ANCHORS			

KIND OF POLES INSTALLED BY SYMBOL	
POLES LEFT FOR TEL. TO REMOVE	
DATE WORK COMPLETED	SUPERVISOR'S SIGNATURE

UNDERGROUND FACILITIES	WARNING	SPECIAL INSTRUCTIONS
HIGH PRESSURE PIPELINE	AT SYMBOL	CHECKED BY
CEI		
TELEPHONE		

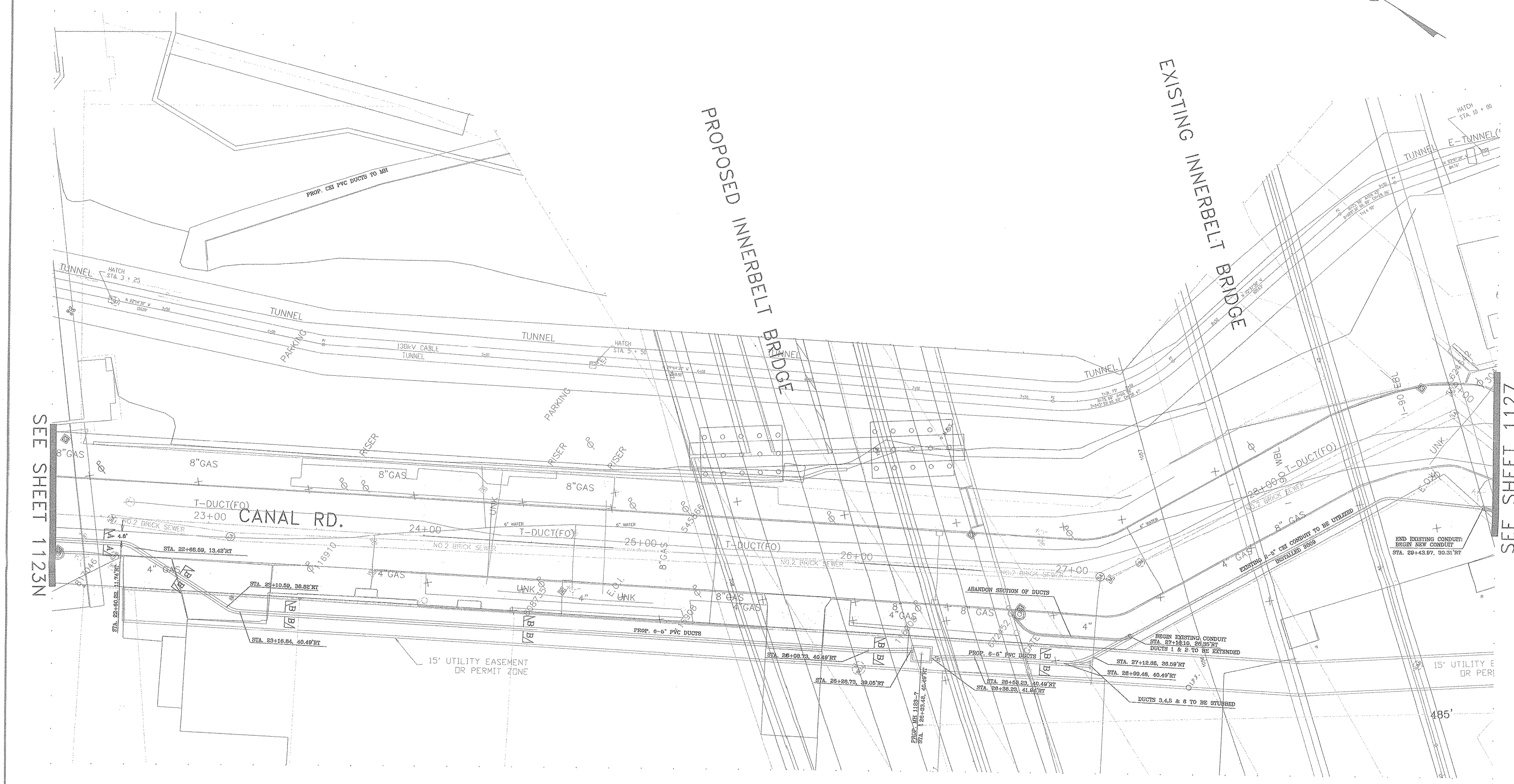
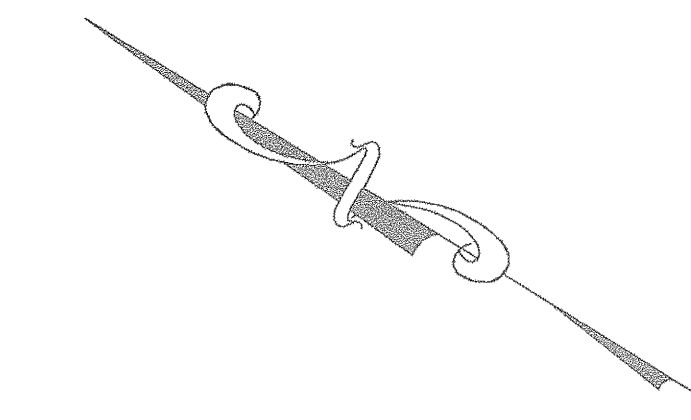
D.H. TRANSMISSION CLEARANCE	WARNING
FT. MIN. CLEARANCE REQUIRED AT	DEGREES F.
AT SYMBOLS	
ENGINEERING CHECKED BY:	DATE
CONSTRUCTION CHECKED BY:	DATE

CONFIDENTIAL
FIRSTENERGY CORP.

INFORMATION IN THIS DOCUMENT IS PROPRIETARY AND SHALL NOT BE USED, COPIED, REPRODUCED OR DISCLOSED IN WHOLE OR IN PART WITHOUT THE WRITTEN CONSENT OF FIRSTENERGY CORP.

WBS: CE-000246-DU
CIRCUITS : H-5-CN-P
H-98-CN-P
SEE WR# 54297014

GRID 4722
ID-030T

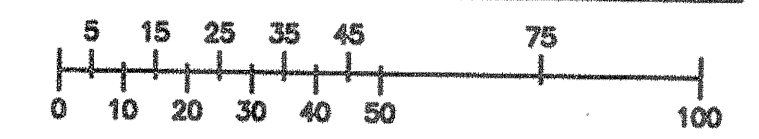


CORRECTIONS	DATE	BY
REVISION	4-15-11	SMG
REVISION		
REVISION		
REVISION		
REVISION		
REVISION		
REVISION		
REVISION		
REVISION		

NOTE --- SUBWAY DISTANCES ARE GIVEN TO CENTER OF MANHOLES
VENTS, CURBS & SERVICES ARE GIVEN TO CENTER OF COVERS

THE CLEVELAND
ELECTRIC ILLUMINATING CO.
CANAL RD.
DRAWN 4-15-11

SMG SHEET 1123S



1123S