

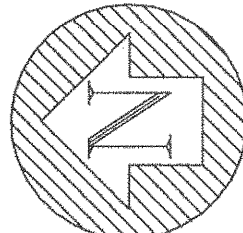
THE C.E.I. CO.	REQUESTED ISS 4/15/11	FAC. MAPPING REFERENCE #	GRID # 4722	2 WORKING DAYS								
FILE 52312776	DATE 01/31/11	SHEET 2 OF 2	BEFORE YOU DIG "IT'S THE LAW" CALL TOLL FREE 800-362-2764 OHIO UTILITIES PROTECTION SERVICE									
SURVEY FOR INNERBELT BR PROJ - OH RELO TO STONES LEVEE	ADDRESS STONES LEVEE - CANAL RD TO WEST 3RD STREET											
MUNICIPALITY CITY OF CLEVELAND	SCALE NONE	ORDER FOR OHIO DEPARTMENT OF TRANSPORTATION										
PREPARED BY SURVEY OFFICE	DRAWN BY CHATFIELD	PHONE 440.717.6846	CIRCUIT RELOCATION WORK - OH TO UG (KNOWN AS ODOT PHASE 1A)									
CONSTR. PLANS APPROVED	JOINT PROPOSAL	MARKETING										
CONSUMER'S CHARGE												
DATE	REC.	FDR-EST	D.H.	SUB-WAY	CABLE	SERV	RDD	DMCS	WES3	DEBI	RJS1	TOTAL
3/11	2		1		2		1	1	1	1	1	10
RETURN TO RIGHT-OF-WAY BEFORE SCHEDULING					JOINT POLE RELEASE		GANG MEET		TREE WORK		MUNICIPAL PERMIT INFO	
DATE CLEARED												
REVISION HISTORY	DATE	DESCRIPTION										APPROVED BY
	1/31/11	CABLE INSTALL RELEASE										
CONSTRUCTION	A CHECK MARK NEXT TO EACH ITEM ON THE SKETCH, INCLUDING CHANGES, INDICATES THAT THE WORK HAS BEEN COMPLETED											
	ITEMS	UNITS OF WORK COMPLETED										
	POLES	INSTALLED	REMOVED	SHIFTED								
	WIRE											
	ANCHORS											
	KIND OF POLE(S) INSTALLED BY SYMBOL											
	POLES LEFT FOR TEL. TO REMOVE											
	DATE WORK COMPLETED											
	SUPERVISORS SIGNATURE											
CAUTION	UNDERGROUND FACILITIES WARNING											
	HIGH PRESSURE PIPELINE	AT SYMBOL	CHECKED BY	SPECIAL INSTRUCTIONS								
D.H. TRANSMISSION CLEARANCE WARNING												
_____ FT. MIN. CLEARANCE REQUIRED AT _____ DEGREES F.												
ENGINEERING CHECKED BY: _____												DATE
CONSTRUCTION CHECKED BY: _____												DATE

WBS: CE-000246-DU

CIRCUITS: H-5-CN-P
H-98-CN-P

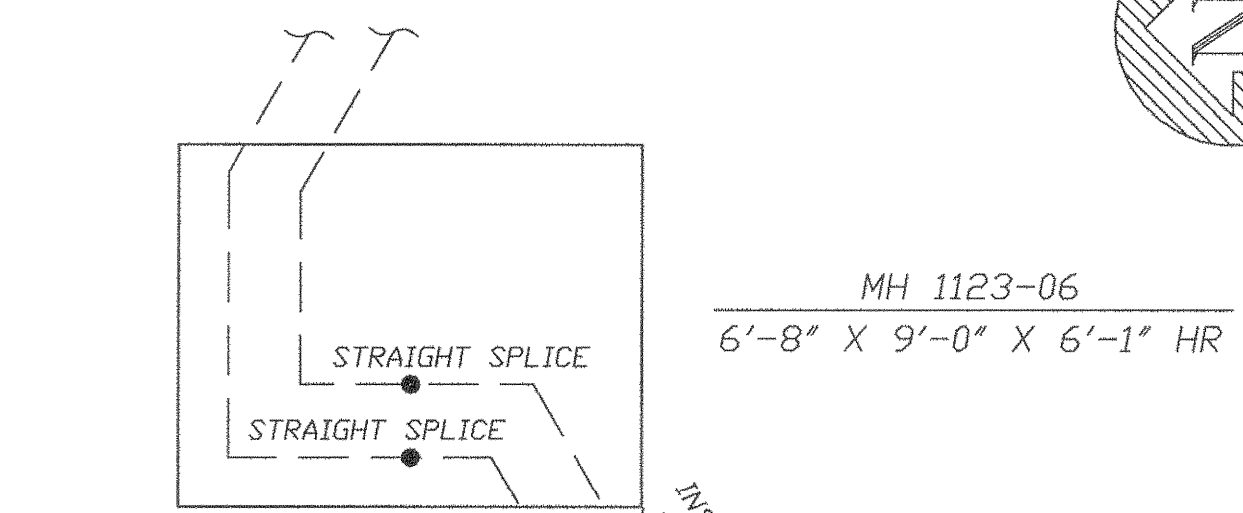
SEE WR-53706522 FOR RELATED OVERHEAD WORK

H-5-CN-P & H-98-CN-P TO MH-1123-04
SEE SHEET 1 OF 2



CABLE INSTALL SUMMARY SHEET 2

CABLE WORK ON SHEET 2



FROM MH 1123-06 TO MH 1123-08
INSTALL CABLE-15KV 500KCMIL-1C-CU-EPR-FSN TRIPLEXED (3-1C), 67 TCF TOTAL
INSTALL CABLE-15KV 500KCMIL-1C-CU-EPR-FSN TRIPLEXED (3-1C), 67 TCF TOTAL

IN MH 1123-06
INSTALL 6-500KCMIL-1C-15KV STRAIGHT SPLICES

FROM MH 1123-08 TO MH 1126-05
INSTALL CABLE-15KV 500KCMIL-1C-CU-EPR-FSN TRIPLEXED (3-1C), 272 TCF TOTAL
INSTALL CABLE-15KV 500KCMIL-1C-CU-EPR-FSN TRIPLEXED (3-1C), 272 TCF TOTAL

IN MH 1123-08
INSTALL 6-500KCMIL-1C-15KV STRAIGHT SPLICES

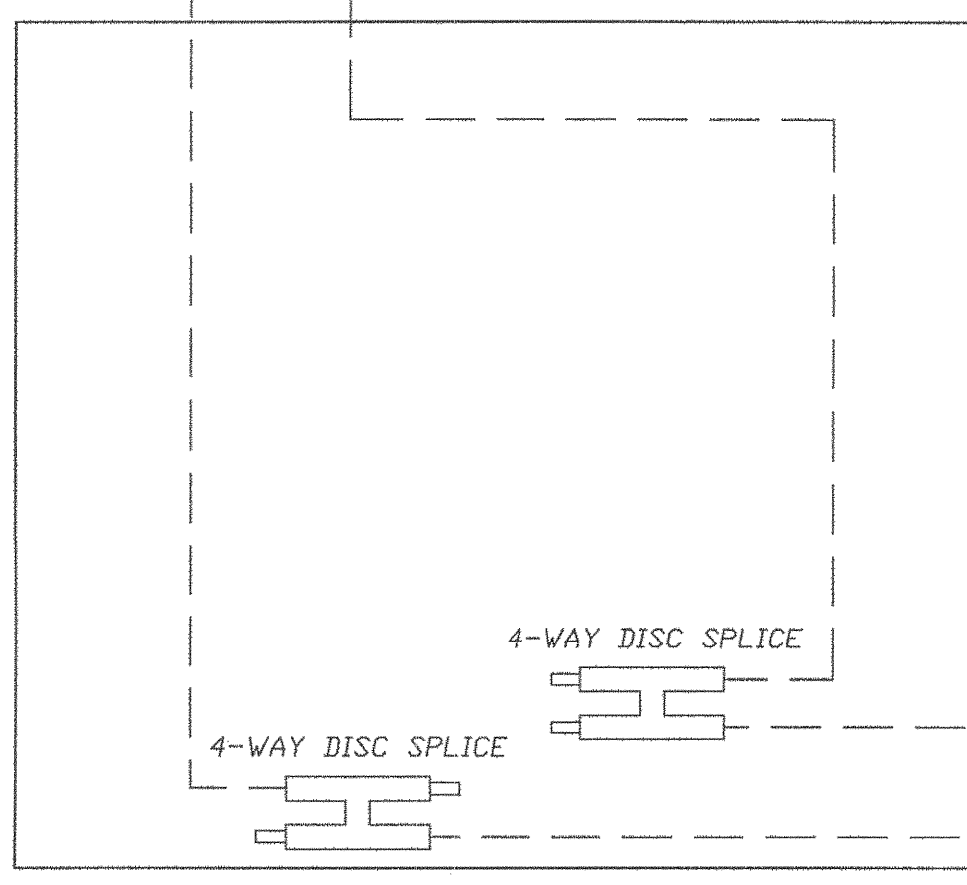
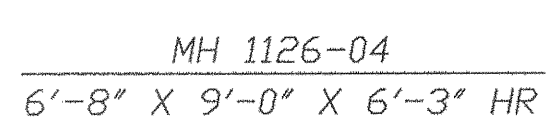
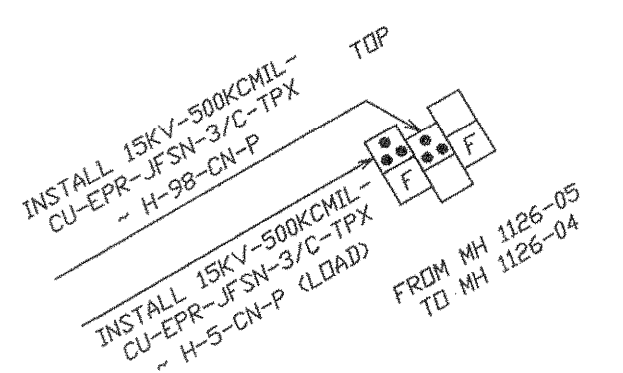
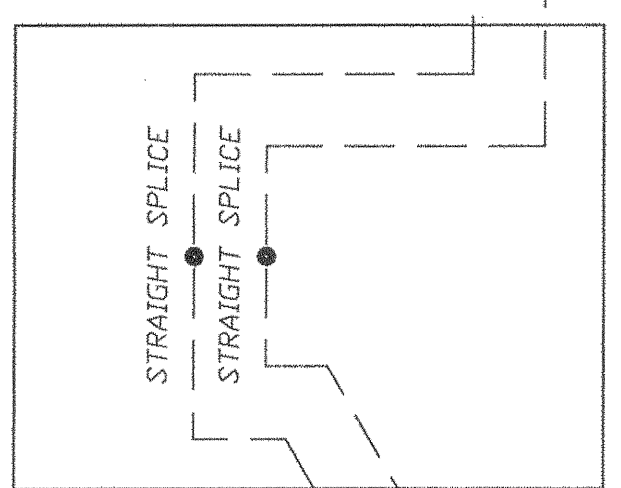
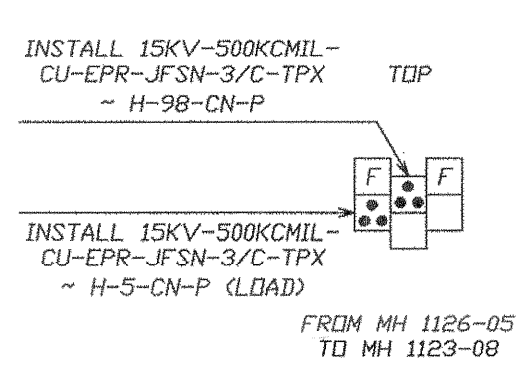
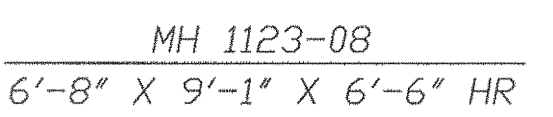
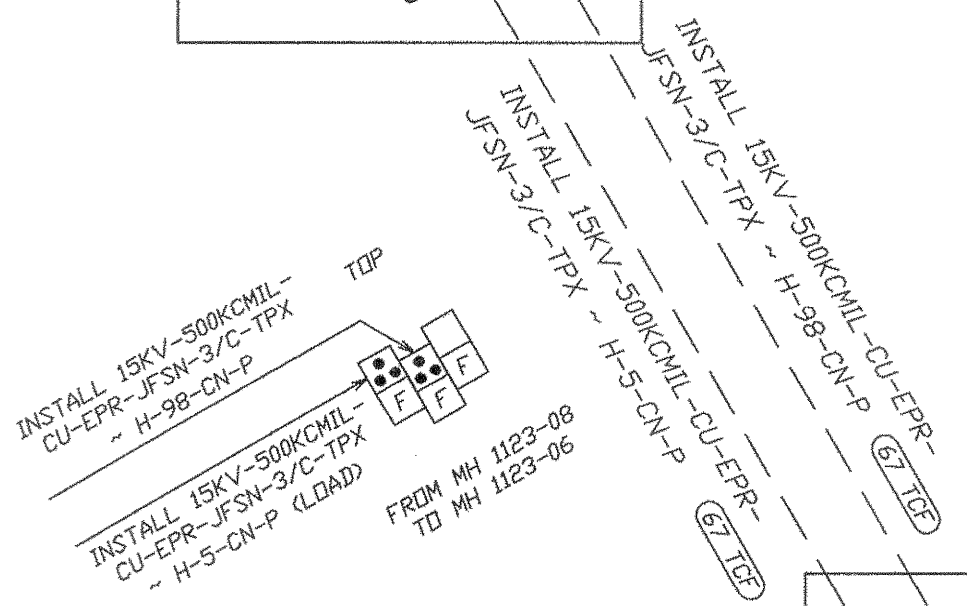
FROM MH 1126-05 TO MH 1126-04
INSTALL CABLE-15KV 500KCMIL-1C-CU-EPR-FSN TRIPLEXED (3-1C), 56 TCF TOTAL
INSTALL CABLE-15KV 500KCMIL-1C-CU-EPR-FSN TRIPLEXED (3-1C), 56 TCF TOTAL

IN MH 1126-05
INSTALL 6-500KCMIL-1C-15KV STRAIGHT SPLICES

IN MH 1126-04
INSTALL CABLE-15KV 500KCMIL-1C-CU-EPR-FSN TRIPLEXED (3-1C), 20 TCF TOTAL
INSTALL CABLE-15KV 500KCMIL-1C-CU-EPR-FSN TRIPLEXED (3-1C), 20 TCF TOTAL

IN MH 1126-04
INSTALL 6- 4-WAY INSULATED BUS BAR 15KV DISCONNECTABLE JOINT SPLICES
3 WITH 2-500KCMIL-CU ADAPTERS & 2-INSULATING CAPS (H-98-CN-P)
3 WITH 2-500KCMIL-CU ADAPTERS & 2-INSULATING CAPS (H-5-CN-P)

FROM MH 1126-04 TO PROPOSED CABLE POLE P#730541
INSTALL CABLE-15KV 500KCMIL-1C-CU-EPR-FSN TRIPLEXED (3-1C), 245 TCF TOTAL
INSTALL CABLE-15KV 500KCMIL-1C-CU-EPR-FSN TRIPLEXED (3-1C), 245 TCF TOTAL



INSTALL 15KV-500KCMIL-CU-EPR-FSN-3/C-TPX ~ H-98-CN-P (245 TCF)
INSTALL 15KV-500KCMIL-CU-EPR-FSN-3/C-TPX ~ H-5-CN-P (245 TCF)

WEST 3RD STREET

INSTALL 15KV-500KCMIL-CU-EPR-FSN-3/C-TPX ~ H-98-CN-P (245 TCF)
INSTALL 15KV-500KCMIL-CU-EPR-FSN-3/C-TPX ~ H-5-CN-P (245 TCF)
FROM MH 1126-04 TO P# 730541
FROM MH 1126-04 TO P# 730541

CONFIDENTIAL
FIRSTENERGY CORP.

INFORMATION IN THIS DOCUMENT IS PROPRIETARY AND SHALL NOT BE USED, COPIED, REPRODUCED OR DISCLOSED IN WHOLE OR IN PART WITHOUT THE WRITTEN CONSENT OF FIRSTENERGY CORP.