

REVISIONS LEADING TO STAKES

THE C.E.I. CO. REQUESTED 12/16/11 FILE NO. 54858442 DATE 9-12-2011 SHEET 1 OF 3 GRID # 4822-NW

2 WORKING DAYS BEFORE YOU DIG "IT'S THE LAW" CALL TOLL FREE 800-362-2764 OHIO UTILITIES PROTECTION SERVICE

SURVEY FOR ODOT-INDEPENDENT BRIDGE PROJECT

ADDRESS WEST 15TH ST & AUSTIN RD CLEVELAND OH 44115

ORDER FOR REMOVAL & RELOCATION OF OH FACILITIES

PREPARED BY D. SIEKA

PID # 77332

WRS: CE-000224

CONST. PLANS APPROVED 9-16-11

MARKETING J.O.

CONSUMER'S OFFICE

DATE	J.P.	FOR EST	D.H.	BY	CHARGE	SERV	MKT	REC.	ENGR	TOTAL
2									1	1

RETURN TO RIGHT-OF-WAY BEFORE SCHEDULING

DATE CLEARED

REVISION HISTORY

DATE	DESCRIPTION	APPROVED BY
------	-------------	-------------

CONSTRUCTION

ITEMS	UNITS OF WORK COMPLETED	
INSTALLED	REMOVED	SHIFTED

UNDERGROUND FACILITIES WARNING

D. H. TRANSMISSION CLEARANCE WARNING

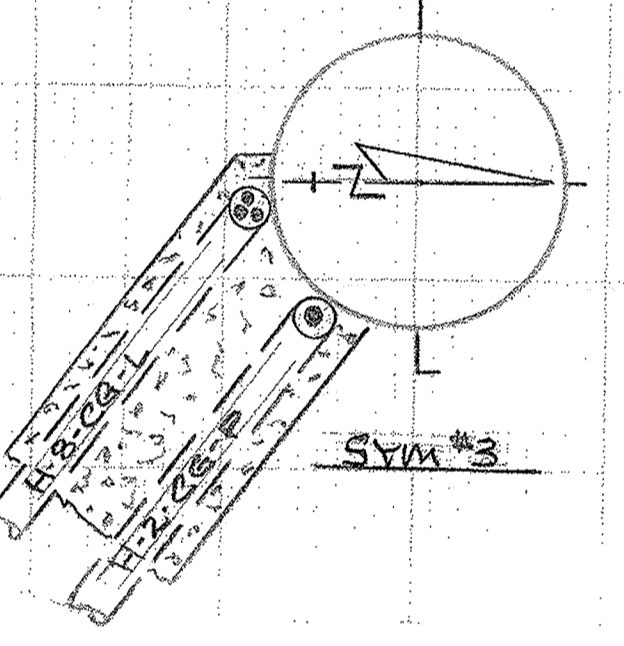
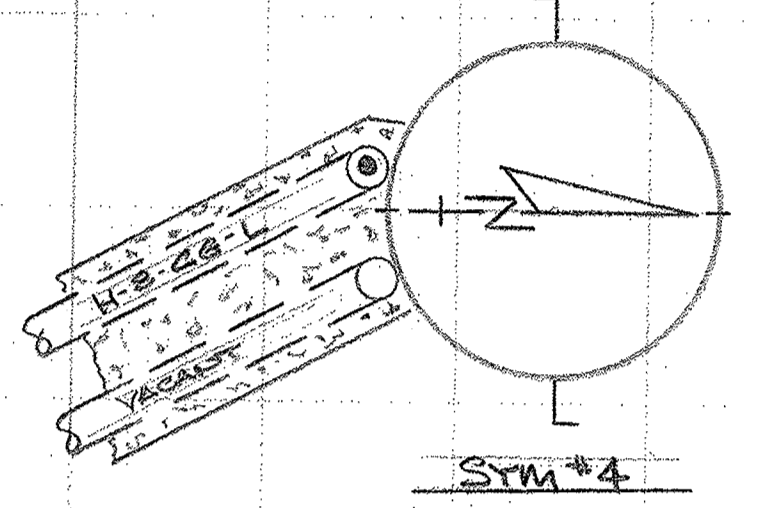
CONSTRUCTION CHECKED BY:

**WIRE NOTES**

- ① TO ② SHT #2 REM 3-336.4 KCM WP AL PEI (H-2-CG-P)-575'
- ① TO ② SHT #2 REM 3-336.4 KCM WP AL PEI (H-8-CG-L)-575'
- ① TO ② SHT #2 REM 3-336.4 KCM WP AL PEI (H-8-CG-L)-575'
- ① TO ② SHT #2 REM 3-336.4 KCM WP AL PEI (H-8-CG-L)-575'
- ⑤ TO ⑥ REM #4 DUP SEC-77'
- ⑤ TO ⑥ REM #4 DUP SEC-64'
- ⑥ TO ⑦ REM #1/0 TRI SEC-85'
- ⑦ TO ⑧ REM #4/0 QUAD SEC-145'
- ⑧ TO ① SHT #2 REM 3-336.4 KCM WP AL PEI (H-8-CG-L)-575'
- ⑧ TO ② SHT #2 REM 3-336.4 KCM WP AL PEI (H-8-CG-L)-575'
- ① CXK-1313-70-1-1957-D-100%  
REM POLE TAG # ABANDONED POLE  
10' X AIS # 6 STL PINS/INSULATORS # 6 LA's  
3-336.4 KCM WP AL PEI (N1S) E. SIDE H-2-CG-P  
3-336.4 KCM WP AL PEI (N1S) W. SIDE H-8-CG-L  
10' X AIS # 6 STL PINS/INSULATORS  
3-336.4 KCM WP AL PEI (N1S) E. SIDE H-8-WT-L  
3-336.4 KCM WP AL PEI (N1S) W. SIDE H-8-CG-L  
ASC # 2 CMC'S (W) WIRE  
HD GUY FR (W) WIRE  
EX CFF SEC 8 WIRE W/PP

- ② CXK-206207-70-1-37-1957-D-60%  
REM POLE TAG # ABANDONED POLE  
10' X AIS # 6 STL PINS/INSULATORS # 6 LA's  
3-336.4 KCM WP AL PEI (N1S) E. SIDE H-2-CG-P  
3-336.4 KCM WP AL PEI (N1S) W. SIDE H-8-CG-L  
10' X AIS # 6 STL PINS/INSULATORS  
3-336.4 KCM WP AL PEI (N1S) E. SIDE H-8-WT-L  
3-336.4 KCM WP AL PEI (N1S) W. SIDE H-8-CG-L  
ASC # 2 CMC'S (W) WIRE  
HD GUY FR (W) WIRE  
EX AT+T CBL (N1S) @ 22'
- ③ CXK-622463-70-1-1964-D-100%  
REM POLE TAG # ABANDONED POLE  
10' X AIS # 6 STL PINS/INSULATORS # 6 LA's  
3-336.4 KCM WP AL PEI (N1S) E. SIDE H-2-CG-P  
3-336.4 KCM WP AL PEI (N1S) W. SIDE H-8-CG-L  
10' X AIS # 6 STL PINS/INSULATORS  
3-336.4 KCM WP AL PEI (N1S) E. SIDE H-8-WT-L  
3-336.4 KCM WP AL PEI (N1S) W. SIDE H-8-CG-L  
2 SETS OF PEI BRKT TAPES  
10' X STRAPS # 6 STL PINS/INSULATORS  
10' X AIS # 6 WD PINS  
3-600A PD'S (BARS IN) E. SIDE # BD "A"  
UG TO OH FEED OF H-2-CG-P  
TERM MTS BRKT # BRKT WIRE - E. SIDE  
TERM MTS BRKT  
600 KCM 3P GUY CP FILLED TERMINATOR  
600 KCM 3P FILE CBL DTS POLE # UNCLIP  
1-0' SECT OF 4" PVC U-CHANNEL  
3-600A PD'S (BARS IN) W. SIDE # BD "B"  
UG TO OH FEED OF H-8-CG-L  
TERM MTS BRKT # BRKT WIRE - W. SIDE  
3-500 KCM CU 12-15KV TERMINATORS  
3-500 KCM CU 12-15KV JKT'S CBL  
DTS POLE # UNCLIP  
4-10' SECTIONS OF 4" PVC U-CHANNEL  
2 CONDHT ADAPTERS  
EX AT+T CBL BY POLE NOT ATTACHED
- ④ CXK-622462-70-1-1964-D-100%  
REM POLE TAG # ABANDONED POLE  
10' X AIS # 6 WD PINS  
3-336.4 KCM WP AL PEI (N1S) E. SIDE H-2-CG-P  
3-336.4 KCM WP AL PEI (N1S) W. SIDE H-8-CG-L  
3-336.4 KCM WP AL PEI (N1S) E. SIDE H-8-WT-L  
10' X AIS # 6 WD PINS # 3 LA's  
3-336.4 KCM WP AL PEI (N1S) E. SIDE H-8-WT-L  
3-336.4 KCM WP AL PEI (N1S) W. SIDE H-8-CG-L  
PEI BRKT TAPES (W) SIDE  
10' X AIS  
3-600A PD'S (BARS IN) W. SIDE # BD "A"  
UG TO OH FEED OF H-8-CG-L  
TERM MTS BRKT # BRKT WIRE - W. SIDE  
TERM MTS BRKT  
600 KCM 3P GUY CP FILLED TERMINATOR  
600 KCM 3P FILE CBL DTS POLE # UNCLIP  
1-8' SECTIONS OF 4" PVC U-CHANNEL  
CONDHT ADAPTERS  
EX AT+T CBL (N1S) @ 24'
- ⑤ CXK-1313-45-1-1957-D-60%  
REM POLE TAG # ABANDONED POLE  
10' X AIS # 6 WD PINS  
3-336.4 KCM WP AL PEI (N1S) E. SIDE H-2-CG-P  
3-336.4 KCM WP AL PEI (N1S) W. SIDE H-8-CG-L  
10' X AIS # 6 WD PINS  
3-336.4 KCM WP AL PEI (N1S) E. SIDE H-8-WT-L  
3-336.4 KCM WP AL PEI (N1S) W. SIDE H-8-CG-L  
E. POLE # 4 DUP SEC (N1S)  
CFF 8' WIRE # PE W/PP  
EX AT+T CBL (N1S) @ 22'

- ⑥ CXK-13134-50-3-24-1957-D-60%  
REM POLE TAG # ABANDONED POLE  
10' X AIS # 6 STL PINS/INSULATORS  
6-336.4 KCM WP AL PEI (N1S)  
10' X AIS # 6 STL PINS/INSULATORS  
3-336.4 KCM WP AL PEI (N1S) ST. SIDE  
3-336.4 KCM WP AL PEI (N1S) FLD. SIDE  
7' HX WS 2-LA's # 2-LPC's  
50KVA 1P DB TRANSF.  
4346X7620-129/240V  
358E. SET #1/0 TRI SEC (N1) # 4 DUP SEC (S)  
EX AT+T CBL (N1S) # 4 DUP SEC (S)
- ⑦ CXK-13135-50-3-24-1957-D-60%  
REM POLE TAG # ABANDONED POLE  
10' X AIS # 6 WD PINS  
6-336.4 KCM WP AL PEI (N1S)  
D7BX STRAPS # 3 BVS (W) NO WIRE  
10' X AIS # 6 WD PINS  
3-336.4 KCM WP AL PEI (N1S) ST. SIDE H-8-WT-L  
3-336.4 KCM WP AL PEI (N1S) FLD. SIDE H-8-CG-L  
3-LA's # 3-LPC's - FLD. SIDE  
300 KVAR CAPACTOR (3-100KVA UNITS)  
TAPED TO H-8-CG-L  
SIDE GUY (G) TO CFF POLE - 27'  
TERM MTS BRKT # BRKT WIRE - W. SIDE  
#1/0 TRI LP (SW) TO BLDG #2150-35'  
358E. SET #4 DUP SEC (N1)  
3-336.4 KCM WP AL PEI (N1S) W. SIDE H-8-CG-L  
EX CFF 8' WIRE # PE W/PP  
EX AT+T CBL (N1S) # 4 DUP SEC (S)
- ⑧ CXK-220621-30-5-1958-D-100%  
REM POLE TAG # ABANDONED POLE  
10' X AIS # 6 STL PINS/INSULATORS  
E. POLE # 4 DUP SEC (N1)  
2-1/2 WIRE # 175W WIRE AREA WIRE WIRE  
EX AT+T CBL (N1S)



REMOVAL SYM #6

TRANS DATA	
CO #	# CON
KVA	ABC

REMOVAL SYM #8

TRANS DATA	
CO #	# CON
KVA	ABC

**SERVICE POINT (A) #2150 W. 15<sup>TH</sup> ST.**

- EX 358 BLDG R/L
- EX 3-500KCM 3" PIPE, W/CLIP # 4
- REM 3P MTR #226 # FINAL REAR
- EX 400A 3P PFE SW
- EX E. POLE BLDG R/L
- EX 3"36 CU 2" PIPE # W/CLIP
- REM 1P MTR #2162894 # FINAL REAR
- EX 200A 1P SW SW

MAXIMUM RMS SYMMETRICAL FAULT CURRENT AVAILABLE AT SERVICE ENTRANCE IS \_\_\_\_\_ AMPS, 3PHASE, \_\_\_\_\_ VOLTS

THE CUSTOMER SHALL PROVIDE THE GROUNDING ELECTRODE CONDUCTOR AND GROUNDING ELECTRODE TO THE SERVICE ENTRANCE LOCATION.

