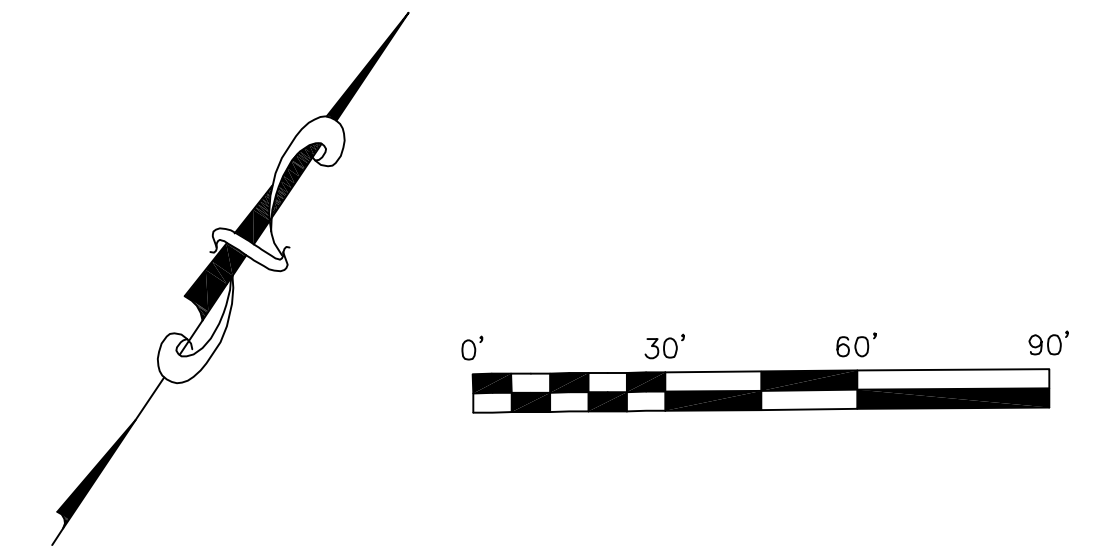


Parking / Structural Engineer:
THP Limited, Inc.
100 East Eighth Street
Cincinnati, Ohio 45202
513.241.3222

Mechanical / Electrical / Plumbing Engineer:
Karpinski Engineering
3135 Euclid Avenue
Cleveland, Ohio 44115
216.391.3700 v

Landscape Architect:
Knight and Stolar
3029 Prospect Avenue
Cleveland, Ohio
216.391.0910 v

Civil Engineer:
Bedell Tucci
254 West Market Street
Akron, Ohio 44303
330.375.9225 v



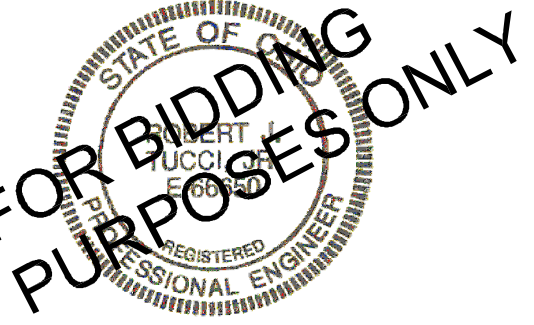
NOTE: SITE POST DEVELOPED STORMWATER RUNOFF WILL NOT CHANGE FROM PRE-DEVELOPED FLOWS SINCE THE RUNOFF COEFFICIENT FOR BOTH PRE AND POST CONDITIONS IS THE SAME.

IF ODOT HAS COMPLETED IMPROVEMENTS WITHIN THE R/W PRIOR TO COMPLETION OF TRI-C PROJECT, CONTRACTOR IS RESPONSIBLE FOR REPAIRING OR REPLACING DAMAGED IMPROVEMENTS IN KIND.

EXISTING CONDITIONS FOR REFERENCE ONLY. SEE SITE SURVEY FOR EXISTING CONDITIONS.

ALL WORK WITHIN THE RIGHT OF WAY IS TO BE BY OTHERS AND NOT INCLUDED WITHIN THIS CONTRACT. EXCEPT FOR ALTERNATE, SEE KEYNOTE 17, IF INCLUDED IN THIS PACKAGE.

THE CONTRACTOR IS REQUIRED TO OBTAIN A SEWER PERMIT FROM THE CITY OF CLEVELAND, DIVISION OF WATER POLLUTION CONTROL.



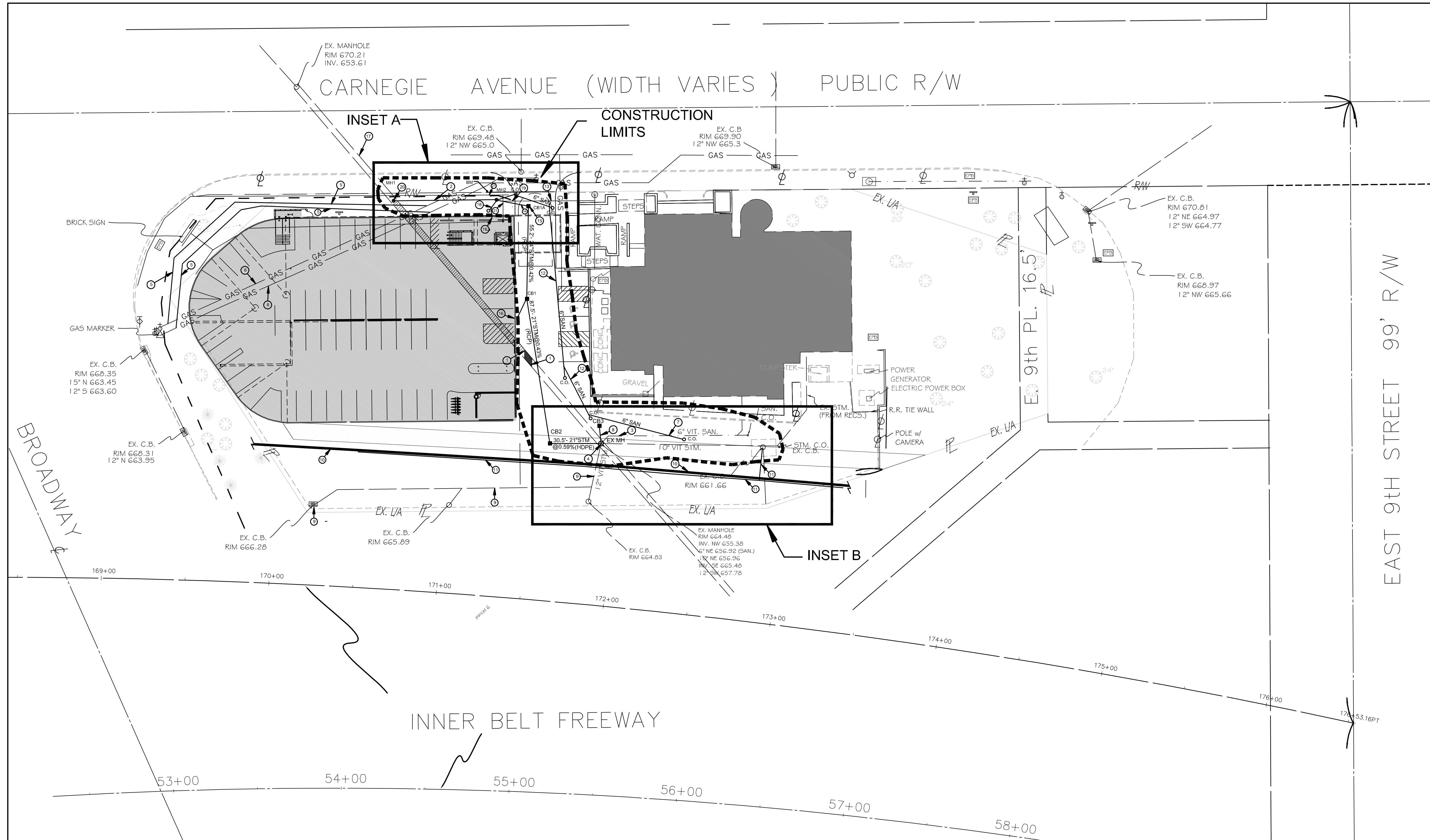
DATE ISSUED
- 03-08-2012
100% STORM/SANITARY
SITE PACKAGE

Richard Fleischman + Partners Architects, Inc.

1020 Huron Road, Suite 101
Cleveland, Ohio 44115
office@studioRFA.com
Tel: 216.771.0090

Site Utilities

C103



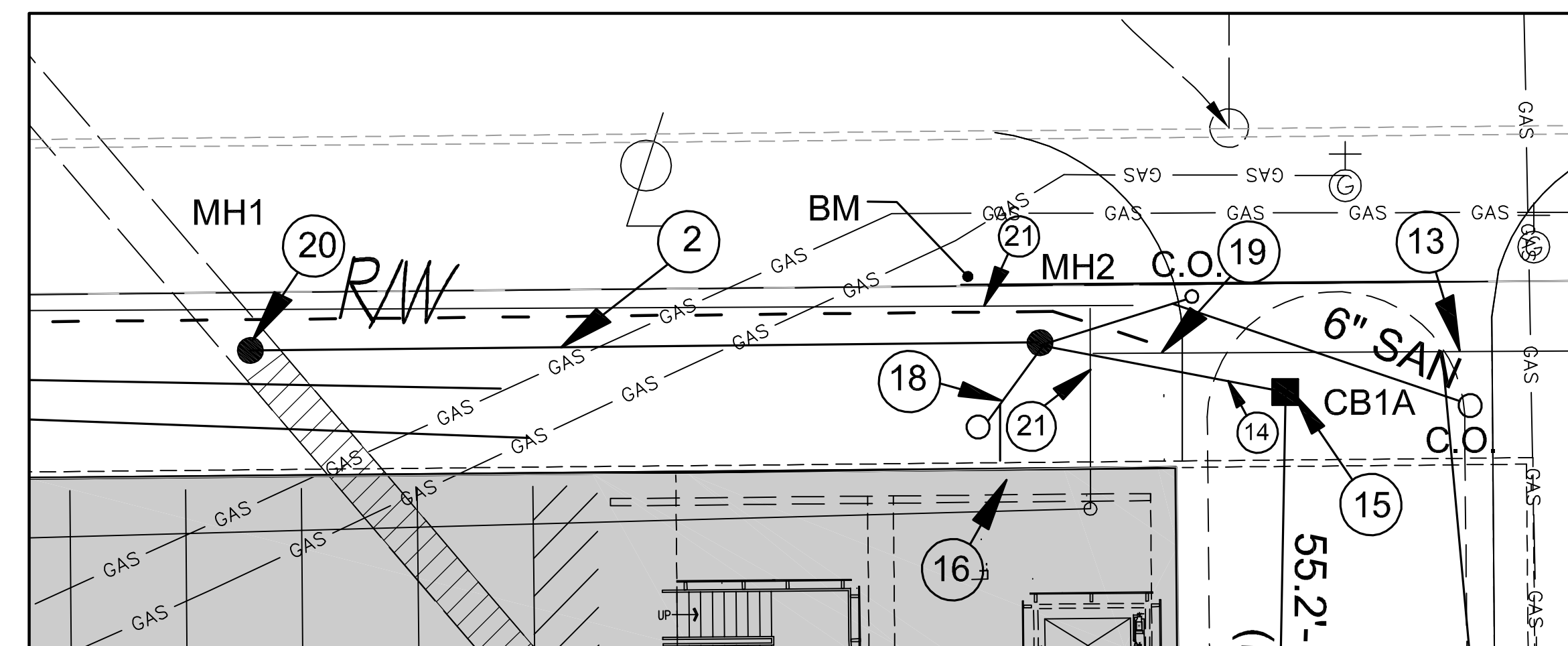
UTILITY KEYNOTES

- 1 NO. 4 SEWER TO REMAIN ACTIVE DURING CONSTRUCTION. DUE TO LIMITATIONS IN SLOPE, CONTRACTOR WILL NEED TO PROVIDE TEMPORARY CONVEYANCE FOR EXISTING STORM AND SANITARY FLOWS FROM NO. 4 SEWER UNTIL NEW STORM AND SANITARY SEWERS BECOME OPERATIONAL. ONCE NEW SEWERS ARE OPERATIONAL, PLUG NO. 4 SEWER ON EACH SIDE OF NEW STORM SEWER.
- 2 61.2' - 24" PVC @ 0.57%
- 3 EXISTING 6-INCH SANITARY LATERAL TO BE ABANDONED IN PLACE BETWEEN NEW TIE-IN AND EXISTING MANHOLE. PLUG LINE AT MH.
- 4 SEE STORM SCHEDULE EXMH STRUCTURE. NO. 4 BRICK SEWER UPSTREAM TO BE GROUDED BY OTHERS. DOWNSTREAM NO. 4 BRICK SEWER TO BE ABANDONED AS NOTED IN KEYNOTE 1 AFTER COMPLETION OF PROPOSED STORM SEWER PLUG NO. 4 BRICK SEWER TO NORTH WEST.
- 5 EXISTING GAS LINES TO BE RE-ROUTED AROUND PARKING GARAGE PER DOMINION EAST OHIO STANDARDS. COORDINATE RE-LOCATION WITH DOMINION EAST OHIO. ALL GAS WORK BY OTHERS.
- 6 ABANDON OR REMOVE AS DIRECTED BY DOMINION EAST OHIO. ALL GAS WORK BY OTHERS.
- 7 CONNECT EXISTING 6-INCH SANITARY LATERAL TO PROPOSED SANITARY LATERAL.
- 8 10.6'-12" RCP @ 4.72%
- 9 STORM SEWER AND CATCH BASIN REMOVED BY OTHERS.
- 10 RETAINING WALL. BY OTHERS.
- 11 UNDERDRAINS BY OTHERS.
- 12 NEW 6-INCH PVC SDR 35 SANITARY LATERAL @ 1% MIN. PROVIDE CLEANOUTS AS SHOWN.
- 13 EXISTING 1-1/2-INCH WATER LINE FROM RECORD DRAWINGS FIELD VERIFY REPORT FINDINGS TO ARCHITECT.
- 14 19.4'-24" STM @ 0.46% (RCP)
- 15 FOR CB1A, PROVIDE 24" SUMP AND A TRAP ON 24" WEST OUTLET PIPE.

- NIC 16 SEE MECHANICAL PLANS FOR EXACT LOCATION WHERE UTILITY EXITS THE BUILDING.
- 17 ALTERNATE - RELINE EXISTING NO. 4 BRICK SEWER FROM MH1 TO EXISTING MH IN CARNEGIE AVENUE PER CITY OF CLEVELAND STANDARDS.
- 18 12" - 6-INCH PVC SDR 35 SANITARY LATERAL @ 1% MIN. INCREASE DIAMETER TO 6 INCH AT CLEANOUT. CONNECT TO MH2 WITH DROP CONNECTION PER DETAIL 2/C106.
- 19 EXISTING 1-1/2" SPRINKLER LINE IS TO REMAIN. CONTRACTOR TO PROTECT, CUT AND CAP JUST TO THE EAST OF MH2.
- 20 DOGHOUSE MANHOLE ON NO. 4 SEWER. ONCE SEWER IS OPERATIONAL, PLUG UPSTREAM NO. 4 SEWER TO SOUTHEAST.
- 21 EXISTING 1-1/4" SPRINKLER LINE REMOVE LINE IN CONFLICT WITH PROPOSED MANHOLE AND UTILITIES. CUT AND CAP REMAINDER OF LINE.

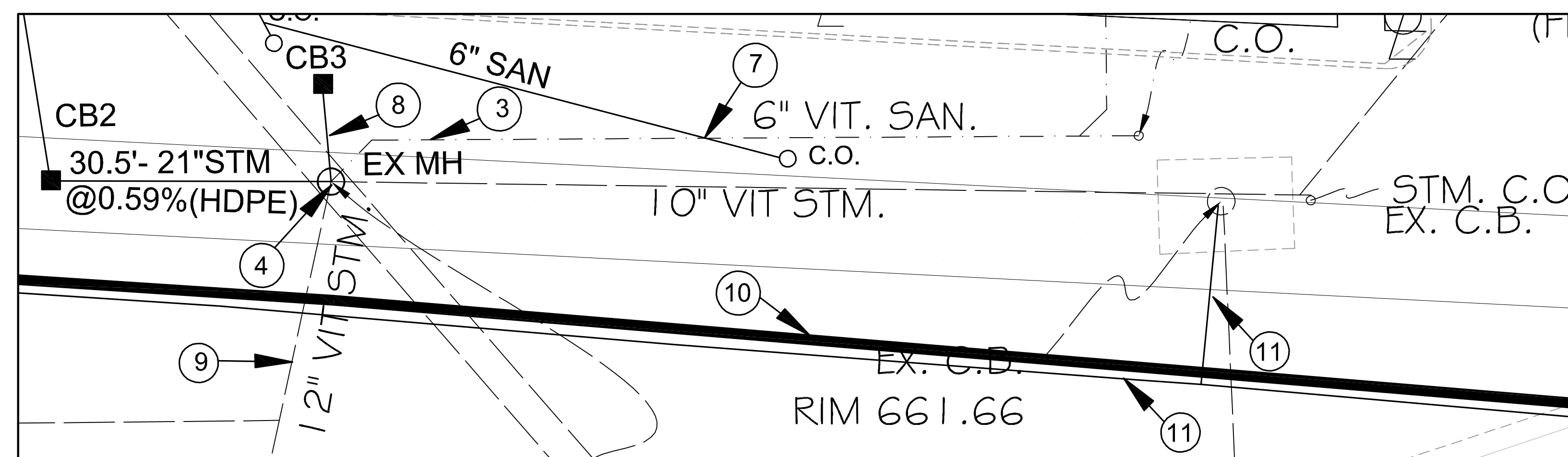
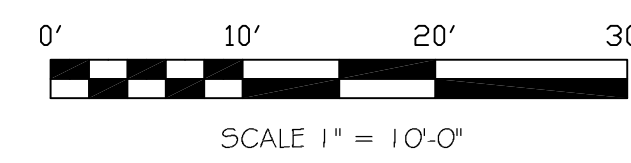
UTILITY GENERAL NOTES

1. EXTEND SITE UTILITIES TO WITHIN 5 FEET OF FUTURE BUILDING CAP AND STAKE LOCATION. CONNECTION BY GARAGE CONTRACTOR.
 2. PROVIDE TEMPORARY ASPHALT PAVEMENT OVER TRENCHING THAT OCCURS WITHIN THE PAVEMENT AREAS. SEE DETAIL 7/C106.
 3. WHERE PAINT MARKINGS ARE DISTURBED, REPAINT PER DETAIL 8/C106.
 4. DURING CONSTRUCTION ALL OPEN SEWER CUTS IN VEHICULAR TRAFFIC AREAS ARE TO BE COVERED WITH STEEL PLATES CAPABLE OF SUPPORTING ALL SITE VEHICULAR TRAFFIC.
 5. ALL OPEN SEWER CUTS IN PEDESTRIAN AREAS ARE TO BE FILLED WITH GRAVEL.
- NIC 1 NO. 4 BRICK SEWER TO BE GROUDED.
 - 2 ABANDON NO. 4 BRICK SEWER PER KEYNOTE 1.

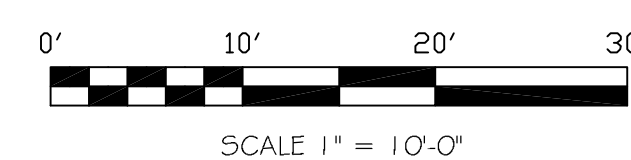


BENCHMARK
O.M. #42 FOUND AND USED ELEVATION 669.73
NORTHING = 667133.59
EASTING = 2192134.62
DO NOT DISTURB WITHOUT FIRST CONTACTING CUYAHOGA COUNTY SURVEY DEPT.

INSET A



INSET B



STRUCTURE TABLE

NO.	STRUCT. TYPE.	RIM ELEV.	INVERT ELEV.	NORTHING	EASTING
CB1	ODOT 2-3	669.1	654.82 21" SE 654.82 24" NW 658.0 10" S	667094.02	2192190.55
CB1A*	ODOT 2-3	669.66	654.59 24" NW,SE	667140.12	2192160.04
CB2	ODOT 2-3	665.5	655.2 21" NW, NE	667030.54	2192250.54
CB3	ODOT 2-2B	665.0	660.00 12" SW	667055.94	2192269.01
MH1	SEE 1/C106 48" DIA.	671.0	654.15 24" NE 654.15 EX. No. 4	667097.37	219091.83
MH2	SEE 1/C106 96" DIA.	670.9	654.50 24" SW 654.50 24" SE 654.70 6" NE (SAN) 657.4 6" S (DROP SAN)	667132.51	2192142.15
EXMH	EXIST. MH	664.48	656.96 10" NE (EX) 659.50 12" NW 655.38 21" SW 655.38 No.4 NW 655.48 No.4 SE	667047.67	2192275.70

* CATCH BASIN CB1A TO HAVE A 24" SUMP AND A TRAP ON 24" OUTLET PIPE.

LEGEND

- NEW CATCH BASIN
- CLEAN OUT SEE DETAIL 4/C106
- NEW MANHOLE
- SANITARY LATERAL
- STORM SEWER

UNDERGROUND UTILITIES
TWO WORKING DAYS BEFORE YOU DIG
CALL 1-800-362-2764 (TOLL FREE)
OHIO UTILITIES PROTECTION SERVICE
NON-MEMBERS
MUST BE CALLED DIRECTLY