

## **Gibson, Ornette**

---

**From:** Edward Kisiel <EKisiel@HNTB.com>  
**Sent:** Thursday, November 10, 2011 3:04 PM  
**To:** 'Maddern, Rodger A.'  
**Cc:** 'Hedrick, Mark'; Malone, Curtice; Gibson, Ornette; 'utilities@ohio.net'; Kenneth Fertal; kishmael@hntb.com  
**Subject:** Cleveland Innerbelt - Commercial Rd (at Central Viaduct - south) - IntelliFiber  
**Attachments:** 2011-11-10 - RoadwayGateway-Commercial-Parking.pdf

Rodger,

After our discussions in the field last Thursday, 11/03 about IntelliFiber duct run, I made a call to Rick Colello and he confirmed ducts were built approx. having depth of cover at 36" requiring your duct run to be lowered (as we discussed) through the Gateway parking lot, see attached PDF. Not much can be done about raising or adjusting parking lot grading to mitigate since the slope is maxed out. Also noticed clearance might be getting tight on Commercial Rd. (I can provide more data on this if needed).

Thanks,  
Ed

**Edward J. Kisiel, PE**

**HNTB Corporation**

Cleveland Innerbelt Bridge Project  
2519 Detroit Avenue, Suite 202  
Cleveland, Ohio 44113

Tel (216) 522-1140  
Fax (216) 522-0554  
Direct (216) 377-5846  
[ekisiel@hntb.com](mailto:ekisiel@hntb.com)  
[www.hntb.com](http://www.hntb.com)

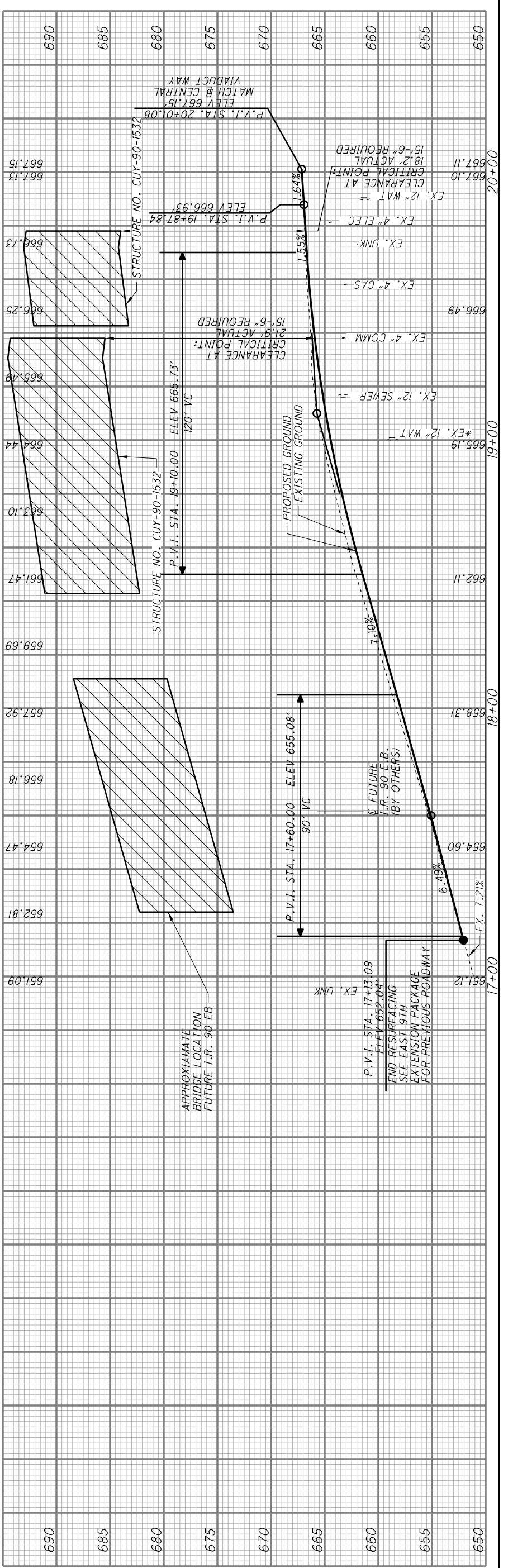
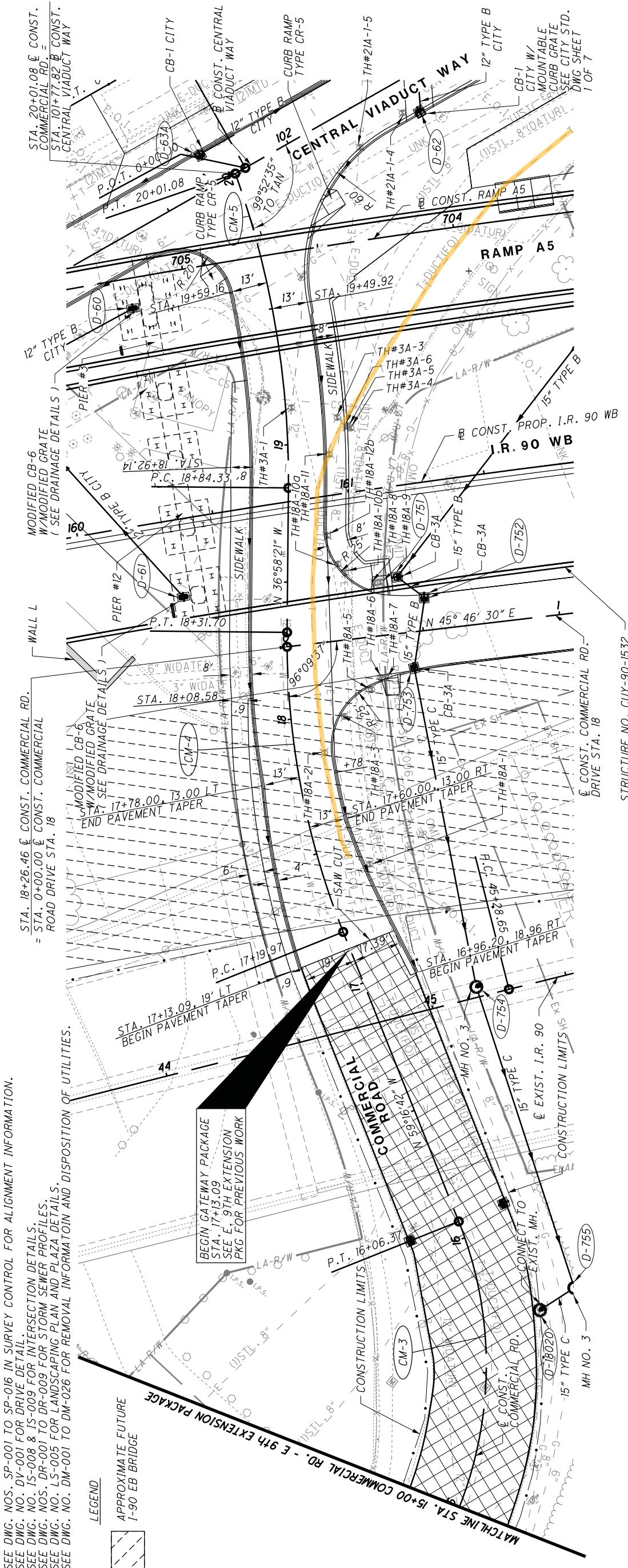
(TO BE TURNED OFF AT AFC SUBMITTAL)

CHECK PRINT (INITIAL & DATE)	CHECKED BY:	MADE BY:
	BACKCHECKED BY:	
CORRECTED BY:	VERIFIED BY:	

NOTE: SEE DWG. NOS. SP-001 TO SP-016 IN SURVEY CONTROL FOR ALIGNMENT INFORMATION.  
 SEE DWG. NO. DV-001 FOR DRIVE DETAIL.  
 SEE DWG. NOS. IS-008 & IS-009 FOR INTERSECTION DETAILS.  
 SEE DWG. NOS. DR-001 TO DR-009 FOR STORM SEWER PROFILES.  
 SEE DWG. NO. LS-005 FOR LANDSCAPING PLAN AND PLAZA DETAILS.  
 SEE DWG. NO. DM-001 TO DM-026 FOR REMOVAL INFORMATION AND DISPOSITION OF UTILITIES.

LEGEND  
 APPROXIMATE FUTURE I-90 EB BRIDGE

BEGIN GATEWAY PACKAGE  
 STA. 17+13.09  
 SEE E 9TH EXTENSION  
 PKG FOR PREVIOUS WORK



NO.	REVISIONS	DATE
A	FINAL SUBMITTAL	08/17/2011
B	FINAL SUBMITTAL ADDITIONAL INFORMATION	08/03/2011
C	FINAL SUBMITTAL TO ODOT	09/30/2011
D	FINAL COMPLIANCE	11/03/2011

DESIGN AGENCY  
**WLSH HNTB**  
 WASHINGTON STATE TRANSPORTATION DEPARTMENT

90  
**INNERBELT BRIDGE**  
 CLEARLANDS

ROADWAY  
 GATEWAY

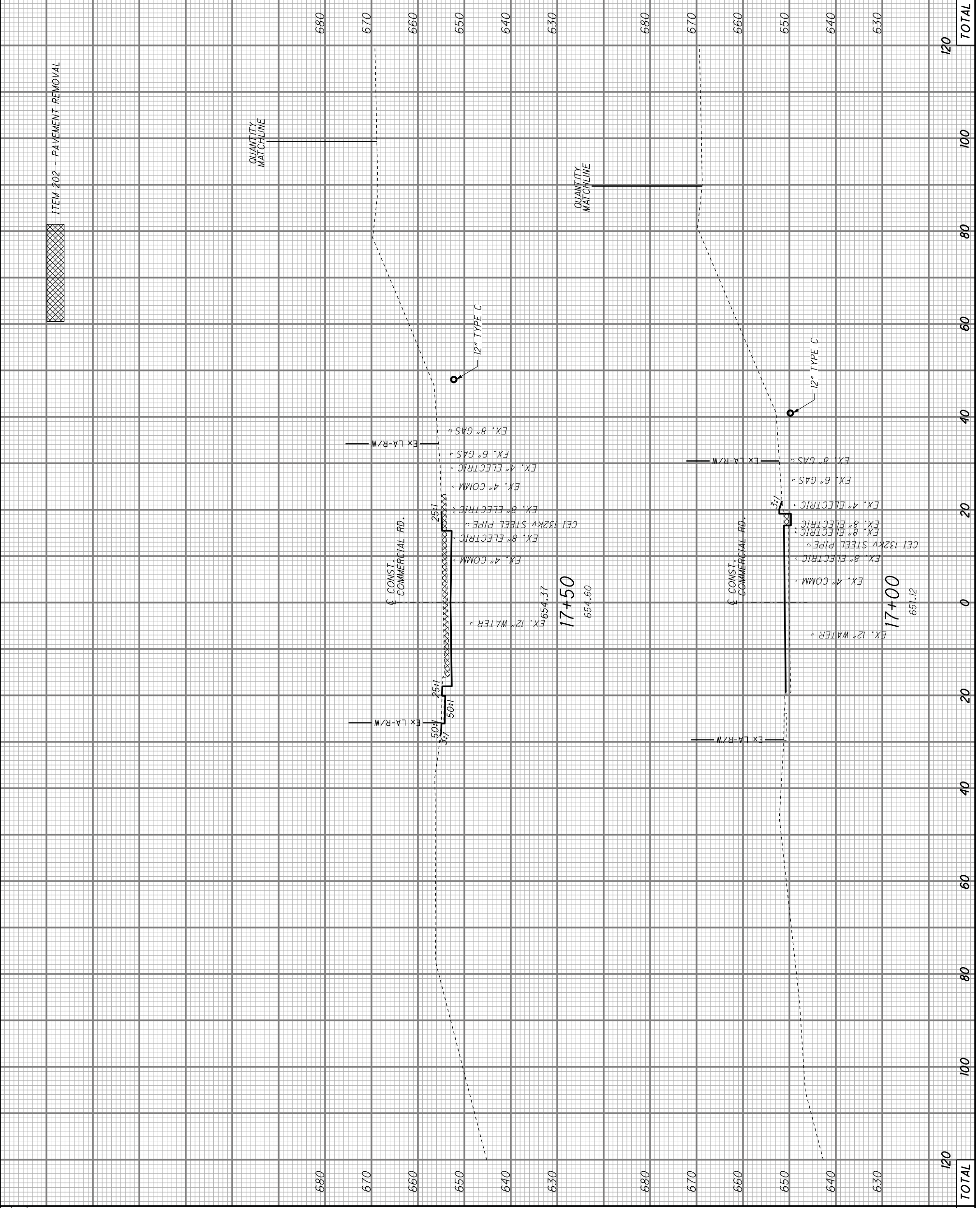
CUY-90-14.90  
 SCALE IN FEET  
 HORIZONTAL  
 0 10 20 40  
 DESIGNED: JTL  
 CHECKED: JRG  
 DRAWING NO.: PP-102A  
 145  
 349

PLAN AND PROFILE  
 COMMERCIAL ROAD  
 STA. 17+00 TO STA. 20+01.08

(TO BE TURNED OFF AT AFC SUBMITTAL)

MADE BY:	BACKCHECKED BY:	VERIFIED BY:
CHECK PRINT (INITIAL & DATE)	CHECKED BY:	CORRECTED BY:

SEEDING	SO. YDS.
END WIDTH	



END AREA	VOLUME	
	CUT	FILL
120		
TOTAL		

146	349
-----	-----

DESIGNED	JTL
CHECKED	JRC

0 10 20  
HORIZONTAL SCALE IN FEET

CUY-90-14.90

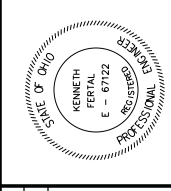
DWG. NO. XS-130

ROADWAY GATEWAY



CROSS SECTIONS - COMMERCIAL STA. 17+00 TO STA. 17+50

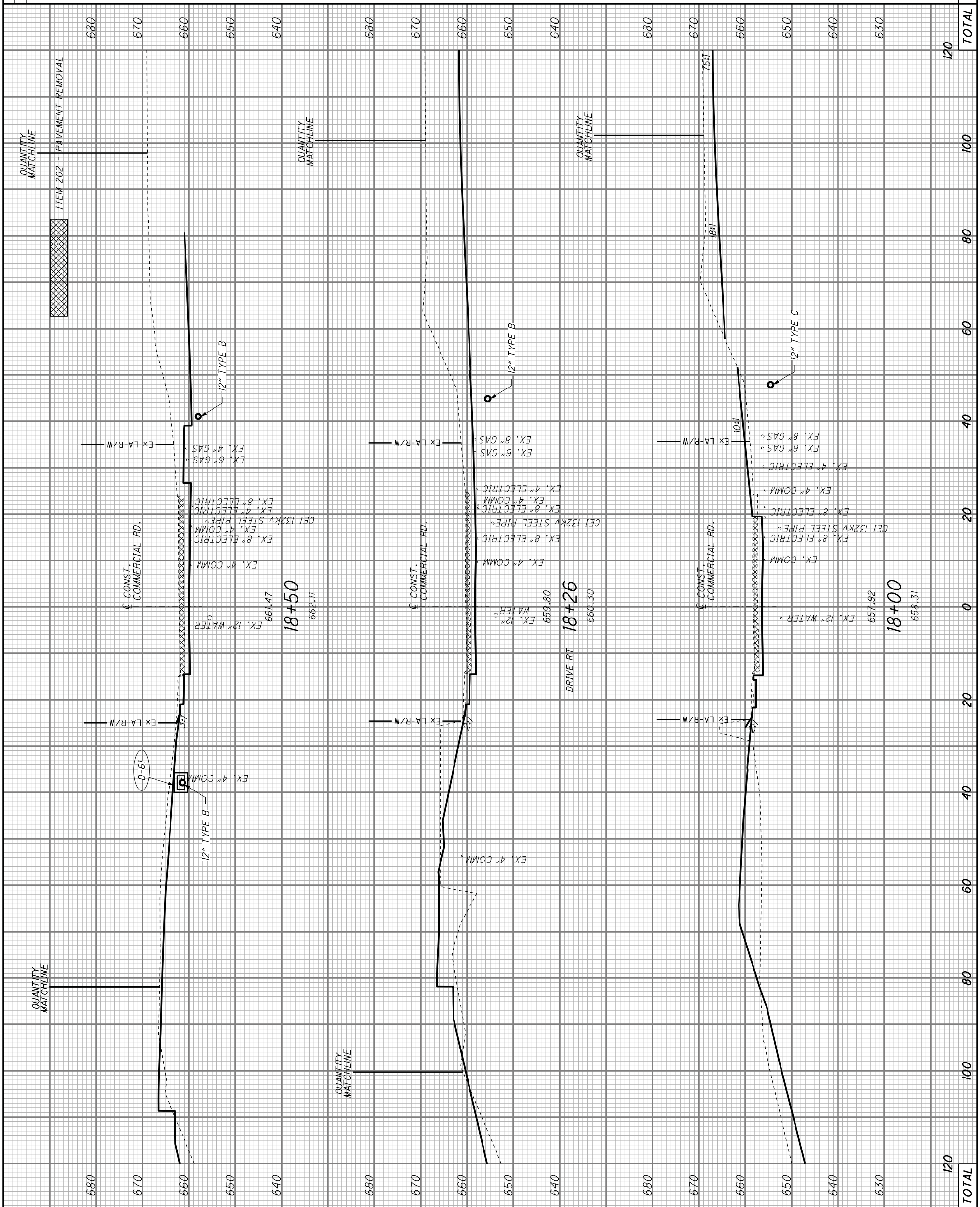
NO.	REVISIONS	DATE
A	INTERIM SUBMITTAL	12/29/2010
B	ADDENDUM TO INTERIM SUBMITTAL	01/19/2011
C	FINAL SUBMITTAL	08/03/2011
D	FINAL SUBMITTAL TO ODOT	09/30/2011
E	FINAL COMPLIANCE	11/03/2011



(TO BE TURNED OFF AT AFC SUBMITTAL)

CHECK PRINT (INITIAL & DATE) CHECKED BY: \_\_\_\_\_  
 MADE BY: \_\_\_\_\_  
 BACKCHECKED BY: \_\_\_\_\_  
 CORRECTED BY: \_\_\_\_\_  
 VERIFIED BY: \_\_\_\_\_

SEEDING  
 END SO.  
 WIDTH YDS.



END AREA	VOLUME	CUT	FILL
120	TOTAL		

DESIGNED: JTL  
 CHECKED: JRG  
 SCALE IN FEET  
 HORIZONTAL  
 0 5 10 20

ROADWAY  
 GATEWAY



DESIGN AGENCY  
**WILSH HNTB**  
 WALSH CONSTRUCTION

CUY-90-14.90  
 DWG. NO. XS-131

CROSS SECTIONS - COMMERCIAL  
 STA. 18+00 TO STA. 18+50

NO. REVISIONS

NO.	DATE	REVISIONS
A	12/29/2010	INTERIM SUBMITTAL
B	01/19/2011	ADDENDUM TO INTERIM SUBMITTAL
C	08/03/2011	FINAL SUBMITTAL
D	09/30/2011	FINAL SUBMITTAL TO ODOT
E	11/03/2011	FINAL COMPLIANCE

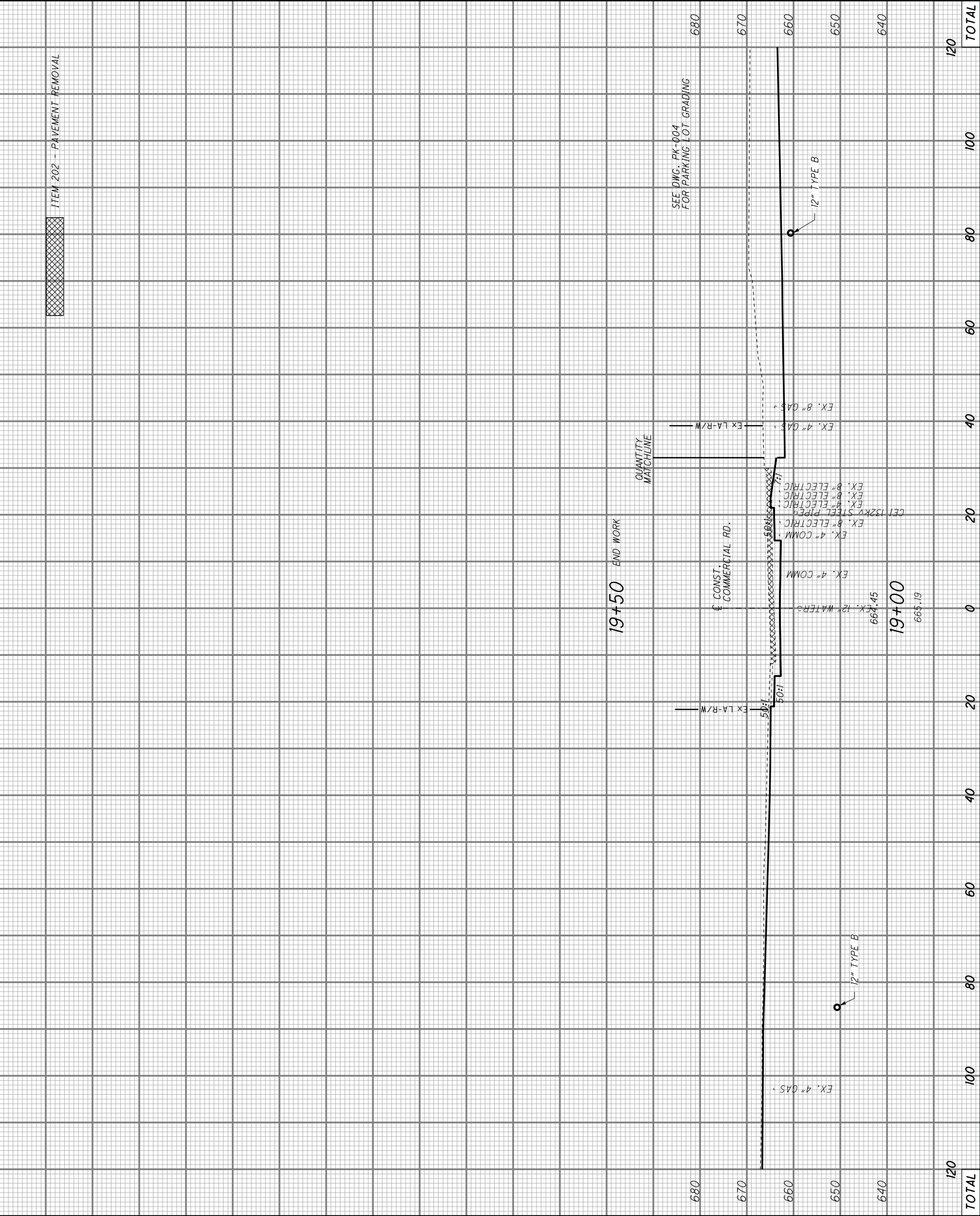
STATE OF OHIO  
 REGISTERED PROFESSIONAL ENGINEER  
 KEENEATH FERTAL  
 E - 6712

147  
 349

(TO BE TURNED OFF AT AFC SUBMITTAL)

MADE BY:	BACKCHECKED BY:	VERIFIED BY:
CHECK PRINT (INITIAL & DATE)	CHECKED BY:	CORRECTED BY:

SEEDING  
END SO.  
WIDTH YDS.



120  
TOTAL

100

80

60

40

20

0

20

40

60

80

100

120  
TOTAL

EX. 4" GAS

12" TYPE B

19+00

19+50 END WORK

CONST. COMMERCIAL RD.

QUANTITY MATCHLINE

SEE DWG. PK-004 FOR PARKING LOT GRADING

EX. 8" ELECTRIC  
EX. 8" ELECTRIC  
EX. 4" ELECTRIC  
EX. 4" ELECTRIC  
EX. 8" ELECTRIC  
EX. 4" ELECTRIC  
EX. 4" COMM.  
EX. 4" COMM.  
EX. 4" COMM.  
EX. 12" WATER  
EX. 4" GAS  
EX. 4" GAS

ITEM 202 - PAVEMENT REMOVAL

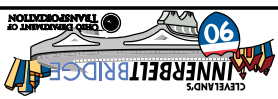
148  
349

DWG. NO. XS-132

CUY-90-14.90

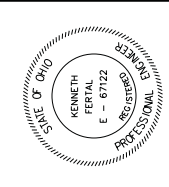
CROSS SECTIONS - COMMERCIAL  
STA. 19+00 TO STA. 19+38

ROADWAY GATEWAY



DESIGN AGENCY  
WALSH CONSTRUCTION

NO.	REVISIONS	DATE
A	INTERIM SUBMITTAL	12/29/2010
B	ADDENDUM TO INTERIM SUBMITTAL	01/19/2011
C	FINAL SUBMITTAL	08/03/2011
D	FINAL SUBMITTAL TO ODOT	09/30/2011
E	FINAL COMPLIANCE	11/03/2011





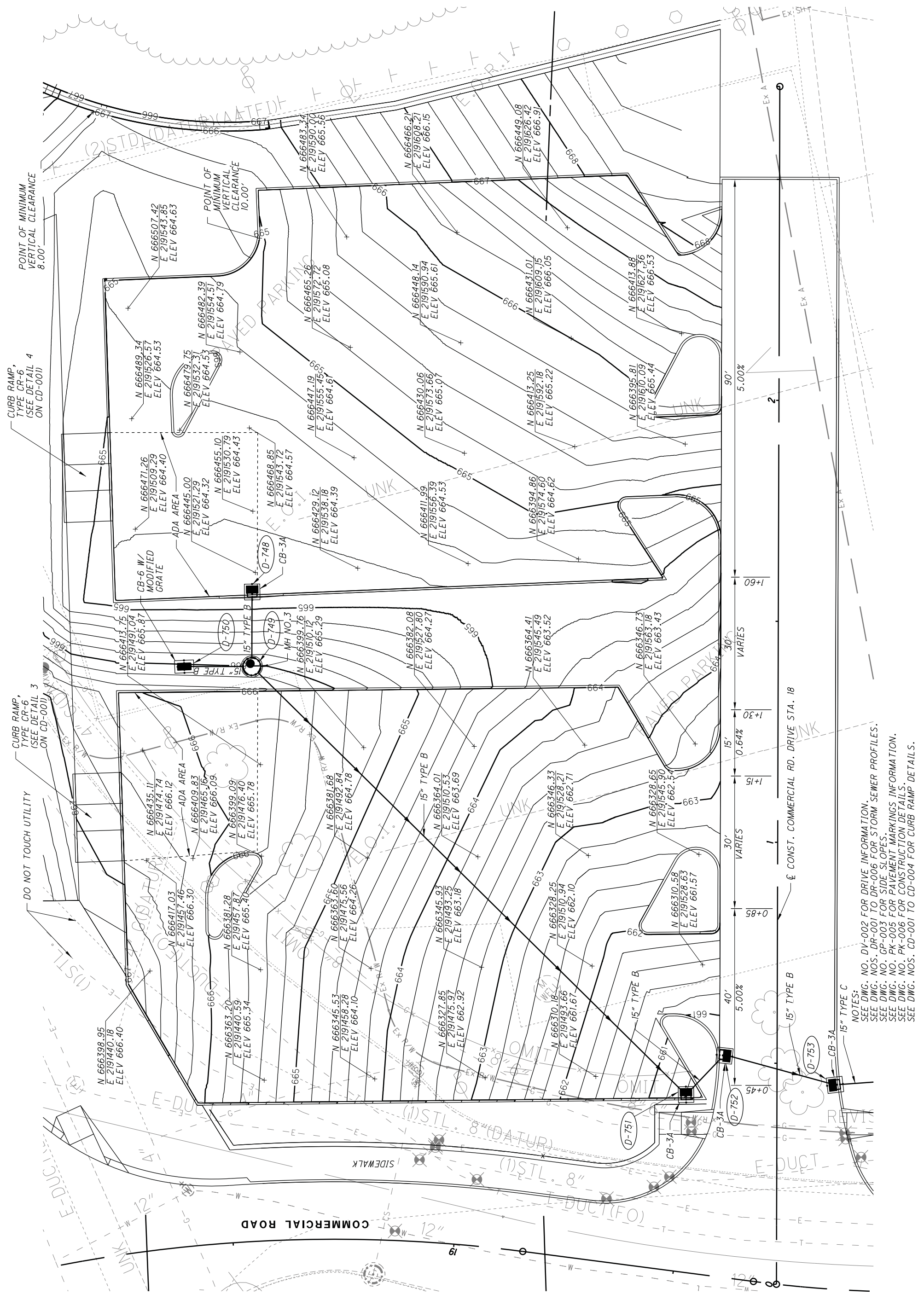
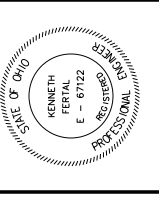
ROADWAY  
GATEWAY



DESIGN AGENCY  
**WILSH HNTB**

PARKING LOT PLAN  
GRADING  
DOWNTOWN NEIGHBORHOOD PARKING

NO.	REVISIONS	DATE
A	FINAL SUBMITTAL TO ODOT	08/02/2011
B	FINAL SUBMITTAL TO ODOT	09/30/2011
C	FINAL RESUBMITTAL	11/03/2011



NOTES:  
SEE DWG. NO. DV-002 FOR DRIVE INFORMATION.  
SEE DWG. NOS. DR-001 TO DR-006 FOR STORM SEWER PROFILES.  
SEE DWG. NO. GP-003 FOR SIDE SLOPES.  
SEE DWG. NO. PK-005 FOR PAVEMENT MARKINGS INFORMATION.  
SEE DWG. NO. PK-006 FOR CONSTRUCTION DETAILS.  
SEE DWG. NOS. CD-001 TO CD-004 FOR CURB RAMP DETAILS.

MADE BY:	CHECKED BY:	BACKCHECKED BY:	VERIFIED BY:
CHECK PRINT (INITIAL & DATE)			

(TO BE TURNED OFF AT AFC SUBMITTAL)