


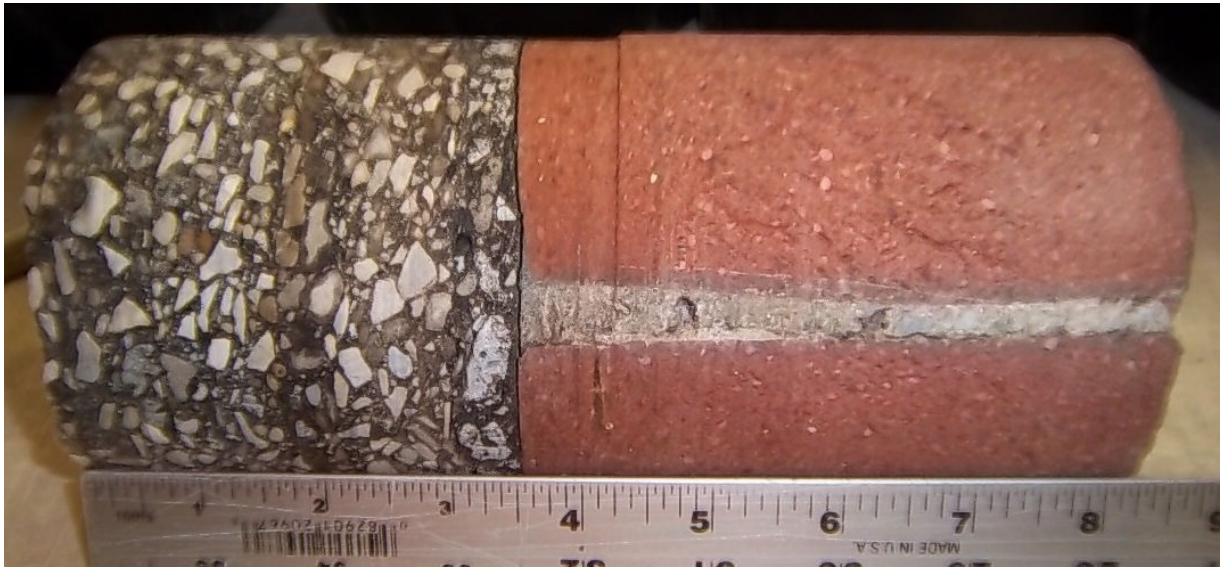


Core #43  
 Location: SE, North on Professor Ave.  
 7 1/4" Asphalt



Core #44  
 Location: SE, Center on Professor Ave.  
 1" Asphalt / 9 1/2" Concrete


|   |  |                          |
|---|--|--------------------------|
|  | <b>City of Cleveland</b><br><b>Task Order #52</b><br><b>Fairfield/Professor Ave. and W. 10th</b><br><b>Cleveland, OH</b> | <b>Core #43 and #44</b>  |
|   | Scale: NA   Drawn By: EWP   Date: 2/28/2012  | PSI Project No.: 0141914 |



Core #45  
 Location: SE, South on Professor Ave.  
 3 1/2" Asphalt / 4 3/4" Brick



Core #46  
 Location: SW, South on W. 10<sup>th</sup> St.  
 3" Asphalt / 4" Brick

|   |  |                          |
|---|--|--------------------------|
|  | <b>City of Cleveland</b><br><b>Task Order #52</b><br><b>Fairfield/Professor Ave. and W. 10th</b><br><b>Cleveland, OH</b> | <b>Core #45 and #46</b>  |
|   | Scale: NA   Drawn By: EW   Date: 2/28/2012   | PSI Project No.: 0141914 |



Core #47  
 Location: SW, Center on W. 10<sup>th</sup> St.  
 7 ½" Asphalt / 9" Concrete



Core #48  
 Location: SW, West on W. 10<sup>th</sup> St.  
 2 ¾" Asphalt / 5" Brick



Core #49  
 Location: South Center of Intersection  
 3" Asphalt / 5 ½" Concrete




Core #50  
 Location: Center of Intersection  
 5 ¾" Asphalt / 6 ¾" Concrete



Core #51  
 Location: East Center of Intersection  
 2 ½" Asphalt / 4 ¾" Brick



Core #52  
 Location: NE, East on W. 10<sup>th</sup> St.  
 2 ½" Asphalt / 5" Brick

|   |  |                          |
|---|--|--------------------------|
|  | <b>City of Cleveland</b><br><b>Task Order #52</b><br><b>Fairfield/Professor Ave. and W. 10th</b><br><b>Cleveland, OH</b> | <b>Core #51 and #52</b>  |
|   | Scale: NA   Drawn By: EW   Date: 2/28/2012   | PSI Project No.: 0141914 |



Core #53  
Location: NE, North on W. 10<sup>th</sup> St.  
1" Asphalt / 5" Brick