



Core #26  
 Location: North Center of Intersection  
 3 7/8" Asphalt / 6" Concrete



Core #27  
 Location: NE Center of Intersection  
 4 1/4" Asphalt / 5 3/4" Concrete



Core #28  
 Location: South Center of Intersection  
 3 ¾" Asphalt / 6 ¾" Concrete



Core #29  
 Location: NW Center of Intersection  
 3 ¾" Asphalt / 6 ¼" Concrete



Core #30  
 Location: Center of Intersection  
 3" Asphalt / 9 1/2" Concrete



Core #31  
 Location: NE, North on Literary Ave.  
 2 3/4" Asphalt / 5 1/4" Brick



Core #32  
 Location: NE, Center on Literary Ave.  
 3 1/2" Asphalt / 4 1/2" Brick



Core #33  
 Location: NE, East on Literary Ave.  
 3 7/8" Asphalt / 4 5/8" Brick

**psi** Information  
 To Build On  
 Engineering • Consulting • Testing

City of Cleveland  
 Task Order #52  
 Professor Ave. and Literary Ave.  
 Cleveland, OH

Core #32 and #33

Scale: NA | Drawn By: EW | Date: 2/28/2012

PSI Project No.: 0141914



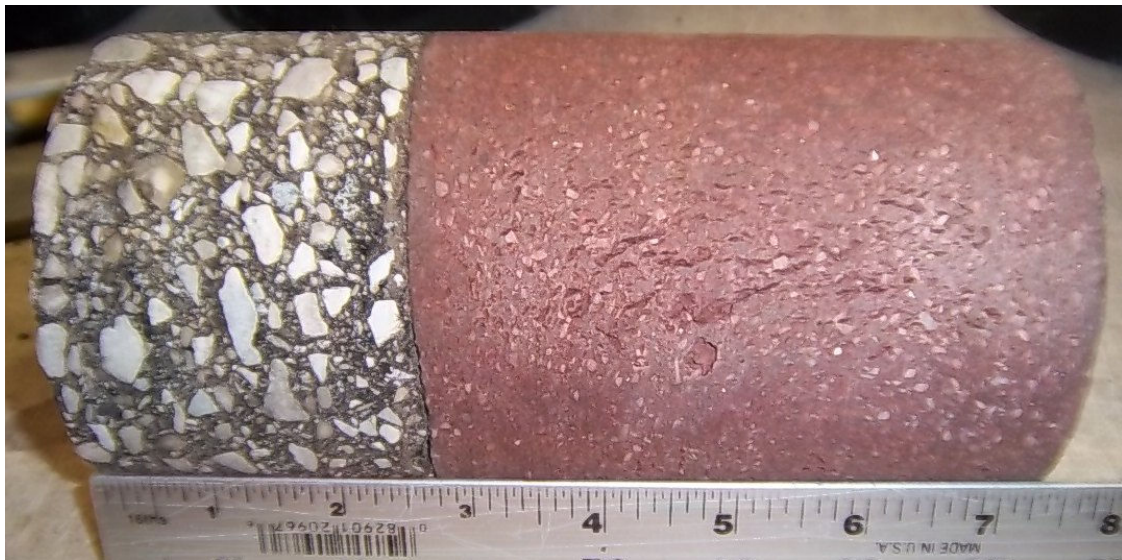
Core #34  
 Location: NW, North on Professor Ave.  
 2 ½" Asphalt / 4 ½" Brick




Core #35  
 Location: NW, Center on Professor Ave.  
 7 ¼" Asphalt / 8 ¾" Concrete



Core #36  
 Location: NW, West on Professor Ave.  
 2" Asphalt / 5" Brick



Core #37  
 Location: SW, West on Literary Ave.  
 2 3/4" Asphalt / 4 3/4" Brick

	<b>City of Cleveland</b> <b>Task Order #52</b> <b>Professor Ave. and Literary Ave.</b> <b>Cleveland, OH</b>	<b>Core #36 and #37</b>
	Scale: NA   Drawn By: EW   Date: 2/28/2012	PSI Project No.: 0141914



Core #38  
 Location: SW, Center on Literary Ave.  
 3 3/8" Asphalt / 4 1/2" Brick




Core #39  
 Location: SW, South on Literary Ave.  
 2" Asphalt / 5" Brick



Core #40  
 Location: SE, South on Professor Ave.  
 4 ¼" Asphalt / 8" Concrete



Core #41  
 Location: SE, Center on Professor Ave.  
 8 ½" Asphalt

	<p>City of Cleveland          Task Order #52          Professor Ave. and Literary Ave.          Cleveland, OH</p>	<p>Core #40 and #41</p>
	<p>Scale: NA   Drawn By: EW   Date: 2/28/2012</p>	<p>PSI Project No.: 0141914</p>





Core #42  
Location: SE, East on Professor Ave.  
4 <sup>3</sup>/<sub>4</sub>" Asphalt / 6 <sup>3</sup>/<sub>4</sub>" Concrete

**psi** Information  
To Build On  
Engineering • Consulting • Testing

City of Cleveland  
Task Order #52  
Professor Ave. and Literary Ave.  
Cleveland, OH

Core #42

Scale: NA | Drawn By: EW | Date: 2/28/2012

PSI Project No.: 0141914