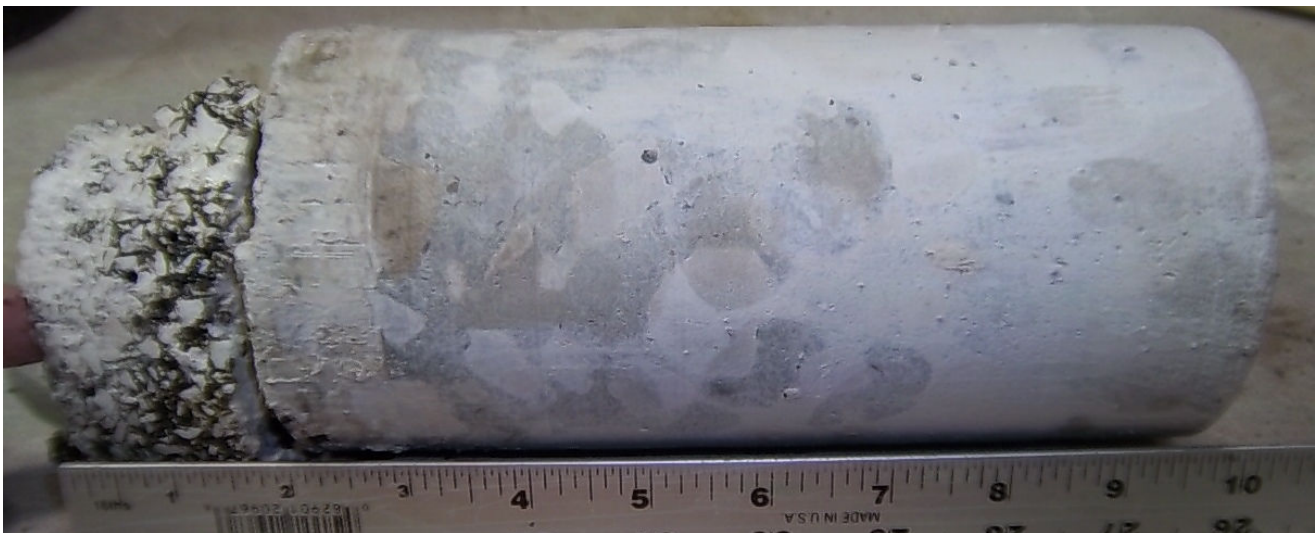





Core #54  
 Location: West Side of W. Lakeside Ave. and W. 6<sup>th</sup> St.  
 4 ¼" Asphalt / 7" Concrete



Core #55  
 Location: Center of W. Lakeside Ave. and W. 6<sup>th</sup> St.  
 2" Asphalt / 7 ½" Concrete


	<b>City of Cleveland</b> <b>Task Order #52</b> <b>West 6<sup>th</sup> St.</b> <b>Cleveland, OH</b>	<b>Core #54 and #55</b>
	Scale: NA   Drawn By: EW   Date: 2/28/2012	PSI Project No.: 0141914



Core #56  
 Location: East Side of W. Lakeside Ave. and W. 6<sup>th</sup> St.  
 11 ¼" Asphalt



Core #57  
 Location: West Side of W. 6<sup>th</sup> between W. Lakeside Ave. and Johnson Ct.  
 2" Asphalt / 13" Concrete

 <p><b>PSI</b> Information      To Build On      Engineering • Consulting • Testing</p>	<p>City of Cleveland          Task Order #52          West 6<sup>th</sup> St.          Cleveland, OH</p>	<p>Core #56 and #57</p>
	<p>Scale: NA   Drawn By: EW   Date: 2/28/2012</p>	<p>PSI Project No.: 0141914</p>




Core #58

Location: Center of W. 6<sup>th</sup> between W. Lakeside Ave. and Johnson Ct.  
 4 ¾" Asphalt / 7 ¾" Concrete



Core #59

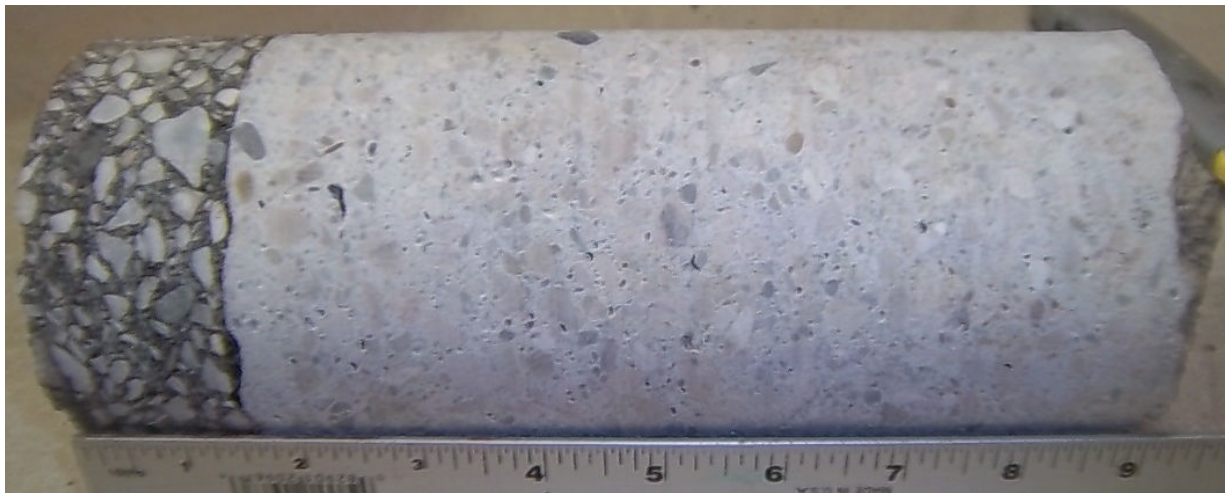
Location: East Side of W. 6<sup>th</sup> between W. Lakeside Ave. and Johnson Ct.  
 3" Asphalt / 10.5" Concrete

	<b>City of Cleveland</b> <b>Task Order #52</b> <b>West 6<sup>th</sup> St.</b> <b>Cleveland, OH</b>	<b>Core #58 and #59</b>
	Scale: NA   Drawn By: EW   Date: 2/28/2012	PSI Project No.: 0141914



Core #60

Location: West Side of W. 6<sup>th</sup> between Johnson Ct. and W. St. Clair Ave.  
 2 ¾" Asphalt / 6 " Concrete (Reinforcing Steel at 6")



Core #61

Location: Center of W. 6<sup>th</sup> between Johnson Ct. and W. St. Clair Ave.  
 1 ½" Asphalt / 7 ½" Concrete



Core #62

Location: East Side of W. 6<sup>th</sup> between Johnson Ct. and W. St. Clair Ave.  
7" Asphalt / 9 1/2" Concrete



Core #63


Location: West Side of W. 6<sup>th</sup> St. and W. St. Clair Ave.  
3" Asphalt / 8" Concrete



Core #64  
 Location: Center of W. 6<sup>th</sup> St. and W. St. Clair Ave.  
 10" Asphalt / 6 ½" Concrete



Core #65  
 Location: East Side of W. 6<sup>th</sup> St. and W. St. Clair Ave.  
 3 ½" Asphalt / 11" Concrete

	<b>City of Cleveland</b> <b>Task Order #52</b> <b>West 6<sup>th</sup> St.</b> <b>Cleveland, OH</b>	<b>Core #64 and #65</b>
	Scale: NA   Drawn By: EW   Date: 2/28/2012	PSI Project No.: 0141914