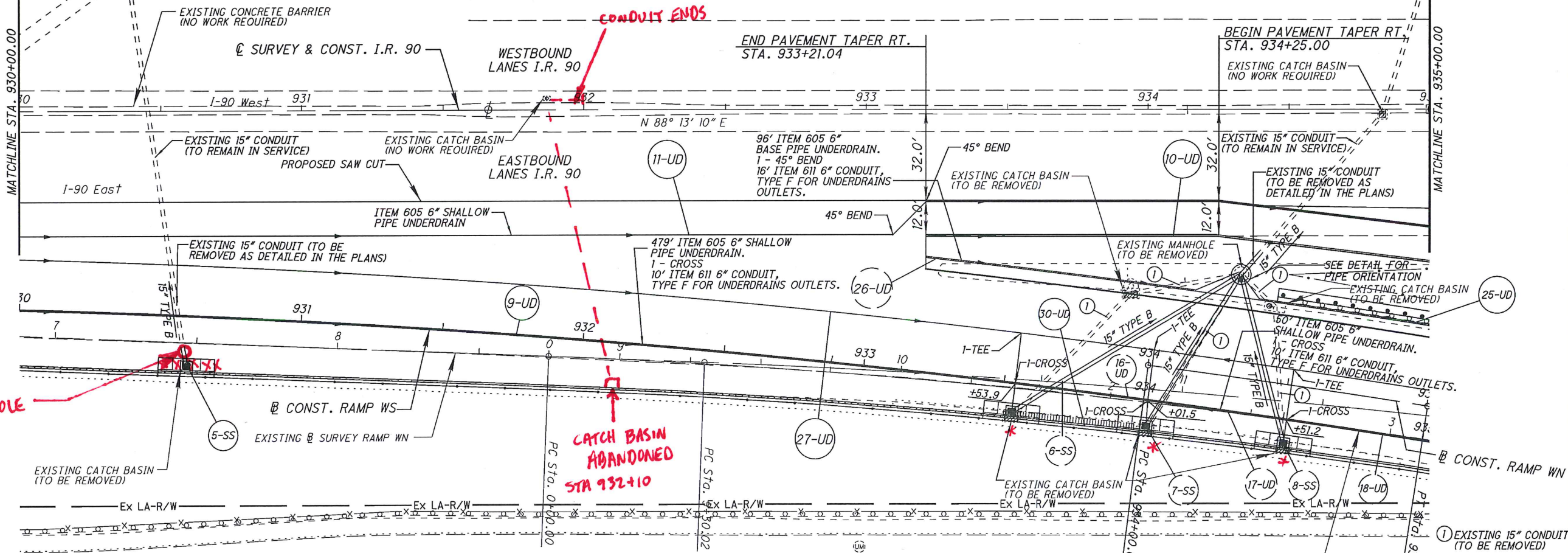


CALCULATED	BGM	CHECKED	ALL

DRAINAGE DETAILS - I.R. 90
 STA. 930+00.00 TO STA. 935+00.00



RAMP WS
 P.I. = Sta. 933+13.39
 D = 12° 28' 39" (RT)
 Dc = 1° 28' 09"
 R = 3,900.00'
 T = 426.34'
 L = 849.31'
 E = 23.23'
 e_{max} = 0.037
 C = 847.64'

NOTE: REMOVAL OF EXISTING CATCH BASINS SHALL BE DONE IN A MANNER THAT WILL NOT DAMAGE THE EXISTING RETAINING WALL FOOTING.
 NOTE APPLIES TO EXISTING CATCH BASINS AT:
 STA. 930+59.26
 STA. 933+53.86
 STA. 934+02.00
 STA. 934+51.20

9-SS NOT USED
 NOTE: FOR STORM SEWER PROFILES SEE SHEETS 196-198

FOR DRAINAGE QUANTITIES SEE SHEETS 106 - 108

915300P006.DGN SHEET 1

CUY-90-14.08
 187
 219

*CATCH BASINS PLACED, BUT NOT FLUSH WITH RETAINING WALL... BARRIER, SINGLE SLOPE, TYPE D MADE THICKER.