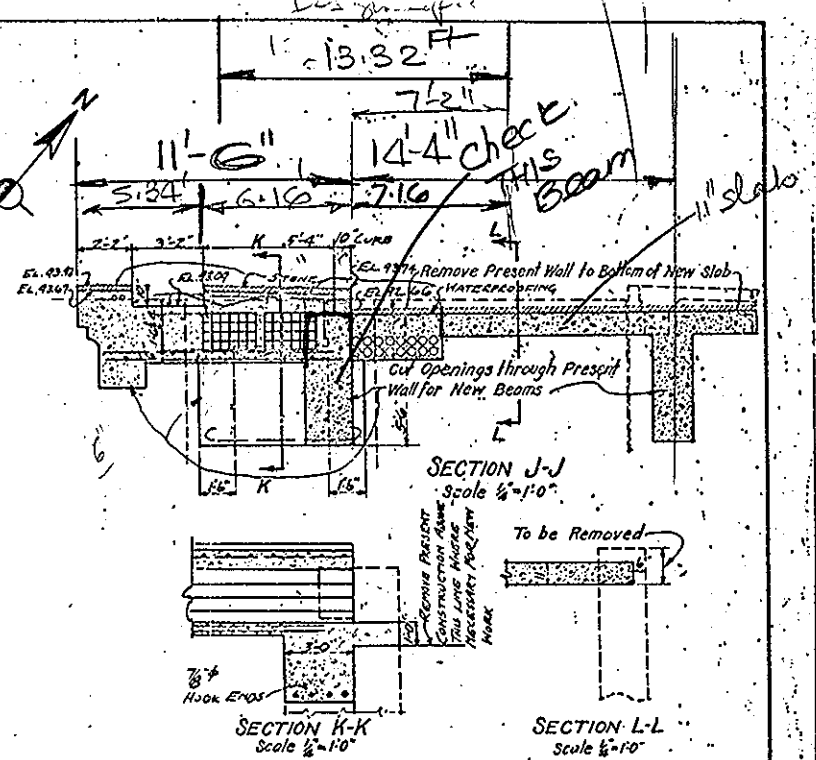
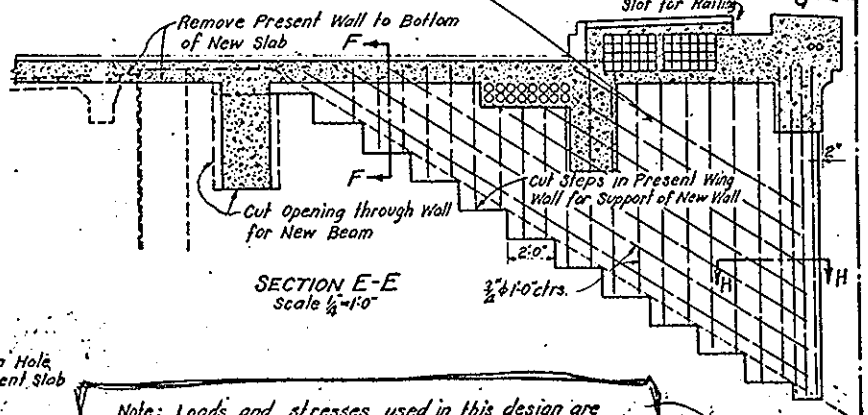
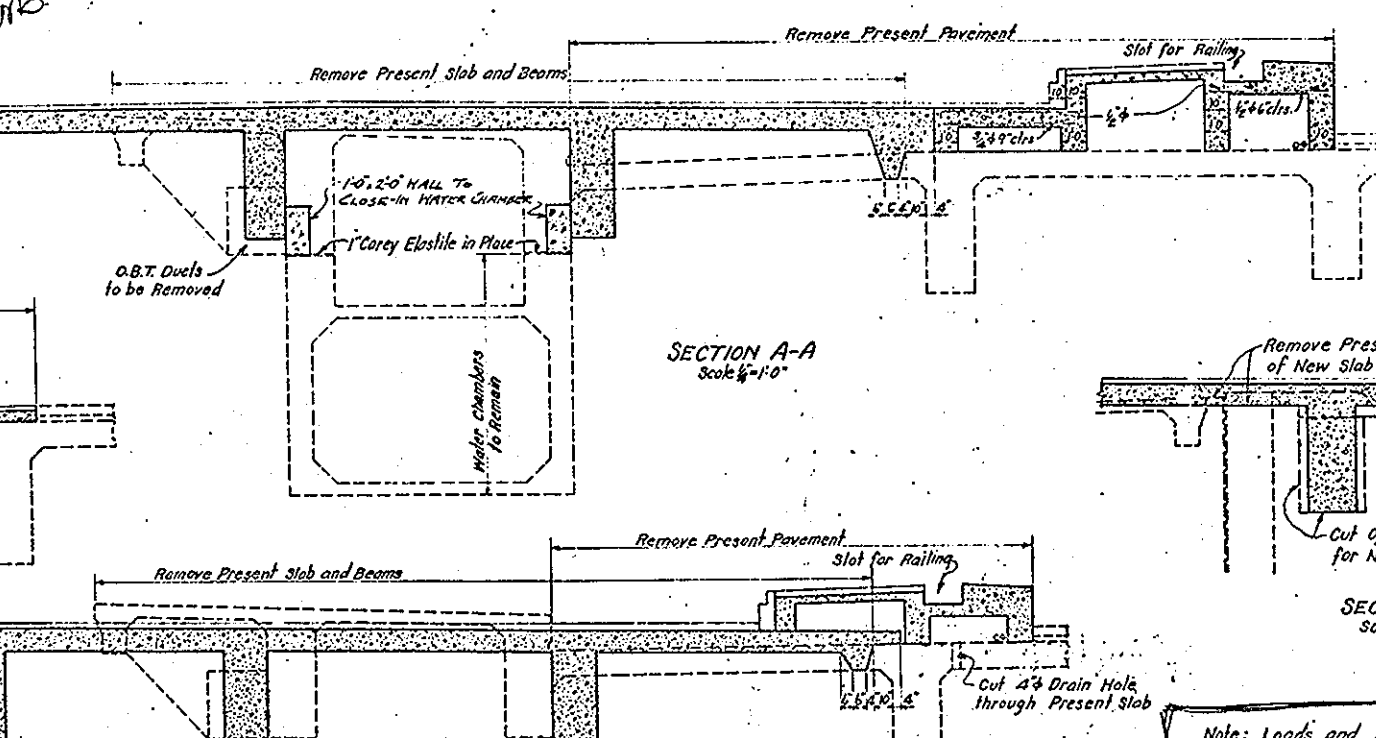
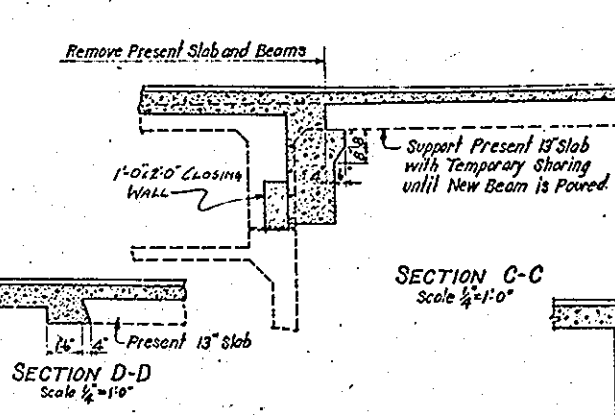
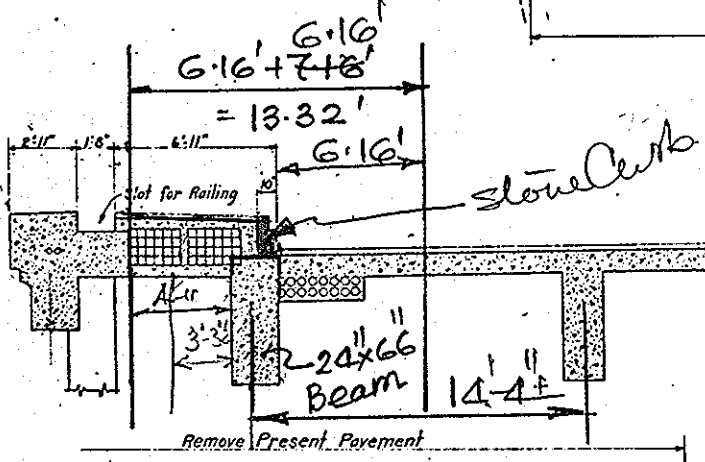


PLAN OF EXTENSION OF CENTRAL AVE. BRIDGE (Carnegie Ave.)
Scale 1/8" = 1'-0"



For Reinforcing Steel See Section J-J Draw No. 1111-10

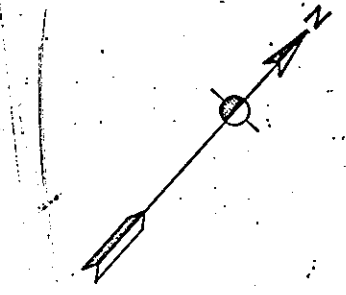
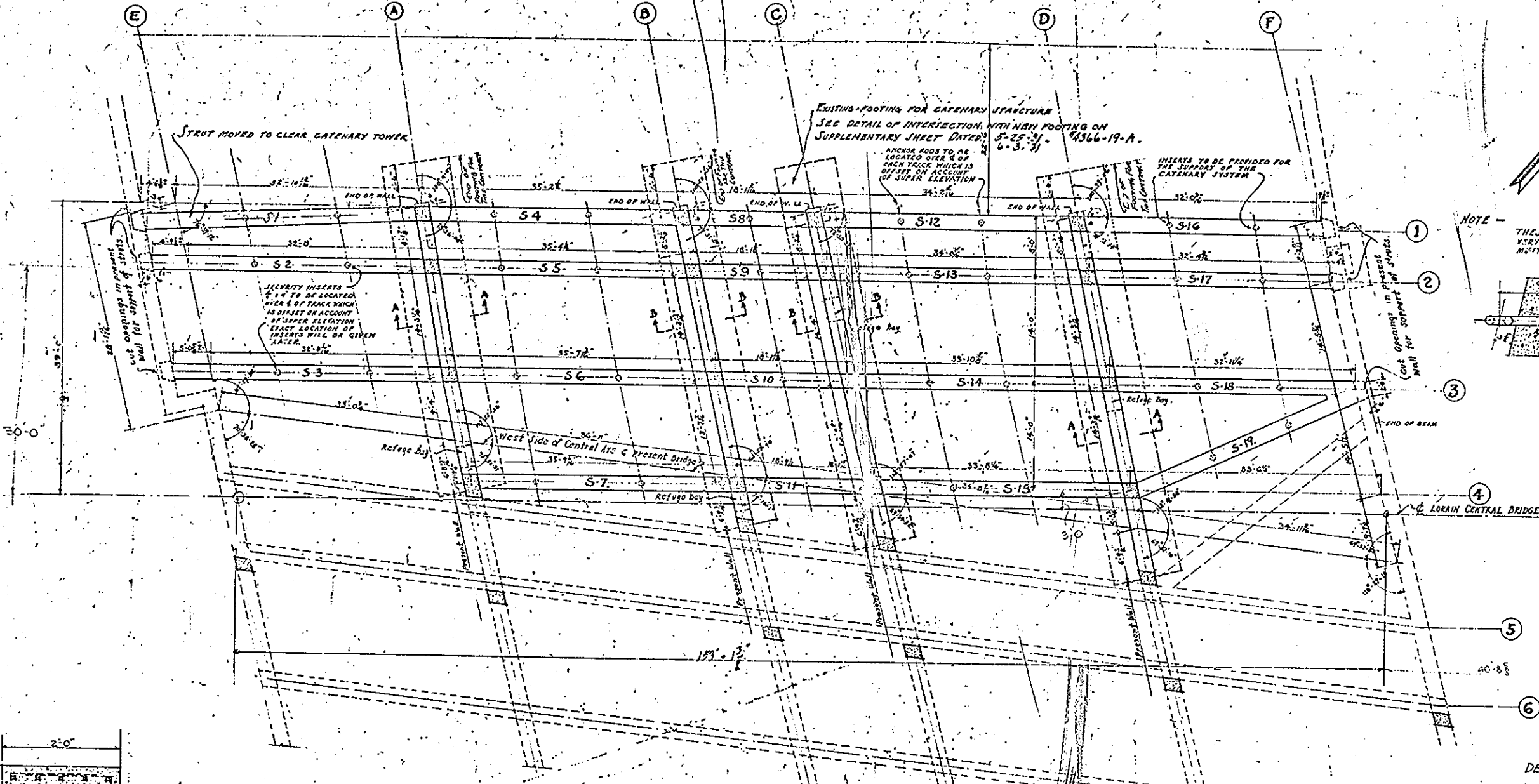


Note: Loads and stresses used in this design are those specified by the Ohio State Highway Department for Highway Structures for H-20 loading. (20 Ton Trucks)

APPROVED BY

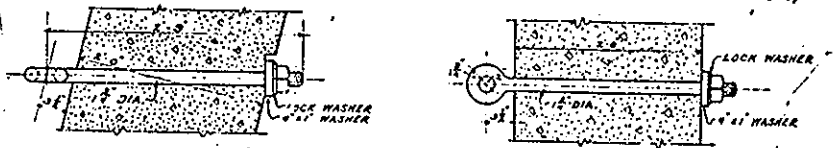
CO. COMM.	
CO. AUDITOR	
CO. ENG.	
BRIDGE ENG.	
CITY ENG.	

CUYAHOGA COUNTY	
BOARD OF COMMISSIONERS	COUNTY SURVEYOR
J. R. ZMUNT	F. R. WILLIAMS
J. H. HARRIS	COUNTY BRIDGE ENGINEER
W. E. COOK	A. M. FELGATE
LORAIN - CENTRAL BRIDGE CLEVELAND, O.	
CENTRAL AVE BRIDGE EXTENSION	
SCALE 1/4" = 1'-0"	DRAWING NO. 18
FILE NO. 4366	WILBUR WATSON AND F. R. WALKER CONSULTING ENGINEERS AND ARCHITECTS CLEVELAND
DR. DATE MADE	DRAWN BY
JAN. 23, 1920	V. W. WALKER
REV. BY	REMARKS

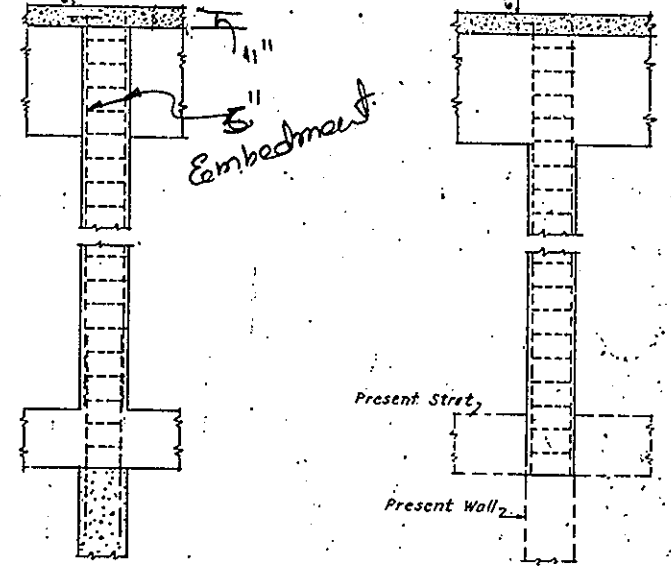


NOTE - THESE STRUTS ARE TO BE BUILT VERY CLOSE TO LIVE WIRES WHICH MUST BE PROTECTED.

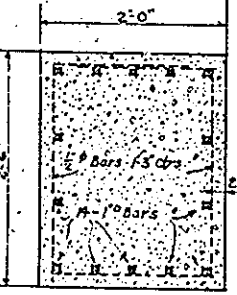
ALL PARTS OF ANCHORS & INSERTS FOR CATERMAY ATTACHMENTS TO BE HOT DIP GALVANIZED. ANCHOR RODS TO BE FORGED. (NOT WELDED)



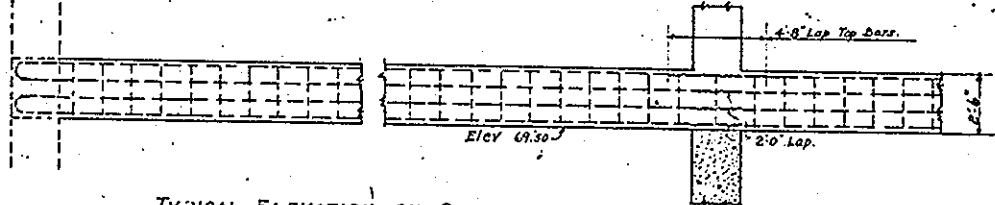
TYPICAL DETAILS OF ANCHOR RODS SCALE 1/2" = 1'-0"



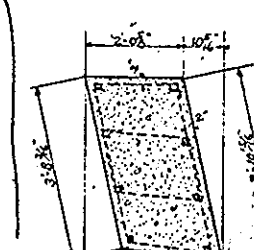
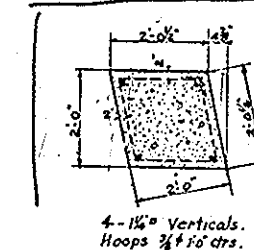
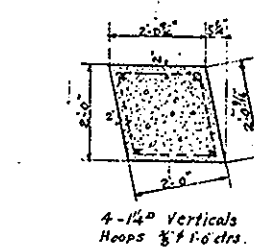
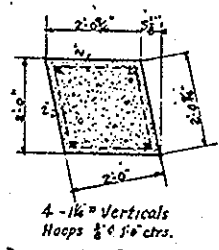
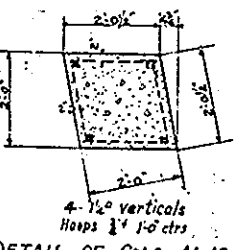
DETAIL OF COLS ON LINES 1-2-3-4 DETAIL OF COLS ON LINES 5-6.



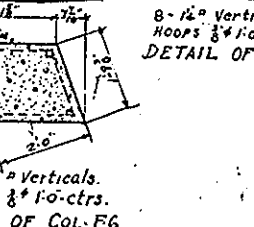
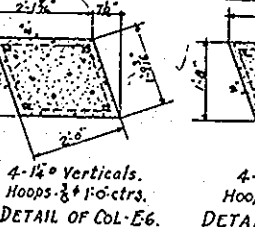
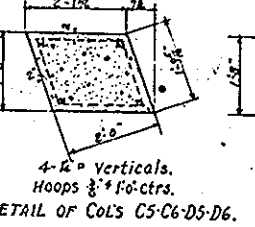
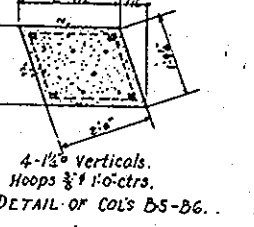
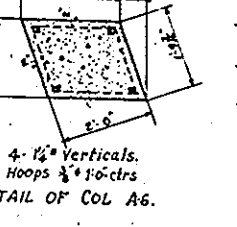
TYPICAL SECTION OF STRUTS S1 TO S19 INCL.



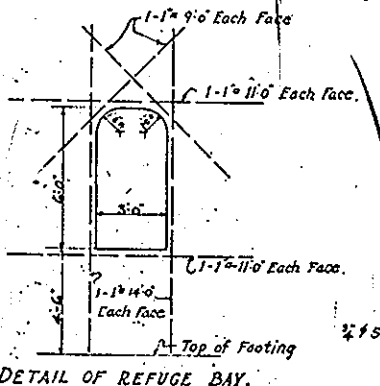
TYPICAL ELEVATION OF STRUTS.



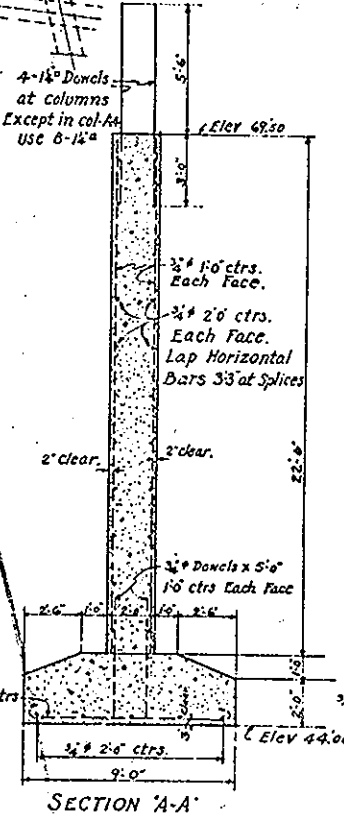
DETAIL OF COLS A1-A2-A3 - DETAIL OF COLS B1-B2-B3-B4 - DETAIL OF COLS C1-C2-C3-C4 - DETAIL OF COLS D1-D2-D3-D4 - DETAIL OF COL - A4.



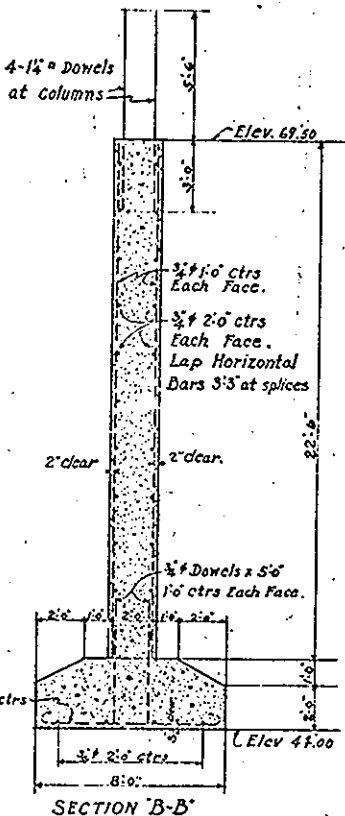
DETAIL OF COL A6 - DETAIL OF COLS B5-B6 - DETAIL OF COLS C5-C6-D5-D6 - DETAIL OF COL E6 - DETAIL OF COL F6.



DETAIL OF REFUGE BAY.



SECTION A-A



SECTION B-B

APPROVED BY

CO. COMM. _____
 CO. ENG. _____
 CO. ARCHT. _____
 DESIGN. ENG. _____

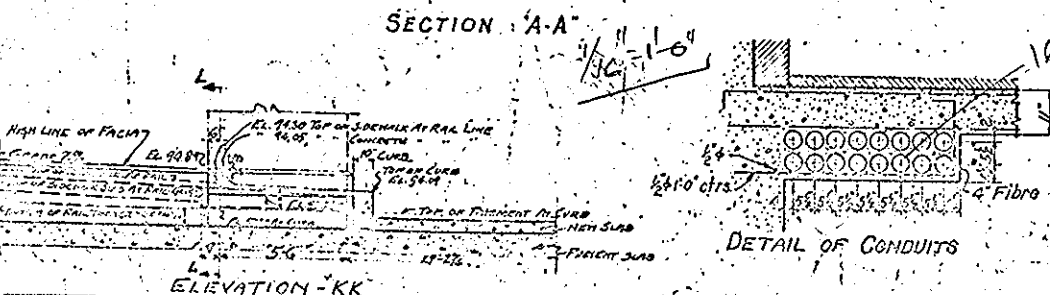
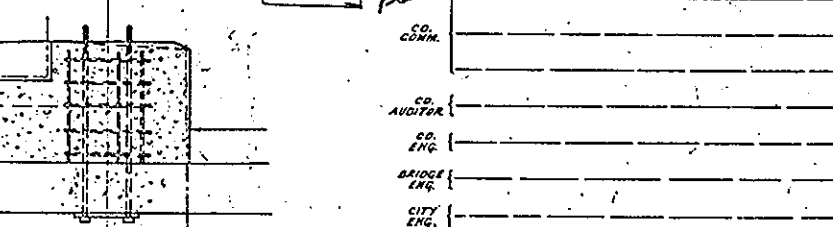
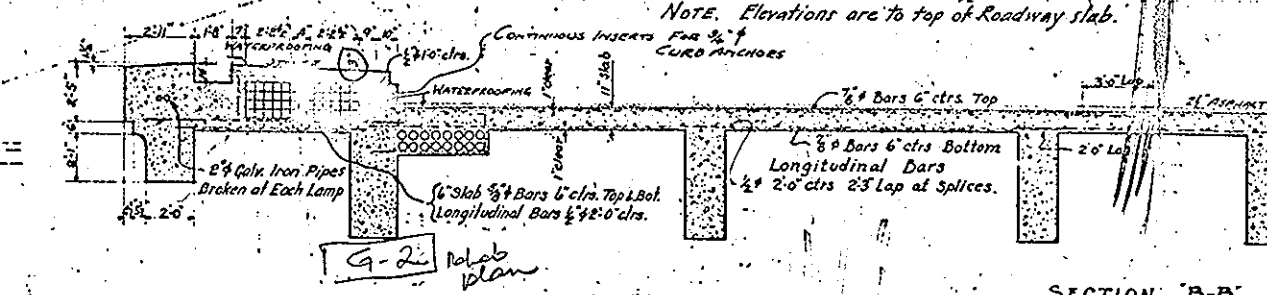
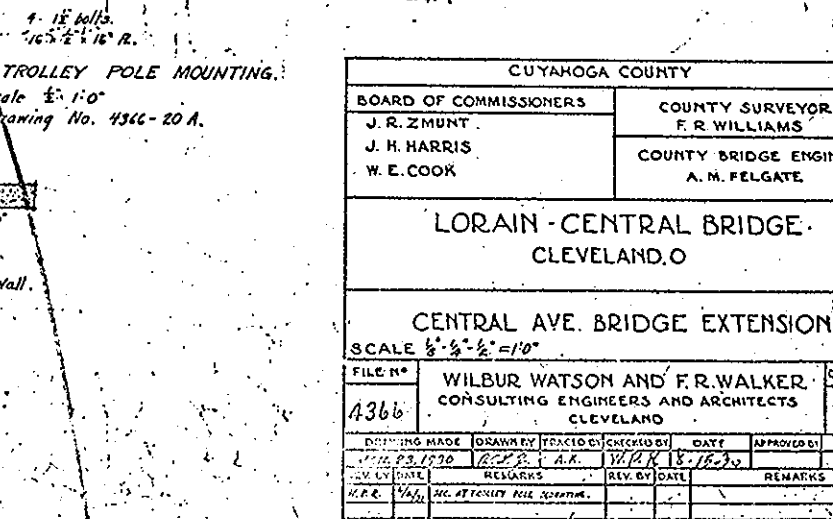
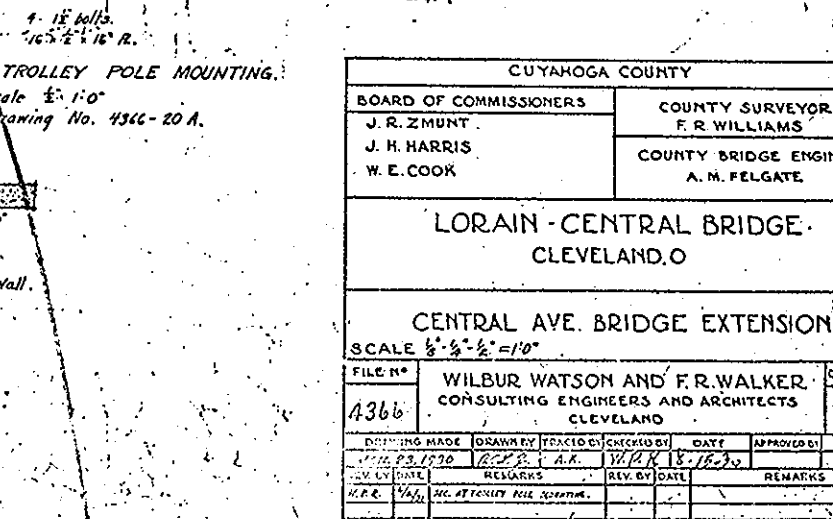
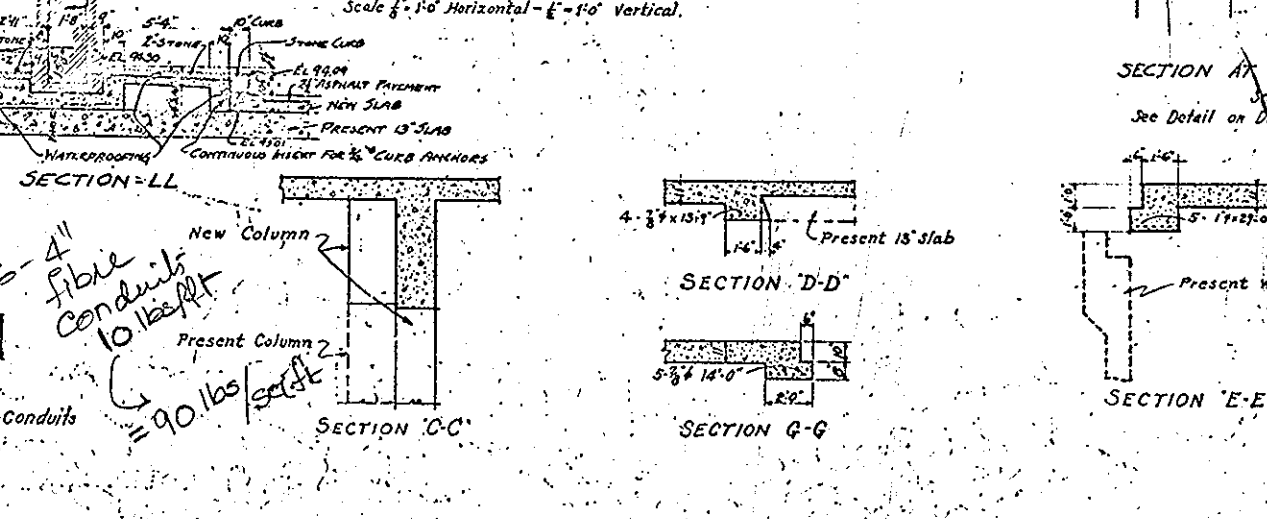
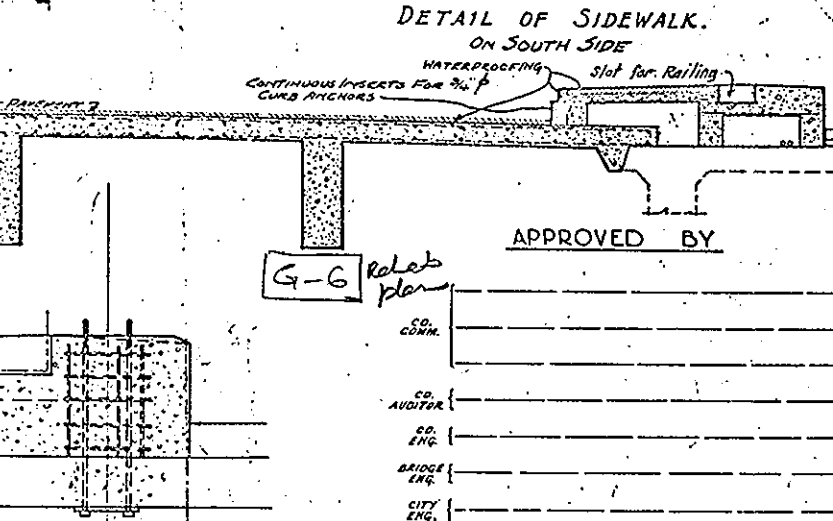
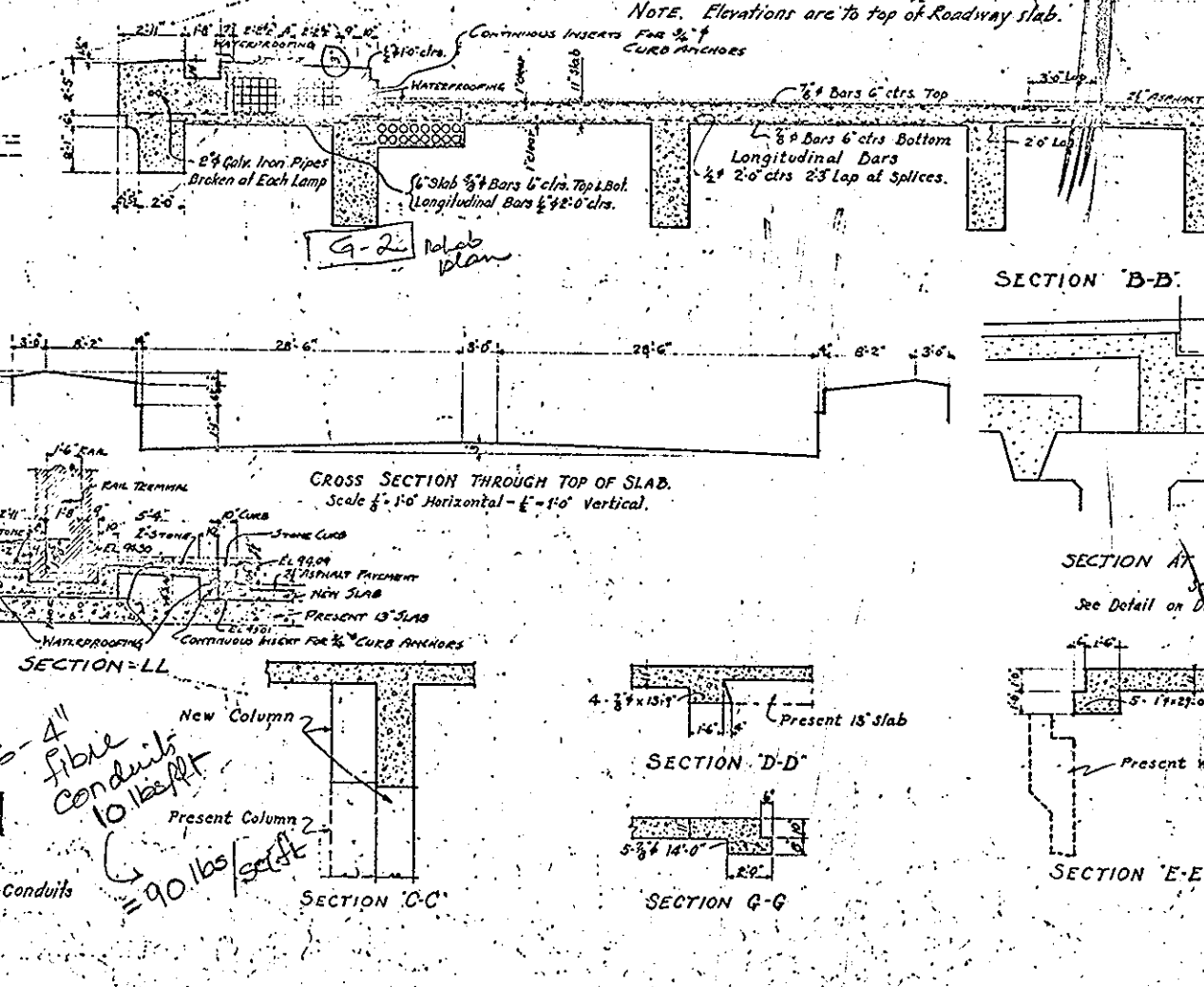
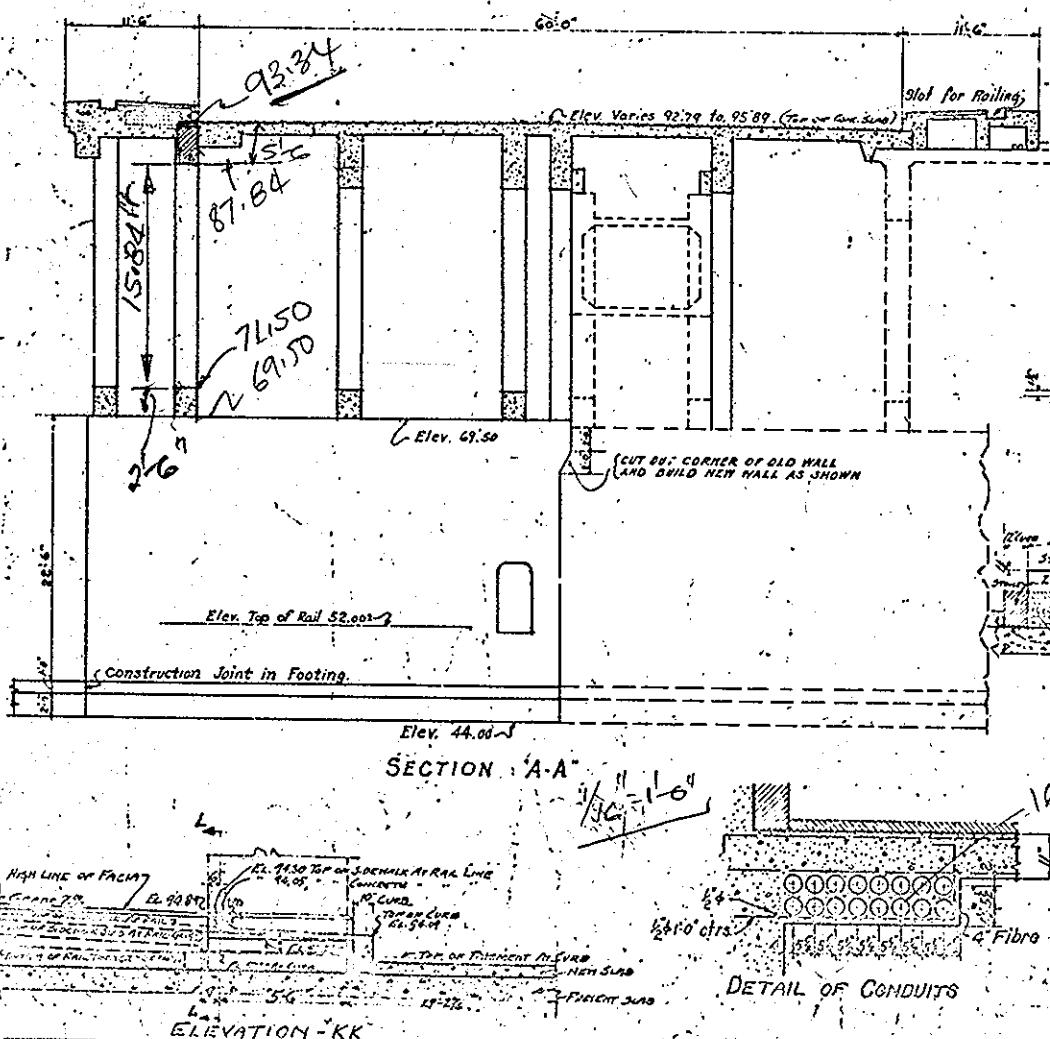
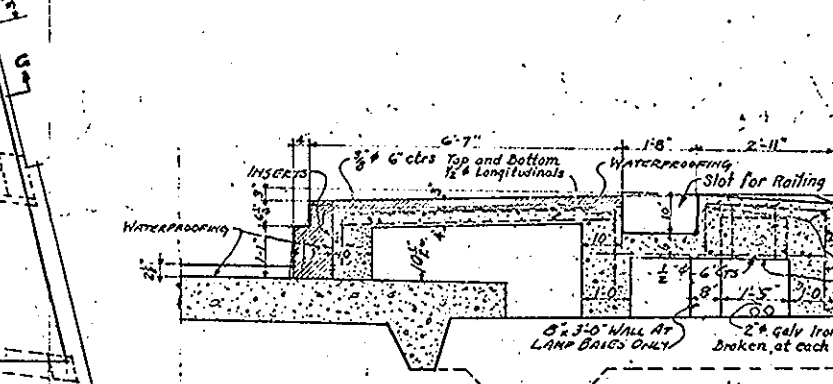
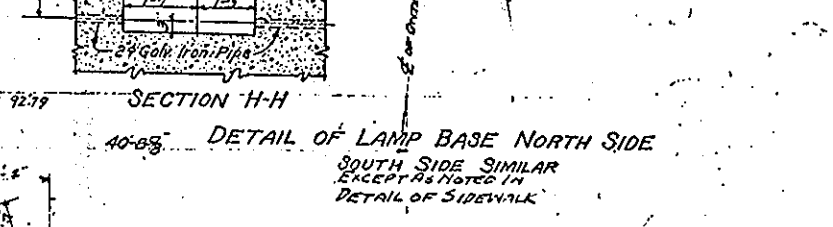
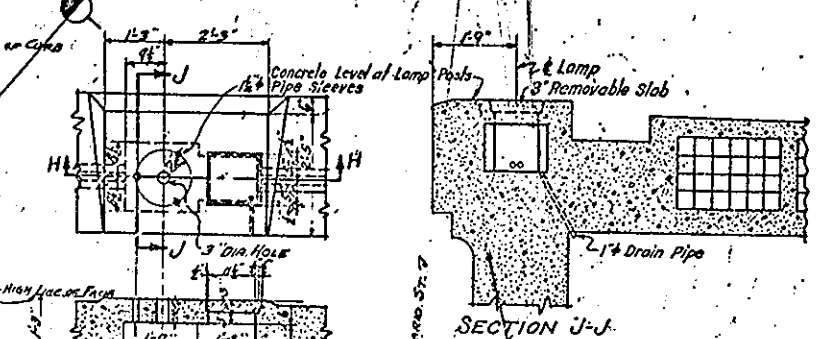
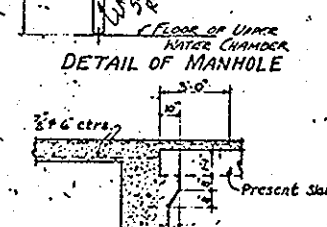
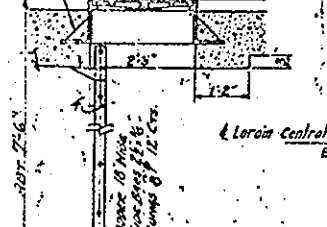
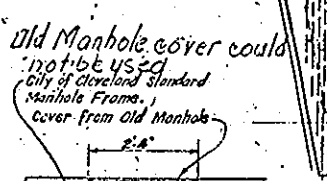
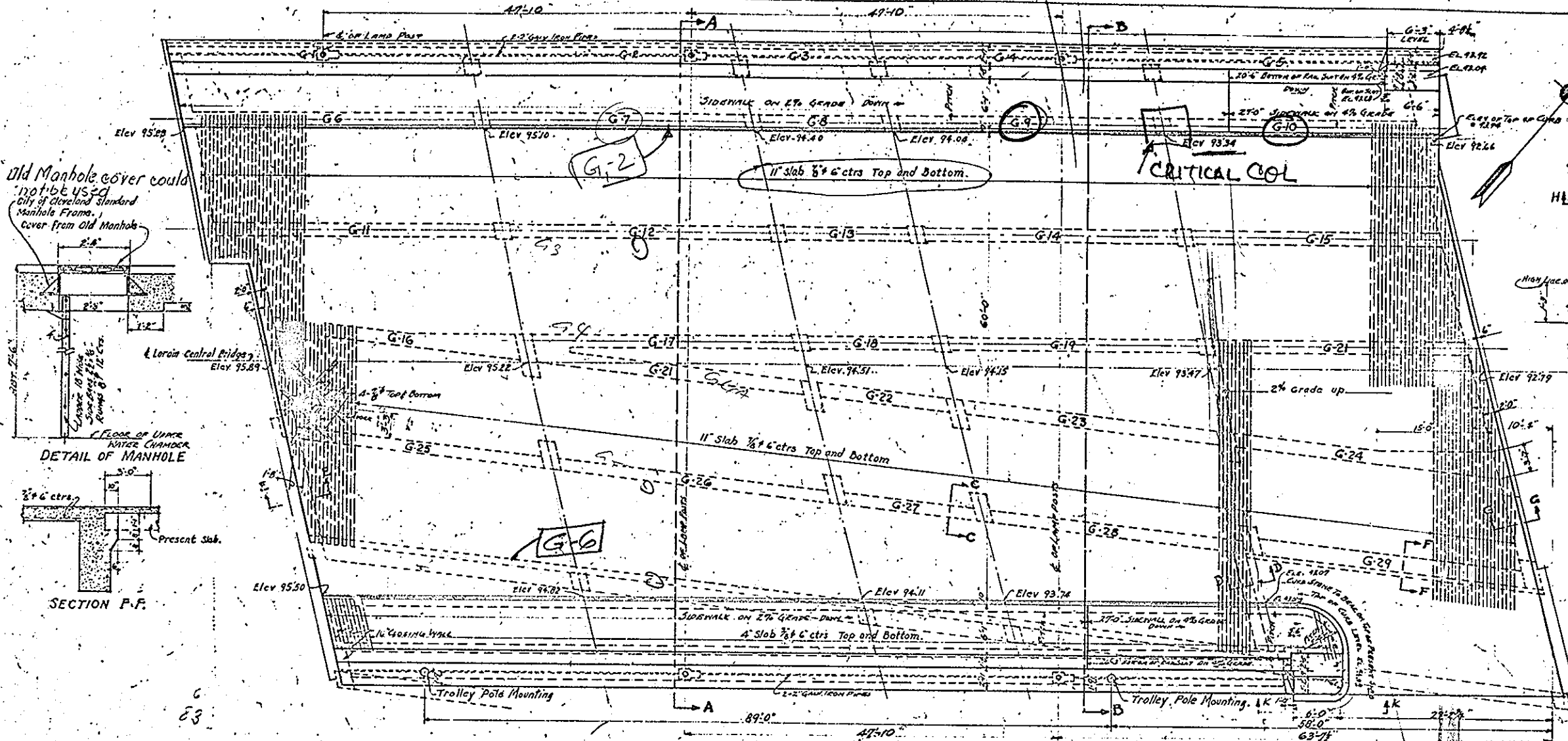
CUYAHOGA COUNTY	
BOARD OF COMMISSIONERS J. R. ZMUNT J. H. HARRIS W. E. COOK	COUNTY SURVEYOR F. R. WILLIAMS COUNTY BRIDGE ENGINEER A. M. FELGATE

LORAIN-CENTRAL BRIDGE
CLEVELAND, O.

CENTRAL AVE. BRIDGE EXTENSION
SCALE 1/8" = 1'-0"

FILE NO. 4366
 WILBUR WATSON AND F. R. WALKER
 CONSULTING ENGINEERS AND ARCHITECTS
 CLEVELAND

DRAWING MADE	DRAWN BY	TRACED BY	CHECKED BY	DATE	APPROVED	DATE
11/12/20	W.P.P.	A.M.	J.P.R.	8-15-30		
REV. NO.	REVISION	REV. BY	DATE	REMARKS		
1/1/31	End of footing on line C and struts					



APPROVED BY

CO. COMM.	____
CO. AUDITOR	____
CO. ENG.	____
BRIDGE ENG.	____
CITY ENG.	____

CUYAHOGA COUNTY

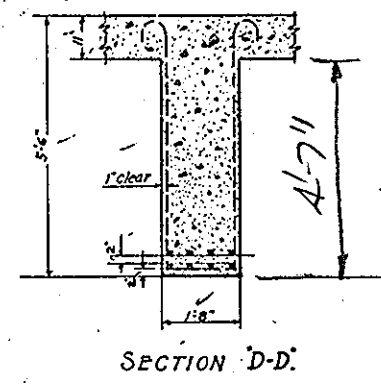
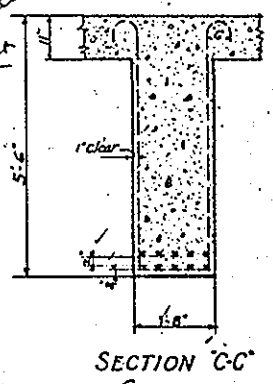
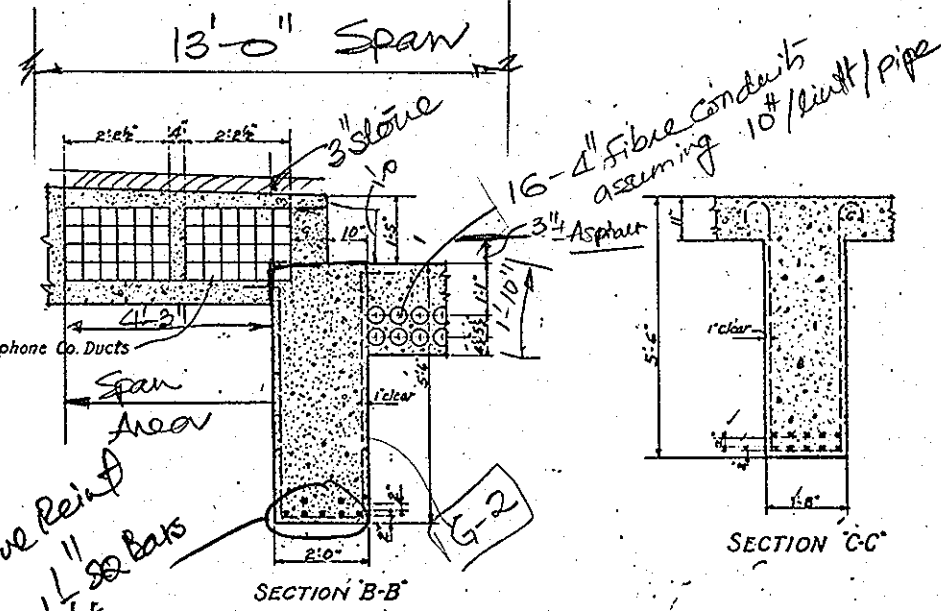
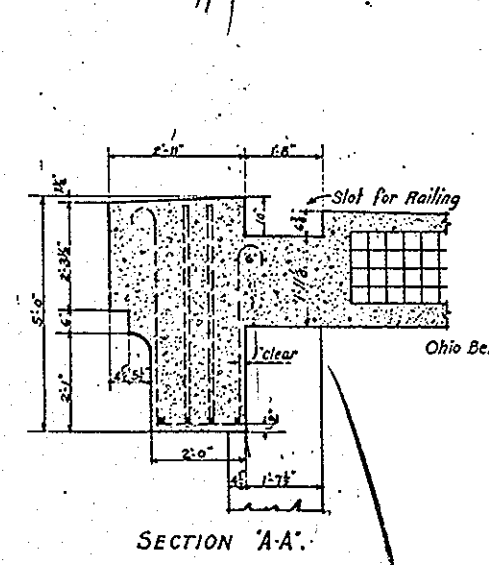
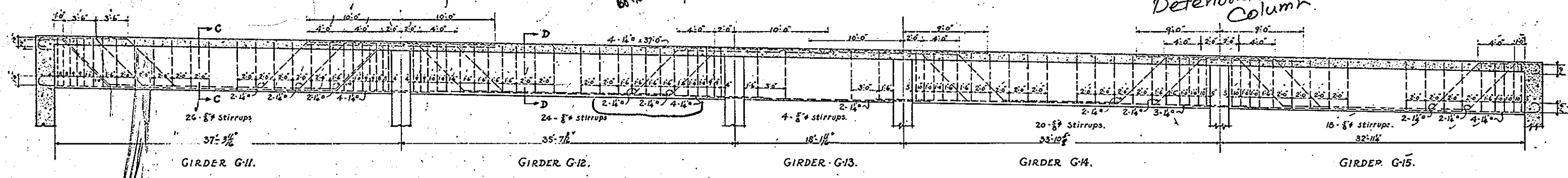
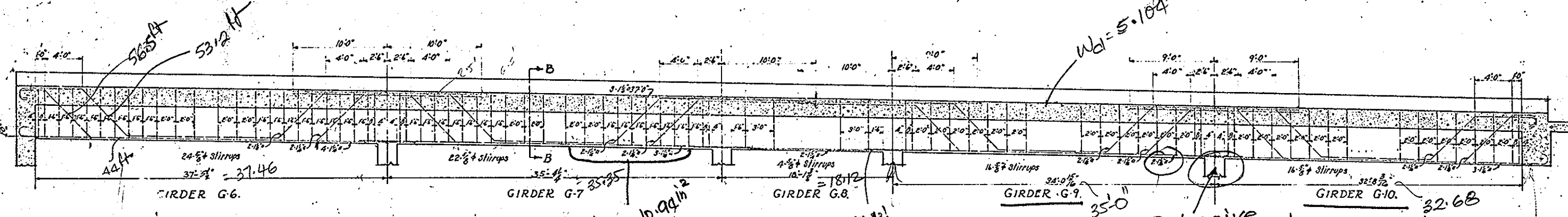
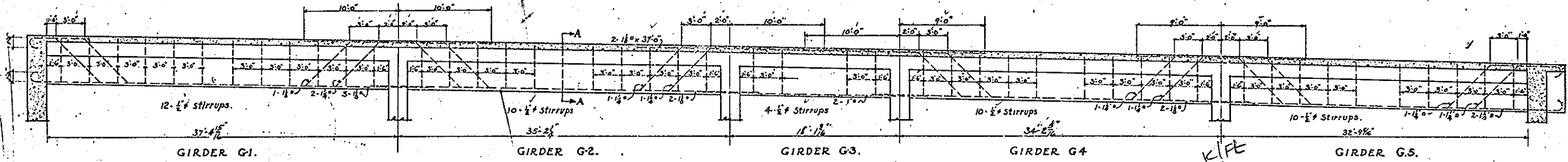
BOARD OF COMMISSIONERS J. R. ZMUNT J. H. HARRIS W. E. COOK	COUNTY SURVEYOR F. R. WILLIAMS COUNTY BRIDGE ENGINEER A. M. FELGATE
---	--

LORAIN-CENTRAL BRIDGE - CLEVELAND, O.

CENTRAL AVE. BRIDGE EXTENSION

SCALE 1/8" = 1'-0"

FILE NO. 4366	DRAWING NO. 20	DATE	APPROVED BY
DRAWING MADE BY J.W.W. (J.W.W.)			
CHECKED BY F.R.W. (F.R.W.)			
DATE 10/18/20			
REVISIONS			
No.	DATE	REVISIONS	REMARKS
1	10/18/20	REVISED	REVISED



Positive Reinft
7-1 1/4" #8 Bars
For 7 bars 10.94 sq in.
1/4" = 1'-0"
(D.I.L. = 5.104 K/FT)
4.751 K/FT

Carnegie Grade Separation Structure

APPROVED BY

CUYAHOGA COUNTY	
BOARD OF COMMISSIONERS J. R. ZMUNT J. H. HARRIS W. E. COOK	COUNTY SURVEYOR F. R. WILLIAMS COUNTY BRIDGE ENGINEER A. M. FELGATE
LORAIN - CENTRAL BRIDGE CLEVELAND, O.	
CENTRAL AVE. BRIDGE EXTENSION	
SCALE 3/16" = 1'-0"	
FILE NO. A366	DRAWING NO. 21
WILBUR WATSON AND F. R. WALKER CONSULTING ENGINEERS AND ARCHITECTS CLEVELAND	
DRAWING MADE JAN. 23, 1930	DRAWN BY W. W. A. K.
TRACED BY W. W. A. K.	CHECKED BY W. W. A. K.
DATE 1-15-30	APPROVED BY A. M. FELGATE
REV. BY DATE	REMARKS