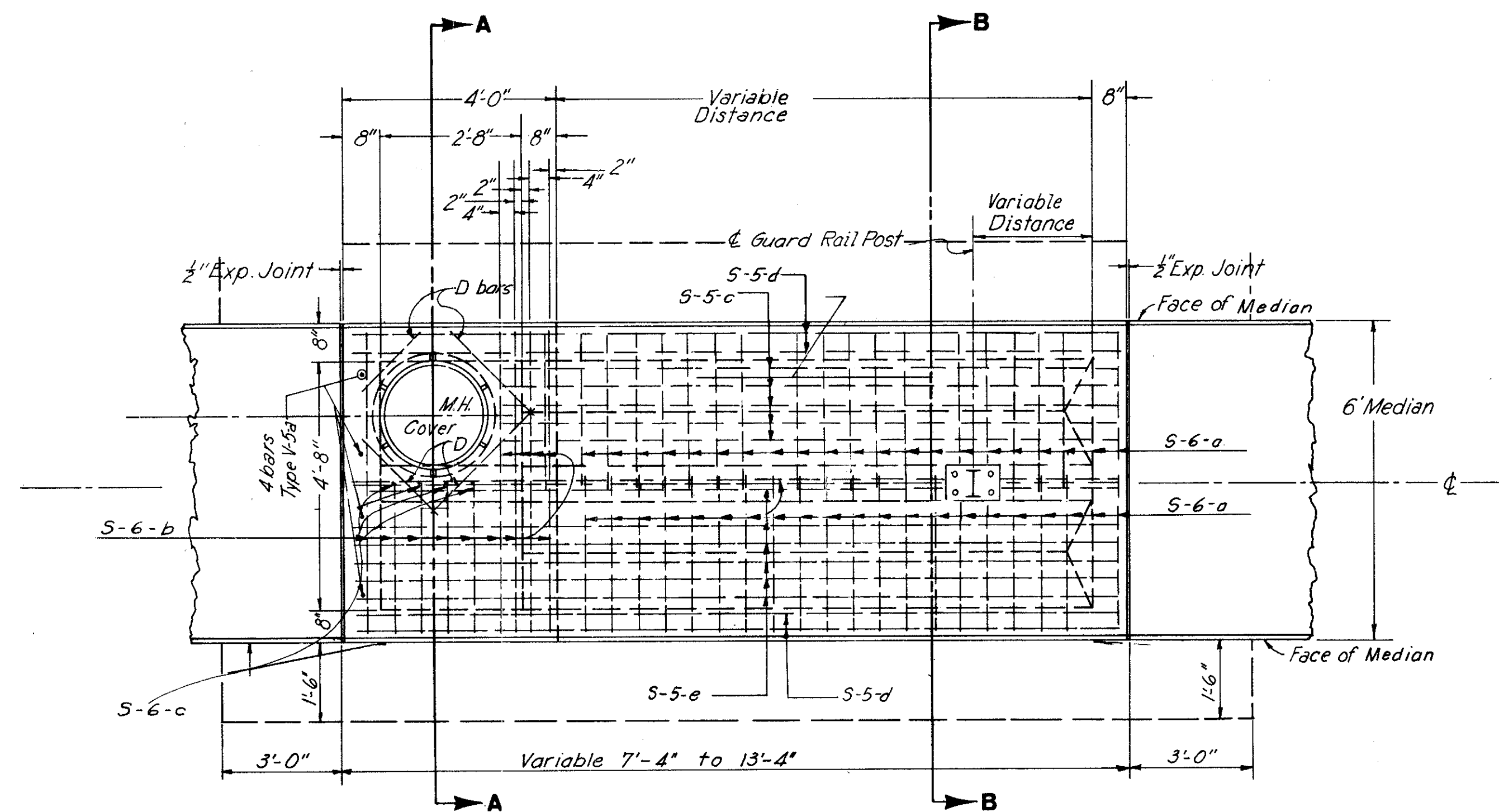
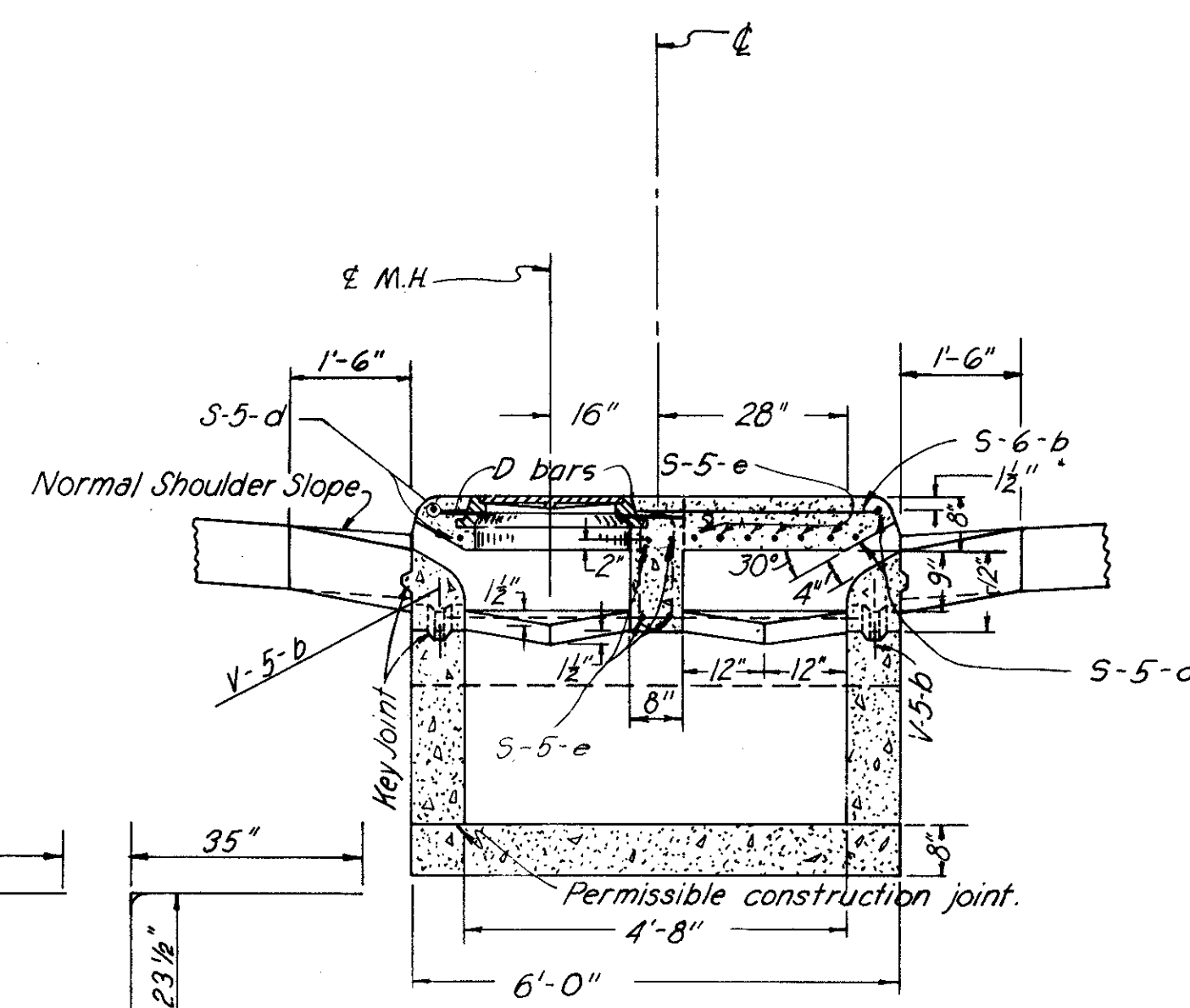


CUYAHOGA COUNTY
CITY OF CLEVELAND
MEDINA-CLARK INTERCHANGE
CUY-71-18.54
CUY-90-13.81

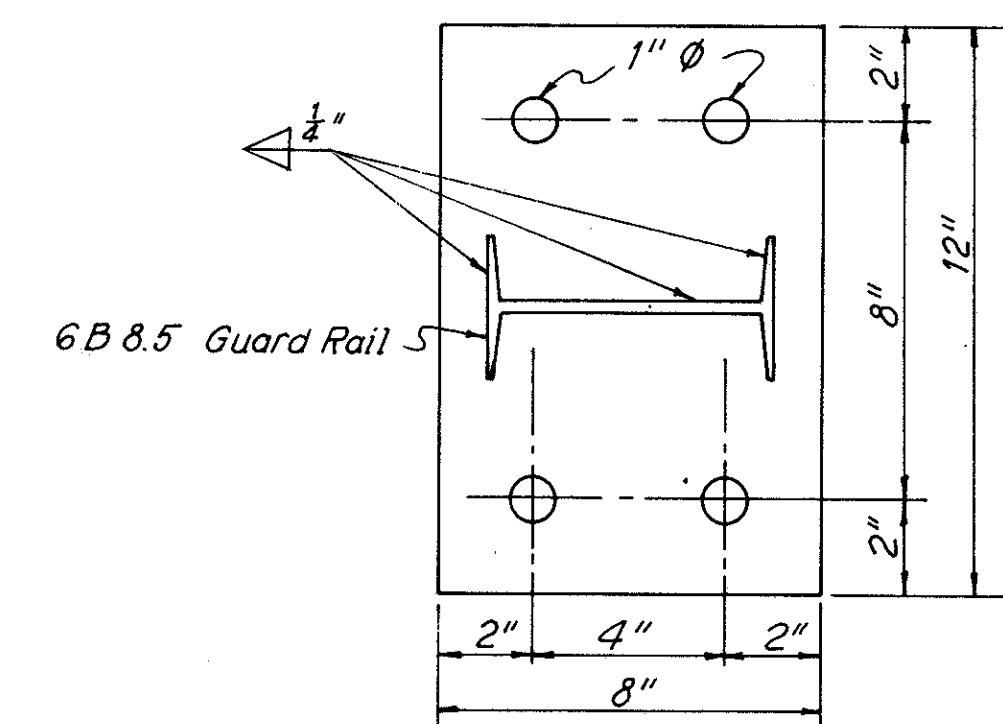
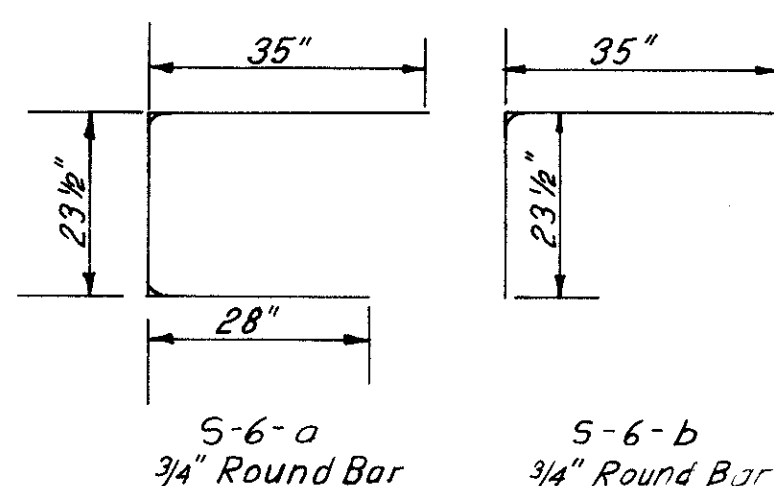


PLAN

2-A MODIFIED PAVED SHOULDER INLET

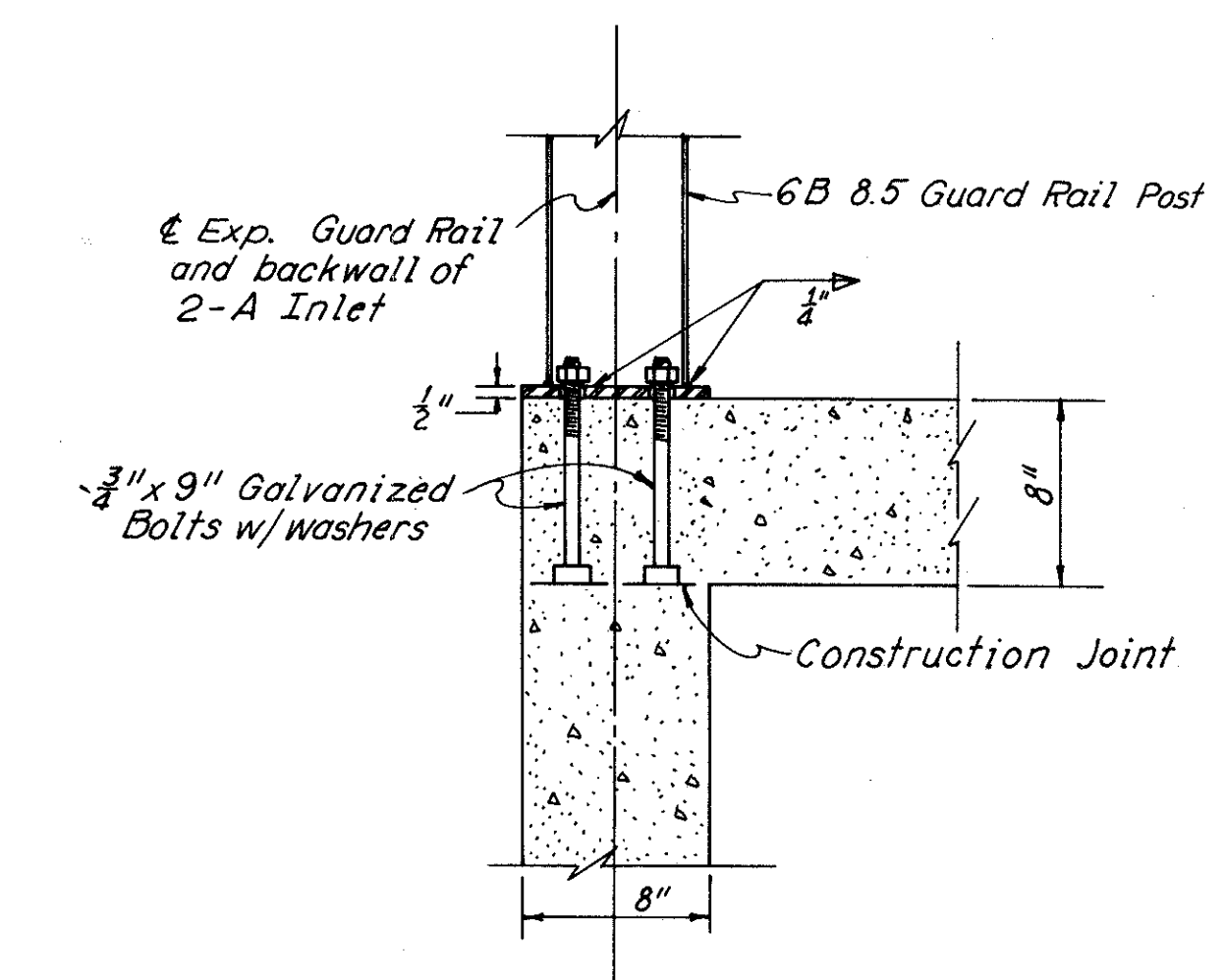


SECTION A-A



STEEL GUARDRAIL BASEPLATE

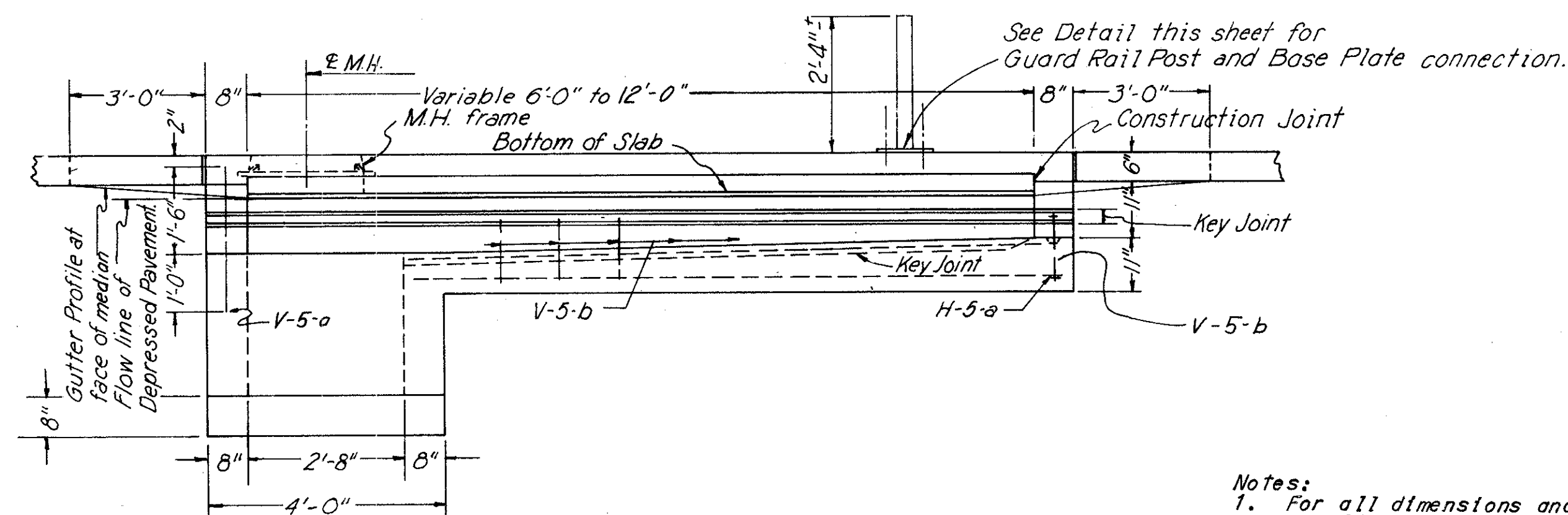
Scale 1/4"=1'-0"



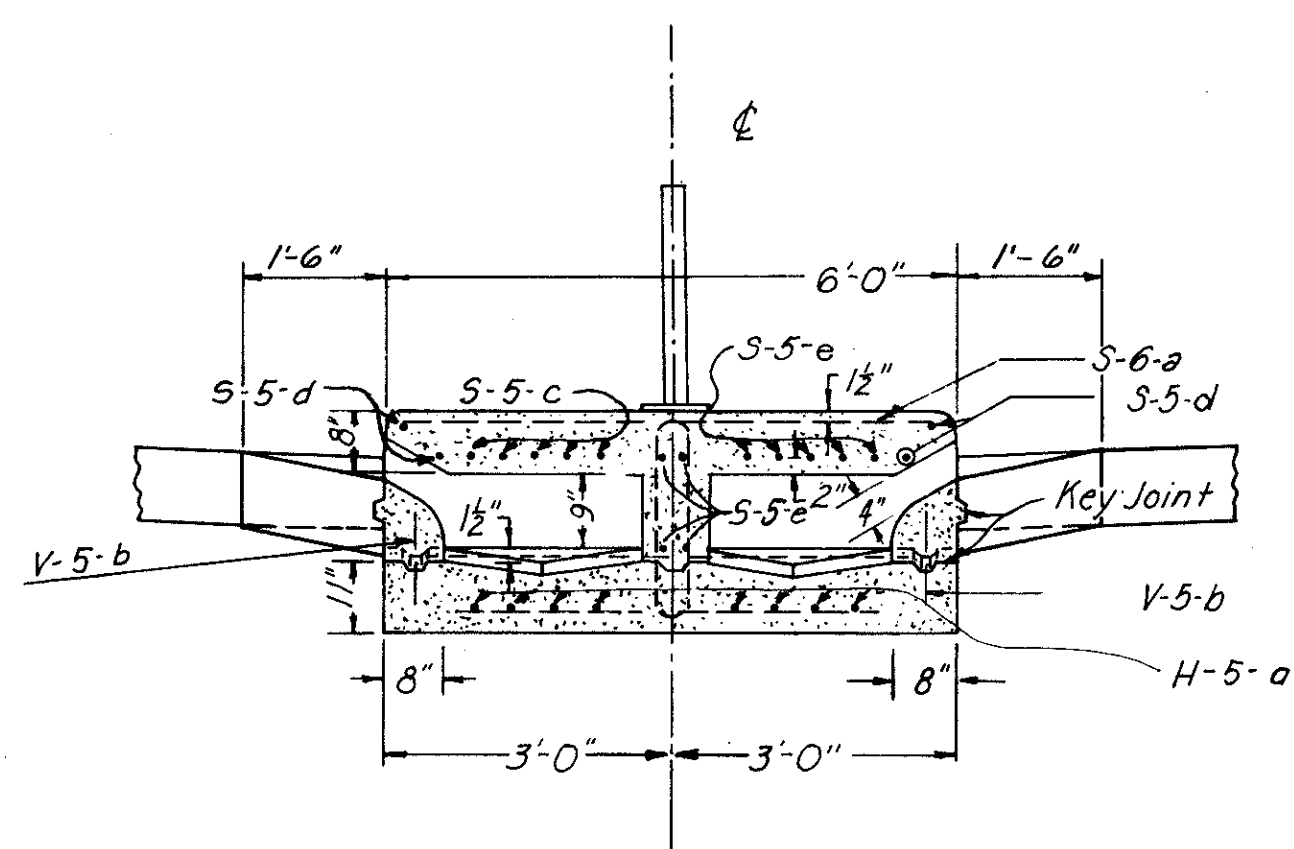
SECTION THROUGH CORNER OF 2-A

PAVED SHOULDER INLET

Scale 1/8"=1'-0"



LONGITUDINAL SECTION



SECTION B-B

- Notes:
- For all dimensions and other details not shown see Standard Construction Drawing I-8 I No. 2-A Paved Shoulder Inlets.
 - For location of Guard Rail Posts see Pavement Plans.
 - The cost of all labor and materials necessary to place the steel guardrail base plates on those inlets as noted in the plans shall be included in the unit price bid for Item I-8 2-A Paved Shoulder Inlets, as per plan.

CONCRETE AND REINFORCING STEEL QUANTITIES																			
Length Ft.	Concrete Cu. Yds.	S-6-a		S-6-b		S-6-c		S-5-c		S-5-d		S-5-e		H-5-a		V-5-a		V-5-b	
		No.	Lin. Ft.	No.	Lin. Ft.	No.	Lin. Ft.	No.	Lin. Ft.	No.	Lin. Ft.	No.	Lin. Ft.	No.	Lin. Ft.	No.	Lin. Ft.	No.	Lin. Ft.
6	3.8	10	71'-2 1/2"	14	41'-0 1/2"	4	11'-0"	5	41'-4"	4	71'-0"	9	71'-0"	8	31'-8"	4	21'-6"	17	11'-0"
8	4.6	18	71'-2 1/2"	14	41'-0 1/2"	4	11'-0"	5	61'-4"	4	91'-0"	9	91'-0"	8	51'-8"	4	21'-6"	21	11'-0"
10	5.3	26	71'-2 1/2"	14	41'-0 1/2"	4	11'-0"	5	81'-4"	4	111'-0"	9	111'-0"	8	71'-8"	4	21'-6"	25	11'-0"
12	6.1	34	71'-2 1/2"	14	41'-0 1/2"	4	11'-0"	5	101'-4"	4	131'-0"	9	131'-0"	8	91'-8"	4	21'-6"	29	11'-0"

SHOULDER INLET NO.2-A MODIFIED