



A product of the National Cooperative Soil Survey, a joint effort of the United States Department of Agriculture and other Federal agencies, State agencies including the Agricultural Experiment Stations, and local participants

Custom Soil Resource Report for Scioto County, Ohio

DA 27



Preface

Soil surveys contain information that affects land use planning in survey areas. They highlight soil limitations that affect various land uses and provide information about the properties of the soils in the survey areas. Soil surveys are designed for many different users, including farmers, ranchers, foresters, agronomists, urban planners, community officials, engineers, developers, builders, and home buyers. Also, conservationists, teachers, students, and specialists in recreation, waste disposal, and pollution control can use the surveys to help them understand, protect, or enhance the environment.

Various land use regulations of Federal, State, and local governments may impose special restrictions on land use or land treatment. Soil surveys identify soil properties that are used in making various land use or land treatment decisions. The information is intended to help the land users identify and reduce the effects of soil limitations on various land uses. The landowner or user is responsible for identifying and complying with existing laws and regulations.

Although soil survey information can be used for general farm, local, and wider area planning, onsite investigation is needed to supplement this information in some cases. Examples include soil quality assessments (<http://soils.usda.gov/sqi/>) and certain conservation and engineering applications. For more detailed information, contact your local USDA Service Center (<http://offices.sc.egov.usda.gov/locator/app?agency=nracs>) or your NRCS State Soil Scientist (http://soils.usda.gov/contact/state_offices/).

Great differences in soil properties can occur within short distances. Some soils are seasonally wet or subject to flooding. Some are too unstable to be used as a foundation for buildings or roads. Clayey or wet soils are poorly suited to use as septic tank absorption fields. A high water table makes a soil poorly suited to basements or underground installations.

The National Cooperative Soil Survey is a joint effort of the United States Department of Agriculture and other Federal agencies, State agencies including the Agricultural Experiment Stations, and local agencies. The Natural Resources Conservation Service (NRCS) has leadership for the Federal part of the National Cooperative Soil Survey.

Information about soils is updated periodically. Updated information is available through the NRCS Soil Data Mart Web site or the NRCS Web Soil Survey. The Soil Data Mart is the data storage site for the official soil survey information.

The U.S. Department of Agriculture (USDA) prohibits discrimination in all its programs and activities on the basis of race, color, national origin, age, disability, and where applicable, sex, marital status, familial status, parental status, religion, sexual orientation, genetic information, political beliefs, reprisal, or because all or a part of an individual's income is derived from any public assistance program. (Not all prohibited bases apply to all programs.) Persons with disabilities who require alternative means

for communication of program information (Braille, large print, audiotape, etc.) should contact USDA's TARGET Center at (202) 720-2600 (voice and TDD). To file a complaint of discrimination, write to USDA, Director, Office of Civil Rights, 1400 Independence Avenue, S.W., Washington, D.C. 20250-9410 or call (800) 795-3272 (voice) or (202) 720-6382 (TDD). USDA is an equal opportunity provider and employer.

Contents

Preface	2
How Soil Surveys Are Made	5
Soil Map	7
Soil Map.....	8
Legend.....	9
Map Unit Legend.....	10
Map Unit Descriptions.....	10
Scioto County, Ohio.....	12
ErD—Ernest silt loam, 15 to 25 percent slopes.....	12
MoC2—Monongahela silt loam, 8 to 15 percent slopes, eroded.....	13
OmB—Omulga silt loam, 1 to 8 percent slopes.....	14
SbD—Shelocta silt loam, 15 to 25 percent slopes.....	15
SfE—Shelocta-Wharton-Latham association, steep.....	16
TcB—Tilsit-Coolville association, undulating.....	18
Soil Information for All Uses	20
Soil Properties and Qualities.....	20
Soil Qualities and Features.....	20
Hydrologic Soil Group (DA 27).....	20
References	25

How Soil Surveys Are Made

Soil surveys are made to provide information about the soils and miscellaneous areas in a specific area. They include a description of the soils and miscellaneous areas and their location on the landscape and tables that show soil properties and limitations affecting various uses. Soil scientists observed the steepness, length, and shape of the slopes; the general pattern of drainage; the kinds of crops and native plants; and the kinds of bedrock. They observed and described many soil profiles. A soil profile is the sequence of natural layers, or horizons, in a soil. The profile extends from the surface down into the unconsolidated material in which the soil formed or from the surface down to bedrock. The unconsolidated material is devoid of roots and other living organisms and has not been changed by other biological activity.

Currently, soils are mapped according to the boundaries of major land resource areas (MLRAs). MLRAs are geographically associated land resource units that share common characteristics related to physiography, geology, climate, water resources, soils, biological resources, and land uses (USDA, 2006). Soil survey areas typically consist of parts of one or more MLRA.

The soils and miscellaneous areas in a survey area occur in an orderly pattern that is related to the geology, landforms, relief, climate, and natural vegetation of the area. Each kind of soil and miscellaneous area is associated with a particular kind of landform or with a segment of the landform. By observing the soils and miscellaneous areas in the survey area and relating their position to specific segments of the landform, a soil scientist develops a concept, or model, of how they were formed. Thus, during mapping, this model enables the soil scientist to predict with a considerable degree of accuracy the kind of soil or miscellaneous area at a specific location on the landscape.

Commonly, individual soils on the landscape merge into one another as their characteristics gradually change. To construct an accurate soil map, however, soil scientists must determine the boundaries between the soils. They can observe only a limited number of soil profiles. Nevertheless, these observations, supplemented by an understanding of the soil-vegetation-landscape relationship, are sufficient to verify predictions of the kinds of soil in an area and to determine the boundaries.

Soil scientists recorded the characteristics of the soil profiles that they studied. They noted soil color, texture, size and shape of soil aggregates, kind and amount of rock fragments, distribution of plant roots, reaction, and other features that enable them to identify soils. After describing the soils in the survey area and determining their properties, the soil scientists assigned the soils to taxonomic classes (units). Taxonomic classes are concepts. Each taxonomic class has a set of soil characteristics with precisely defined limits. The classes are used as a basis for comparison to classify soils systematically. Soil taxonomy, the system of taxonomic classification used in the United States, is based mainly on the kind and character of soil properties and the arrangement of horizons within the profile. After the soil scientists classified and named the soils in the survey area, they compared the

Custom Soil Resource Report

individual soils with similar soils in the same taxonomic class in other areas so that they could confirm data and assemble additional data based on experience and research.

The objective of soil mapping is not to delineate pure map unit components; the objective is to separate the landscape into landforms or landform segments that have similar use and management requirements. Each map unit is defined by a unique combination of soil components and/or miscellaneous areas in predictable proportions. Some components may be highly contrasting to the other components of the map unit. The presence of minor components in a map unit in no way diminishes the usefulness or accuracy of the data. The delineation of such landforms and landform segments on the map provides sufficient information for the development of resource plans. If intensive use of small areas is planned, onsite investigation is needed to define and locate the soils and miscellaneous areas.

Soil scientists make many field observations in the process of producing a soil map. The frequency of observation is dependent upon several factors, including scale of mapping, intensity of mapping, design of map units, complexity of the landscape, and experience of the soil scientist. Observations are made to test and refine the soil-landscape model and predictions and to verify the classification of the soils at specific locations. Once the soil-landscape model is refined, a significantly smaller number of measurements of individual soil properties are made and recorded. These measurements may include field measurements, such as those for color, depth to bedrock, and texture, and laboratory measurements, such as those for content of sand, silt, clay, salt, and other components. Properties of each soil typically vary from one point to another across the landscape.

Observations for map unit components are aggregated to develop ranges of characteristics for the components. The aggregated values are presented. Direct measurements do not exist for every property presented for every map unit component. Values for some properties are estimated from combinations of other properties.

While a soil survey is in progress, samples of some of the soils in the area generally are collected for laboratory analyses and for engineering tests. Soil scientists interpret the data from these analyses and tests as well as the field-observed characteristics and the soil properties to determine the expected behavior of the soils under different uses. Interpretations for all of the soils are field tested through observation of the soils in different uses and under different levels of management. Some interpretations are modified to fit local conditions, and some new interpretations are developed to meet local needs. Data are assembled from other sources, such as research information, production records, and field experience of specialists. For example, data on crop yields under defined levels of management are assembled from farm records and from field or plot experiments on the same kinds of soil.

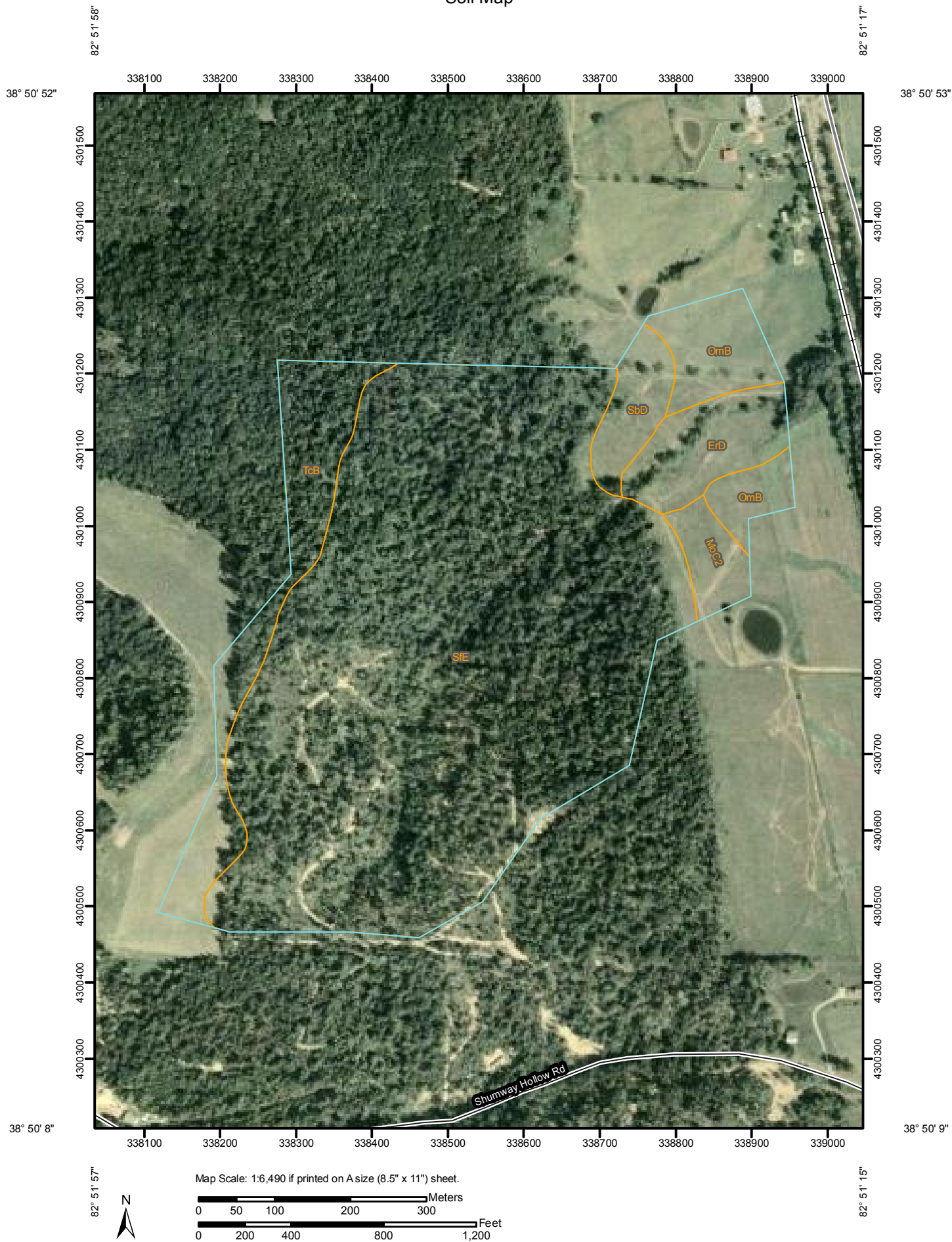
Predictions about soil behavior are based not only on soil properties but also on such variables as climate and biological activity. Soil conditions are predictable over long periods of time, but they are not predictable from year to year. For example, soil scientists can predict with a fairly high degree of accuracy that a given soil will have a high water table within certain depths in most years, but they cannot predict that a high water table will always be at a specific level in the soil on a specific date.

After soil scientists located and identified the significant natural bodies of soil in the survey area, they drew the boundaries of these bodies on aerial photographs and identified each as a specific map unit. Aerial photographs show trees, buildings, fields, roads, and rivers, all of which help in locating boundaries accurately.

Soil Map

The soil map section includes the soil map for the defined area of interest, a list of soil map units on the map and extent of each map unit, and cartographic symbols displayed on the map. Also presented are various metadata about data used to produce the map, and a description of each soil map unit.

Custom Soil Resource Report Soil Map



Map Scale: 1:6,490 if printed on A size (8.5" x 11") sheet.


0 50 100 200 300 Meters

0 200 400 800 1,200 Feet

Custom Soil Resource Report

MAP LEGEND

Area of Interest (AOI)




 Area of Interest (AOI)

Soils




 Soil Map Units

Special Point Features

-  Blowout
-  Borrow Pit
-  Clay Spot
-  Closed Depression
-  Gravel Pit
-  Gravelly Spot
-  Landfill
-  Lava Flow
-  Marsh or swamp
-  Mine or Quarry
-  Miscellaneous Water
-  Perennial Water
-  Rock Outcrop
-  Saline Spot
-  Sandy Spot
-  Severely Eroded Spot
-  Sinkhole
-  Slide or Slip
-  Sodic Spot
-  Spoil Area
-  Stony Spot

-  Very Stony Spot
-  Wet Spot
-  Other

Special Line Features

-  Gully
-  Short Steep Slope
-  Other

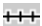




Political Features

-  Cities

Water Features

-  Streams and Canals

Transportation

-  Rails
-  Interstate Highways
-  US Routes
-  Major Roads
-  Local Roads

MAP INFORMATION

Map Scale: 1:6,490 if printed on A size (8.5" x 11") sheet.

The soil surveys that comprise your AOI were mapped at 1:15,840.

Warning: Soil Map may not be valid at this scale.

Enlargement of maps beyond the scale of mapping can cause misunderstanding of the detail of mapping and accuracy of soil line placement. The maps do not show the small areas of contrasting soils that could have been shown at a more detailed scale.

Please rely on the bar scale on each map sheet for accurate map measurements.

Source of Map: Natural Resources Conservation Service
 Web Soil Survey URL: <http://websoilsurvey.nrcs.usda.gov>
 Coordinate System: UTM Zone 17N NAD83

This product is generated from the USDA-NRCS certified data as of the version date(s) listed below.

Soil Survey Area: Scioto County, Ohio
 Survey Area Data: Version 10, Jan 12, 2009

Date(s) aerial images were photographed: 9/1/2004

The orthophoto or other base map on which the soil lines were compiled and digitized probably differs from the background imagery displayed on these maps. As a result, some minor shifting of map unit boundaries may be evident.

Map Unit Legend

Scioto County, Ohio (OH145)			
Map Unit Symbol	Map Unit Name	Acres in AOI	Percent of AOI
ErD	Ernest silt loam, 15 to 25 percent slopes	5.5	5.1%
MoC2	Monongahela silt loam, 8 to 15 percent slopes, eroded	2.5	2.3%
OmB	Omulga silt loam, 1 to 8 percent slopes	6.3	5.9%
SbD	Shelocta silt loam, 15 to 25 percent slopes	3.3	3.1%
SfE	Shelocta-Wharton-Latham association, steep	79.5	74.2%
TcB	Tilsit-Coolville association, undulating	10.0	9.3%
Totals for Area of Interest		107.1	100.0%

Map Unit Descriptions

The map units delineated on the detailed soil maps in a soil survey represent the soils or miscellaneous areas in the survey area. The map unit descriptions, along with the maps, can be used to determine the composition and properties of a unit.

A map unit delineation on a soil map represents an area dominated by one or more major kinds of soil or miscellaneous areas. A map unit is identified and named according to the taxonomic classification of the dominant soils. Within a taxonomic class there are precisely defined limits for the properties of the soils. On the landscape, however, the soils are natural phenomena, and they have the characteristic variability of all natural phenomena. Thus, the range of some observed properties may extend beyond the limits defined for a taxonomic class. Areas of soils of a single taxonomic class rarely, if ever, can be mapped without including areas of other taxonomic classes. Consequently, every map unit is made up of the soils or miscellaneous areas for which it is named and some minor components that belong to taxonomic classes other than those of the major soils.

Most minor soils have properties similar to those of the dominant soil or soils in the map unit, and thus they do not affect use and management. These are called noncontrasting, or similar, components. They may or may not be mentioned in a particular map unit description. Other minor components, however, have properties and behavioral characteristics divergent enough to affect use or to require different management. These are called contrasting, or dissimilar, components. They generally are in small areas and could not be mapped separately because of the scale used. Some small areas of strongly contrasting soils or miscellaneous areas are identified by a special symbol on the maps. If included in the database for a given area, the contrasting minor components are identified in the map unit descriptions along with some characteristics of each. A few areas of minor components may not have been observed, and consequently they are not mentioned in the descriptions, especially where the pattern was so complex that it was impractical to make enough observations to identify all the soils and miscellaneous areas on the landscape.

The presence of minor components in a map unit in no way diminishes the usefulness or accuracy of the data. The objective of mapping is not to delineate pure taxonomic

Custom Soil Resource Report

classes but rather to separate the landscape into landforms or landform segments that have similar use and management requirements. The delineation of such segments on the map provides sufficient information for the development of resource plans. If intensive use of small areas is planned, however, onsite investigation is needed to define and locate the soils and miscellaneous areas.

An identifying symbol precedes the map unit name in the map unit descriptions. Each description includes general facts about the unit and gives important soil properties and qualities.

Soils that have profiles that are almost alike make up a *soil series*. Except for differences in texture of the surface layer, all the soils of a series have major horizons that are similar in composition, thickness, and arrangement.

Soils of one series can differ in texture of the surface layer, slope, stoniness, salinity, degree of erosion, and other characteristics that affect their use. On the basis of such differences, a soil series is divided into *soil phases*. Most of the areas shown on the detailed soil maps are phases of soil series. The name of a soil phase commonly indicates a feature that affects use or management. For example, Alpha silt loam, 0 to 2 percent slopes, is a phase of the Alpha series.

Some map units are made up of two or more major soils or miscellaneous areas. These map units are complexes, associations, or undifferentiated groups.

A *complex* consists of two or more soils or miscellaneous areas in such an intricate pattern or in such small areas that they cannot be shown separately on the maps. The pattern and proportion of the soils or miscellaneous areas are somewhat similar in all areas. Alpha-Beta complex, 0 to 6 percent slopes, is an example.

An *association* is made up of two or more geographically associated soils or miscellaneous areas that are shown as one unit on the maps. Because of present or anticipated uses of the map units in the survey area, it was not considered practical or necessary to map the soils or miscellaneous areas separately. The pattern and relative proportion of the soils or miscellaneous areas are somewhat similar. Alpha-Beta association, 0 to 2 percent slopes, is an example.

An *undifferentiated group* is made up of two or more soils or miscellaneous areas that could be mapped individually but are mapped as one unit because similar interpretations can be made for use and management. The pattern and proportion of the soils or miscellaneous areas in a mapped area are not uniform. An area can be made up of only one of the major soils or miscellaneous areas, or it can be made up of all of them. Alpha and Beta soils, 0 to 2 percent slopes, is an example.

Some surveys include *miscellaneous areas*. Such areas have little or no soil material and support little or no vegetation. Rock outcrop is an example.

Scioto County, Ohio

ErD—Ernest silt loam, 15 to 25 percent slopes

Map Unit Setting

Mean annual precipitation: 37 to 45 inches

Mean annual air temperature: 50 to 55 degrees F

Frost-free period: 160 to 180 days

Map Unit Composition

Ernest and similar soils: 85 percent

Minor components: 15 percent

Description of Ernest

Setting

Landform: Hills

Landform position (two-dimensional): Footslope

Landform position (three-dimensional): Side slope

Down-slope shape: Convex

Across-slope shape: Linear

Parent material: Colluvium

Properties and qualities

Slope: 15 to 25 percent

Depth to restrictive feature: 22 to 28 inches to fragipan

Drainage class: Moderately well drained

Capacity of the most limiting layer to transmit water (Ksat): Moderately low to moderately high (0.06 to 0.60 in/hr)

Depth to water table: About 18 to 36 inches

Frequency of flooding: None

Frequency of ponding: None

Available water capacity: Low (about 3.5 inches)

Interpretive groups

Land capability (nonirrigated): 4e

Typical profile

0 to 5 inches: Silt loam

5 to 24 inches: Silt loam

24 to 60 inches: Channery loam

Minor Components

Omulga

Percent of map unit: 10 percent

Landform: Terraces

Monongahela

Percent of map unit: 5 percent

Landform: Terraces

MoC2—Monongahela silt loam, 8 to 15 percent slopes, eroded

Map Unit Setting

Mean annual precipitation: 37 to 45 inches
Mean annual air temperature: 50 to 55 degrees F
Frost-free period: 160 to 180 days

Map Unit Composition

Monongahela and similar soils: 95 percent
Minor components: 5 percent

Description of Monongahela

Setting

Landform: Terraces
Landform position (two-dimensional): Summit
Landform position (three-dimensional): Tread
Down-slope shape: Convex
Across-slope shape: Linear
Parent material: Alluvium

Properties and qualities

Slope: 8 to 15 percent
Depth to restrictive feature: 18 to 30 inches to fragipan
Drainage class: Moderately well drained
Capacity of the most limiting layer to transmit water (Ksat): Moderately low to moderately high (0.06 to 0.60 in/hr)
Depth to water table: About 18 to 36 inches
Frequency of flooding: None
Frequency of ponding: None
Available water capacity: Low (about 3.2 inches)

Interpretive groups

Land capability (nonirrigated): 3e

Typical profile

0 to 6 inches: Silt loam
6 to 18 inches: Silt loam
18 to 57 inches: Loam
57 to 70 inches: Silt loam

Minor Components

Haymond

Percent of map unit: 2 percent
Landform: Flood plains

Ernest

Percent of map unit: 2 percent
Landform: Hills

Wyatt

Percent of map unit: 1 percent
Landform: Terraces

OmB—Omulga silt loam, 1 to 8 percent slopes

Map Unit Setting

Mean annual precipitation: 37 to 45 inches
Mean annual air temperature: 50 to 55 degrees F
Frost-free period: 160 to 180 days

Map Unit Composition

Omulga and similar soils: 95 percent
Minor components: 5 percent

Description of Omulga

Setting

Landform: Terraces
Landform position (two-dimensional): Summit
Landform position (three-dimensional): Tread
Down-slope shape: Convex
Across-slope shape: Linear
Parent material: Loess over alluvium over lacustrine deposits

Properties and qualities

Slope: 1 to 8 percent
Depth to restrictive feature: 18 to 36 inches to fragipan
Drainage class: Moderately well drained
Capacity of the most limiting layer to transmit water (Ksat): Moderately low to moderately high (0.06 to 0.20 in/hr)
Depth to water table: About 24 to 42 inches
Frequency of flooding: None
Frequency of ponding: None
Available water capacity: Moderate (about 6.3 inches)

Interpretive groups

Land capability (nonirrigated): 2e

Typical profile

0 to 10 inches: Silt loam
10 to 30 inches: Silty clay loam
30 to 43 inches: Silty clay loam
43 to 50 inches: Silty clay loam
50 to 85 inches: Stratified sandy loam to clay

Minor Components

Wyatt

Percent of map unit: 2 percent
Landform: Terraces

Doles

Percent of map unit: 2 percent
Landform: Terraces

Well drained, moderately deep soils

Percent of map unit: 1 percent

SbD—Shelocta silt loam, 15 to 25 percent slopes

Map Unit Setting

Elevation: 550 to 3,500 feet
Mean annual precipitation: 37 to 54 inches
Mean annual air temperature: 48 to 59 degrees F
Frost-free period: 160 to 185 days

Map Unit Composition

Shelocta and similar soils: 85 percent
Minor components: 15 percent

Description of Shelocta

Setting

Landform: Hills
Landform position (two-dimensional): Backslope
Landform position (three-dimensional): Side slope
Down-slope shape: Convex
Across-slope shape: Linear
Parent material: Colluvium over residuum

Properties and qualities

Slope: 15 to 25 percent
Depth to restrictive feature: 48 to 100 inches to lithic bedrock
Drainage class: Well drained
Capacity of the most limiting layer to transmit water (Ksat): Moderately high to high
(0.60 to 2.00 in/hr)
Depth to water table: More than 80 inches
Frequency of flooding: None
Frequency of ponding: None
Available water capacity: High (about 9.3 inches)

Interpretive groups

Land capability (nonirrigated): 4e

Typical profile

0 to 9 inches: Silt loam
9 to 60 inches: Very channery silt loam

Minor Components

Brownsville

Percent of map unit: 15 percent

Landform: Hills

SfE—Shelocta-Wharton-Latham association, steep

Map Unit Setting

Elevation: 550 to 3,500 feet

Mean annual precipitation: 35 to 54 inches

Mean annual air temperature: 48 to 59 degrees F

Frost-free period: 155 to 195 days

Map Unit Composition

Shelocta and similar soils: 45 percent

Wharton and similar soils: 30 percent

Latham and similar soils: 10 percent

Minor components: 15 percent

Description of Shelocta

Setting

Landform: Hills

Landform position (two-dimensional): Backslope

Landform position (three-dimensional): Side slope

Down-slope shape: Convex

Across-slope shape: Linear

Parent material: Colluvium over residuum

Properties and qualities

Slope: 25 to 40 percent

Depth to restrictive feature: 48 to 100 inches to lithic bedrock

Drainage class: Well drained

*Capacity of the most limiting layer to transmit water (Ksat): Moderately high to high
(0.60 to 2.00 in/hr)*

Depth to water table: More than 80 inches

Frequency of flooding: None

Frequency of ponding: None

Available water capacity: High (about 9.2 inches)

Interpretive groups

Land capability (nonirrigated): 7e

Typical profile

0 to 6 inches: Silt loam

6 to 68 inches: Silty clay loam

Description of Wharton

Setting

Landform: Hills

Landform position (two-dimensional): Backslope

Landform position (three-dimensional): Side slope

Down-slope shape: Convex

Custom Soil Resource Report

Across-slope shape: Linear
Parent material: Residuum

Properties and qualities

Slope: 25 to 35 percent
Depth to restrictive feature: 40 to 100 inches to paralithic bedrock
Drainage class: Moderately well drained
Capacity of the most limiting layer to transmit water (Ksat): Moderately low to moderately high (0.06 to 0.60 in/hr)
Depth to water table: About 18 to 36 inches
Frequency of flooding: None
Frequency of ponding: None
Available water capacity: Moderate (about 8.6 inches)

Interpretive groups

Land capability (nonirrigated): 6e

Typical profile

0 to 5 inches: Silt loam
5 to 60 inches: Silty clay loam

Description of Latham

Setting

Landform: Hills
Landform position (two-dimensional): Backslope
Landform position (three-dimensional): Side slope
Down-slope shape: Convex
Across-slope shape: Linear
Parent material: Residuum

Properties and qualities

Slope: 25 to 35 percent
Depth to restrictive feature: 20 to 40 inches to paralithic bedrock
Drainage class: Moderately well drained
Capacity of the most limiting layer to transmit water (Ksat): Very low to moderately high (0.00 to 0.20 in/hr)
Depth to water table: About 18 to 36 inches
Frequency of flooding: None
Frequency of ponding: None
Available water capacity: Low (about 4.8 inches)

Interpretive groups

Land capability (nonirrigated): 6e

Typical profile

0 to 9 inches: Silt loam
9 to 33 inches: Silty clay loam
33 to 38 inches: Weathered bedrock

Minor Components

Berks

Percent of map unit: 10 percent
Landform: Hills

Brownsville

Percent of map unit: 5 percent
Landform: Hills

TcB—Tilsit-Coolville association, undulating

Map Unit Setting

Elevation: 720 to 1,140 feet

Mean annual precipitation: 35 to 45 inches

Mean annual air temperature: 50 to 57 degrees F

Frost-free period: 154 to 193 days

Map Unit Composition

Tilsit and similar soils: 60 percent

Coolville and similar soils: 25 percent

Minor components: 15 percent

Description of Tilsit

Setting

Landform: Hills

Landform position (two-dimensional): Summit

Landform position (three-dimensional): Interfluve

Down-slope shape: Convex

Across-slope shape: Linear

Parent material: Residuum

Properties and qualities

Slope: 3 to 8 percent

Depth to restrictive feature: 22 to 28 inches to fragipan; 40 to 120 inches to lithic bedrock

Drainage class: Moderately well drained

Capacity of the most limiting layer to transmit water (Ksat): Moderately low to moderately high (0.06 to 0.20 in/hr)

Depth to water table: About 18 to 30 inches

Frequency of flooding: None

Frequency of ponding: None

Available water capacity: Low (about 4.6 inches)

Interpretive groups

Land capability (nonirrigated): 2e

Typical profile

0 to 8 inches: Silt loam

8 to 24 inches: Silt loam

24 to 47 inches: Silt loam

47 to 60 inches: Silty clay loam

Description of Coolville

Setting

Landform: Hills

Custom Soil Resource Report

Landform position (two-dimensional): Summit
Landform position (three-dimensional): Interfluve
Down-slope shape: Convex
Across-slope shape: Linear
Parent material: Residuum

Properties and qualities

Slope: 3 to 8 percent
Depth to restrictive feature: 40 to 60 inches to paralithic bedrock
Drainage class: Moderately well drained
Capacity of the most limiting layer to transmit water (Ksat): Very low to moderately high (0.00 to 0.20 in/hr)
Depth to water table: About 24 to 42 inches
Frequency of flooding: None
Frequency of ponding: None
Available water capacity: Moderate (about 6.9 inches)

Interpretive groups

Land capability (nonirrigated): 2e

Typical profile

0 to 8 inches: Silt loam
8 to 18 inches: Silty clay loam
18 to 35 inches: Silty clay
35 to 45 inches: Channery silty clay loam
45 to 50 inches: Weathered bedrock

Minor Components

Latham

Percent of map unit: 5 percent
Landform: Hills

Gilpin

Percent of map unit: 5 percent
Landform: Hills

Berks

Percent of map unit: 5 percent
Landform: Hills

Soil Information for All Uses

Soil Properties and Qualities

The Soil Properties and Qualities section includes various soil properties and qualities displayed as thematic maps with a summary table for the soil map units in the selected area of interest. A single value or rating for each map unit is generated by aggregating the interpretive ratings of individual map unit components. This aggregation process is defined for each property or quality.

Soil Qualities and Features

Soil qualities are behavior and performance attributes that are not directly measured, but are inferred from observations of dynamic conditions and from soil properties. Example soil qualities include natural drainage, and frost action. Soil features are attributes that are not directly part of the soil. Example soil features include slope and depth to restrictive layer. These features can greatly impact the use and management of the soil.

Hydrologic Soil Group (DA 27)

Hydrologic soil groups are based on estimates of runoff potential. Soils are assigned to one of four groups according to the rate of water infiltration when the soils are not protected by vegetation, are thoroughly wet, and receive precipitation from long-duration storms.

The soils in the United States are assigned to four groups (A, B, C, and D) and three dual classes (A/D, B/D, and C/D). The groups are defined as follows:

Group A. Soils having a high infiltration rate (low runoff potential) when thoroughly wet. These consist mainly of deep, well drained to excessively drained sands or gravelly sands. These soils have a high rate of water transmission.

Group B. Soils having a moderate infiltration rate when thoroughly wet. These consist chiefly of moderately deep or deep, moderately well drained or well drained soils that have moderately fine texture to moderately coarse texture. These soils have a moderate rate of water transmission.

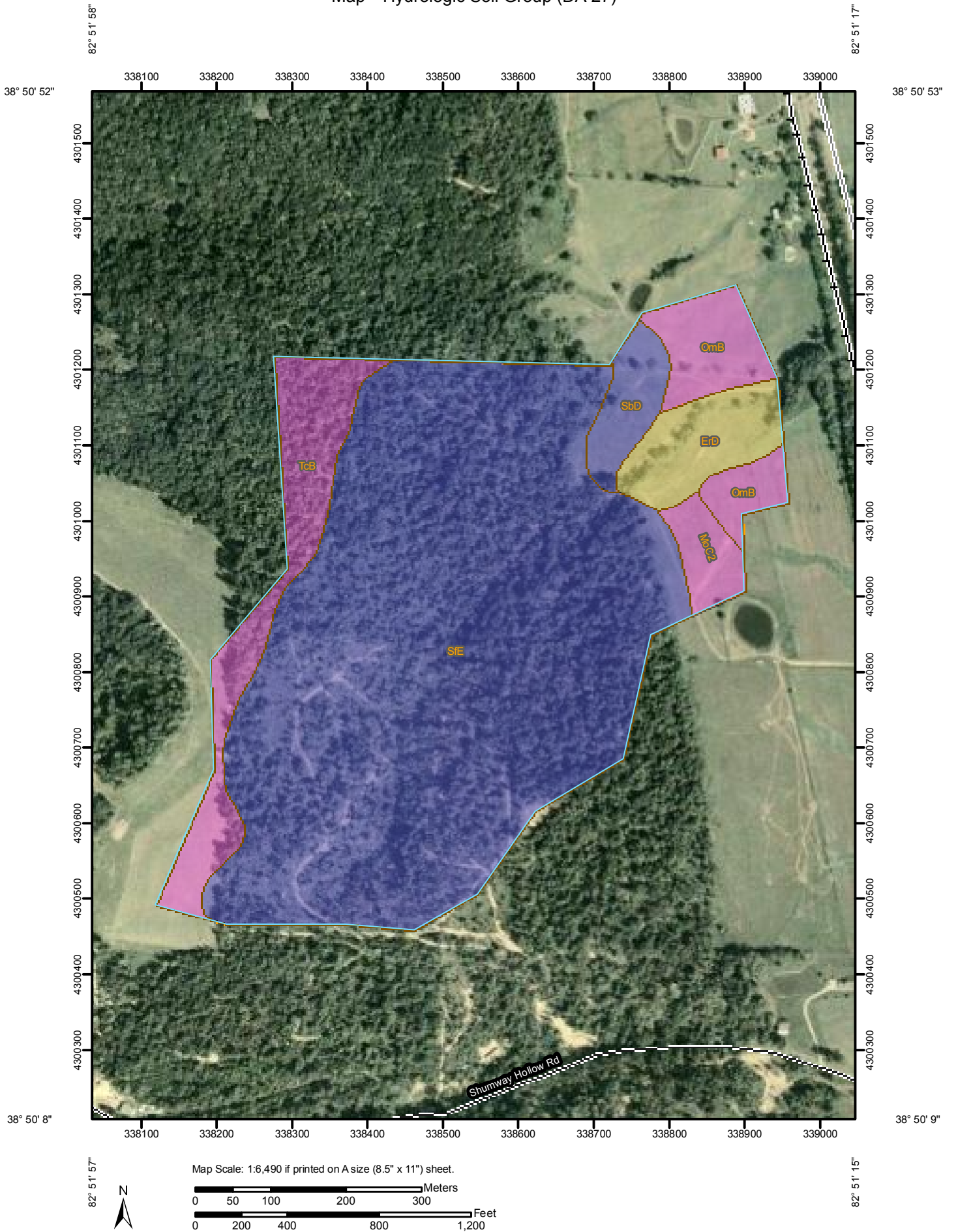
Custom Soil Resource Report

Group C. Soils having a slow infiltration rate when thoroughly wet. These consist chiefly of soils having a layer that impedes the downward movement of water or soils of moderately fine texture or fine texture. These soils have a slow rate of water transmission.

Group D. Soils having a very slow infiltration rate (high runoff potential) when thoroughly wet. These consist chiefly of clays that have a high shrink-swell potential, soils that have a high water table, soils that have a claypan or clay layer at or near the surface, and soils that are shallow over nearly impervious material. These soils have a very slow rate of water transmission.

If a soil is assigned to a dual hydrologic group (A/D, B/D, or C/D), the first letter is for drained areas and the second is for undrained areas. Only the soils that in their natural condition are in group D are assigned to dual classes.


Custom Soil Resource Report Map—Hydrologic Soil Group (DA 27)



Custom Soil Resource Report

MAP LEGEND

Area of Interest (AOI)

 Area of Interest (AOI)

Soils

 Soil Map Units

Soil Ratings


 A

 A/D

 B

 B/D

 C

 C/D


 D

 Not rated or not available

Political Features

 Cities

Water Features

 Streams and Canals


Transportation

 Rails

 Interstate Highways

 US Routes

 Major Roads

 Local Roads

MAP INFORMATION

Map Scale: 1:6,490 if printed on A size (8.5" × 11") sheet.

The soil surveys that comprise your AOI were mapped at 1:15,840.

Warning: Soil Map may not be valid at this scale.

Enlargement of maps beyond the scale of mapping can cause misunderstanding of the detail of mapping and accuracy of soil line placement. The maps do not show the small areas of contrasting soils that could have been shown at a more detailed scale.

Please rely on the bar scale on each map sheet for accurate map measurements.

Source of Map: Natural Resources Conservation Service
Web Soil Survey URL: <http://websoilsurvey.nrcs.usda.gov>
Coordinate System: UTM Zone 17N NAD83

This product is generated from the USDA-NRCS certified data as of the version date(s) listed below.

Soil Survey Area: Scioto County, Ohio
Survey Area Data: Version 10, Jan 12, 2009

Date(s) aerial images were photographed: 9/1/2004

The orthophoto or other base map on which the soil lines were compiled and digitized probably differs from the background imagery displayed on these maps. As a result, some minor shifting of map unit boundaries may be evident.

Table—Hydrologic Soil Group (DA 27)

Hydrologic Soil Group— Summary by Map Unit — Scioto County, Ohio (OH145)				
Map unit symbol	Map unit name	Rating	Acres in AOI	Percent of AOI
ErD	Ernest silt loam, 15 to 25 percent slopes	C	5.5	5.1%
MoC2	Monongahela silt loam, 8 to 15 percent slopes, eroded	D	2.5	2.3%
OmB	Omulga silt loam, 1 to 8 percent slopes	D	6.3	5.9%
SbD	Shelocta silt loam, 15 to 25 percent slopes	B	3.3	3.1%
SfE	Shelocta-Wharton-Latham association, steep	B	79.5	74.2%
TcB	Tilsit-Coolville association, undulating	D	10.0	9.3%
Totals for Area of Interest			107.1	100.0%

Rating Options—Hydrologic Soil Group (DA 27)

Aggregation Method: Dominant Condition

Component Percent Cutoff: None Specified

Tie-break Rule: Higher

References

American Association of State Highway and Transportation Officials (AASHTO). 2004. Standard specifications for transportation materials and methods of sampling and testing. 24th edition.

American Society for Testing and Materials (ASTM). 2005. Standard classification of soils for engineering purposes. ASTM Standard D2487-00.

Cowardin, L.M., V. Carter, F.C. Golet, and E.T. LaRoe. 1979. Classification of wetlands and deep-water habitats of the United States. U.S. Fish and Wildlife Service FWS/OBS-79/31.

Federal Register. July 13, 1994. Changes in hydric soils of the United States.

Federal Register. September 18, 2002. Hydric soils of the United States.

Hurt, G.W., and L.M. Vasilas, editors. Version 6.0, 2006. Field indicators of hydric soils in the United States.

National Research Council. 1995. Wetlands: Characteristics and boundaries.

Soil Survey Division Staff. 1993. Soil survey manual. Soil Conservation Service. U.S. Department of Agriculture Handbook 18. <http://soils.usda.gov/>

Soil Survey Staff. 1999. Soil taxonomy: A basic system of soil classification for making and interpreting soil surveys. 2nd edition. Natural Resources Conservation Service, U.S. Department of Agriculture Handbook 436. <http://soils.usda.gov/>

Soil Survey Staff. 2006. Keys to soil taxonomy. 10th edition. U.S. Department of Agriculture, Natural Resources Conservation Service. <http://soils.usda.gov/>

Tiner, R.W., Jr. 1985. Wetlands of Delaware. U.S. Fish and Wildlife Service and Delaware Department of Natural Resources and Environmental Control, Wetlands Section.

United States Army Corps of Engineers, Environmental Laboratory. 1987. Corps of Engineers wetlands delineation manual. Waterways Experiment Station Technical Report Y-87-1.

United States Department of Agriculture, Natural Resources Conservation Service. National forestry manual. <http://soils.usda.gov/>

United States Department of Agriculture, Natural Resources Conservation Service. National range and pasture handbook. <http://www.glti.nrcs.usda.gov/>

United States Department of Agriculture, Natural Resources Conservation Service. National soil survey handbook, title 430-VI. <http://soils.usda.gov/>

United States Department of Agriculture, Natural Resources Conservation Service. 2006. Land resource regions and major land resource areas of the United States, the Caribbean, and the Pacific Basin. U.S. Department of Agriculture Handbook 296. <http://soils.usda.gov/>

Custom Soil Resource Report

United States Department of Agriculture, Soil Conservation Service. 1961. Land capability classification. U.S. Department of Agriculture Handbook 210.