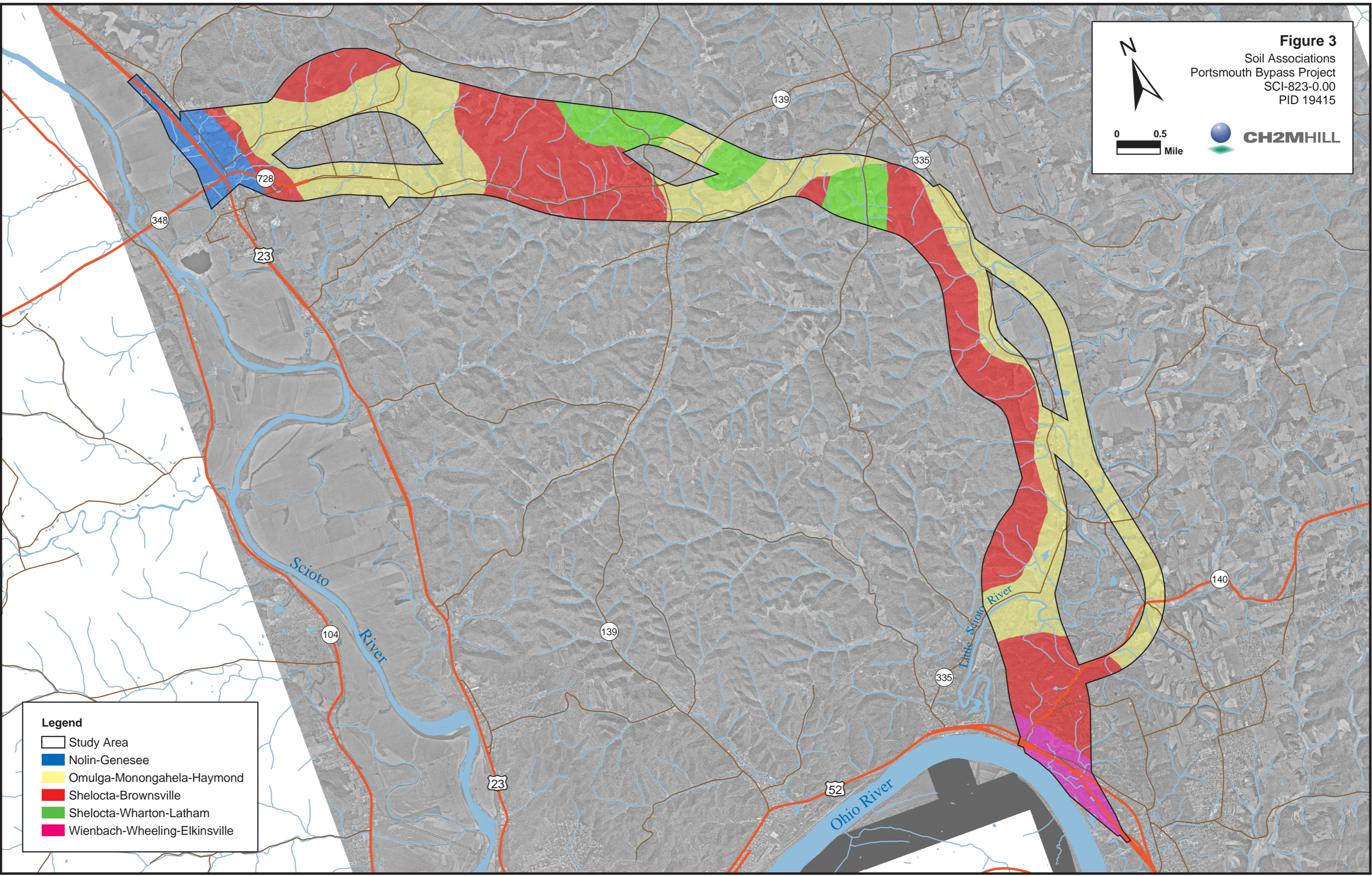


Figure 2
Study Area
Portsmouth Bypass Project
SCI-823-0.00
PID 19415

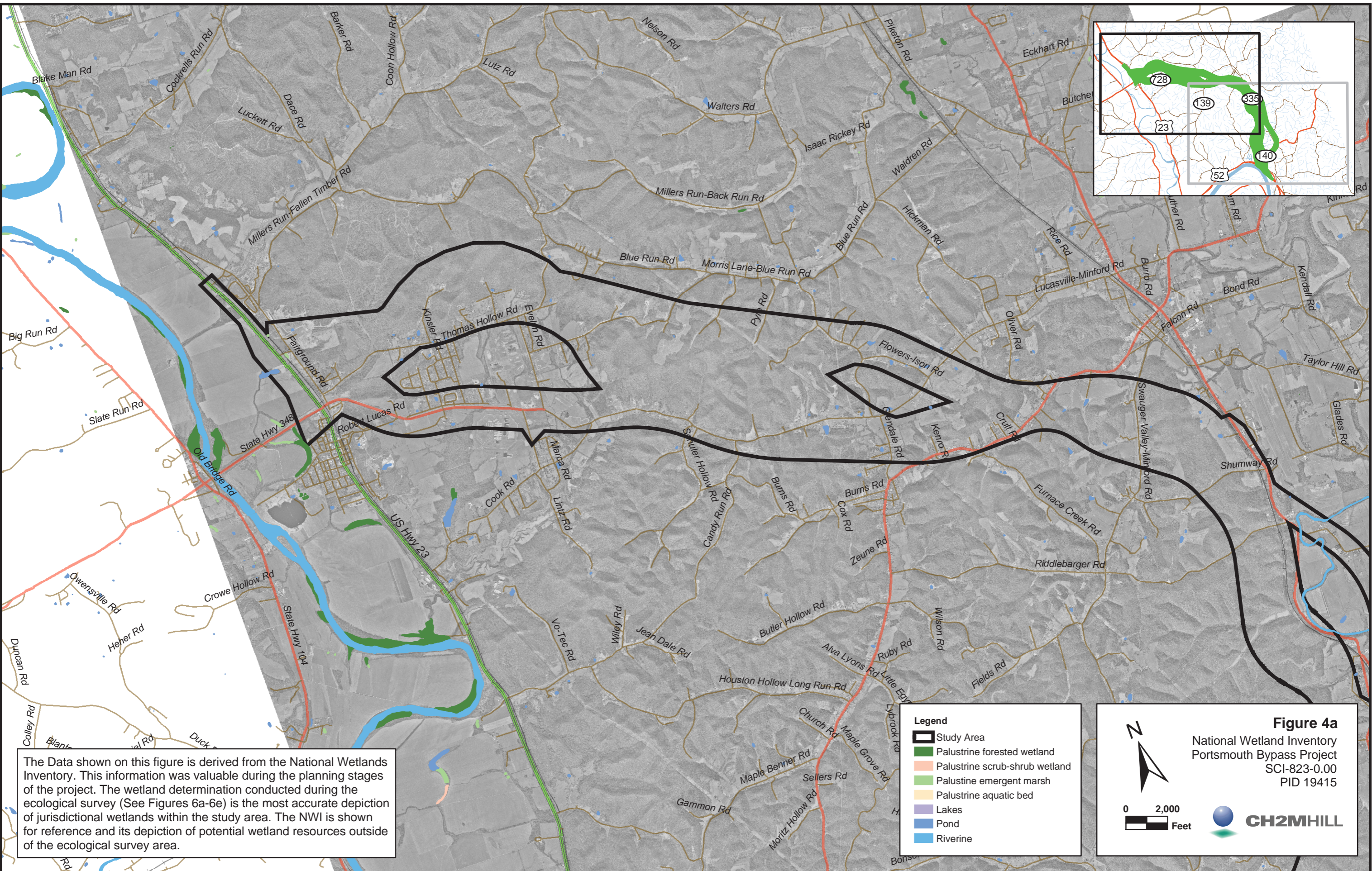


Figure 3
Soil Associations
Portsmouth Bypass Project
SCI-823-0.00
PID 19415



Legend

- Study Area
- Nolin-Genesee
- Omulga-Monongahela-Haymond
- Shelocta-Brownsville
- Shelocta-Wharton-Latham
- Wienbach-Wheeling-Elkinsville



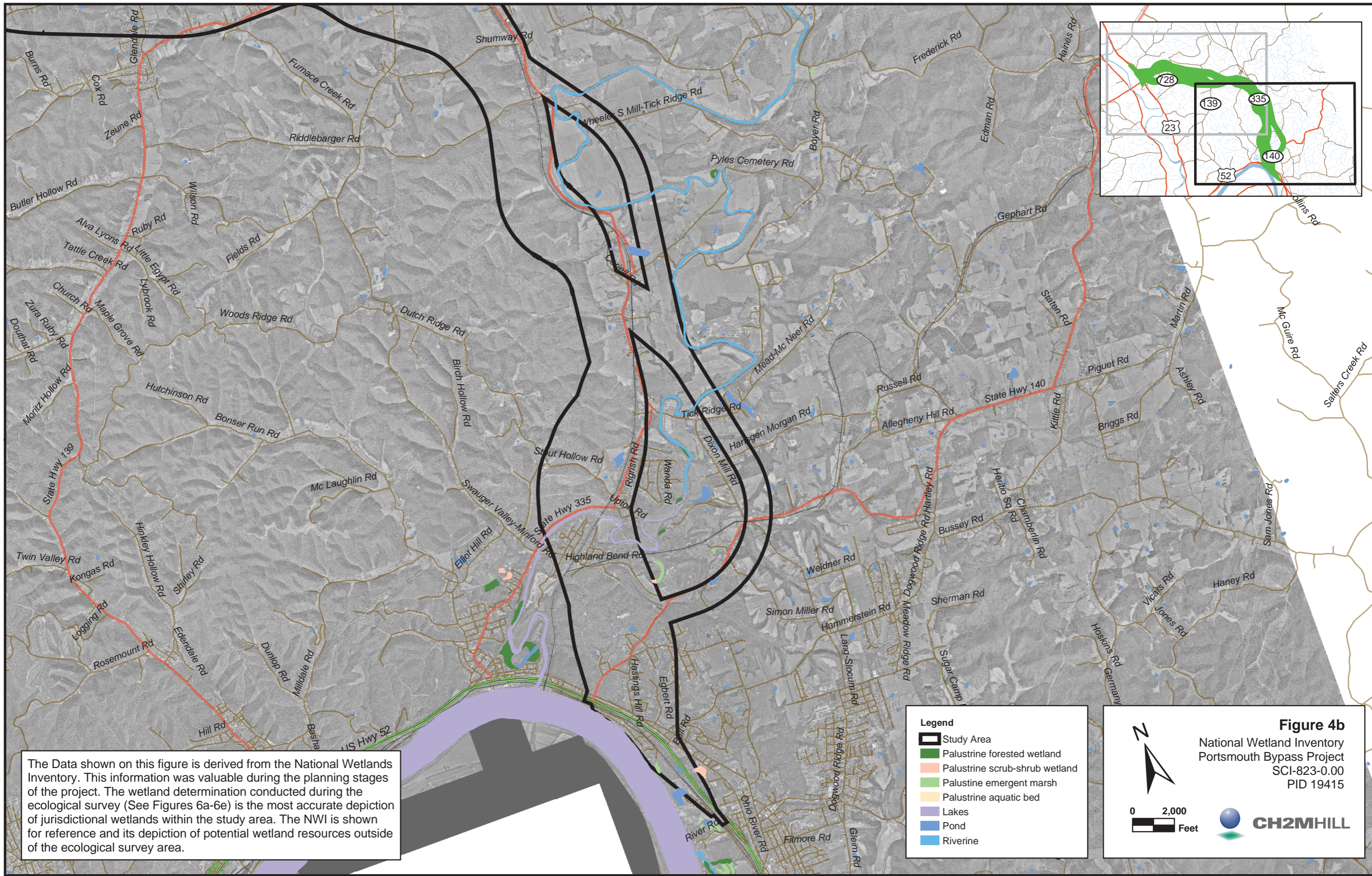
The Data shown on this figure is derived from the National Wetlands Inventory. This information was valuable during the planning stages of the project. The wetland determination conducted during the ecological survey (See Figures 6a-6e) is the most accurate depiction of jurisdictional wetlands within the study area. The NWI is shown for reference and its depiction of potential wetland resources outside of the ecological survey area.

Legend

- Study Area
- Palustrine forested wetland
- Palustrine scrub-shrub wetland
- Palustrine emergent marsh
- Palustrine aquatic bed
- Lakes
- Pond
- Riverine

Figure 4a
 National Wetland Inventory
 Portsmouth Bypass Project
 SCI-823-0.00
 PID 19415

0 2,000 Feet



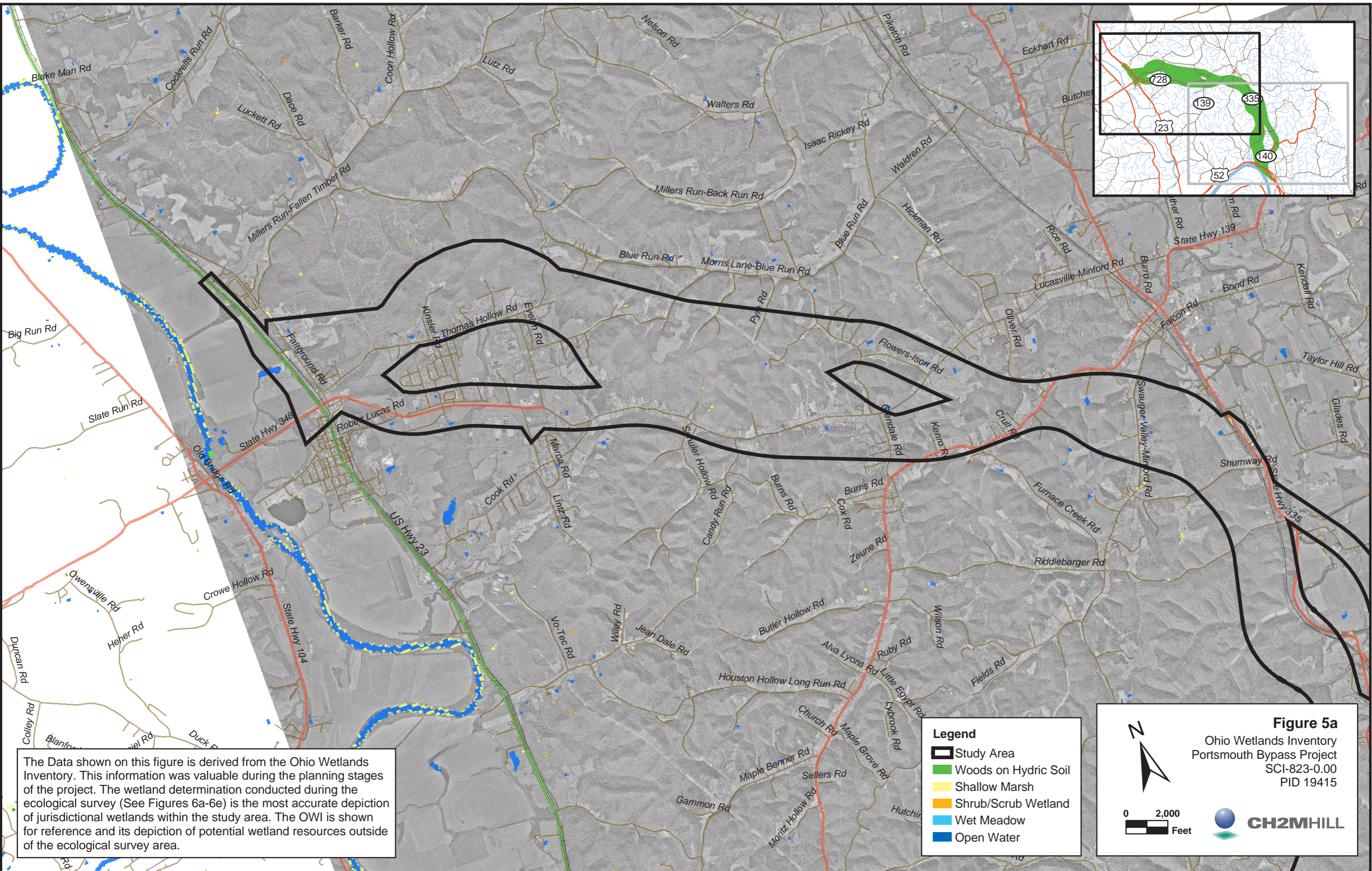
The Data shown on this figure is derived from the National Wetlands Inventory. This information was valuable during the planning stages of the project. The wetland determination conducted during the ecological survey (See Figures 6a-6e) is the most accurate depiction of jurisdictional wetlands within the study area. The NWI is shown for reference and its depiction of potential wetland resources outside of the ecological survey area.

Legend

- Study Area
- Palustrine forested wetland
- Palustrine scrub-shrub wetland
- Palustrine emergent marsh
- Palustrine aquatic bed
- Lakes
- Pond
- Riverine

Figure 4b
 National Wetland Inventory
 Portsmouth Bypass Project
 SCI-823-0.00
 PID 19415

0 2,000 Feet



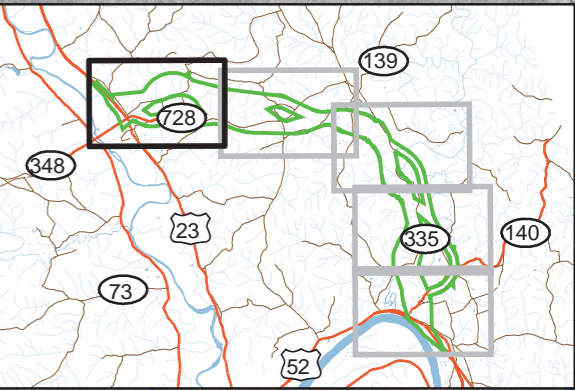
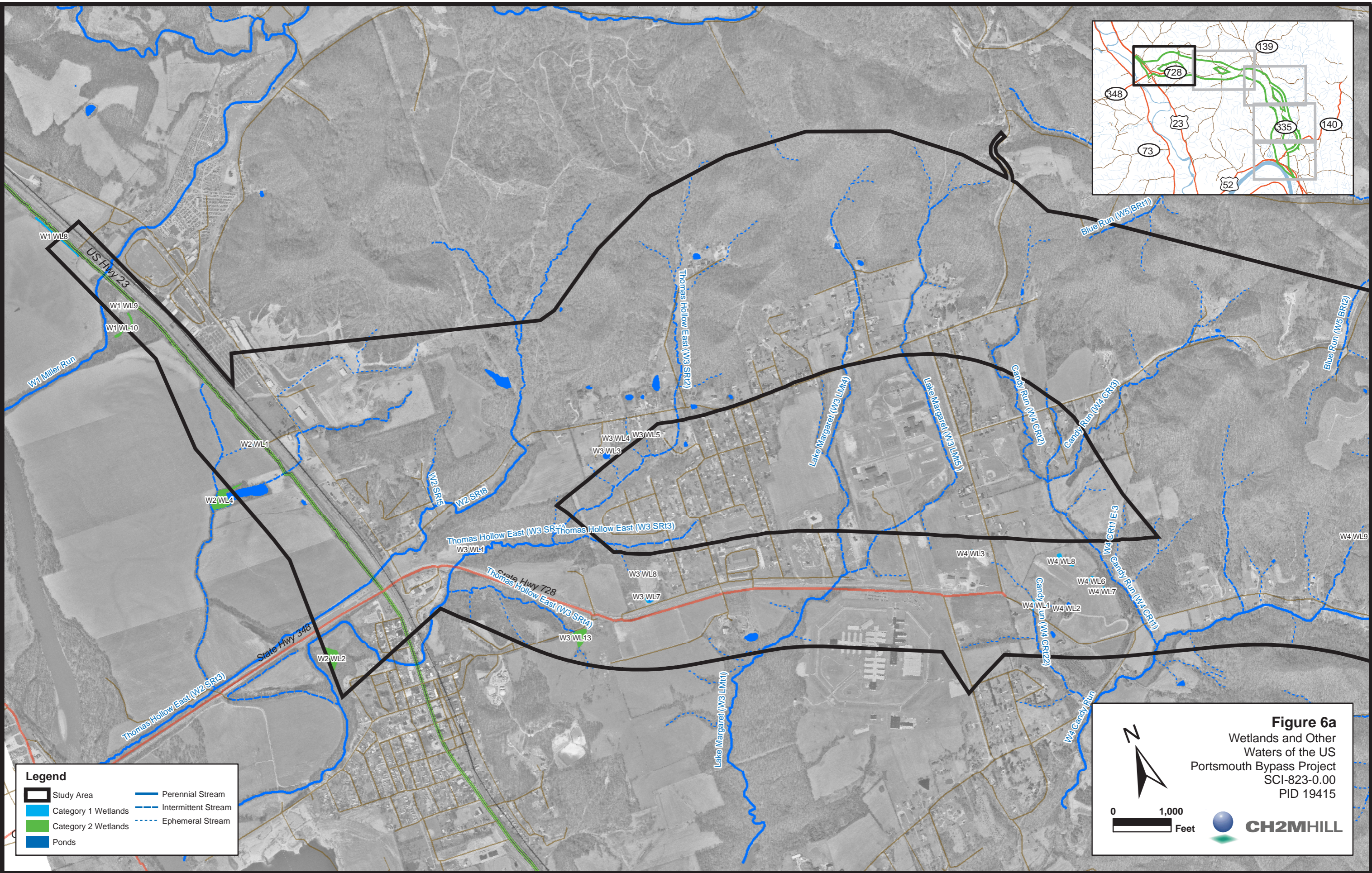
The Data shown on this figure is derived from the Ohio Wetlands Inventory. This information was valuable during the planning stages of the project. The wetland determination conducted during the ecological survey (See Figures 6a-6e) is the most accurate depiction of jurisdictional wetlands within the study area. The OWI is shown for reference and its depiction of potential wetland resources outside of the ecological survey area.

Legend

- Study Area
- Woods on Hydric Soil
- Shallow Marsh
- Shrub/Scrub Wetland
- Wet Meadow
- Open Water

Figure 5a
Ohio Wetlands Inventory
Portsmouth Bypass Project
SCI-823-0.00
PID 19415

0 2,000 Feet

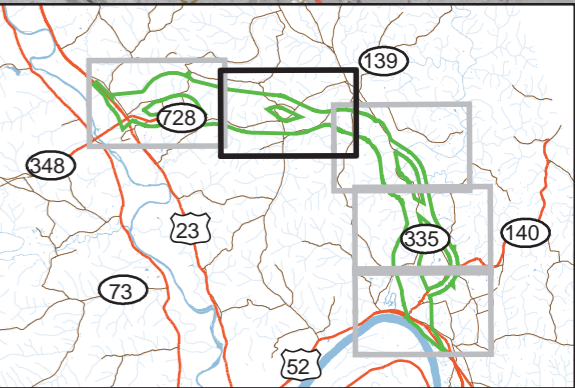
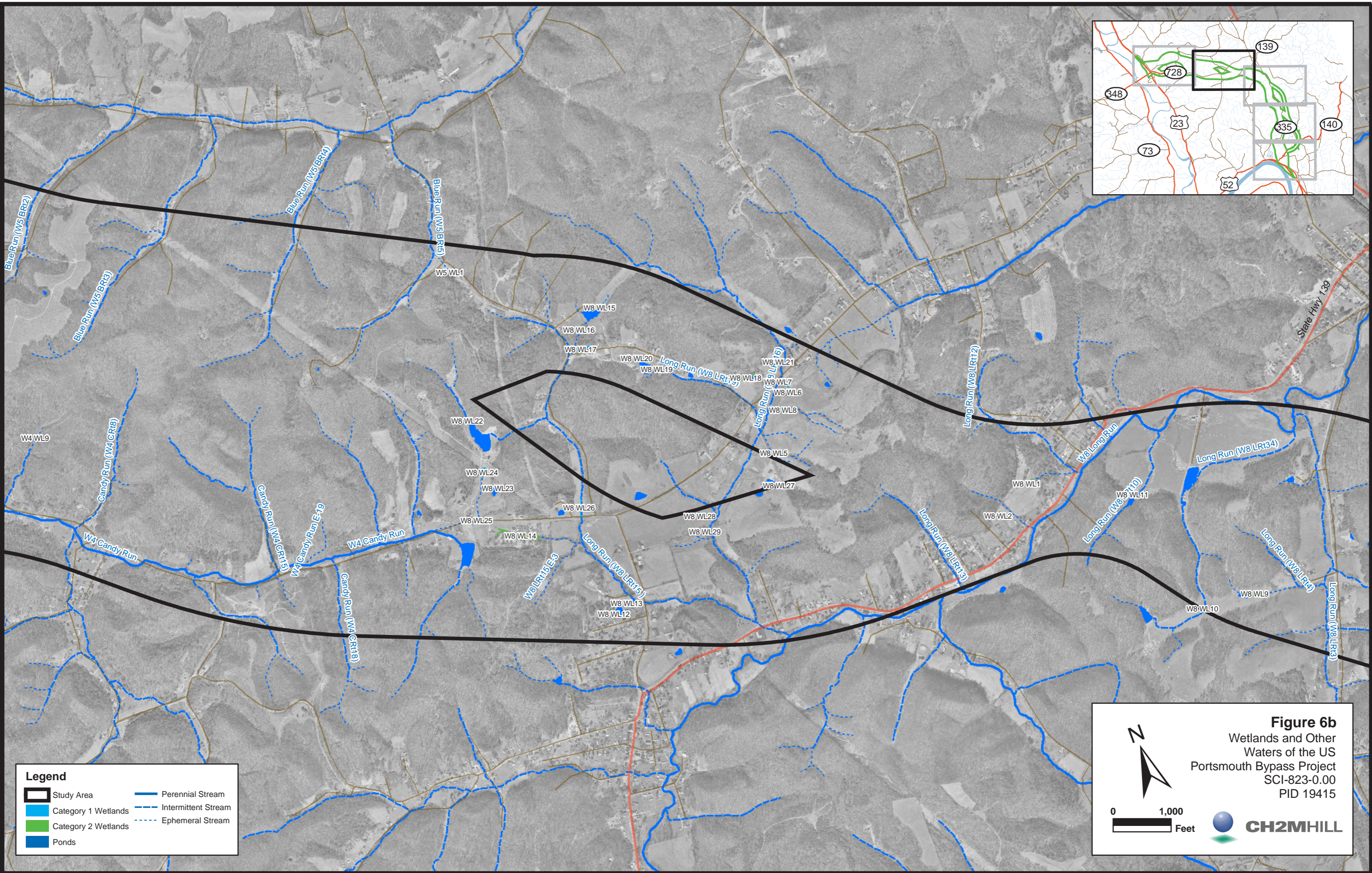


Legend

Study Area	Perennial Stream
Category 1 Wetlands	Intermittent Stream
Category 2 Wetlands	Ephemeral Stream
Ponds	

Figure 6a
 Wetlands and Other
 Waters of the US
 Portsmouth Bypass Project
 SCI-823-0.00
 PID 19415

0 1,000
 Feet

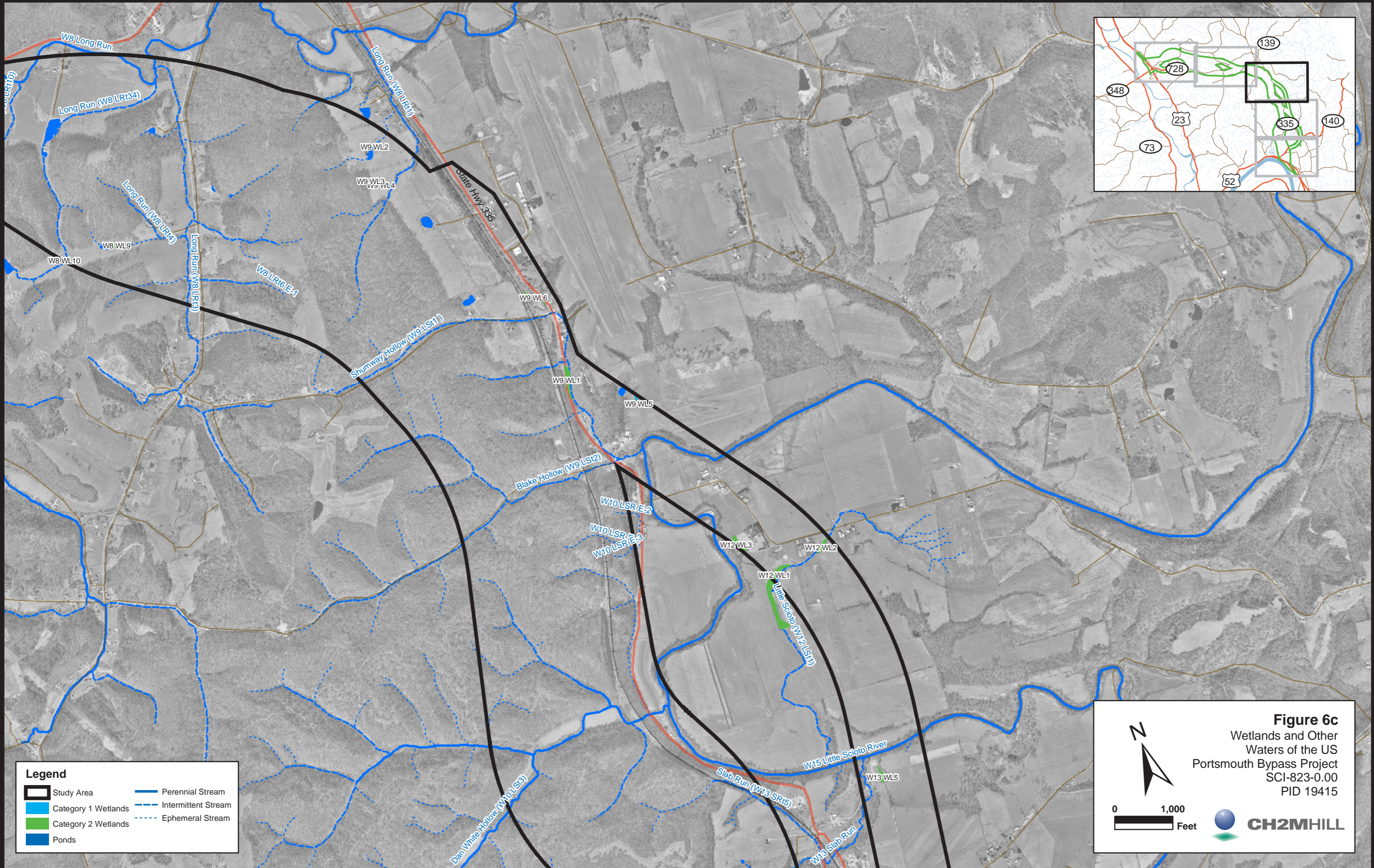


Legend

Study Area	Perennial Stream
Category 1 Wetlands	Intermittent Stream
Category 2 Wetlands	Ephemeral Stream
Ponds	

Figure 6b
 Wetlands and Other
 Waters of the US
 Portsmouth Bypass Project
 SCI-823-0.00
 PID 19415

0 1,000
 Feet



Legend

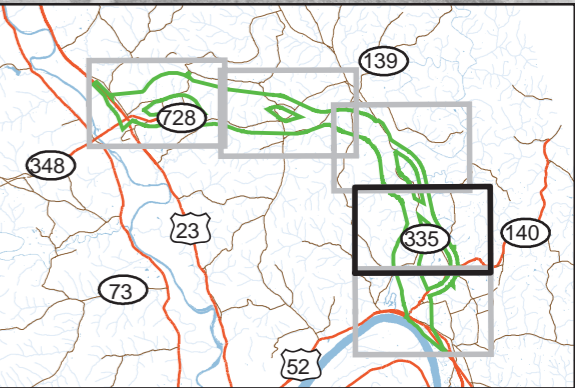
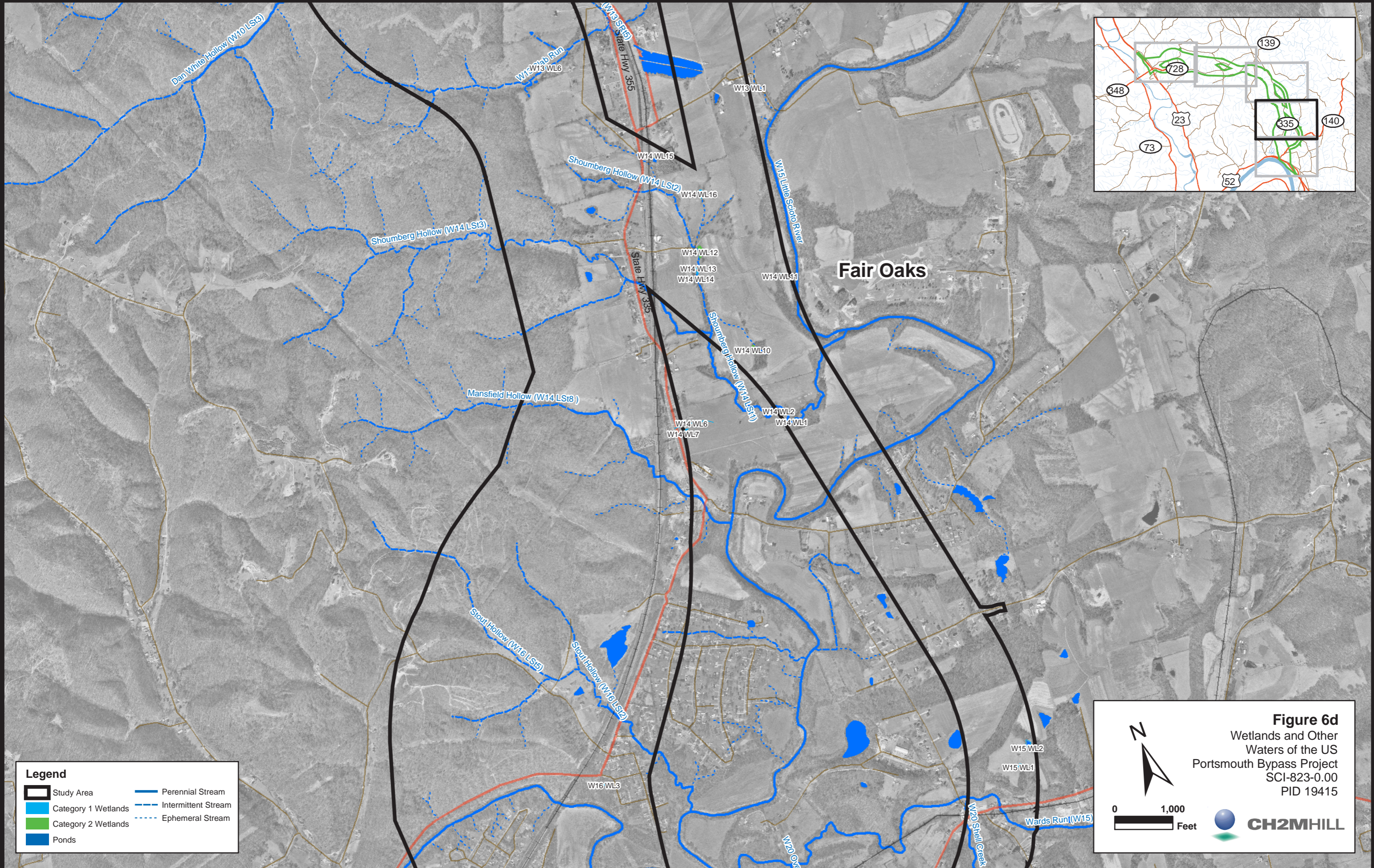
Study Area	Perennial Stream
Category 1 Wetlands	Intermittent Stream
Category 2 Wetlands	Ephemeral Stream
Ponds	

Figure 6c
 Wetlands and Other Waters of the US
 Portsmouth Bypass Project
 SCI-823-0.00
 PID 19415

0 1,000 Feet

N

CH2MHILL

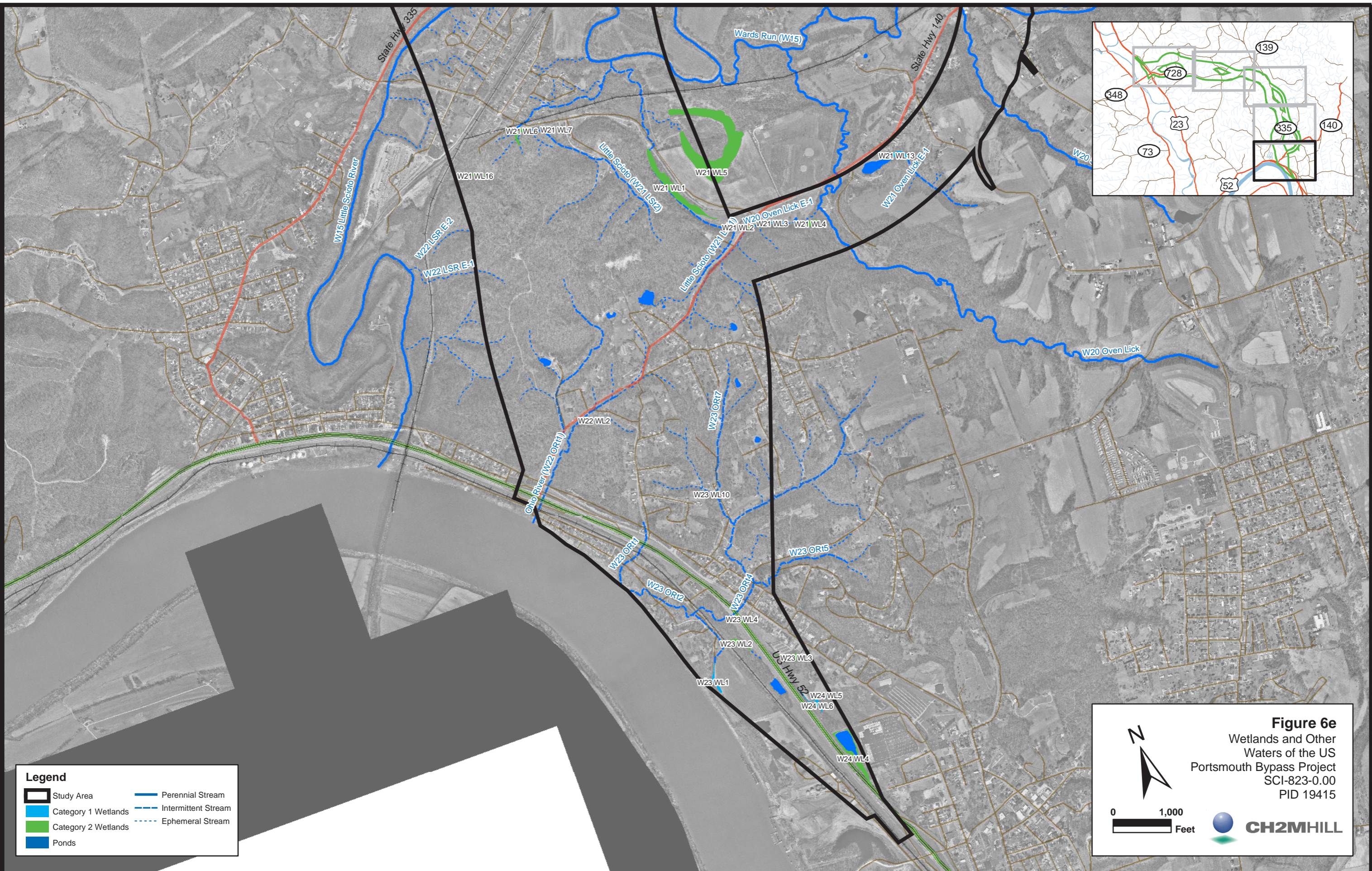


Legend

Study Area	Perennial Stream
Category 1 Wetlands	Intermittent Stream
Category 2 Wetlands	Ephemeral Stream
Ponds	

Figure 6d
 Wetlands and Other
 Waters of the US
 Portsmouth Bypass Project
 SCI-823-0.00
 PID 19415

0 1,000
 Feet



Legend

Study Area	Perennial Stream
Category 1 Wetlands	Intermittent Stream
Category 2 Wetlands	Ephemeral Stream
Ponds	

Figure 6e
 Wetlands and Other Waters of the US
 Portsmouth Bypass Project
 SCI-823-0.00
 PID 19415

0 1,000 Feet

N

CH2MHILL

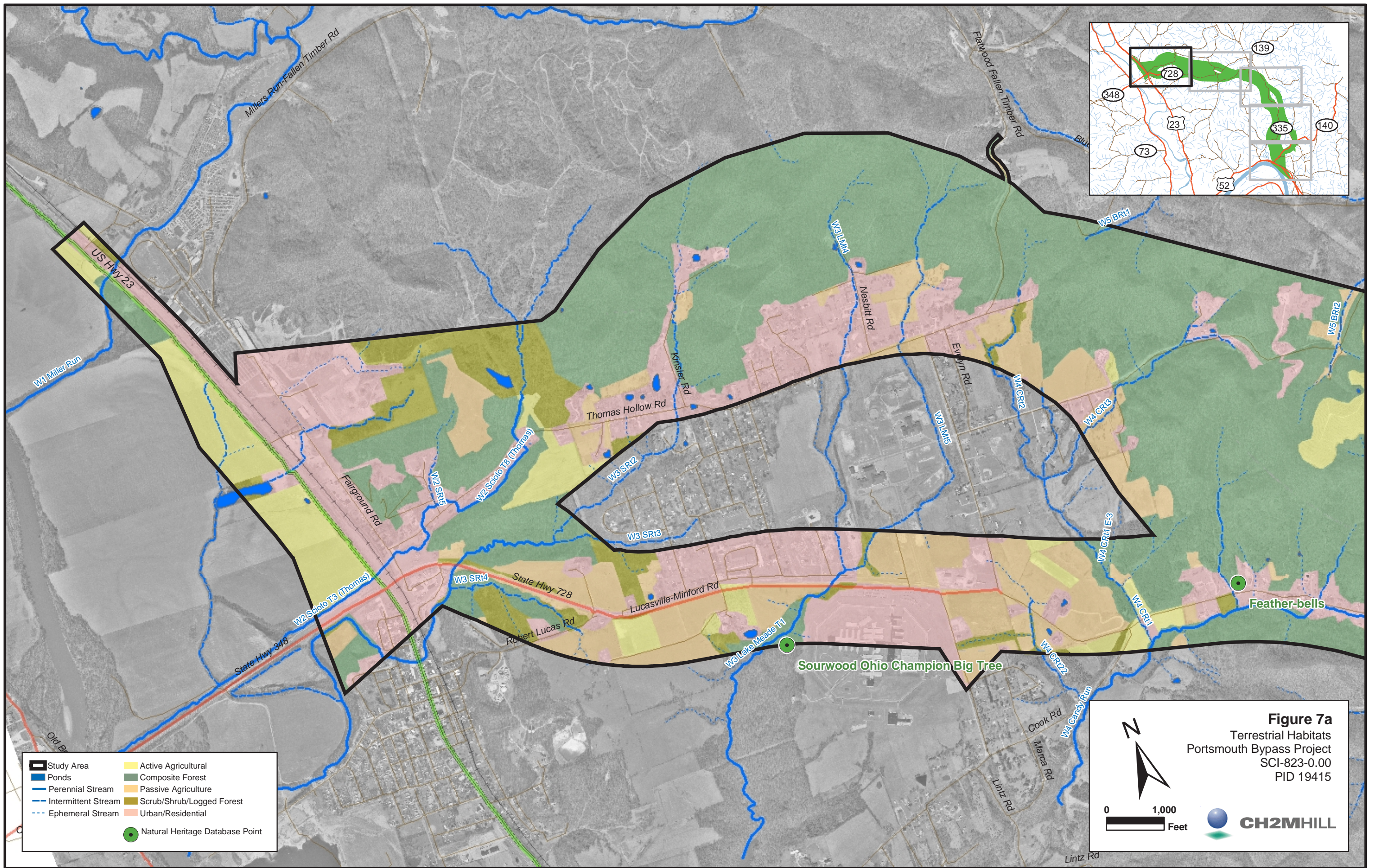
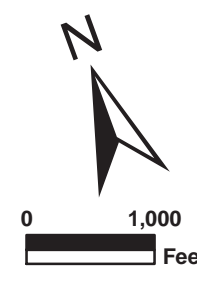
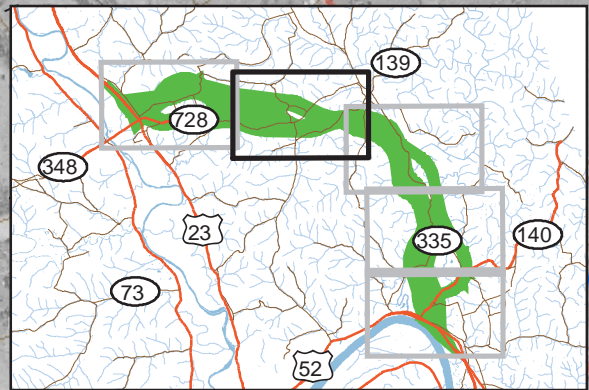
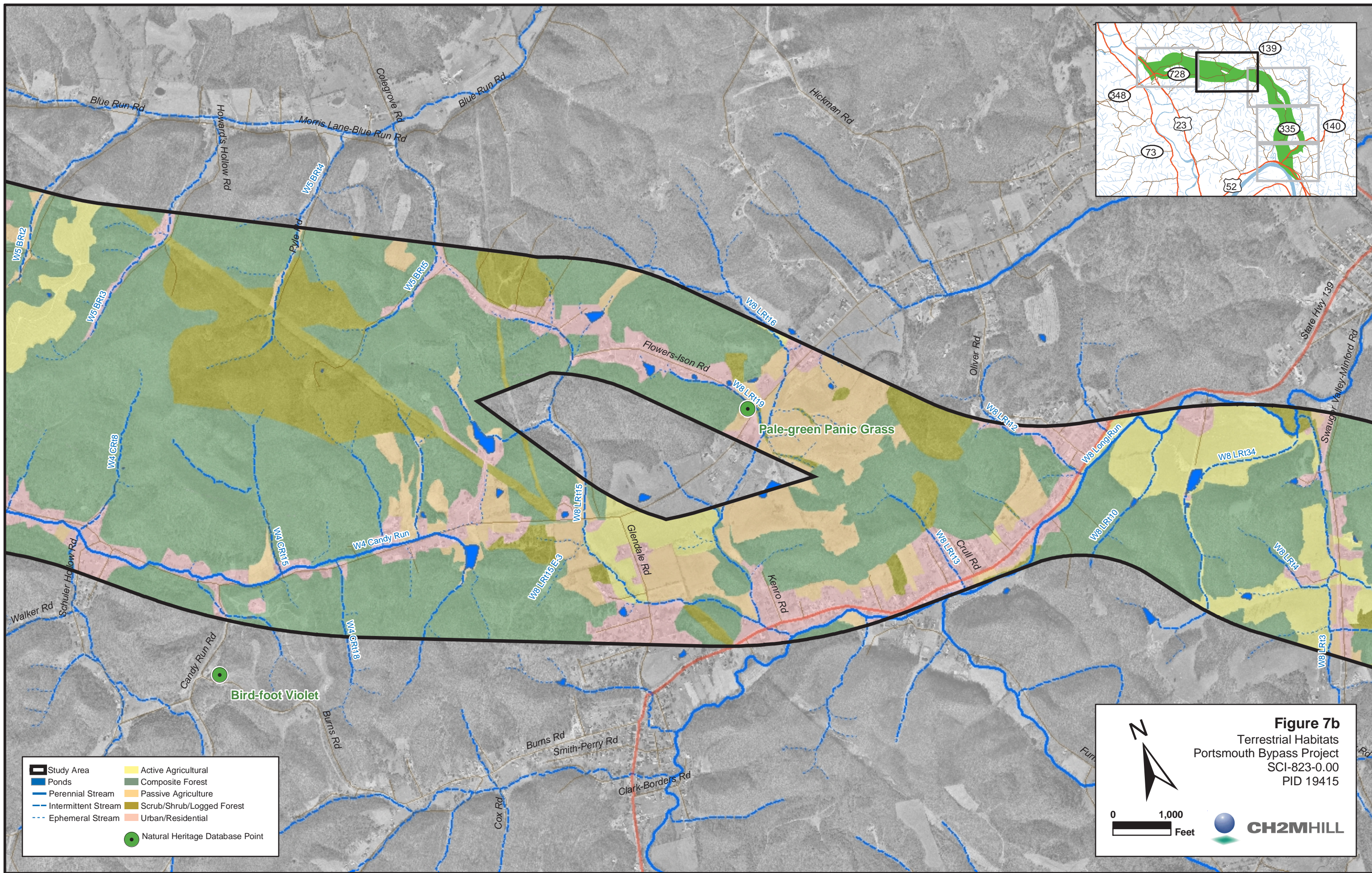


Figure 7a
 Terrestrial Habitats
 Portsmouth Bypass Project
 SCI-823-0.00
 PID 19415



- Study Area
- Ponds
- Perennial Stream
- Intermittent Stream
- Ephemeral Stream
- Active Agricultural
- Composite Forest
- Passive Agriculture
- Scrub/Shrub/Logged Forest
- Urban/Residential
- Natural Heritage Database Point

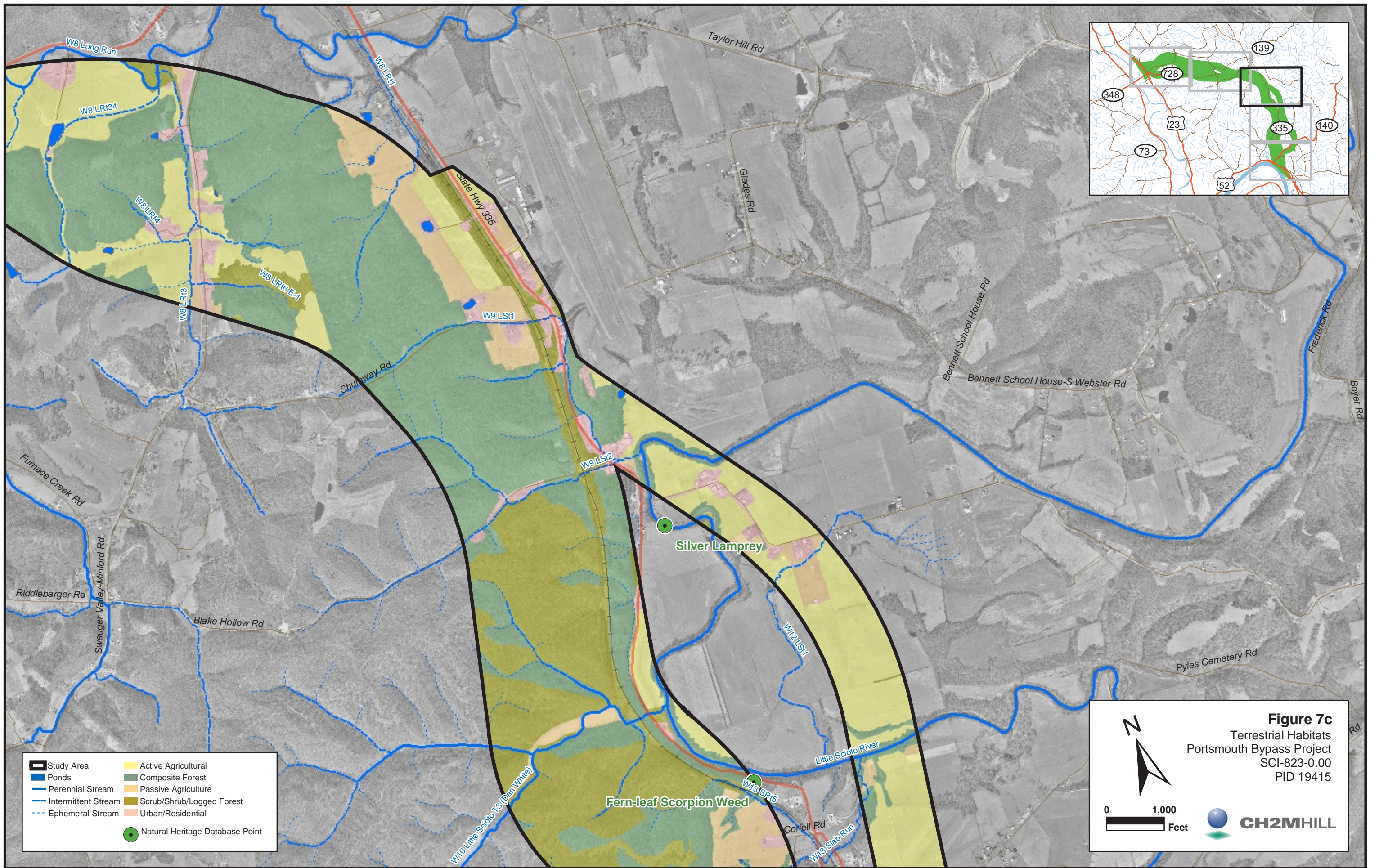




- | | |
|---------------------------------|---------------------------|
| Study Area | Active Agricultural |
| Ponds | Composite Forest |
| Perennial Stream | Passive Agriculture |
| Intermittent Stream | Scrub/Shrub/Logged Forest |
| Ephemeral Stream | Urban/Residential |
| Natural Heritage Database Point | |

Figure 7b
 Terrestrial Habitats
 Portsmouth Bypass Project
 SCI-823-0.00
 PID 19415

0 1,000
 Feet

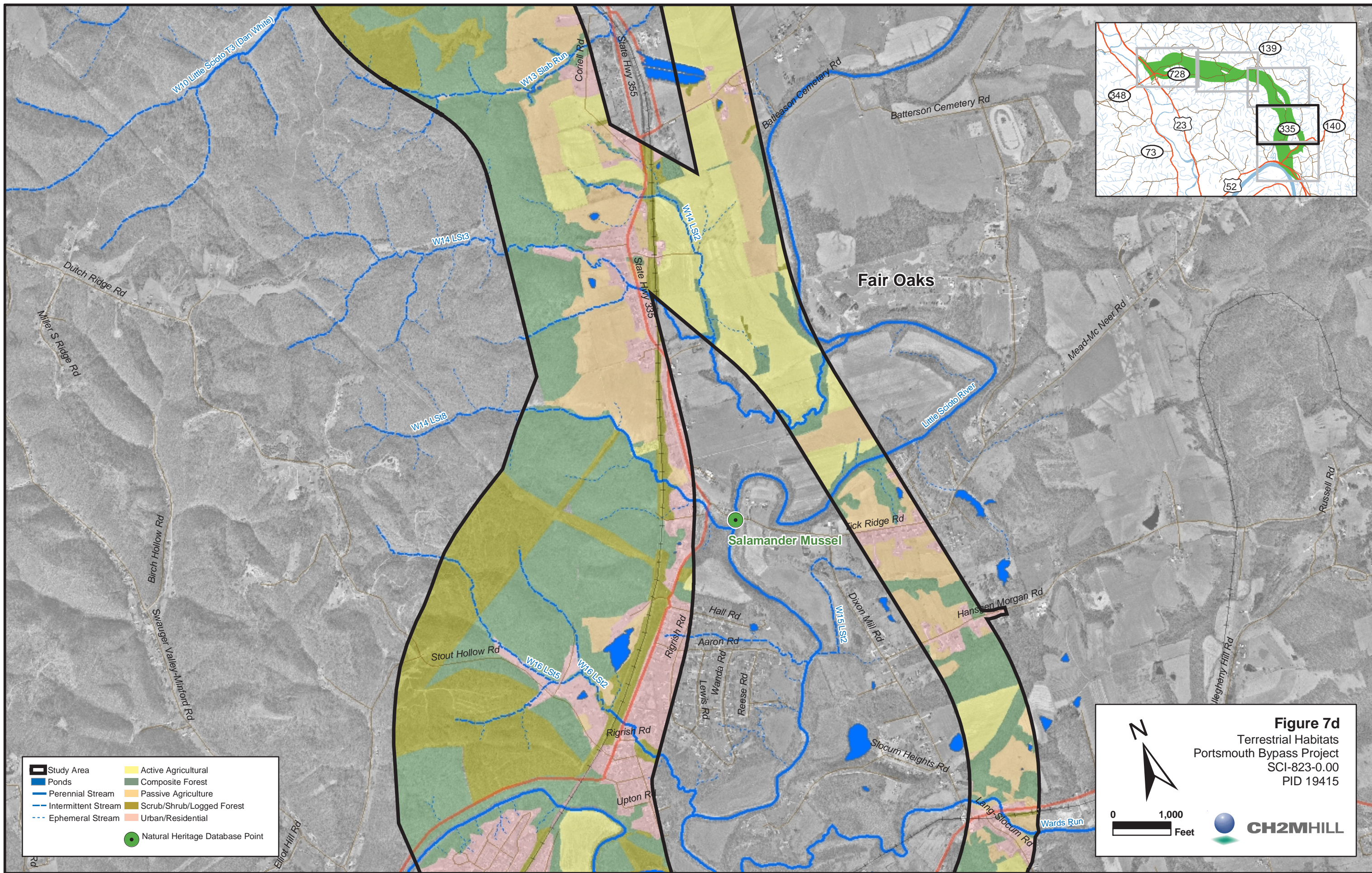


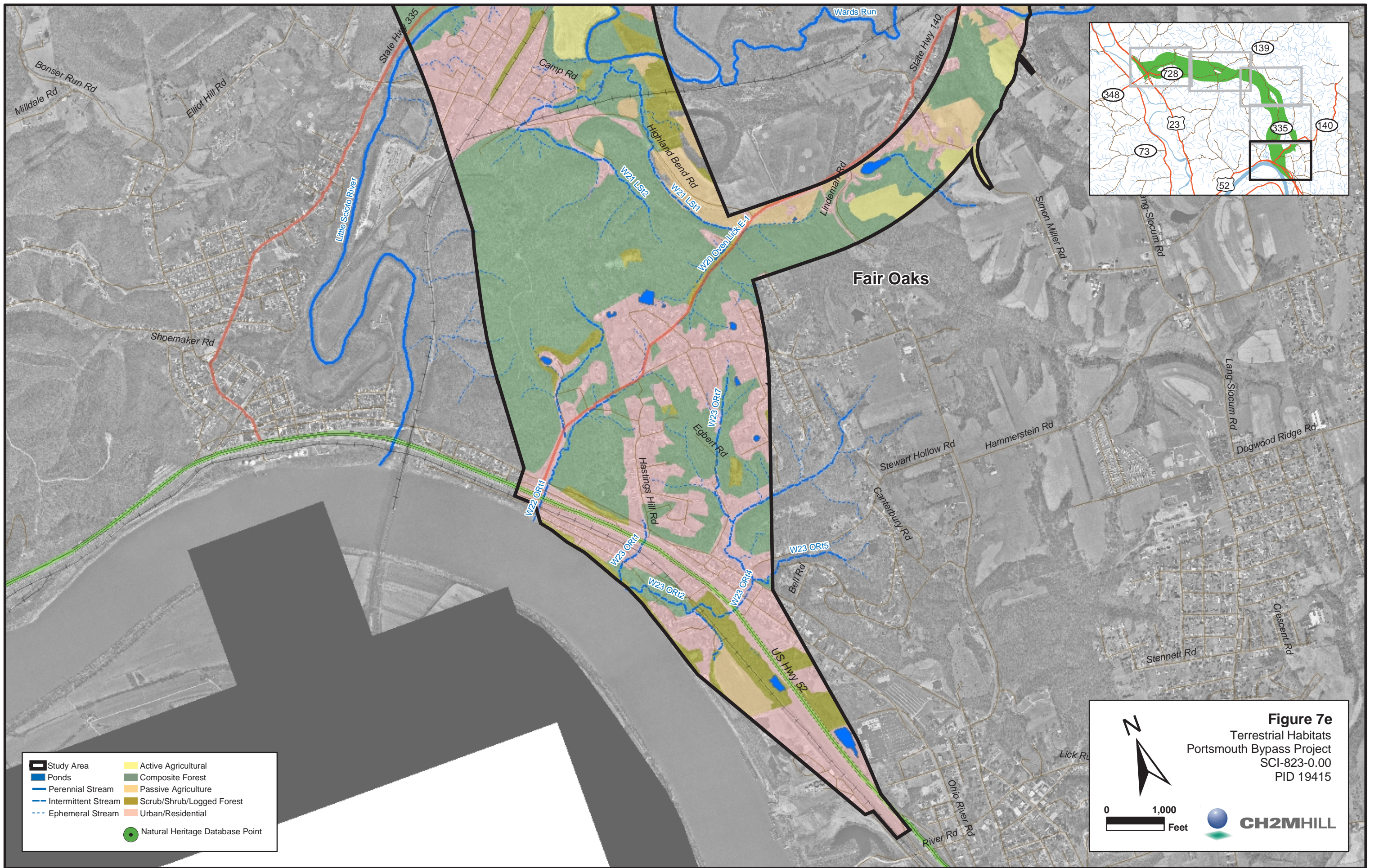
- | | |
|---------------------------------|---------------------------|
| Study Area | Active Agricultural |
| Ponds | Composite Forest |
| Perennial Stream | Passive Agriculture |
| Intermittent Stream | Scrub/Shrub/Logged Forest |
| Ephemeral Stream | Urban/Residential |
| Natural Heritage Database Point | |

Figure 7c
 Terrestrial Habitats
 Portsmouth Bypass Project
 SCI-823-0.00
 PID 19415

0 1,000
 Feet


CH2MHILL






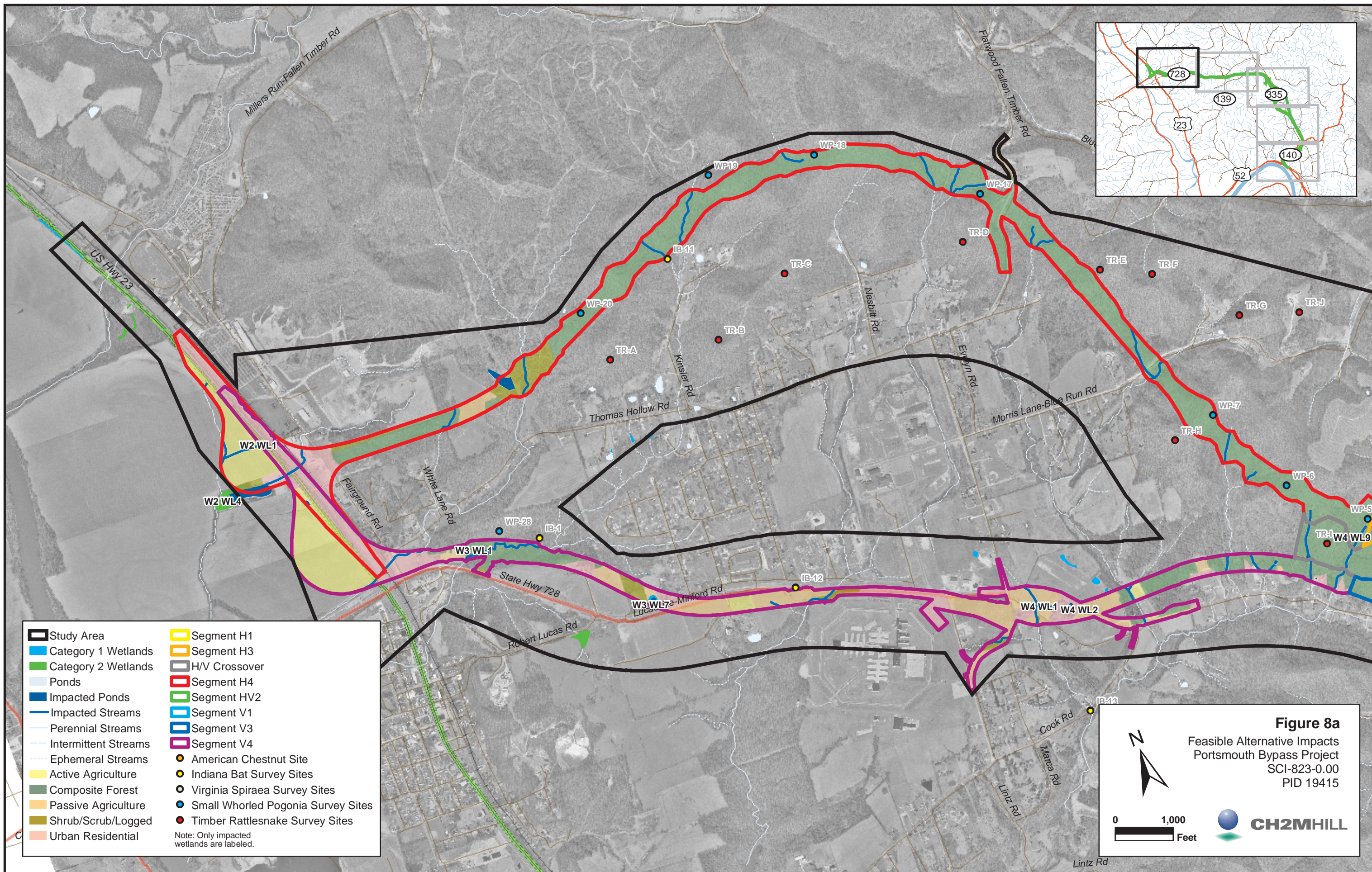
- Study Area
- Active Agricultural
- Ponds
- Composite Forest
- Perennial Stream
- Intermittent Stream
- Ephemeral Stream
- Passive Agriculture
- Scrub/Shrub/Logged Forest
- Urban/Residential
- Natural Heritage Database Point

Figure 7e
 Terrestrial Habitats
 Portsmouth Bypass Project
 SCI-823-0.00
 PID 19415



0 1,000
Feet

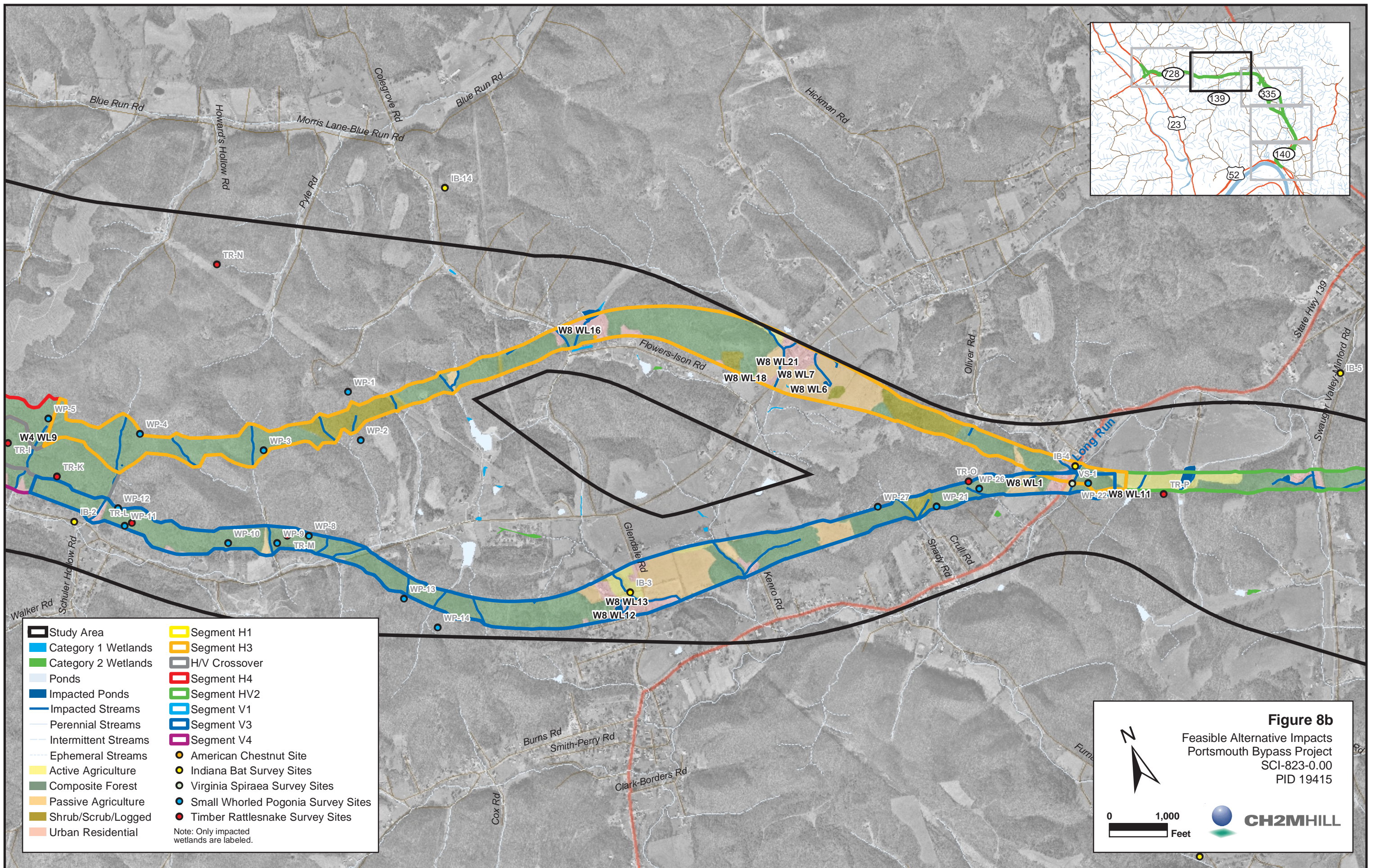




Study Area	Segment H1
Category 1 Wetlands	Segment H3
Category 2 Wetlands	H/V Crossover
Ponds	Segment H4
Impacted Ponds	Segment HV2
Impacted Streams	Segment V1
Perennial Streams	Segment V3
Intermittent Streams	Segment V4
Ephemeral Streams	American Chestnut Site
Active Agriculture	Indiana Bat Survey Sites
Composite Forest	Virginia Spiraea Survey Sites
Passive Agriculture	Small Whorled Pogonia Survey Sites
Shrub/Scrub/Logged	Timber Rattlesnake Survey Sites
Urban Residential	

Note: Only impacted wetlands are labeled.

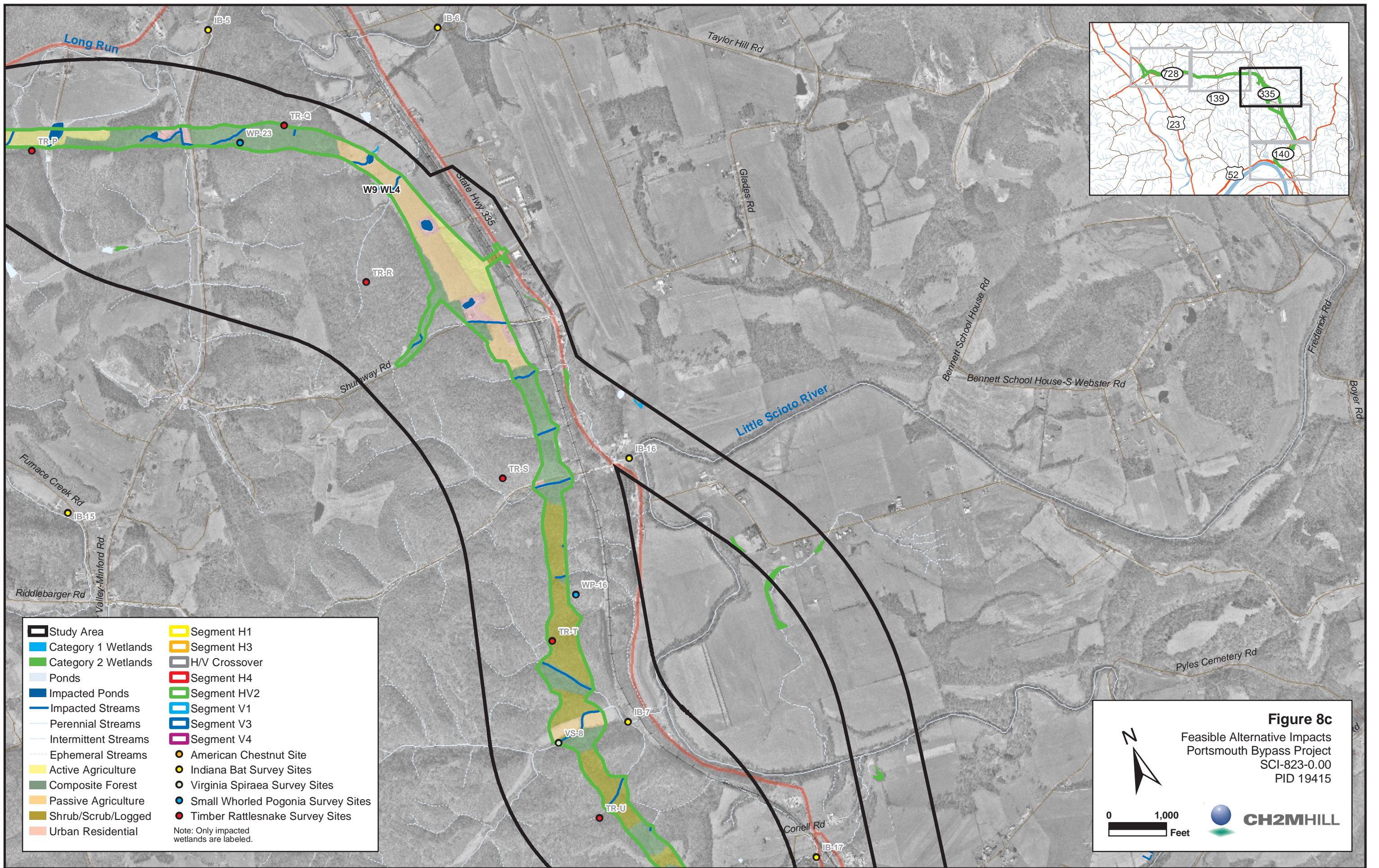
Figure 8a
 Feasible Alternative Impacts
 Portsmouth Bypass Project
 SCI-823-0.00
 PID 19415



- | | |
|----------------------|------------------------------------|
| Study Area | Segment H1 |
| Category 1 Wetlands | Segment H3 |
| Category 2 Wetlands | H/V Crossover |
| Ponds | Segment H4 |
| Impacted Ponds | Segment HV2 |
| Impacted Streams | Segment V1 |
| Perennial Streams | Segment V3 |
| Intermittent Streams | Segment V4 |
| Ephemeral Streams | American Chestnut Site |
| Active Agriculture | Indiana Bat Survey Sites |
| Composite Forest | Virginia Spiraea Survey Sites |
| Passive Agriculture | Small Whorled Pogonia Survey Sites |
| Shrub/Scrub/Logged | Timber Rattlesnake Survey Sites |
| Urban Residential | |
- Note: Only impacted wetlands are labeled.

Figure 8b
 Feasible Alternative Impacts
 Portsmouth Bypass Project
 SCI-823-0.00
 PID 19415

0 1,000
 Feet



Study Area	Segment H1
Category 1 Wetlands	Segment H3
Category 2 Wetlands	H/V Crossover
Ponds	Segment H4
Impacted Ponds	Segment HV2
Impacted Streams	Segment V1
Perennial Streams	Segment V3
Intermittent Streams	Segment V4
Ephemeral Streams	American Chestnut Site
Active Agriculture	Indiana Bat Survey Sites
Composite Forest	Virginia Spiraea Survey Sites
Passive Agriculture	Small Whorled Pogonia Survey Sites
Shrub/Scrub/Logged	Timber Rattlesnake Survey Sites
Urban Residential	

Note: Only impacted wetlands are labeled.

Figure 8c
 Feasible Alternative Impacts
 Portsmouth Bypass Project
 SCI-823-0.00
 PID 19415

0 1,000
 Feet

