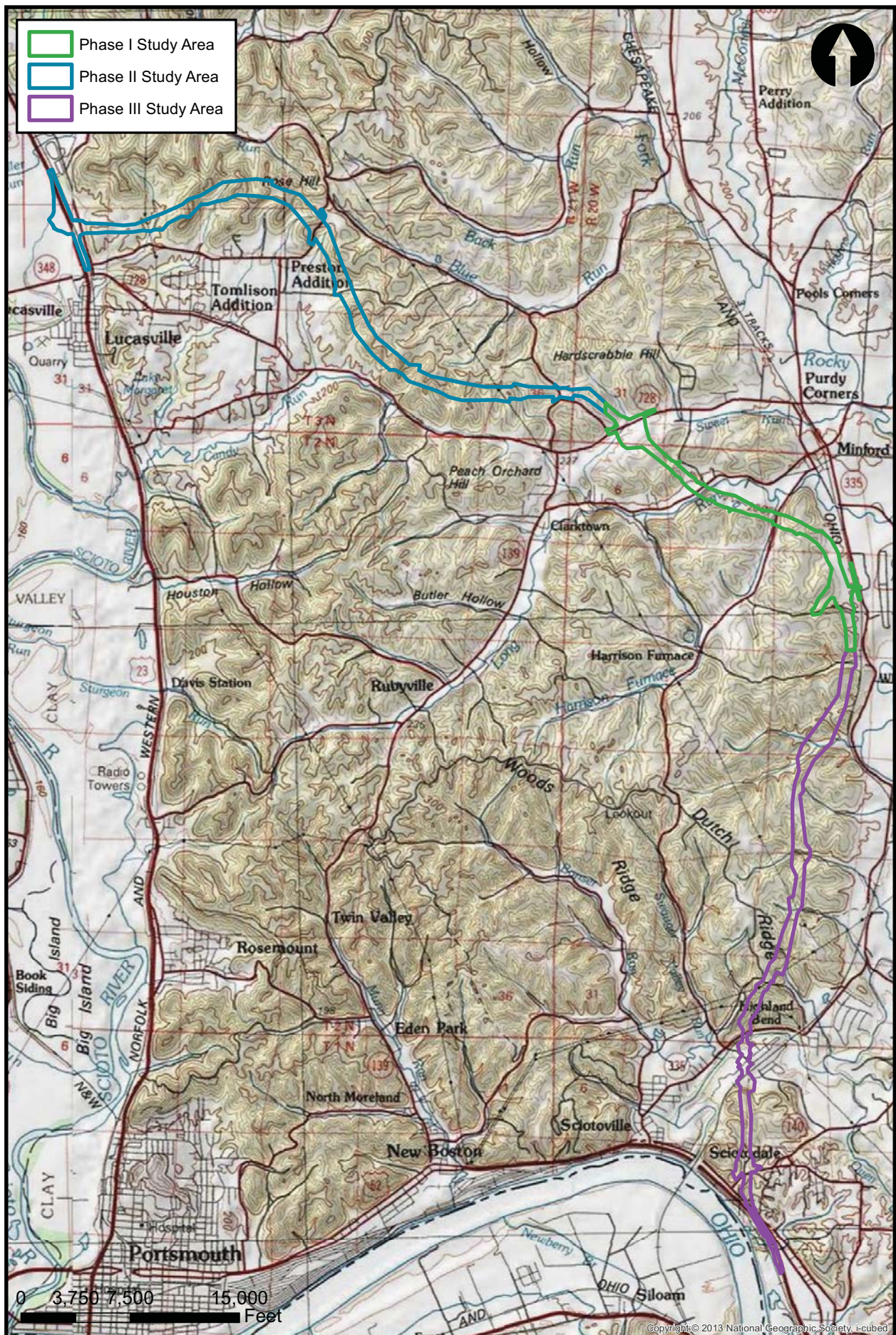


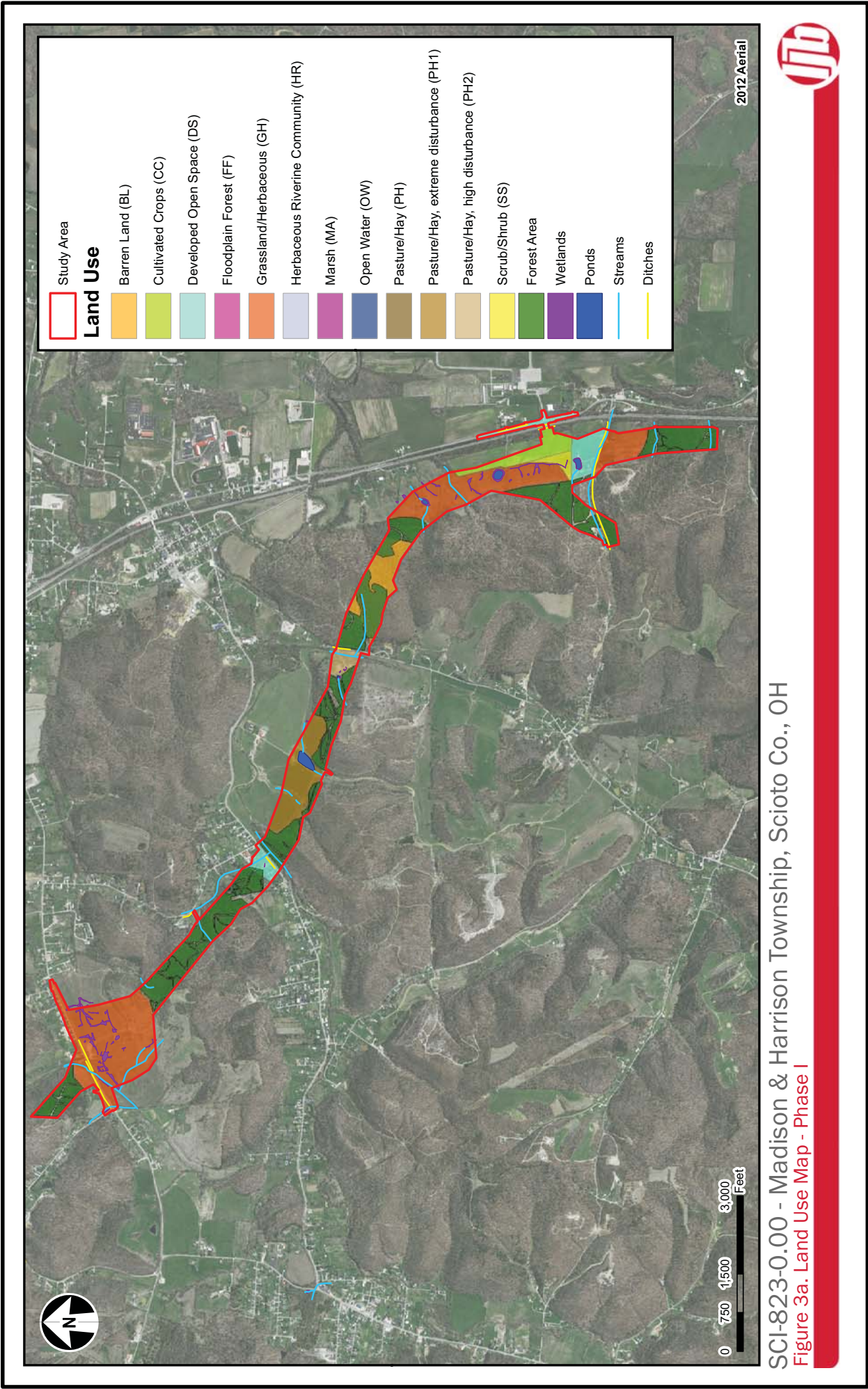
> SCI-823-0.00 - Madison, Porter, Valley, Jefferson & Harrison Twp, Scioto Co., OH
Figure 1. County Location Map - Scioto County

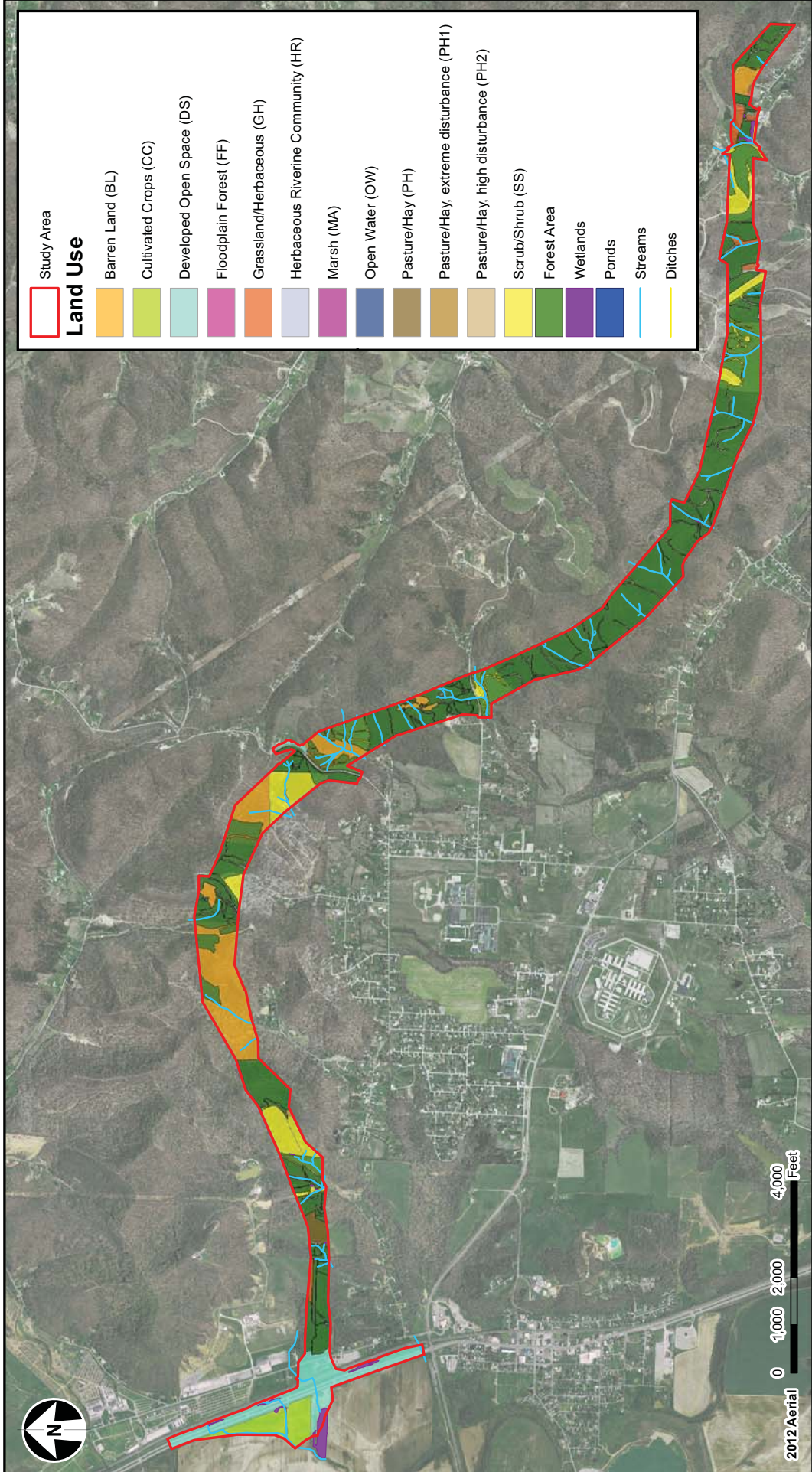




> SCI-823-0.00 - Madison, Porter, Valley, Jefferson & Harrison Twp, Scioto Co., OH
 Figure 2. USGS Topographic Map - New Boston, Minford, Lucasville, & Wheelersburg, OH Quadrangles

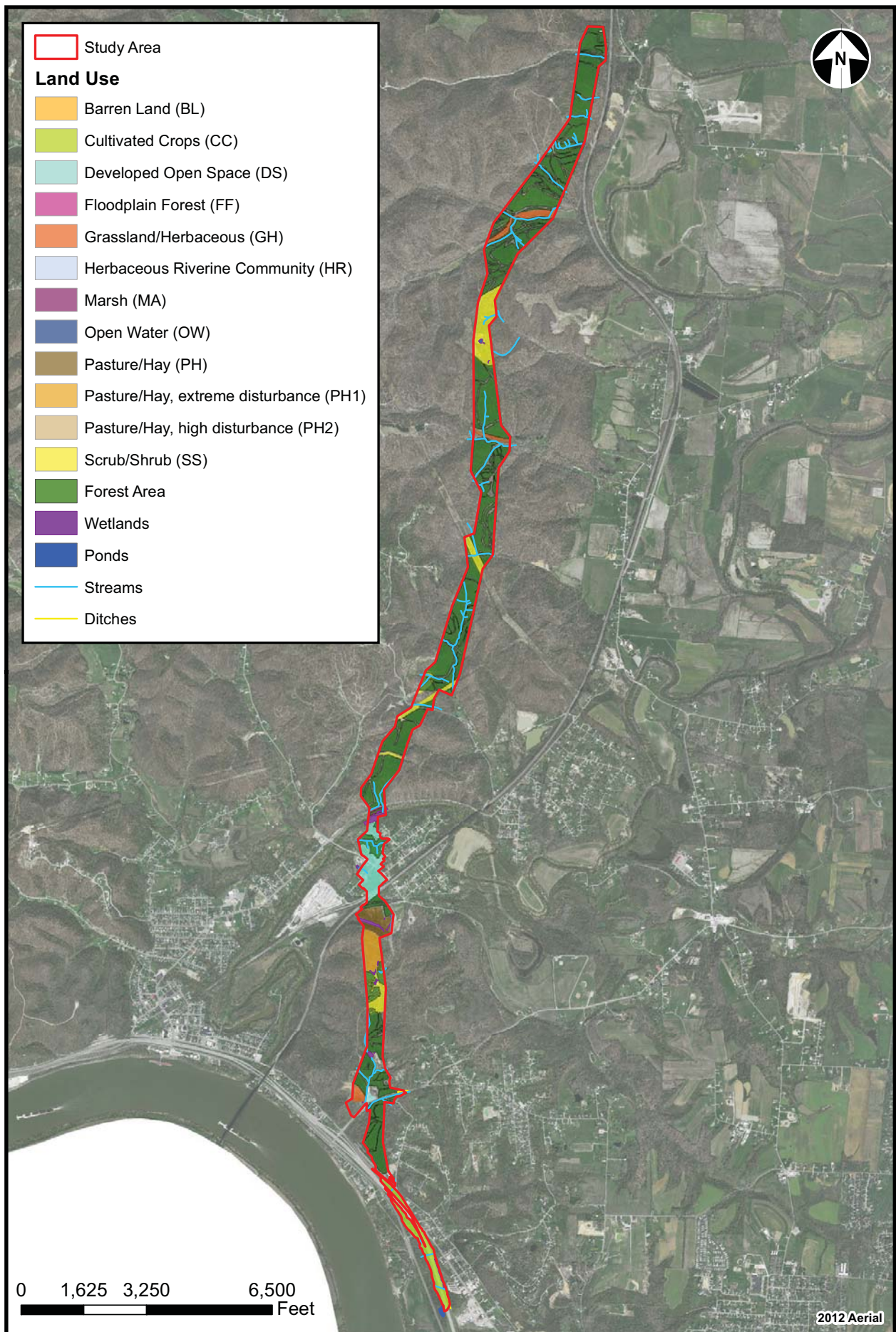






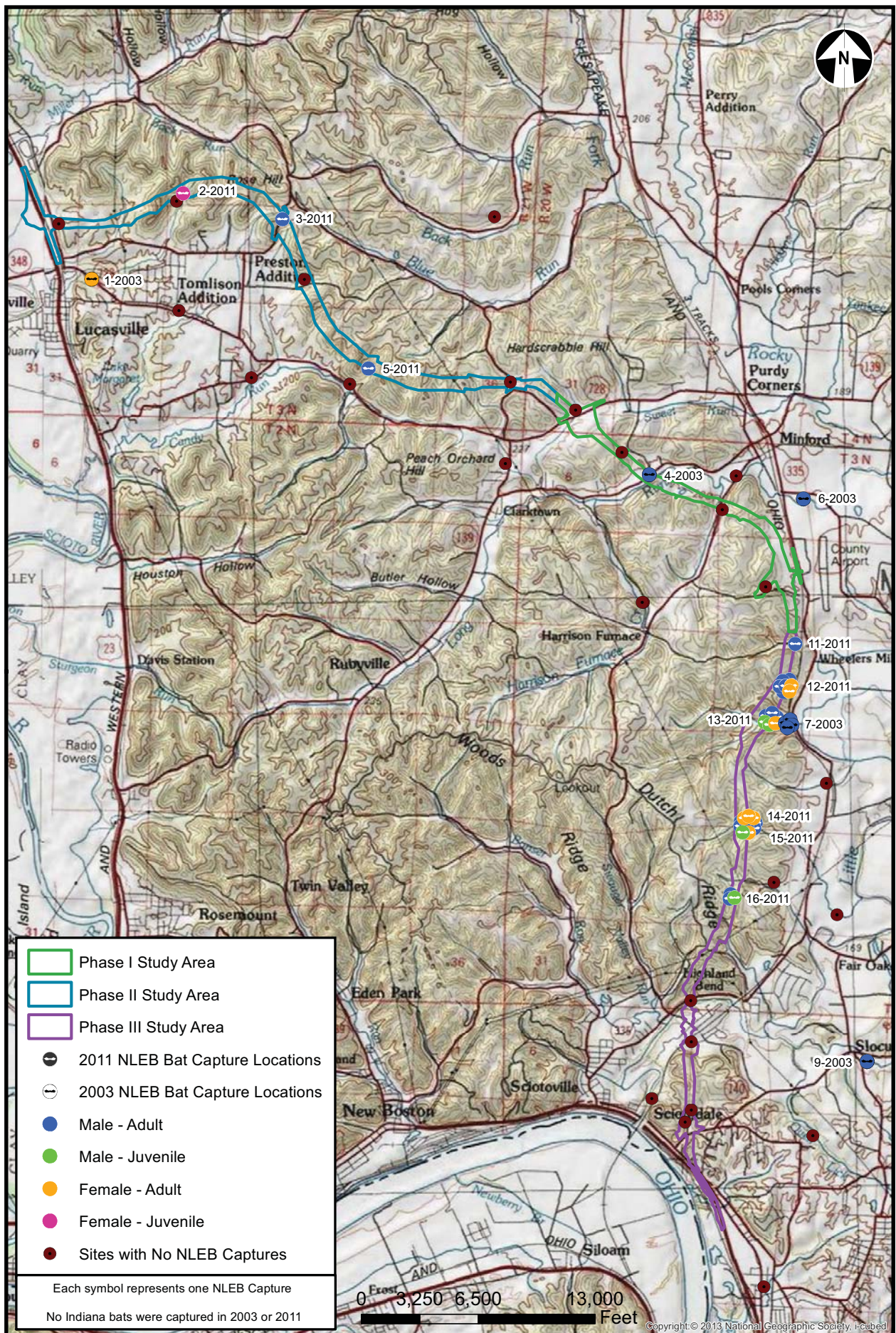
SCI-823-0.00 - Valley & Jefferson Township, Scioto Co., OH
 Figure 3b. Land Use Map - Phase II





> SCI-823-0.00 - Porter & Harrison Township, Scioto Co., OH
 Figure 3c. Land Use Map - Phase III

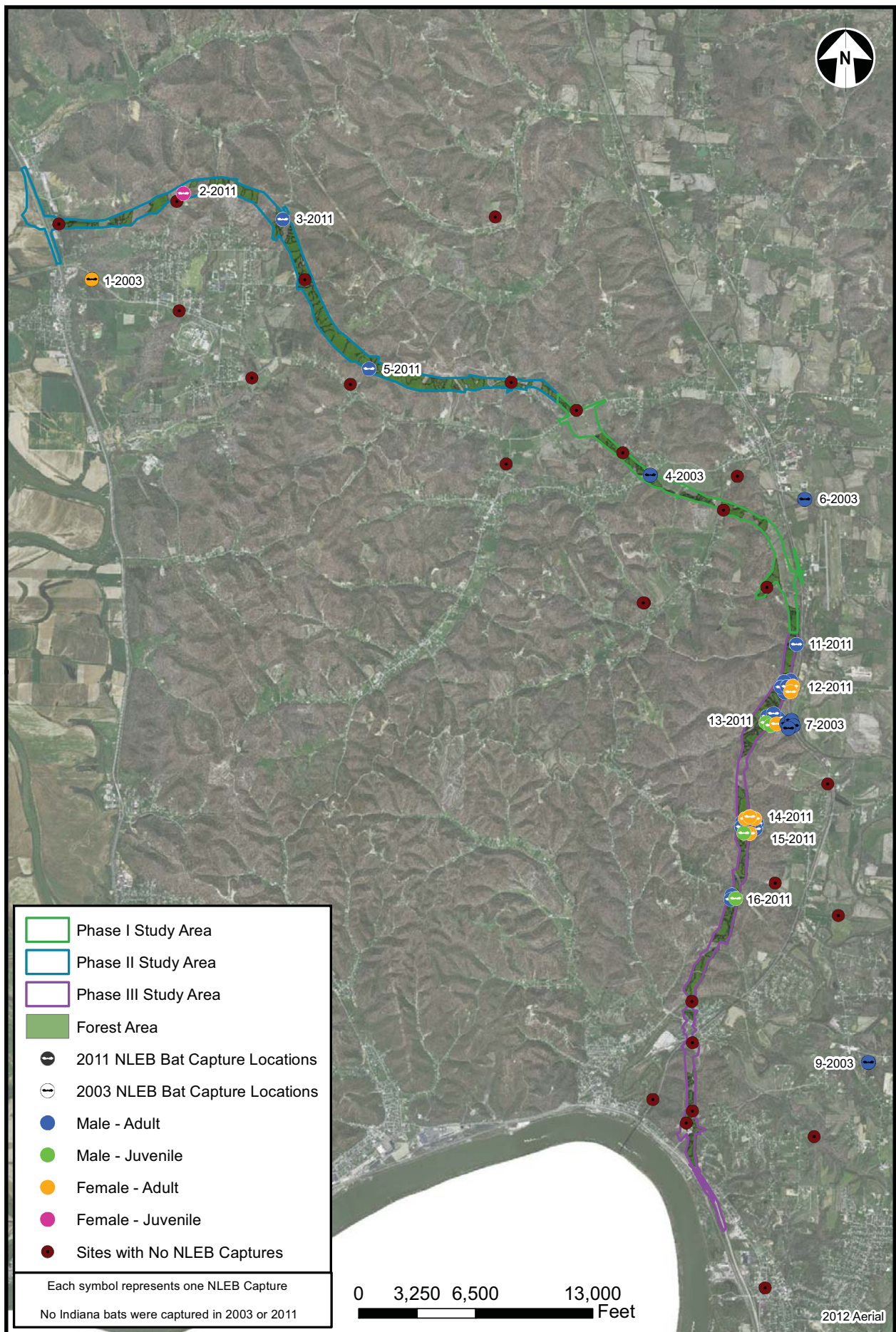




> SCI-823-0.00 - Madison, Porter, Valley, Jefferson & Harrison Twp, Scioto Co., OH

Figure 4. USGS Map - 2011 & 2003 Bat Mist-net Survey Results for Northern Long-Eared Bat Captures - All Phases

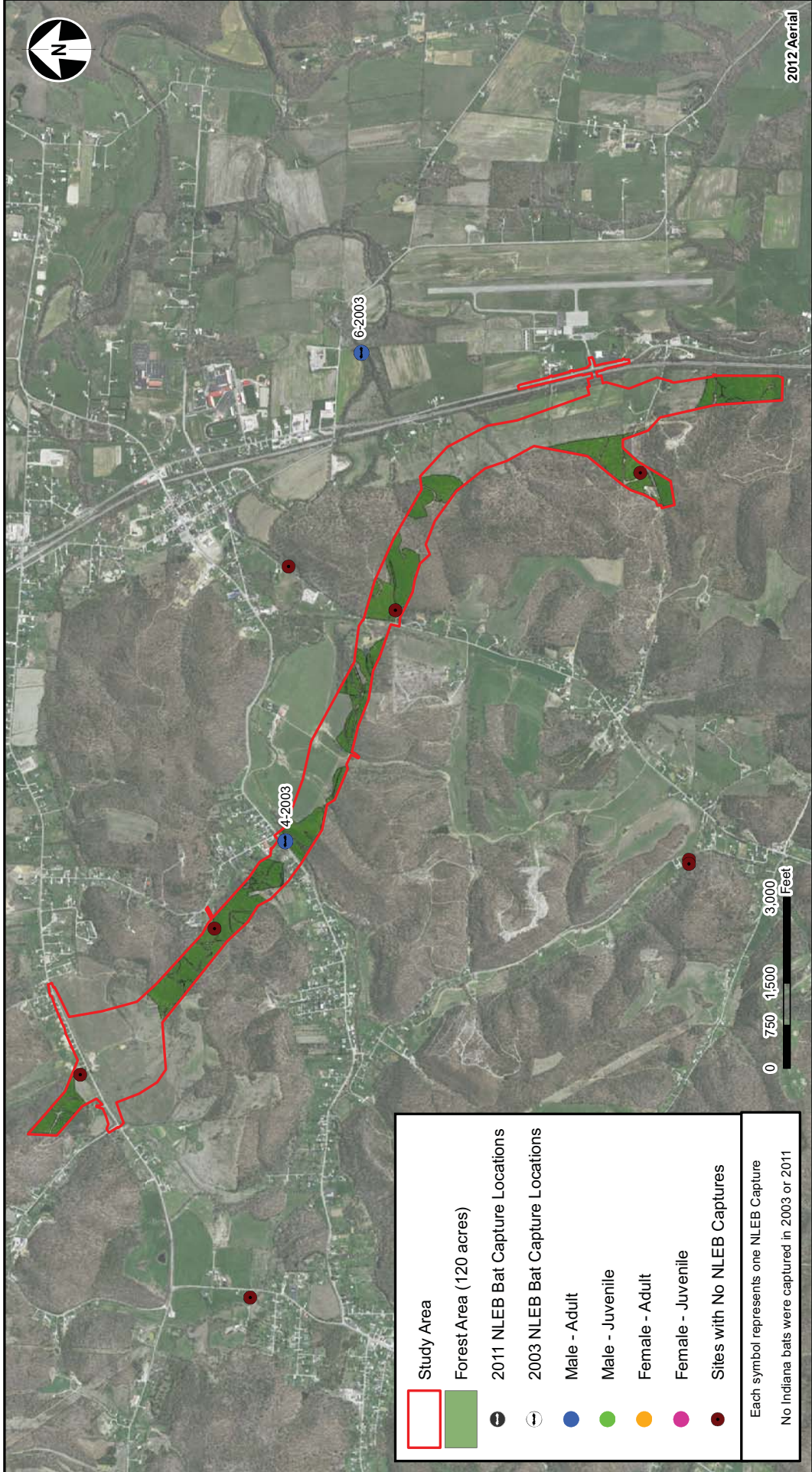




> SCI-823-0.00 - Madison, Porter, Valley, Jefferson & Harrison Twp, Scioto Co., OH

Figure 5a. USGS Map - 2011 & 2003 Bat Mist-net Survey Results for Northern Long-Eared Bat Captures - All Phases

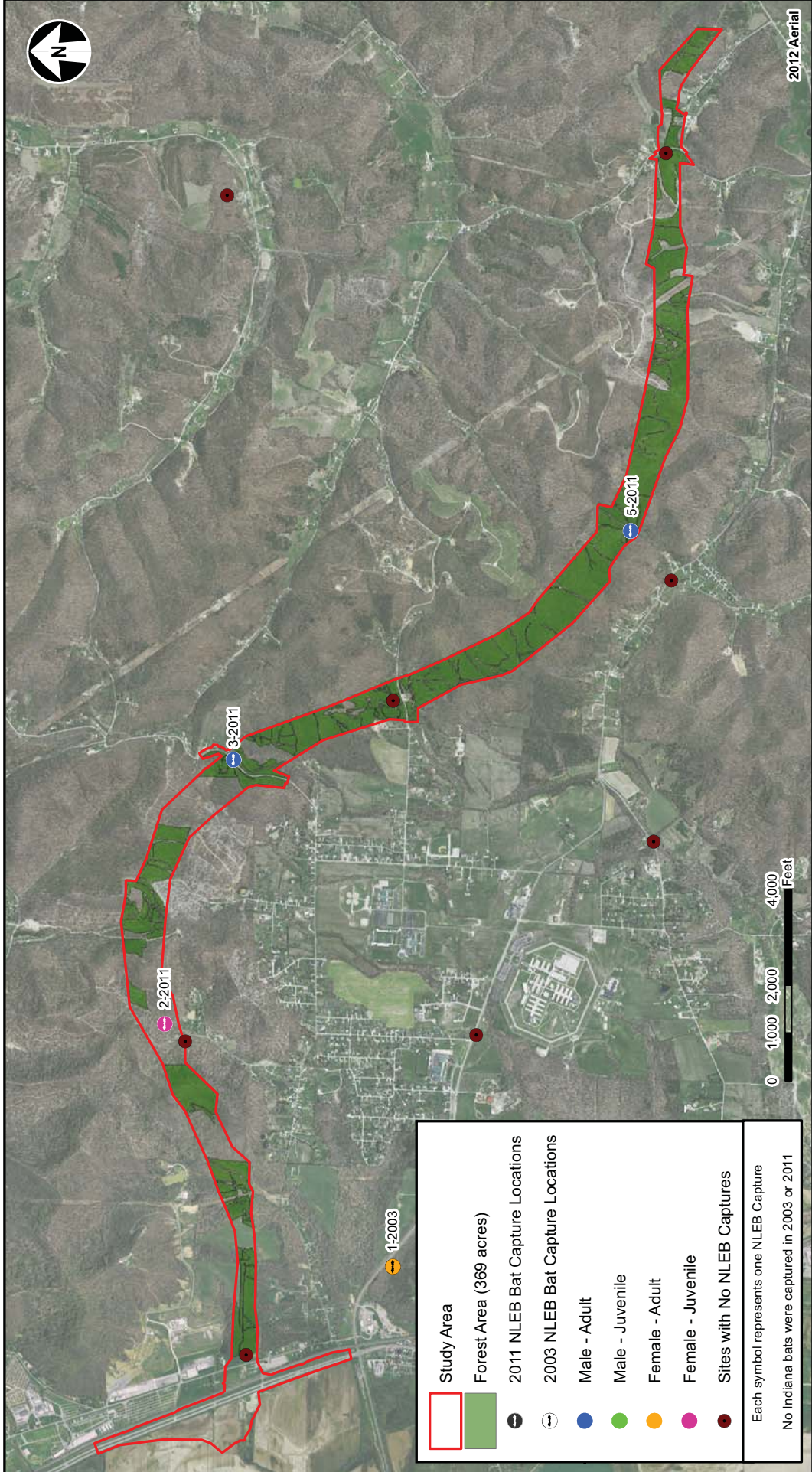




| | |
|---|---------------------------------|
| | Study Area |
| | Forest Area (120 acres) |
| | 2011 NLEB Bat Capture Locations |
| | 2003 NLEB Bat Capture Locations |
| | Male - Adult |
| | Male - Juvenile |
| | Female - Adult |
| | Female - Juvenile |
| | Sites with No NLEB Captures |
| Each symbol represents one NLEB Capture | |
| No Indiana bats were captured in 2003 or 2011 | |

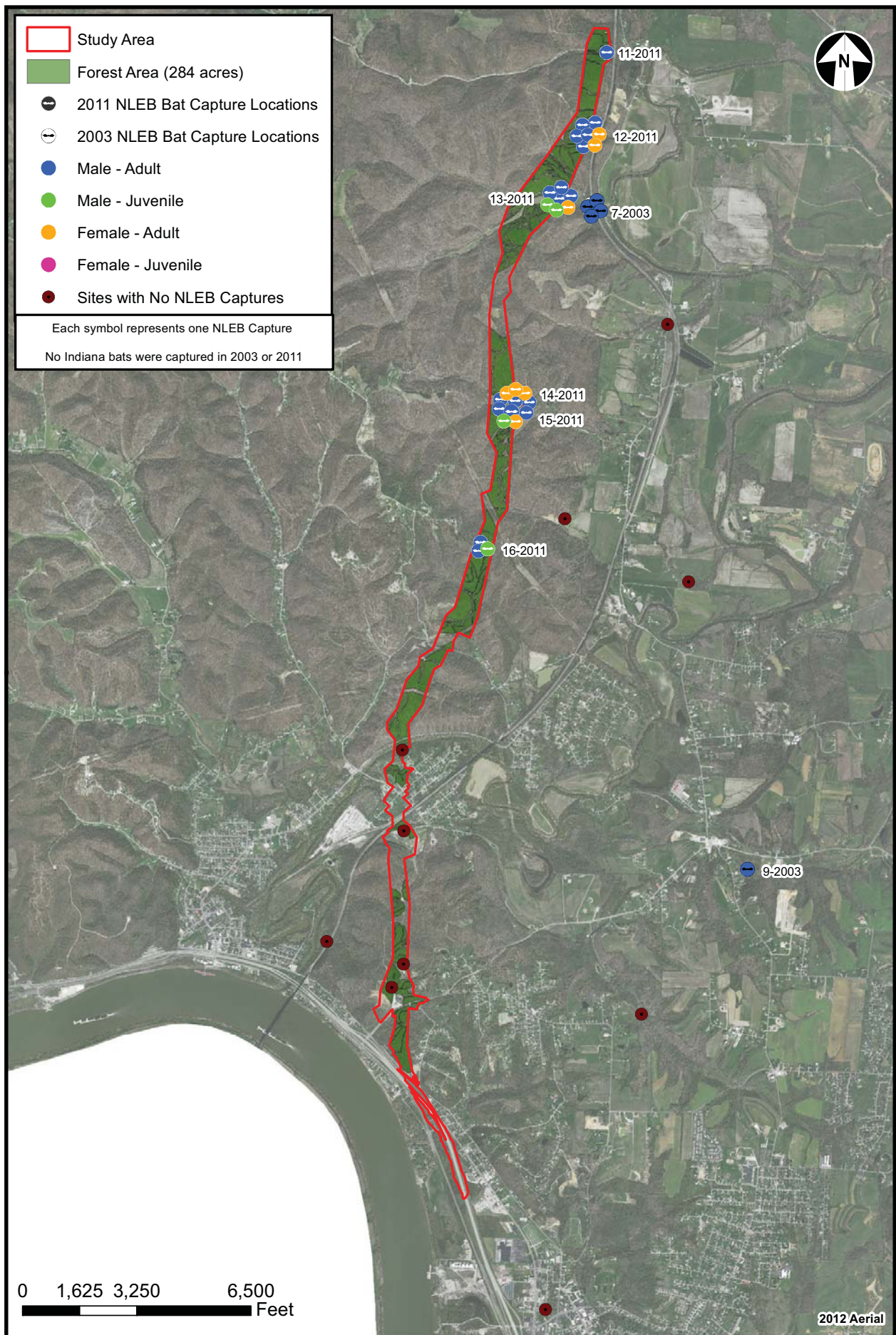
SCI-823-0.00 - Madison & Harrison Township, Scioto Co., OH
 Figure 5b. 2011 & 2003 Bat Mist-net Survey Results for Northern Long-Eared Bat Captures - Phase I





SCI-823-0.00 - Valley & Jefferson Township, Scioto Co., OH
 Figure 5c. 2011 & 2003 Bat Mist-net Survey Results for Northern Long-Eared Bat Captures - Phase II

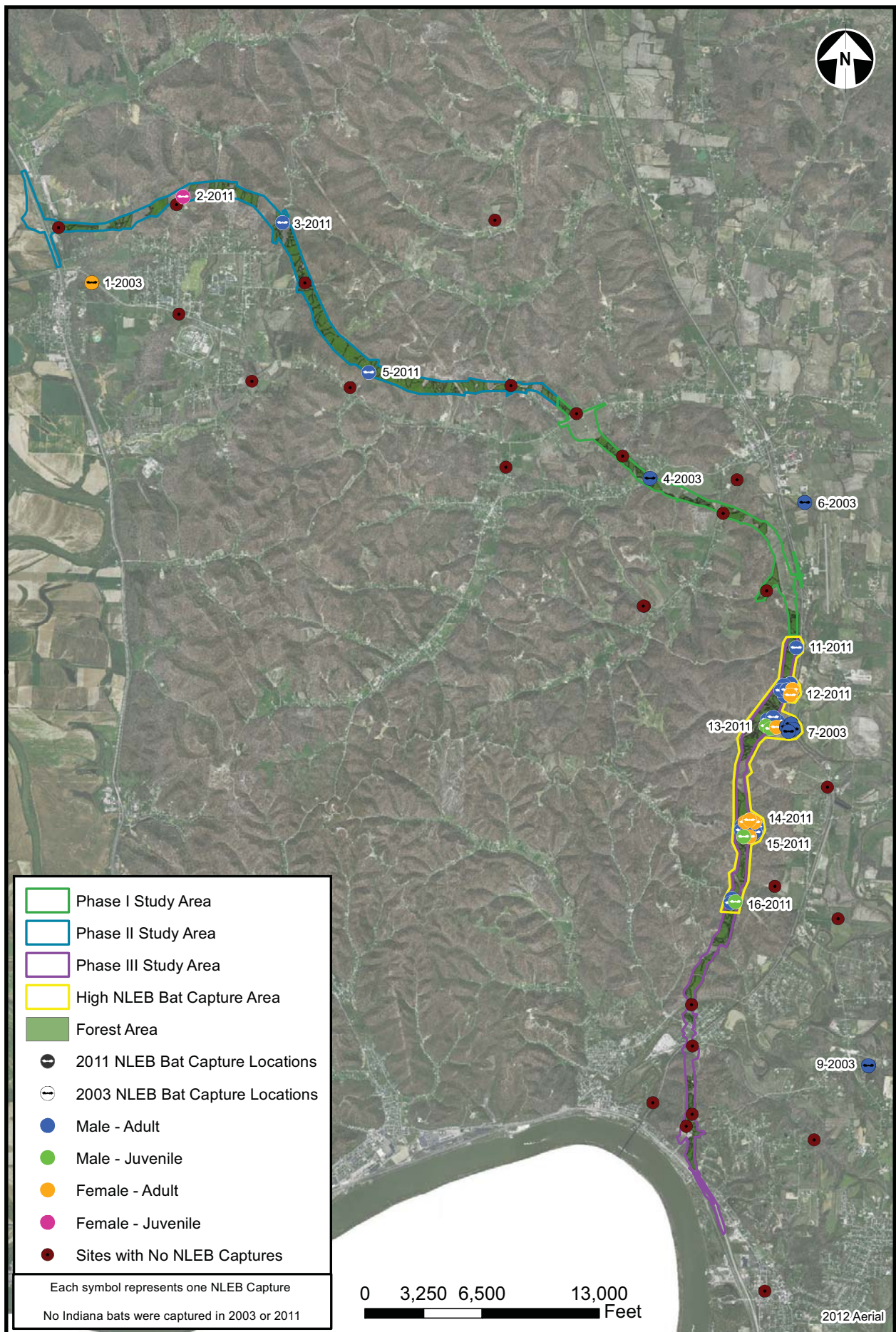




> SCI-823-0.00 - Porter & Harrison Township, Scioto Co., OH

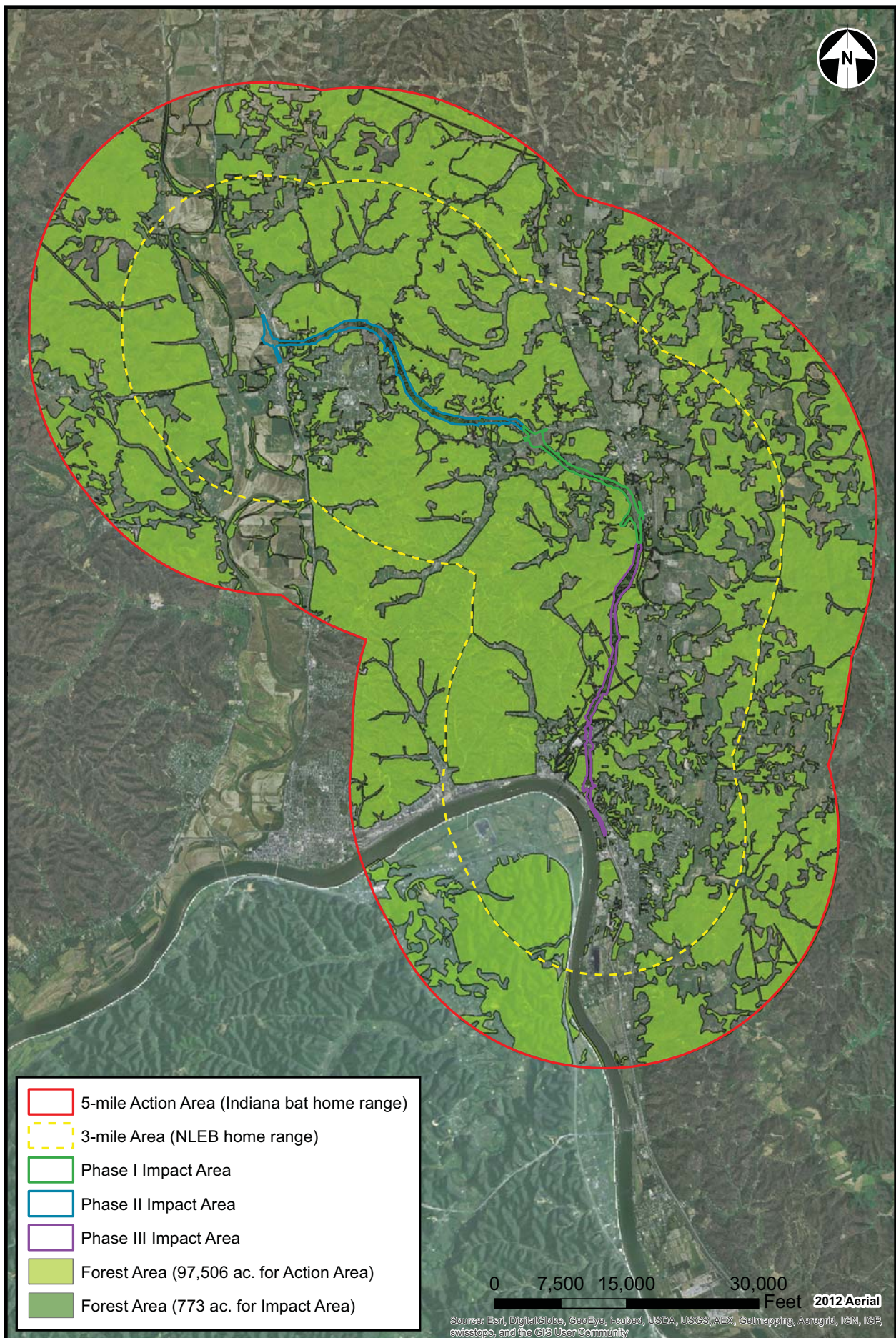
Figure 5d. 2011 & 2003 Bat Mist-net Survey Results for Northern Long-Eared Bat Captures - Phase III





> SCI-823-0.00 - Madison, Porter, Valley, Jefferson & Harrison Twp, Scioto Co., OH
 Figure 5e. USGS Map - 2011 & 2003 Bat Mist-net Survey Results for NLEB Captures - All Phases

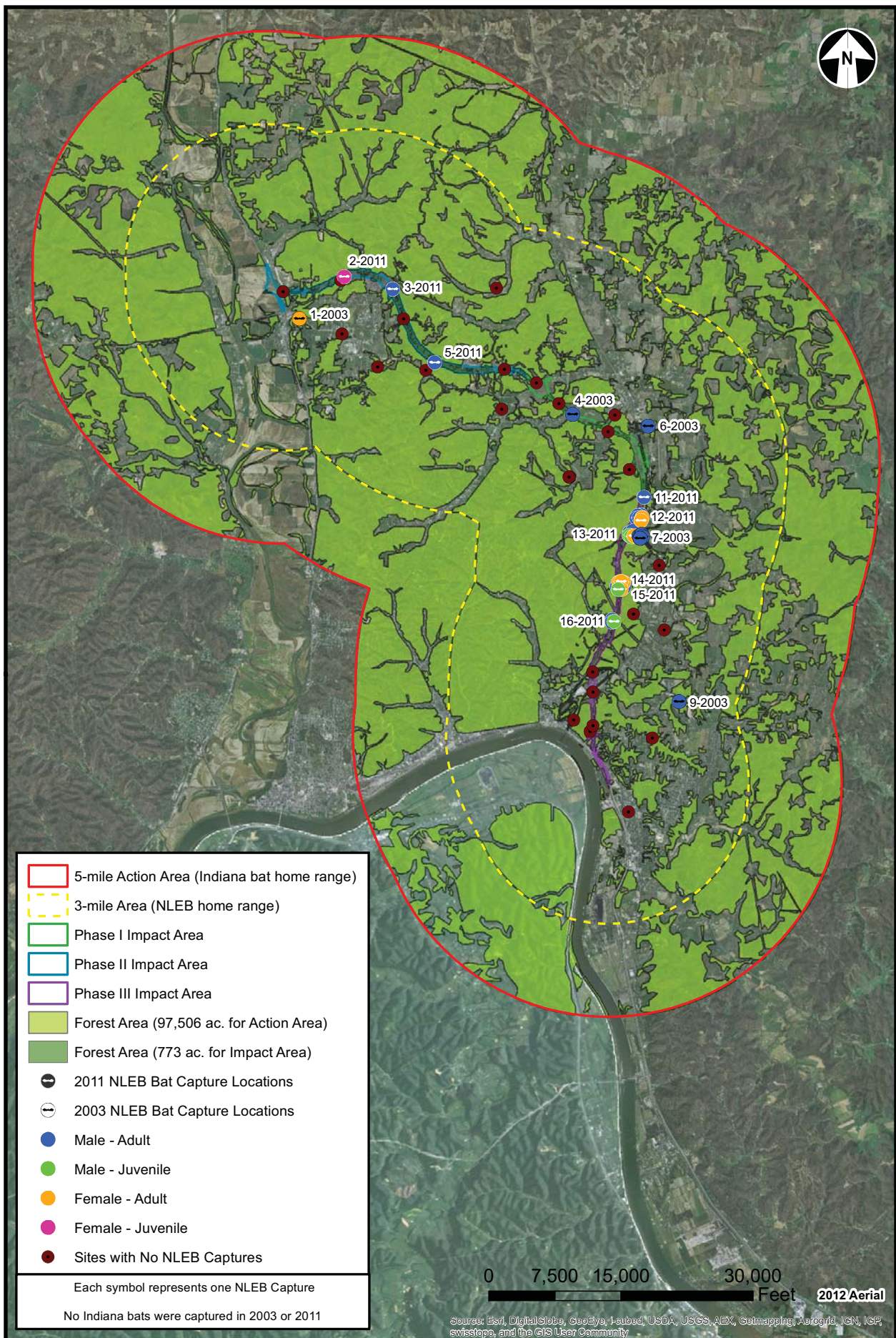




> SCI-823-0.00 - Madison, Porter, Valley, Jefferson & Harrison Twp, Scioto Co., OH

Figure 6a. Action Area and Impact Area for All Phases

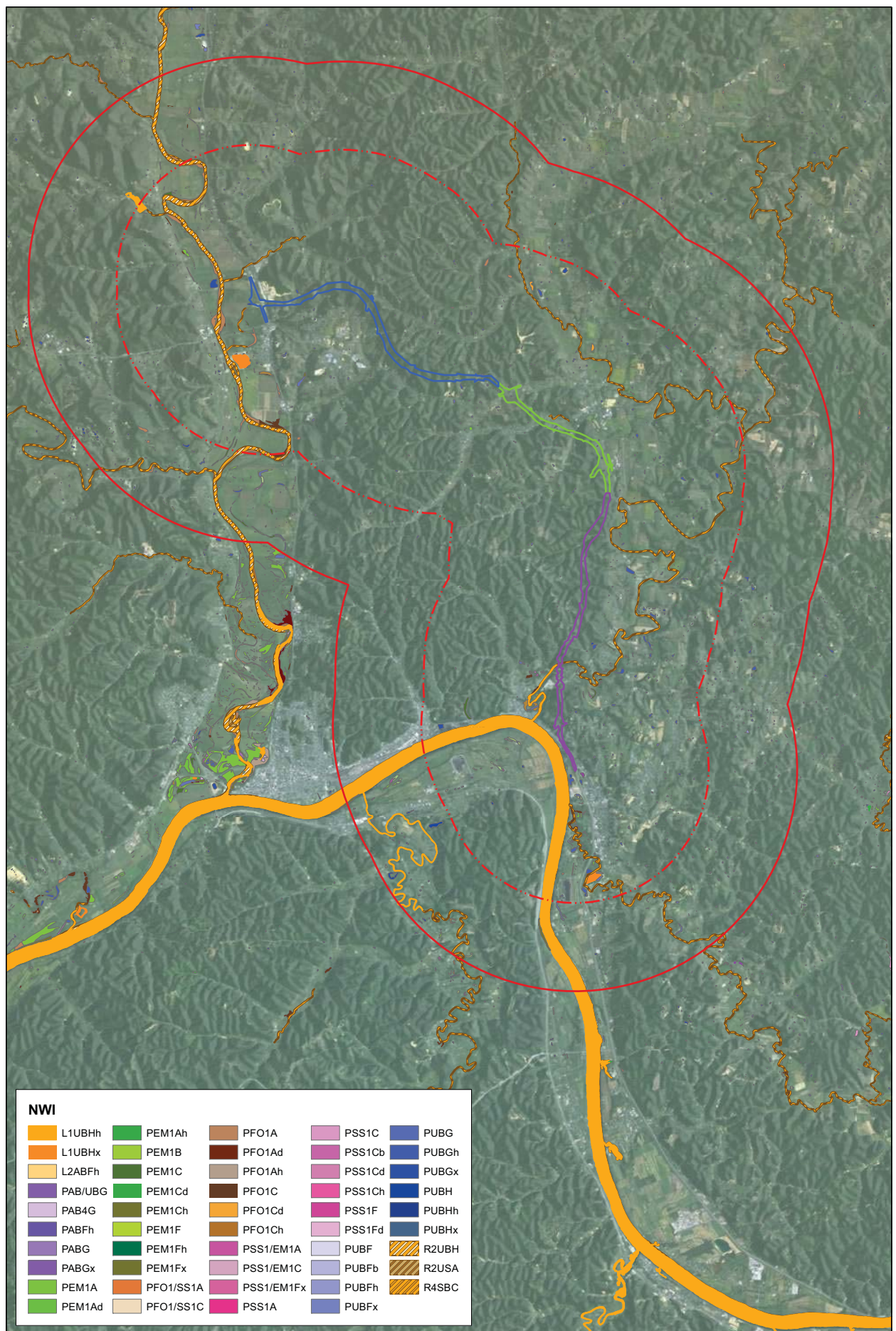




> SCI-823-0.00 - Madison, Porter, Valley, Jefferson & Harrison Twp, Scioto Co., OH

Figure 6b. 2011 & 2003 Bat Mist-net Survey Results for NLEB Captures - Action Area and Impact Area for All Phases





NWI

| | | | | |
|---------|-----------|------------|--------|-------|
| L1UBHh | PEM1Ah | PFO1A | PSS1C | PUBG |
| L1UBHx | PEM1B | PFO1Ad | PSS1Cb | PUBGh |
| L2ABFh | PEM1C | PFO1Ah | PSS1Cd | PUBGx |
| PAB/UBG | PEM1Cd | PFO1C | PSS1Ch | PUBH |
| PAB4G | PEM1Ch | PFO1Cd | PSS1F | PUBHh |
| PABFh | PEM1F | PFO1Ch | PSS1Fd | PUBHx |
| PABG | PEM1Fh | PSS1/EM1A | PUBF | R2UBH |
| PABGx | PEM1Fx | PSS1/EM1C | PUBFb | R2USA |
| PEM1A | PFO1/SS1A | PSS1/EM1Fx | PUBFh | R4SBC |
| PEM1Ad | PFO1/SS1C | PSS1A | PUBFx | |

Figure 7. NWI Map of Action Areas for All Phases, Scioto and Greenup Counties, Ohio and Kentucky.

| | | | |
|-------------------------------------|-----------------------|--------------------|--|
| Indiana Bat Action Area | Phase I Impact Area | 2 1 0 2 Miles | |
| Northern Long-Eared Bat Action Area | Phase II Impact Area | 4 2 0 4 Kilometers | |
| | Phase III Impact Area | | |



Basemap courtesy of ESRI (Microsoft 2011).