

Bryan Parsell

From: dwoeste@aep.com
Sent: Thursday, December 08, 2011 9:14 AM
To: Dearnell, Lori
Cc: jrheppner@aep.com; rossbkendall@gmail.com
Subject: SCI-823-Ph3: Portsmouth Bypass Transmission Line Crossing Part 1 of 2
Attachments: Span Crossing Maps.pdf; PnPs(part1).pdf

Lori,

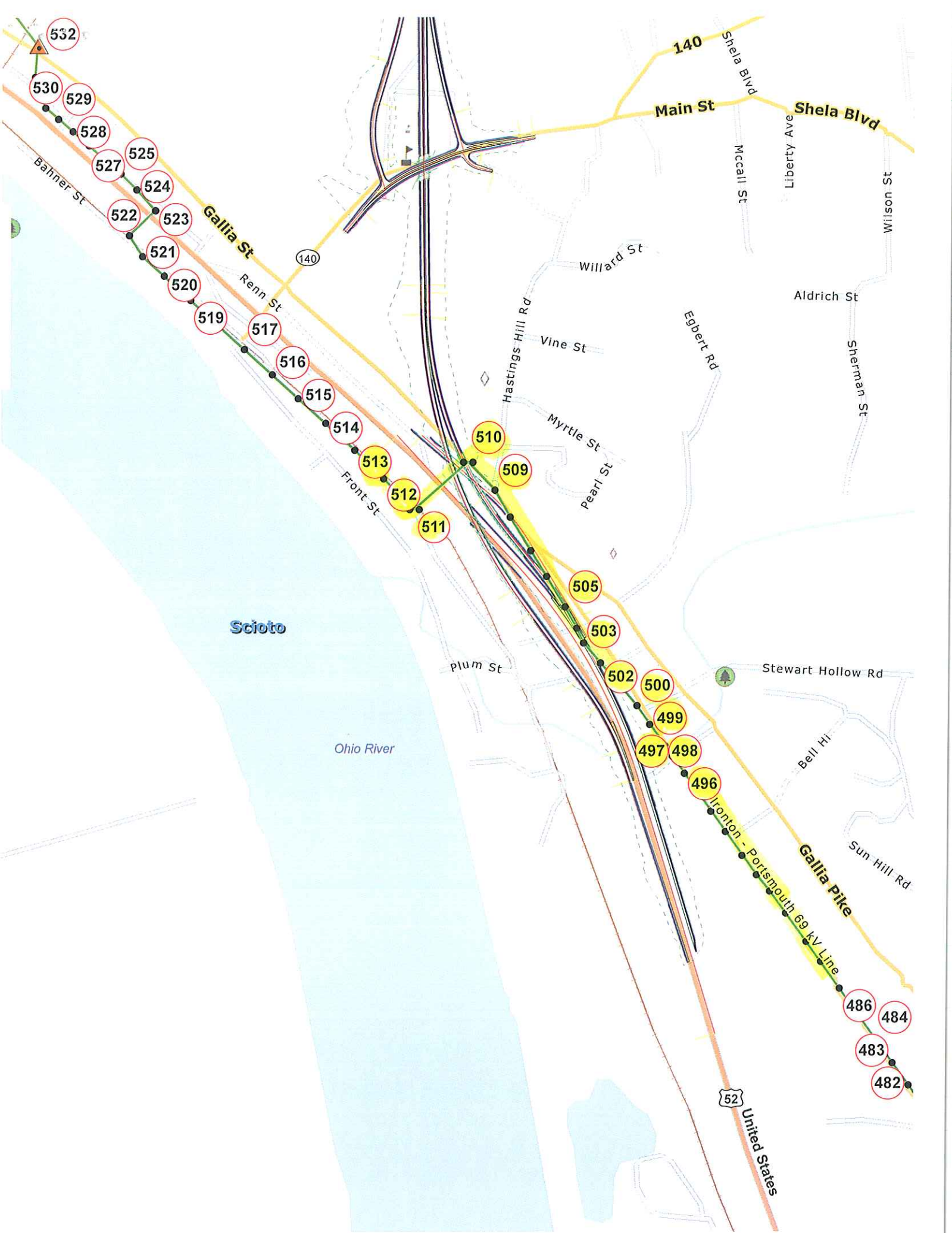
After briefly reviewing the elevations on the only profile drawing that we received (sta. 202+00 to sta. 214+50) and cross checking it to the clearance that is required, it appears that this particular span will most likely meet clearance. I would like for you to confirm this as I was only able to interpret the location of the proposed roadway based on the topography of the span.

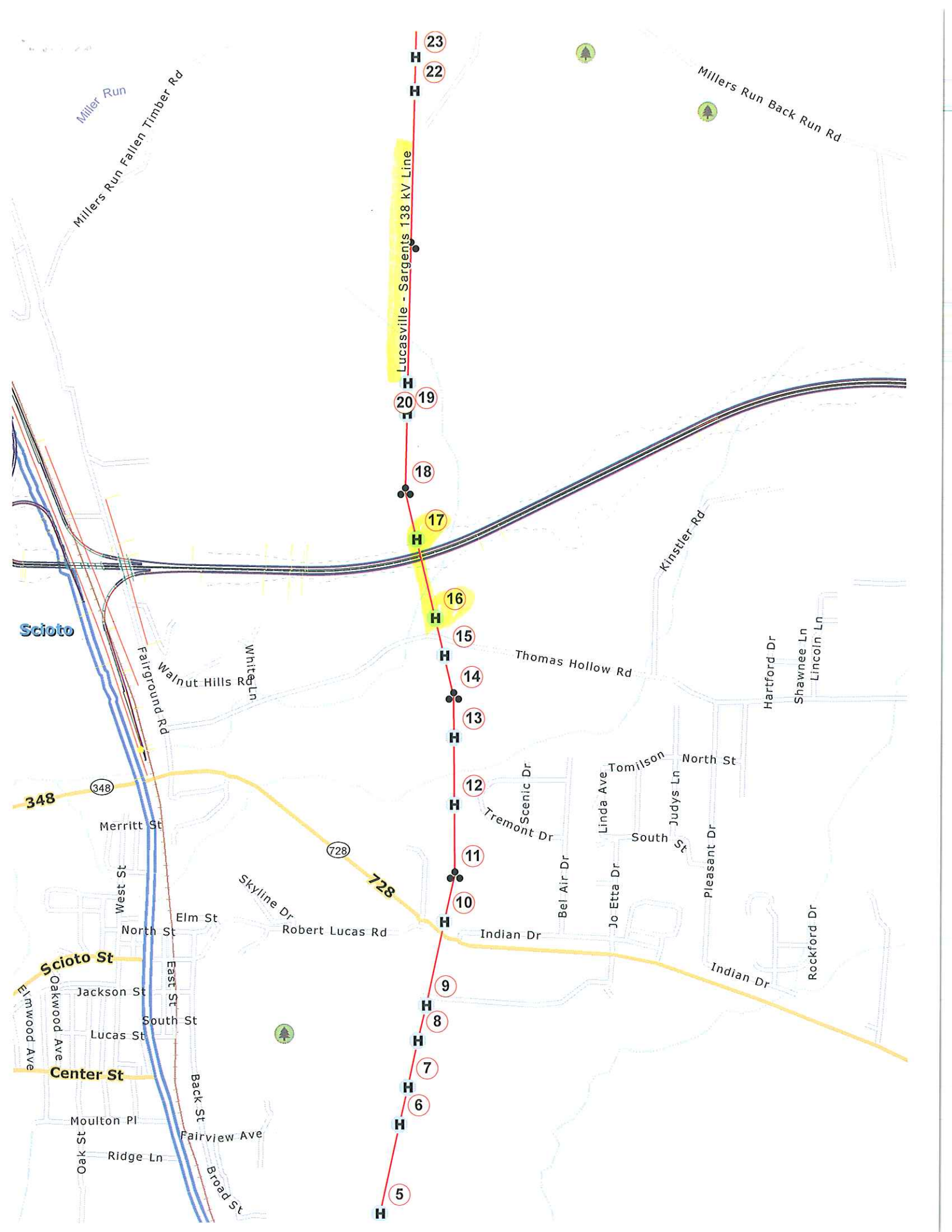
I have attached plan and profile drawings for each of the spans that cross your planned route for the bypass. These drawings each have their respective clearance line drawn on them as required by the NESC code (as well as necessary electrostatic clearances in the case of the 765 kV line). Additionally, more detail is needed regarding the last leg of the bypass by Sciotodale. As you can see from the attached drawing there is a lot of potential congestion/conflict with numerous poles on the Ironton - Portsmouth 69kV Line.

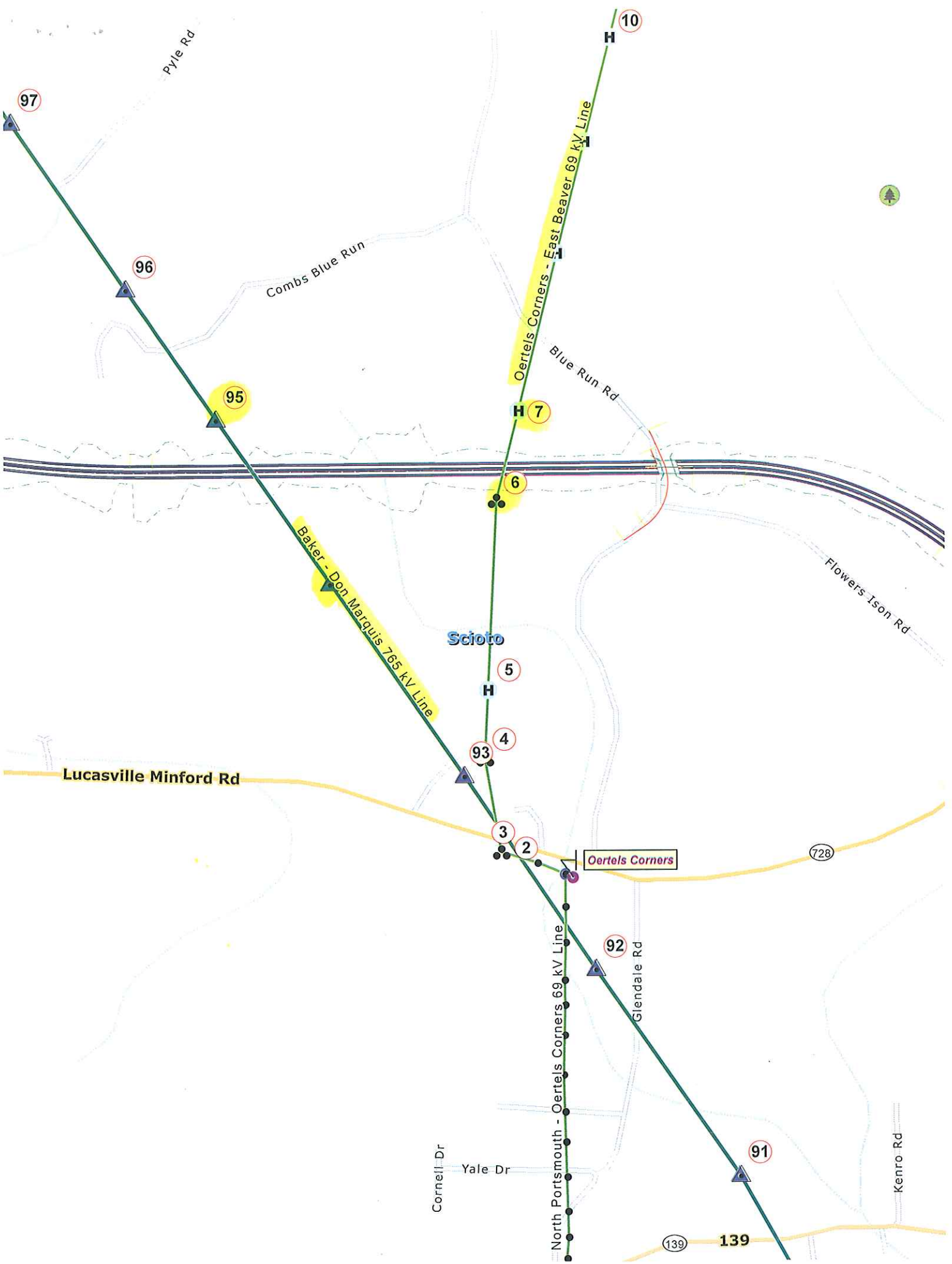
Please review all of the crossings in question and check them to your proposed profiles. I would be more than happy to look at these in further detail with you and discuss ways to mitigate any issues that arise. If you are unable to read any elevations on these drawings or need anything else from me do not hesitate to contact myself or John Heppner.

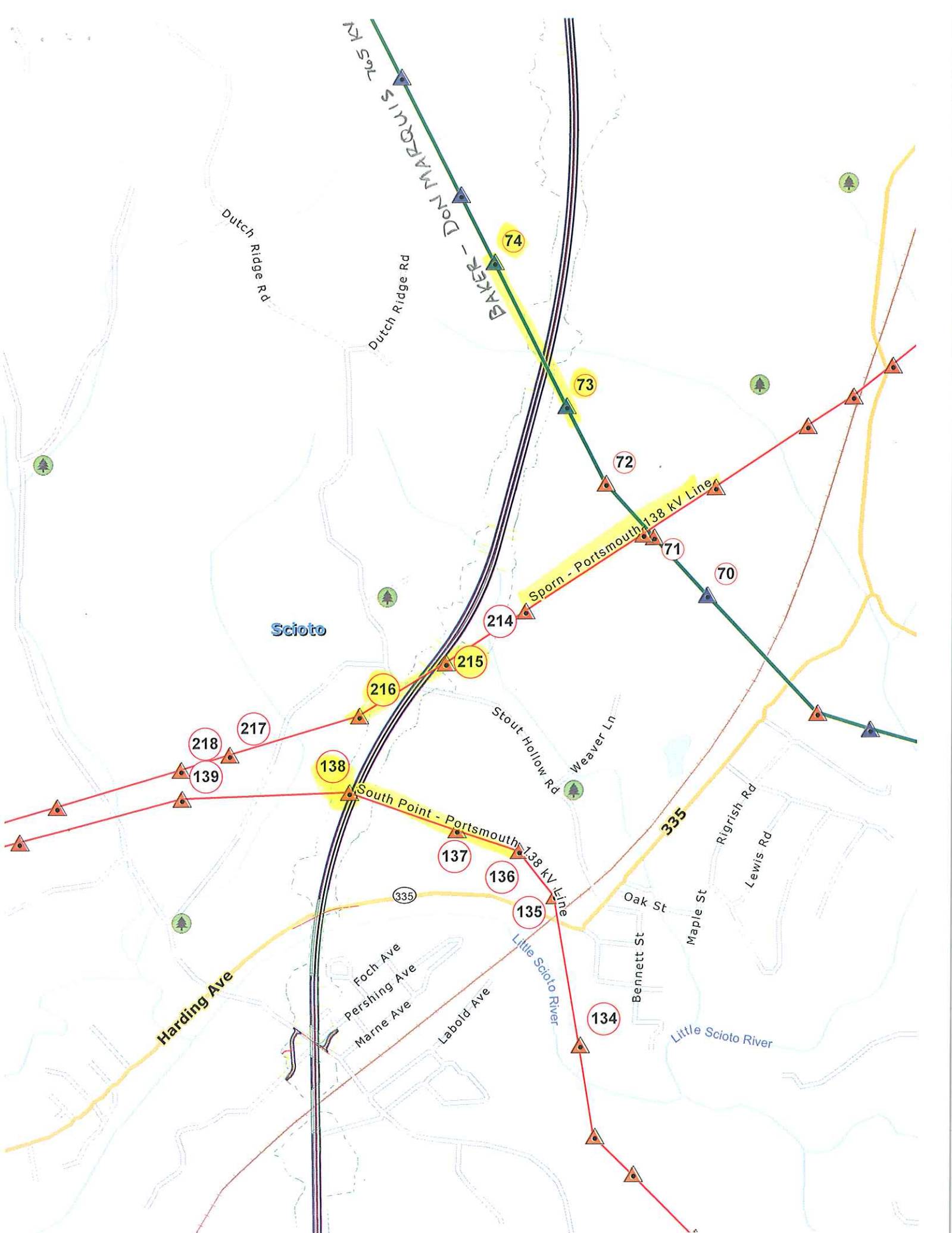
Thank you,

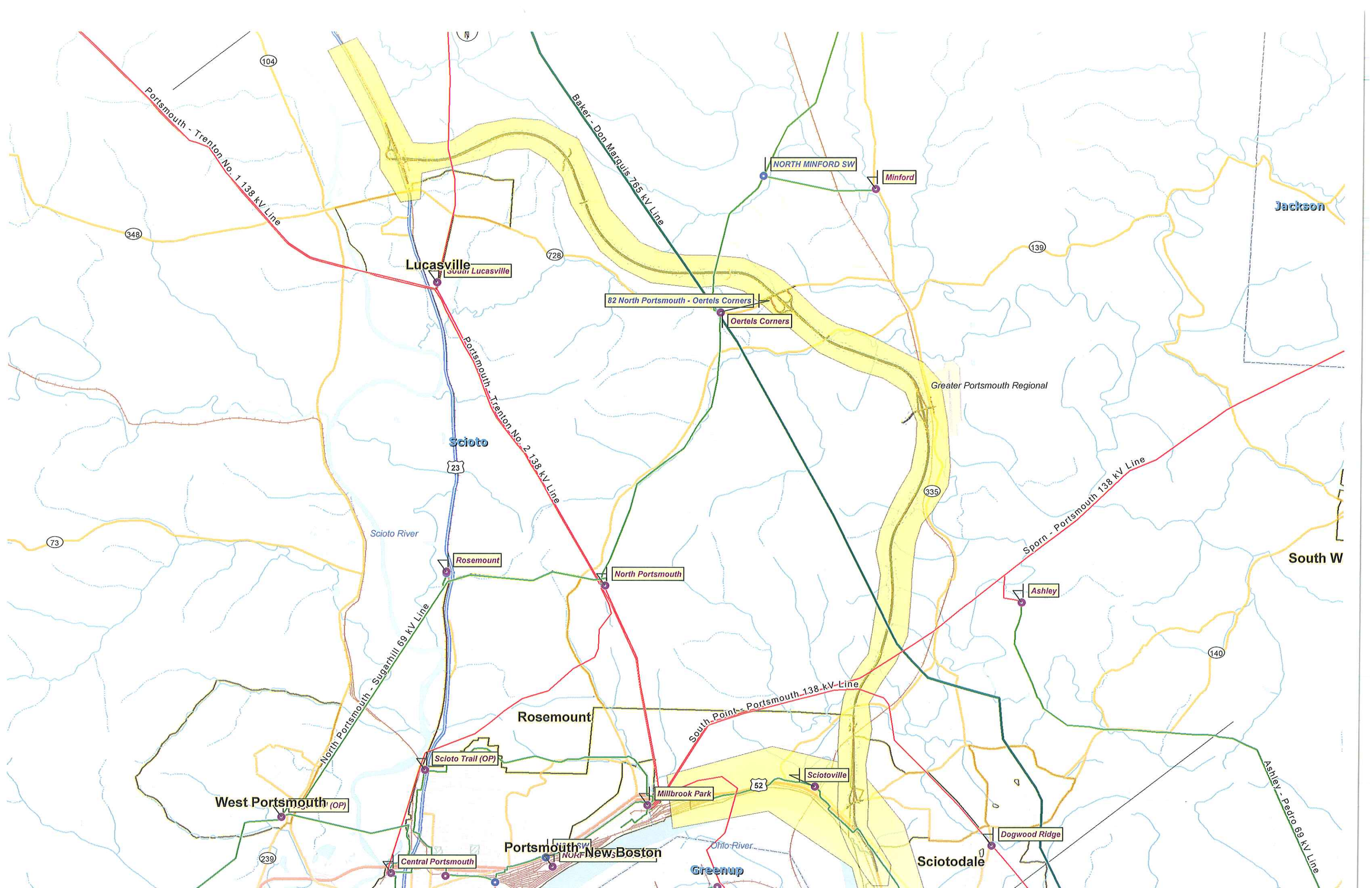
Dan Woeste
AEP Transmission Line Engineering
700 Morrison Road
Gahanna, Ohio 43230
910-1391
(614)-552-1391
dwoeste@aep.com











Portsmouth - Trenton No. 1 138 kV Line

Baker - Don Marguis 765 kV Line

Lucasville

NORTH MINFORD SW

Minford

82 North Portsmouth - Oertels Corners

Oertels Corners

Portsmouth - Trenton No. 2 138 kV Line

Scioto

Greater Portsmouth Regional

Sporn - Portsmouth 138 kV Line

Rosemount

North Portsmouth

Jackson

South W

73

23

335

140

Rosemount

South Point - Portsmouth 138 kV Line

West Portsmouth (OP)

Scioto Trail (OP)

Millbrook Park

Sciotoville

Portsmouth New Boston

Greenup

Scioto Dale

Dogwood Ridge

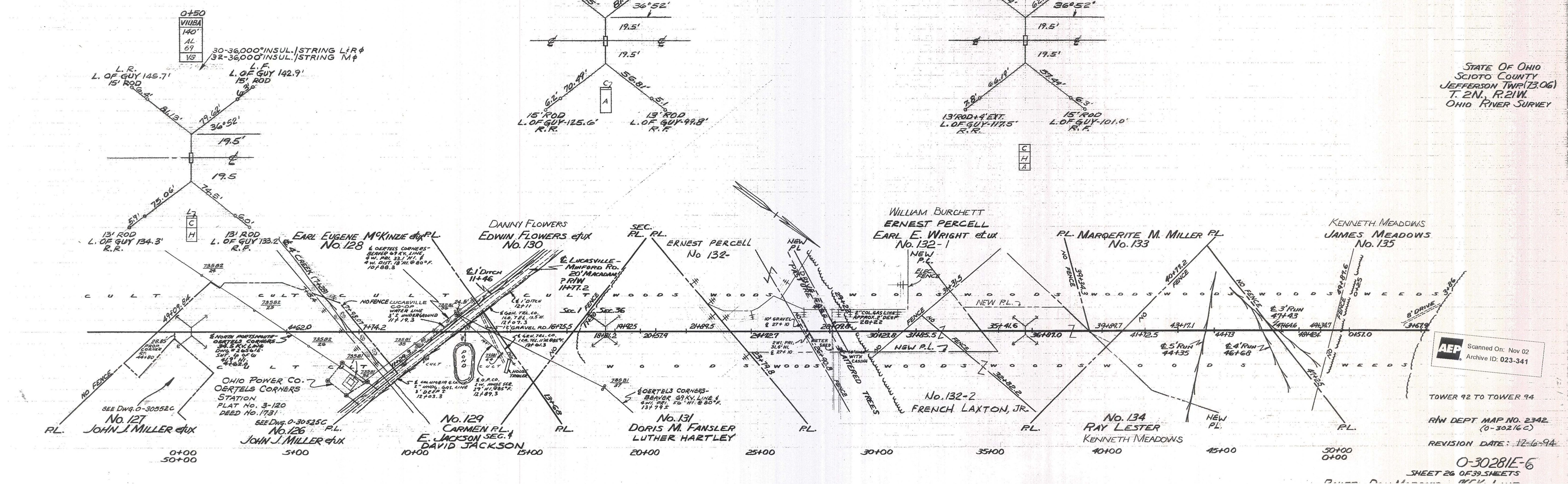
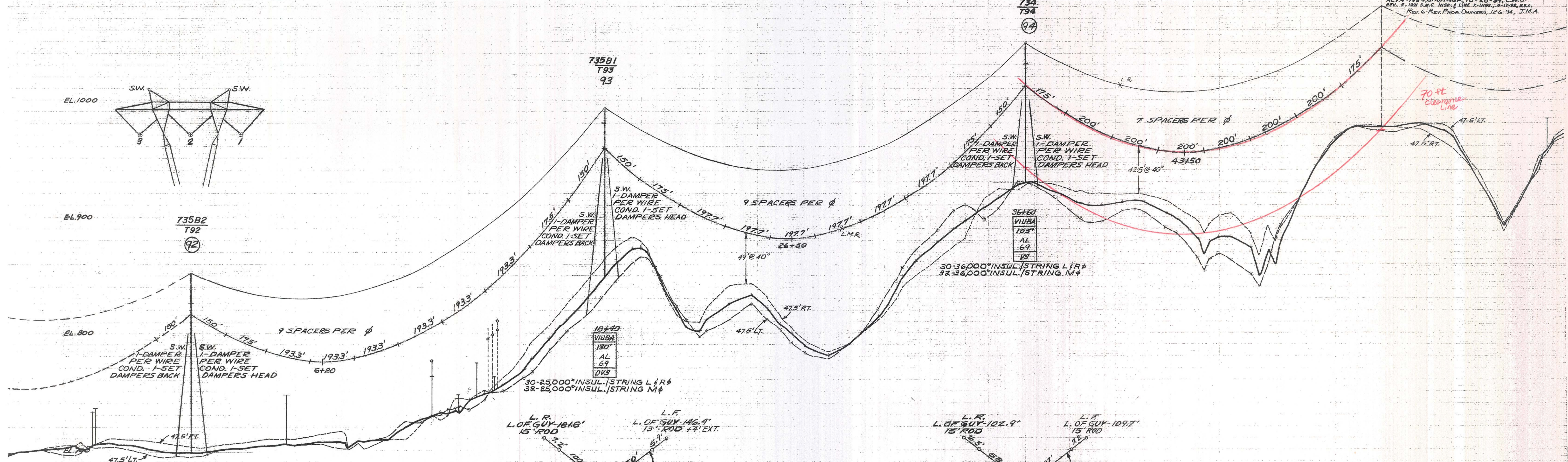
Ashley - Pedro 69 kV Line

239

52

Ohio River

REV 1-REV AFTER CONSTRUCTION 6-9-75 TLB
 REV 2-REV QUM INP 10-18-82 T.L.D.
 REV 3-ADDED TRAILER 141 18.2 112.2 FT. 2-4-86 T.L.D.
 REV 4-1987 S.M.C. INSUL. & LINE X-INGS, 8-17-87, C.M.C.
 REV 5-1991 S.M.C. INSUL. & LINE X-INGS, 8-17-91, B.S.A.
 REV 6-Rev. From Owners, 12-6-94, J.M.A.



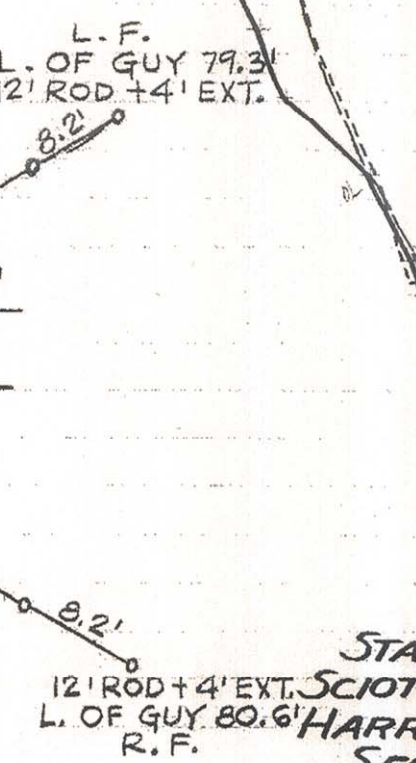
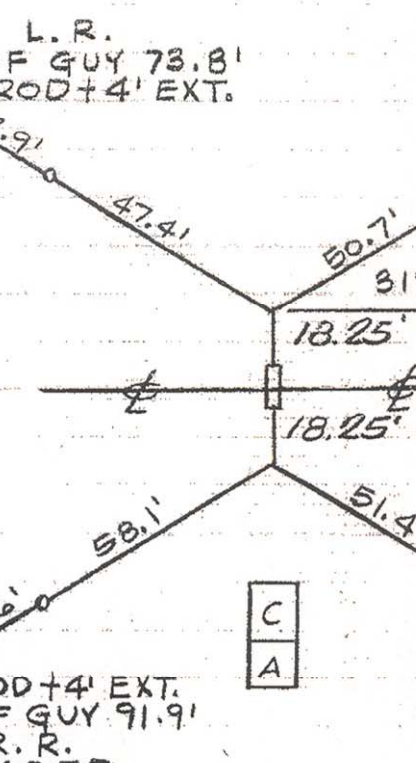
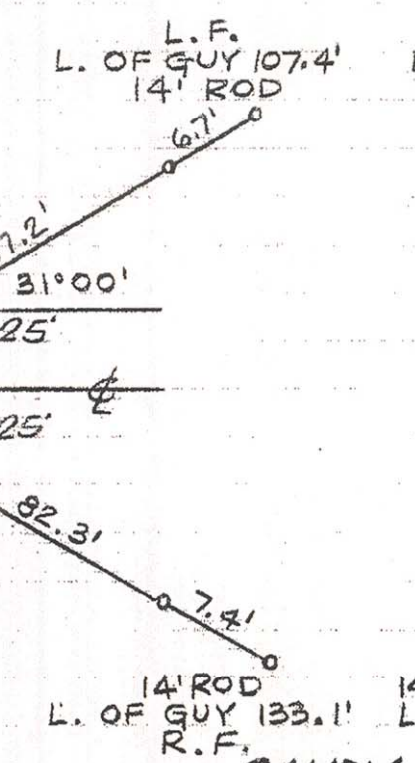
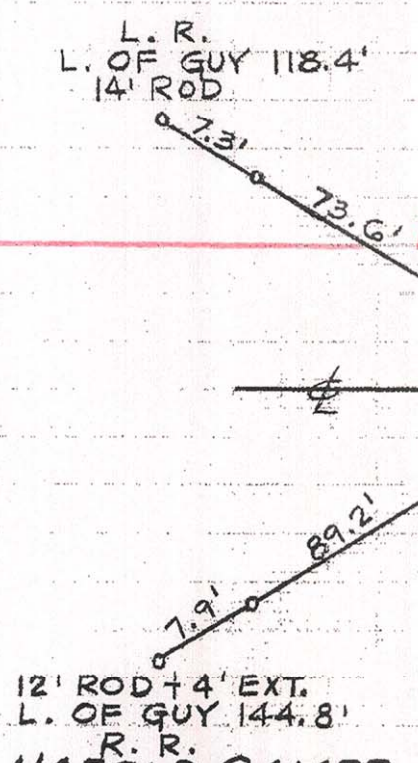
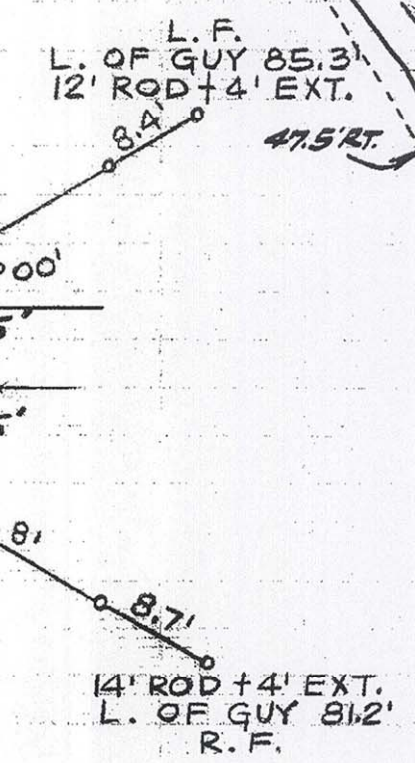
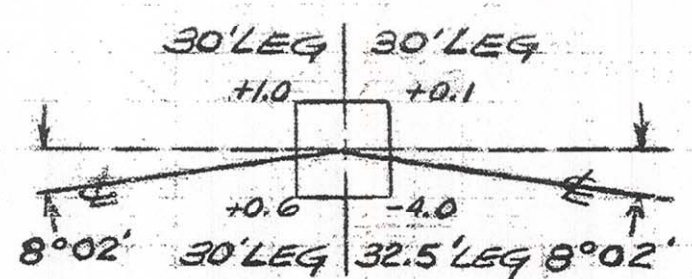
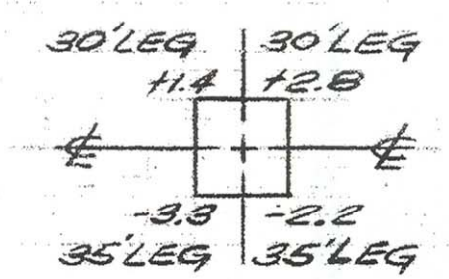
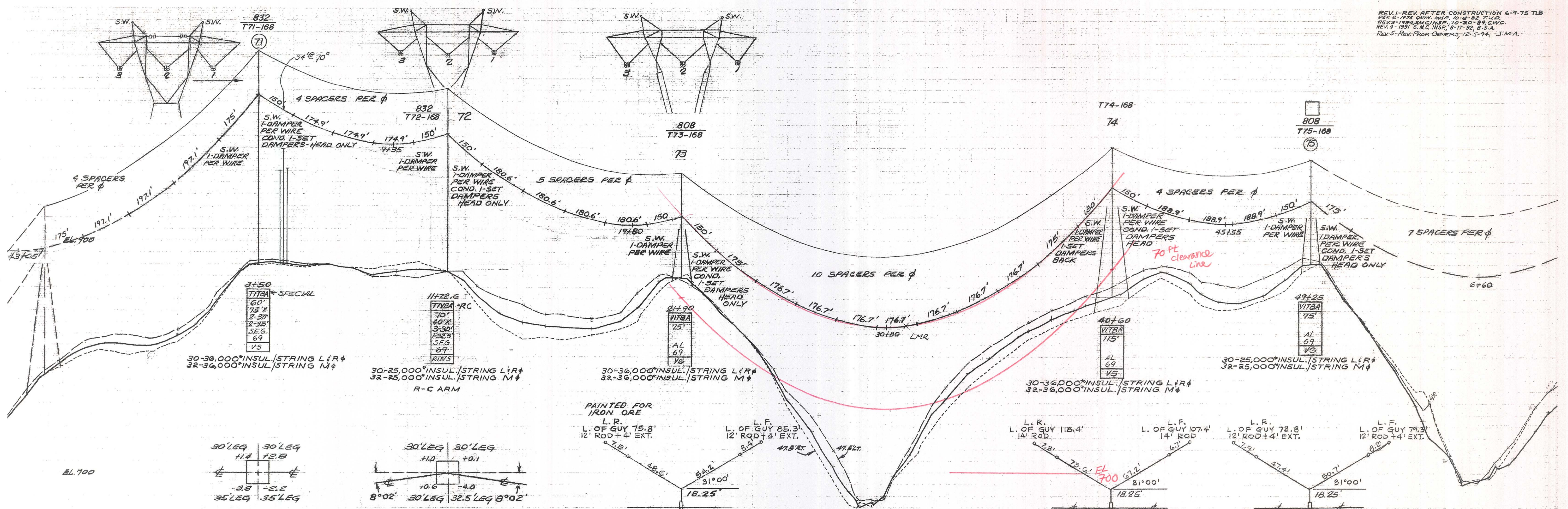
STATE OF OHIO
 SCIOTO COUNTY
 JEFFERSON TWP (T3.06)
 T. 2N., R. 21W.
 OHIO RIVER SURVEY

Scanned On: Nov 02
 Archive ID: 023-341

TOWER 92 TO TOWER 94
 R/W DEPT MAP NO. 2342
 (0-30216C)
 REVISION DATE: 12-6-94

0-30281E-6
 SHEET 26 OF 39 SHEETS

REV. 1-REV AFTER CONSTRUCTION 6-9-75 TIB
 REV. 2-1975 QUIN. MAP. 10-8-83 T.J.D.
 REV. 3-1984 S.M.C. INSP. 10-20-89 C.W.C.
 REV. 4-1991 S.M.C. INSP. 8-17-92 B.S.A.
 REV. 5-Rev. FROM OWNERS 12-5-94 J.M.A.



STATE OF OHIO
 SCIO COUNTY
 HARRISON TWP (13.05)
 SEC. 28
 T. 3N., R. 20W.
 OHIO RIVER SURVEY

WILLIAM BRYAN et al
 No. 95

HAROLD GAMPP
 LOWELL GAMPP et al
 No. 96

SANDY RADER
 CONRAD D. TREADWAY et al
 No. 97

No. 92 & 94
 DAVE B. WILLIAMS et al
 HAROLD WILLIAMS

No. 98
 Wm. E. CORIELL et al
 LYNN R. WESSEL

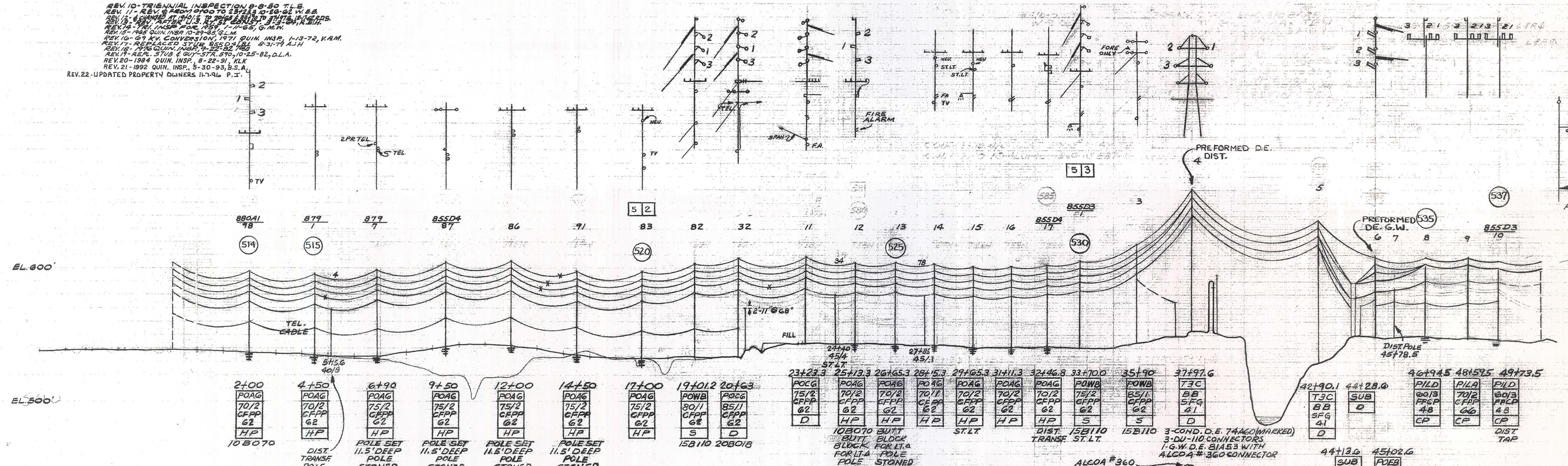
Scanned On: Nov 02
 Archive ID: 023-335

TOWER 71 TO TOWER 75
 R/W DEPT MAP NO. 2342
 (0-302'60)
 REVISION DATE: 12-5-94

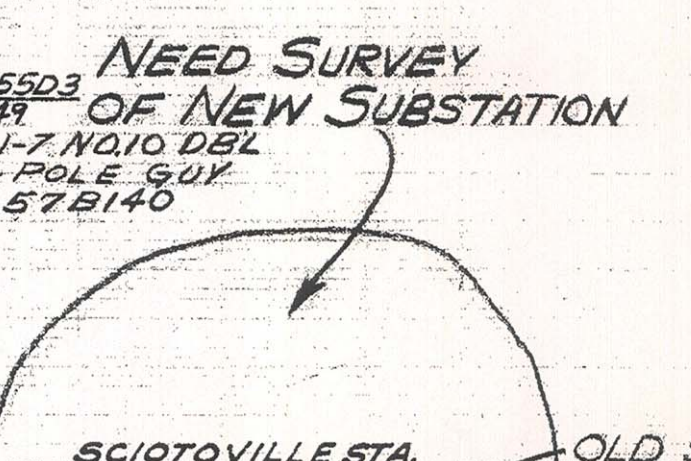
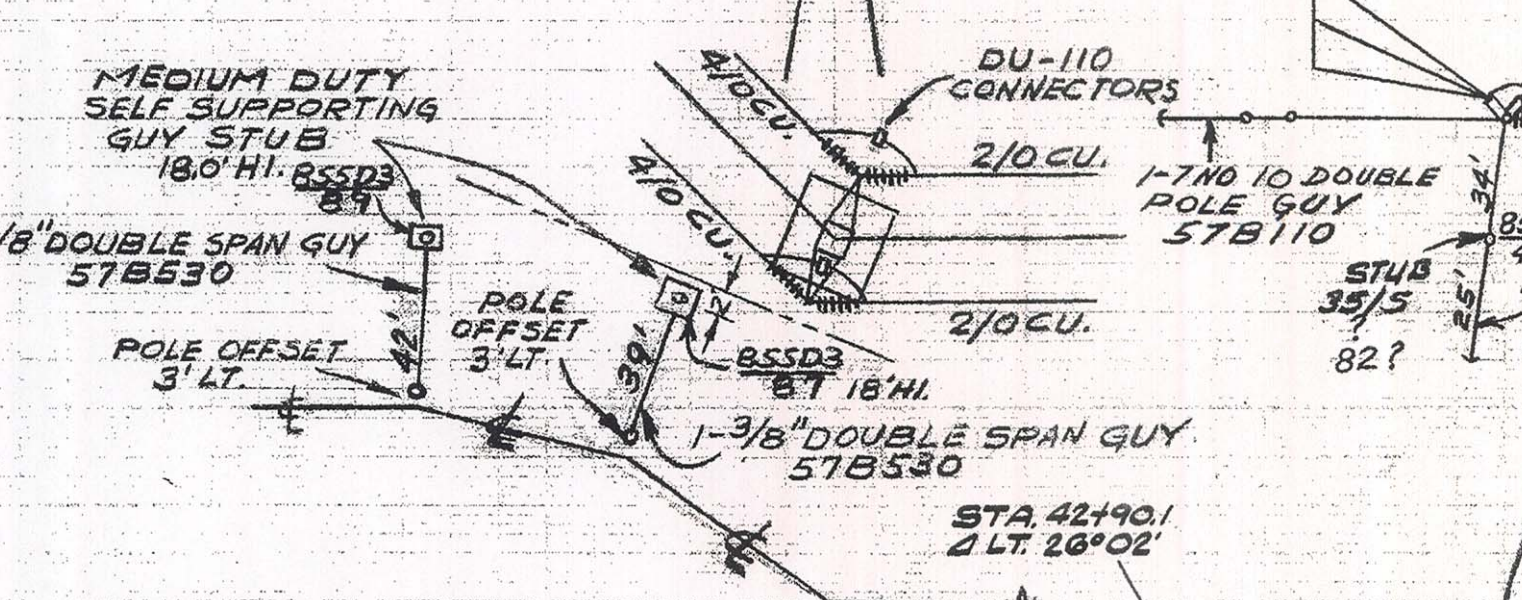
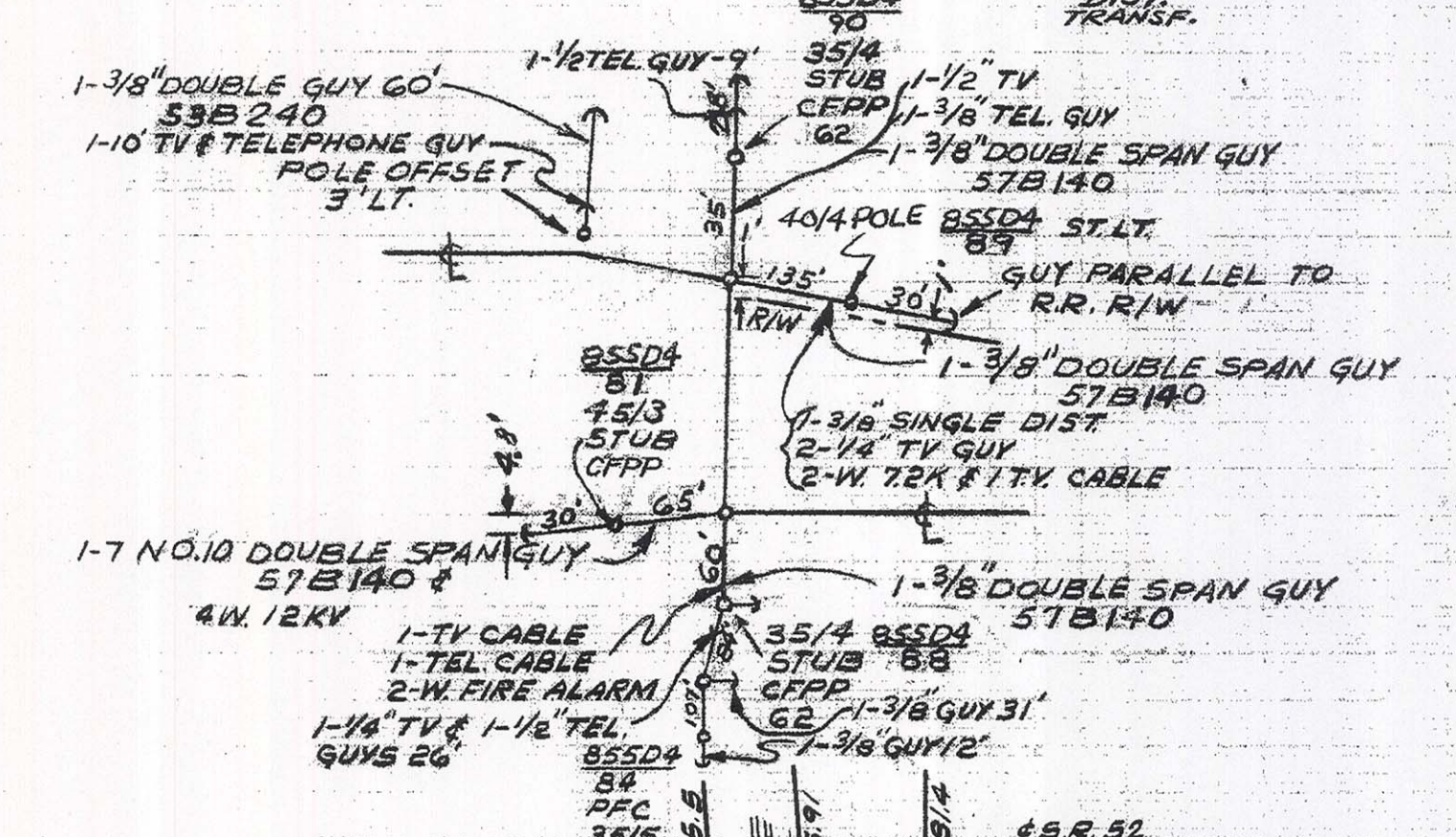
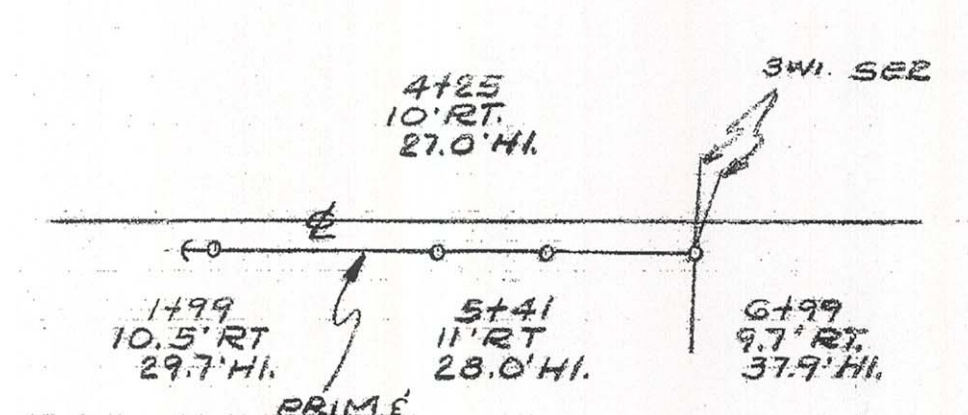
0-30281E-15
 SHEET 20 OF 39 SHEETS
 BAKER - DON MARQUIS 165KV LINE

P3369

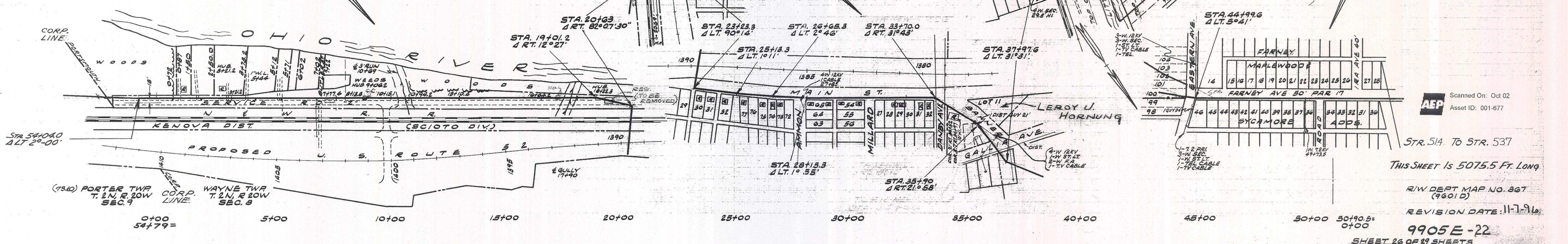
REV. 10 - TRIENNIAL INSPECTION 8-9-50 T.L.S.
 REV. 11 - REV. 8 FROM 1900 TO 1923, 10-20-52 W.B.S.
 REV. 12 - REV. 11 FROM 1923 TO 1940, 10-20-52 W.B.S.
 REV. 13 - REV. 12 FROM 1940 TO 1945, 10-20-52 W.B.S.
 REV. 14 - REV. 13 FROM 1945 TO 1950, 10-20-52 W.B.S.
 REV. 15 - REV. 14 FROM 1950 TO 1955, 10-20-52 W.B.S.
 REV. 16 - REV. 15 FROM 1955 TO 1960, 10-20-52 W.B.S.
 REV. 17 - REV. 16 FROM 1960 TO 1965, 10-20-52 W.B.S.
 REV. 18 - REV. 17 FROM 1965 TO 1970, 10-20-52 W.B.S.
 REV. 19 - REV. 18 FROM 1970 TO 1975, 10-20-52 W.B.S.
 REV. 20 - REV. 19 FROM 1975 TO 1980, 10-20-52 W.B.S.
 REV. 21 - REV. 20 FROM 1980 TO 1985, 10-20-52 W.B.S.
 REV. 22 - REV. 21 FROM 1985 TO 1990, 10-20-52 W.B.S.
 REV. 23 - REV. 22 FROM 1990 TO 1995, 10-20-52 W.B.S.
 REV. 24 - REV. 23 FROM 1995 TO 2000, 10-20-52 W.B.S.
 REV. 25 - REV. 24 FROM 2000 TO 2005, 10-20-52 W.B.S.
 REV. 26 - REV. 25 FROM 2005 TO 2010, 10-20-52 W.B.S.
 REV. 27 - REV. 26 FROM 2010 TO 2015, 10-20-52 W.B.S.
 REV. 28 - REV. 27 FROM 2015 TO 2020, 10-20-52 W.B.S.
 REV. 29 - REV. 28 FROM 2020 TO 2025, 10-20-52 W.B.S.
 REV. 30 - REV. 29 FROM 2025 TO 2030, 10-20-52 W.B.S.



2+00	4+50	6+90	9+50	12+00	14+50	17+00	19+01.2	20+63	23+23.3	25+13.3	26+65.3	28+15.3	29+65.3	31+11.3	32+46.8	33+70.0	35+90	37+97.6	42+90.1	44+28.6	46+94.5	48+57.5	49+73.5	
POAG	POAG	POAG	POAG	POAG	POAG	POAG	POAG	POAG	POAG	POAG	POAG	POAG	POAG	POAG	POAG	POAG	POAG	POAG	T3C	SUB	P/LD	P/LA	P/LD	
70/2	70/2	75/2	85/1	75/2	75/2	75/2	75/2	75/2	75/2	75/2	75/2	75/2	75/2	75/2	75/2	75/2	75/2	75/2	BB	BB	BB	BB	BB	
62	62	62	62	62	62	62	62	62	62	62	62	62	62	62	62	62	62	62	41	41	41	41	41	
HP	HP	HP	HP	HP	HP	HP	HP	HP	HP	HP	HP	HP	HP	HP	HP	HP	HP	HP	D	D	D	D	D	
10B070	DIST TRANSF POLE	POLE SET 11.5' DEEP POLE STONED	POLE SET 11.5' DEEP POLE STONED PRI. DE.	POLE SET 11.5' DEEP POLE STONED	POLE SET 11.5' DEEP POLE STONED	POLE SET 11.5' DEEP POLE STONED	15B110 20B013	10B070 BUTT BLOCK BLOCK FOR LTA FOR LTA POLE STONED DIST. TRANSF.	10B070 BUTT BLOCK BLOCK FOR LTA FOR LTA POLE STONED DIST. TRANSF.	10B070 BUTT BLOCK BLOCK FOR LTA FOR LTA POLE STONED DIST. TRANSF.	10B070 BUTT BLOCK BLOCK FOR LTA FOR LTA POLE STONED DIST. TRANSF.	10B070 BUTT BLOCK BLOCK FOR LTA FOR LTA POLE STONED DIST. TRANSF.	10B070 BUTT BLOCK BLOCK FOR LTA FOR LTA POLE STONED DIST. TRANSF.	10B070 BUTT BLOCK BLOCK FOR LTA FOR LTA POLE STONED DIST. TRANSF.	10B070 BUTT BLOCK BLOCK FOR LTA FOR LTA POLE STONED DIST. TRANSF.	10B070 BUTT BLOCK BLOCK FOR LTA FOR LTA POLE STONED DIST. TRANSF.	10B070 BUTT BLOCK BLOCK FOR LTA FOR LTA POLE STONED DIST. TRANSF.	10B070 BUTT BLOCK BLOCK FOR LTA FOR LTA POLE STONED DIST. TRANSF.	3-COND. D.E. TAAGO (MARKED) 3-DU-110 CONNECTORS 1-G.W. D.E. B1A53 WITH ALCOA #360 CONNECTOR	44+13.0 SUB D	45+02.6 P/OB 70/2 C/P 62 D/HP	P/LD 60/3 C/P 48 CP	P/LA 70/2 C/P 48 CP	P/LD 60/3 C/P 48 CP



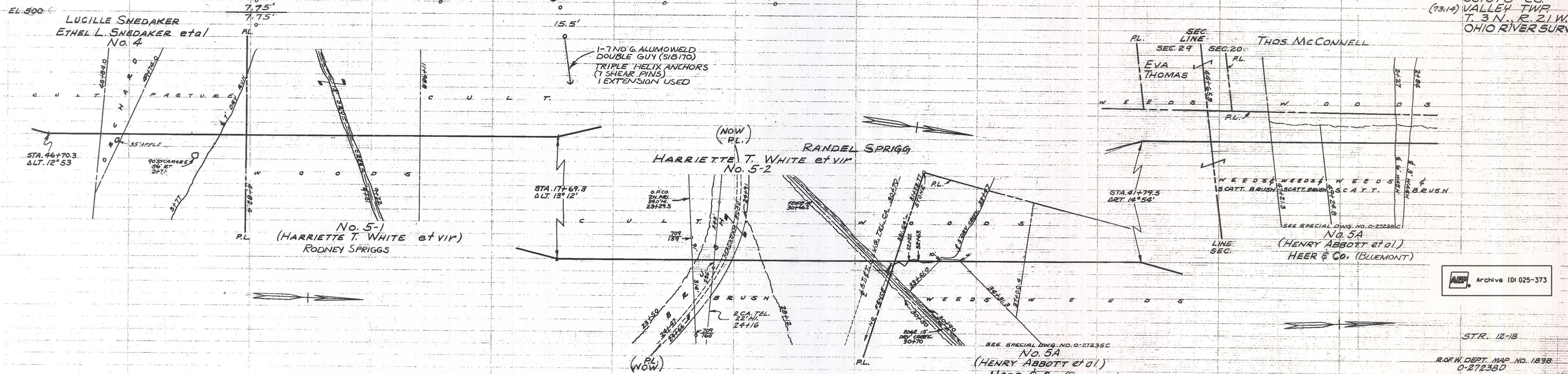
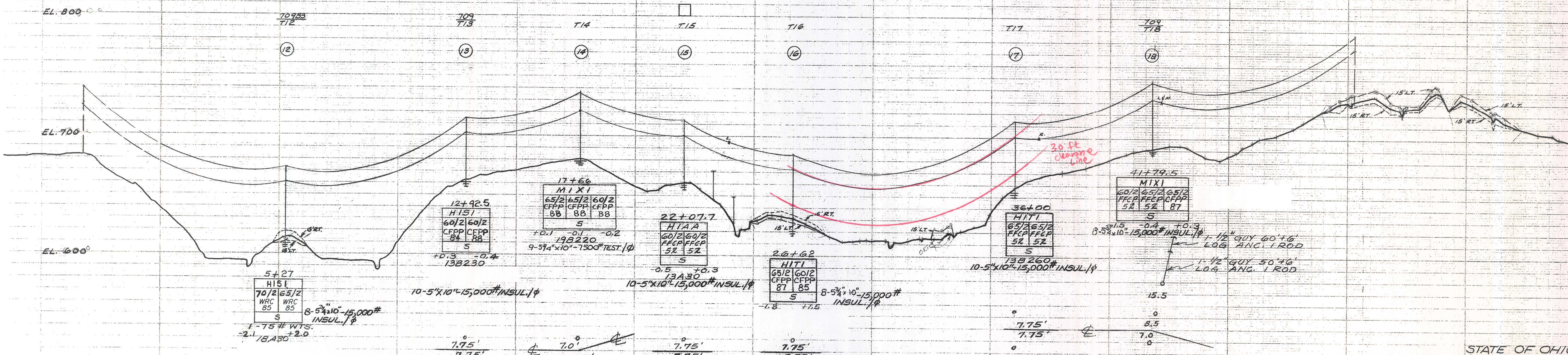
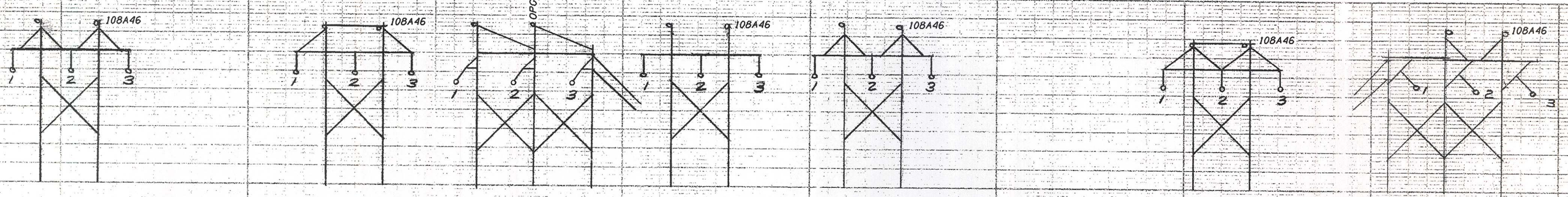
STATE OF OHIO
 SCIOTO COUNTY
 PORTER TOWNSHIP
 T. 2 N. R. 20 W.
 (73.19) CITY OF PORTSMOUTH
 SCIOTOVILLE



Scanned On: Oct 02
 Asset ID: 001-677

STR. 514 TO STR. 537
 THIS SHEET IS 5075.5 FT. LONG
 R/W DEPT MAP NO. 367
 (9001 D)
 REVISION DATE: 11-7-96
 9905 E-22
 SHEET 26 OF 29 SHEETS

REV. 1 - FINAL CORRECTED 8/16/87 JMA
 REV. 2 - FOR NEELY LUCASVILLE ATOMIC II-ET-66
 REV. 3 - 1960 TOLINS & B. G. W. R. M.
 REV. 4 - 1970 QUIN, ING. & 1-7-74 R.H.F.
 REV. 5 - NEW 100' C&R MAP NO. FOR T12, 5-4-75, R.E.B.
 REV. 6 - 1975 QUIN, ING. & 1-7-75 R.H.F.
 REV. 7 - 1986 S.M.C. INSPECTION, 11-12-87, D.L.A.
 REV. 8 - REVISE PLAN & PROFILE, 8-11-88, B.S.A.
 REV. 9 - REV. PROP. OWNERS, 2-13-88 JMA
 REV. STR. T14
 REV. 10 - LINE INSPECTION, 10/28/08 RML



STATE OF OHIO
 SCIOTO CO.
 VALLEY TWP.
 T. 3 N., R. 21 W.
 OHIO RIVER SURVEY
 (13-14)

Archive ID: 025-373

STR. 12-18
 R.O.F.W. DEPT. MAP NO. 1898
 0-27238D
 REVISION DATE: 10/28/08
0-27232E-10
 SHEET 3 OF 13 SHEETS

3 0+00 3 5+00 3 10+00 3 15+00 3 20+00 3 25+00 3 30+00 3 35+00 3 40+00 3 45+00 3 50+00 3 55+00