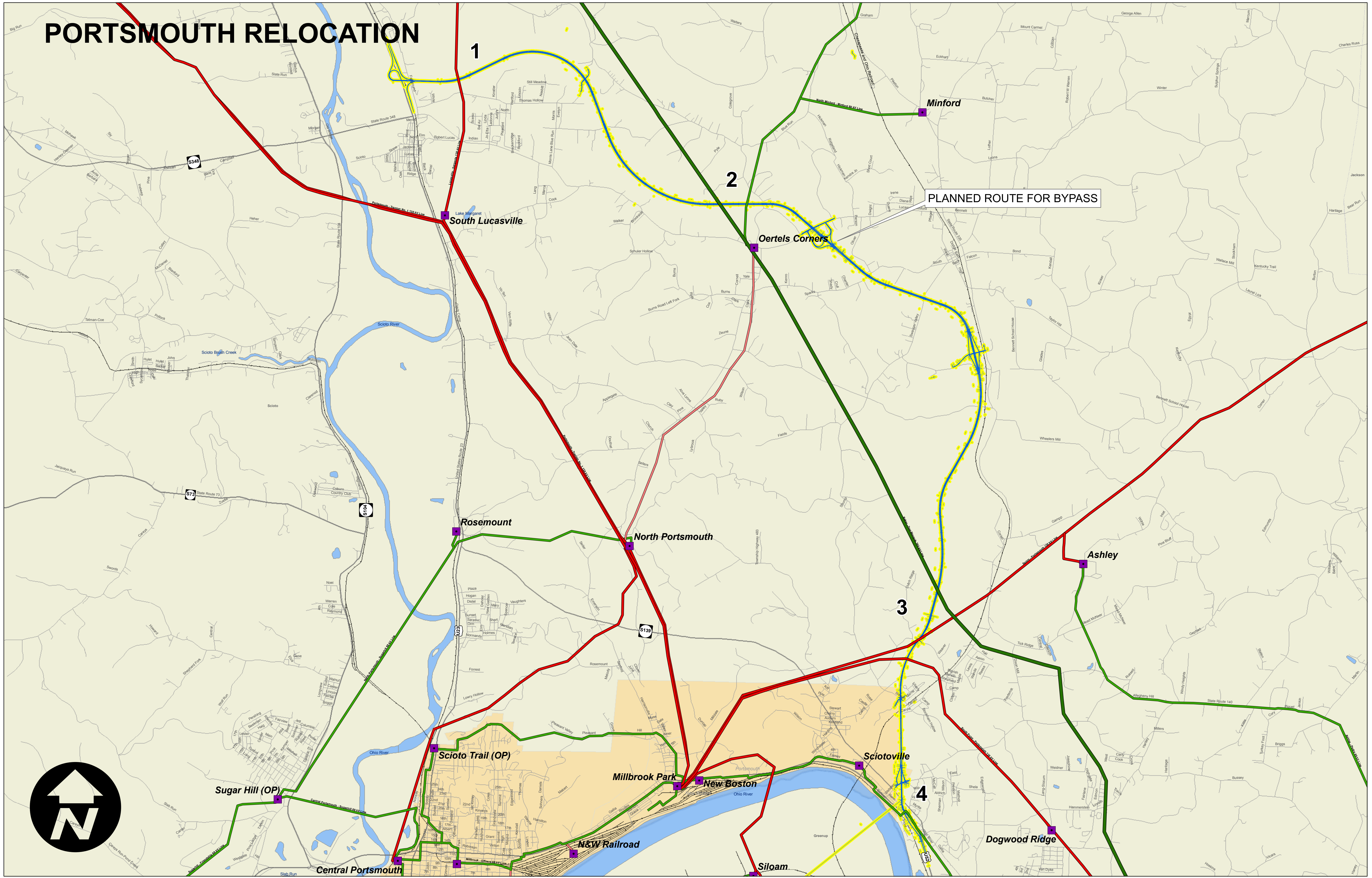


PORTSMOUTH RELOCATION



PORTSMOUTH RELOCATION

Legend

STRUCTURE

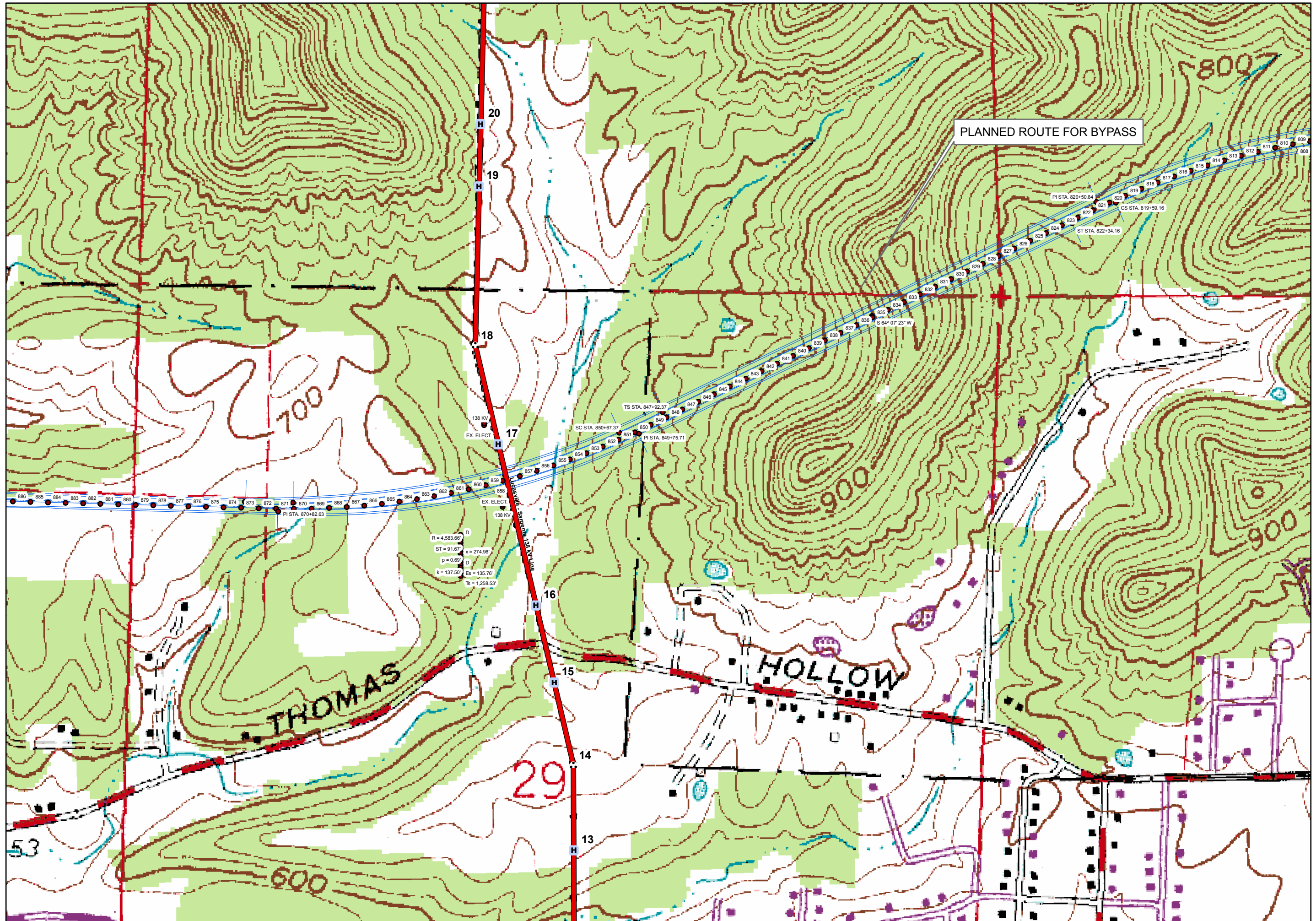
STRUCTURE_TYPE

- 1 pole
- 1 pole with push brace
- 2 pole
- 3 pole
- 4 pole
- 5 pole
- ▲ A-frame
- Brace
- ⌘ Brady
- ⌘ Double circuit lattice
- ⌘ Franklin
- ⌘ Guyed V
- ⌘ Guyed Y
- ⌘ Single circuit lattice
- ⌘ Triple circuit lattice
- ⌘ H-frame
- ⌘ Lattice H-Frame
- ⌘ Tubular H-Frame
- × X structure
- ⊕ Other
- ⊕ Unknown
- STATION

TRANS LINE

DESIGN KV

- 23 kV
- 34 kV
- 40 kV
- 46 kV
- 69 kV
- 88 kV
- 115 kV
- 138 kV
- 161 kV
- 230 kV
- 345 kV
- 500 kV
- 765 kV
- Unknown
- undefined
- PROPOSED ROUTE
- Railroads



PORTSMOUTH RELOCATION

Legend

STRUCTURE

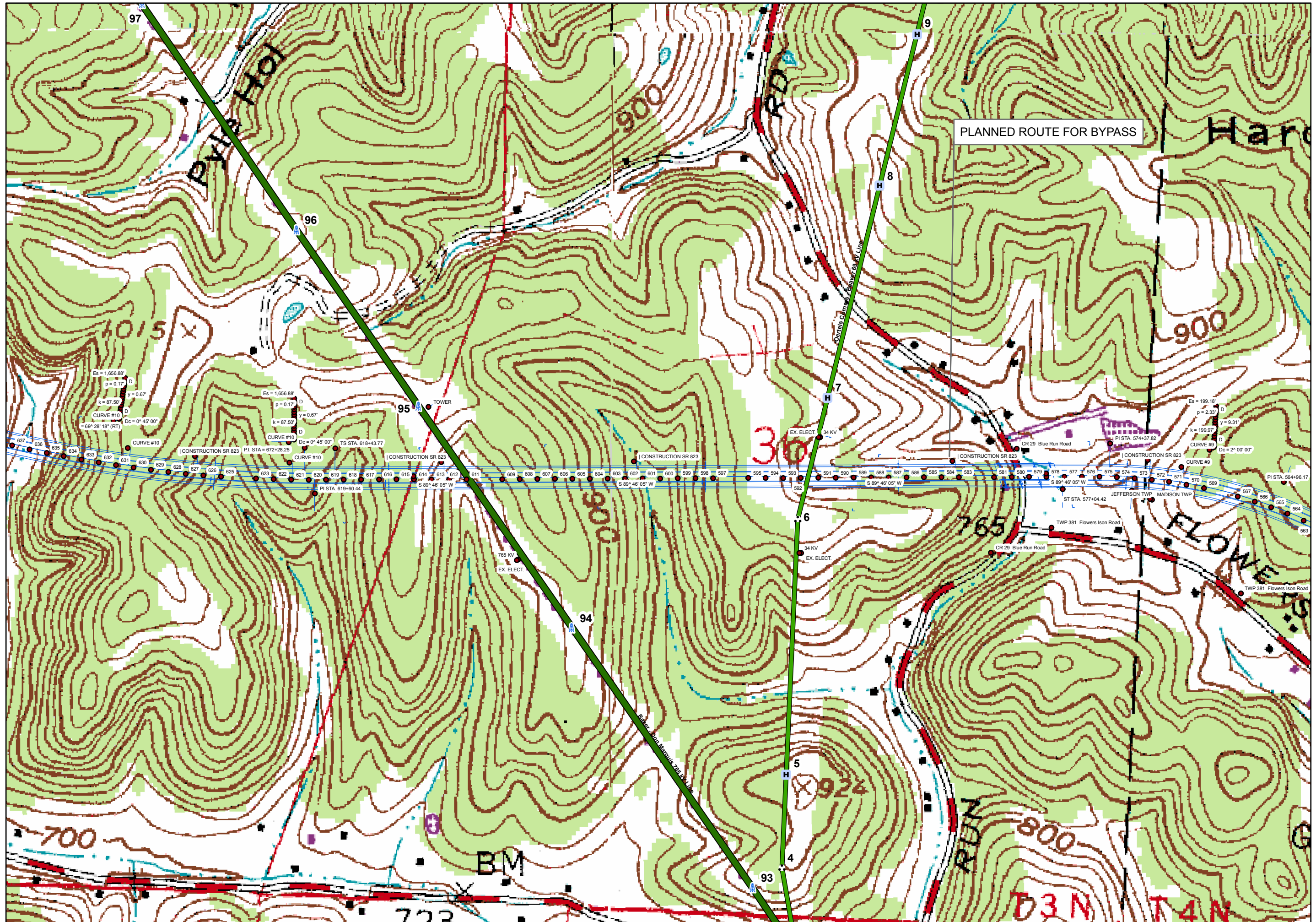
STRUCTURE_TYPE

- 1 pole
- 1 pole with push brace
- 2 pole
- 3 pole
- 4 pole
- 5 pole
- ▲ A-frame
- Brace
- ▲ Brady
- ▲ Double circuit lattice
- ▲ Franklin
- ▲ Guyed V
- ▲ Guyed Y
- ▲ Single circuit lattice
- ▲ Triple circuit lattice
- ▲ H-frame
- ▲ Lattice H-Frame
- ▲ Tubular H-Frame
- × X structure
- ⊕ Other
- ⊕ Unknown
- STATION

TRANS LINE

DESIGN KV

- 23 kV
- 34 kV
- 40 kV
- 46 kV
- 69 kV
- 88 kV
- 115 kV
- 138 kV
- 161 kV
- 230 kV
- 345 kV
- 500 kV
- 765 kV
- Unknown
- undefined
- PROPOSED ROUTE
- Railroads



PORTSMOUTH RELOCATION

Legend

STRUCTURE

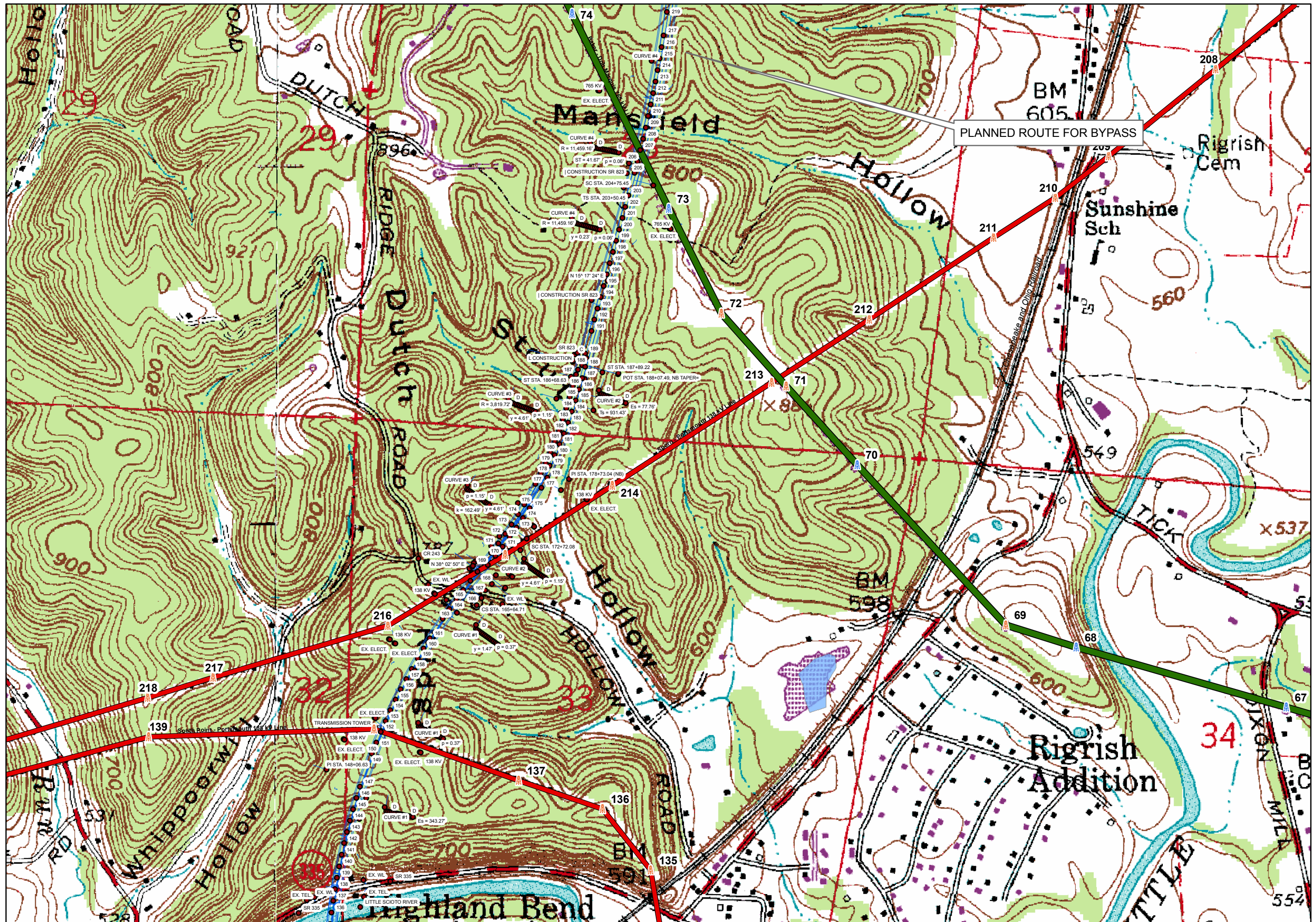
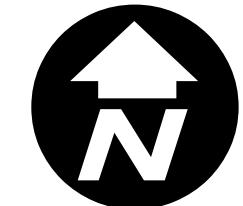
STRUCTURE_TYPE

- 1 pole
- 1 pole with push brace
- 2 pole
- 3 pole
- 4 pole
- 5 pole
- ▲ A-frame
- Brace
- ▲ Brady
- ▲ Double circuit lattice
- ▲ Franklin
- ▲ Guyed V
- ▲ Guyed Y
- ▲ Single circuit lattice
- ▲ Triple circuit lattice
- H-frame
- Lattice H-Frame
- Tubular H-Frame
- × X structure
- ⊕ Other
- ⊕ Unknown
- STATION

TRANS LINE

DESIGN KV

- 23 kV
- 34 kV
- 40 kV
- 46 kV
- 69 kV
- 88 kV
- 115 kV
- 138 kV
- 161 kV
- 230 kV
- 345 kV
- 500 kV
- 765 kV
- Unknown
- undefined
- PROPOSED ROUTE
- Railroads



PORTSMOUTH RELOCATION

Legend

STRUCTURE

STRUCTURE_TYPE

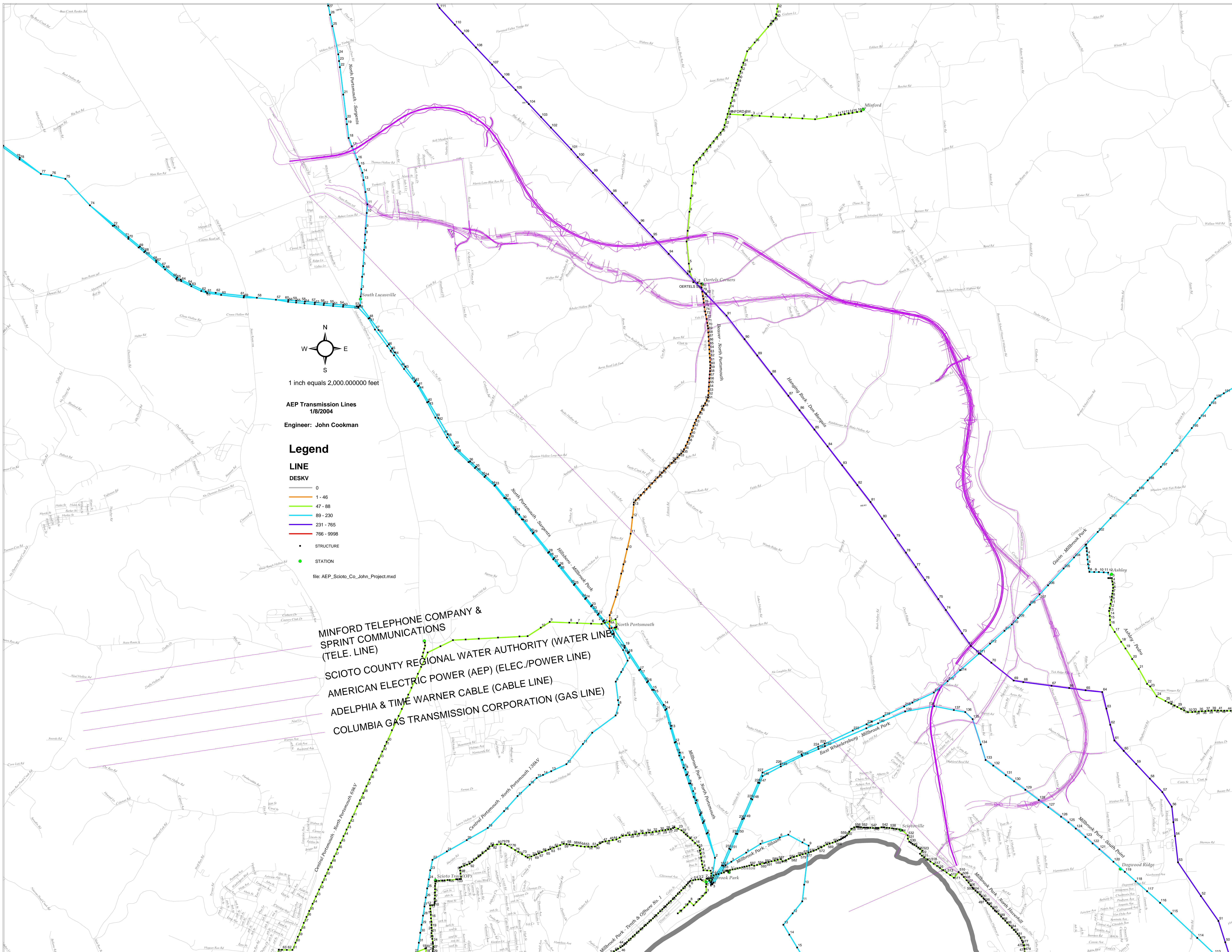
- 1 pole
- 1 pole with push brace
- 2 pole
- 3 pole
- 4 pole
- 5 pole
- ▲ A-frame
- Brace
- ⌘ Brady
- ⌘ Double circuit lattice
- ⌘ Franklin
- ⌘ Guyed V
- ⌘ Guyed Y
- ⌘ Single circuit lattice
- ⌘ Triple circuit lattice
- ⌘ H-frame
- ⌘ Lattice H-Frame
- ⌘ Tubular H-Frame
- ⌘ X structure
- ⌘ Other
- ⌘ Unknown
- STATION

TRANS LINE

DESIGN KV

- 23 kV
- 34 kV
- 40 kV
- 46 kV
- 69 kV
- 88 kV
- 115 kV
- 138 kV
- 161 kV
- 230 kV
- 345 kV
- 500 kV
- 765 kV
- Unknown
- undefined
- PROPOSED ROUTE
- Railroads





N
W E
S
1 inch equals 2,000,000,000 feet

AEP Transmission Lines
1/8/2004
Engineer: John Cookman

- Legend**
- LINE**
- 0
 - 1 - 46
 - 47 - 88
 - 89 - 230
 - 231 - 765
 - 766 - 9998
- STRUCTURE
- STATION
- file: AEP_Scioto_Co_John_Project.mxd

MINFORD TELEPHONE COMPANY &
SPRINT COMMUNICATIONS
(TELE. LINE)

SCIOTO COUNTY REGIONAL WATER AUTHORITY (WATER LINE)

AMERICAN ELECTRIC POWER (AEP) (ELEC./POWER LINE)

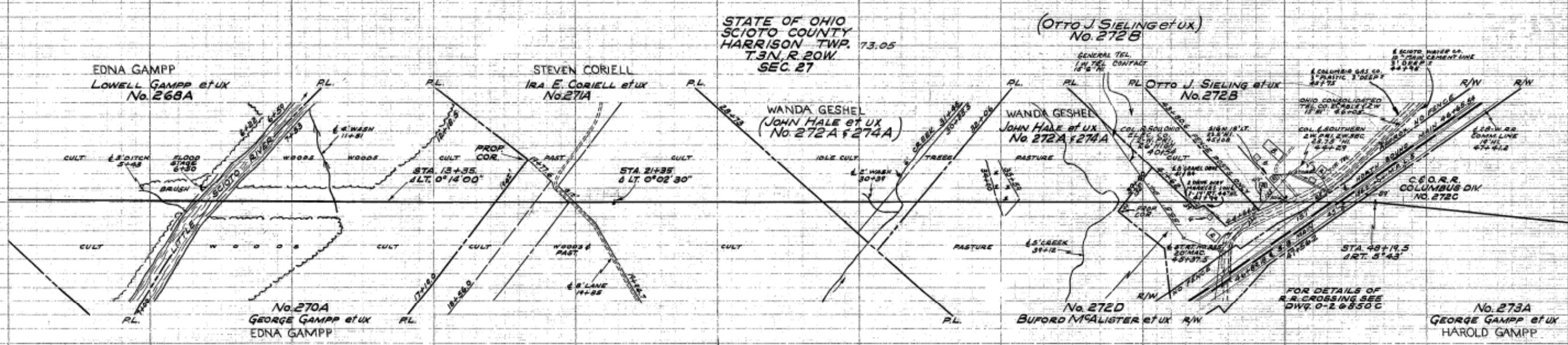
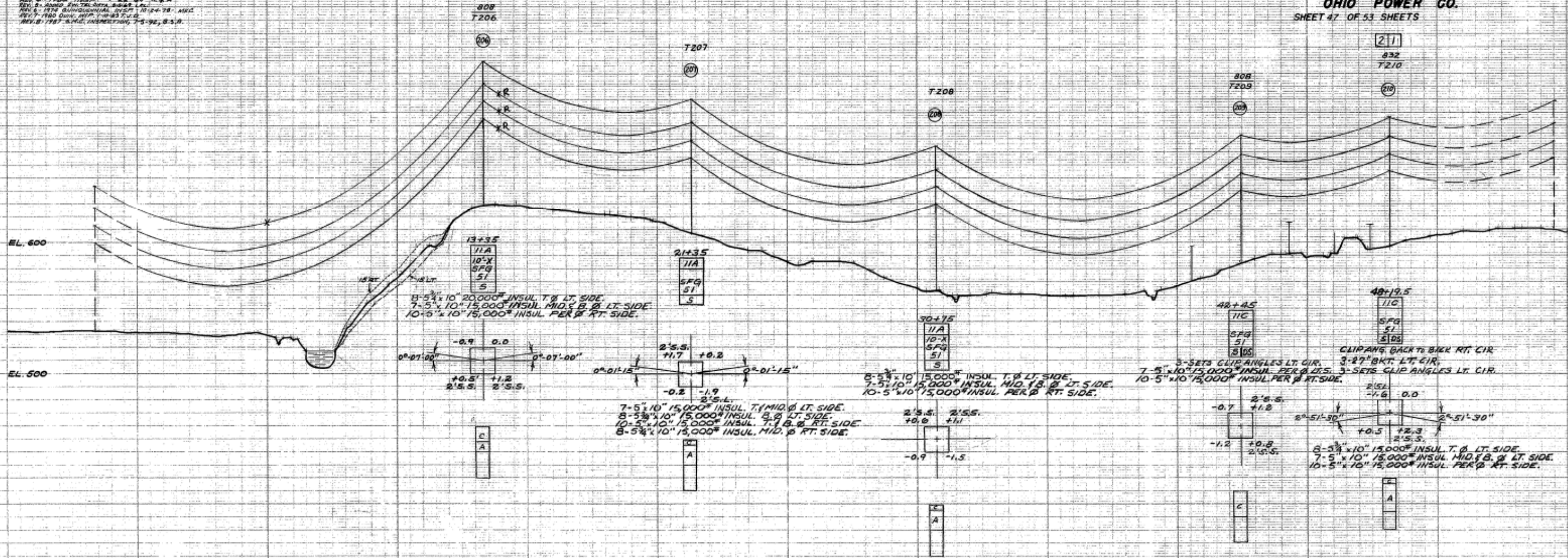
ADELPHIA & TIME WARNER CABLE (CABLE LINE)

COLUMBIA GAS TRANSMISSION CORPORATION (GAS LINE)

REV. 1: FINAL REVISION 11-8-92 JAC
 REV. 2: 1989 PER INDR 0-19-89 W.S.M.
 REV. 3: 1988 PER INDR 0-19-88 W.S.M.
 REV. 4: 1987 PER INDR 0-19-87 W.S.M.
 REV. 5: 1986 PER INDR 0-19-86 W.S.M.
 REV. 6: 1985 PER INDR 0-19-85 W.S.M.
 REV. 7: 1984 PER INDR 0-19-84 W.S.M.
 REV. 8: 1983 PER INDR 0-19-83 W.S.M.
 REV. 9: 1982 PER INDR 0-19-82 W.S.M.
 REV. 10: 1981 PER INDR 0-19-81 W.S.M.

SPORN-PORTSMOUTH 138 KV. LINE

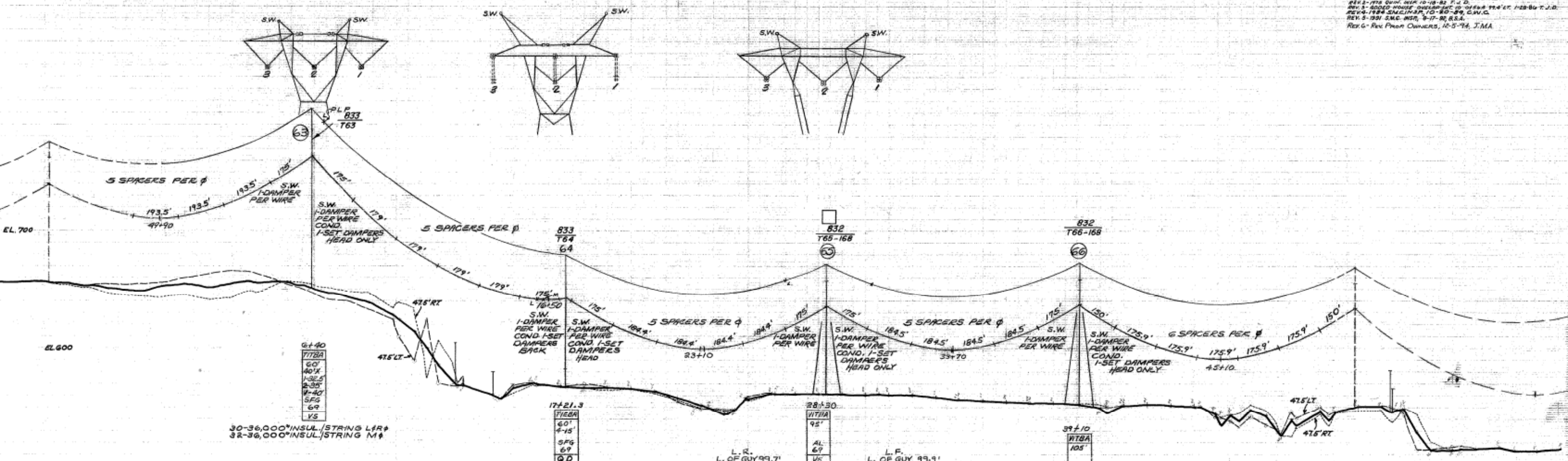
OHIO POWER CO.
 SHEET 47 OF 53 SHEETS



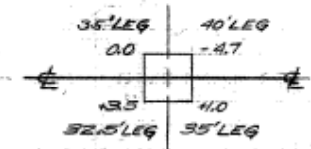
47 0+00 46 50+00
 47 5+00
 47 10+00
 47 15+00
 47 20+00
 47 25+00
 47 30+00
 47 35+00
 47 40+00
 47 45+00
 48 5+00 48 0+00

Scanned On: Nov 02
 Archive ID: 021-342
 TOWER 206-210
 R. DE. W. DEPT. MAP NO. 1699
 0-26530D
 REVISION DATE: 7-5-92
 0-26571E-8
 SHEET 47 OF 53 SHEETS

REV 1 - REV AFTER CONSTRUCTION 6-9-78 TJB
 REV 2 - 1978 DRAIN MAP NO. 2342 (8-30-76 C)
 REV 3 - 80000 WOODS, OVERLAP WITH 1978 T.J.B. 128-84 T.J.B.
 REV 4 - 1984 SNE LINER, 10-20-89, C.V.C.
 REV 5 - 1991 S.M.C. INSTR. 9-17-91, S.S.A.
 REV 6 - REV FROM OWNERS, 10-5-94, J.M.A.



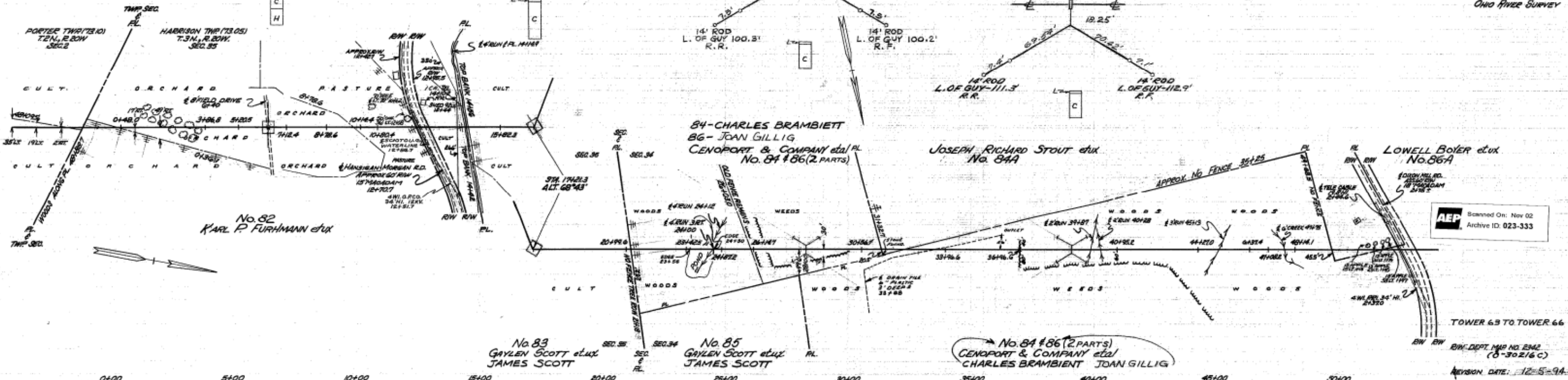
30-36,000"INSUL./STRING L.R.F.
 32-36,000"INSUL./STRING M.F.



34-36,000"INSUL./STRING L.M.R. REAR/FORE
 32-25,000"INSUL./STRING M.F. V. STRING (2 DBL. STRINGS)
 30-25,000"INSUL./STEADY STRING (2) R.F.
 SQUARE ARM RT. SIDE WITH 4'-6" EXT. LINK

30-25,000"INSUL./STRING L.R.F.
 L. OF GUY-112.8'
 14' ROD L. OF GUY-112.8' R.R.

STATE OF OHIO
 SCIOTO COUNTY
 OHIO RIVER SURVEY



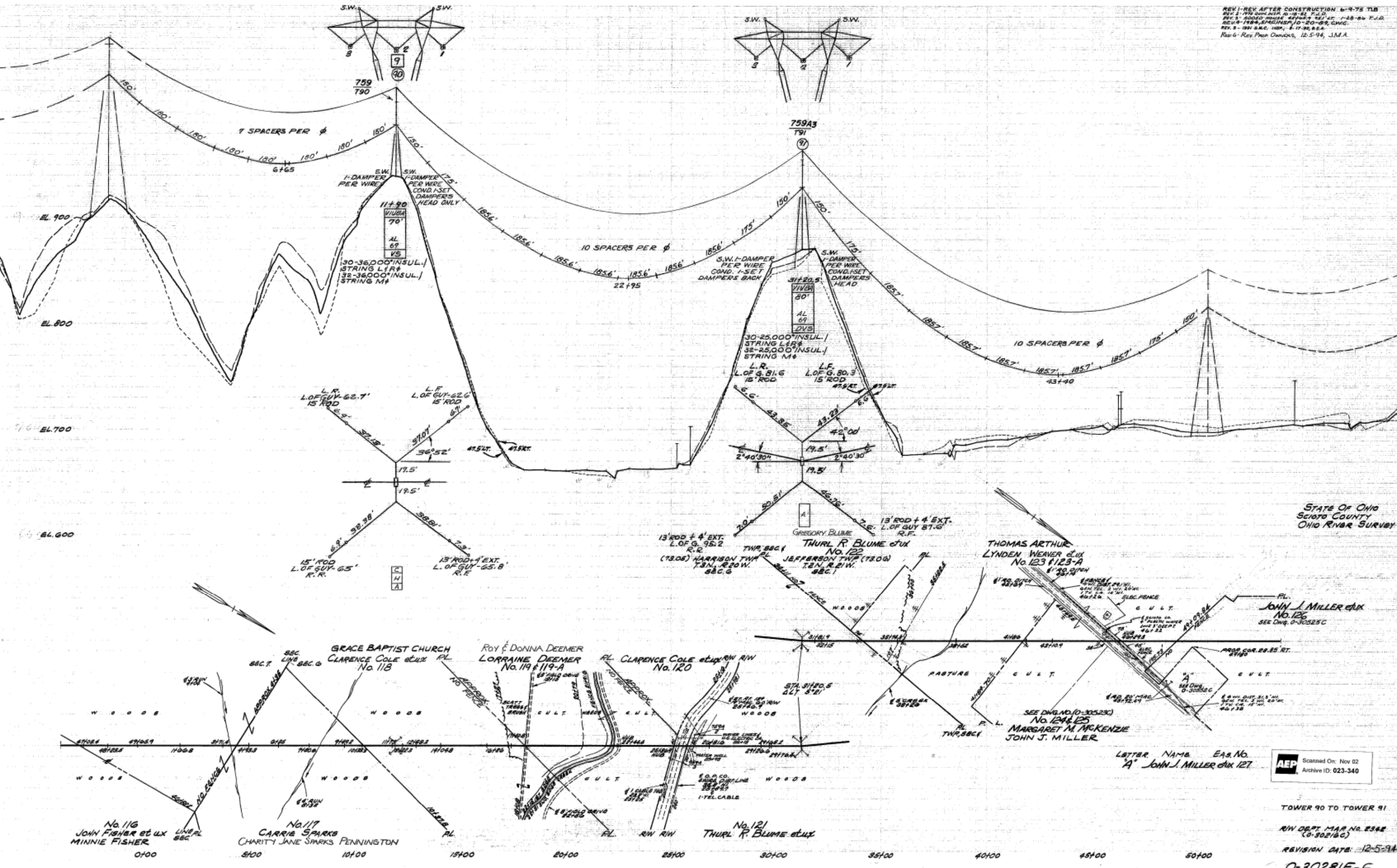
Scanned On: Nov 02
 Archive ID: 023-333

TOWER 63 TO TOWER 66
 BUREAU MAP NO. 2342
 (8-30-76 C)

REVISION DATE: 12-5-94

0-30281E-16
 SHEET 18 OF 33 SHEETS
 RIVER-DON MARSH'S 765K LINE

REV 1 - REV AFTER CONSTRUCTION 6-9-75 TIB
 REV 2 - REV CORRECTED 10-18-75 T.C.D.
 REV 3 - ADDED HOUSE AFFORDS REV ET. 1-28-84 T.J.D.
 REV 4 - 1984, SPACERS 10'-20'-89, CMG.
 REV 5 - 1981 S.M.C. 1089, 2-17-82, B.S.A.
 REV 6 - Rev. Proc. 000005, 12-5-94, J.M.A.



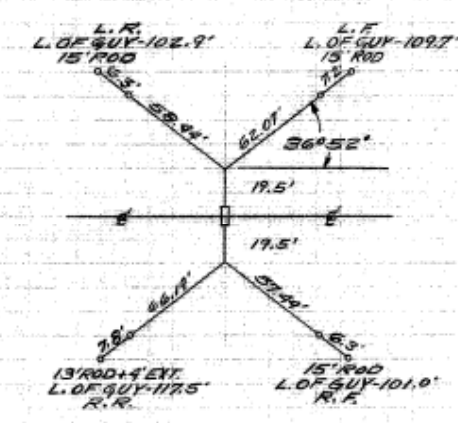
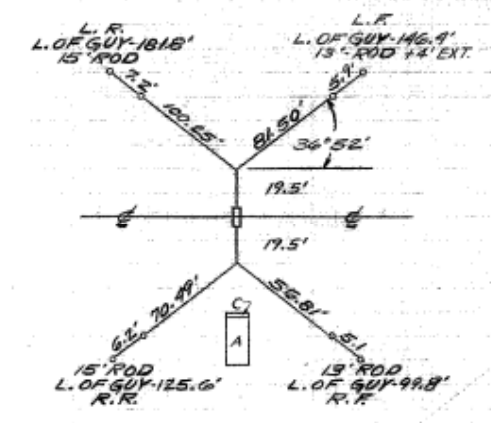
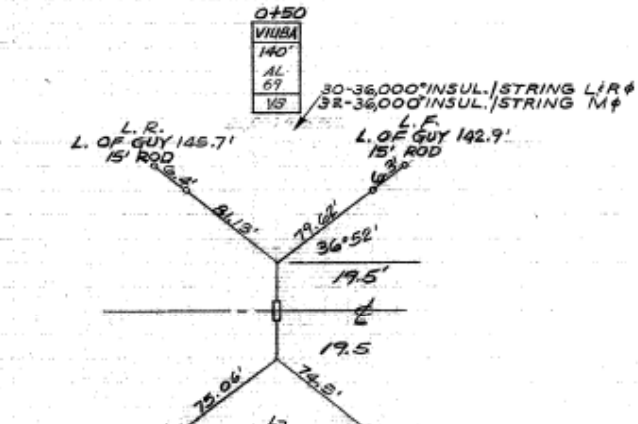
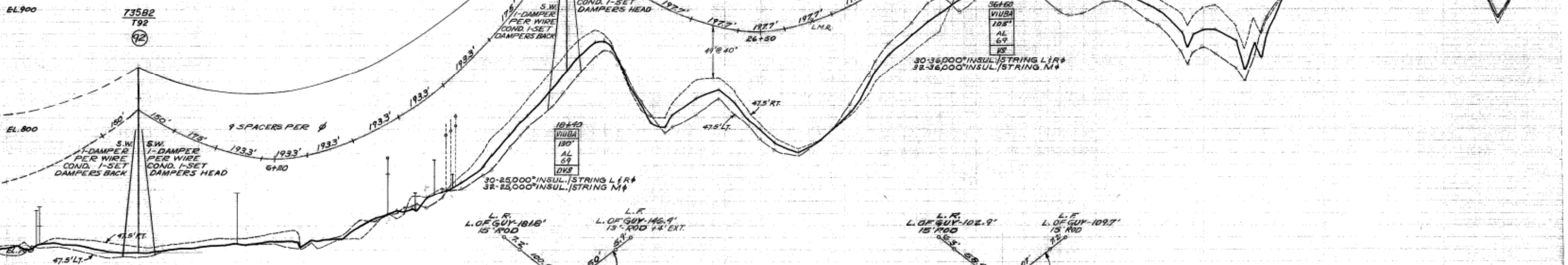
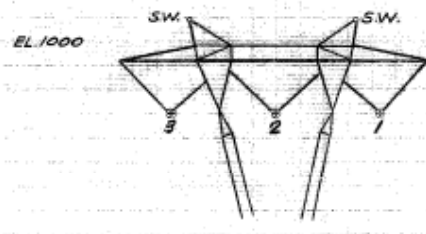
STATE OF OHIO
 SCIOTO COUNTY
 OHIO RIVER SURVEY

Scanned On: Nov 02
 Archive ID: 023-340

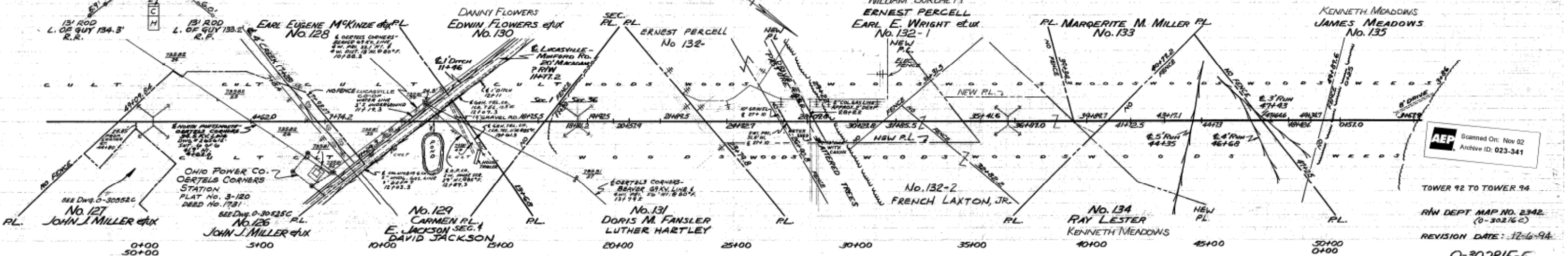
TOWER 90 TO TOWER 91
 RW DEPT. MAP NO. 2542
 (0-302160)
 REVISION DATE: 12-5-94

0-30281E-6
 SHEET 25 OF 39 SHEETS
 DRAWN: DON MARRAS, T.C. EVANS

REV 1 - REV AFTER CONSTRUCTION 6-9-78 TLR
 REV 2 - ADD TOWER 92 12-1-78 TLR
 REV 3 - ADD TOWER 93 12-1-78 TLR
 REV 4 - 1984 SMCINSA 10-20-84 CMC
 REV 5 - 1984 S.M.C. SURVY LINE CORRECTION 12-1-84 JMA
 REV 6 - Rev. Plan. Orient. 12-6-94 JMA



STATE OF OHIO
 SCIOTO COUNTY
 JEFFERSON TWP (23.06)
 T. 2N., R. 21W.
 OHIO RIVER SURVEY

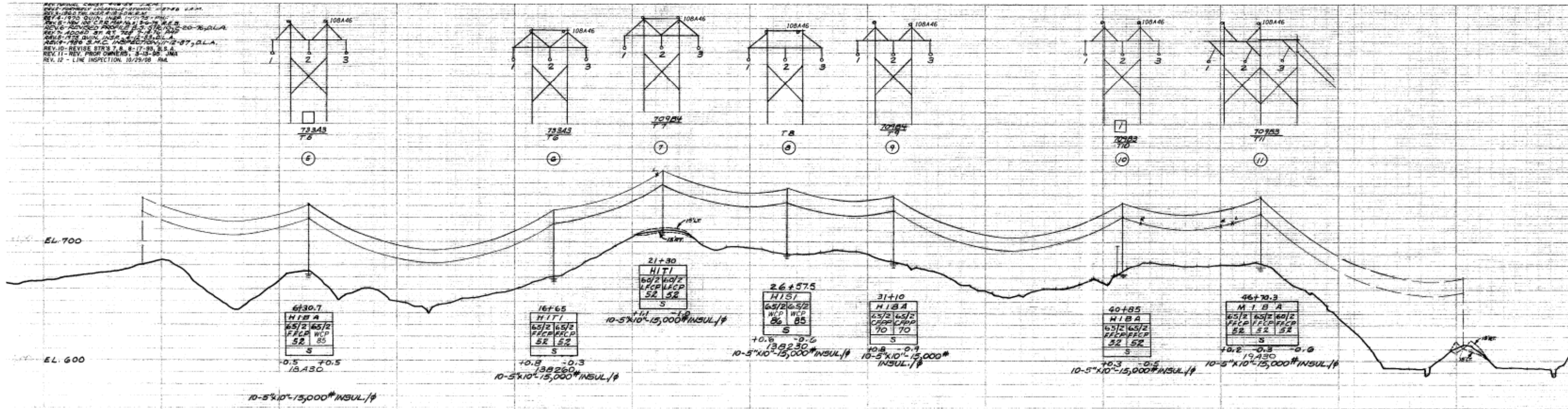


Scanned On: Nov 02
 Archive ID: 023-341

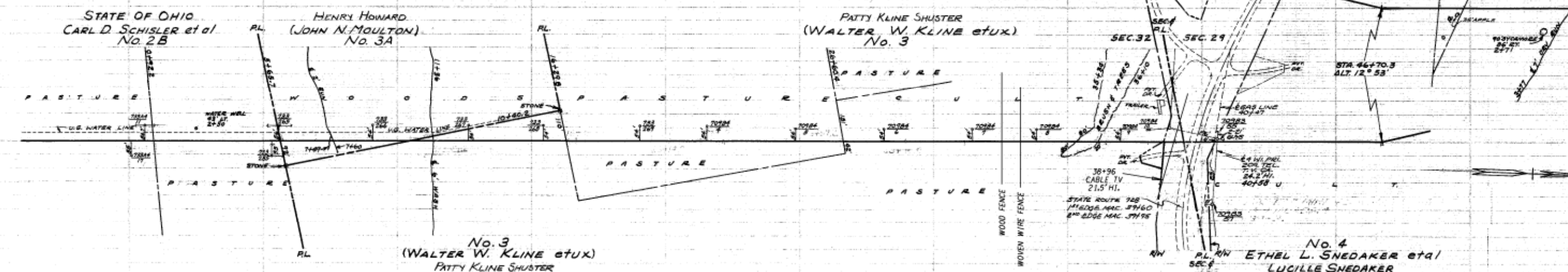
TOWER 92 TO TOWER 94
 R/W DEPT. MAP NO. 2342
 (0-30276C)
 REVISION DATE: 12-6-94

0-30281E-6
 SHEET 26 OF 39 SHEETS
 BAKER - DON MARQUIS 765KI 1 INF

REVISED CROSS SECTION
 REVISED PROFILE
 REVISED TOWER
 REVISED WIRE
 REVISED INSULATION
 REVISED CLEARANCE
 REVISED GRADE
 REVISED SURFACE
 REVISED ELEVATION
 REVISED DISTANCE
 REVISED AREA
 REVISED VOLUME
 REVISED WEIGHT
 REVISED COST
 REVISED TIME
 REVISED DATE



STATE OF OHIO
 SCIOTO COUNTY
 VALLEY TWP
 T.3N. R.21W.
 OHIO RIVER SURVEY
 (13.14)



Archive 101 025-374

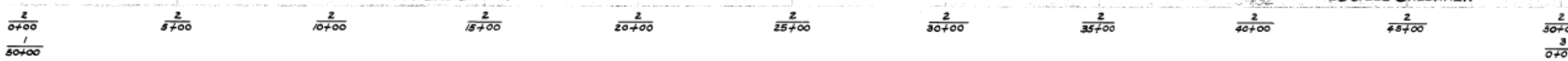
STR. 5-11

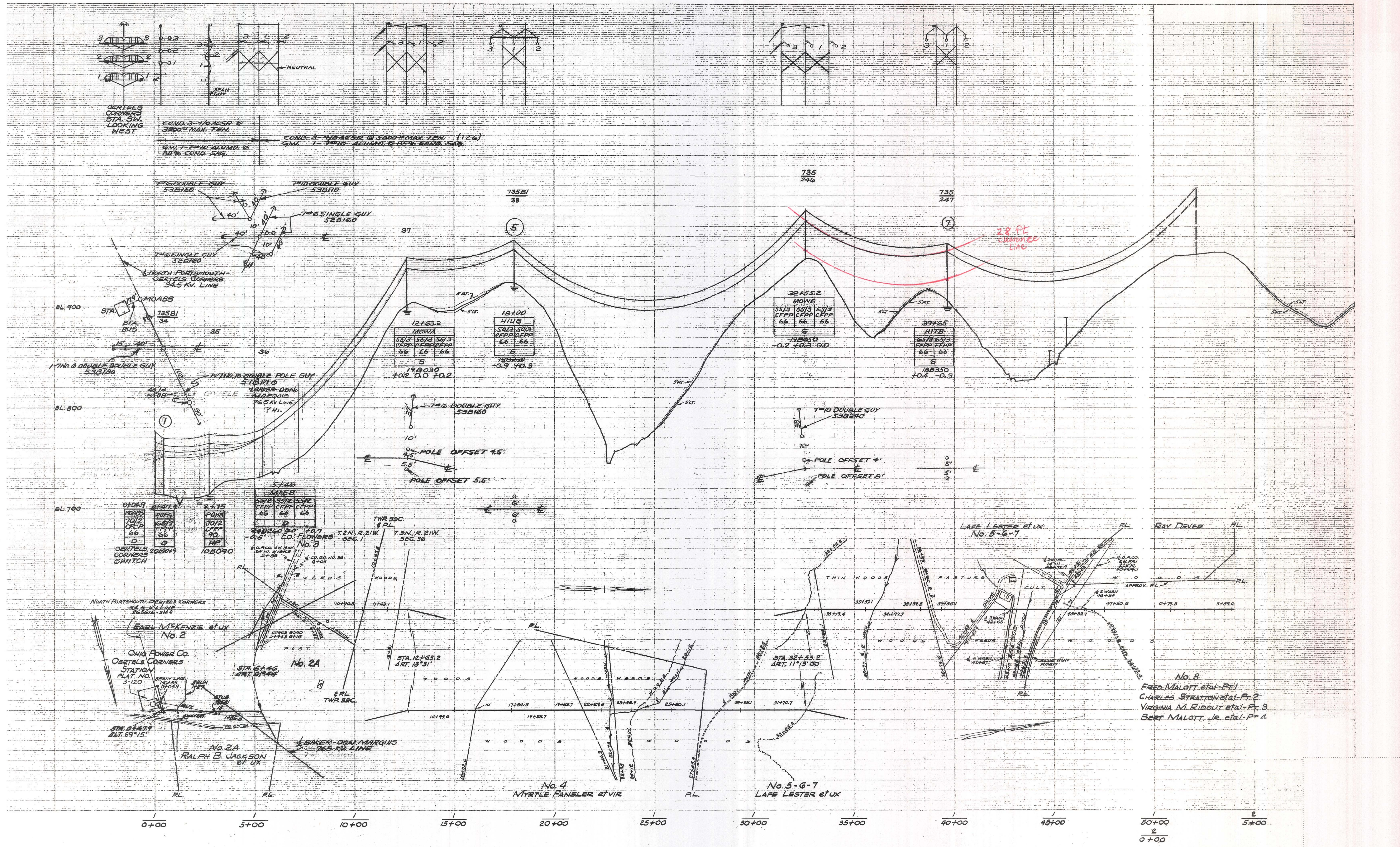
ROFH. DEPT. MAP NO. 1898
 0-27238D

REVISION DATE: 10/29/08

0-27232E-12

SHEET 2 OF 13 SHEETS





REV	REVISION DESCRIPTION	DATE	BY	SCALE
0	FORMER OERTELS CORNERS - BEAVER 69KV LINE, SH COUNT TO 14, CHANGED LINE NAME ADOPTED 2009 CAD STANDARDS, CHANGED DRAWING NUMBER; THIS DRAWING SUPERSEDES DRAWING 27628E SH 1 REV 4	2/8/2010	JAJ	

STATE OF OHIO
 SCIOTO COUNTY
 (1.73.06) JEFFERSON TOWNSHIP
 OHIO RIVER SURVEY

ENGR: -
 DRAWN: -
 CHECKED: -
 APPROVED: -

RW DWG: (27258D)
 RW MAP: 1900
 ISSUED FOR CONSTRUCTION: 1/11/1968



OHIO POWER
 OERTELS CORNERS - EAST BEAVER 69KV LINE
 STR RANGE: STR 1 TO STR 7

LINE: 6-045	DWG: D3P001
EQUIP: TLN160:06045	SHEET: 1 OF 14
REV: 0	

