

SCIOTO COUNTY COMMISSION WASTEWATER SYSTEM IMPROVEMENTS

SCIOTO COUNTY, OHIO
MARCH 2003

SCIOTOVILLE AREA SANITARY SEWER EXTENSIONS RIGRISH, CAMP BENNETT AND HIGHLAND BEND

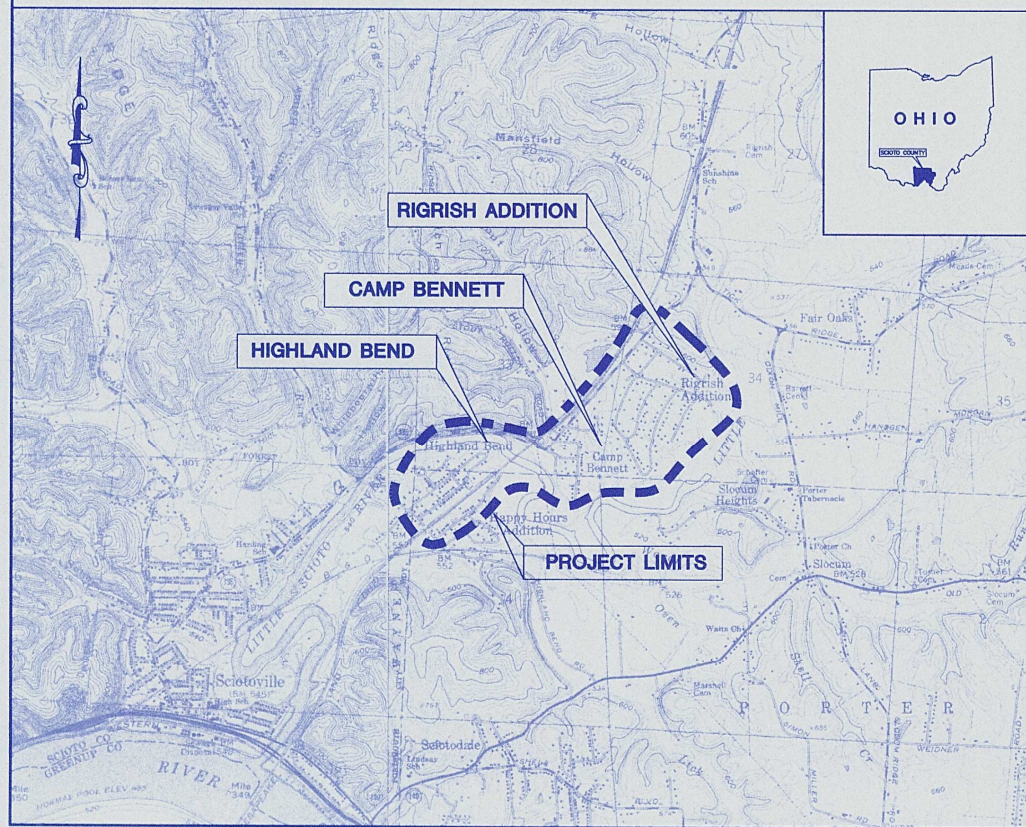
WOOLPERT **WOOLPERT LLP**
1200 Corporate Court
Ashland, Kentucky
41102-5336
606.329.1948
WOOLPERT FAX: 606.324.0147

RECORD DRAWINGS

CONTRACTOR SHALL NOTIFY UTILITY COMPANIES 48 HOURS
IN ADVANCE OF NEW CONSTRUCTION IN VICINITY OF
EXISTING UTILITY LINES



VICINITY MAP



PROJECT INFORMATION

CONSTRUCTION NOTES:

- 1) MINIMUM FORCE MAIN & SANITARY SEWER BURIAL DEPTH SHALL BE 3'-0".
- 2) REFER TO SPECIFICATIONS FOR SEWER BEDDING & BACKFILL REQUIREMENTS.
- 3) MAXIMUM ALLOWABLE COMPLETED SEWER INFILTRATION RATE SHALL BE 200 GALLONS PER DAY PER INCH DIAMETER PER MILE OF PIPE.
- 4) ROOF DRAINS, FOUNDATION DRAINS, AND OTHER CLEAN WATER CONNECTIONS TO THE SANITARY SEWER SYSTEM ARE PROHIBITED.
- 5) CUSTOMER LATERALS SHALL BE 4-INCH UNLESS NOTED OTHERWISE. LATERAL LOCATIONS ARE SHOWN ON PLANS FOR GENERAL REFERENCE ONLY. LOCATIONS SHALL BE ADJUSTED TO SUIT FIELD CONDITIONS OR CUSTOMER REQUIREMENTS.
- 6) CONTRACTOR MUST COMPLY WITH THE EROSION CONTROL PRACTICES AS SPECIFIED IN THE OHIO DEPARTMENT OF NATURAL RESOURCES MANUAL OF RAINWATER AND LAND DEVELOPMENT.
- 7) CONTRACTOR SHALL CONFORM TO ALL APPLICABLE SPECIFICATIONS OF THE LATEST EDITION OF THE OHIO DEPARTMENT OF TRANSPORTATION CONSTRUCTIONS AND MATERIALS SPECIFICATIONS.
- 8) A 10' HORIZONTAL SEPARATION SHALL BE MAINTAINED BETWEEN SANITARY FORCE MAIN PIPE AND WATERLINES.
- 9) ALL 8" SANITARY MAINS AND 6" SERVICES SHALL BE SDR-35 PIPE MEETING THE REQUIREMENTS OF ASTM D-3034 AND ASTM D-3212.
- 10) ALL SANITARY SEWERS OR MANHOLES SHALL BE PLACED WITH AT LEAST 10' HORIZONTAL SEPARATION FROM WATER LINES. AT WATER AND SEWER CROSSINGS, THE CROWN OF THE SEWER PIPE MUST BE AT LEAST 18" BELOW THE WATERLINE INVERT AS MEASURED BETWEEN THE OUTSIDE PIPE WALLS. WHEN THIS CONDITION CANNOT BE MET, A CLOSER INSTALLATION MAY BE PERMITTED ON A CASE BY CASE BASIS ONLY UNDER THE FOLLOWING CONDITIONS:
A) THERE IS A RECEIPT OF WRITTEN CONCURRENCE FROM THE OHIO EPA DIVISION OF DRINKING WATER, UNLESS A REMEDY FOR THE SPECIFIC CASE IS SHOWN IN THE DETAILS ON THESE PLANS.
B) SDR 26 PVC PIPE SHALL BE USED MEETING THE REQUIREMENTS OF ASTM D-2241 MATERIAL SPECIFICATIONS, ASTM D-3212 JOINT SPECIFICATION AND THE PIPE IS PRESSURE TESTED TO ITS' RATED CAPACITY PRIOR TO USE.
- 11) ALL SANITARY SEWER FORCE MAINS SHALL MEET THE FOLLOWING SPECIFICATIONS: MATERIAL-ASTM D-2241, JOINT-ASTM D-3139
- 12) IT IS THE RESPONSIBILITY OF THE CONTRACTOR TO REMOVE AND PROPERLY DISPOSE OFF-SITE ALL DEMOLISHED MATERIAL AND CONSTRUCTION DEBRIS.
- 13) CONTRACTOR SHALL VERIFY THE LOCATION OF EXISTING UTILITIES SHOWN ON PLANS PRIOR TO CONSTRUCTION.
- 14) UNLESS OTHERWISE NOTED, ALL EXISTING PUBLIC WATER LINES IN THE PROJECT AREA ARE CONSTRUCTED OF ASBESTOS CEMENT (AC) PIPE. WHEN CROSSING THE AC MAIN LINES A SPECIAL TRENCH BACKFILL OF LOW STRENGTH MORTAR APPLIES. SEE STANDARD DETAILS. DOES NOT APPLY TO AC SERVICE LINES.
- 15) ANY EXISTING DRIVE CULVERTS DAMAGED DURING CONSTRUCTION OR DETERMINED NOT SUITABLE FOR REINSTALLATION BY THE ENGINEER'S FIELD REPRESENTATIVE SHALL BE REPLACED WITH A MINIMUM 12" DIAMETER CMP OR POLYETHENE PIPE AT THE UNIT PRICE BID FOR CULVERT PIPE REPLACEMENT.

LEGEND:

----- 105 -----	EXISTING CONTOURS
----- 105 -----	PROPOSED CONTOURS
● B-1	SOIL BORING LOCATIONS
--- EX E ---	EXISTING ELECTRIC
--- E ---	PROPOSED ELECTRIC
--- EX T ---	EXISTING TELEPHONE
--- T ---	PROPOSED TELEPHONE
--- EX W ---	EXISTING WATER
--- W ---	PROPOSED WATER
--- EX G ---	EXISTING GAS LINE
--- G ---	PROPOSED GAS LINE
--- -E- ---	APPROXIMATE PROPERTY LINE
--- EX 8" SAN ---	EXISTING SANITARY SEWER
--- 8" SAN ---	PROPOSED SANITARY SEWER
--- 6" FM ---	PROPOSED FORCE MAIN & AIR RELEASE VALVE
--- EX 12" STM ---	EXISTING STORM SEWER
--- 12" STM ---	PROPOSED STORM SEWER
○ EX MH	EXISTING MANHOLE
● MH	PROPOSED MANHOLE
□ EX CB	EXISTING CATCH BASIN
■ CB	PROPOSED CATCH BASIN
φ	UTILITY POLE
EOP	EDGE OF PAVEMENT
⊕	POWER POLE
⊗ WM	WATER METER
⊗ WV	WATER VALVE
⊕ FH	FIRE HYDRANT
⊕ BM	BENCH MARK

SHEET INDEX

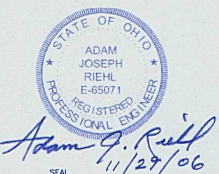
COVER SHEET	
A	LOCATION MAP
1 - 17	PLAN & PROFILE SHEETS
18 - 19	PUMP STATION DETAILS
20	PUMP STATION DETAILS
21 - 25	MISCELLANEOUS DETAILS

EXISTING UTILITIES/PERMITS:

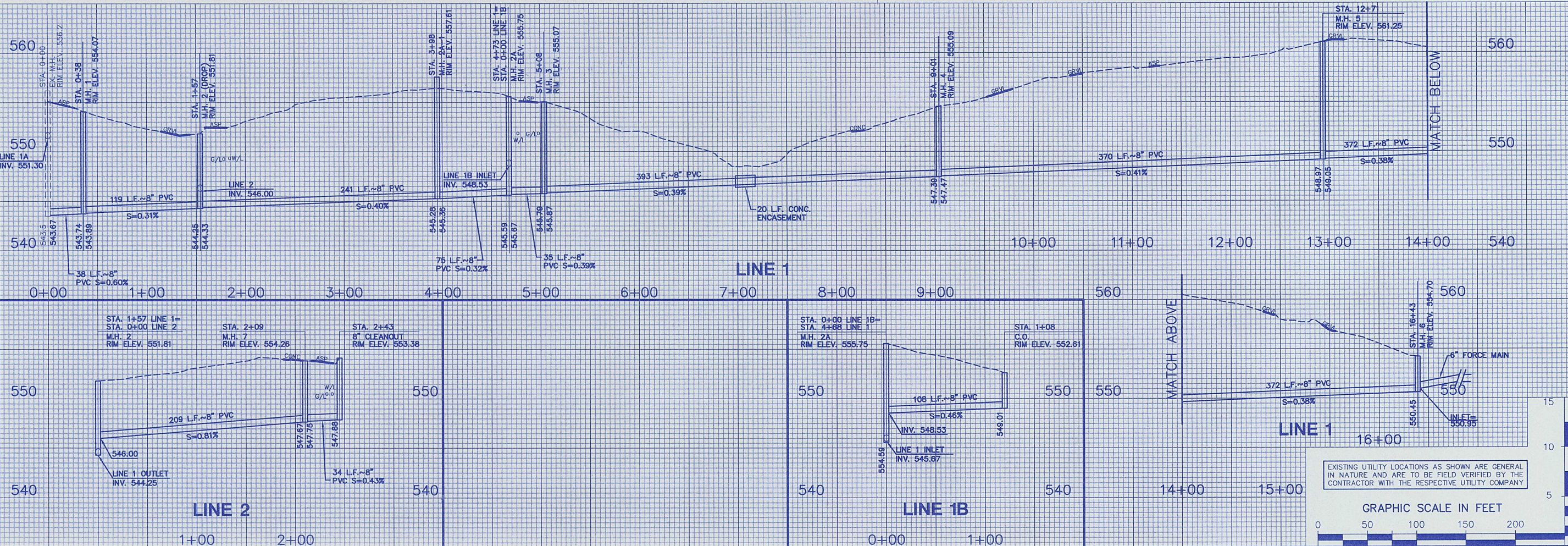
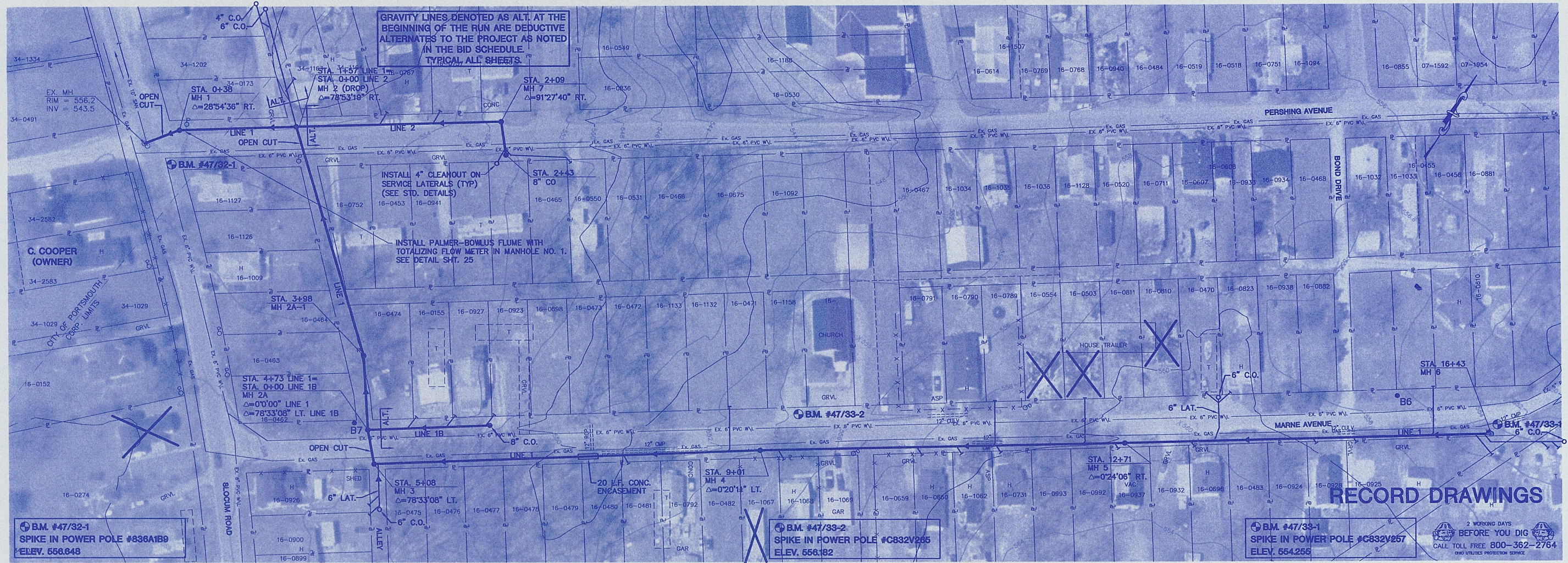
OHIO UTILITY PROTECTION SERVICE (OUPS)	(800) 362-2764
SCIOTO CO. ENGINEER-CLYDE WILLIS, PE, PS	(740) 355-8273
SCIOTO CO. SANITARY DEPARTMENT-JOE DELONG, PE	(740) 355-8241
VERIZON	(800) 362-2764
AMERICAN ELECTRIC POWER CO.	(740) 353-4131
COLUMBIA GAS OF OHIO	(740) 354-2836
OHIO DEPARTMENT OF TRANSPORTATION, DISTRICT 9	(740) 773-2691
PORTER TOWNSHIP TRUSTEES	(740) 574-4245
CITY OF PORTSMOUTH - WATERWORKS	(740) 354-4553
SCIOTO WATER ONE - LUCASVILLE	(740) 259-2301

No.	DATE	REVISION
0	12/2003	FOR APPROVAL
1	01/04	OEPA COMMENT
2	3/2005	BIDDING
3	11/2006	RECORD DRAWINGS

PROJECT No: 57128



Adam J. Riehl
11/27/06



No.	DATE	REVISION
0	12/03	FOR APPROVAL
1	3/05	BIDDING
2	11/06	RECORD DRAWINGS

PROJECT No: 57128
 DATE: 11/02
 SCALE: 1"=50'
 DES: AJR
 DR: GKF
 CKD: PVA



WOOLPERT LLP
 1200 Corporate Court
 Ashland, Kentucky
 41102-5336
 606.329.1948
 FAX: 606.324.0147



SCIOTOVILLE AREA SAN. SEWER EXTENSIONS
 RIGRISH, CAMP BENNETT AND HIGHLAND BEND
 SCIOTO COUNTY, OHIO
PLAN AND PROFILE

EXISTING UTILITY LOCATIONS AS SHOWN ARE GENERAL IN NATURE AND ARE TO BE FIELD VERIFIED BY THE CONTRACTOR WITH THE RESPECTIVE UTILITY COMPANY

GRAPHIC SCALE IN FEET
 0 50 100 150 200

1

APPROX.
100' FLOOD
ELEV 540

No.	DATE	REVISION
0	12/03	FOR APPROVAL
1	3/05	BIDDING
2	11/06	RECORD DRAWINGS

PROJECT No.	DATE	SCALE	DES.	DR.	CKD.
5712B	11/02	1"=300'	AJR	GKF	PVA

WOOLPERT LLP
1200 Corporate Court
Ashland, Kentucky
41102-5336
606.329.1948
606.324.0147



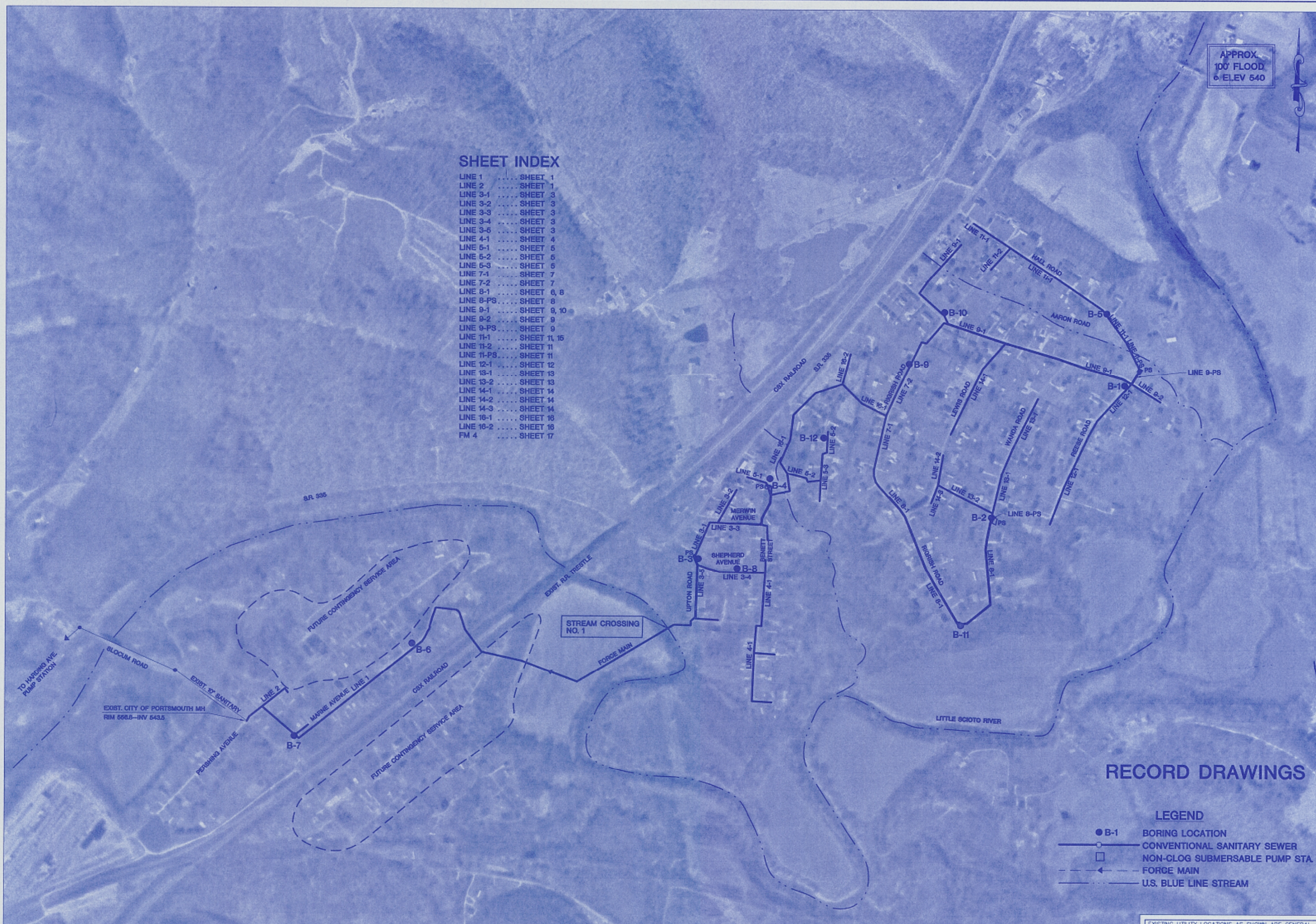
SCIOTOVILLE AREA SAN. SEWER EXTENSIONS
RIGRISH, CAMP BENNETT AND HIGHLAND BEND
SCIOTO COUNTY, OHIO
INDEX AND SITE MAP

SHEET NO.

A

SHEET INDEX

LINE 1	SHEET 1
LINE 2	SHEET 1
LINE 3-1	SHEET 3
LINE 3-2	SHEET 3
LINE 3-3	SHEET 3
LINE 3-4	SHEET 3
LINE 3-6	SHEET 3
LINE 4-1	SHEET 4
LINE 5-1	SHEET 5
LINE 5-2	SHEET 5
LINE 5-3	SHEET 5
LINE 7-1	SHEET 7
LINE 7-2	SHEET 7
LINE 8-1	SHEET 6, 8
LINE 8-PS	SHEET 8
LINE 9-1	SHEET 9, 10
LINE 9-2	SHEET 9
LINE 9-PS	SHEET 9
LINE 11-1	SHEET 11, 16
LINE 11-2	SHEET 11
LINE 11-PS	SHEET 11
LINE 12-1	SHEET 12
LINE 13-1	SHEET 13
LINE 13-2	SHEET 13
LINE 14-1	SHEET 14
LINE 14-2	SHEET 14
LINE 14-3	SHEET 14
LINE 16-1	SHEET 16
LINE 16-2	SHEET 16
FM 4	SHEET 17



RECORD DRAWINGS

LEGEND

● B-1	BORING LOCATION
—○—	CONVENTIONAL SANITARY SEWER
□	NON-CLOG SUBMERSABLE PUMP STA.
—▲—	FORCE MAIN
—·—·—	U.S. BLUE LINE STREAM

EXISTING UTILITY LOCATIONS AS SHOWN ARE GENERAL IN NATURE AND ARE TO BE FIELD VERIFIED BY THE CONTRACTOR WITH THE RESPECTIVE UTILITY COMPANY

© 2006 Woolpert, Inc. All rights reserved. No part of this drawing may be reproduced without the written consent of Woolpert, Inc.