



MINFORD TELEPHONE COMPANY

P. O. BOX 181, MINFORD, OHIO 45653 • PHONE: (740) 820-2151 • FAX: (740) 820-2222

January 29, 2007

Mr. Mike Weeks, P.E., P.S.
Engineering Project Manager
TranSystems Corporation
5747 Perimeter Drive
Suite 240
Dublin, OH 43017

RECEIVED

FEB 05 2007



Project Number:	_____
Original filed as:	_____
CC:	_____

RE: SCI-823-6.81, PID 19415
Portsmouth Bypass Phase 1, Stage 1 Plans

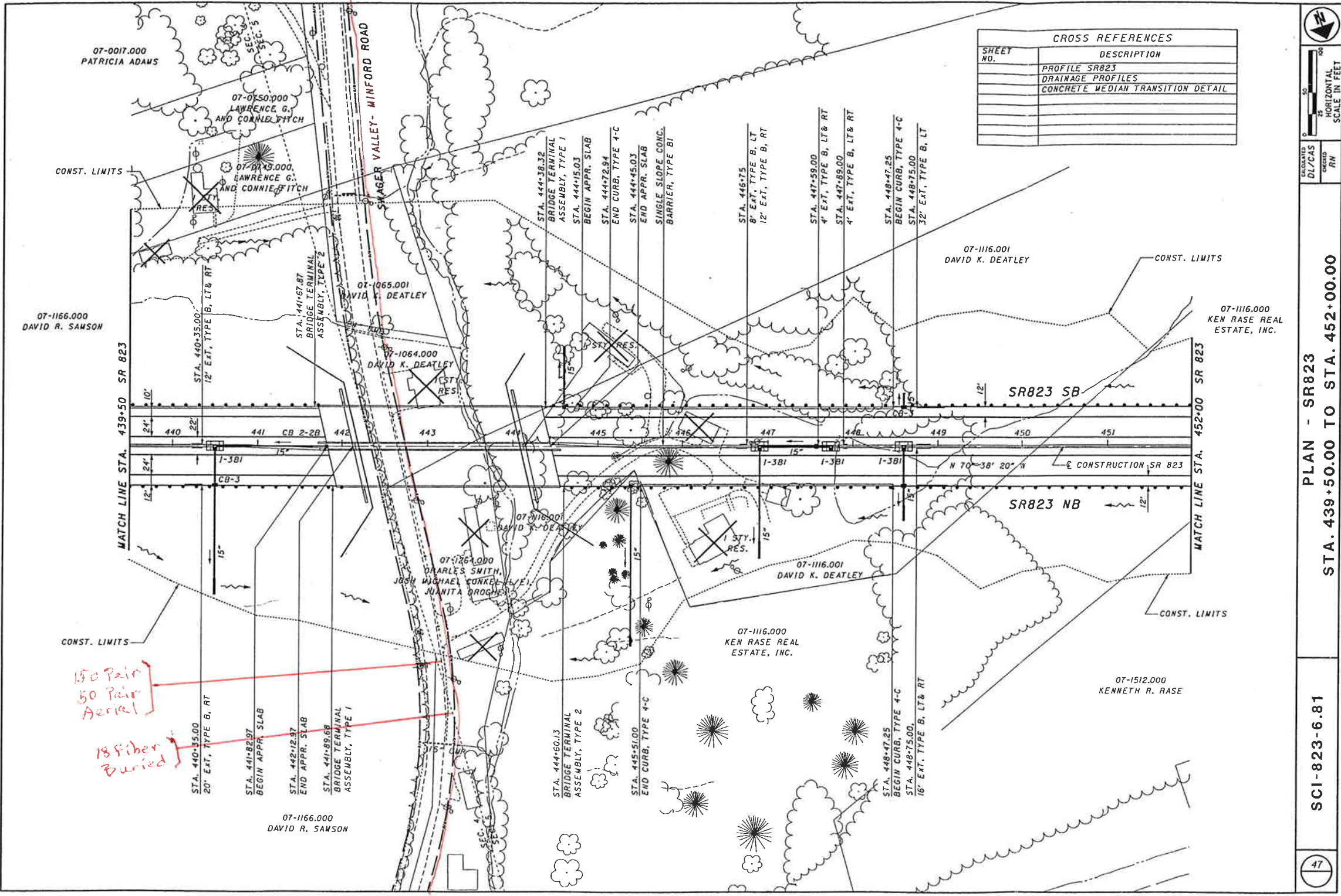
Dear Mr. Weeks,

Please find enclosed the pages of the Portsmouth Bypass that will affect Minford Telephone Co. We have marked the prints as to where and what type of facilities we have. We also have a contract with AEP on joint use of their poles. AEP owns most all poles throughout our territory. If you need any locates, please contact our office at 740-820-2109 and we will locate our facilities for you.

Should you have any questions, please contact me at 740-820-2151 or e-mail pmcgraw@falcon1.net.

Sincerely,

Paula J. McGraw
General Manager



CROSS REFERENCES	
SHEET NO.	DESCRIPTION
	PROFILE SR823
	DRAINAGE PROFILES
	CONCRETE MEDIAN TRANSITION DETAIL



150 Pair
50 Pair
Aerial

18 Fiber
Buried

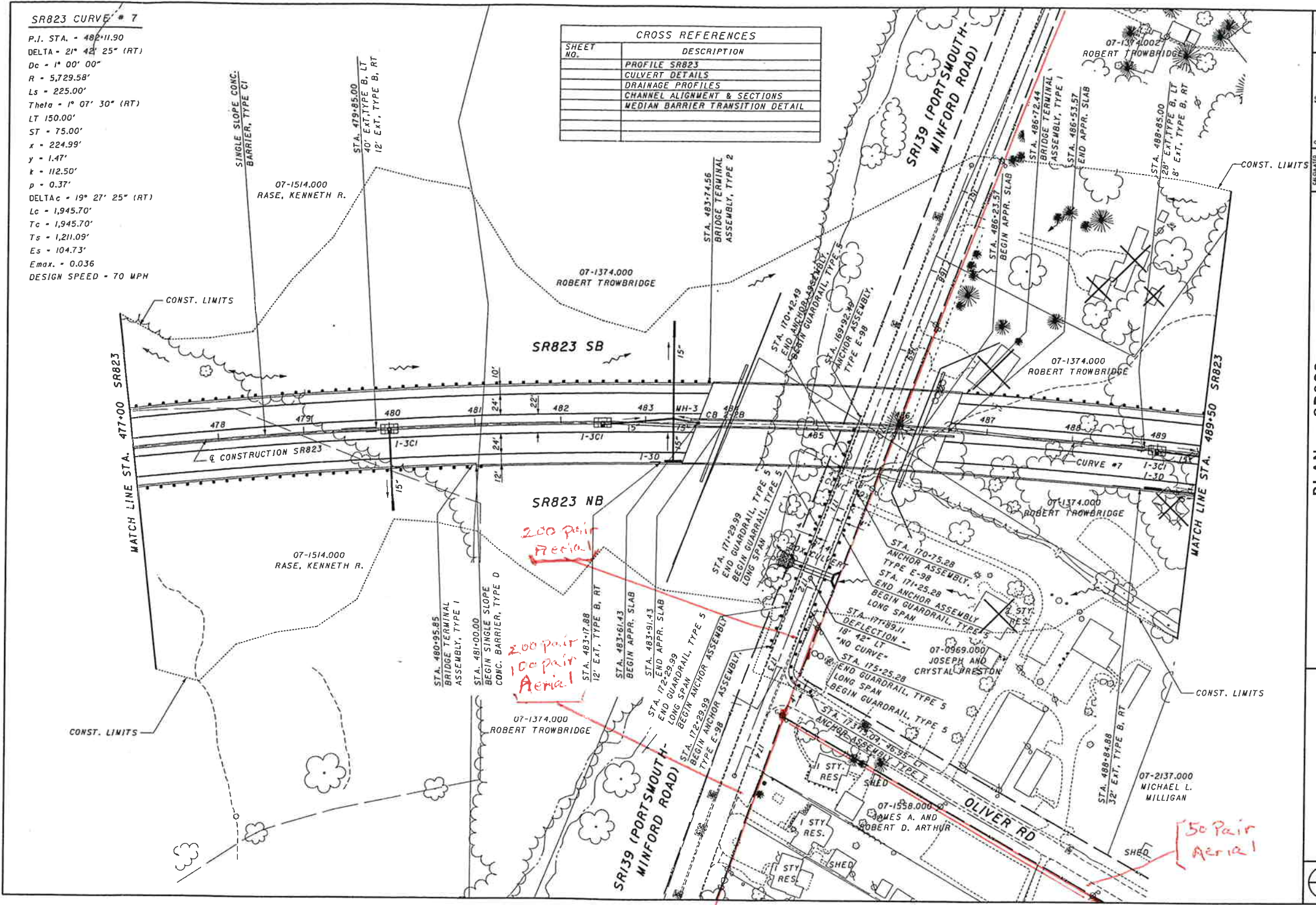
PLAN - SR823
STA. 439+50.00 TO STA. 452+00.00

SCI-823-6.81

SR823 CURVE # 7

P.I. STA. = 482+11.90
 DELTA = 21° 42' 25" (RT)
 Dc = 1° 00' 00"
 R = 5,729.58'
 Ls = 225.00'
 Theta = 1° 07' 30" (RT)
 LT = 150.00'
 ST = 75.00'
 x = 224.99'
 y = 1.47'
 k = 112.50'
 p = 0.37'
 DELTAc = 19° 27' 25" (RT)
 Lc = 1,945.70'
 Tc = 1,945.70'
 Ts = 1,211.09'
 Es = 104.73'
 Emax = 0.036
 DESIGN SPEED = 70 MPH

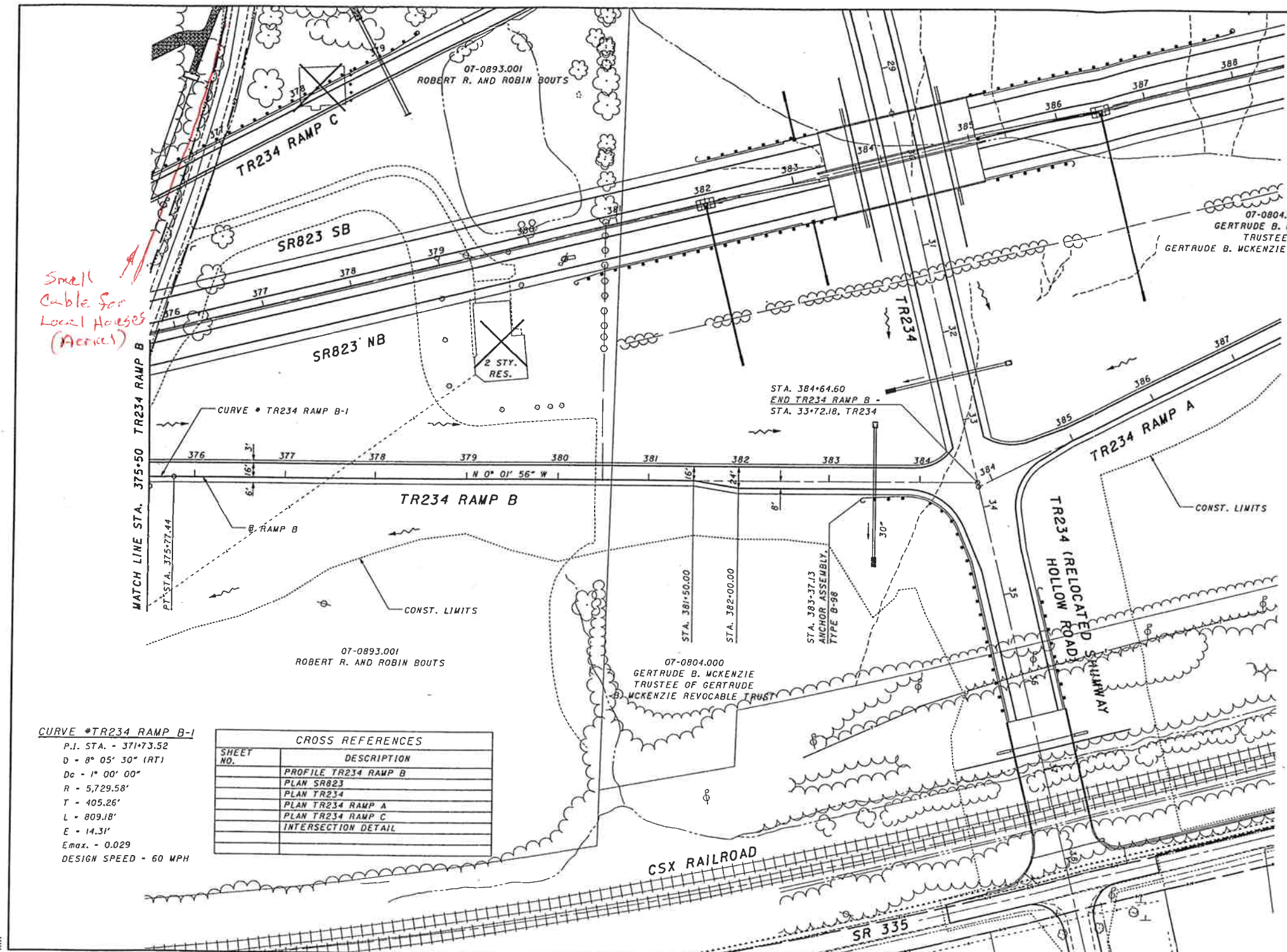
CROSS REFERENCES	
SHEET NO.	DESCRIPTION
	PROFILE SR823
	CULVERT DETAILS
	DRAINAGE PROFILES
	CHANNEL ALIGNMENT & SECTIONS
	MEDIAN BARRIER TRANSITION DETAIL



PLAN - SR823
 STA. 477+00.00 TO STA. 489+50.00

SCI-823-6.81

Small
Cable for
Local Houses
(Access)



CURVE #TR234 RAMP B-1
 P.I. STA. - 371+73.52
 D - 8° 05' 30" (RT)
 Dc - 1° 00' 00"
 R - 5,729.58'
 T - 405.26'
 L - 809.18'
 E - 14.31'
 Emax. - 0.029
 DESIGN SPEED - 60 MPH

CROSS REFERENCES	
SHEET NO.	DESCRIPTION
	PROFILE TR234 RAMP B
	PLAN SR823
	PLAN TR234
	PLAN TR234 RAMP A
	PLAN TR234 RAMP C
	INTERSECTION DETAIL

N

HORIZONTAL SCALE IN FEET

CALCULATED	DL
CHECKED	RN

PLAN - TOWNSHIP ROAD 234 RAMP B

STA. 375+50.00 TO STA. 384+64.60

SCI-823-6.81

69

CURVE * CR28 - 1

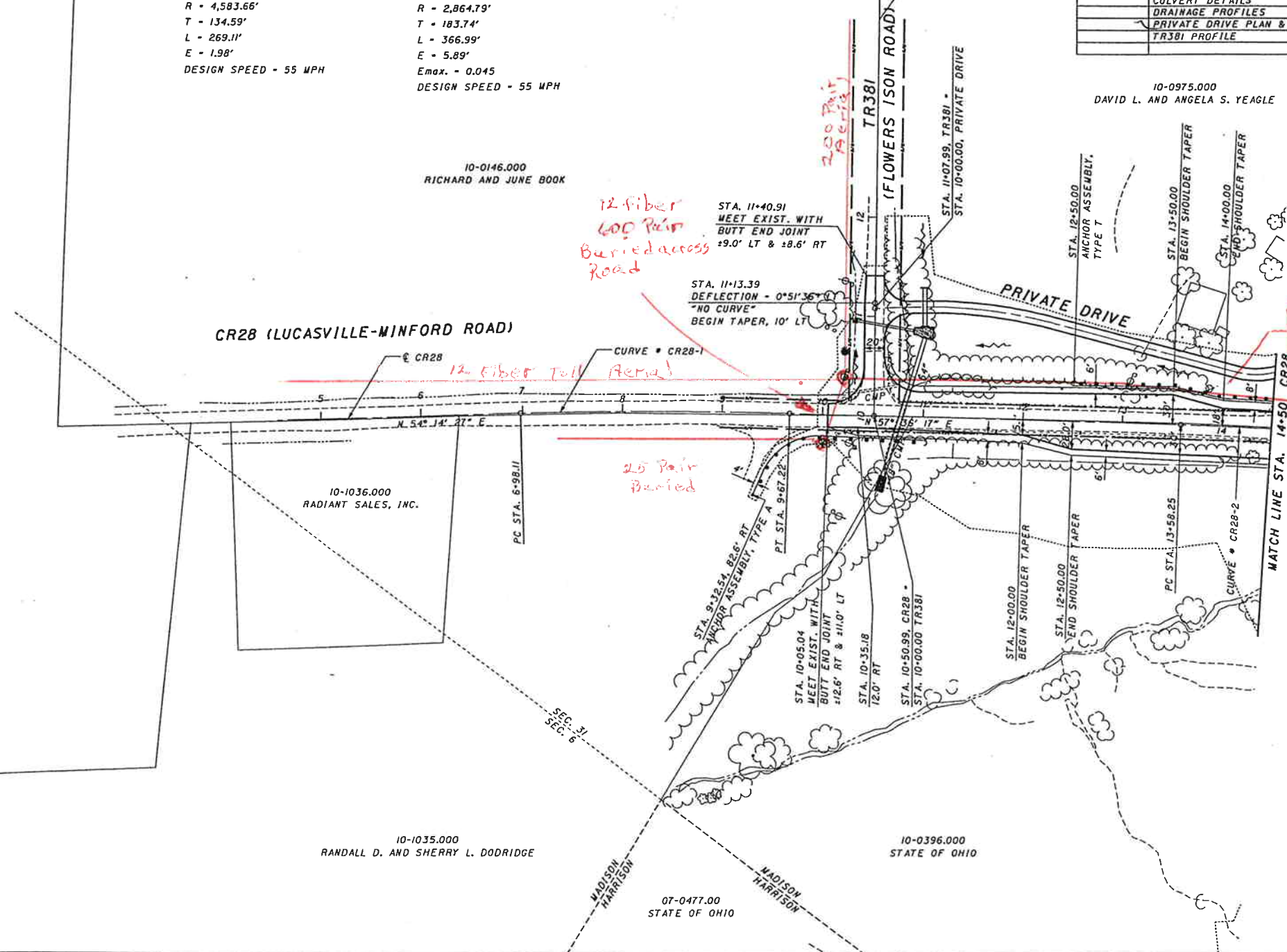
P.I. STA. - 8+32.71
 DELTA - 3° 21' 50" (RT)
 Dc - 1' 15' 00"
 R - 4,583.66'
 T - 134.59'
 L - 269.11'
 E - 1.98'
 DESIGN SPEED - 55 MPH

CURVE * CR28 - 2

P.I. STA. - 15+41.99
 DELTA - 7° 20' 23" (RT)
 Dc - 2° 00' 00"
 R - 2,864.79'
 T - 183.74'
 L - 366.99'
 E - 5.89'
 Emax. - 0.045
 DESIGN SPEED - 55 MPH

CROSS REFERENCES	
SHEET NO.	DESCRIPTION
	PROFILE CR28
	PROFILE FLOWERS ISON ROAD (TR381)
	INTERSECTION DETAILS
	CULVERT DETAILS
	DRAINAGE PROFILES
	PRIVATE DRIVE PLAN & PROFILE
	TR381 PROFILE

10-0975.000
 DAVID L. AND ANGELA S. YEAGLE



CR28 (LUCASVILLE-MINFORD ROAD)

TR381
 (FLOWERS ISON ROAD)

PRIVATE DRIVE

10-1036.000
 RADIANT SALES, INC.

10-1035.000
 RANDALL D. AND SHERRY L. DODRIDGE

10-0396.000
 STATE OF OHIO

07-0477.00
 STATE OF OHIO

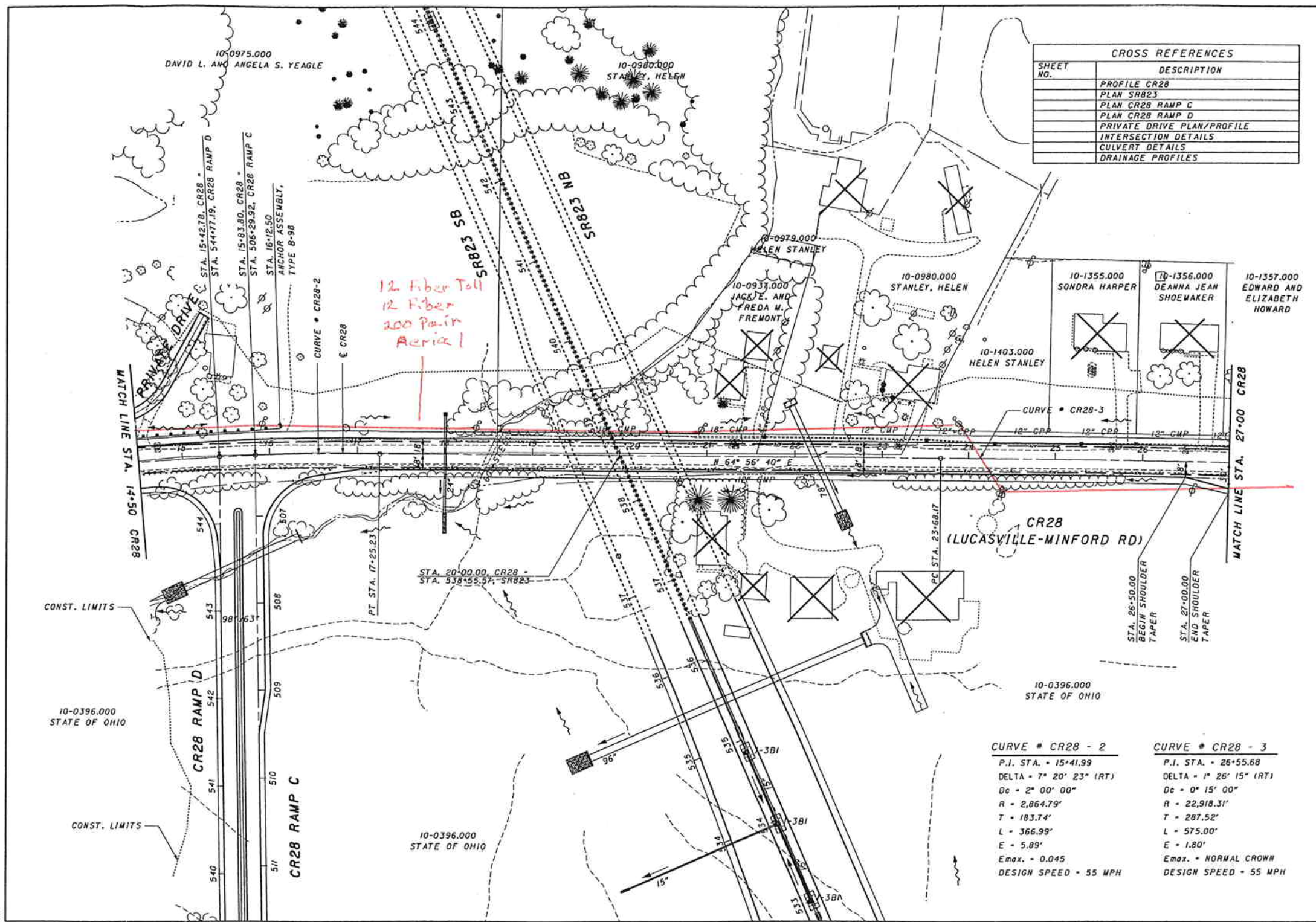
PLAN - CR 28 (LUCASVILLE -MINFORD ROAD)
 STA. 10+05.04 TO STA. 14+50.00

SCI-823-6.81



CALCULATED BY DL CR28/RN

CROSS REFERENCES	
SHEET NO.	DESCRIPTION
	PROFILE CR28
	PLAN SR823
	PLAN CR28 RAMP C
	PLAN CR28 RAMP D
	PRIVATE DRIVE PLAN/PROFILE
	INTERSECTION DETAILS
	CULVERT DETAILS
	DRAINAGE PROFILES



12 Fiber Toll
12 Fiber
200 Pair
Aerial 1

<p>CURVE # CR28 - 2</p> <p>P.I. STA. - 15+41.99</p> <p>DELTA - 7° 20' 23" (RT)</p> <p>Dc - 2° 00' 00"</p> <p>R - 2,864.79'</p> <p>T - 183.74'</p> <p>L - 366.99'</p> <p>E - 5.89'</p> <p>E_{max.} - 0.045</p> <p>DESIGN SPEED - 55 MPH</p>	<p>CURVE # CR28 - 3</p> <p>P.I. STA. - 26+55.68</p> <p>DELTA - 1° 26' 15" (RT)</p> <p>Dc - 0° 15' 00"</p> <p>R - 22,918.31'</p> <p>T - 287.52'</p> <p>L - 575.00'</p> <p>E - 1.80'</p> <p>E_{max.} - NORMAL CROWN</p> <p>DESIGN SPEED - 55 MPH</p>
---	---

PLAN - CR28 (LUCASVILLE-MINFORD ROAD)
STA. 14+50.00 TO STA. 27+00.00

SCI-823-6.81

CURVE # CR28 - 3

P.I. STA. = 26+55.68
 DELTA = 1° 26' 15" (RT)
 Dc = 0° 15' 00"
 R = 22,918.31'
 T = 287.52'
 L = 575.00'
 E = 1.80'
 Emax = NORMAL CROWN
 DESIGN SPEED = 55 MPH

CROSS REFERENCES

SHEET NO.	DESCRIPTION
	PROFILE CR28
	PLAN CR28 RAMP A
	PLAN CR28 RAMP B
	INTERSECTION DETAIL
	DRAINAGE PROFILES



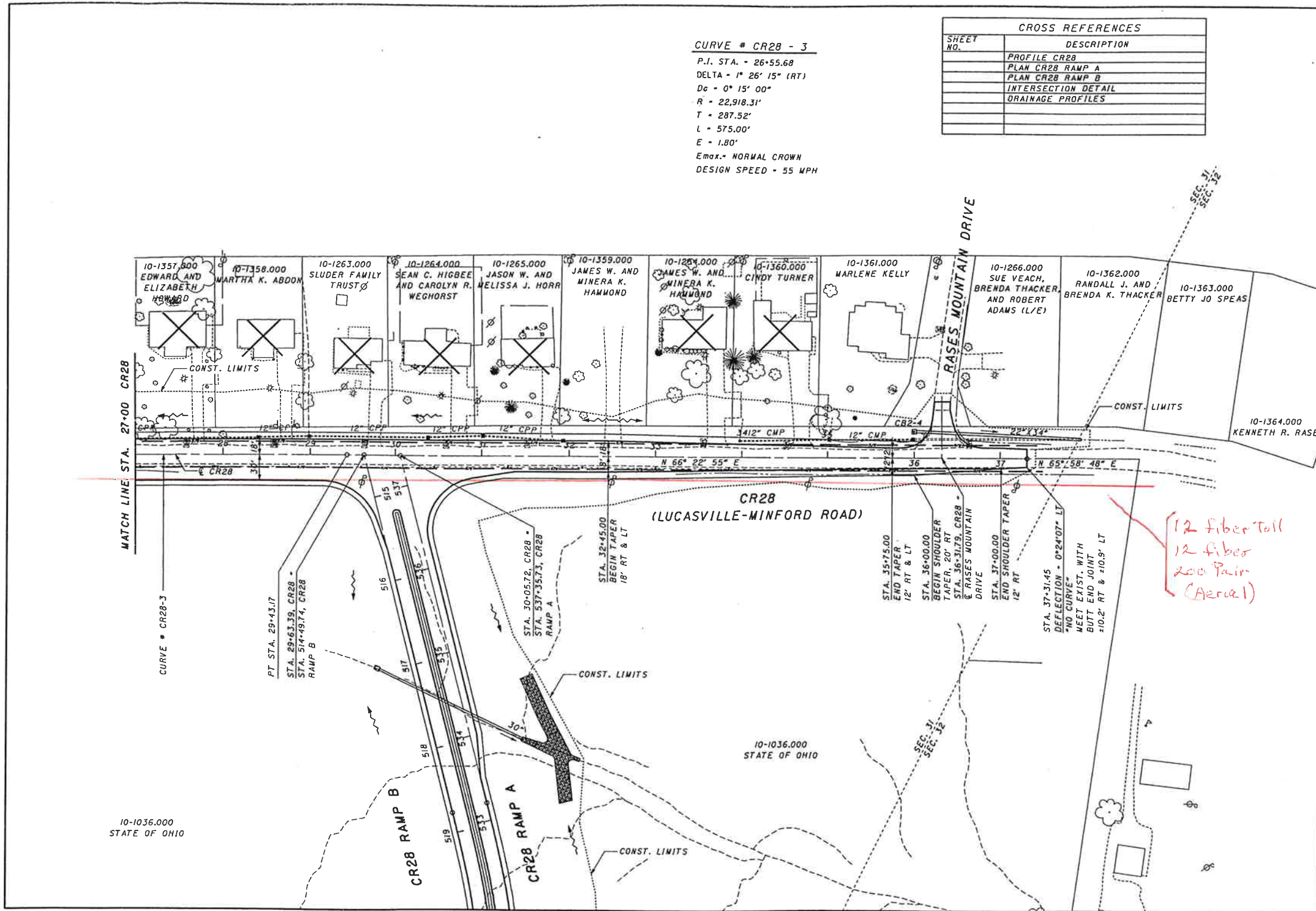
0 25 50 100
 HORIZONTAL SCALE IN FEET

CALCULATED DL
 CHECKED RN

PLAN - CR 28 (LUCASVILLE-MINFORD ROAD)
 STA. 27+00.00 TO STA. 37+31.45

SCI-823-6.81

399



*12 fiber toll
 12 fiber
 200 Pair
 (Aerial)*

10-1036.000
 STATE OF OHIO

10-1036.000
 STATE OF OHIO

MATCH LINE STA. 27+00 CR28

CURVE # CR28-3

PT. STA. 29+43.17
 STA. 29+53.39, CR28 -
 STA. 514+49.74, CR28
 RAMP B

STA. 30+05.72, CR28 -
 STA. 537+35.73, CR28
 RAMP A

STA. 32+45.00
 BEGIN TAPER
 18' RT & LT

STA. 35+75.00
 END TAPER
 12' RT & LT

STA. 36+00.00
 BEGIN SHOULDER
 TAPER, 20' RT
 STA. 36+31.79, CR28 -
 RASES MOUNTAIN
 DRIVE

STA. 37+00.00
 END SHOULDER TAPER
 12' RT

STA. 37+31.45
 DEFLECTION = 0°24'07" LT
 "NO CURVE"
 MEET EXIST. WITH
 BUTT END JOINT
 ±10.2' RT & ±10.9' LT

±10.2' RT & ±10.9' LT

CR28 RAMP B

CR28 RAMP A

RASES MOUNTAIN DRIVE

CR28
 (LUCASVILLE-MINFORD ROAD)

10-1357.800 EDWARD AND ELIZABETH HOWARD
 10-1358.000 MARTHA K. ABDON
 10-1263.000 SLUDER FAMILY TRUST
 10-1264.000 SEAN C. HIGBEE AND CAROLYN R. WEGHORST
 10-1265.000 JASON W. AND MELISSA J. HERR
 10-1359.000 JAMES W. AND MINERA K. HAMMOND
 10-1284.000 JAMES W. AND MINERA K. HAMMOND
 10-1360.000 CINDY TURNER
 10-1361.000 MARLENE KELLY
 10-1266.000 SUE VEACH, BRENDA THACKER, AND ROBERT ADAMS (L/E)
 10-1362.000 RANDALL J. AND BRENDA K. THACKER
 10-1363.000 BETTY JO SPEAS
 10-1364.000 KENNETH R. RASE

CONST. LIMITS

CONST. LIMITS

CONST. LIMITS

CONST. LIMITS

SEC. 31
 SEC. 32

SEC. 31
 SEC. 32

516
 517
 518
 519
 520
 521
 522
 523
 524
 525

3412' CMP

12' CMP

22' X 34'

N 66° 22' 55" E

N 65° 58' 48" E