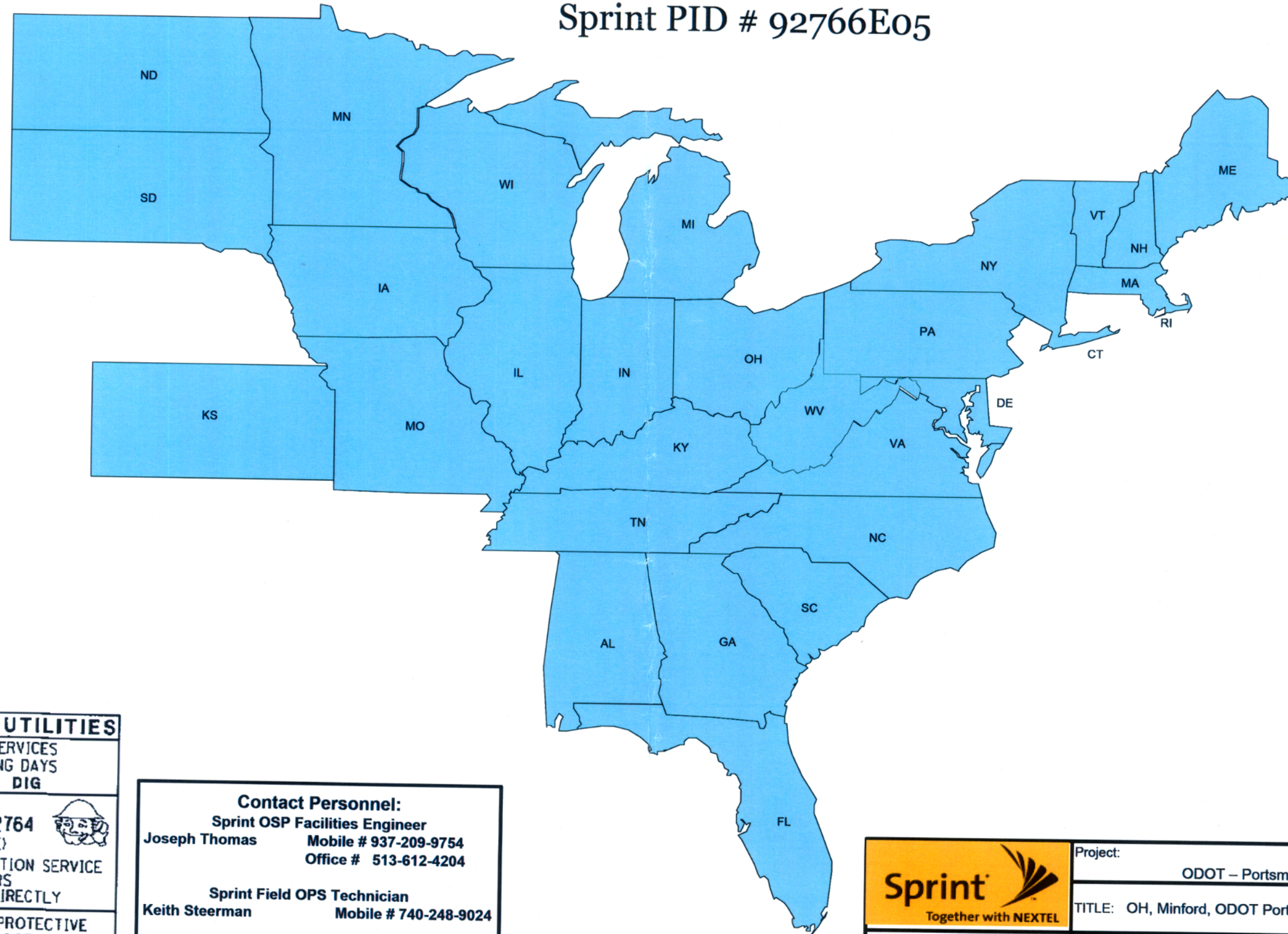




Field Services Support

Facilities Engineering / OSP-East

Sprint PID # 92766E05



UNDERGROUND UTILITIES

CONTACT BOTH SERVICES
CALL TWO WORKING DAYS
BEFORE YOU DIG

CALL **1-800-362-2764**
(TOLL FREE)

OHIO UTILITIES PROTECTION SERVICE
NON-MEMBERS
MUST BE CALLED DIRECTLY

OIL & GAS PRODUCERS PROTECTIVE
SERVICE CALL: **1-800-925-0988**

Contact Personnel:
Sprint OSP Facilities Engineer
Joseph Thomas Mobile # 937-209-9754
 Office # 513-612-4204

Sprint Field OPS Technician
Keith Steerman Mobile # 740-248-9024

OFFICE

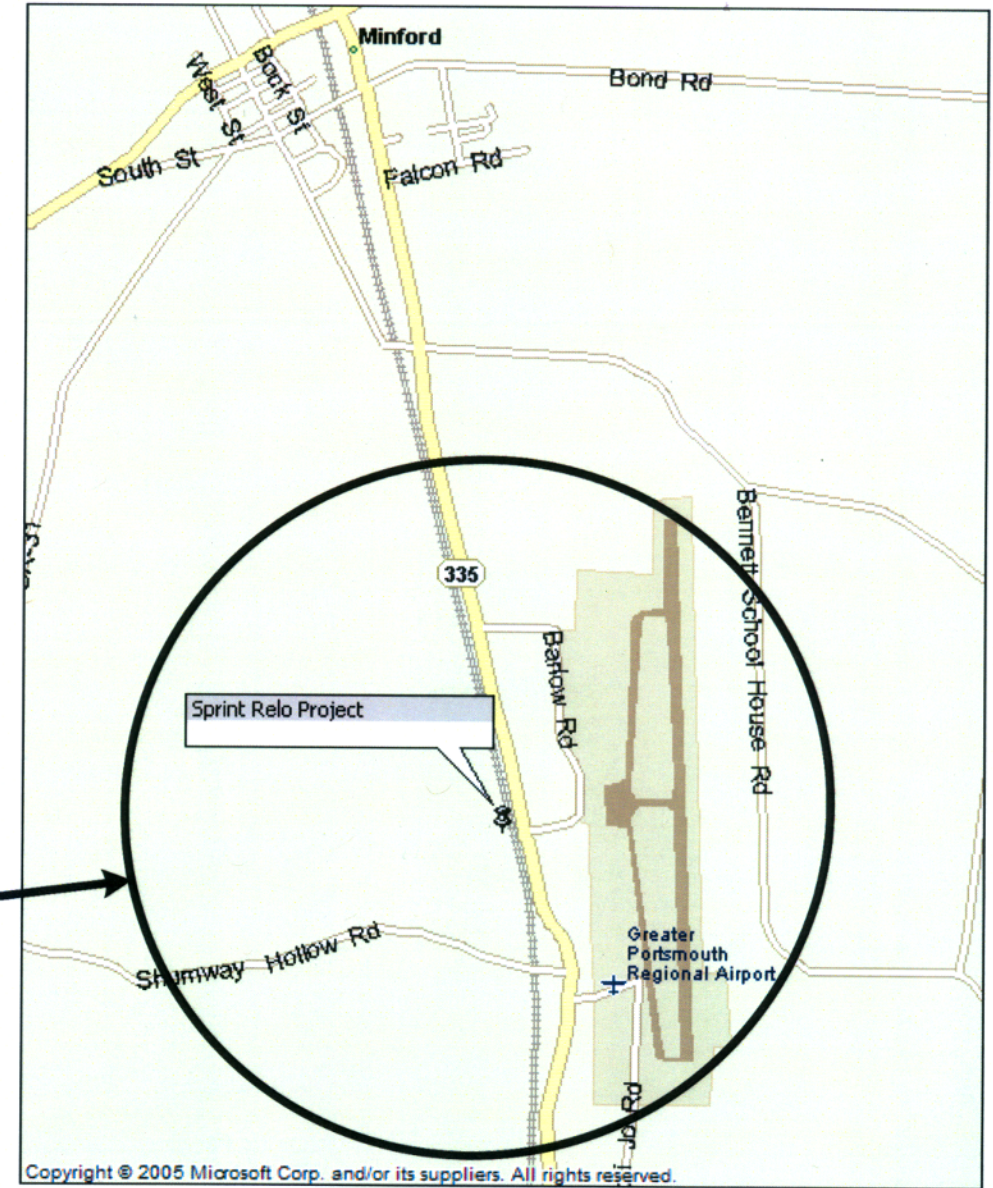
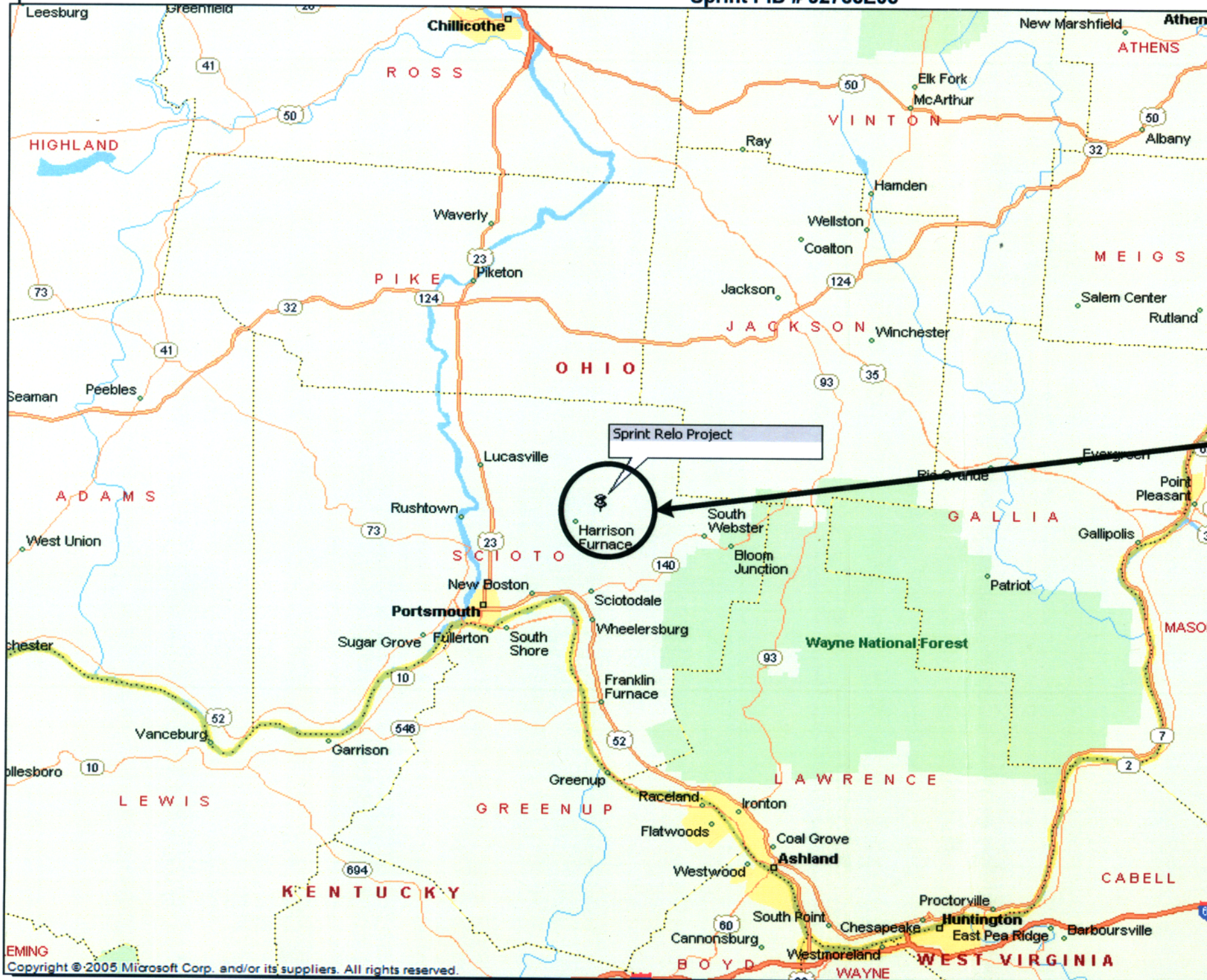


| | |
|---|--|
| Project: ODOT – Portsmouth Bypass, - PID# 92766E05 | |
| TITLE: OH, Minford, ODOT Portsmouth Bypass FOC Protection | |
| Engineer: Joseph Thomas | SIZE: Columbus, OH to Ashland, KY |
| Cover Page | SCALE: Date: 11/11/2010 SHEET 01 of 05 |

| | |
|---------------------------|---------|
| DWG NO: NTRWK 140-881-148 | REV: 00 |
|---------------------------|---------|

Project Location

OH, Minford
 ODOT Portsmouth Bypass FOC Protection
 CSX Mile Post 8.5
 Sprint PID # 92766E05



| | | | |
|-----------------------------|---|---------------------------|-----------------|
| <p>Together with NEXTEL</p> | Project: ODOT – Portsmouth Bypass, - PID# 92766E05 | | |
| | TITLE: OH, Minford, ODOT Portsmouth Bypass FOC Protection | | |
| Engineer: Joseph Thomas | SIZE: Columbus, OH to Ashland, KY | DWG NO: NTRWK 140-881-148 | REV: 00 |
| Location Map | SCALE: | Date: 11/11/2010 | SHEET: 02 of 05 |

STATE OF OHIO

Plan Details

DEPARTMENT OF TRANSPORTATION

SCI-823-6.81

MADISON & HARRISON TOWNSHIPS

SCIOTO COUNTY

Scope of Work

This project funds for contract labor and material to protect Sprint's fiber optic cable (FOC) in direct conflict with the construction of the State of Ohio's Dept of Transportation's "Portsmouth Bypass Project (SCI-823-6.81)" Minford, OH-Scioto County, CSX Mile Post 8.5 This affects Sprint Wire line Backbone, Columbus, OH to Ashland, KY Route, NTWRK 140-881-148 Sheets 01 of 01, Sprint Station 28+63 to 30+63. Sprint's direct buried FOC and the CSX Railroad Right of Way will be crossed by the new highway and must be protected from this highway construction and future maintenance access under the new highway provided.

This protection project will require excavating and exposing approximately 200' of Sprint's working Fiber Optic Cable (FOC), installation of 200' of 4" split steel pipe, placement of 200' of 1 1/4" HDPE SDR-13 Inner Duct conduit within, and lowering the FOC 18" from Sprint Station 30+00 to 30+63.

Plan Notes: Construction:

1. Mobilization
2. Dig up and expose approx. 200' of existing FOC at STA 28+63 to 30+63, which is currently buried at approx. 4' deep.
3. Place 200' of 4" split steel pipe over exposed FOC and place 200' of 1 1/4" Inner Duct within the split steel pipe at STA 28+63 to 30+63.
4. Lower new split pipe and FOC, 18" from Sprint Station 30+00 to Station 30+63. Excavation elevations approaching and exiting this lowered area must be gradual.
4. Place EMS marker balls on either end of the split steel pipe and backfill trench to within 1/2 of the depth, then place warning ribbon the length of the excavation.
5. Backfill all open trench locations @ 97% compaction, grade to existing condition or better. Place warning signs and posts as necessary.

ODOT Contact



Randy E. Wilson
ODOT District 9 Utilities Coordinator
1-888-819-8501 ext. 774-9075 (Ohio only)
1-740-774-9075
E-mail: randy.wilson@dot.state.oh.us

Contractor Provided Material List

1. 4" Galvanized Split Steel Pipe with hardware = 200'
2. 1 1/4" Inner Duct = 200'

Sprint Provided Material List

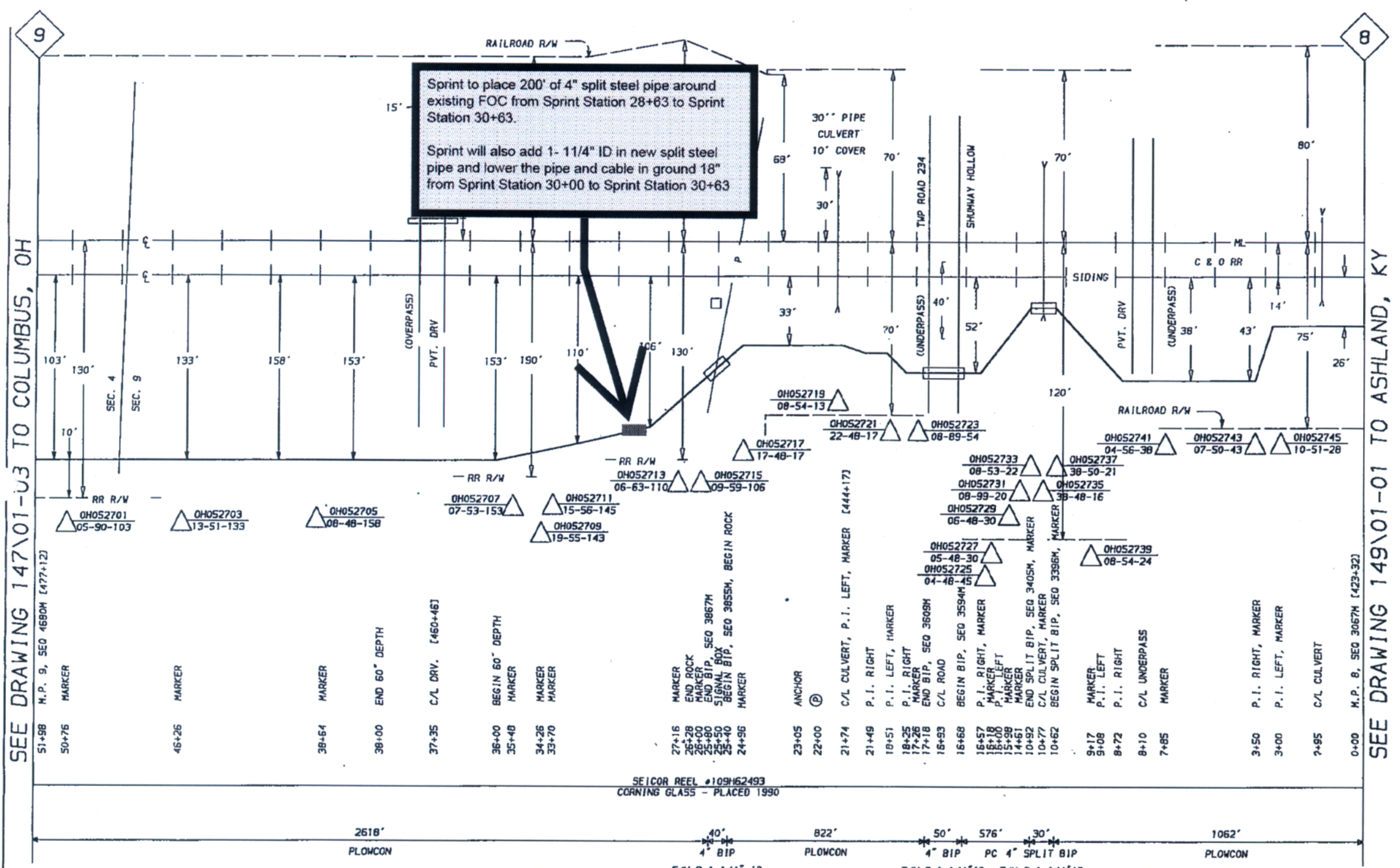
2. Warning Tape for Trench
3. EMS Marker Balls for Pipe ends
4. Marker Posts & Warning Signs

| UNDERGROUND UTILITIES | | |
|---|---------------------------------------|---|
| CONTACT BOTH SERVICES CALL TWO WORKING DAYS BEFORE YOU DIG | | |
|  | CALL 1-800-362-2764 (TOLL FREE) |  |
| OHIO UTILITIES PROTECTION SERVICE NON-MEMBERS MUST BE CALLED DIRECTLY | | |
| OIL & GAS PRODUCERS PROTECTIVE SERVICE CALL: 1-800-925-0988 | | |



| | | | |
|---|-----------------------------------|---------------------------|-----------------|
| Project: ODOT - Portsmouth Bypass, - PID# 92766E05 | | | |
| TITLE: OH, Minford, ODOT Portsmouth Bypass FOC Protection | | | |
| Engineer: Joseph Thomas | SIZE: Columbus, OH to Ashland, KY | DWG NO: NTWRK 140-881-148 | REV: 00 |
| Plan Details | SCALE: | Date: 11/11/2010 | SHEET: 03 of 05 |

| REVISIONS | | | |
|-----------|---|----------------|----------------|
| ISSUE | DESCRIPTION | DRAFTING/APPD | END/APPD |
| 01 | AS BUILT PER WBS 140002-0016025 & V.O. C9227201 NTRK140-2388-90-C | 06-12-90 CC | 06-12-90 CS |
| | | 0019504 | |



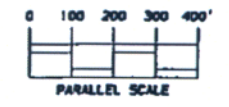
SEE DRAWING 147\01-U3 TO COLUMBUS, OH

SEE DRAWING 149\01-01 TO ASHLAND, KY



PROPRIETARY INFORMATION
NOT FOR DISCLOSURE OR REPRODUCTION

NOTE:
FOR LOCATION OF BURIED UTILITIES, CONTACT OHIO UTILITIES PROTECTION SERVICE, 1-800-362-2764 48 HOURS PRIOR TO CONSTRUCTION



OHIO
SCIOTO COUNTY
HARRISON TOWNSHIP



Engineer: Joseph Thomas
Original As-Built

| | | | |
|---|-------------------|-------|----------|
| Project: ODOT - Portsmouth Bypass, - PID# 92766E05 | | | |
| TITLE: OH, Minford, ODOT Portsmouth Bypass FOC Protection | | | |
| SIZE | DWG NO | REV | |
| Columbus, OH to Ashland, KY | NTWRK 140-881-148 | 00 | |
| SCALE | Date: 11/11/2010 | SHEET | 04 of 05 |



0 25 50 100
HORIZONTAL
SCALE IN FEET

CALCULATED DL
CHECKED RN

PLAN - TOWNSHIP ROAD 234 AND CR 540
STA. 32+00.00 TO STA. 40+87.00

SCI-823-6.81

116
752

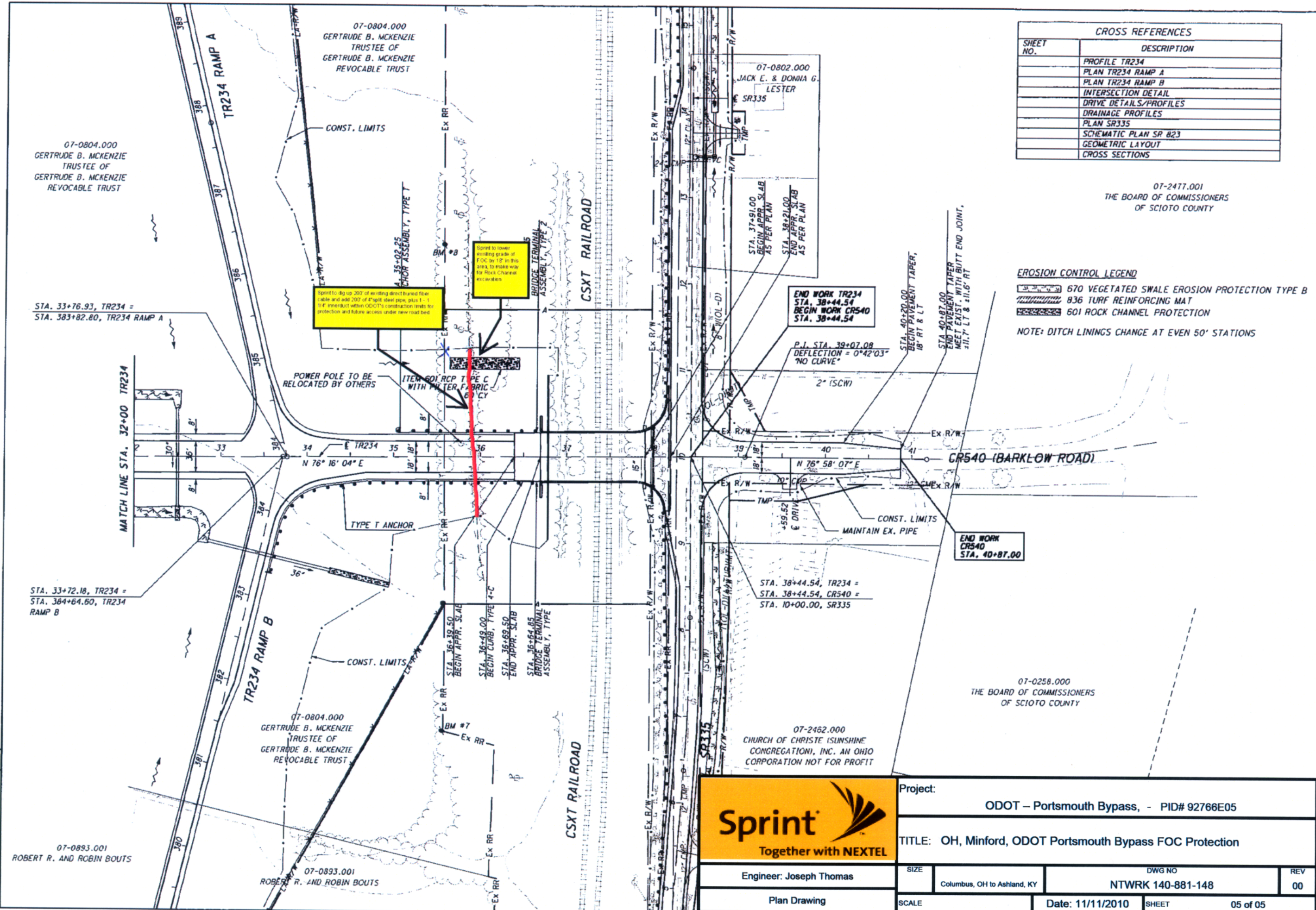
| CROSS REFERENCES | |
|------------------|------------------------|
| SHEET NO. | DESCRIPTION |
| | PROFILE TR234 |
| | PLAN TR234 RAMP A |
| | PLAN TR234 RAMP B |
| | INTERSECTION DETAIL |
| | DRIVE DETAILS/PROFILES |
| | DRAINAGE PROFILES |
| | PLAN SR335 |
| | SCHEMATIC PLAN SR 823 |
| | GEOMETRIC LAYOUT |
| | CROSS SECTIONS |

07-2477.001
THE BOARD OF COMMISSIONERS
OF SCIOTO COUNTY

EROSION CONTROL LEGEND

- 670 VEGETATED SWALE EROSION PROTECTION TYPE B
- 836 TURF REINFORCING MAT
- 601 ROCK CHANNEL PROTECTION

NOTE: DITCH LININGS CHANGE AT EVEN 50' STATIONS



Project: ODOT - Portsmouth Bypass, - PID# 92766E05

TITLE: OH, Minford, ODOT Portsmouth Bypass FOC Protection

Engineer: Joseph Thomas

| | | |
|-----------------------------|-------------------|-----|
| SIZE | DWG NO | REV |
| Columbus, OH to Ashland, KY | NTWRK 140-881-148 | 00 |

Plan Drawing

| | | | |
|-------|------------------|-------|----------|
| SCALE | Date: 11/11/2010 | SHEET | 05 of 05 |
|-------|------------------|-------|----------|

USER: r001.dwt, PLOT DATE: 7/29/2008 12:10:55 PM, REVISION DATE: 7/29/2008, MODEL: Sheet1