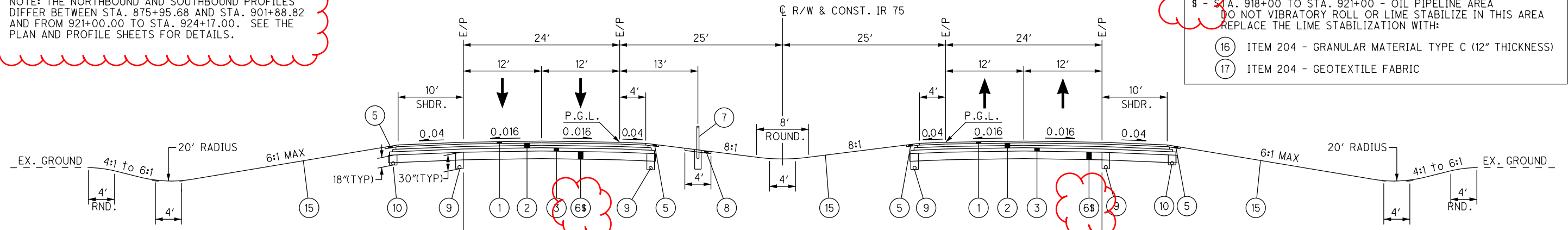
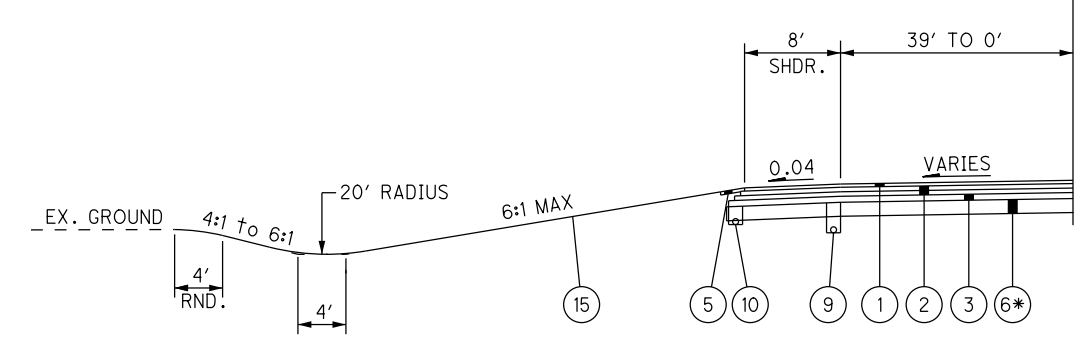


NOTE: THE NORTHBOUND AND SOUTHBOUND PROFILES DIFFER BETWEEN STA. 875+95.68 AND STA. 901+88.82 AND FROM 921+00.00 TO STA. 924+17.00. SEE THE PLAN AND PROFILE SHEETS FOR DETAILS.

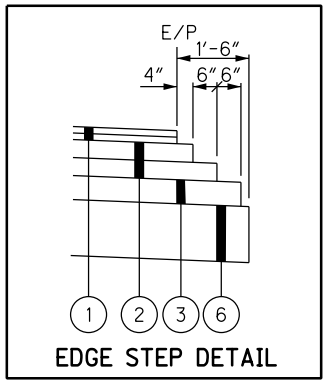
§ - STA. 918+00 TO STA. 921+00 - OIL PIPELINE AREA
DO NOT VIBRATORY ROLL OR LIME STABILIZE IN THIS AREA
REPLACE THE LIME STABILIZATION WITH:
 (16) ITEM 204 - GRANULAR MATERIAL TYPE C (12" THICKNESS)
 (17) ITEM 204 - GEOTEXTILE FABRIC



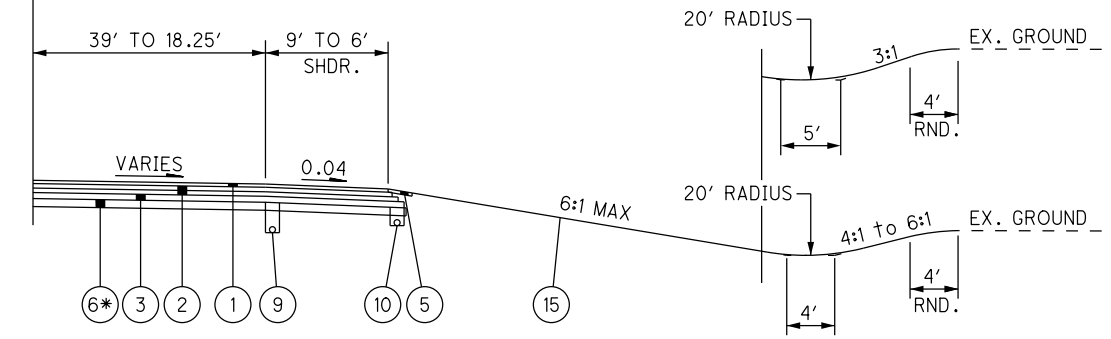
NORMAL SECTION
STA. 908+93.97 TO STA. 924+17.00 = 1523.03 FT



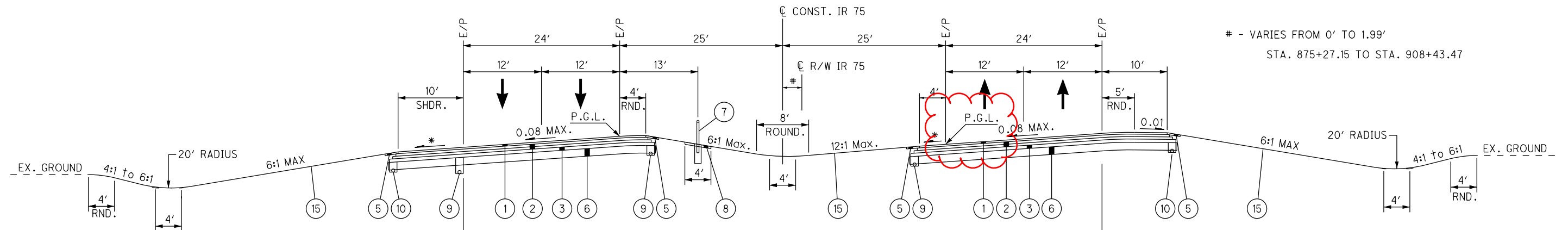
DECELERATION LANE SECTION
STA. 916+04.02 TO STA. 924+15.00 = 810.98 FT



EDGE STEP DETAIL



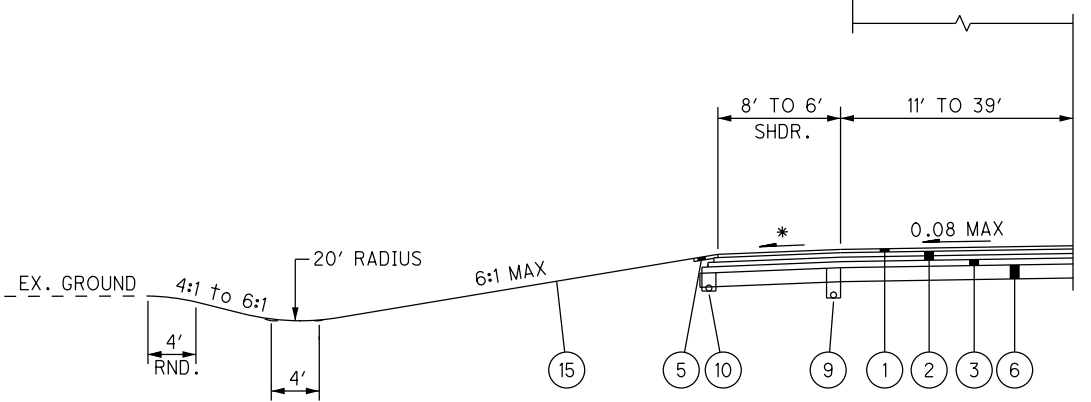
ACCELERATION LANE SECTION
STA. 915+85.17 TO STA. 924+17.00 = 831.83 FT



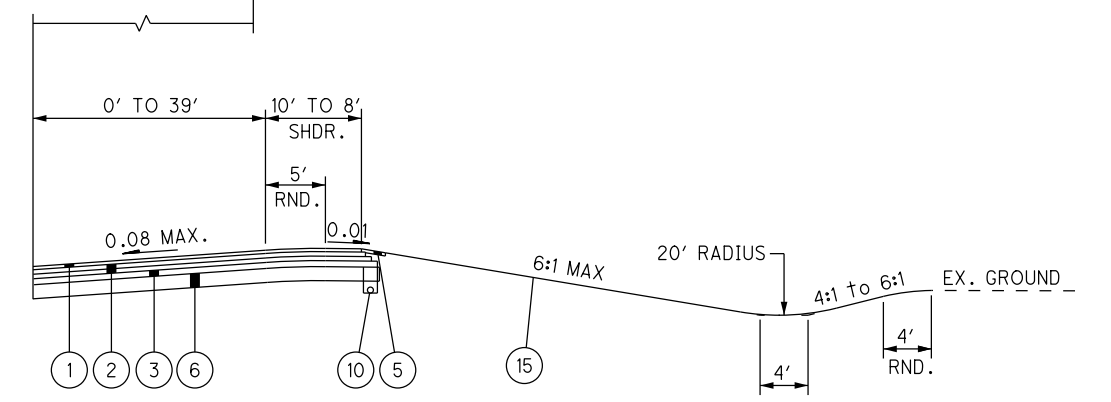
SUPERELEVATED SECTION
STA. 874+76.65 TO STA. 908+41.09 = 3364.44 FT
STA. 908+43.47 TO STA. 908+93.97 = 50.50 FT
Station Equation = Sta. 908+41.09 @ CONST. IR 75 BK=
Sta. 908+43.47 @ CONST. & R/W IR 75 AH

- VARIES FROM 0' TO 1.99'
STA. 875+27.15 TO STA. 908+43.47

* 0.04 OR SUPERELEVATION,
WHICHEVER IS GREATER



ACCELERATION LANE SECTION
STA. 874+76.65 TO STA. 892+70.60 = 1793.95 FT



DECELERATION LANE SECTION
STA. 889+00.00 TO STA. 897+77.10 = 877.10 FT

FOR PROPOSED LEGEND, SEE SHEET 7.

TYPICAL SECTIONS

ALL-75-15.80

I:\Project\data\94214\Design\Roadway\Sheets\94214_GY003.dgn Sheet 26-NOV-2019 6:36AM mmueller

I:\Project\04\Design\Roadway\Sheets\94214_GG002.dgn Sheet 11/5/2019 10:03:33 AM tbolemba

SHEET NUM.							PART.					ITEM	ITEM EXT	GRAND TOTAL	UNIT	DESCRIPTION	SEE SHEET NO.
9	60	62	63A	143	150	163	01/SAF/PV	02/IMS/PV	03/IMS/PV	04/BRO/BR	05/SAE/OT						
DRAINAGE																	
	13.1											602	20000	13.1	CY	CONCRETE MASONRY	
		17,169										605	1100	17,169	FT	6" SHALLOW PIPE UNDERDRAINS	
		17,626										605	14000	17,626	FT	6" BASE PIPE UNDERDRAINS	
300		251										605	13300	551	FT	6" UNCLASSIFIED PIPE UNDERDRAINS	
50		1,596										611	00510	1,646	FT	6" CONDUIT, TYPE F FOR UNDERDRAIN OUTLETS	
	112	30										611	01500	142	FT	6" CONDUIT, TYPE F	
50												611	02600	50	FT	8" CONDUIT, TYPE F	
	20											611	03700	20	FT	10" CONDUIT, TYPE F	
50												611	05200	50	FT	12" CONDUIT, TYPE F	
	401											611	05900	401	FT	15" CONDUIT, TYPE B	
	733											611	06100	733	FT	15" CONDUIT, TYPE C	
	272											611	07400	272	FT	18" CONDUIT, TYPE B	
	291											611	10400	291	FT	24" CONDUIT, TYPE B	
	686											611	10600	686	FT	24" CONDUIT, TYPE C	
	172											611	13400	172	FT	30" CONDUIT, TYPE B	
	798											611	13600	798	FT	30" CONDUIT, TYPE C	
	117											611	16600	117	FT	36" CONDUIT, TYPE C	
	71											611	19400	71	FT	42" CONDUIT, TYPE B	
	162											611	19600	162	FT	42" CONDUIT, TYPE C	
	916											611	21100	916	FT	48" CONDUIT, TYPE C	
				360								611	94800	360	FT	8' X 4' CONDUIT, TYPE A, 706.05	
	15											611	98410	15	EACH	CATCH BASIN, NO. 8	
	7											611	98434	7	EACH	CATCH BASIN, NO. 8A	
	3											611	99574	3	EACH	MANHOLE, NO. 3	
	1											611	99574	1	EACH	MANHOLE, NO. 3, 60" I.D.	
	1											611	99574	1	EACH	MANHOLE, NO. 3, 72" I.D.	
	3											611	99574	3	EACH	MANHOLE, NO. 3, 84" I.D.	
2	2	12										611	99710	16	EACH	PRECAST REINFORCED CONCRETE OUTLET	
PAVEMENT																	
350					101							253	02000	350	CY	PAVEMENT REPAIR	
												253	02001	101	CY	PAVEMENT REPAIR, AS PER PLAN	150
												253	90000	150	CY	PAVEMENT REPAIR, MISC.: SHOULDER REPAIR FOR MOT	10
		297,587										254	01000	297,587	SY	PAVEMENT PLANING, ASPHALT CONCRETE, 1-1/2" DEPTH	
				1,486								255	10161	1,486	SY	FULL DEPTH PAVEMENT REMOVAL AND RIGID REPLACEMENT, CLASS QC MS, AS PER PLAN	150
				6,388								255	20000	6,388	FT	FULL DEPTH PAVEMENT SAWING	
		15,056					1,905	13,059	92			301	46000	15,056	CY	ASPHALT CONCRETE BASE, PG64-22	
		10,387					1,327	8,998	62			304	20000	10,387	CY	AGGREGATE BASE	
		35,088					1,228	8,469	25,391			407	20000	35,088	GAL	NON-TRACKING TACK COAT	
		11,514					451	3,005	8,058			442	00100	11,514	CY	ANTI-SEGREGATION EQUIPMENT	
		14,868					306	2,120	12,442			442	10300	14,868	CY	ASPHALT CONCRETE SURFACE COURSE, 12.5 MM, TYPE A (447)	
		2,848					357	2,473	18			442	20200	2,848	CY	ASPHALT CONCRETE INTERMEDIATE COURSE, 19 MM, TYPE A (448)	
		3,198					84	457	2,657			617	10100	3,198	CY	COMPACTED AGGREGATE	
		26.95					0.44	2.93	23.58			618	40600	26.95	MILE	RUMBLE STRIPS, SHOULDER (ASPHALT CONCRETE)	
LIGHTING																	
						30						625	00480	30	EACH	CONNECTION, UNFUSED PERMANENT	
						4						625	15100	4	EACH	LIGHT TOWER FOUNDATION, 36" X 20' DEEP	
						1,710						625	23200	1,710	FT	NO. 4 AWG 2400 VOLT DISTRIBUTION CABLE	
						8,667						625	24320	8,667	FT	1-1/2" DUCT CABLE WITH THREE NO. 4 AWG 2400 VOLT CABLES	
						500						625	25908	500	FT	CONDUIT, JACKED OR DRILLED, 725.0523"	
						48						625	26263	48	EACH	LUMINAIRE, HIGH MAST, SOLID STATE (LED), AS PER PLAN	163
						8,467						625	29002	8,467	FT	TRENCH, 24" DEEP	
						10						625	30706	10	EACH	PULL BOX, 725.08, 24"	
						4						625	32000	4	EACH	GROUND ROD	
						4						625	35020	4	EACH	RE-ERECT EXISTING LIGHT TOWER	

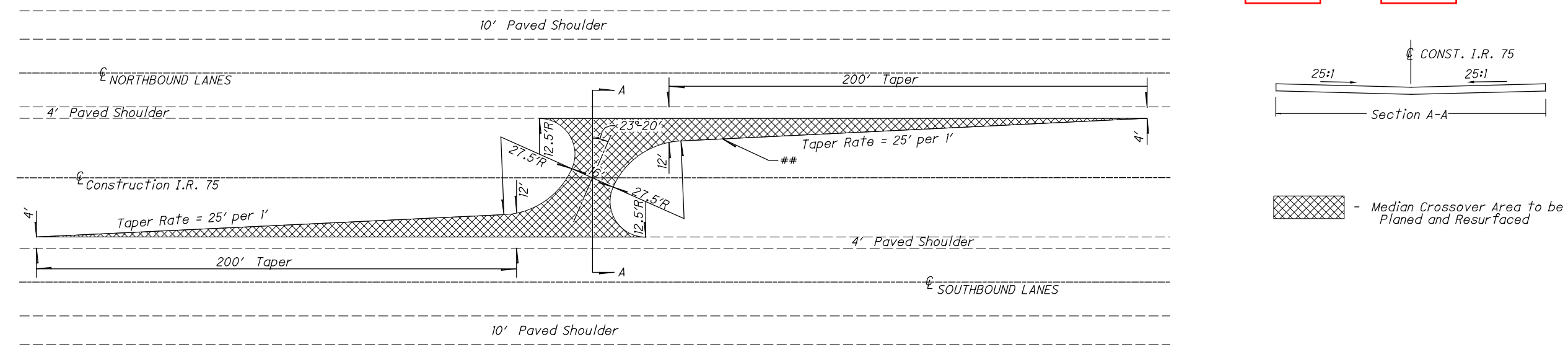
GENERAL SUMMARY

ALL - 75 - 15.80

55
188

I:\Project\data\94214\Design\Roadway\Sheets\94214_GS007.dgn Sheet 11/5/2019 10:33:34 AM tbolemba

STATION RANGE			SIDE	DISTANCE (D) FT	AVERAGE WIDTH (W) FT	SURFACE AREA (A) A=DxW/9 SY	CADD GENERATED AREA SY	202	204	204	204	204	204	206	206	206	254	301	304	407	442	442	442	617	618	
								PAVEMENT REMOVED SY	SUBGRADE COMPACTION SY	GRANULAR MATERIAL, TYPE C (12" DEPTH) CY	GEOTEXTILE FABRIC SY	GEOGRID SY	PROOF ROLLING HOUR	LIME STABILIZED SUBGRADE, 14 INCHES DEEP SY	LIME TON	CURING COAT SY	PAVEMENT PLANING, ASPHALT CONCRETE 1 1/2" DEPTH SY	ASPHALT CONCRETE BASE, PG64-22 (9"DEPTH) CY	AGGREGATE BASE (6" DEPTH) CY	NON-TRACKING TACK COAT GAL	ANTI-SEGREGATION EQUIPMENT CY	ASPHALT CONCRETE SURFACE COURSE, 12.5 MM, TYPE A (447) CY	ASPHALT CONCRETE INTERMEDIATE COURSE, 19 MM, TYPE A (448) CY	COMPACTED AGGREGATE CY	RUMBLE STRIPS, SHOULDER (ASPHALT CONCRETE) MILE	
03/IMS/PV																										
SLM 15.800	TO	SLM 16.547	NB	3944.16	38.00	16653.12											16653.12			1415.52	438.24	693.88		158.25	1.49	
869+27.00		874+76.65	NB	549.65	38.00	2320.74											2320.74			197.26	61.07	96.70		22.05	0.21	
SLM 17.586		SLM 22.630	NB	26632.32	38.00	112447.57											112447.57			9558.04	2959.15	4685.32		1068.58	10.09	
SLM 15.800	TO	SLM 16.547	SB	3944.16	38.00	16653.12											16653.12			1415.52	438.24	693.88		158.25	1.49	
869+27.00		874+76.65	SB	549.65	28.00	1710.02											1710.02			145.35	61.07	71.25		22.05	0.21	
SLM 17.586		SLM 22.630	SB	26632.32	38.00	112447.57											112447.57			9558.04	2959.15	4685.32		1068.58	10.09	
S.R. 696/LINCOLN HIGHWAY																										
RAMP H		ENTRANCE																								
SLM 17.586		SLM 17.715		682.97	8.63	654.89														55.67	27.29	27.29				
Napoleon Rd																										
E		Exit					7000.00										7000.00			595.00	201.88	291.67		39.51		
F		Entrance					6625.00										6625.00			563.13	217.08	276.04		29.63		
Bentley Rd.																										
A		Entrance					6025.00										6025.00			512.13	226.25	251.04		16.67		
B		Exit					4400.00										4400.00			374.00	136.08	183.33		25.93		
C		Entrance					4100.00										4100.00			348.50	123.21	170.83		20.00		
D		Exit					6280.00										6280.00			533.80	209.38	261.67		27.16		
MEDIAN CROSSOVERS																										
		871+38.00					295.00										295.00			25.08		12.29				
		951+36.00					335.00										335.00			28.48		13.96				
		0+21.43					295.00										295.00			25.08		12.29				
BLUFFTON QUARRY TUNNEL																										
							370.00	370	370	370	370	370	370				92.50	61.67	40.70		15.42	17.99				
03/IMS/PV SUBTOTALS							370	370	370	370	370	370	0	0	0	0	297587	92	62	25391	8058	12442	18	2657	23.58	
02/IMS/PV SUBTOTALS							60049	6971	2889	8667	0	25	45708	1456	48225	0	13059	8998	8469	3005	2120	2473	457	2.93		
01/SAF/PV SUBTOTALS							6416	2864	955	2864	0	4	5176	156	5176	0	1905	1327	1228	451	306	357	84	0.44		
TOTALS CARRIED TO GENERAL SUMMARY							66835	10205	4214	11901	370	29	50884	1612	53401	297587	15056	10387	35088	11514	14868	2848	3198	26.95		

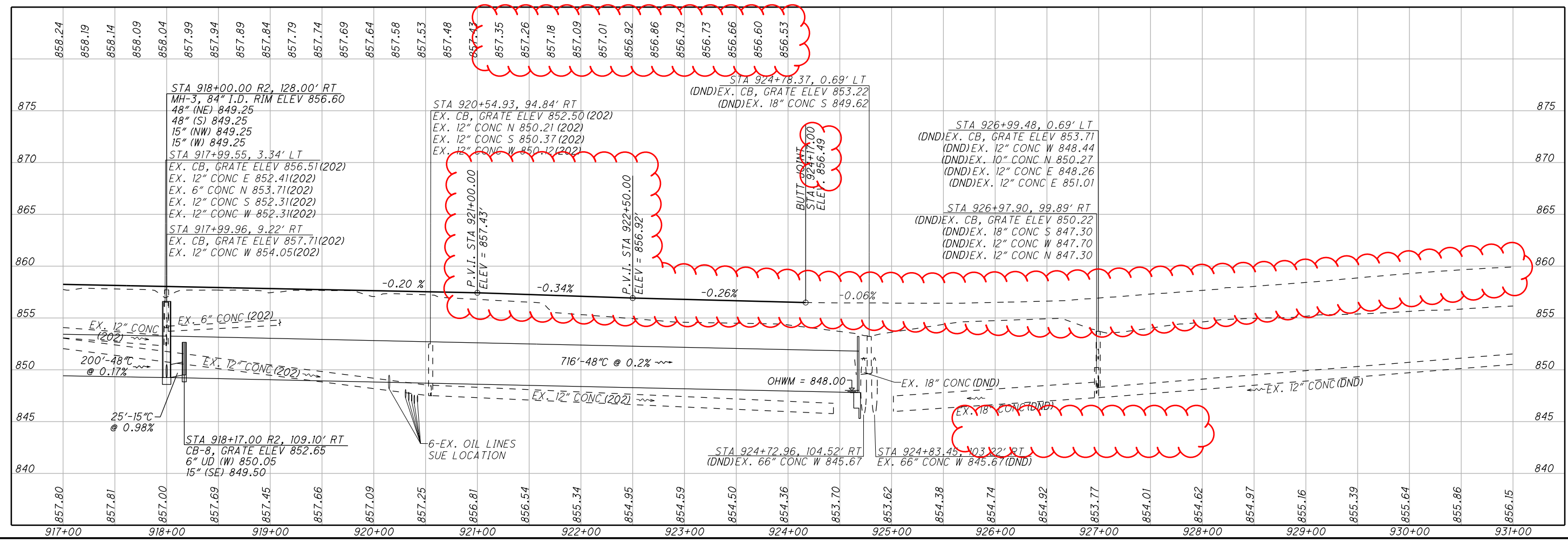
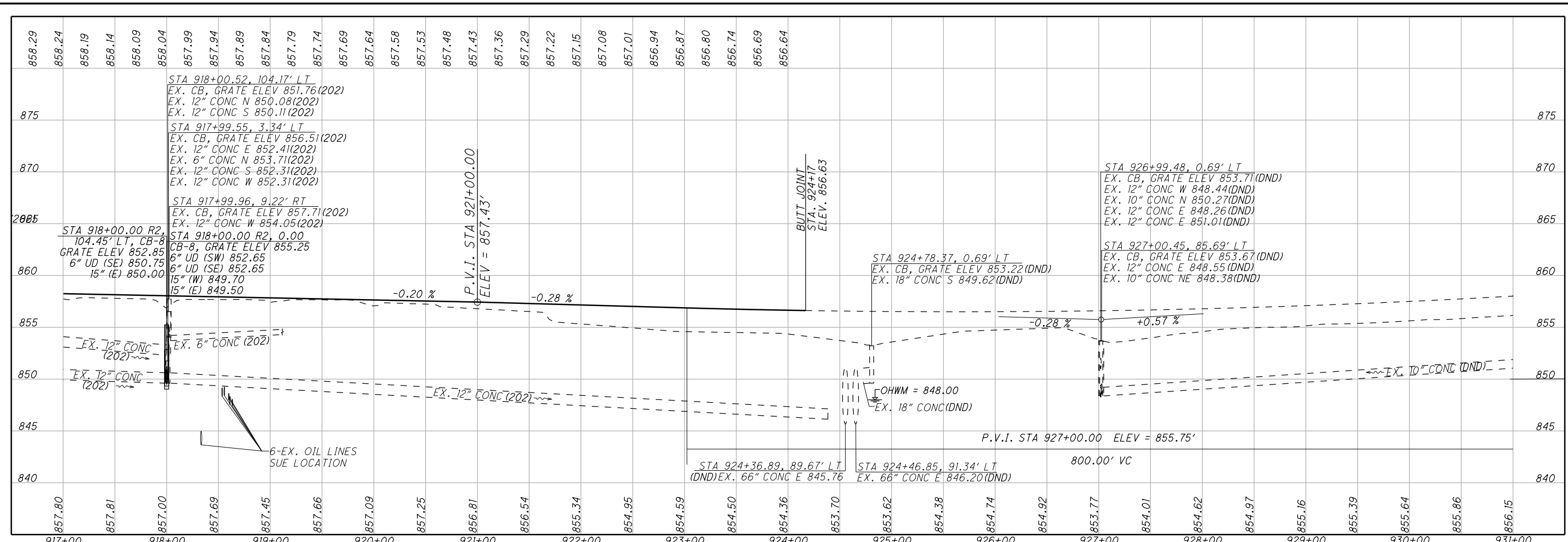


MEDIAN CROSSOVERS FOR ASPHALT SURFACE COURSE
 STA 871+38.00
 STA 951+36.00
 S.L.M. 0+21.43

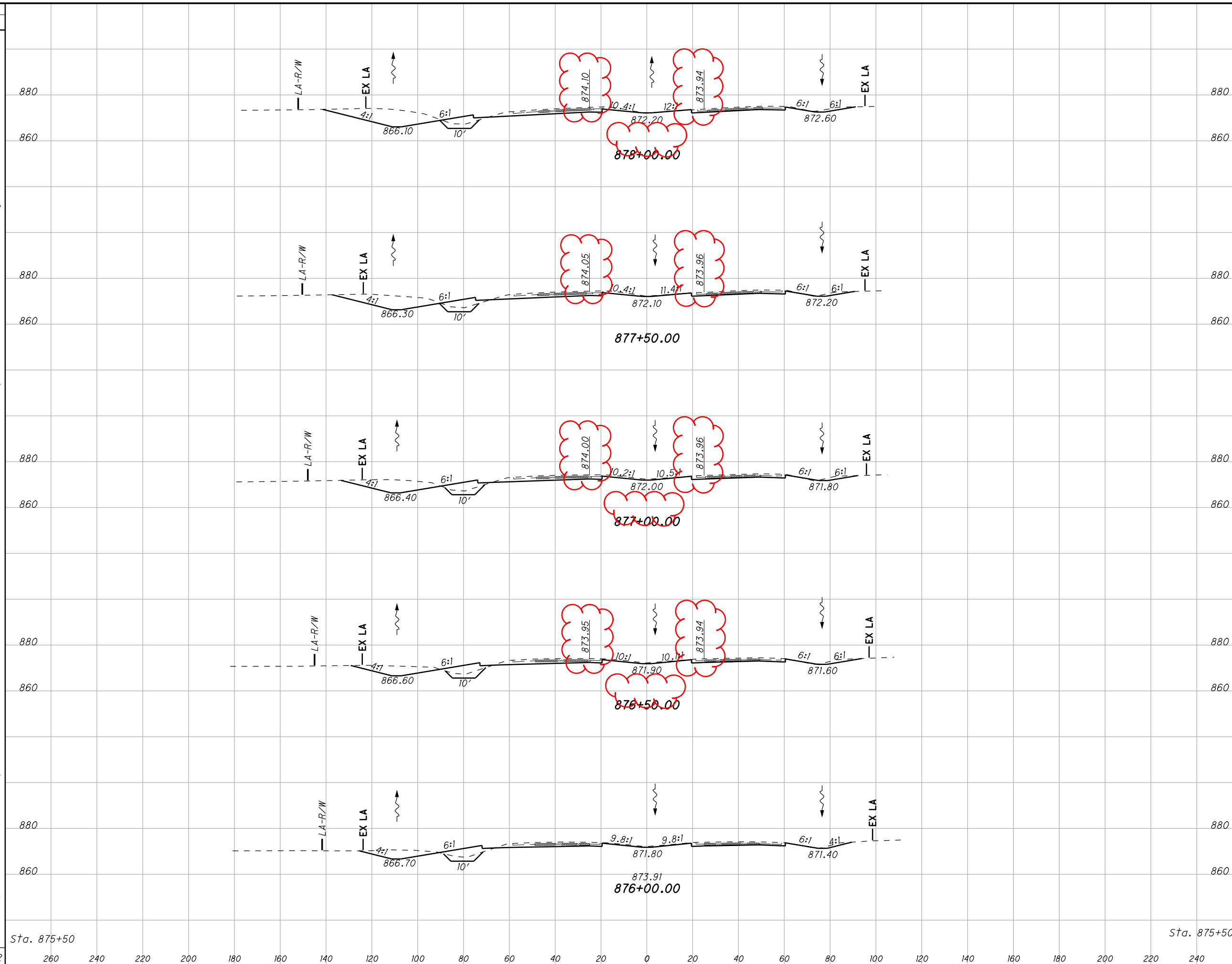
PROFILE SHEET

ALL-75-15.80

I:\Project\data\94214\Design\Roadway\Sheets\94214.GP009.dgn Sheet 26-NOV-2019 6:59AM mmueller



SEEDING
END SO.
WIDTH YDS.
152
842
151
836
150
831
149
828
149
825
148
Sta. 875+50
4162
260
240
220
200
180
160
140
120
100
80
60
40
20
0
20
40
60
80
100
120
140
160
180
200
220
240



END AREA	VOLUME	CALCULATED	
		CUT	FILL
355	74	608	143
302	80	535	152
276	84	466	159
227	88	387	165
191	90	336	169
172	92	2332	788

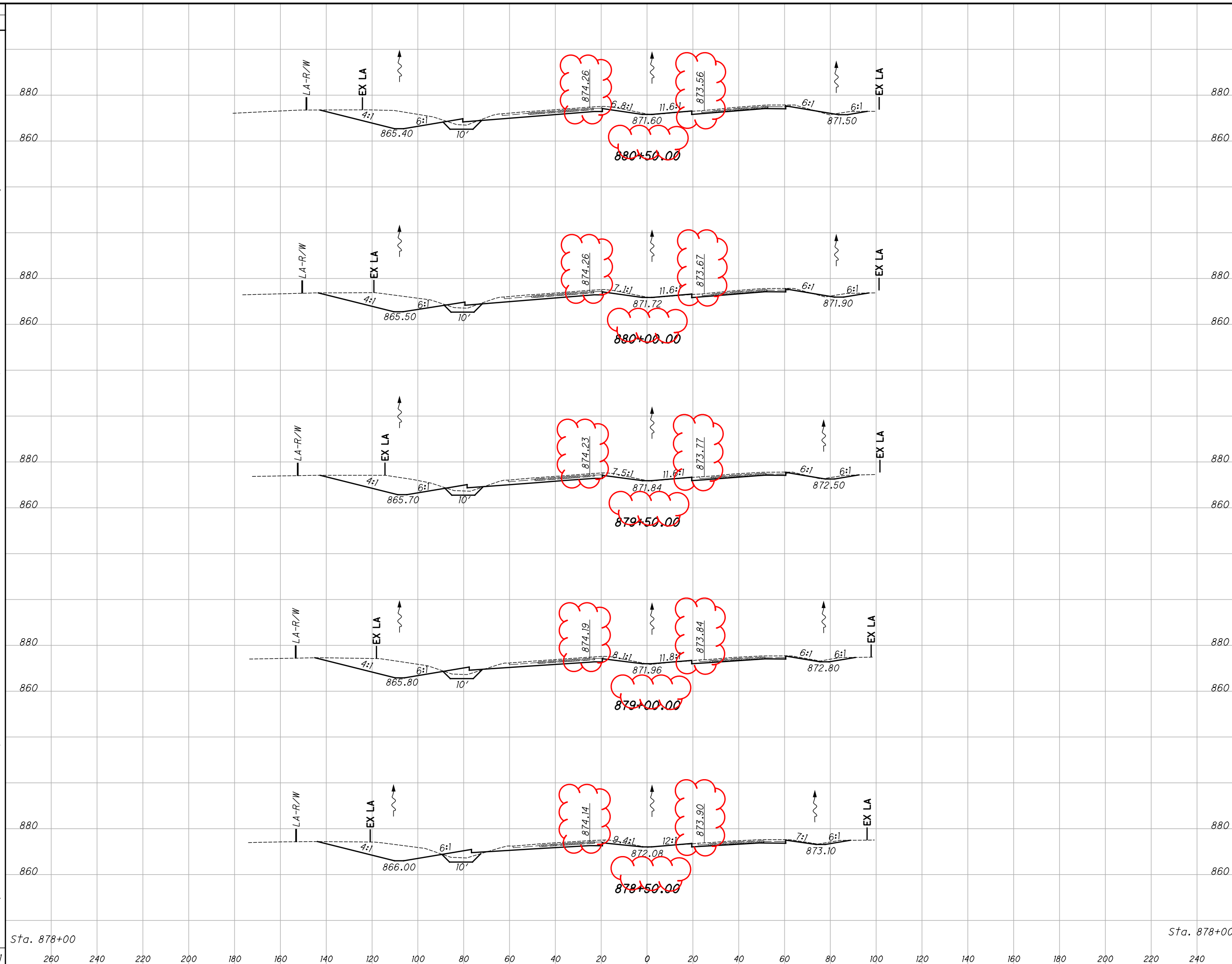
ALL -75-15.80

78
188

I-75 MAINLINE CROSS SECTIONS
FROM STA. 876+00.00 TO STA. 878+00.00

I:\Project\data\94214\Design\Roadway\Sheets\94214_XS00_Mainline.dgn Sheet 25-NOV-2019 2:51PM mmueller

SEEDING
 END SO.
 WIDTH YDS.
 4261
 260
 240
 220
 200
 180
 160
 140
 120
 100
 80
 60
 40
 20
 0
 20
 40
 60
 80
 100
 120
 140
 160
 180
 200
 220
 240
 Sta. 878+00
 152
 153
 154
 156
 158
 153
 150



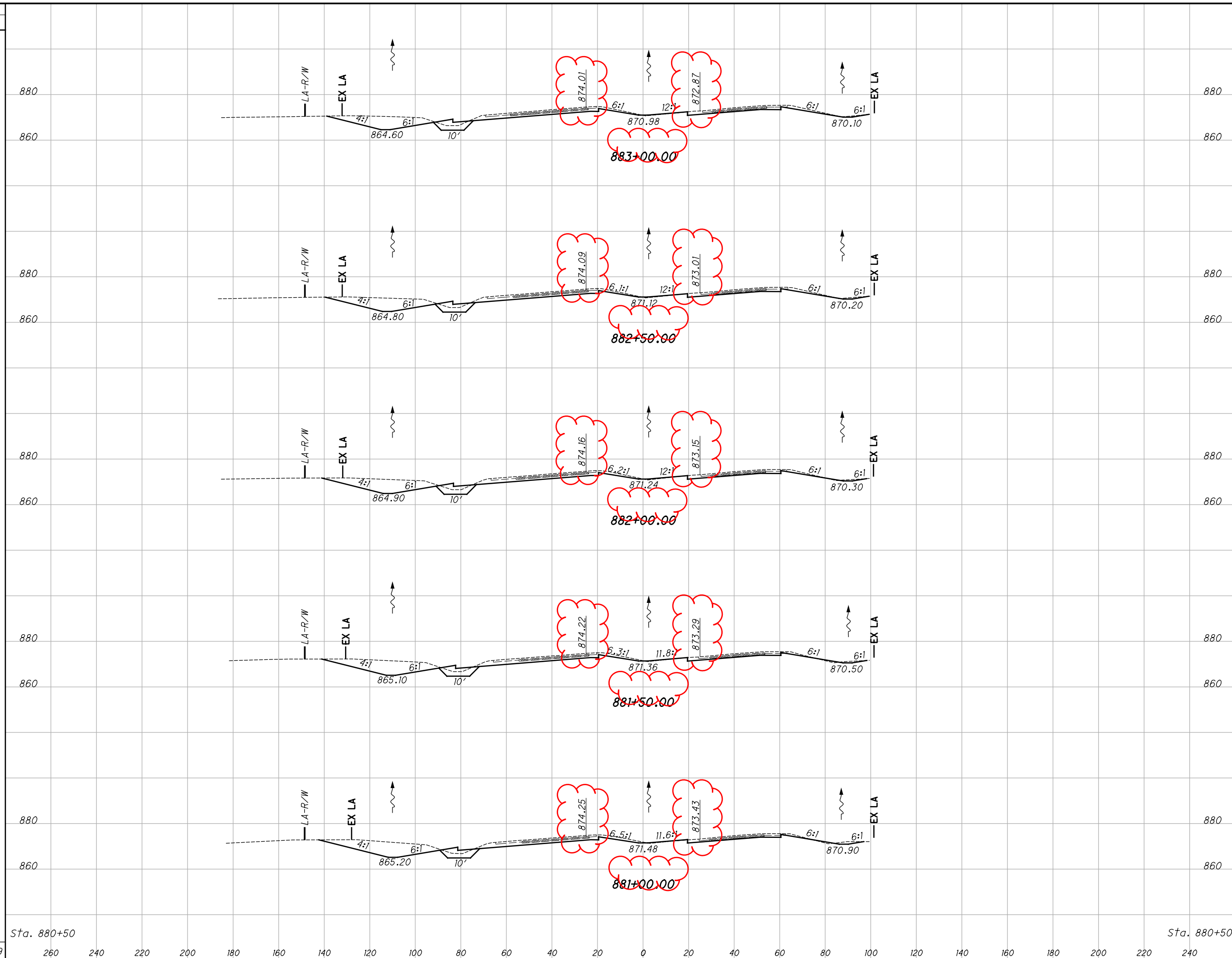
END AREA	VOLUME	CALCULATED	
		CUT	FILL
385	58		
382	56		
369	56		
375	62		
352	67		
355	74		
3422	569	710	106
		695	104
		689	109
		673	119
		655	131
		79	188

**I-75 MAINLINE CROSS SECTIONS
 FROM STA. 878+50.00 TO STA. 880+50.00**

ALL -75-15.80

I:\Project\4261\Design\Roadway\Sheets\94214_XS00_Mainline.dgn Sheet II/25/2019 2:43:30 PM mmueller

SEEDING
END SO.
WIDTH YDS.
147
817
147
817
147
819
148
825
149
831
150



END AREA		VOLUME		CALCULATED TAB	CHECKED JLG
CUT	FILL	CUT	FILL		
318	60				
		596	111		
326	60				
		617	113		
340	62				
		633	117		
344	64				
		656	118		
364	63				
		694	112		
385	58				
		3196	571		

**I-75 MAINLINE CROSS SECTIONS
FROM STA. 881+00.00 TO STA. 883+00.00**

ALL -75-15.80

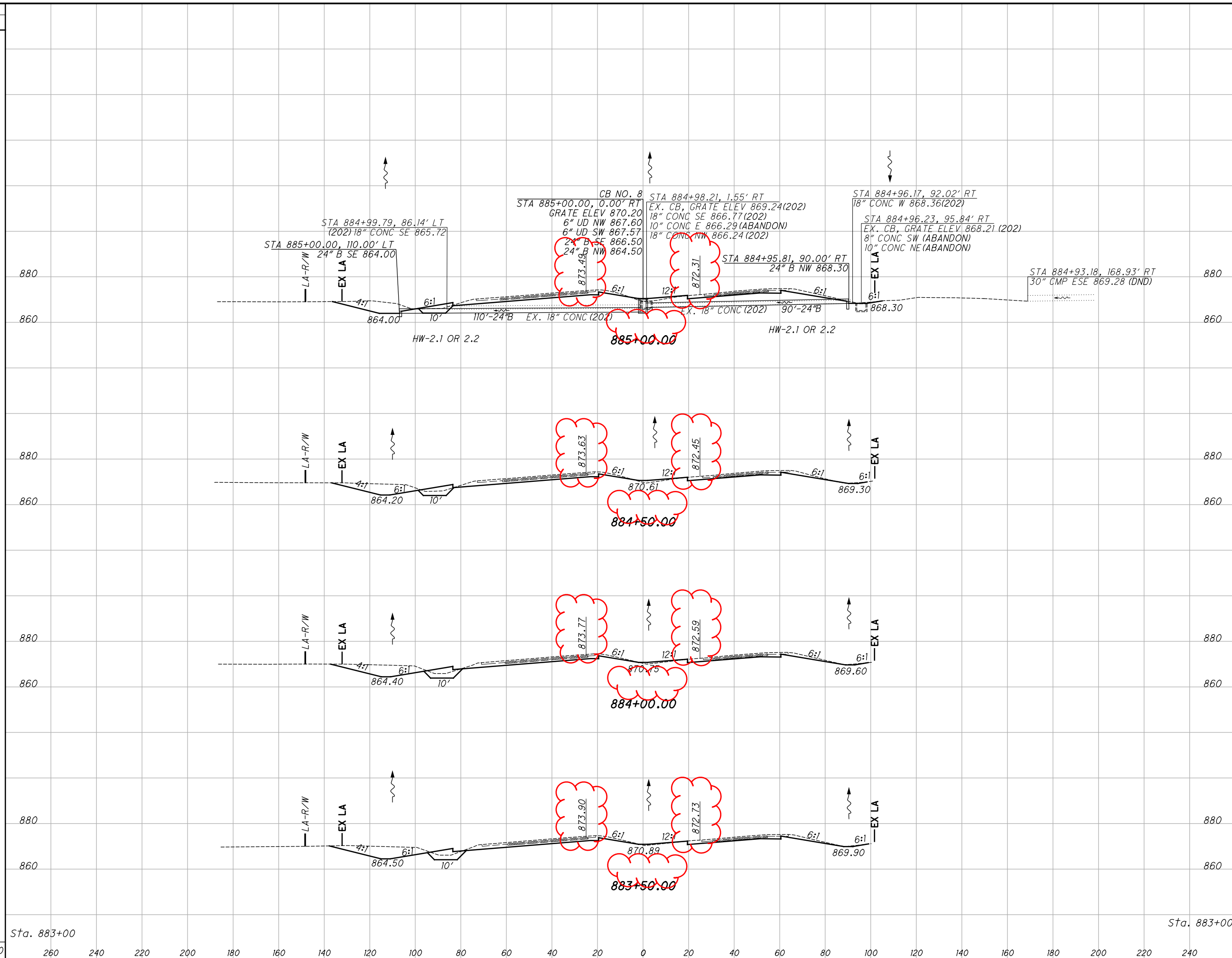
80
188

I:\Project\94214\Design\Roadway\Sheets\94214_XS00_Mainline.dgn Sheet 11/25/2019 2:43:32 PM mmueller

Sta. 880+50

Sta. 880+50

SEEDING
 END SO.
 WIDTH YDS.
 166
 147
 147
 147
 3320



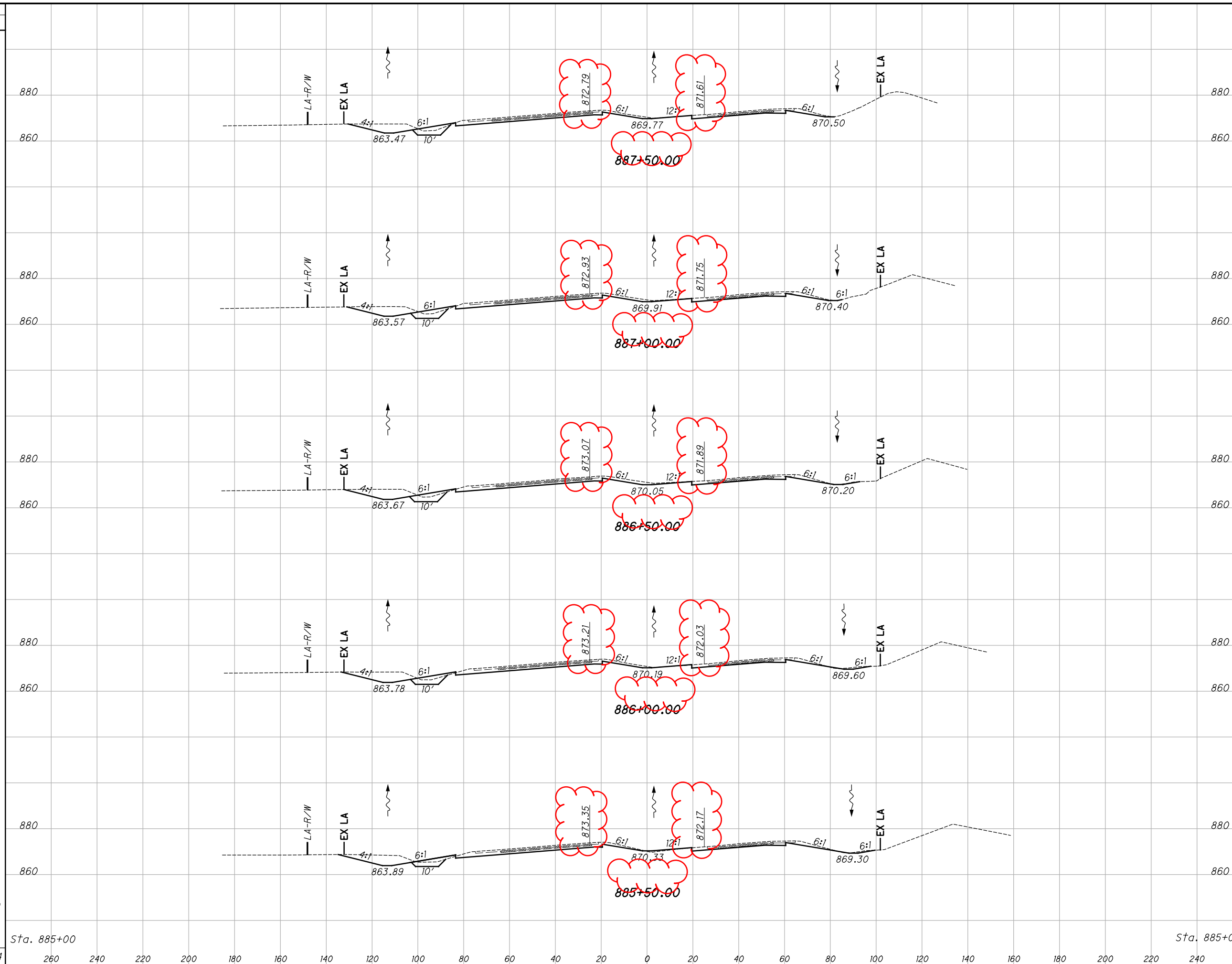
END AREA	VOLUME		CALCULATED TAB	CHECKED JLG
	CUT	FILL		
268	63			
264	62	493	116	
287	66	510	119	
299	63	543	119	
318	60	571	114	
		2117	468	

**I-75 MAINLINE CROSS SECTIONS
 FROM STA. 883+50.00 TO STA. 885+00.00**

ALL -75-15.80

I:\Project\4214\Design\Roadway\Sheets\94214_XS00_Mainline.dgn Sheet 11/25/2019 2:43:33 PM mmueller

SEEDING
 END SO.
 WIDTH YDS.
 148
 822
 148
 819
 147
 817
 147
 817
 147
 869
 166
 Sta. 885+00
 4144
 260 240 220 200 180 160 140 120 100 80 60 40 20 0 20 40 60 80 100 120 140 160 180 200 220 240



END AREA	VOLUME	CALCULATED	CHECKED	JLG
228	52			
244	52			
259	52			
255	53			
247	53			
268	63			
437	96			
466	96			
476	97			
465	98			
477	107			
2321	494			

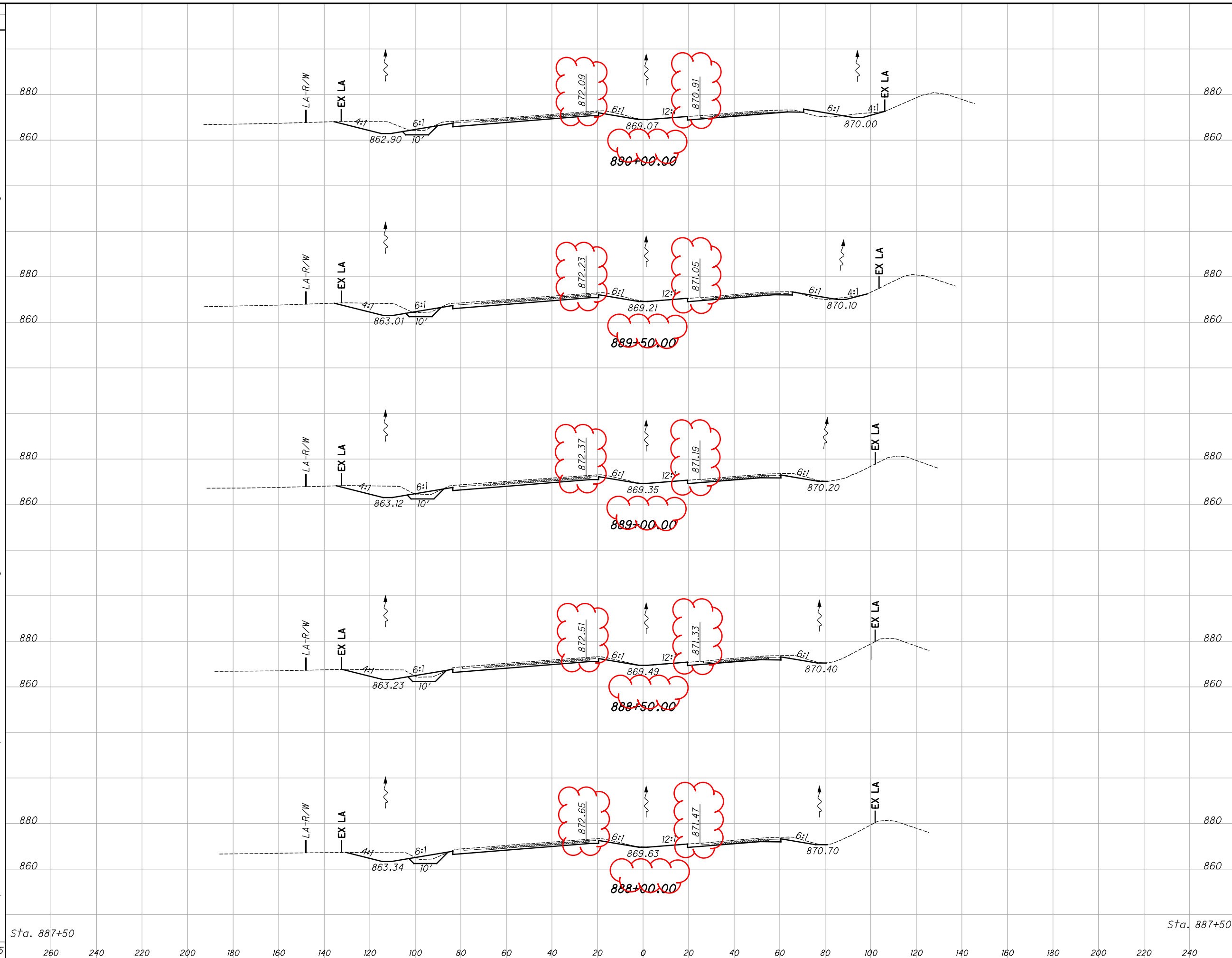
I-75 MAINLINE CROSS SECTIONS
 FROM STA. 885+50.00 TO STA. 887+50.00

ALL -75-15.80

82
 188

I:\Project\data\Design\Roadway\Sheets\94214_XS00_Mainline.dgn Sheet 11/25/2019 2:43:35 PM mmueller

SEEDING
END SO.
WIDTH YDS.
141
792
144
811
148
822
148
825
149
825
148
Sta. 887+50
4075
260
240
220
200
180
160
140
120
100
80
60
40
20
0
20
40
60
80
100
120
140
160
180
200
220
240

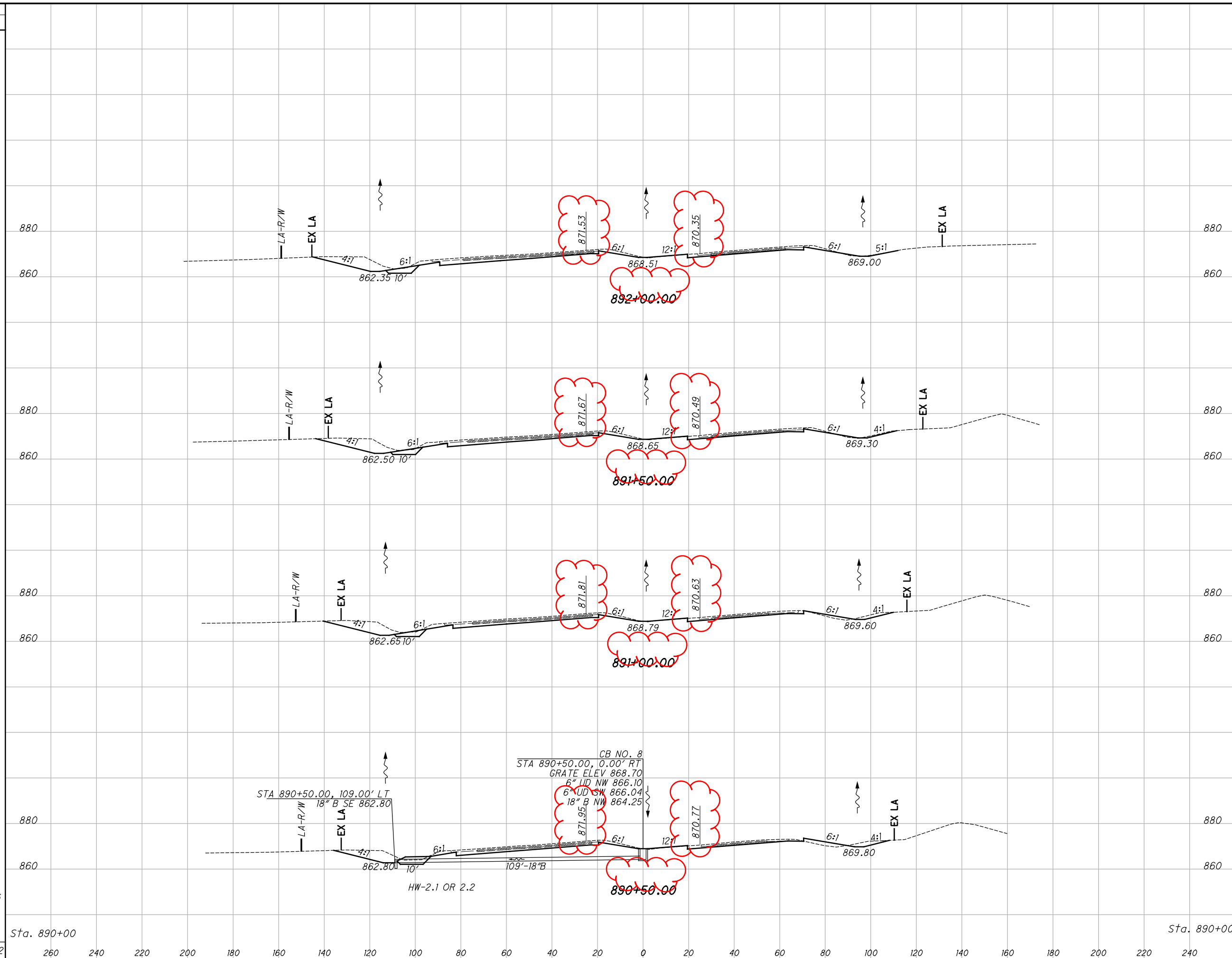


END STA.	END AREA		VOLUME	
	CUT	FILL	CUT	FILL
880	249	62		
860			454	102
880	241	48		
860			451	83
880	246	42		
860			437	85
880	226	50		
860			408	93
880	215	50		
860			410	94
Sta. 887+50	228	52		
			2160	457

CALCULATED
 TAB
 CHECKED
 JLG
I-75 MAINLINE CROSS SECTIONS
FROM STA. 888+00.00 TO STA. 890+00.00
ALL -75-15.80
 83
 188

I:\Project\94214\Design\Roadway\Sheets\94214_XS00_Mainline.dgn Sheet 11/25/2019 2:43:36 PM mmueller

SEEDING
 END SO.
 WIDTH YDS.
 3482
 260 240 220 200 180 160 140 120 100 80 60 40 20 0 20 40 60 80 100 120 140 160 180 200 220 240
 172
 931
 163
 898
 156
 847
 149
 806
 141
 Sta. 890+00



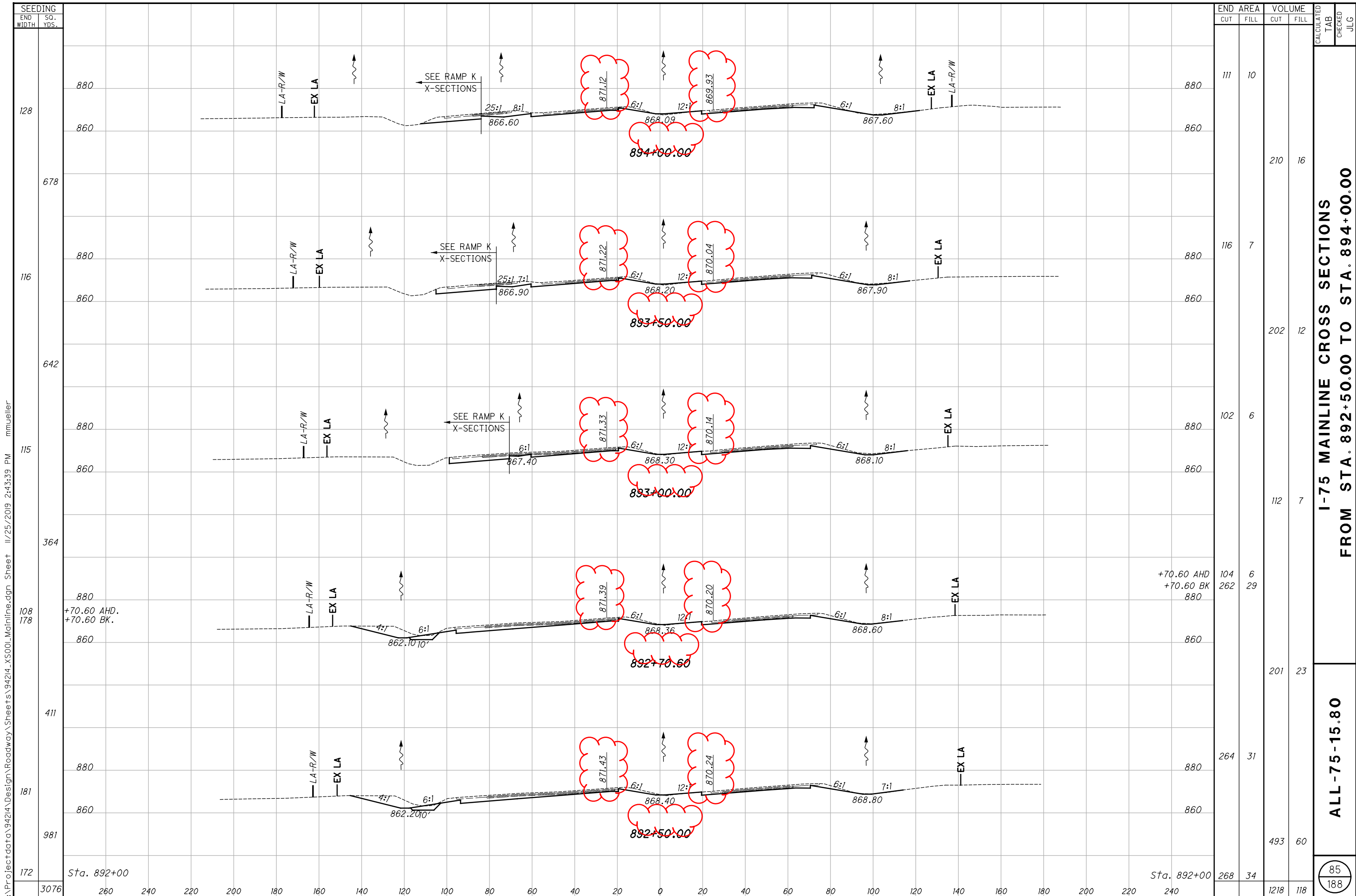
END AREA	VOLUME		CALCULATED TAB	CHECKED JLG
	CUT	FILL		
268	34			
268	32	496	61	
251	43	481	69	
232	71	447	106	
249	62	445	123	
249	62	1869	359	

**I-75 MAINLINE CROSS SECTIONS
 FROM STA. 890+50.00 TO STA. 892+00.00**

ALL -75-15.80

84
 188

I:\Project\4214\Design\Roadway\Sheets\94214_XS00_Mainline.dgn Sheet 11/25/2019 2:43:37 PM mmueller

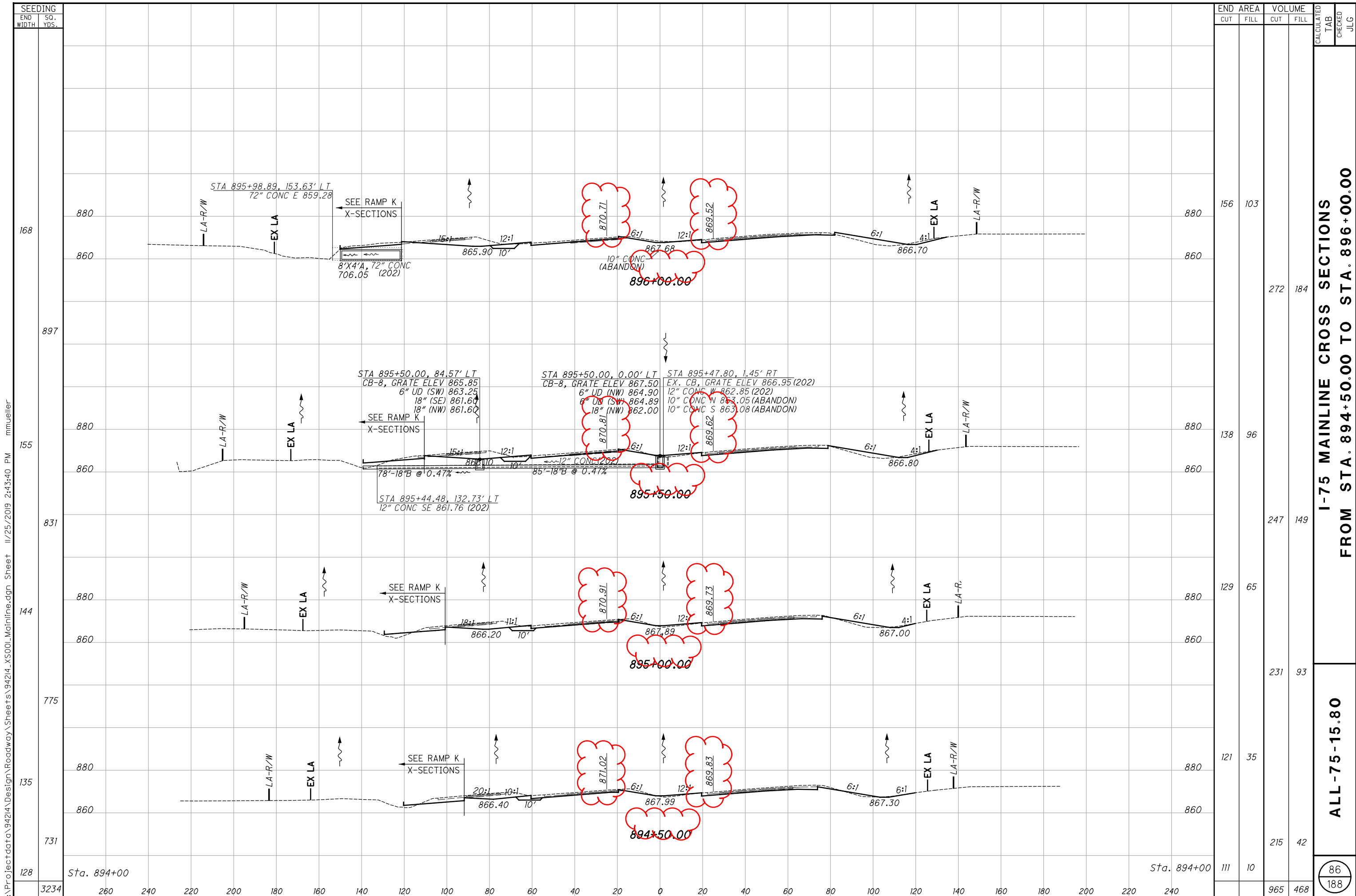


I:\Project\94214\Design\Roadway\Sheets\94214_XS00_Mainline.dgn Sheet 11/25/2019 2:43:39 PM mmueller

END STA.	END AREA		VOLUME		CALCULATED TAB	CHECKED JLG
	CUT	FILL	CUT	FILL		
128	111	10				
678			210	16		
116	116	7				
642			202	12		
115	102	6				
364			112	7		
108	104	6				
178	262	29				
411			201	23		
181	264	31				
981			493	60		
172	268	34				
3076			1218	118		

**I-75 MAINLINE CROSS SECTIONS
FROM STA. 892+50.00 TO STA. 894+00.00**

ALL -75-15.80

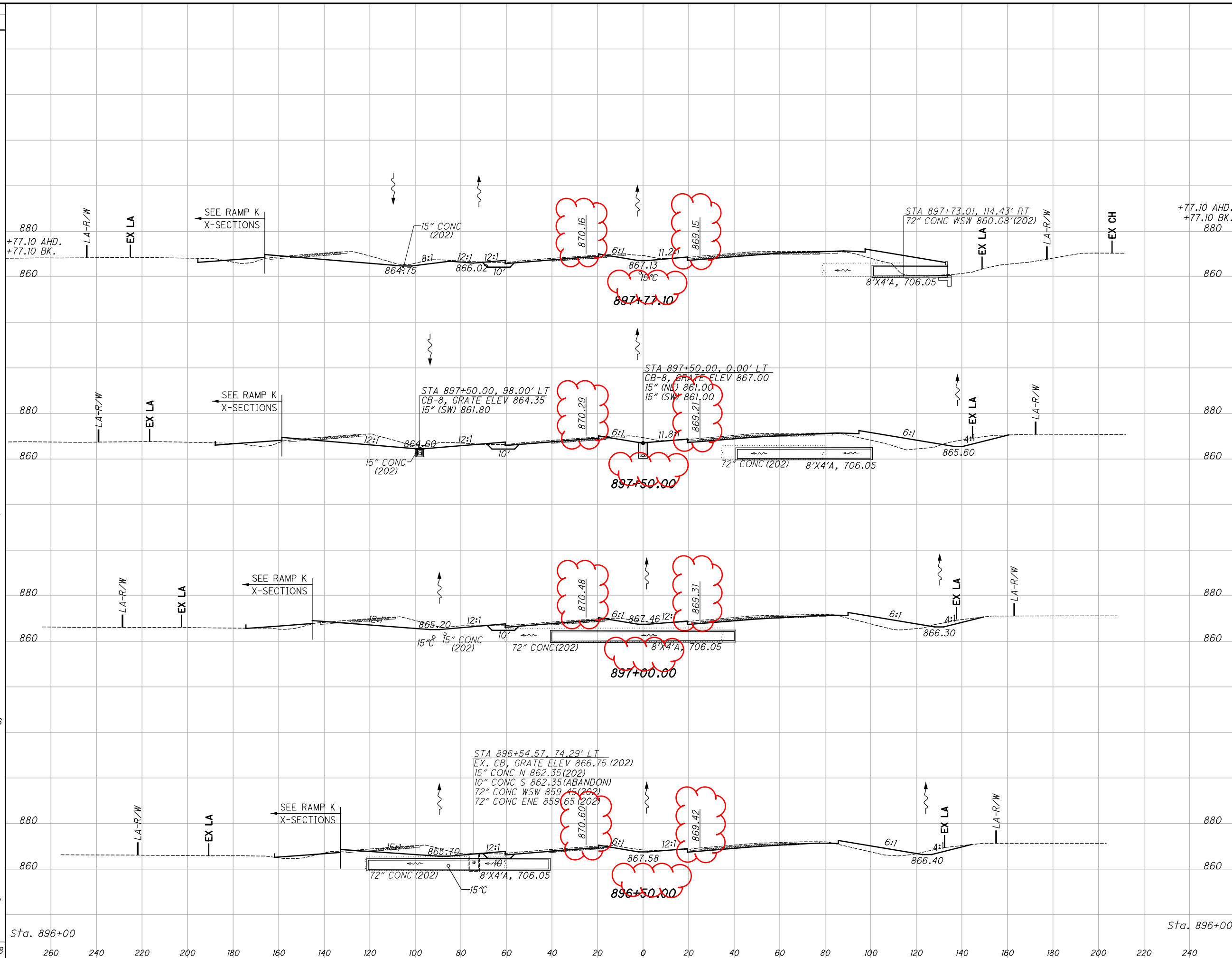


I:\Project\4214\Design\Roadway\Sheets\94214_XS00_Mainline.dgn Sheet II/25/2019 2:43:40 PM mmueller

SEEDING	END AREA		VOLUME	
	CUT	FILL	CUT	FILL
128	111	10	215	42
135	121	35	215	42
144	129	65	231	93
155	138	96	247	149
168	156	103	272	184
TOTAL	525	209	965	468

I-75 MAINLINE CROSS SECTIONS
FROM STA. 894+50.00 TO STA. 896+00.00
 CALCULATED TAB CHECKED JLG
ALL -75-15.80
 86
 188

SEEDING
END WIDTH SO. YDS.
155 253
707
217
1153
198
1056
182
972
168
Sta. 896+00
3888
260 240 220 200 180 160 140 120 100 80 60 40 20 0 20 40 60 80 100 120 140 160 180 200 220 240

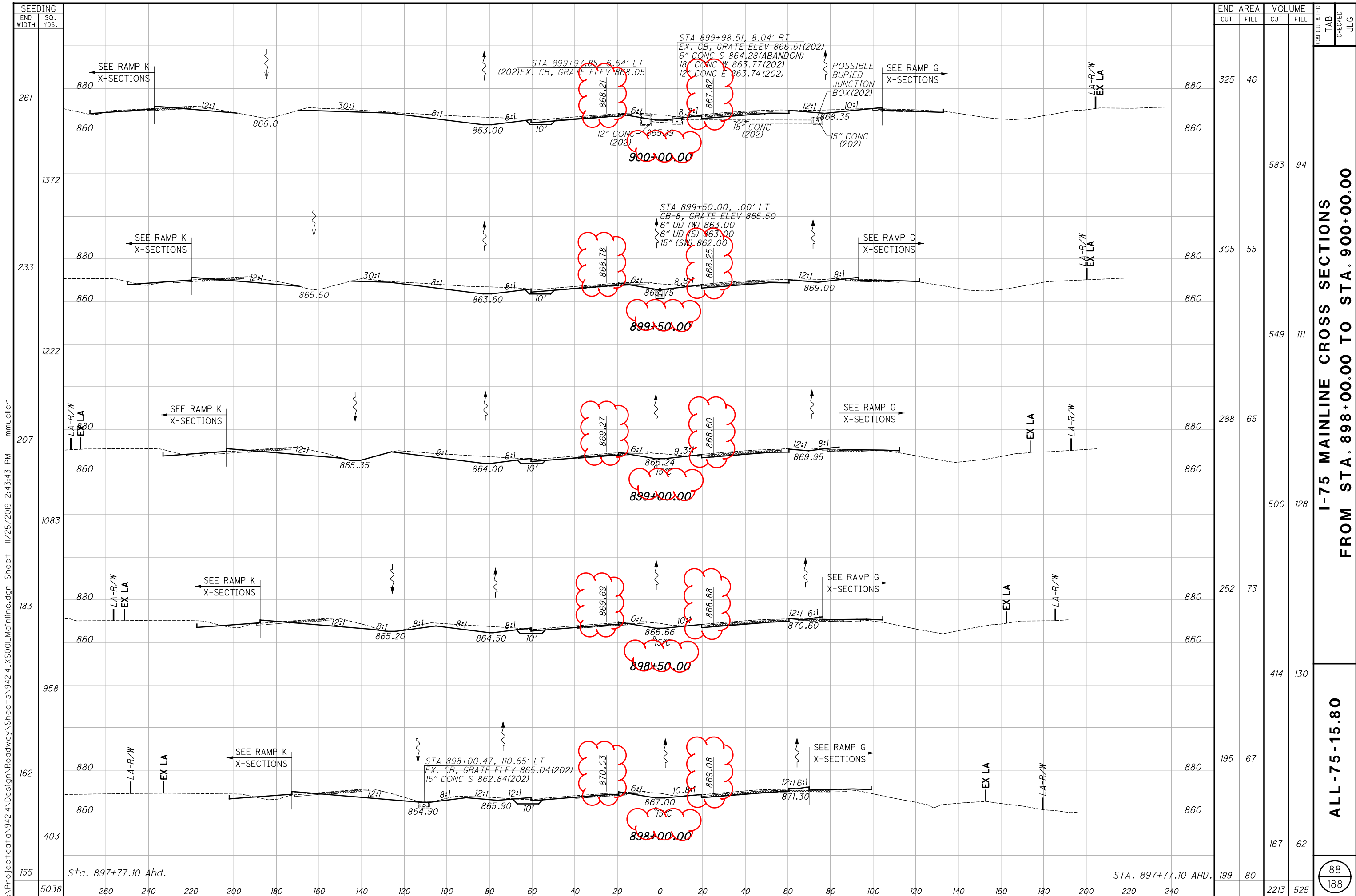


END STA.	AREA		VOLUME		CALCULATED TAB	CHECKED JLG
	CUT	FILL	CUT	FILL		
897+77.10	199	80	275	203		
897+50.00	349	215	502	361		
897+00.00	193	175	338	282		
896+50.00	172	130	304	216		
Sta. 896+00	156	103	1419	1062		

**I-75 MAINLINE CROSS SECTIONS
FROM STA. 896+50.00 TO STA. 897+77.10**

ALL -75-15.80

I:\Project\data\94214\Design\Roadway\Sheets\94214_XS00_Mainline.dgn Sheet 11/25/2019 2:43:42 PM mmueller



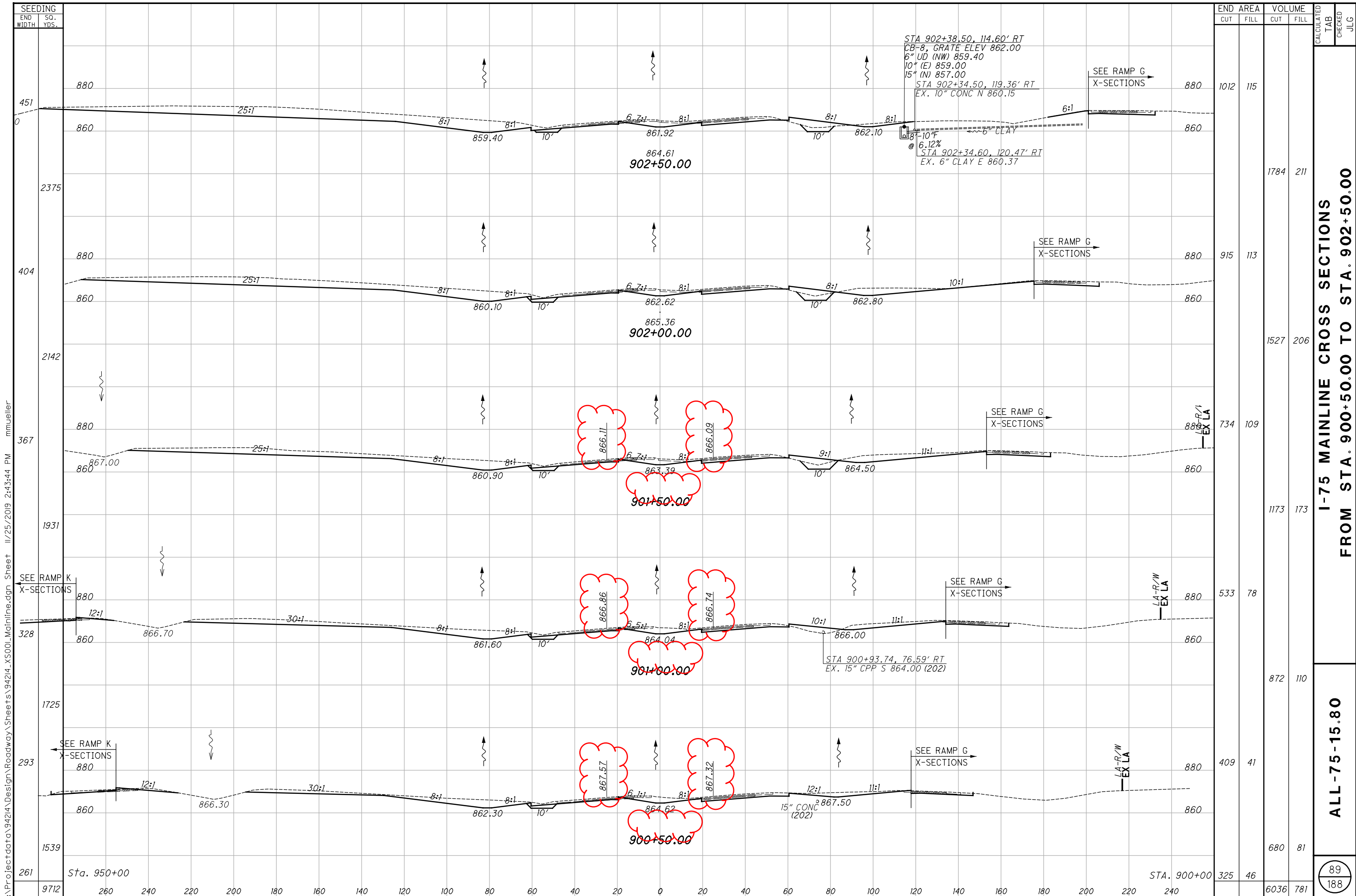
END AREA	VOLUME	CALCULATED	CHECKED	JLG
325	46			
305	55			
288	65			
252	73			
195	67			
167	62			
199	80			
2213	525			

I-75 MAINLINE CROSS SECTIONS
FROM STA. 898+00.00 TO STA. 900+00.00

ALL-75-15.80

88
188

I:\Project\data\Design\Roadway\Sheets\94214_XS00_Mainline.dgn Sheet 11/25/2019 2:43:43 PM mmueller



I:\Project\data\94214\Design\Roadway\Sheets\94214_XS00_Mainline.dgn Sheet 11/25/2019 2:43:44 PM mmueller

STA 902+38.50, 114.60' RT
 CB-8, GRATE ELEV 862.00
 6" UD (NW) 859.40
 10" (E) 859.00
 15" (N) 857.00
 STA 902+34.50, 119.36' RT
 EX. 10" CONC N 860.15
 STA 902+34.60, 120.47' RT
 EX. 6" CLAY E 860.37

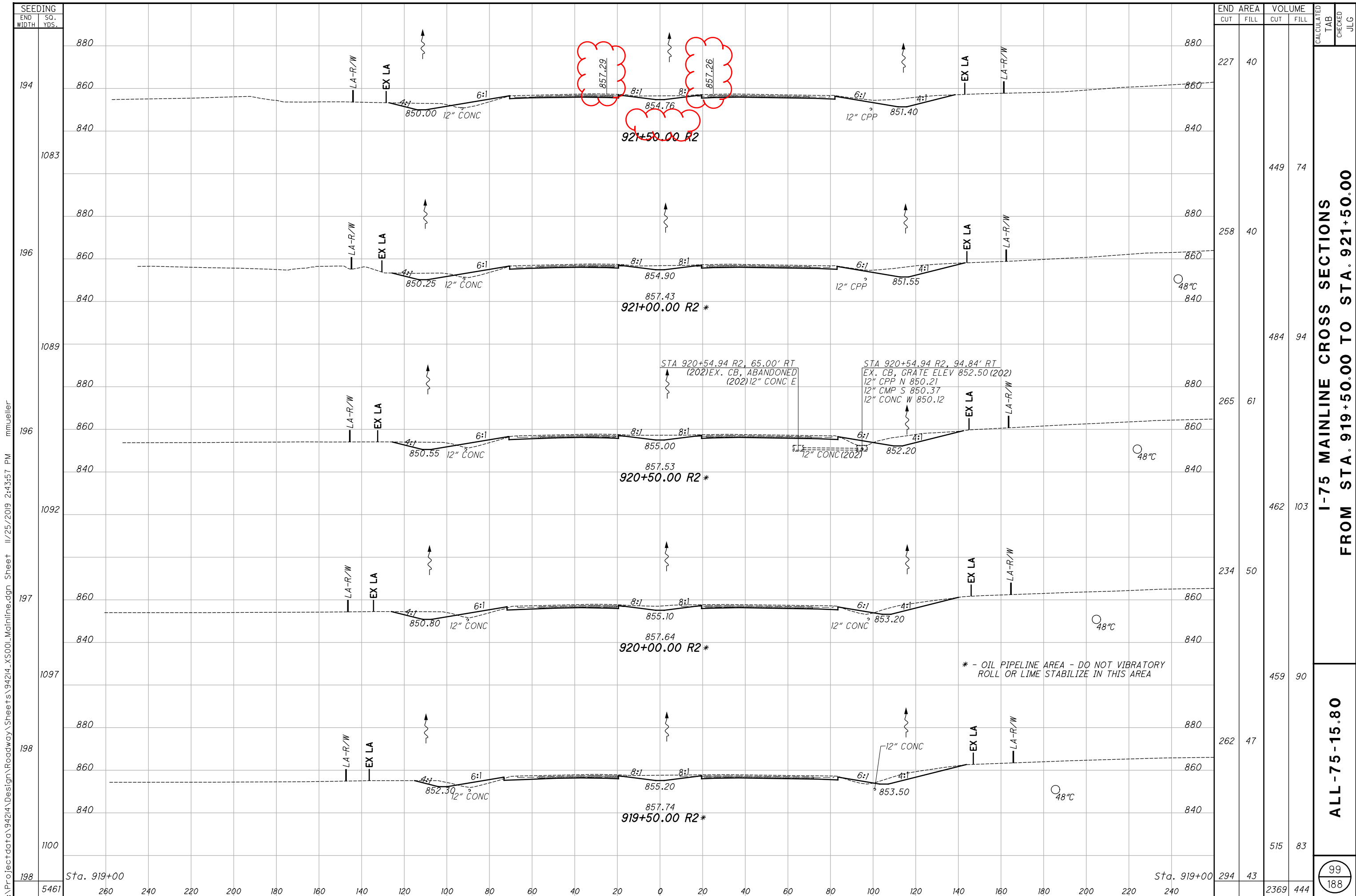
STA 900+93.74, 76.59' RT
 EX. 15" CPP S 864.00 (202)

15" CONC (202)

I-75 MAINLINE CROSS SECTIONS
 FROM STA. 900+50.00 TO STA. 902+50.00

ALL -75-15.80

89
188

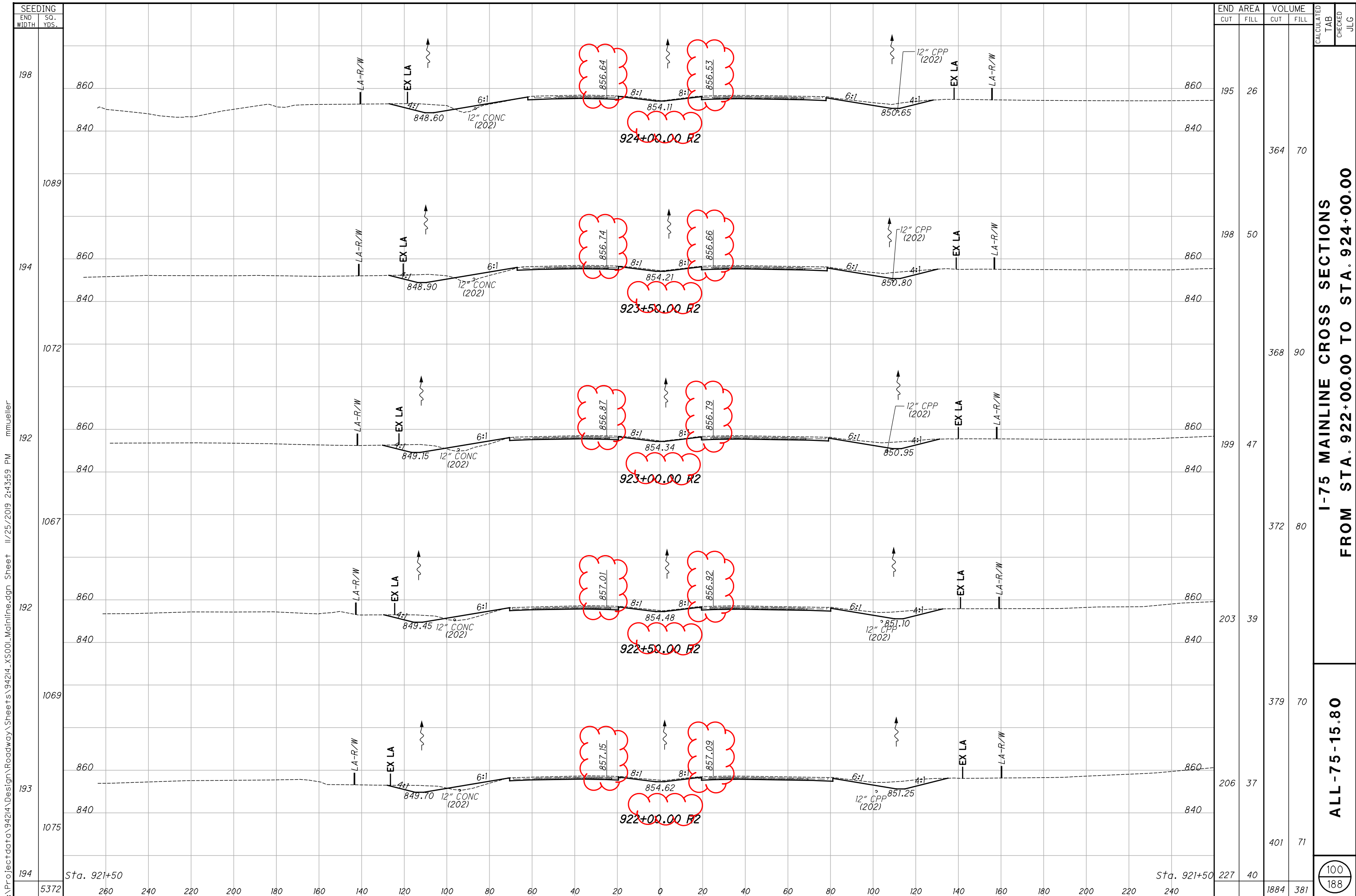


I:\Project\data\94214\Design\Roadway\Sheets\94214_XS00_Mainline.dgn Sheet II/25/2019 2:43:57 PM mmueller

SEEDING	END AREA		VOLUME		CALCULATED	CHECKED	JLG
	CUT	FILL	CUT	FILL			
194	227	40					
1083			449	74			
196	258	40					
1089			484	94			
196	265	61					
1092			462	103			
197	234	50					
1097			459	90			
198	262	47					
1100			515	83			
198	294	43					
5461			2369	444			

**I-75 MAINLINE CROSS SECTIONS
FROM STA. 919+50.00 TO STA. 921+50.00**

ALL -75-15.80



I:\Project\data\94214\Design\Roadway\Sheets\94214_XS00_Mainline.dgn Sheet II/25/2019 2:43:59 PM mmueller

**I-75 MAINLINE CROSS SECTIONS
FROM STA. 922+00.00 TO STA. 924+00.00**

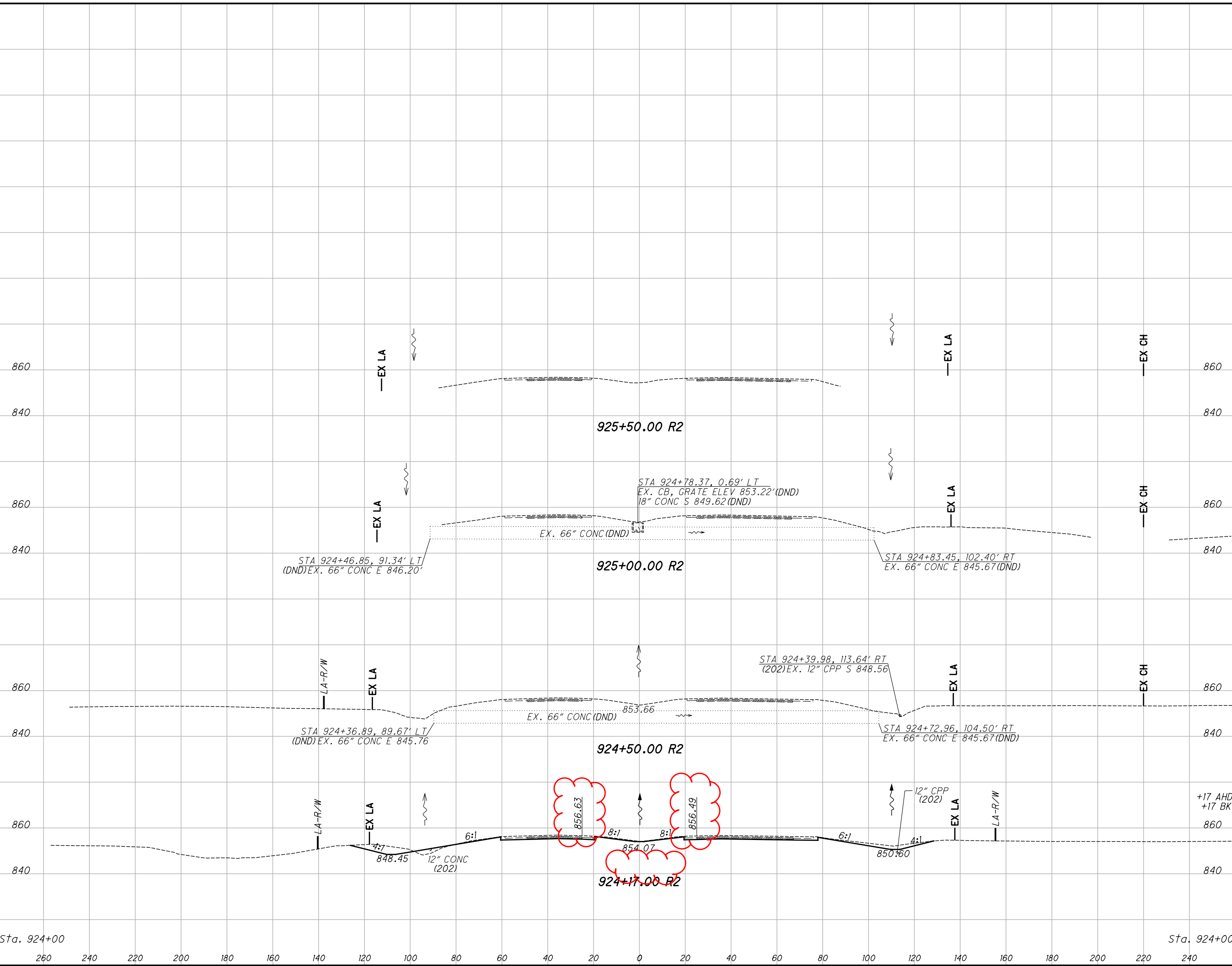
ALL -75-15.80

100
188

CALCULATED
TAB
CHECKED
JLG

I:\Project\data\94214\Design\Roadway\Sheets\94214_XS00_Mainline.dgn Sheet 11/25/2019 2:44:00 PM mmueller

SEEDING	
END WIDTH	SO. YDS.
740	
260	
240	
220	
200	
180	
160	
140	
120	
100	
80	
60	
40	
20	
0	
20	
40	
60	
80	
100	
120	
140	
160	
180	
200	
220	
240	



END AREA		VOLUME	
CUT	FILL	CUT	FILL
195	26	126	20
193	27	172	23
		77	12
		116	15

I-75 MAINLINE CROSS SECTIONS
FROM STA. 924+17.00 TO STA. 925+50.00
ALL -75-15.80
 CALCULATED TAB CHECKED JLG

101
188