

ODOT Dist 4 - Ashtabula County - FINAL
No Passing Zone Log (ATB)

Route: 0007R (SATBSR00007**C)

Length: 27.258

Direction: North

From: 0.000 LEAVE TRU CO

To: 27.258 ENTER CONNEAUT

Scale: 1.00 mile/page

Length	Left	C/L	Right	Length	Control Points
0.043	15.000 14.957				
				14.950	C0302 NORTH RICHMOND LT
				14.950	U0006R - END OVERLAP RT

0.043

15.000
14.957

| |

14.950 C0302 NORTH RICHMOND LT
 14.950 U0006R - END OVERLAP RT

ODOT Dist 4 - Ashtabula County - FINAL
No Passing Zone Log (ATB)

Route: 0007R (SATBSR00007**C)

Length: 27.258

Direction: North

From: 0.000 LEAVE TRU CO

To: 27.258 ENTER CONNEAUT

Length	Left	C/L	Right	Length	Control Points
--------	------	-----	-------	--------	----------------

Scale: 1.00 mile/page

15.797 T0301 ANDERSON LT

0.036

15.036

15.000

15.000 Mile Post = 015

Sheet total equivalent length of solid line: 0.286

Accum. total: 7.679

ODOT Dist 4 - Ashtabula County - FINAL
 No Passing Zone Log (ATB)

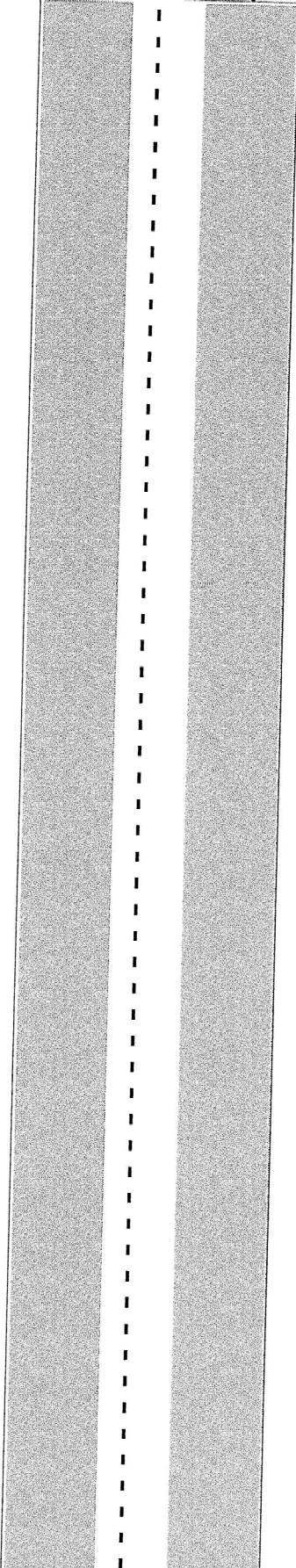
Route: 0007R (SATBSR00007**C)

Length: 27.258 Direction: North

From: 0.000 LEAVE TRU CO

To: 27.258 ENTER CONNEAUT

Length Left C/L Right Length Control Points Scale: 1.00 mile/page



16.689 T0337 TURNER/SCHRAMBLING

16.094 T0336 HALL RT

16.005 Mile Post = 016

Sheet total equivalent length of solid line: 0.250

Accum. total: 7.929

ODOT Dist 4 - Ashtabula County - FINAL
 No Passing Zone Log (ATB)

Route: 0007R (SATBSR00007**C)

Length: 27.258

Direction: North

From: 0.000 LEAVE TRU CO

To: 27.258 ENTER CONNEAUT

Length Left C/L Right Length Control Points Scale: 1.00 mile/page

0.130

17.651

17.521

17.561

17.443

0.118

17.569 CO456 MARCY RT

17.515 S0167R LT

17.268

↑ 45mph

17.038 Mile Post = 017

Sheet total equivalent length of solid line: 0.488

Accum. total: 8.417

ODOT Dist 4 - Ashtabula County - FINAL
 No Passing Zone Log (ATB)

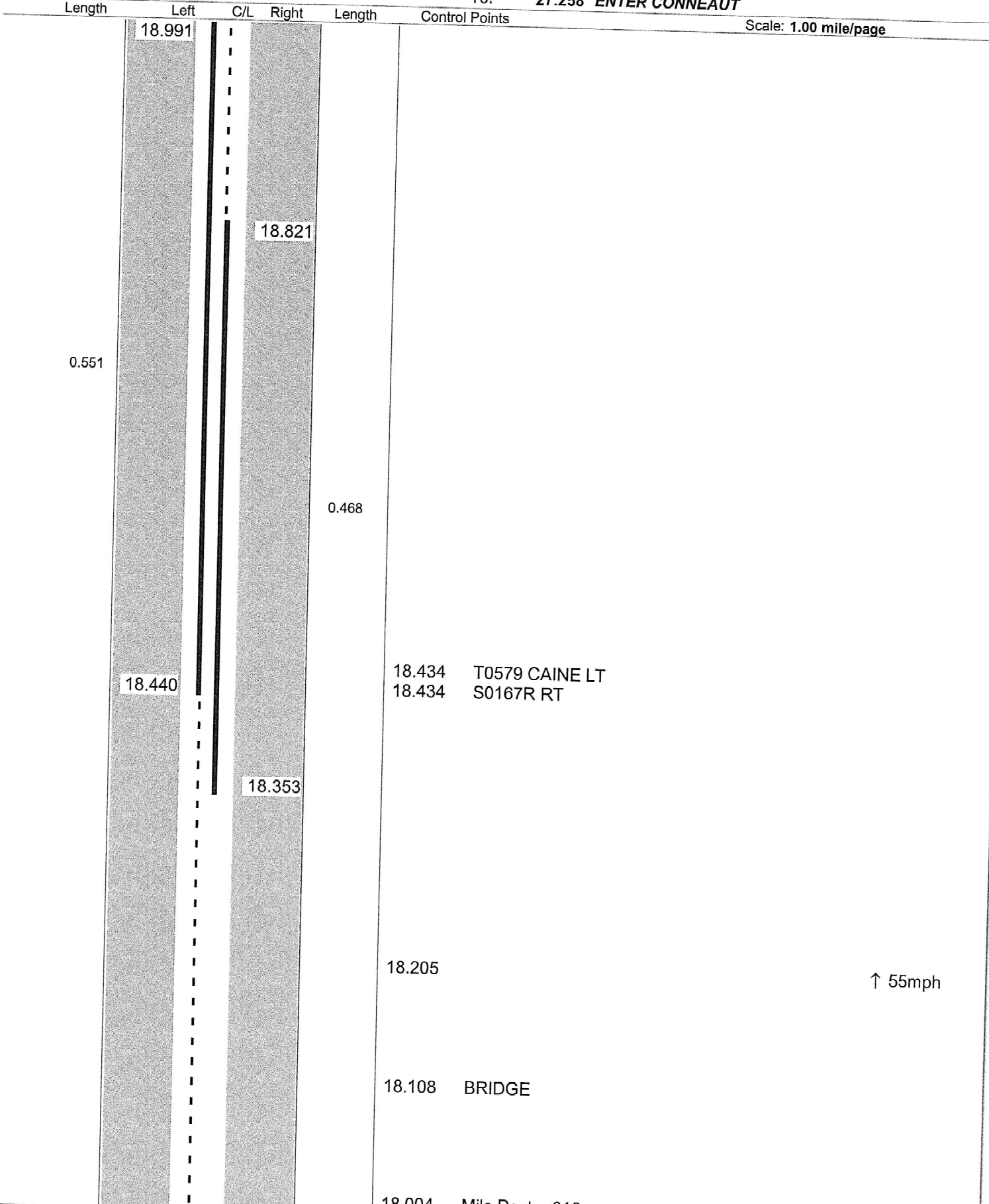
Route: 0007R (SATBSR00007**C)

Length: 27.258

Direction: North

From: 0.000 LEAVE TRU CO

To: 27.258 ENTER CONNEAUT



Sheet total equivalent length of solid line: 1.174

Accum. total: 9.591

ODOT Dist 4 - Ashtabula County - FINAL
 No Passing Zone Log (ATB)

Route: 0007R (SATBSR00007**C)

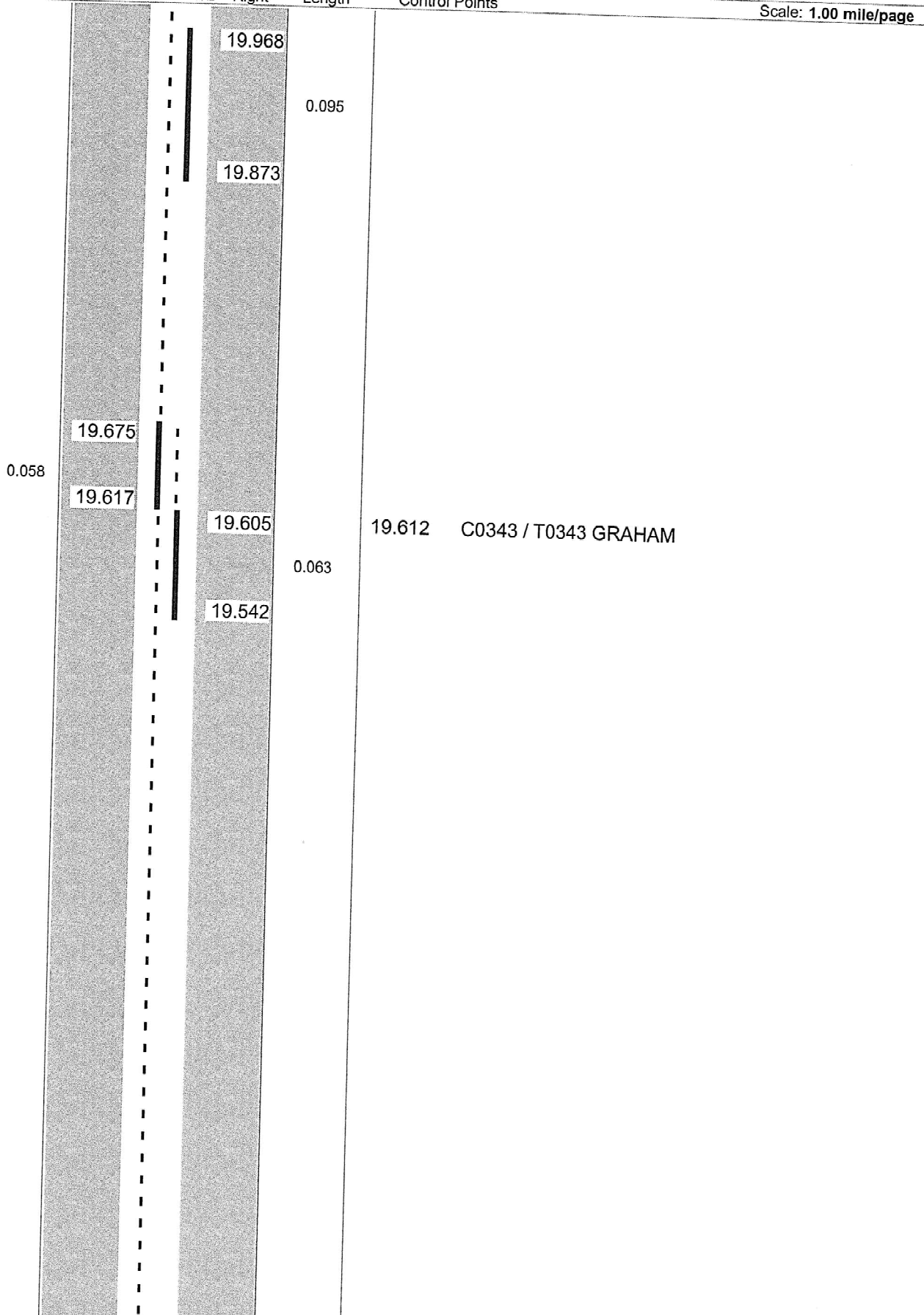
Length: 27.258

Direction: North

From: 0.000 LEAVE TRU CO

To: 27.258 ENTER CONNEAUT

Length Left C/L Right Length Control Points Scale: 1.00 mile/page



Sheet total equivalent length of solid line: 0.466

Accum. total: 10.057

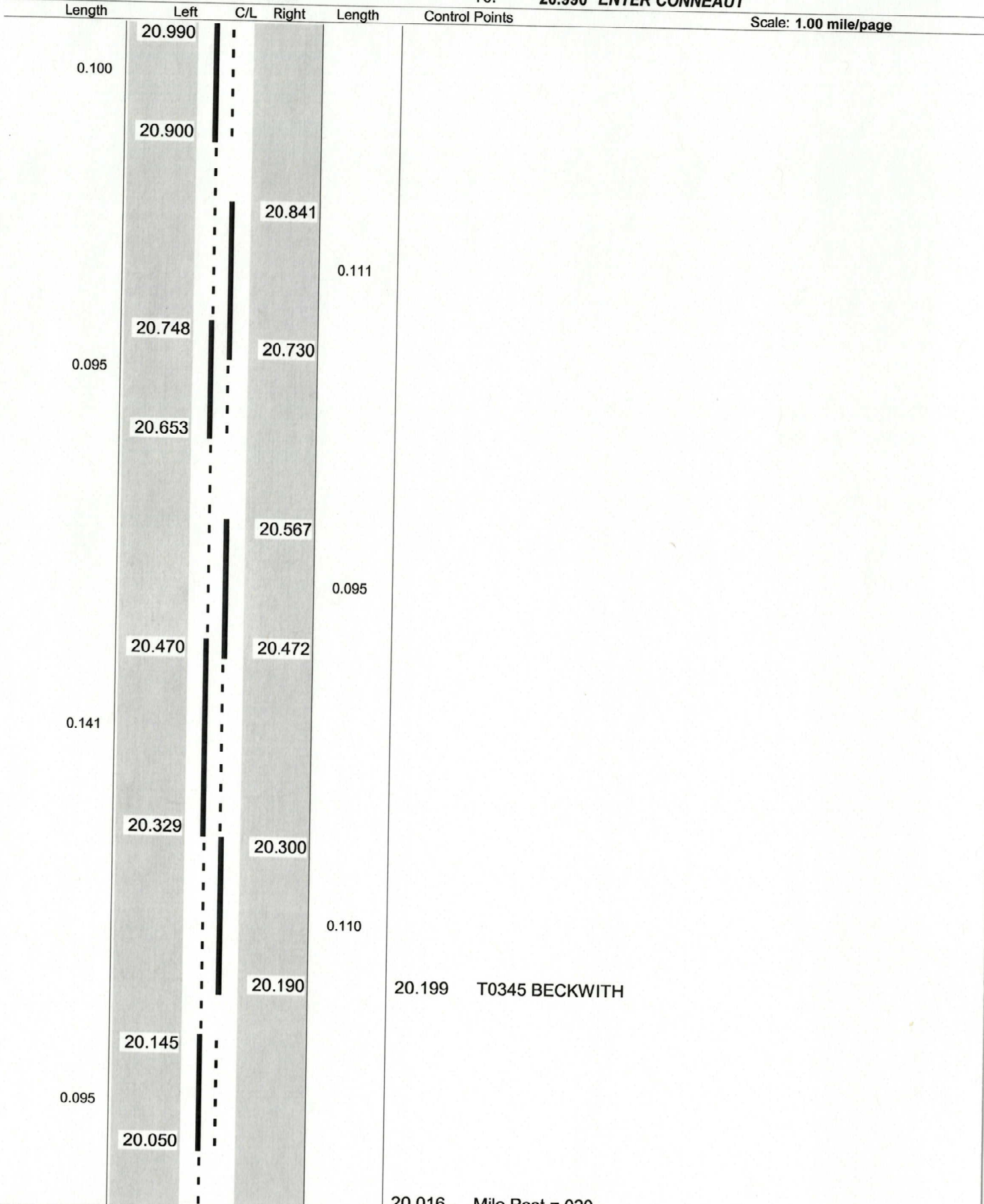
**ODOT District 4
No Passing Zone Log (ATB)**

15 22

Route: 0007R (SATBSR00007**C)
Length: 0.990 Direction: North

From: 20.000 LEAVE TRU CO
To: 20.990 ENTER CONNEAUT

Scale: 1.00 mile/page



Sheet total equivalent length of solid line: 0.980

Accum. total: 0.980

ODOT Dist 4 - Ashtabula County - FINAL
 No Passing Zone Log (ATB)

Route: 0007R (SATBSR00007**C)

Length: 27.258

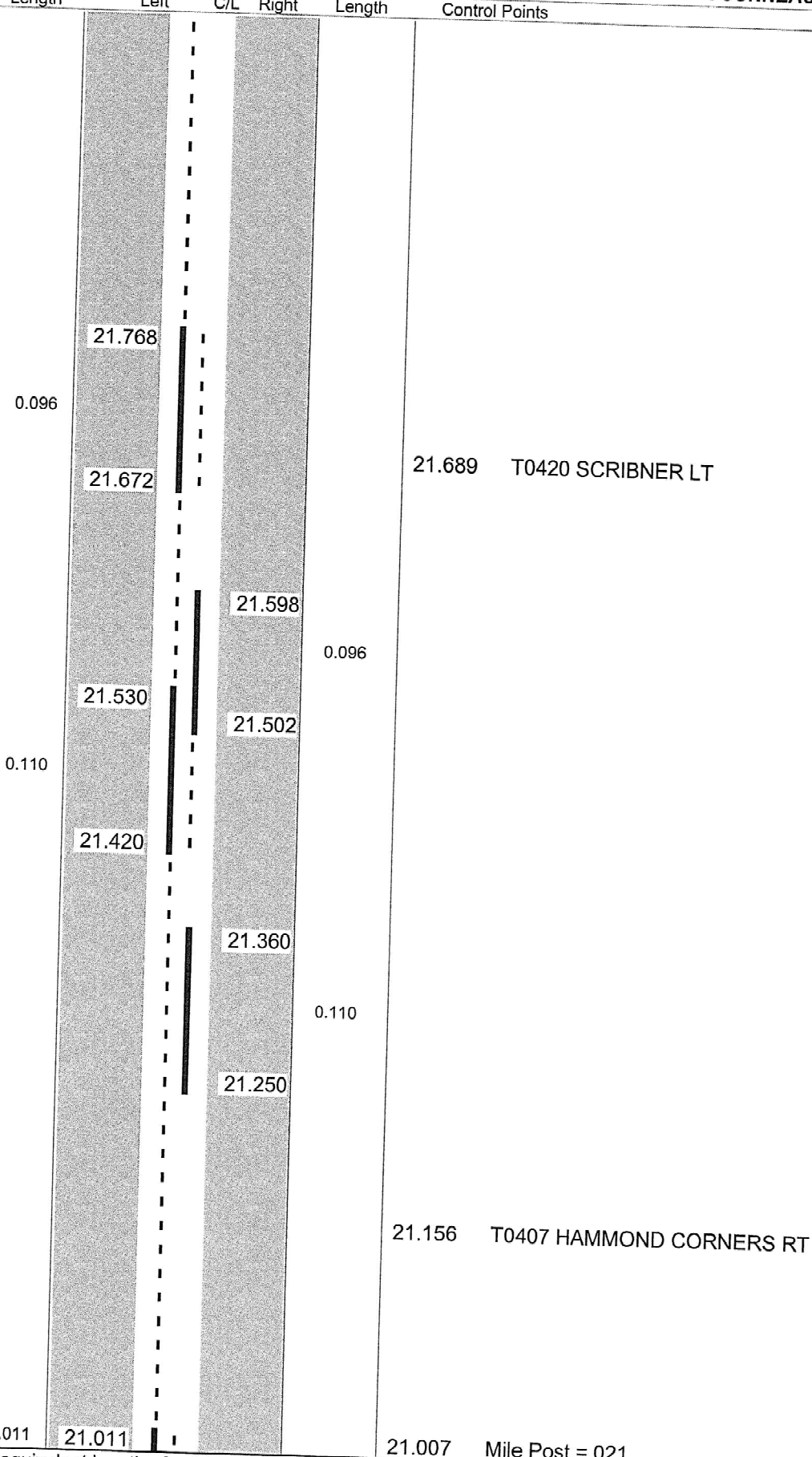
Direction: North

From: 0.000 LEAVE TRU CO

To: 27.258 ENTER CONNEAUT

Length Left C/L Right Length Control Points

Scale: 1.00 mile/page



Sheet total equivalent length of solid line: 0.666

Accum. total: 11.685

ODOT Dist 4 - Ashtabula County - FINAL
 No Passing Zone Log (ATB)

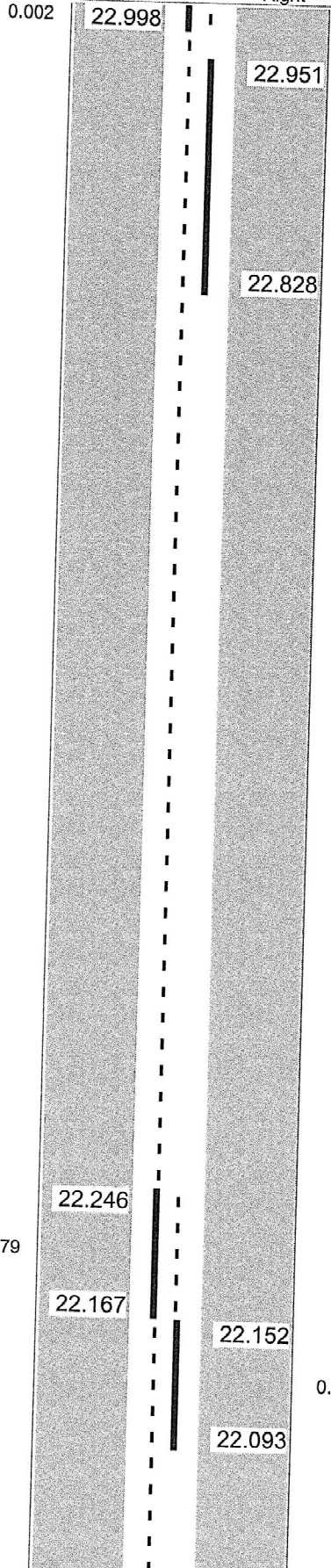
Route: 0007R (SATBSR00007**C)
 Length: 27.258

Direction: North

From: 0.000 LEAVE TRU CO
 To: 27.258 ENTER CONNEAUT

Length	Left	C/L	Right	Length	Control Points
--------	------	-----	-------	--------	----------------

Scale: 1.00 mile/page



0.123

22.951

22.828

0.079

22.246

22.167

22.152

22.161 C0415 HILLDOM

0.059

22.093

22.011 Mile Post = 022

Sheet total equivalent length of solid line: 0.513

Accum. total: 12.198

ODOT Dist 4 - Ashtabula County - FINAL
 No Passing Zone Log (ATB)

Route: 0007R (SATBSR00007**C)

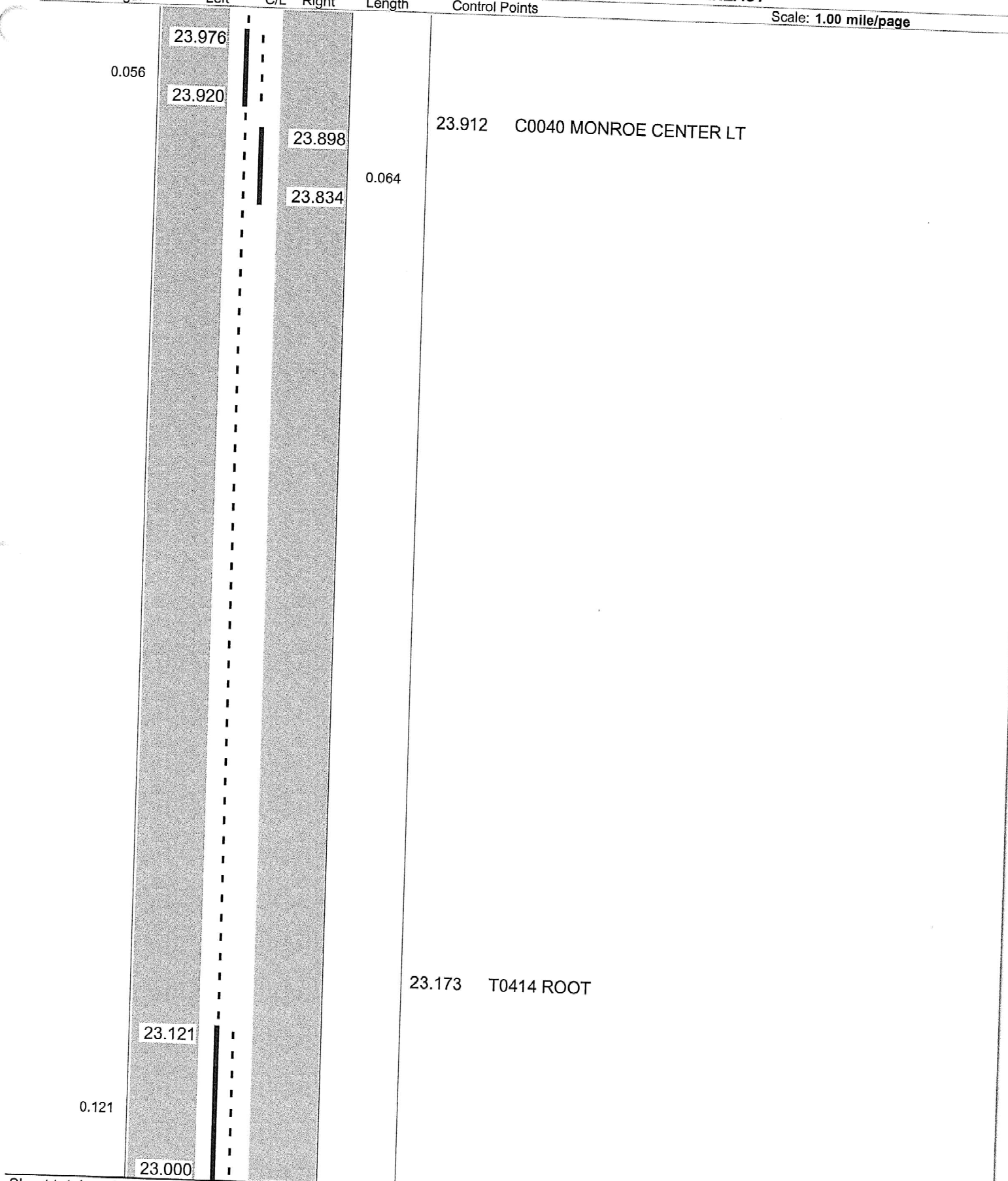
Length: 27.258

Direction: North

From: 0.000 LEAVE TRU CO

To: 27.258 ENTER CONNEAUT

Scale: 1.00 mile/page



Sheet total equivalent length of solid line: 0.491

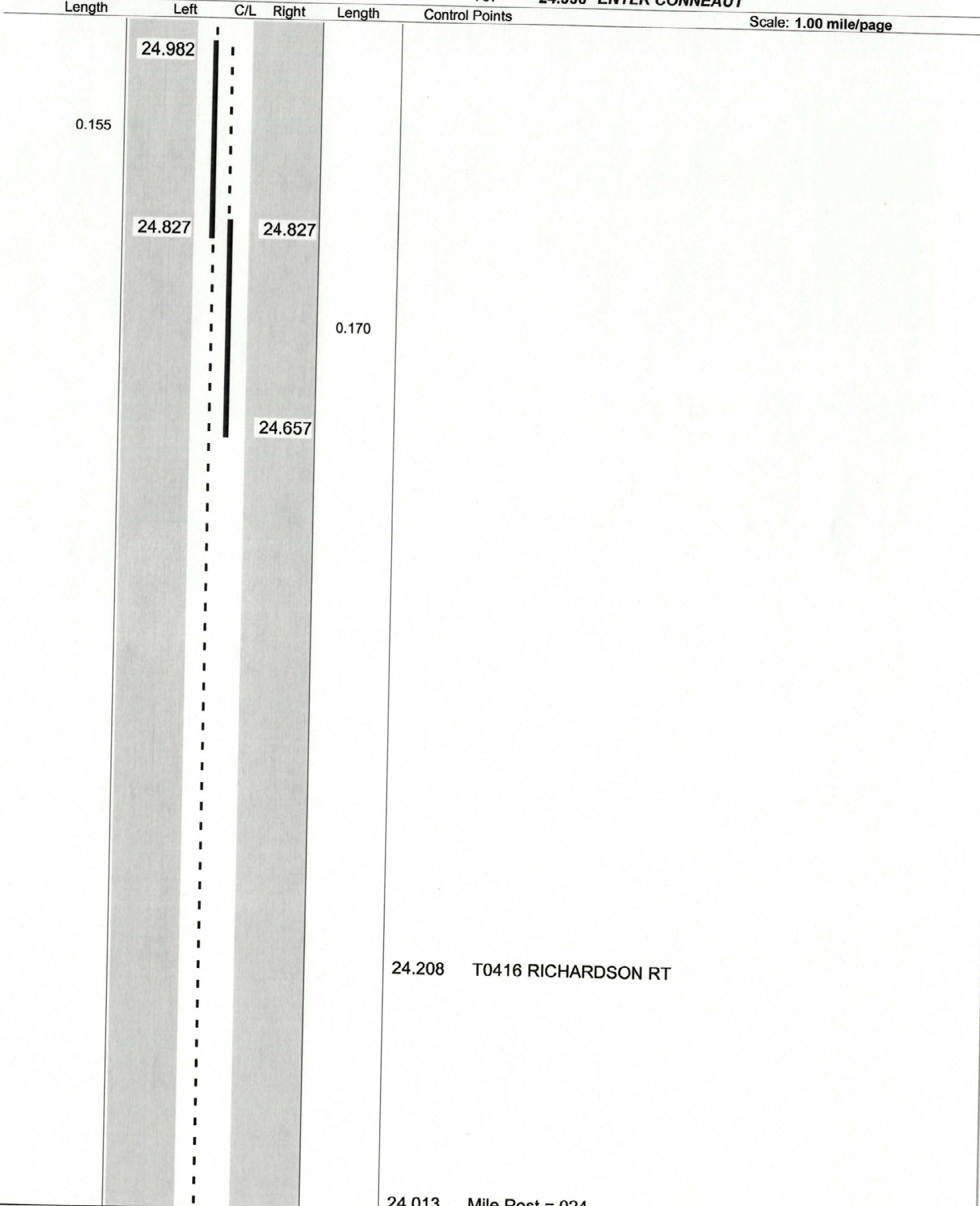
Accum. total: 12.689

ODOT District 4
No Passing Zone Log (ATB)

Route: 0007R (SATBSR00007**C)
Length: 0.990 Direction: North

From: 24.000 LEAVE TRU CO
To: 24.990 ENTER CONNEAUT

Scale: 1.00 mile/page



Sheet total equivalent length of solid line: 0.573

Accum. total: 0.573

ODOT Dist 4 - Ashtabula County - FINAL

No Passing Zone Log (ATB)

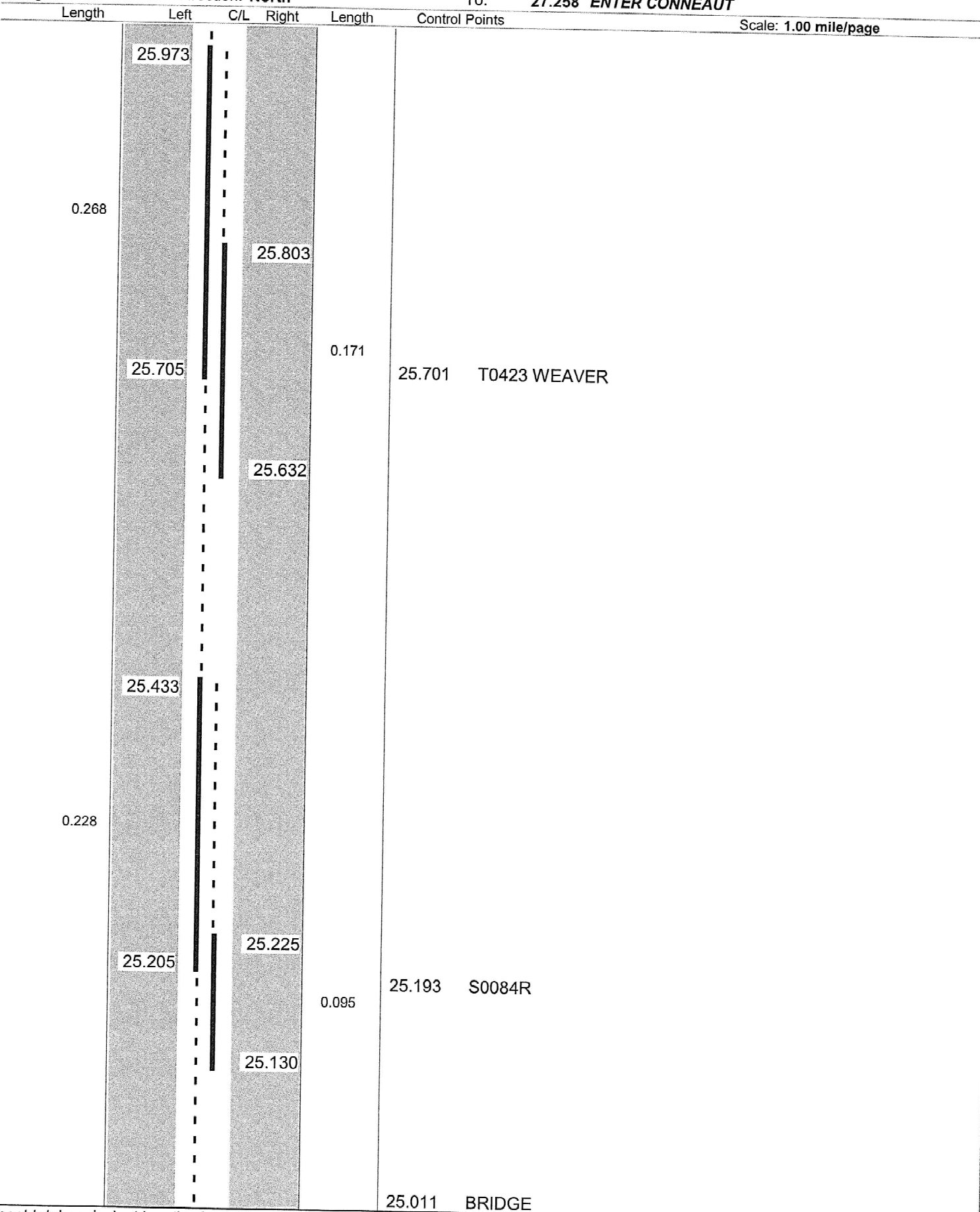
Route: 0007R (SATBSR00007**C)

Length: 27.258

Direction: North

From: 0.000 LEAVE TRU CO

To: 27.258 ENTER CONNEAUT



Sheet total equivalent length of solid line: 0.983

Accum. total: 14.232

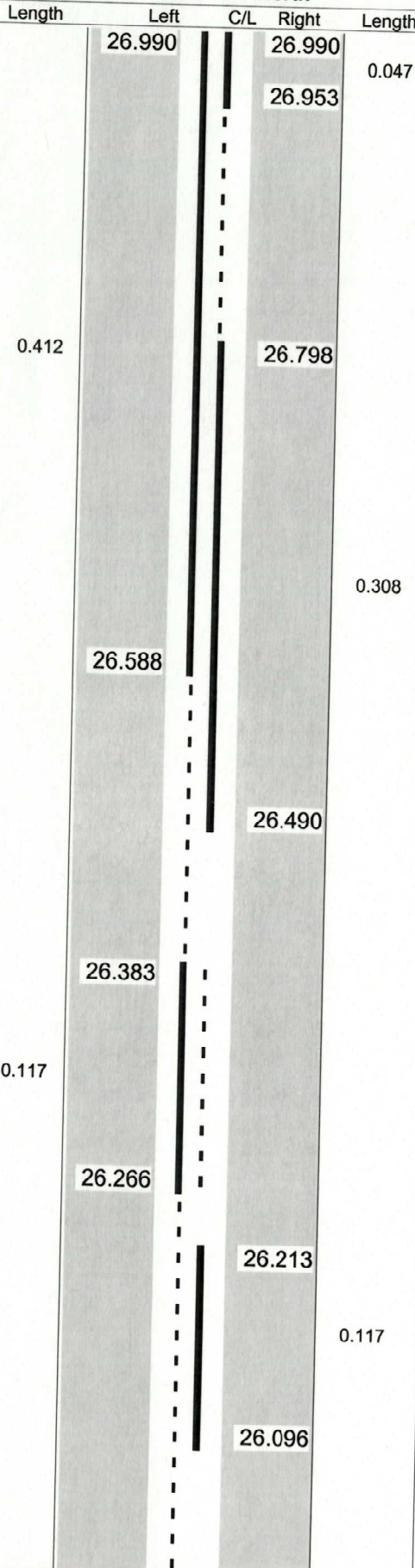
ODOT District 4
No Passing Zone Log (ATB)

Route: 0007R (SATBSR00007**C)
Length: 0.990

Direction: North

From: 26.000 LEAVE TRU CO
To: 26.990 ENTER CONNEAUT

Scale: 1.00 mile/page



Sheet total equivalent length of solid line: 1.167

Accum. total: 1.167

**ODOT District 4
No Passing Zone Log (ATB)**

Route: 0007R (SATBSR00007**C)
Length: 0.258 Direction: North

From: 27.000 LEAVE TRU CO
To: 27.258 ENTER CONNEAUT

Scale: 1.00 mile/page

Length	Left	C/L	Right	Length	Control Points
0.258	27.000		27.258	0.258	27.258 ENTER CONNEAUT
					27.196 CENTER LT
					27.023 Mile Post = 027

Sheet total equivalent length of solid line: 0.516

Accum. total: 0.516