

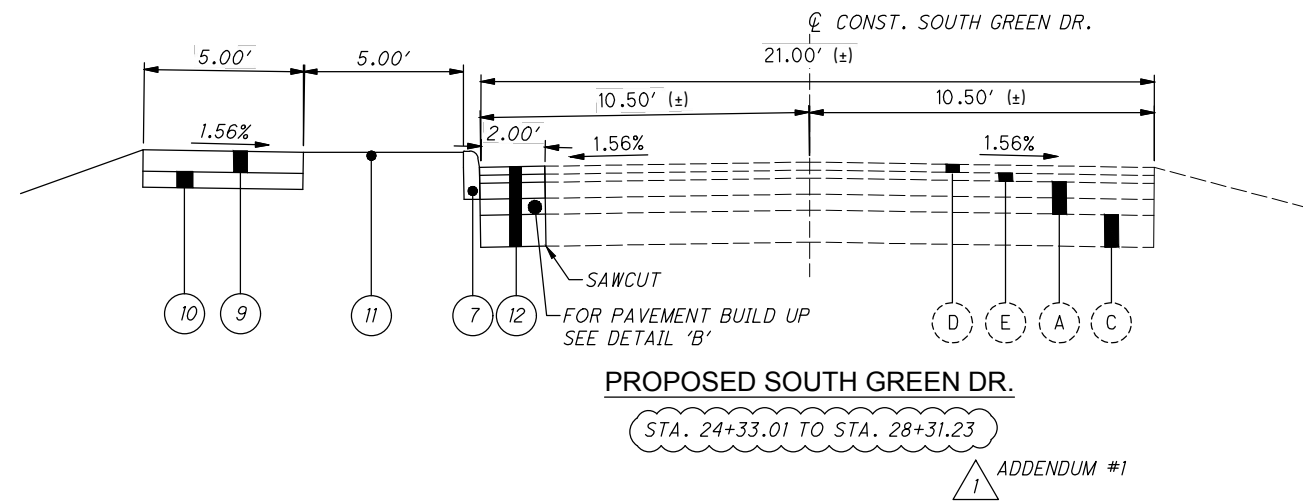
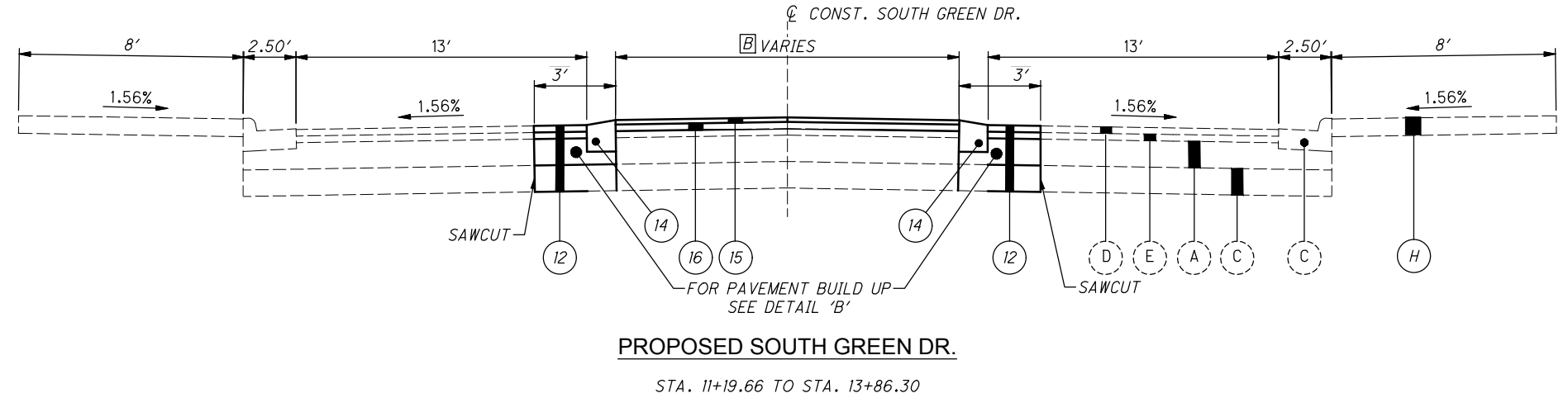
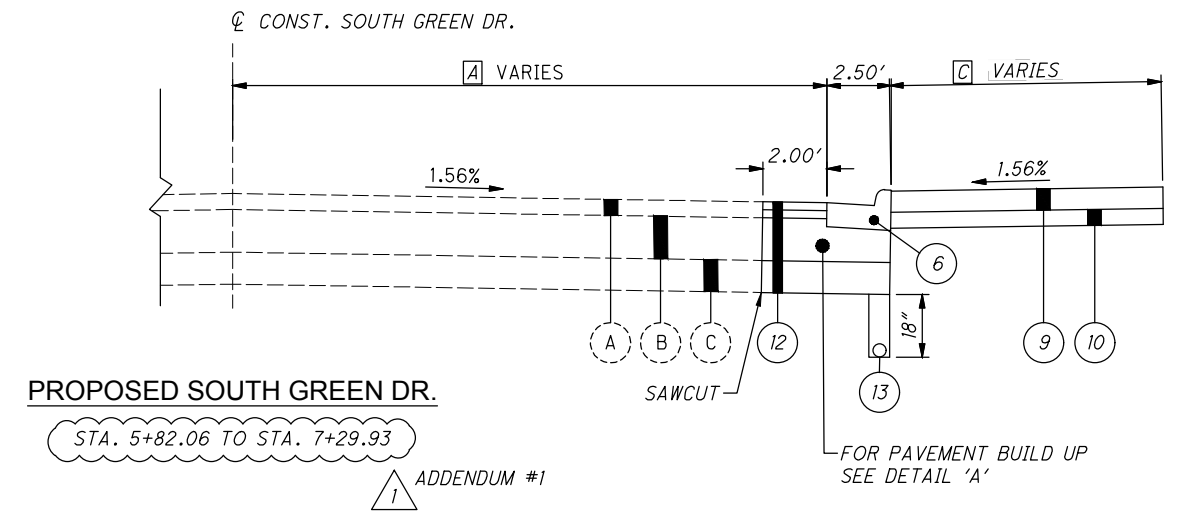
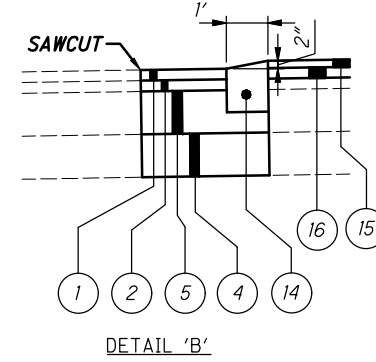
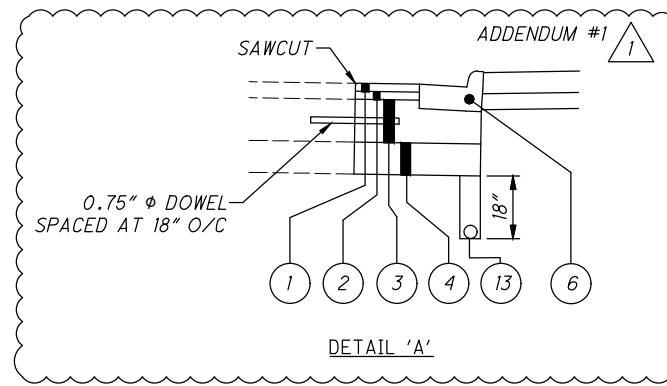
**PROPOSED LEGEND:**

- ① ITEM 441: 1.5" ASPHALT CONCRETE SURFACE COURSE, TYPE 1, (449), PG64-22
- ② ITEM 441: 1.5" ASPHALT CONCRETE INTERMEDIATE COURSE, TYPE 1, (449)
- ③ ITEM 305: 6" CONCRETE BASE, CLASS QC IP 1 ADDENDUM #1
- ④ ITEM 304: 6" AGGREGATE BASE
- ⑤ ITEM 301: 6" ASPHALT CONCRETE BASE, PG 64-22, (449)
- ⑥ ITEM 609: COMBINATION CURB AND GUTTER, TYPE 2
- ⑦ ITEM 609: CURB, TYPE 6
- ⑨ ITEM 608: 6" CONCRETE WALK
- ⑩ ITEM 304: 4" AGGREGATE BASE
- ⑪ ITEM 659: SEEDING AND MULCHING, CLASS 1
- ⑫ ITEM 202: PAVEMENT REMOVED
- ⑬ ITEM 605: 4" BASE PIPE UNDERDRAIN
- ⑭ ITEM 609: CURB, TYPE 10-B, AS PER PLAN
- ⑮ ITEM 441: 1.25" ASPHALT CONCRETE SURFACE COURSE, TYPE 1, (449), PG64-22
- ⑯ ITEM 441: 1.75" ASPHALT CONCRETE INTERMEDIATE COURSE, TYPE 1, (449)

**EXISTING LEGEND:**

- (A) ASPHALT CONCRETE
- (B) CONCRETE BASE
- (C) AGGREGATE BASE
- (D) ASPHALT CONCRETE SURFACE COURSE
- (E) ASPHALT CONCRETE INTERMEDIATE COURSE
- (F) CURB AND GUTTER
- (G) PAVEMENT
- (H) CONCRETE WALK

- A VARIES FROM 19.00' TO 9.00' FROM STA. 5+82.06 TO STA. 6+45.50  
9.00' FROM STA. 6+45.50 TO STA. 6+59.38  
VARIES FROM 9.00' TO 18.00' FROM STA. 6+59.38 TO STA. 7+29.93
- B VARIES FROM 7.05' TO 8.79' FROM STA. 11+25.60 TO STA. 11+64.61  
VARIES FROM 8.79' TO 6.38' FROM STA. 11+25.51 TO STA. 13+11.13  
VARIES FROM 6.38' TO 7.14' FROM STA. 13+11.13 TO STA. 13+82.50
- C VARIES FROM 0.50' TO 18.50' FROM STA. 5+82.06 TO STA. 6+43.01  
VARIES FROM 18.50' TO 11.00' FROM STA. 6+43.01 TO STA. 6+45.52  
11.00' FROM STA. 6+45.52 TO STA. 6+58.00  
VARIES FROM 11.00' TO 2.00' FROM STA. 6+58.00 TO STA. 7+29.96



P:\Ohio\_University\20221060.000\_South\_Green\_Ped\_Safety\_Design\Drawings\Trans\Sheets\Roadway\GY001.dwg 01-Apr-24 8:06 AM

CALCULATED  
A J M  
CHECKED  
C E L

TYPICAL SECTIONS

S. GREEN DR. PEDESTRIAN SAFETY DESIGN

P:\Ohio\_University\20221060.000\_South\_Green\_Ped\_Safety\_Design\Drawings\Trans\_Sheets\Roadway\GG001.dwg 01-Apr-24 7:55 AM

SHEET NUM.													PART.	ITEM	ITEM	GRAND	UNIT	DESCRIPTION	SEE SHEET NO.
4	11	12	13	20	21	22							1	EXT	TOTAL				
<b>ROADWAY</b>																			
LS													LS	201	11001	LS	CLEARING AND GRUBBING, AS PER PLAN	4	
	319												319	202	23000	319	SY	PAVEMENT REMOVED	
	3,416												3,416	202	30000	3,416	SF	WALK REMOVED	
	286												286	202	32000	286	FT	CURB REMOVED	
	402												402	202	32500	402	FT	CURB AND GUTTER REMOVED	
	5			15	87	44							151	203	10000	151	CY	EXCAVATION	
				2	1	1							4	203	20000	4	CY	EMBANKMENT	
			378										378	204	10000	378	SY	SUBGRADE COMPACTION	
	5,237												5,237	608	13000	5,237	SF	6" CONCRETE WALK	
	1,561												1,561	608	52000	1,561	SF	CURB RAMP	
LS	10												10	608	53021	10	SF	DETECTABLE WARNING, AS PER PLAN	
													LS	SPECIAL	69098400	LS		SPECIAL - LANDSCAPE DOCUMENTATION	
<b>EROSION CONTROL</b>																			
2													2	659	00100	2	EACH	SOIL ANALYSIS TEST	
20													20	659	00300	20	CY	TOPSOIL	
				31	97	54							182	659	10001	182	SY	SEEDING AND MULCHING, AS PER PLAN	
													9	659	14000	9	SY	REPAIR SEEDING AND MULCHING	
													9	659	15000	9	SY	INTER-SEEDING	
0.02													0.02	659	20000	0.02	TON	COMMERCIAL FERTILIZER	
0.5													0.5	659	35000	0.5	MGAL	WATER	
													5,000	832	30000	5,000	EACH	EROSION CONTROL	
<b>DRAINAGE</b>																			
			146										146	605	06000	146	FT	4" BASE PIPE UNDERDRAINS	
			40										40	611	00410	40	FT	4" CONDUIT, TYPE F FOR UNDERDRAIN OUTLET	
	2												2	611	98630	2	EACH	CATCH BASIN ADJUSTED TO GRADE	
<b>PAVEMENT</b>																			
			1,347										1,347	252	01500	1,347	FT	FULL DEPTH PAVEMENT SAWING	
			72										72	301	56000	72	CY	ASPHALT CONCRETE BASE, PG64-22, (449), 6"	
	64												64	304	20000	64	CY	AGGREGATE BASE, 4"	
			118										118	304	20000	118	CY	AGGREGATE BASE, 6"	
			333										333	305	10010	333	SY	6" CONCRETE BASE, CLASS QC 1P <i>ADDENDUM #1</i>	
			21										21	407	10000	21	GAL	TACK COAT	
			10										10	441	70000	10	CY	ASPHALT CONCRETE SURFACE COURSE, TYPE 1, (449), PG64-22, 1.25"	
			16										16	441	70000	16	CY	ASPHALT CONCRETE SURFACE COURSE, TYPE 1, (449), PG64-22, 1.5"	
			16										16	441	70200	16	CY	ASPHALT CONCRETE INTERMEDIATE COURSE, TYPE 1, (449), 1.5"	
			14										14	441	70200	14	CY	ASPHALT CONCRETE INTERMEDIATE COURSE, TYPE 1, (449), 1.75"	
	106												106	609	12000	106	FT	COMBINATION CURB AND GUTTER, TYPE 2	
	599												599	609	26000	599	FT	CURB, TYPE 6	
	542												542	609	33201	542	FT	CURB, TYPE 10-B, AS PER PLAN	
<b>TRAFFIC CONTROL</b>																			
			70										70	630	03100	70	FT	GROUND MOUNTED SUPPORT, NO. 3 POST	
			25										25	630	80100	25	SF	SIGN, FLAT SHEET	
			4										4	630	84900	4	EACH	REMOVAL OF GROUND MOUNTED SIGN AND DISPOSAL	
			4										4	630	85100	4	EACH	REMOVAL OF GROUND MOUNTED SIGN AND REERECTION	
			6										6	630	97700	6	EACH	SIGNING, MISC.:SOLAR POWERED RECTANGLAR RAPID FLASHING BEACON (RRFB) SIGN ASSEMBLY	
			6										6	632	64020	6	EACH	PEDESTAL FOUNDATION	
	0.14												0.14	642	00300	0.14	MILE	CENTER LINE, TYPE 1	
	64												64	642	00404	64	FT	CHANNELIZING LINE, 12", TYPE 1	
	26												26	642	00500	26	FT	STOP LINE, TYPE 1	
	184												184	642	00620	184	FT	CROSSWALK LINE, 12", TYPE 1	
	746												746	642	00630	746	FT	CROSSWALK LINE, 24", TYPE 1	
	335												335	642	00700	335	FT	TRANSVERSE/DIAGONAL LINE, TYPE 1	
	1												1	642	30020	1	EACH	REMOVAL OF PAVEMENT MARKING	
	0.11												0.11	642	30030	0.11	MILE	REMOVAL OF PAVEMENT MARKING	

CALCULATED	MVN	CHECKED	CEL
GENERAL SUMMARY			
S. GREEN DR. PEDESTRIAN SAFETY DESIGN			
9			
34			

P:\Ohio\_University\20221060.000\_South\_Green\_Ped\_Safety\_Design\_Drawings\Trans\_Sheets\Drawings\Roadway\GS003.dwg\_01-Apr-24 7:50 AM

STATION RANGE		TYPICAL SECTION	SIDE	DISTANCE (D) FT	AVERAGE WIDTH (W) FT	SURFACE AREA (A) A=DxW/9 SQ YD	CADD GENERATED AREA SQ YD	204		252		301		304		305		407	441		441		441	441	605	611												
								SUBGRADE COMPACTION SY	FULL DEPTH PAVEMENT SAWING FT	ASPHALT CONCRETE BASE, PG64-22, (449), 6" CY	AGGREGATE BASE, 6" CY	6" CONCRETE BASE, CLASS QC1 ADDENDUM #1 SY	TACK COAT GAL	ASPHALT CONCRETE SURFACE COURSE, TYPE 1, (449), PG64-22, 1.5" CY	ASPHALT CONCRETE SURFACE COURSE, TYPE 1, (449), PG64-22, 1.5" CY	ASPHALT CONCRETE INTERMEDIATE COURSE, TYPE 1, (449), 1.5" CY	ASPHALT CONCRETE INTERMEDIATE COURSE, TYPE 1, (449), 1.5" CY	4" BASE PIPE UNDERDRAINS FT	4" CONDUIT, TYPE F FOR UNDERDRAIN OUTLET FT																			
	TO																																					
3+00.61	3+25.31		RT				9.00	9.00			1.50	1.50	9.00	0.50			0.38																					
5+81.80	7+30.10		RT				32.00	32.00				9.33	56.00	1.76			1.33																					
8+75.95	8+93.01		RT				4.00	4.00			0.67	0.67	4.00	0.22			0.17																					
9+79.37	10+40.82		LT				18.00	18.00			3.00	3.00	18.00	0.99			0.75																					
10+76.90	11+19.87		LT				15.00	15.00			2.50	2.50	15.00	0.83			0.63																					
11+19.66	13+86.30		LT/RT				121.96	121.96			30.17	30.17		6.71			5.08																					
9+79.37	10+40.82		LT				17.00	17.00			2.83	2.83	17.00	0.94			0.71																					
10+76.90	11+19.87		LT				14.00	14.00			2.33	2.33	14.00	0.77			0.58																					
3+64.71	3+82.38		RT				5.00	5.00			0.83	0.83	5.00	0.28			0.21																					
6+46.02	6+56.59		LT				3.00	3.00			0.50	0.50	3.00	0.17			0.13																					
6+57.46	6+68.03		LT				3.00	3.00			0.50	0.50	3.00	0.17			0.13																					
6+97.74	7+16.21		LT				4.00	4.00			0.67	0.67	4.00	0.22			0.17																					
8+76.73	8+93.02		RT				5.00	5.00			0.83	0.83	5.00	0.28			0.21																					
10+82.15	10+92.98		RT				2.00	2.00			0.33	0.33	2.00	0.11			0.08																					
13+93.10	14+04.99		LT				2.00	2.00			0.33	0.33	2.00	0.11			0.08																					
13+93.11	14+04.100		RT				3.33	3.33			0.56	0.56	3.33	0.18			0.14																					
16+20.26	16+30.29		RT				3.00	3.00			0.50	0.50	3.00	0.17			0.13																					
16+52.87	16+64.44		RT				8.00	8.00			1.33	1.33	8.00	0.44			0.33																					
18+00.92	18+10.07		LT				6.00	6.00			1.00	1.00	6.00	0.33			0.25																					
18+48.95	18+60.44		RT				3.00	3.00			0.50	0.50	3.00	0.17			0.13																					
22+07.20	22+19.22		LT				2.00	2.00			0.33	0.33	2.00	0.11			0.08																					
22+03.27	22+23.28		RT				3.00	3.00			0.50	0.50	3.00	0.17			0.13																					
24+16.66	28+34.29		RT				94.00	94.00			19.67	19.67		5.17			3.92																					
PAVEMENT REPAIR													1347.00			37.00	147.00							146.00	40.00													
MEDIAN													278.27					9.66			13.53																	
SUBTOTALS								377.29	1347.00	71.39	117.72	332.33	20.75	15.72	9.66	15.72	13.53	146.00	40.00																			
TOTALS CARRIED TO GENERAL SUMMARY								378	1347	72	118	333	21	16	10	16	14	146	40																			

CALCULATED	13
MYN	34
CHECKED	
CEL	

OFFICE CALCULATIONS

S. GREEN DR. PEDESTRIAN SAFETY DESIGN