

STATE OF OHIO
DEPARTMENT OF TRANSPORTATION

MEG-33-0.21 & VARIOUS
ATHENS & MEIGS COUNTIES

PROJECT DESCRIPTION

SPOT PORTLAND CEMENT CONCRETE PAVEMENT RECONSTRUCTION ON US-33 IN MEIGS COUNTY BETWEEN SLM 0.21 AND SLM 26.57. PROJECT INCLUDES LOCATIONS ATHENS US 50 SLM 21.76 & SLM 23.88.

PROJECT EARTH DISTURBED AREA: 0.00 ACRES
ESTIMATED CONTRACTOR EARTH DISTURBED AREA: 0.39 ACRES
NOTICE OF INTENT EARTH DISTURBED AREA: N/A (NOI NOT REQUIRED)

LIMITED ACCESS

THIS IMPROVEMENT IS ESPECIALLY DESIGNED FOR THROUGH TRAFFIC AND HAS BEEN DECLARED A LIMITED ACCESS HIGHWAY OR FREEWAY BY ACTION OF THE DIRECTOR IN ACCORDANCE WITH THE PROVISIONS OF SECTION 5511.02 OF THE OHIO REVISED CODE.

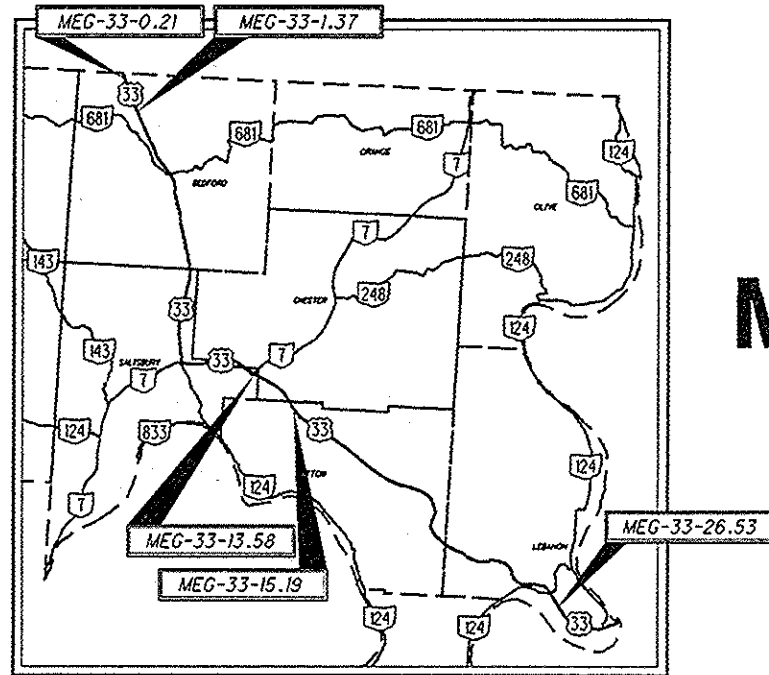
2010 SPECIFICATIONS

THE STANDARD SPECIFICATIONS OF THE STATE OF OHIO, DEPARTMENT OF TRANSPORTATION, INCLUDING CHANGES AND SUPPLEMENTAL SPECIFICATIONS LISTED IN THE PROPOSAL SHALL GOVERN THIS IMPROVEMENT.

I HEREBY APPROVE THESE PLANS AND DECLARE THAT THE MAKING OF THIS IMPROVEMENT WILL NOT REQUIRE THE CLOSING TO TRAFFIC OF THE HIGHWAY AND THAT PROVISIONS FOR THE MAINTENANCE AND SAFETY OF TRAFFIC WILL BE AS SET FORTH ON THE PLANS AND ESTIMATES.

APPROVED T. Steve Wilkins P.E.
DATE 10/12/12 DISTRICT DEPUTY DIRECTOR

APPROVED [Signature]
DATE 10-29-12 DIRECTOR, DEPARTMENT OF TRANSPORTATION



LOCATION MAP
(SEE SHEET 5 FOR ADDITIONAL MAP)
LATITUDE: 39°03'11" LONGITUDE: 081°58'27"
SCALE IN MILES



PORTION TO BE IMPROVED: _____
INTERSTATE HIGHWAY: _____
STATE & FEDERAL ROUTES: _____
COUNTY & TOWNSHIP ROADS: _____
OTHER ROADS: _____

DESIGN DESIGNATION

CURRENT ADT (2013) 5800
DESIGN YEAR ADT (2025) 6100
DESIGN HOURLY VOLUME (2025) 610
DIRECTIONAL DISTRIBUTION 0.50
TRUCKS (24 HOUR B&C) 13.0%
DESIGN SPEED 65 MPH
LEGAL SPEED 55 MPH
DESIGN FUNCTIONAL CLASSIFICATION:
PRINCIPAL ARTERIAL - OTHER (RURAL)
NHS PROJECT YES

DESIGN EXCEPTIONS

NONE REQUIRED

UNDERGROUND UTILITIES

CONTACT BOTH SERVICES
CALL TWO WORKING DAYS
BEFORE YOU DIG

CALL
1-800-362-2764
(TOLL FREE)
OHIO UTILITIES PROTECTION SERVICE
NON-MEMBERS
MUST BE CALLED DIRECTLY

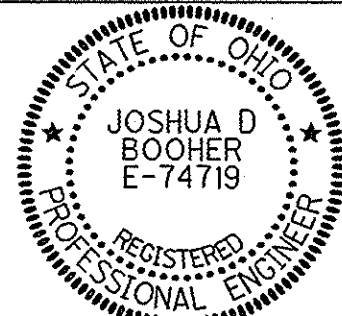
OIL & GAS PRODUCERS PROTECTIVE
SERVICE CALL: 1-800-925-0988

PLAN PREPARED BY:
OHIO DEPARTMENT OF TRANSPORTATION
DISTRICT 10
MARIETTA, OHIO

INDEX OF SHEETS:

TITLE SHEET 1
TYPICAL SECTIONS 2-4
GENERAL NOTES 5
GENERAL SUMMARY 6
PLAN & PROFILE 7-11
SUPERELEVATION TABLE 12

ENGINEERS SEAL:



SIGNED: [Signature]
DATE: 10-12-12

STANDARD CONSTRUCTION DRAWINGS

NO.	DATE	REVISIONS	SUPPLEMENTAL SPECIFICATIONS
BP-2.1	7/18/08		800 10/19/12
BP-2.2	7/18/08		823 7/20/12
BP-2.5	7/18/08		832 5/5/09
BP-9.1	4/15/05		961 10/17/08
MT-95.40	7/20/12		
MT-96.11	7/20/12		
MT-96.20	7/20/12		
MT-96.26	1/16/09		
MT-101.90	10/21/11		
TC-73.10	4/20/12		

SPECIAL PROVISIONS

FEDERAL PROJECT NO.
E100127

FID NO.
87363

CONSTRUCTION PROJECT NO.

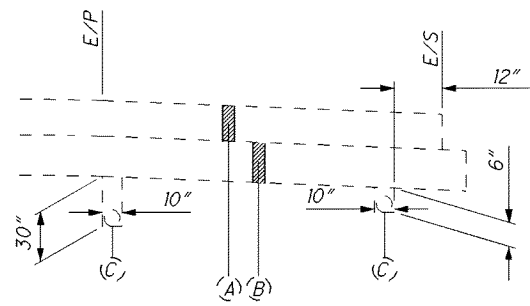
RAILROAD INVOLVEMENT
NONE

MEG-33-0.21 & VARIOUS

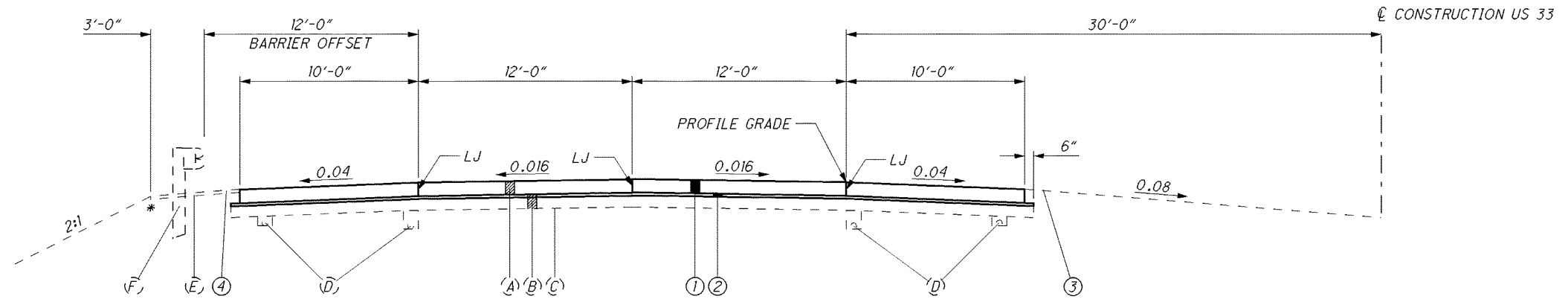
1/12

MEG - US-33-0.21 & VARIOUS
130043 PID - 87363
Dist 10 1/17/2013
Contract Proposal Available @www.contracts.dot.state.oh.us / home

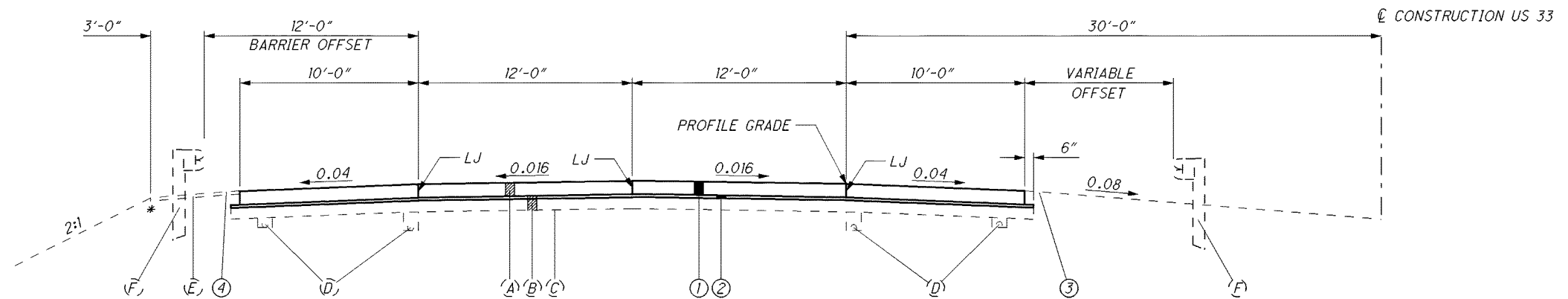
I:\project\pavement Plans 2013\MEG-87363\TITLE SHEET.dgn 18-OCT-2012



UNDERDRAIN DETAIL
NOT TO SCALE



NORMAL TANGENT SECTION
SLM 0.21 TO SLM 0.25



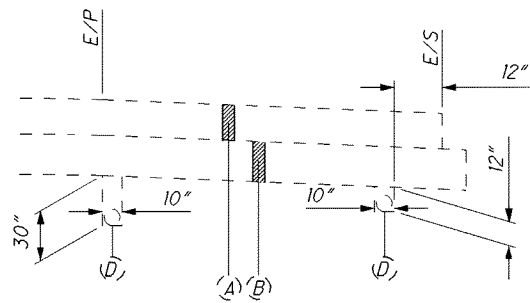
NORMAL TANGENT SECTION
SLM 1.37 TO SLM 1.40

EXISTING LEGEND

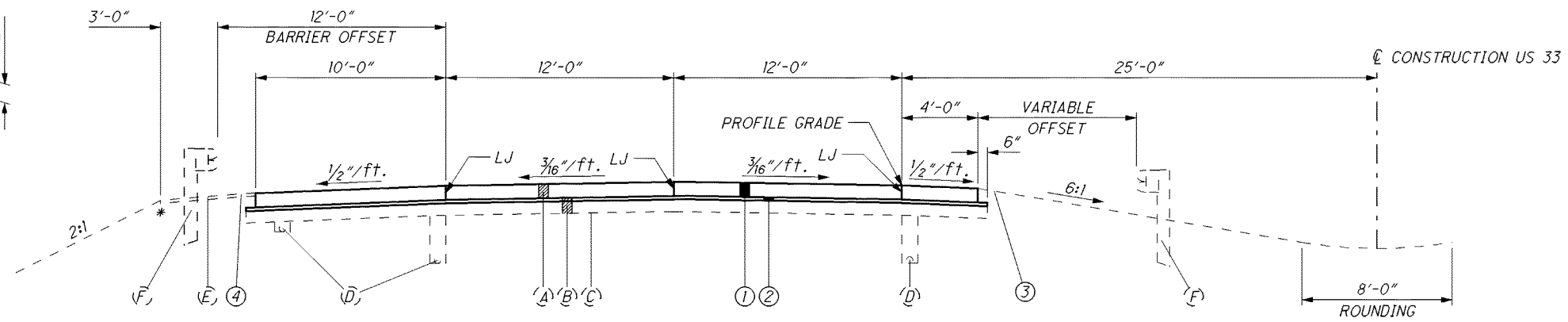
- (A) 10" PLAIN CONCRETE PAVEMENT
- (B) 6" AGGREGATE BASE
- (C) SUBGRADE COMPACTION
- (D) 4" SHALLOW (OR DEEP) PIPE UNDERDRAIN
- (E) ASPHALT CONCRETE (UNDER GUARDRAIL)
- (F) GUARDRAIL, TYPE 5

PROPOSED LEGEND

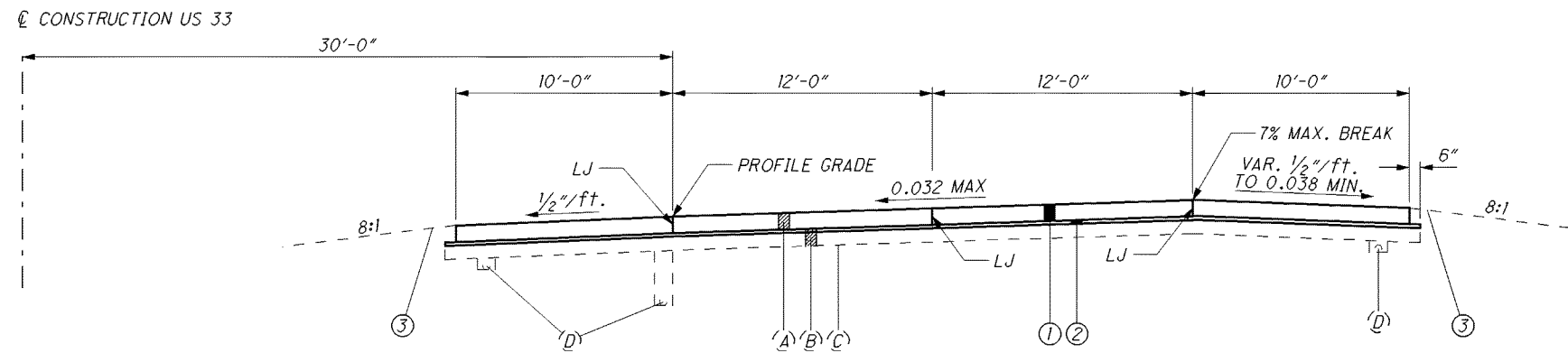
- ① ITEM 452 - 10" PLAIN CONCRETE PAVEMENT
- ② ITEM 304 - AGGREGATE BASE (VARIABLE THICKNESS)
- ③ ITEM 617 - COMPACTED AGGREGATE (VARIABLE THICKNESS)
- ④ ITEM 448 - ASPHALT CONCRETE INTERMEDIATE COURSE, TYPE 1, PG64-22 (UNDER GUARDRAIL)



UNDERDRAIN DETAIL
NOT TO SCALE



NORMAL TANGENT SECTION
SLM 13.58 WB TO SLM 13.60 WB



NORMAL TANGENT SECTION
SLM 15.19 TO SLM 15.23

EXISTING LEGEND

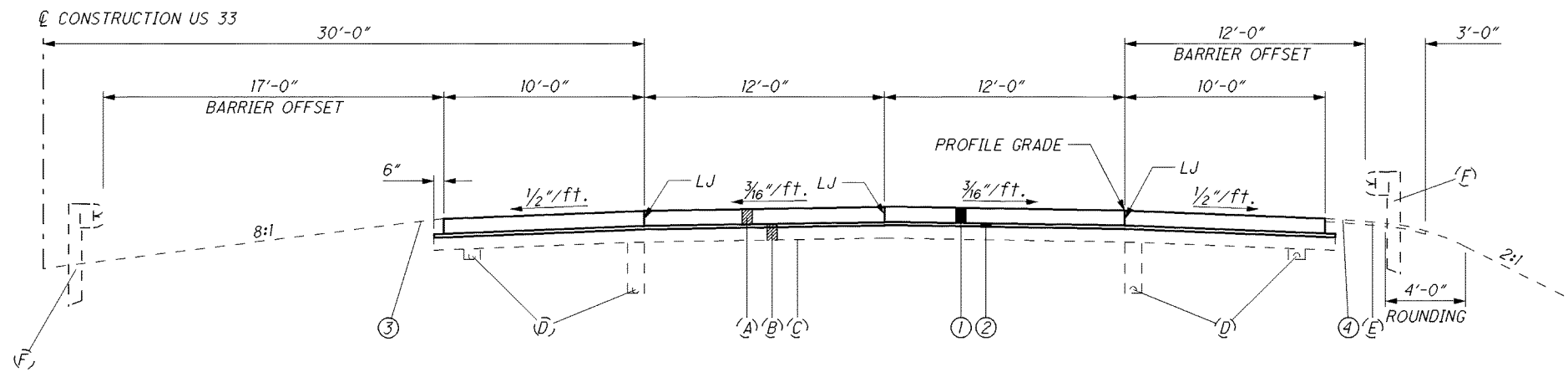
- (A) 10" PLAIN CONCRETE PAVEMENT
- (B) 6" AGGREGATE BASE
- (C) SUBGRADE COMPACTION
- (D) 4" SHALLOW (OR DEEP) PIPE UNDERDRAIN
- (E) ASPHALT CONCRETE (UNDER GUARDRAIL)
- (F) GUARDRAIL, TYPE 5

PROPOSED LEGEND

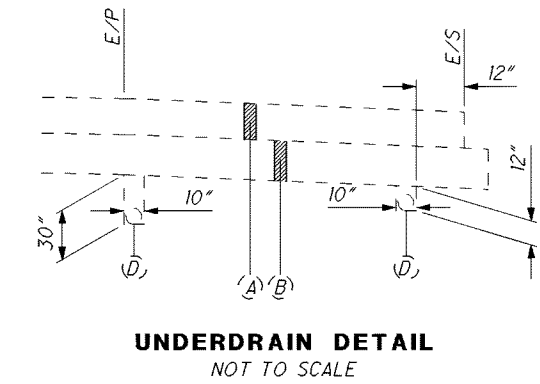
- ① ITEM 452 - 10" PLAIN CONCRETE PAVEMENT
- ② ITEM 304 - AGGREGATE BASE (VARIABLE THICKNESS)
- ③ ITEM 617 - COMPACTED AGGREGATE (VARIABLE THICKNESS)
- ④ ITEM 448 - ASPHALT CONCRETE INTERMEDIATE COURSE, TYPE 1, PG64-22 (UNDER GUARDRAIL)

I:\project\Pavement Plans_2013\10_Raising Conc-87363\Typical.dgn 12-OCT-2012 8:10AM jboohar

F:\project\Pavement Plans_2013\D10_Raising Conc-87363_Typical.dgn 12-OCT-2012 8:11AM jboohar



NORMAL TANGENT SECTION
SLM 26.53 TO SLM 26.57



EXISTING LEGEND

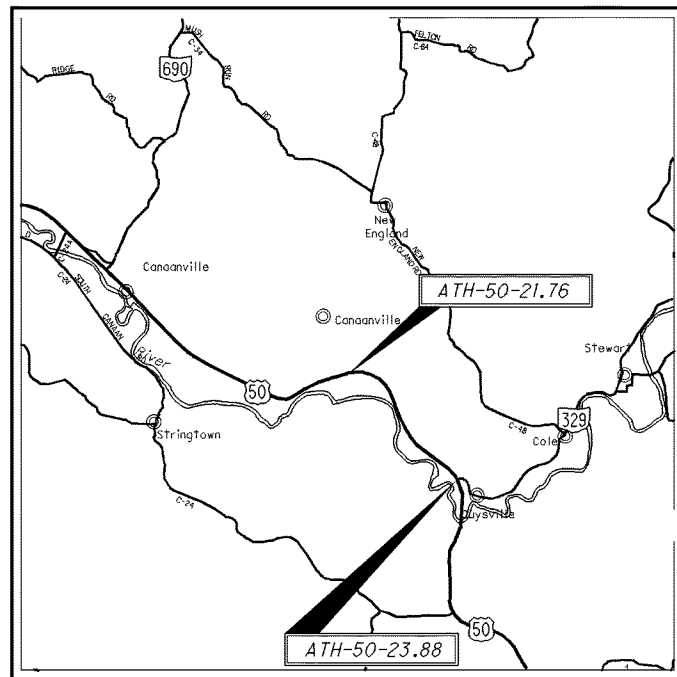
- (A) 10" PLAIN CONCRETE PAVEMENT
- (B) 6" AGGREGATE BASE
- (C) SUBGRADE COMPACTION
- (D) 4" SHALLOW (OR DEEP) PIPE UNDERDRAIN
- (E) ASPHALT CONCRETE (UNDER GUARDRAIL)
- (F) GUARDRAIL, TYPE 5

PROPOSED LEGEND

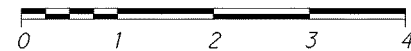
- ① ITEM 452 - 10" PLAIN CONCRETE PAVEMENT
- ② ITEM 304 - AGGREGATE BASE (VARIABLE THICKNESS)
- ③ ITEM 617 - COMPACTED AGGREGATE (VARIABLE THICKNESS)
- ④ ITEM 448 - ASPHALT CONCRETE INTERMEDIATE COURSE, TYPE 1, PG64-22 (UNDER GUARDRAIL)

TYPICAL SECTIONS

MEG-33-0.21
& VARIOUS



LOCATION MAP
SCALE IN MILES



LOCATIONS ATH-50-21.76 & ATH-50-23.88

LOCATION ATH-50-21.76 HAS BEEN ESTIMATED AS A 105' L x 38' W CONCRETE RECONSTRUCTION.

LOCATION ATH-50-23.88 HAS BEEN ESTIMATED AS A 210' L x 50' W CONCRETE RECONSTRUCTION.

PLAN AND PROFILES AND EXISTING & PROPOSED ELEVATIONS SHALL BE PROVIDED AT THE PRE-CONSTRUCTION MEETING. THE FOLLOWING QUANTITIES HAVE BEEN ESTIMATED FOR ABOVE SAID WORK:

ITEM	ATH-50-21.76	ATH-50-23.88
ITEM 202 - CONCRETE PAVEMENT REMOVED	444 SY	1167 SY
ITEM 304 - AGGREGATE BASE	13 CY	33 CY
ITEM 452 - 10" NON-REINFORCED CONCRETE PAVEMENT, APP	444 SY	1167 SY
ITEM 618 - RUMBLE STRIPS, (CONCRETE)	210 FEET	420 FEET
ITEM 621 - RAISED PAVEMENT MARKER REMOVED	2 EACH	4 EACH
ITEM 642 - EDGE LINE, 6"	0.04 MILES	0.08 MILES
ITEM 642 - LANE LINE, 6"	0.02 MILES	0.04 MILES
ITEM 642 - CHANNELIZING LINE, 12"		100 FT
ITEM 659 - SEEDING & MULCHING	233 SY	467 SY
QUANTITIES CARRIED TO GENERAL SUMMARY		

EXISTING PLANS

EXISTING PLANS MAY BE INSPECTED IN THE ODOT DISTRICT 10 OFFICE IN MARIETTA, OH.

- PROJECT (01)0246: MEG-33-0.21 & MEG-33-1.37
- PROJECT (01)0229: MEG-33-13.58 & MEG-33-15.19
- PROJECT (01)0145: MEG-33-26.53
- PROJECT (97)0180: ATH-50-21.76 & ATH-50-23.88

UTILITIES

THERE ARE NO UNDERGROUND UTILITIES SHOWN ON THIS PLAN. THE NATURE OF THE WORK REQUIRED BY THIS PROJECT WILL NOT AFFECT ANY KNOWN UNDERGROUND UTILITIES THAT EXIST UNDER OR ADJACENT TO THE WORK AREA.

SURVEYING PARAMETERS

USE THE FOLLOWING VERTICAL POSITIONING AND HORIZONTAL POSITIONING PARAMETERS FOR ALL SURVEYING:

VERTICAL POSITIONING

ORTHOMETRIC HEIGHT DATUM: NAVD88
GEOID: 09

HORIZONTAL POSITIONING

REFERENCE FRAME: NAD 83(2011)
ELLIPSOID: GRS80
MAP PROJECTION: LAMBERT CONFORMAL CONIC
COORDINATE SYSTEM: OHIO STATE PLANE - SOUTH ZONE
COMBINED SCALE FACTOR: 1.000059007

UNITS ARE IN U.S. SURVEY FEET. USE THE FOLLOWING CONVERSION FACTOR: 1 METER = 3.280833333 U.S. SURVEY FEET.

ITEM 452 - 10" NON-REINFORCED CONCRETE PAVEMENT, AS PER PLAN

THE CONCRETE PAVEMENT SHALL CONFORM TO C.M.S. 499.05.B, CLASS MS, MODERATE-SETTING PORTLAND CEMENT CONCRETE.

ITEMS 448 & 617

A QUANTITY OF ASPHALT AND AGGREGATE HAVE BEEN PROVIDED TO BE USED AS DIRECTED BY THE ENGINEER TO REMOVE ANY EDGE OF SHOULDER DROP OFF AFTER THE CONCRETE PAVEMENT HAS BEEN RECONSTRUCTED TO GRADE.

ITEM 448 - ASPHALT CONCRETE INTERMEDIATE COURSE, TYPE 1, PG64-22 (UNDER GUARDRAIL) = 10 CY

ITEM 617 - COMPACTED AGGREGATE = 20 CY

ESTIMATED QUANTITIES CARRIED TO THE GENERAL SUMMARY

ITEM 614 - MAINTAINING TRAFFIC, AS PER PLAN

LENGTH AND DURATION OF LANE CLOSURES AND RESTRICTIONS SHALL BE AT THE APPROVAL OF THE ENGINEER. IT IS THE INTENT TO MINIMIZE THE IMPACT TO THE TRAVELING PUBLIC. LANE CLOSURES OR RESTRICTIONS OVER SEGMENTS OF THE PROJECT IN WHICH NO WORK IS ANTICIPATED WITHIN A REASONABLE TIME FRAME, AS DETERMINED BY THE ENGINEER, SHALL NOT BE PERMITTED. THE LEVEL OF UTILIZATION OF MAINTENANCE OF TRAFFIC DEVICES SHALL BE COMMENSURATE WITH THE WORK IN PROGRESS.

LOCATION MEG-33-13.58 & ATH-50: 21.76, 23.88: MAINTAIN TRAFFIC WITH PORTABLE CONCRETE BARRIER AS PER STANDARD DRAWING MT-95.40.

LOCATIONS MEG-33: 0.21, 1.37, 15.19, 26.53: MAINTAIN TRAFFIC WITH PORTABLE CONCRETE BARRIER AS PER STANDARD DRAWING MT-96.11 USING A WORK AREA LENGTH OF 229 FEET. BASED ON THIS WORK AREA LENGTH, THE SIGNAL TIMING IS SHOWN BELOW.

LIGHTING SHALL BE PROVIDED AT EACH END OF THE LANE CLOSURE FOR THE CLOSING OF ONE LANE OF A TWO-LANE HIGHWAY.

LIGHTING SHALL BE BY CONVENTIONAL METHODS, WITH LUMINAIRE ARMS ATTACHED TO THE SIGNAL SUPPORTS. AREA ILLUMINATION SHALL BE PROVIDED BY USING 150 WATT MINIMUM HIGH PRESSURE SODIUM LUMINARIES OR 250 WATT MINIMUM MERCURY LUMINARIES. THE MINIMUM HEIGHT OF THE LUMINAIRE SHALL BE 27 FT FROM THE GROUND SURFACE.

PAYMENT FOR LIGHTING SHALL INCLUDE DELIVERY, ERECTION, MAINTENANCE AND REMOVAL AND SHALL BE INCLUDED IN THE LUMP SUM CONTRACT PRICE FOR ITEM 614, MAINTAINING TRAFFIC, AS PER PLAN.

ALL WORK AND TRAFFIC CONTROL DEVICES SHALL BE IN ACCORDANCE WITH CMS 614 AND OTHER APPLICABLE PORTIONS OF THE SPECIFICATIONS, AS WELL AS THE OHIO MANUAL OF UNIFORM TRAFFIC CONTROL DEVICES. PAYMENT FOR ALL LABOR, EQUIPMENT AND MATERIALS SHALL BE INCLUDED IN THE LUMP SUM CONTRACT PRICE FOR ITEM 614, MAINTAINING TRAFFIC, AS PER PLAN.

INTERVAL	Ø ₁			Ø ₂		
	1	2	3	4	5	6
GREEN	20			20		
YELLOW CHANGE		3			3	
ALL RED CLEARANCE			15			15
CYCLE LENGTH	76					

ITEM 614 - MAINTAINING TRAFFIC, AS PER PLAN CONTINUED

NO WORK SHALL BE PERFORMED AND ALL EXISTING LANES SHALL BE OPEN TO TRAFFIC DURING THE FOLLOWING DESIGNATED HOLIDAYS OR EVENTS:

MEMORIAL DAY & FOURTH OF JULY

THE PERIOD OF TIME THAT THE LANES ARE TO BE OPEN DEPENDS ON THE DAY OF THE WEEK ON WHICH THE HOLIDAY OR EVENT FALLS. THE FOLLOWING SCHEDULE SHALL BE USED TO DETERMINE THIS PERIOD:

DAY OF HOLIDAY OR EVENT	TIME ALL LANES MUST BE OPEN TO TRAFFIC
MONDAY	12:00N FRIDAY THROUGH 6:00 AM TUESDAY
THURSDAY	12:00N WEDNESDAY THROUGH 6:00 AM FRIDAY

CALCULATED
CHECKED

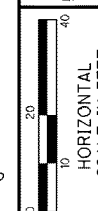
GENERAL NOTES

MEG-33-0.21 & VARIOUS

I:\project\Pavement Plans_2013\MEG-87363\TITLE_SHEET.dgn 18-OCT-2012 3:05PM jboohar

SHEET NUMBER						PARTICIPATION		ITEM	ITEM EXT.	GRAND TOTAL	UNIT	DESCRIPTION	SEE SHEET NO.
5	7	8	9	10	11								
												<i>ROADWAY</i>	
1611	1022	659	373	879	1120			202	23000	5,664	SY	PAVEMENT REMOVED	
					660			202	23500	660	SY	WEARING COURSE REMOVED	
												<i>EROSION CONTROL</i>	
700	465	300	221	400	509			659	10000	2,595	SY	SEEDING AND MULCHING	
												<i>PAVEMENT</i>	
46	29	37	12	49	63			304	20000	236	CY	AGGREGATE BASE	
10								448	46060	10	CY	ASPHALT CONCRETE INTERMEDIATE COURSE, TYPE 1, PG64-22 (UNDER GUARDRAIL)	
1611	1022	659	373	879	1120			452	14001	5,664	SY	10" NON-REINFORCED CONCRETE PAVEMENT, AS PER PLAN	5
20								617	10100	20	CY	COMPACTED AGGREGATE	
630	418	270	199	360	458			618	40200	2,335	FT	RUMBLE STRIPS, (CONCRETE)	
												<i>TRAFFIC CONTROL</i>	
6	2	2	1	2	3			621	54000	16	EACH	RAISED PAVEMENT MARKER REMOVED	
	0.08	0.06		0.07	0.09			642	00090	0.30	MILE	EDGE LINE, 4"	
0.12			0.04					642	00094	0.16	MILE	EDGE LINE, 6"	
0.06			0.02					642	00194	0.08	MILE	LANE LINE, 6"	
	0.04	0.03		0.04	0.05			642	00290	0.16	MILE	CENTER LINE	
100								642	00394	100	FT	CHANNELIZING LINE, 12"	
								614	11001	LUMP		MAINTAINING TRAFFIC, AS PER PLAN	5
								623	10000	LUMP		CONSTRUCTION LAYOUT STAKES	
								624	10000	LUMP		MOBILIZATION	

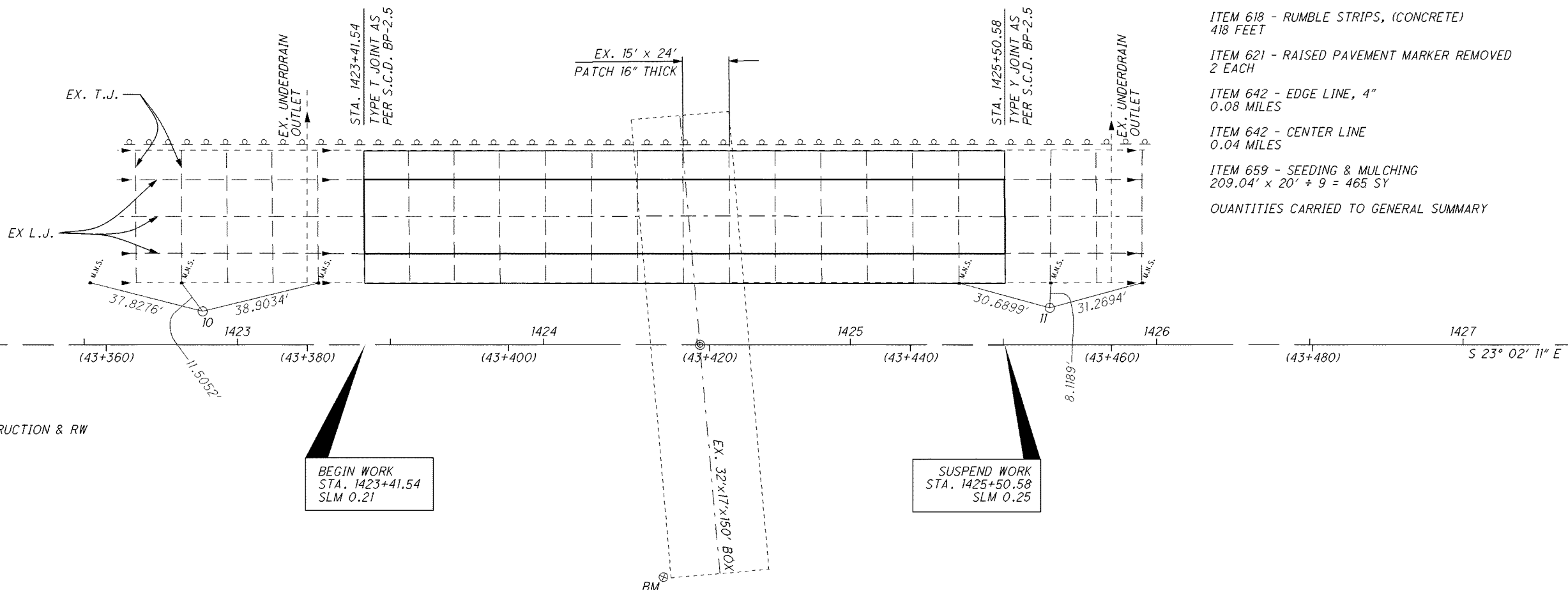
GENERAL SUMMARY
 CALCULATED JDB CHECKED
MEG-33-0.21 & VARIOUS
 6
 12



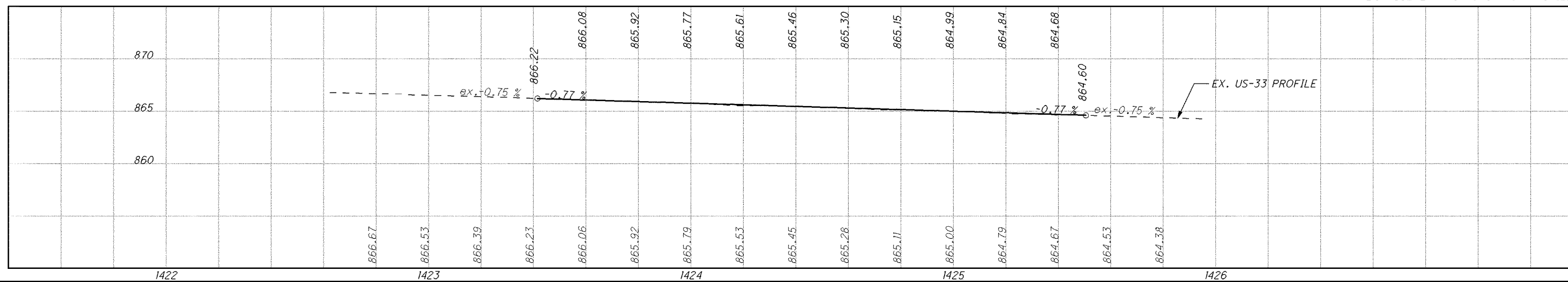
CALCULATED
JOB
CHECKED

POINT	NORTHING	EASTING	ELEV.	STA.	OFFSET	NOTE
10	433618.1630	2095434.2220	865.506	1422+88.76	-10.912	3/4" PIN W/PUNCH
11	433364.2340	2095543.4620	863.653	1425+65.19	-12.074	3/4" PIN W/PUNCH
BM 1	433445.8556	2095413.2784	864.308			X ON N CORNER OF WINGWALL

- CALCULATIONS:
- ITEM 202 - CONCRETE PAVEMENT REMOVED
209.04' x 44' ÷ 9 = 1022 SY
 - ITEM 304 - AGGREGATE BASE
209.04' x 1 1/2" x 44' ÷ 27 = 29 CY
 - ITEM 452 - 10" NON-REINFORCED CONCRETE PAVEMENT, APP
209.04' x 44' ÷ 9 = 1022 SY
 - ITEM 618 - RUMBLE STRIPS, (CONCRETE)
418 FEET
 - ITEM 621 - RAISED PAVEMENT MARKER REMOVED
2 EACH
 - ITEM 642 - EDGE LINE, 4"
0.08 MILES
 - ITEM 642 - CENTER LINE
0.04 MILES
 - ITEM 659 - SEEDING & MULCHING
209.04' x 20' ÷ 9 = 465 SY
- QUANTITIES CARRIED TO GENERAL SUMMARY



BOX CULVERT NOT SHOWN IN PROFILE



PLAN AND PROFILE
SLM 0.21 TO SLM 0.25

MEG-33-0.21
& VARIOUS

NAD 83(2011)
OHIO STATE PLANE-SOUTH ZONE-GRID
NAVD88 GEOID09

(METRIC STATIONING)
L.J. = LONGITUDINAL JOINT
T.J. = TRANSVERSE JOINT

POINT	NORTHING	EASTING	ELEV.	STA.	OFFSET	NOTE
9	427786.0059	2097901.7146	764.587	1486+22.07	0.00	℄ REF MONUMENT
10	428028.1640	2097811.4270	774.045	1483+63.87	-11.648	3/4" IPIN
12	426567.3590	2098419.7748				℄ REF MONUMENT

CALCULATIONS:

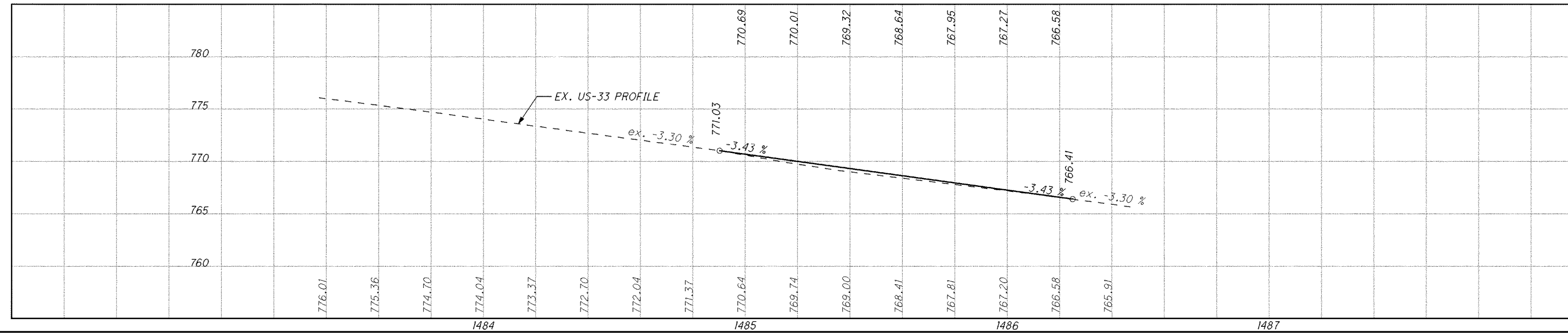
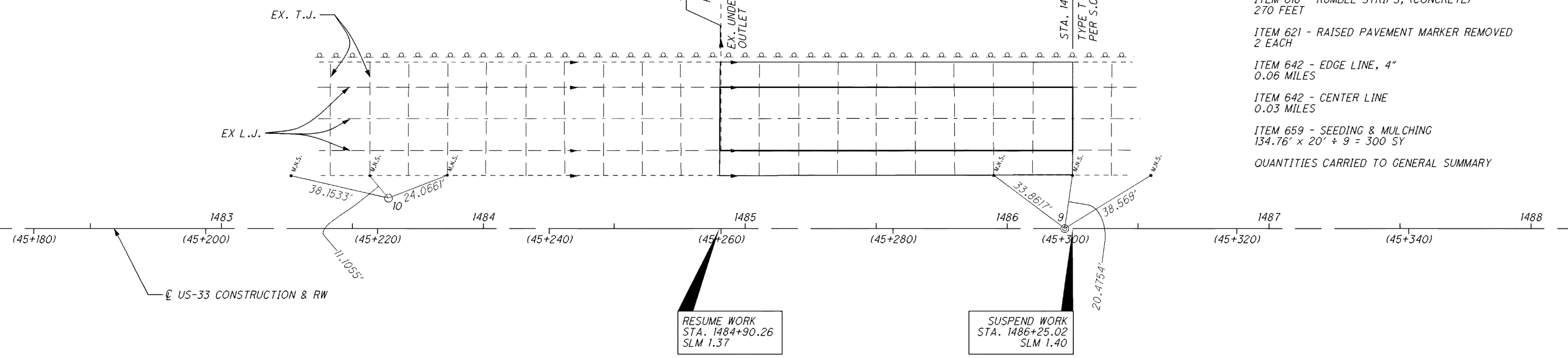
- ITEM 202 - CONCRETE PAVEMENT REMOVED
134.76' x 44' ± 9 = 659 SY
 - ITEM 304 - AGGREGATE BASE
134.76' x 2"/12 x 44' ± 27 = 37 CY
 - ITEM 452 - 10" NON-REINFORCED CONCRETE PAVEMENT, APP
134.76' x 44' ± 9 = 659 SY
 - ITEM 618 - RUMBLE STRIPS, (CONCRETE)
270 FEET
 - ITEM 621 - RAISED PAVEMENT MARKER REMOVED
2 EACH
 - ITEM 642 - EDGE LINE, 4"
0.06 MILES
 - ITEM 642 - CENTER LINE
0.03 MILES
 - ITEM 659 - SEEDING & MULCHING
134.76' x 20' ± 9 = 300 SY
- QUANTITIES CARRIED TO GENERAL SUMMARY



CALCULATED
JDB
CHECKED

PLAN AND PROFILE
SLM 1.37 TO SLM 1.40

MEG-33-0.21
& VARIOUS

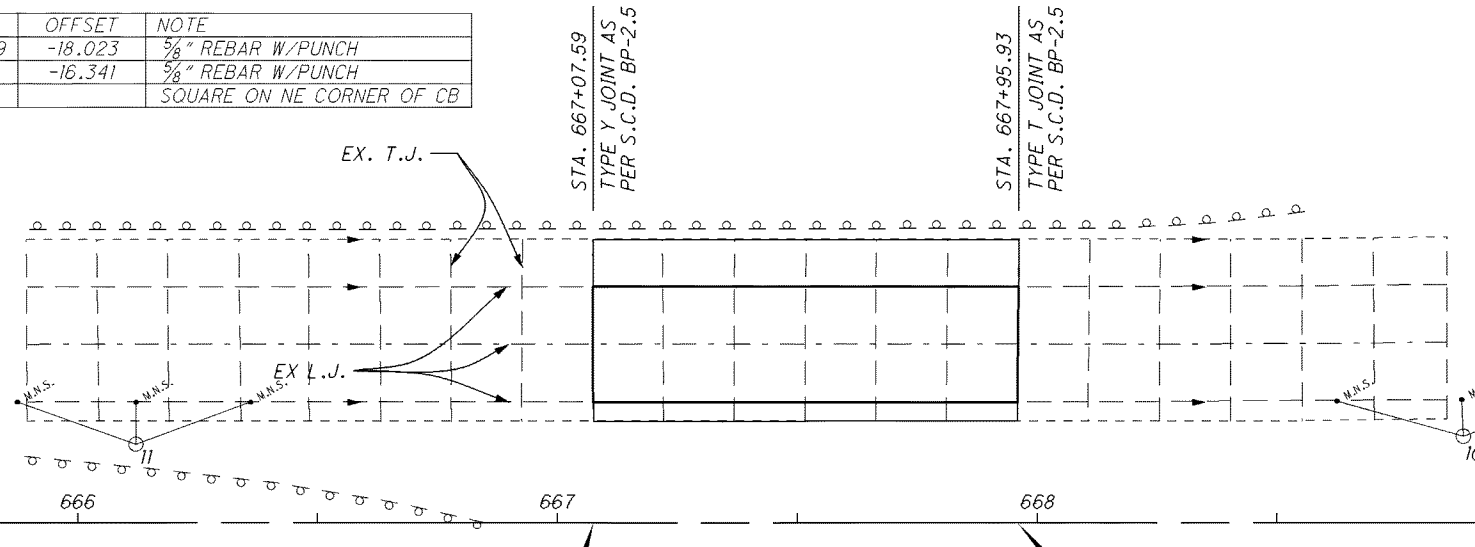


I:\project\Pavement Plans_2013\10_Raising_Conc-B7363\Meg-33-1.35\87363BP002.dgn 12-OCT-2012 8:28AM jboohar

NAD 83(2011)
OHIO STATE PLANE, SOUTH ZONE, GRID
NAVD88, GEOID09

POINT	NORTHING	EASTING	ELEV.	STA.	OFFSET	NOTE
10	383678.2740	2118362.6250	768.1820	668+88.89	-18.023	5/8" REBAR W/PUNCH
11	383819.0570	2118124.4360	770.293	666+12.21	-16.341	5/8" REBAR W/PUNCH
BM 1	383727.0167	2118232.0804	766.997			SQUARE ON NE CORNER OF CB

L.J. = LONGITUDINAL JOINT
T.J. = TRANSVERSE JOINT



CALCULATIONS:

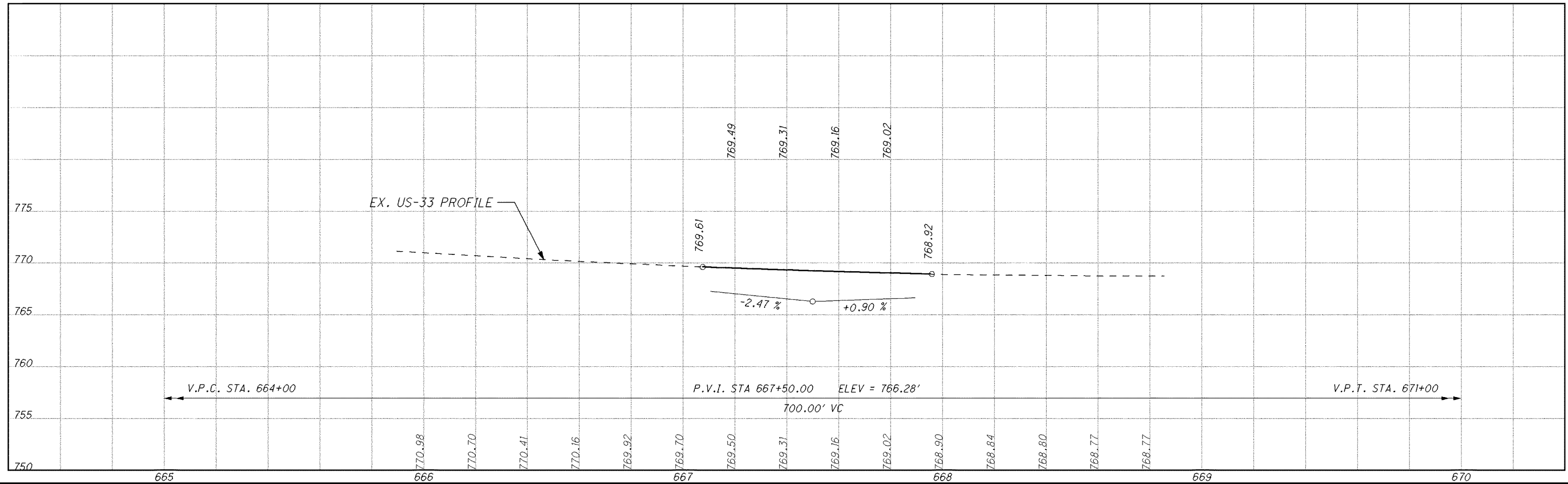
- ITEM 202 - CONCRETE PAVEMENT REMOVED
99.34' x 38' ± 9 = 373 SY
 - ITEM 304 - AGGREGATE BASE
99.34' x 1 1/2' x 38' ± 27 = 12 CY
 - ITEM 452 - 10" NON-REINFORCED CONCRETE PAVEMENT, APP
99.34' x 38' ± 9 = 373 SY
 - ITEM 618 - RUMBLE STRIPS, (CONCRETE)
199 FEET
 - ITEM 621 - RAISED PAVEMENT MARKER REMOVED
1 EACH
 - ITEM 642 - EDGE LINE, 6"
0.04 MILES
 - ITEM 642 - LANE LINE, 6"
0.02 MILES
 - ITEM 659 - SEEDING & MULCHING
99.34' x 20' ± 9 = 221 SY
- QUANTITIES CARRIED TO GENERAL SUMMARY

CALCULATED
JOB
CHECKED

HORIZONTAL SCALE IN FEET

RESUME WORK
STA. 667+07.59
SLM 13.58

SUSPEND WORK
STA. 667+95.93
SLM 13.60



PLAN AND PROFILE
SLM 13.58 TO SLM 13.60

MEG-33-0.21
& VARIOUS

I:\project\Pavement Plans_2013\D10_Raising Conc-87363\Meg-33-13.6\87363BP003.dgn 12-OCT-2012 8:29AM jbooner

NAD 83(2011)
OHIO STATE PLANE, SOUTH ZONE, GRID
NAVD88, GEOID09

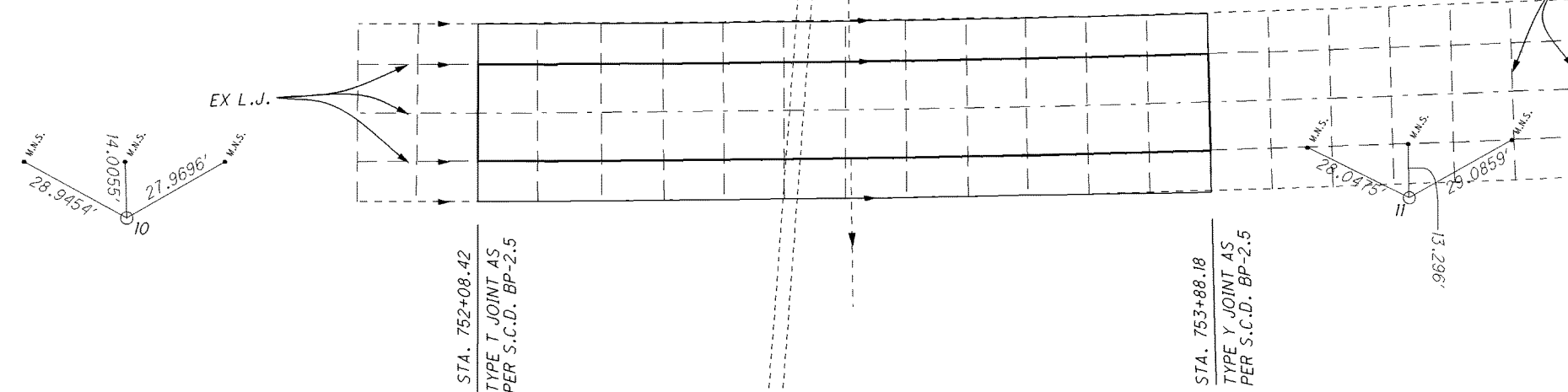
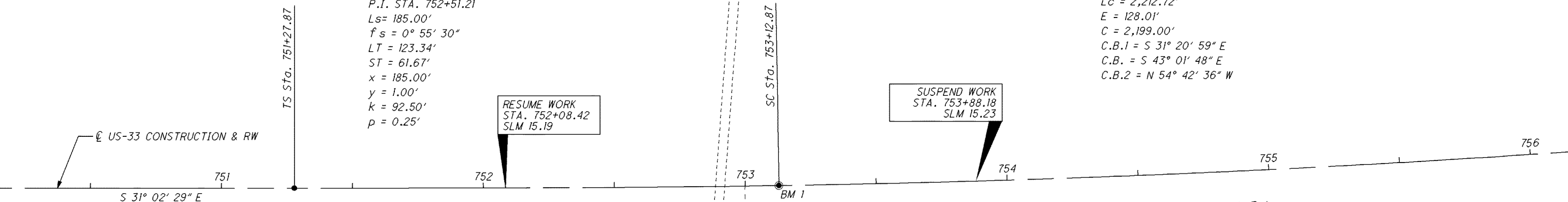
POINT	NORTHING	EASTING	ELEV.	STA.	OFFSET	NOTE
10	378228.0490	2124268.9370	796.981	751+21.72	67.957	5/8" IRON PIN W/PUNCH
11	377958.9560	2124436.7370	793.395	754+36.32	67.311	5/8" IRON PIN W/PUNCH
BM 1	378099.8275	2124426.5827	792.348	753+12.87	0.00	REFERENCE MONUMENT

P.I. Sta. 764+37.09
 $\Delta = 23^\circ 58' 38''$ (LT)
 $Dc = 1^\circ 00' 00''$
 $R = 5,729.58'$
 θ
 $\Delta c = 22^\circ 07' 38''$ (LT)
 $Lc = 2,212.72'$
 $E = 128.01'$
 $C = 2,199.00'$
 $C.B.1 = S 31^\circ 20' 59'' E$
 $C.B. = S 43^\circ 01' 48'' E$
 $C.B.2 = N 54^\circ 42' 36'' W$

P.I. STA. 752+51.21
 $Ls = 185.00'$
 $f_s = 0^\circ 55' 30''$
 $LT = 123.34'$
 $ST = 61.67'$
 $x = 185.00'$
 $y = 1.00'$
 $k = 92.50'$
 $p = 0.25'$

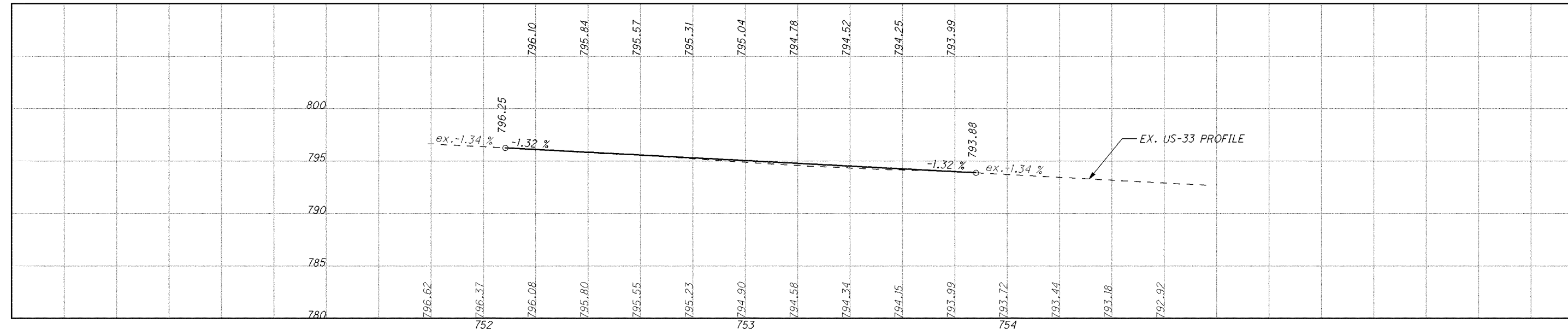
RESUME WORK
 STA. 752+08.42
 SLM 15.19

SUSPEND WORK
 STA. 753+88.18
 SLM 15.23



- CALCULATIONS:
- ITEM 202 - CONCRETE PAVEMENT REMOVED
 $179.76' \times 44' \div 9 = 879$ SY
 - ITEM 304 - AGGREGATE BASE
 $179.76' \times 2''/12 \times 44' \div 27 = 49$ CY
 - ITEM 452 - 10" NON-REINFORCED CONCRETE PAVEMENT, APP
 $179.76' \times 44' \div 9 = 879$ SY
 - ITEM 618 - RUMBLE STRIPS, (CONCRETE)
 360 FEET
 - ITEM 621 - RAISED PAVEMENT MARKER REMOVED
 2 EACH
 - ITEM 642 - EDGE LINE, 4"
 0.07 MILES
 - ITEM 642 - CENTER LINE
 0.04 MILES
 - ITEM 659 - SEEDING & MULCHING
 $179.76' \times 20' \div 9 = 400$ SY
- QUANTITIES CARRIED TO GENERAL SUMMARY

L.J. = LONGITUDINAL JOINT
 T.J. = TRANSVERSE JOINT
 SEE SHEET 12 FOR SUPERELEVATION TABLE.



HORIZONTAL SCALE IN FEET

CALCULATED	JDB
	CHECKED

PLAN AND PROFILE
SLM 15.19 TO SLM 15.23

MEG-33-0.21
& VARIOUS

10
12

I:\project\pavement Plans_2013\10 Raising Conc-87363 Meg-33-15.23\87363BP004.dgn 12-OCT-2012 8:36AM jboother

I:\project\Pavement Plans_2013\D10_Raising_Conc-87363\Meg-33-26.58\87363BP005.dgn 12-OCT-2012 8:36AM jbooner

NAD 83(2011)
OHIO STATE PLANE, SOUTH ZONE, GRID
NAVD88, GEOID09

POINT	NORTHING	EASTING	ELEV.	STA.	OFFSET	NOTE
10	344931.7720	2169207.0080	638.496	1353+97.41	16.839	5/8" REBAR W/PUNCH
11	345306.2840	2168944.8830	634.889	1349+40.28	15.962	5/8" REBAR W/PUNCH
BM 1	345348.6859	2168933.0257	633.621			REFERENCE MONUMENT

POT Sta. 1350+00.00

POT Sta. 1355+00.03

BM 1

CALCULATED
JDB
CHECKED

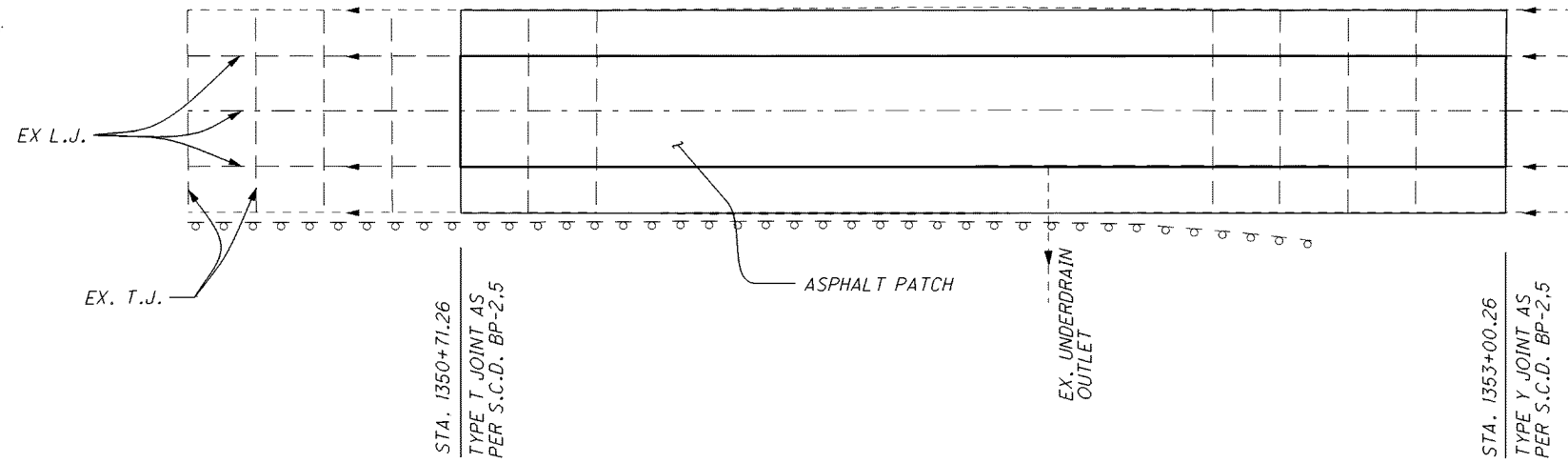
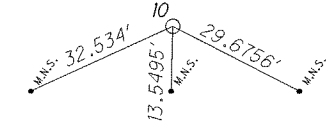
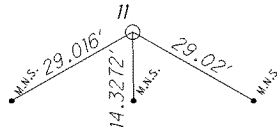
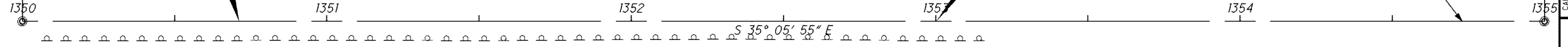


0 10 20 40
HORIZONTAL
SCALE IN FEET

RESUME WORK
STA. 1350+71.26
SLM 26.53

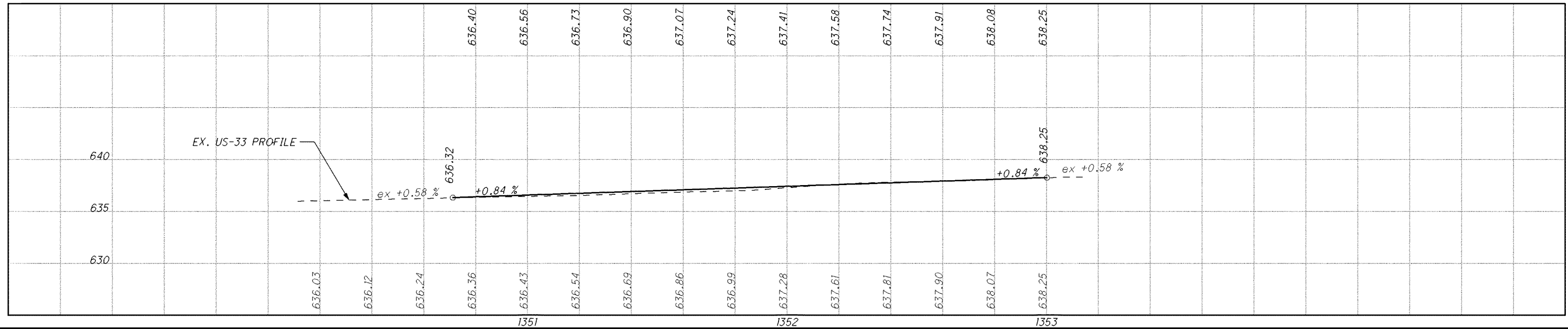
END WORK
STA. 1353+00.26
SLM 26.57

US-33 CONSTRUCTION & RW



- CALCULATIONS:**
- ITEM 202 - WEARING COURSE REMOVED
135' x 44' ÷ 9 = 660 SY (156 tons asphalt)
 - ITEM 202 - CONCRETE PAVEMENT REMOVED
229.00' x 44' ÷ 9 = 1120 SY
 - ITEM 304 - AGGREGATE BASE
229.00' x 2"/12 x 44' ÷ 27 = 63 CY
 - ITEM 452 - 10" NON-REINFORCED CONCRETE PAVEMENT, APP
229.00' x 44' ÷ 9 = 1120 SY
 - ITEM 618 - RUMBLE STRIPS, (CONCRETE)
458 FEET
 - ITEM 621 - RAISED PAVEMENT MARKER REMOVED
3 EACH
 - ITEM 642 - EDGE LINE, 4"
0.09 MILES
 - ITEM 642 - CENTER LINE
0.05 MILES
 - ITEM 659 - SEEDING & MULCHING
229' x 20' ÷ 9 = 509 SY
- QUANTITIES CARRIED TO GENERAL SUMMARY

L.J. = LONGITUDINAL JOINT
T.J. = TRANSVERSE JOINT



**PLAN AND PROFILE
SLM 26.53 TO SLM 26.57**

**MEG-33-0.21
& VARIOUS**

SUPERELEVATION TABLE

P.I. STA. 764+37.08

Dc = 1° 00' 00"

CALCULATED
JDB
CHECKED
ALC

REMARKS	OUTSIDE EDGE -					CENTERLINE OF LANES					INSIDE EDGE (PROFILE GRADE)		STATION	INSIDE EDGE (PROFILE GRADE)					CENTERLINE OF LANES					OUTSIDE EDGE					REMARKS
	ELEVATION	ELEVATION CORRECTION	CROSS SLOPE	TRANSITION RATE	WIDTH	ELEVATION	ELEVATION CORRECTION	CROSS SLOPE	TRANSITION RATE	WIDTH	ELEVATION	OFFSET		OFFSET	ELEVATION	WIDTH	TRANSITION RATE	CROSS SLOPE	ELEVATION CORRECTION	ELEVATION	WIDTH	TRANSITION RATE	CROSS SLOPE	ELEVATION CORRECTION	ELEVATION				
												752+08.42	30	796.25	12		0.0158	0.190	796.44	12		-0.0225	-0.270	796.17	MEET EXISTING				
												752+20	30	796.10	12		0.0156	0.187	796.29	12	24:1	-0.0185	-0.222	796.07					
												752+40	30	795.84	12		0.0156	0.187	796.03	12	24:1	-0.0116	-0.139	795.89					
												752+60	30	795.57	12		0.0156	0.187	795.76	12	24:1	-0.0047	-0.056	795.70					
												752+80	30	795.31	12		0.0156	0.187	795.50	12	24:1	0.0023	0.027	795.52					
												753+00	30	795.04	12		0.0156	0.187	795.23	12	24:1	0.0092	0.110	795.34					
												753+18.55	30	794.78	12		0.0156	0.187	794.97	12	24:1	0.0156	0.187	795.15	CR				
												753+20	30	794.52	12	24:1	0.0161	0.193	794.71	12	24:1	0.0161	0.193	794.91					
												753+40	30	794.25	12	24:1	0.0230	0.276	794.53	12	24:1	0.0230	0.276	794.80					
												753+60	30	794.24	12	24:1	0.0299	0.359	794.60	12	24:1	0.0299	0.359	794.96					
												753+80	30	793.99	12	24:1	0.0345	0.414	794.40	12	24:1	0.0345	0.414	794.82					
												753+88.18	30	793.88	12		0.0342	0.41	794.29	12		0.0333	0.4	794.69	MEET EXISTING				

**SUPERELEVATION TABLE
STA 752+08.42 TO STA 753+88.18**

**MEG-33-0.21
& VARIOUS**

I:\project\Pavement Plans_2013\010_Raising_Conc-87363\TITLE_SHEET.dgn 12-OCT-2012 8:24AM jboohier