

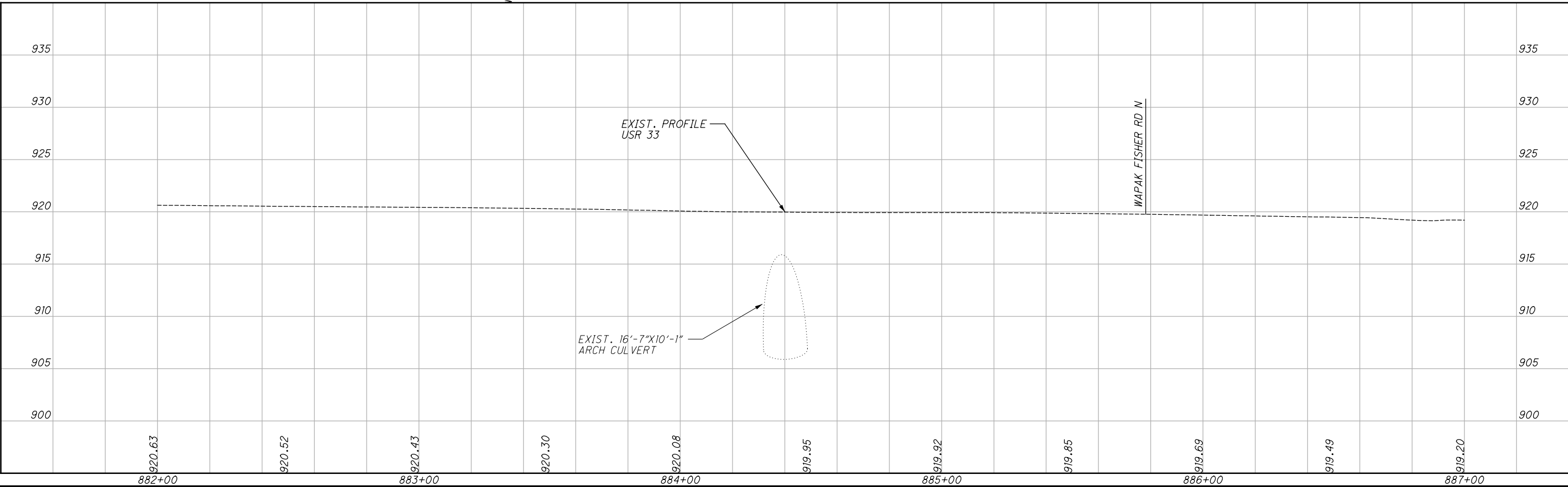
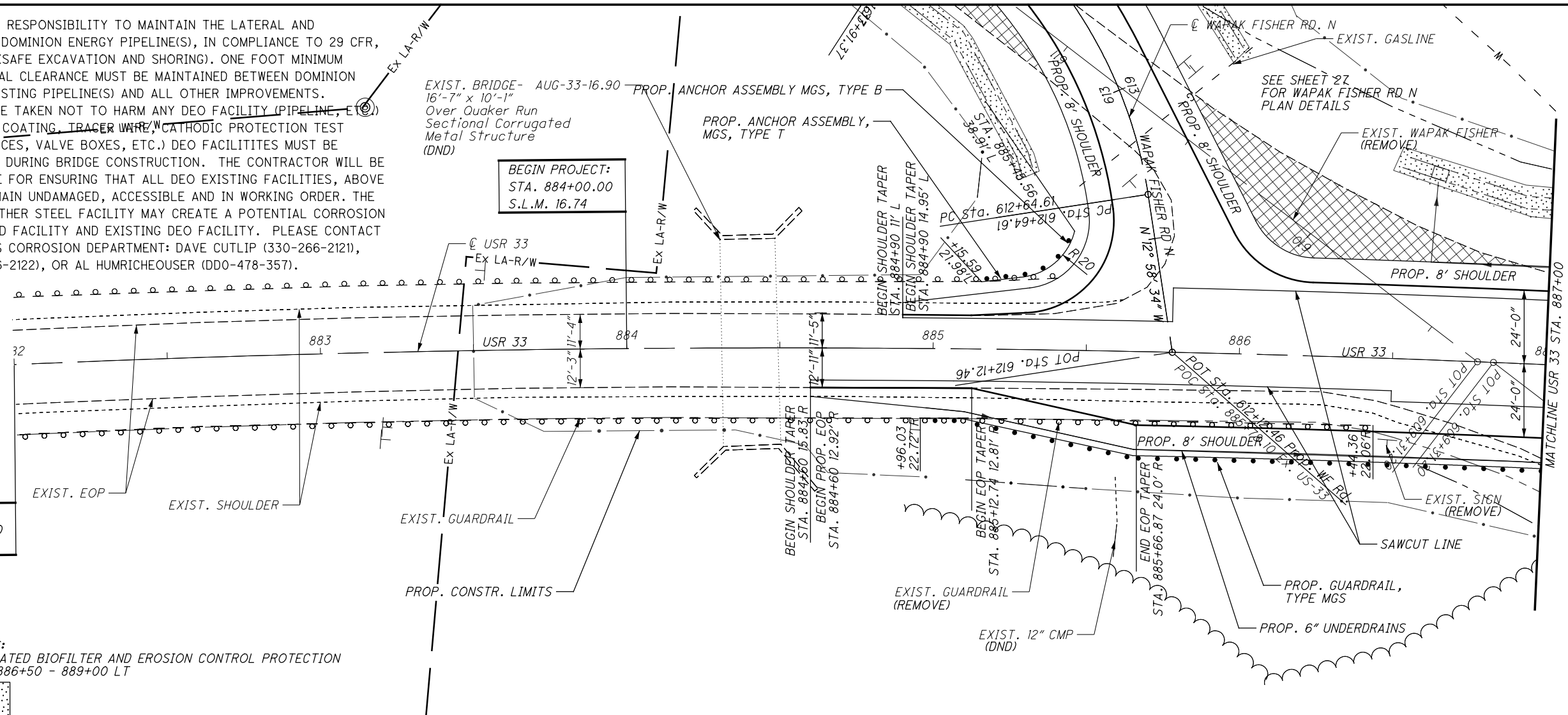
IT IS THE CONTRACTOR'S RESPONSIBILITY TO MAINTAIN THE LATERAL AND SUBJACENT SUPPORT OF DOMINION ENERGY PIPELINE(S), IN COMPLIANCE TO 29 CFR, PART 1926, SUBPART P, (SAFE EXCAVATION AND SHORING). ONE FOOT MINIMUM VERTICAL AND HORIZONTAL CLEARANCE MUST BE MAINTAINED BETWEEN DOMINION ENERGY OHIO'S (DEO) EXISTING PIPELINE(S) AND ALL OTHER IMPROVEMENTS. EXTREME CARE SHOULD BE TAKEN NOT TO HARM ANY DEO FACILITY (PIPELINE, ETC.) OR APPURTENANCE (PIPE COATING, TRACER WIRE, CATHODIC PROTECTION TEST STATION WIRES AND DEVICES, VALVE BOXES, ETC.) DEO FACILITIES MUST BE PROTECTED WITH A TARP DURING BRIDGE CONSTRUCTION. THE CONTRACTOR WILL BE RESPONSIBLE AND LIABLE FOR ENSURING THAT ALL DEO EXISTING FACILITIES, ABOVE AND BELOW GROUND, REMAIN UNDAMAGED, ACCESSIBLE AND IN WORKING ORDER. THE CROSSING OF DEO'S ANOTHER STEEL FACILITY MAY CREATE A POTENTIAL CORROSION ISSUE FOR THE PROPOSED FACILITY AND EXISTING DEO FACILITY. PLEASE CONTACT DOMINION ENERGY OHIO'S CORROSION DEPARTMENT: DAVE CUTLIP (330-266-2121), RICK MCDONALD (330-226-2122), OR AL HUMRICHEUSER (DDO-478-357).

EXIST. BRIDGE- AUG-33-16.90
16'-7" x 10'-1"
Over Quaker Run
Sectional Corrugated
Metal Structure
(DND)

BEGIN PROJECT:
STA. 884+00.00
S.L.M. 16.74

BEGIN WORK:
STA. 882+00.00
S.L.M. 16.68

NOTES:
VEGETATED BIOFILTER AND EROSION CONTROL PROTECTION
STA. 886+50 - 889+00 LT



PLAN AND PROFILE - USR 33
Sta. 882+00 to 887+00

AUG-33-16.72

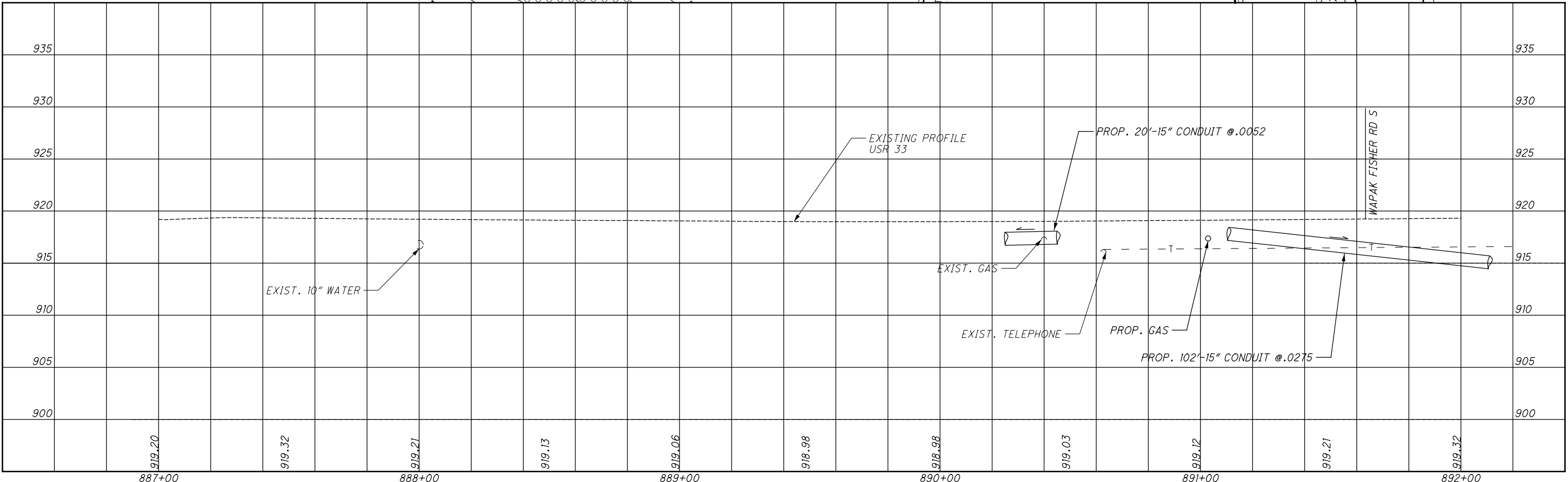
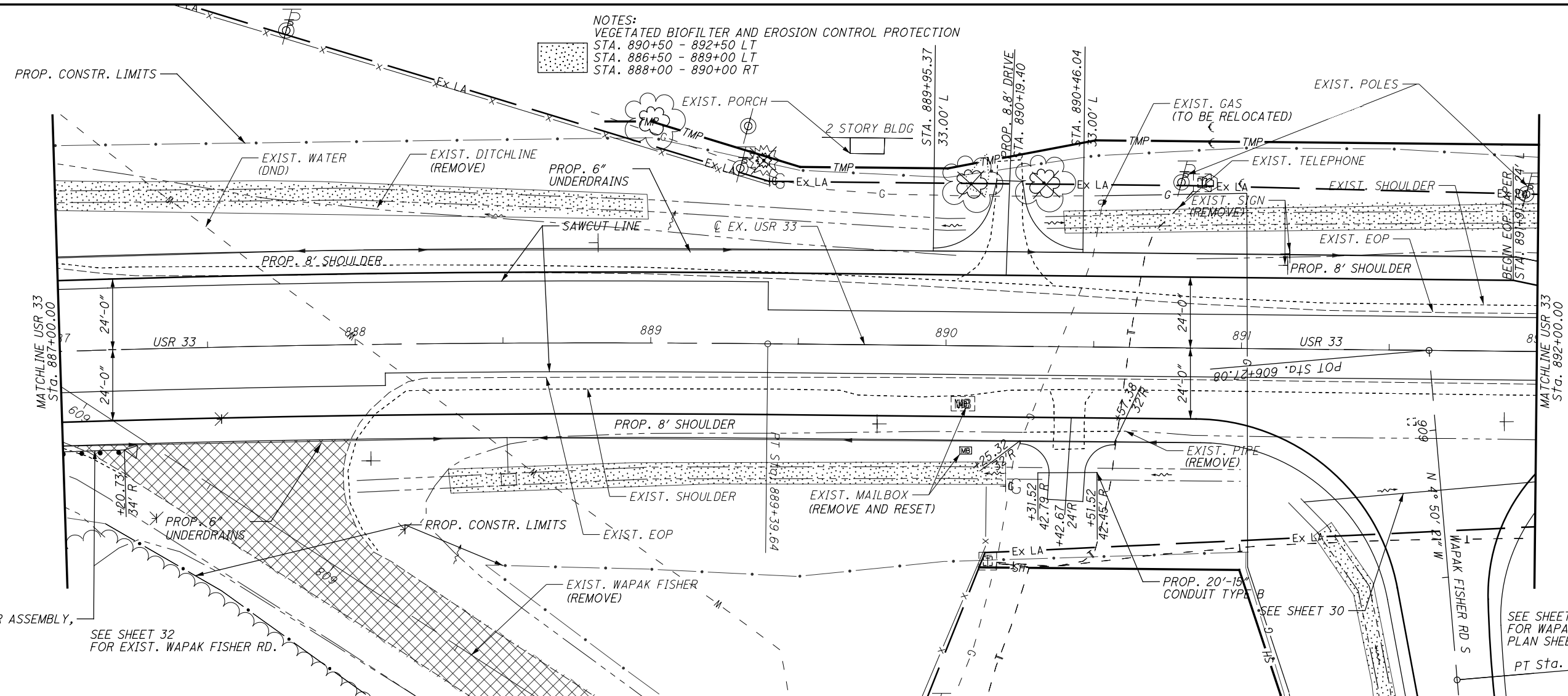
24
86

I:\Project+Data\DOT\AUG\100087_AUG-33-1672\Design\Roadway\Sheets\100087_GP00.dgn Sheet 3/10/2019 12:32:49 PM anenders

NOTES:
 VEGETATED BIOFILTER AND EROSION CONTROL PROTECTION
 STA. 890+50 - 892+50 LT
 STA. 886+50 - 889+00 LT
 STA. 888+00 - 890+00 RT

CALCULATED
 ABH
 CHECKED
 CWV

0 20 40
 HORIZONTAL
 SCALE IN FEET



PLAN AND PROFILE - USR 33
 STA. 887+00 TO 892+00

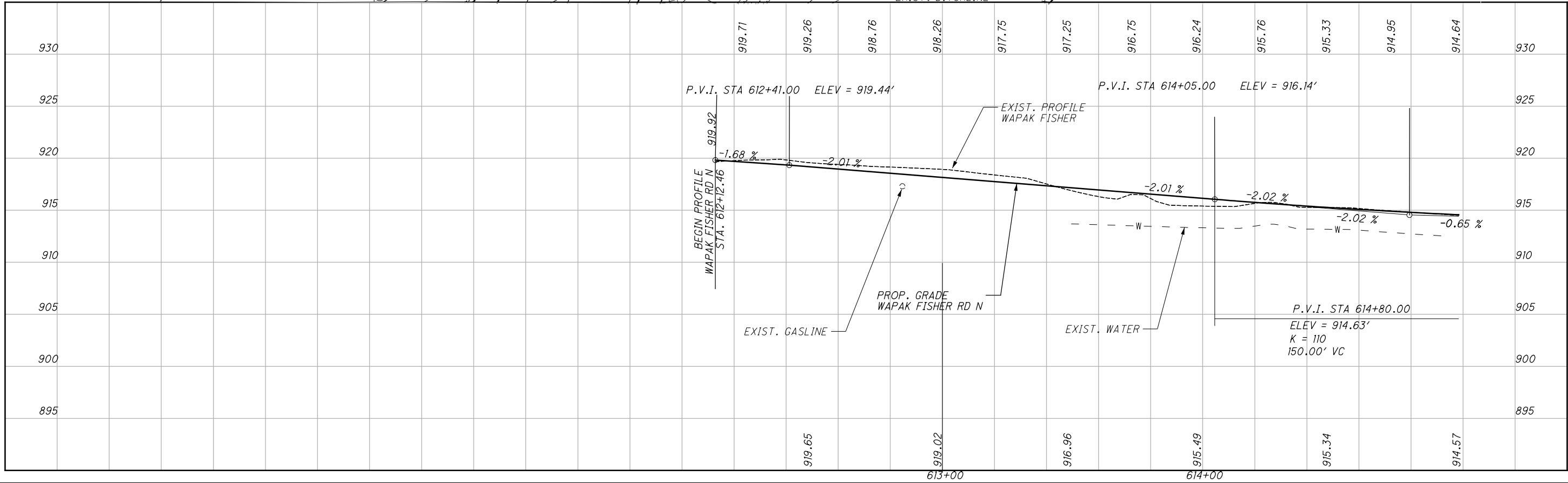
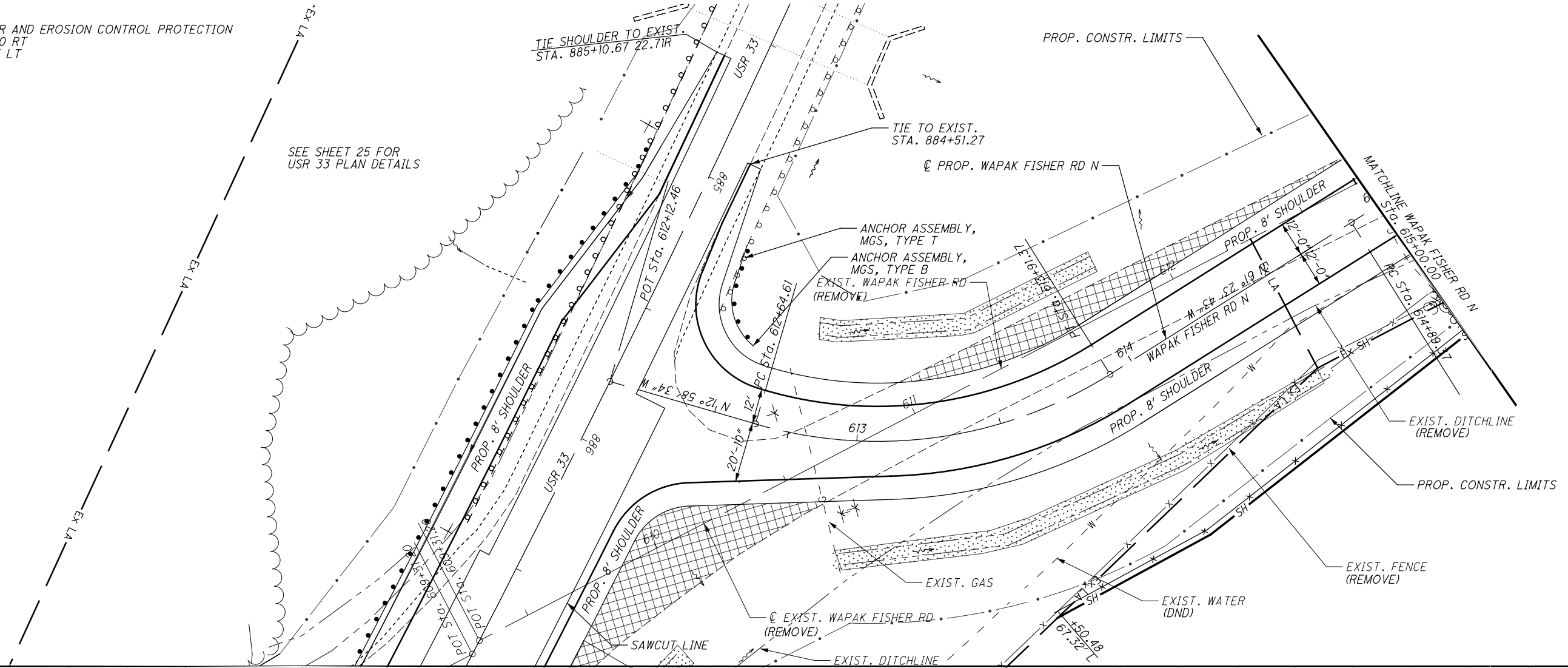
AUG-33-16.72

I:\ProjectData\DOT\AUG\100087_AUG-33-1672\Design\Roadway\Sheets\100087_GP002.dgn Sheet 3/10/2019 12:32:50 PM chenders

NOTES:
 VEGETATED BIOFILTER AND EROSION CONTROL PROTECTION
 STA. 613+00 - 615+00 RT
 STA. 612+61 - 614+05 LT



SEE SHEET 25 FOR
 USR 33 PLAN DETAILS



I:\ProjectData\007\AUG\100087_AUG-33-1672\Design\Roadway\Sheets\100087_GPO10.dgn Sheet 3/10/2019 12:32:55 PM chenders



CALCULATED
 ABH
 CHECKED
 CWV

**PLAN AND PROFILE WAPAK FISHER
 (NORTH) STA. 612+26.46 TO 615+00.00**

AUG-33-16.72