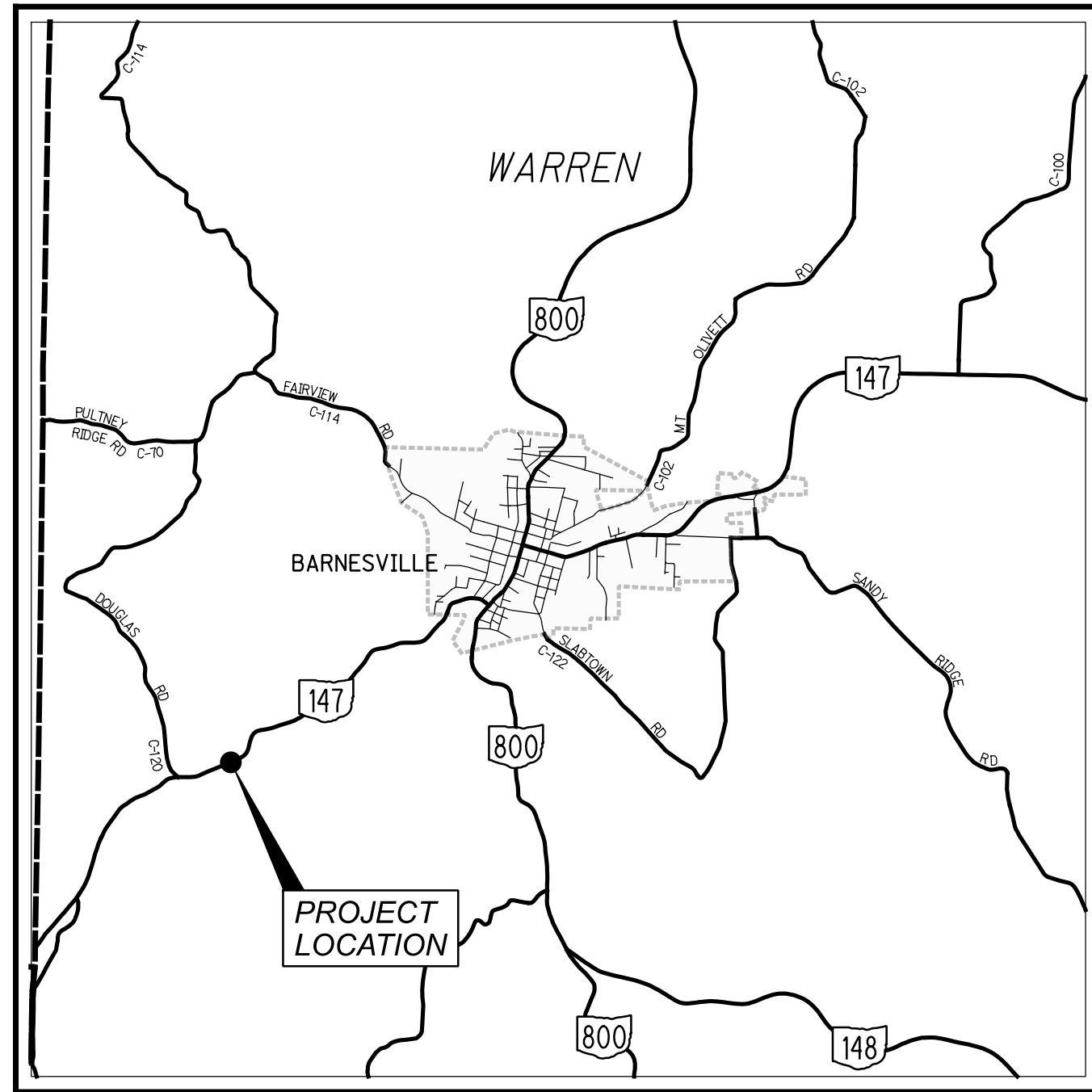


STATE OF OHIO DEPARTMENT OF TRANSPORTATION

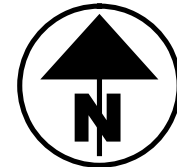
BEL-147-2.84

WARREN TOWNSHIP
BELMONT COUNTY



LOCATION MAP

LATITUDE: 39°58'20" N LONGITUDE: 81°12'15" W



STATE ROUTES -----
COUNTY ROADS -----
OTHER ROADS -----

DESIGN DESIGNATION

CURRENT ADT (2019) ----- 2200
DESIGN YEAR ADT (2044) ----- 2400
DESIGN HOURLY VOLUME (2044) ----- 200
DIRECTIONAL DISTRIBUTION ----- 0.56
TRUCKS (24 HOUR B&C) ----- 5 %
DESIGN SPEED ----- 55 MPH
LEGAL SPEED ----- 55 MPH
DESIGN FUNCTIONAL CLASSIFICATION: MAJOR COLLECTOR (RURAL)
NHS PROJECT ----- NO

DESIGN EXCEPTIONS

DESIGN FEATURE	APPROVAL DATE	SHEET NUMBER
SHOULDER WIDTH	05/02/22	P.03-P.06
STOPPING SIGHT DISTANCE	05/02/22	P.20
SUPERELEVATION RATE	05/02/22	P.02

ADA DESIGN WAIVERS

NONE

UNDERGROUND UTILITIES
Contact Two Working Days
Before You Dig

OHIO811.org
Before You Dig

OHIO811, 8-1-1, or 1-800-362-2764
(Non members must be called directly)

PLAN PREPARED BY:



Newark Office:
88 West Church Street
Newark, OH 43055
(740) 345-1921 (ph)
(740) 345-4994 (fax)
www.adrinnovation.com

INDEX OF SHEETS:

TITLE	P.01
SCHEMATIC PLAN	P.02
TYPICAL SECTIONS	P.03-P.06
GENERAL NOTES	P.07-P.09
MAINTENANCE OF TRAFFIC	P.10-P.17
GENERAL SUMMARY	P.18-P.19
PLAN AND PROFILE	P.20-P.22
ESTIMATED QUANTITIES	P.23
CROSS SECTIONS	P.24-P.37
SUPERELEVATION TABLES	P.38-P.39
DRIVE DETAILS	P.40
STORM SEWER PROFILES	P.41
RETAINING WALL PLANS	P.42-P.51
MISCELLANEOUS DETAILS	P.52
TRAFFIC CONTROL PLAN	P.53-P.54
GEOTECHNICAL PROFILE	P.55-P.68

REVISED SHEETS P.14 AND P.19

ENGINEER'S SEAL:
(ROADWAY)

SIGNED: Jan. 5, 2024

ENGINEER'S SEAL:
(GEOTECHNICAL)

SIGNED: _____

STANDARD CONSTRUCTION DRAWINGS								SUPPLEMENTAL SPECIFICATIONS	SPECIAL PROVISIONS
BP-3.1	1/21/22	MGS-1.1	7/16/21	MT-96.11	7/21/23	TC-41.20	10/18/13	800-2023	7/21/23
BP-4.1	7/19/13	MGS-2.1	1/19/18	MT-96.20	7/21/23	TC-41.30	4/21/23	832	7/15/22
BP-5.1	7/15/22	MGS-4.2	7/19/13	MT-96.26	1/18/19	TC-42.20	10/18/13	902	7/19/19
				MT-97.10	4/19/19	TC-52.10	10/18/13		
CB-3	7/16/21			MT-101.60	4/21/23	TC-52.20	1/15/21		
				MT-101.70	4/21/23	TC-61.30	7/19/19		
DM-1.1	7/17/20			MT-101.75	7/21/23	TC-65.10	1/17/14		
DM-1.2	7/16/21			MT-101.90	7/17/20	TC-65.11	7/15/22		
DM-2.1	1/18/13			MT-105.10	1/17/20				
DM-4.3	1/15/16								
DM-4.4	1/15/16			RM-4.2	4/17/20				
DW-2.2	7/20/18								

FEDERAL PROJECT NUMBER

E210 (163)

RAILROAD INVOLVEMENT

NONE

PROJECT DESCRIPTION

IMPROVEMENT OF 0.22 MILES (1152') OF S.R. 147 IN BELMONT COUNTY WITH THE CONSTRUCTION OF A NEW 740' DRILLED SHAFT SOLDIER PILE RETAINING WALL, INCLUDING REMOVAL AND REPLACEMENT OF PAVEMENT, GUARDRAIL, AND THREE CULVERTS.

EARTH DISTURBED AREAS

PROJECT EARTH DISTURBED AREA: 1.5 ACRES
ESTIMATED CONTRACTOR EARTH DISTURBED AREA: 0.25 ACRES
NOTICE OF INTENT EARTH DISTURBED AREA: NOT REQUIRED
(ROUTINE MAINTENANCE PROJECT)

2023 SPECIFICATIONS

THE STANDARD SPECIFICATIONS OF THE STATE OF OHIO, DEPARTMENT OF TRANSPORTATION, INCLUDING SUPPLEMENTAL SPECIFICATIONS LISTED IN THE PLANS AND CHANGES LISTED IN THE PROPOSAL SHALL GOVERN THIS IMPROVEMENT.

I HEREBY APPROVE THESE PLANS AND DECLARE THAT THE MAKING OF THIS IMPROVEMENT WILL NOT REQUIRE THE CLOSING TO TRAFFIC OF THE HIGHWAY AND THAT PROVISIONS FOR THE MAINTENANCE AND SAFETY OF TRAFFIC WILL BE AS SET FORTH ON THE PLANS AND ESTIMATES.

APPROVED
DISTRICT DEPUTY DIRECTOR

APPROVED
DIRECTOR, DEPARTMENT OF TRANSPORTATION

TITLE

DESIGN AGENCY


88 West Church Street
Newark, OH 43055
(740) 345-1921 (ph)
www.adrinnovation.com

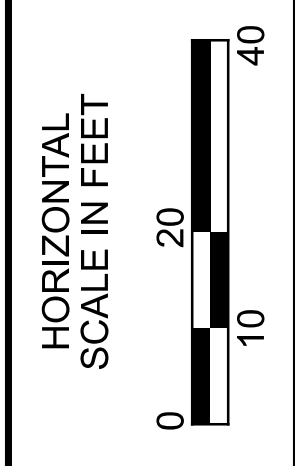
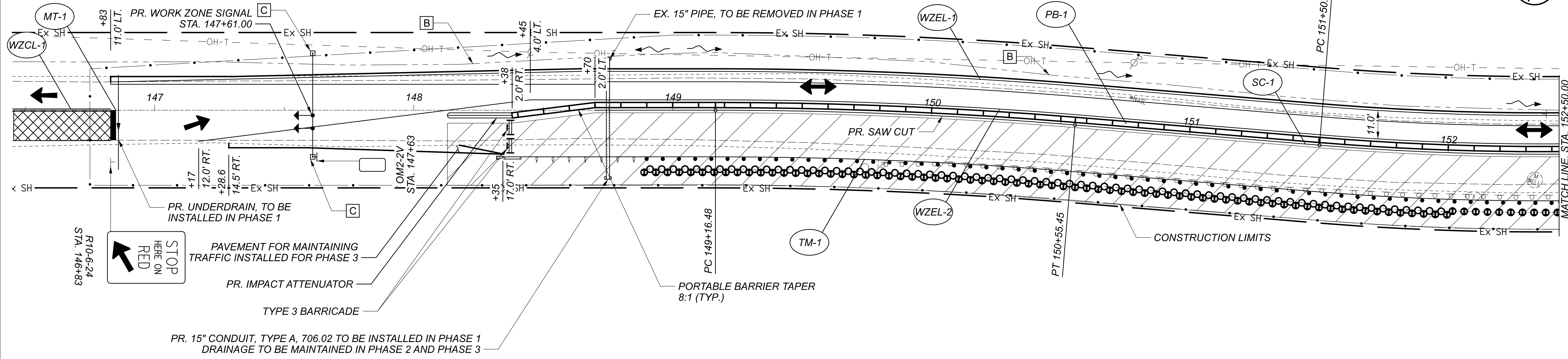
DESIGNER	JXB
REVIEWER	RSB
PROJECT ID	9-14-23
SHEET	114188
TOTAL	68

BEL-147-2.84

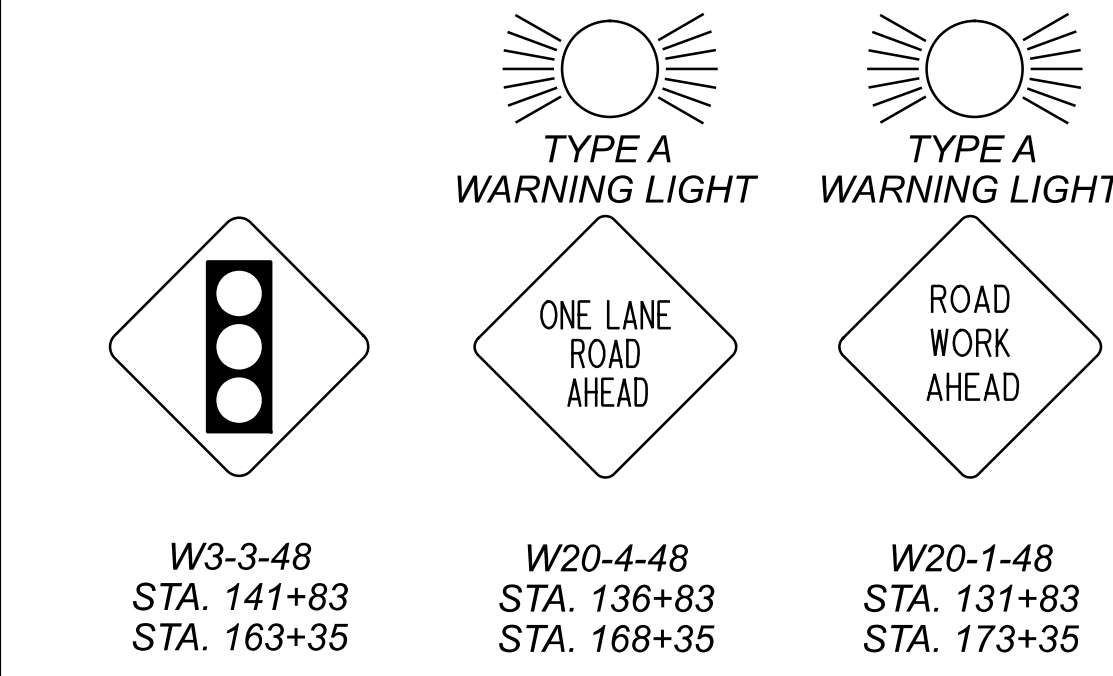
MODEL: Sheet PAPER: SIZE: 34x22 (in.) DATE: 1/5/2024 TIME: 8:40:25 AM USER: JBobak P:\ADR\2024\12-081 ODOT BEL-147-0289 & BEL-379-0226\114188\000-Admin\Plan\Reviews\Final\Submission\BEL-114188-CADD\400-Engineering\Roadway\Sheets\114188_GT001.dgn

LEGEND

-  WORK ZONE
-  SIGNAL DETECTION ZONE, 9'-0" WIDE X 30'-0" LONG
-  EXISTING PAVEMENT TO BE MAINTAINED
-  EXISTING DITCH DRAINAGE TO BE MAINTAINED
-  BREAKAWAY TRAFFIC POLE



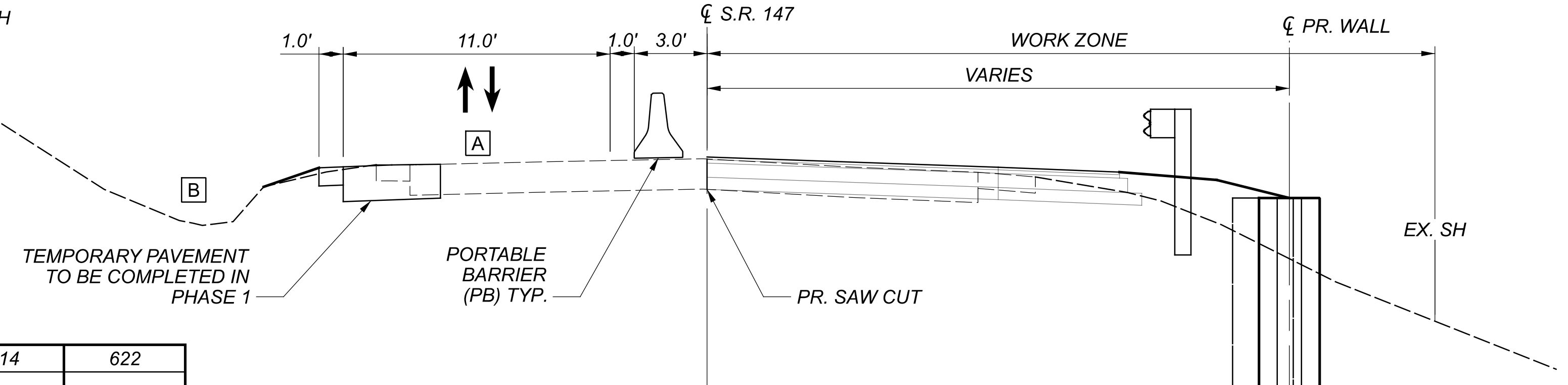
MAINTENANCE OF TRAFFIC PHASE 2



NOTES

FOR DETAILS NOT SHOWN REFER TO SCD'S:
 MT-96.11
 MT-96.20
 MT-96.26
 MT-97.10
 MT-101.60
 MT-101.70
 MT-101.75
 MT-101.90
 MT-105.10
 FOR CONTROLLER TIMING DETAILS, SEE SHEET P.10

MOT PHASE 2 TYPICAL SECTION



ITEM 614 - WORK ZONE CENTER LINE, CLASS I, 740.06, TYPE 1
 WZCL1 500' / 5280 = 0.0946 MI 0.10 MI
 WZCL2 500' / 5280 = 0.0946 MI 0.10 MI

ITEM 614 - WORK ZONE EDGE LINE, CLASS I, 6", 740.06, TYPE 1
 WZEL1 STA. 146+83.00 TO STA. 158+35.00 = 1148.12'
 1148.12' / 5280 = 0.2174 MI 0.22 MI
 WZEL2 STA. 147+36.00 TO STA. 157+82.00 = 1046.09'
 1046.09' / 5280 = 0.1981 MI 0.20 MI

ITEM 615 - PAVEMENT FOR MAINTAINING TRAFFIC, CLASS A
 PLAN MEASURED AREA = 611.65 SF
 TOTAL = 611.65 SF / 9 = 67.96 SY 68 SY

REF NO.	SHE NO.	STATION		SIDE	252 FULL DEPTH PAVEMENT SAWING FT	614 WORK ZONE IMPACT ATTENUATOR, 24" WIDE HAZARDS (BIDIRECTIONAL) EA	614 WORK ZONE CENTER LINE, CLASS I, 740.06 TYPE 1 MILE	614 WORK ZONE EDGE LINE, CLASS I, 6", 740.06, TYPE 1 MILE	614 WORK ZONE STOP LINE, CLASS I FT	614 INCREASED BARRIER DELINEATION FT	622 PORTABLE BARRIER, UNANCHORED FT
		FROM	TO								
PB-1	P.14-P.15	148+73.00	156+87.25	LT/RT		2				825	825
WZCL-1	P.14	141+83.00	146+83.00	☐			0.10				
WZCL-2	P.15,P.17	158+35.00	163+35.00	☐			0.10				
WZEL-1	P.14-P.15	146+83.00	158+35.00	LEFT				0.22			
WZEL-2		147+36.00	157+82.00	LT/RT				0.20			
MT-1	P.14,P.16	146+83.00		RIGHT					12		
MT-2	P.15,P.17	158+35.00		LEFT					12		
SC-1	P.14-P.15	148+70.00	156+30.00	☐	760						
TOTALS CARRIED TO GENERAL SUMMARY					760	2	0.20	0.42	24	825	825



DESIGNER	JXB
REVIEWER	RSB
PROJECT ID	9-14-23
SHEET	114188
TOTAL	68

