

UTILITIES

LISTED BELOW ARE ALL UTILITIES LOCATED WITHIN THE PROJECT CONSTRUCTION LIMITS TOGETHER WITH THEIR RESPECTIVE OWNERS:

AEP OHIO POWER COMPANY AT&T TRANSMISSION
ATTN: CLARKE SAUNDERS ATTN: BILL TAGGART
777 HOPEWELL DRIVE 8372 E. BROAD ST.
HEATH, OHIO 43056 REYNOLDSBURG, OH 43068
614-460-4794 614-868-2511
CMSAUNDERS@AEP.COM WT2462@ATT.COM

CITY OF MARTINS FERRY COLUMBIA GAS OF OHIO, INC.
WATER AND SEWER DEPARTMENT ATTN: ADAM STUPAK
ATTN: BILL SUTO 300 LURAY DRIVE
400 NORTH 1ST STREET WINTERSVILLE, OHIO 43953
MARTINS FERRY, OHIO 43935 419-575-2763
740-633-1330 ASTUPAK@NISOURCE.COM
BSUTO24@GMAIL.COM

COMCAST
ATTN: RICH KOPANIC
460 WASHINGTON ROAD
WASHINGTON, PA 15301
412-851-2645
RICHARD_KOPANIC@CABLE.COMCAST.COM

RAILROAD
ELDRIDGE CHAMBERS
PUBLIC IMPROVEMENTS ENGINEER
NORFOLK SOUTHERN CORPORATION
650 PEACHTREE STREET, NW, BOX 45
ATLANTA, GA 30308
(470) 463-6307 (o)
ELDRIDGE.CHAMBER@NSCORP.COM

THE LOCATION OF THE UNDERGROUND UTILITIES SHOWN ON THE PLANS ARE AS OBTAINED FROM THE OWNERS AS REQUIRED BY SECTION 153.64 O.R.C.

ONE CALL SERVICES DO NOT LOCATE BURIED RAILROAD SIGNAL AND COMMUNICATION LINES. THE CONTRACTOR SHALL CONTACT THE RAILROAD'S REPRESENTATIVE 2 DAYS IN ADVANCE OF WORK AT THOSE PLACES WHERE EXCAVATION, PILE DRIVING, OR HEAVY LOADS MAY DAMAGE THE RAILROAD'S FACILITIES. UPON REQUEST FROM THE CONTRACTOR OR SPONSER, RAILROAD FORCES WILL LOCATE AND PAINT MARK OR FLAG THE RAILROAD'S UNDERGROUND FACILITIES (SEE NS PUBLIC PROJECT MANUAL, APPENDIX E SECTION 3.D).

WORK LIMITS

THE WORK LIMITS SHOWN ON THESE PLANS ARE FOR PHYSICAL CONSTRUCTION ONLY. PROVIDE THE INSTALLATION AND OPERATION OF ALL WORK ZONE TRAFFIC CONTROL AND WORK ZONE TRAFFIC CONTROL DEVICES REQUIRED BY THESE PLANS WHETHER INSIDE OR OUTSIDE THESE WORK LIMITS.

CLEARING AND GRUBBING

ALTHOUGH THERE ARE NO TREES OR STUMPS SPECIFICALLY MARKED FOR REMOVAL WITHIN THE LIMITS OF THE PROJECT, A LUMP SUM QUANTITY IS INCLUDED IN THE GENERAL SUMMARY FOR ITEM 201, CLEARING AND GRUBBING. ALL PROVISIONS AS SET FORTH IN THE SPECIFICATIONS UNDER THIS ITEM ARE INCLUDED IN THE LUMP SUM PRICE BID FOR ITEM 201, CLEARING AND GRUBBING.

SURVEYING PARAMETERS

PRIMARY PROJECT CONTROL MONUMENTS GOVERN ALL POSITIONING ON ODOT PROJECTS. SEE SHEET P.2 OF THE PLANS FOR A TABLE CONTAINING PROJECT CONTROL INFORMATION.

USE THE FOLLOWING PROJECT CONTROL, VERTICAL POSITIONING, AND HORIZONTAL POSITIONING PARAMETERS FOR ALL SURVEYING:

PROJECT CONTROL
POSITIONING METHOD: ODOT VRS
MONUMENT TYPE: AS NOTED IN PROJECT CONTROL TABLE

VERTICAL POSITIONING
ORTHOMETRIC HEIGHT DATUM: NAVD 88
GEOID: GEOID 18

HORIZONTAL POSITIONING
REFERENCE FRAME: NAD83
ELLIPSOID: GRS80
MAP PROJECTION: LAMBERT CONFORMAL CONCI 2 STANDARD PARALLEL
COORDINATE SYSTEM: OHIO STATE PLANE (SOUTH ZONE)
COMBINED SCALE FACTOR: 1.0000134202
ORIGIN OF COORDINATE SYSTEM: 0,0

USE THE POSITIONING METHODS AND MONUMENT TYPE USED IN THE ORIGINAL SURVEY TO RESTORE ALL MONUMENTS RELATED TO PRIMARY PROJECT CONTROL THAT ARE DAMAGED OR DESTROYED BY CONSTRUCTION ACTIVITIES. RESTORE THE DAMAGED OR DESTROYED MONUMENTS IN ACCORDANCE WITH CMS 623.

UNITS ARE IN U.S. SURVEY FEET.

CONCRETE MEDIAN REMOVAL AND REPLACEMENT

THE CONTRACTOR SHALL REMOVE AS MUCH OF THE EXISTING CONCRETE MEDIAN AS NECESSARY TO MAINTAIN TRAFFIC AS SHOWN IN THE PLANS. ONCE THE CROSS OVERS ARE NO LONGER NEEDED FOR CONSTRUCTION, THE CONTRACTOR IS TO REBUILD THE CONCRETE MEDIANS PER SCD RM-3.1 .

THE FOLLOWING QUANTITIES HAVE BEEN CARRIED TO THE GENERAL SUMMARY FOR THE WORK DESCRIBED ABOVE AND ARE TO BE USED AS DIRECTED BY THE ENGINEER.

ITEM 202 - CONCRETE MEDIAN REMOVED ----- 208 SY
ITEM 609 - CONCRETE MEDIAN ----- 208 SY

RAILROAD RIGHT-OF-WAY

THE CONTRACTOR SHALL AT NO TIME ENTER THE RAILROAD RIGHT-OF-WAY WITH PERSONNEL OR EQUIPMENT UNTIL HE HAS COMPLIED WITH THE REQUIREMENTS PRESENTED IN THE NS PUBLIC PROJECTS MANUAL INCLUDING APPROVED RAILROAD PROTECTIVE INSURANCE, A CONTRACTOR RIGHT OF ENTRY, PROTECTIVE SERVICES ("FLAGGING"), ETC. AND RECEIVED FROM NS WRITTEN AUTHORIZATION TO PROCEED. (SEE APPENDIX E OF THE MANUAL, "NORFOLK SOUTHERN - SPECIAL PROVISIONS FOR PROTECTION OF RAILWAY INTEREST"). THE CONTRACTOR SHALL SO ARRANGE AND CONDUCT HIS WORK THAT THERE WILL BE NO INTERFERENCE WITH THE RAILROAD'S OPERATIONS. WHENEVER WORK IS LIABLE TO AFFECT THE OPERATIONS OR SAFETY OF TRAINS, THE METHODS OF DOING SUCH WORK SHALL FIRST BE SUBMITTED TO THE RAILROAD ENGINEER FOR APPROVAL, BUT SUCH APPROVAL SHALL NOT RELIEVE THE CONTRACTOR FROM ANY LIABILITY. RAILROAD PROTECTIVE SERVICES ("FLAGGING") AND/OR SECURITY FENCE SHALL BE PROVIDED AS DIRECTED BY THE RAILROAD ENGINEER OR HIS FIELD REPRESENTATIVE.

ENDANGERED BAT HABITAT REMOVAL

THE PROJECT IS LOCATED WITHIN THE KNOWN HABITAT RANGES OF THE FEDERALLY LISTED AND PROTECTED INDIANA BAT AND NORTHERN LONG-EARED BAT. NO TREES SHALL BE REMOVED UNDER THIS PROJECT FROM APRIL 1 THROUGH SEPTEMBER 30. ALL NECESSARY TREE REMOVAL SHALL OCCUR FROM OCTOBER 1 THROUGH MARCH 31. THIS REQUIREMENT IS NECESSARY TO AVOID AND MINIMIZE IMPACTS TO THESE SPECIES AS REQUIRED BY THE ENDANGERED SPECIES ACT. FOR THE PURPOSES OF THIS NOTE, A TREE IS DEFINED AS A LIVE, DYING, OR DEAD WOODY PLANT, WITH A TRUNK THREE INCHES OR GREATER IN DIAMETER AT A HEIGHT OF 4.5 FEET ABOVE THE GROUND SURFACE, AND WITH A MINIMUM HEIGHT OF 13 FEET.

REVIEW OF DRAINAGE FACILITIES

PRIOR TO THE START OF WORK AND AGAIN BEFORE FINAL ACCEPTANCE, PERFORM AN INSPECTION WITH REPRESENTATIVES OF THE DEPARTMENT, CONTRACTOR AND LOCALS OF ALL EXISTING DRAINAGE FACILITIES THAT ARE TO REMAIN IN SERVICE WHICH MAY BE AFFECTED BY THE WORK. THE CONDITION OF THE EXISTING CONDUITS AND THEIR APPURTENANCES IS DETERMINED FROM FIELD OBSERVATIONS. RECORDS OF THE INSPECTION ARE MAINTAINED BY THE DEPARTMENT.

CONFIRM ALL EXISTING SEWERS INSPECTED INITIALLY BY THE ABOVE-MENTIONED PARTIES ARE MAINTAINED AND LEFT IN A CONDITION COMPARABLE TO THAT DETERMINED BY THE ORIGINAL INSPECTION. THE CONTRACTOR IS RESPONSIBLE TO CORRECT ANY CHANGE IN THE CONDITION RESULTING FROM THEIR OPERATIONS AS DIRECTED AND APPROVED BY THE ENGINEER.

THE INTENT OF THIS PROJECT WILL NOT CHANGE THE QUANTITY AND/OR CHARACTER OF FLOW IN THE RAILWAY'S DITCHES AND/OR DRAINAGE STRUCTURES.

PAYMENT FOR ALL OPERATIONS DESCRIBED ABOVE IS INCLUDED IN THE CONTRACT PRICE FOR THE PERTINENT 611 CONDUIT ITEMS.

SEEDING AND MULCHING

THE FOLLOWING QUANTITIES ARE PROVIDED TO PROMOTE GROWTH AND CARE OF PERMANENT SEEDED AREAS:

ITEM 659 - COMMERCIAL FERTILIZER ----- 0.08 TON
ITEM 659 - LIME ----- 0.12 AC
ITEM 659 - WATER ----- 4 M. GAL.
ITEM 659 - SOIL ANALYSIS TEST ----- 1 EACH
ITEM 659 - TOPSOIL ----- 65 CY
ITEM 659 - SEEDING AND MULCHING ----- 581 SY

SEEDING AND MULCHING SHALL BE APPLIED TO ALL AREAS OF EXPOSED SOIL BETWEEN THE RIGHT-OF-WAY LINES, AND WITHIN THE CONSTRUCTION LIMITS FOR AREAS OUTSIDE THE RIGHT-OF-WAY LINES COVERED BY WORK AGREEMENT OR SLOPE EASEMENT. QUANTITY CALCULATIONS FOR SEEDING AND MULCHING ARE BASED ON THESE LIMITS.

ITEM 614 – ASPHALT CONCRETE FOR MAINTAINING TRAFFIC, AS PER PLAN
THE FOLLOWING QUANTITY HAS BEEN CARRIED TO THE GENERAL SUMMARY TO BE USED AS DIRECTED BY THE ENGINEER SHOULD THE EXISTING ASPHALT PAVEMENT BE IN NEED OF REPAIR FOLLOWING THE REMOVAL AND REPLACEMENT OF THE RAISED CONCRETE MEDIAN. THE ASPHALT SUPPLIED FOR THIS ITEM SHALL BE PG 70-22 SURFACE ASPHALT. THE PAVEMENT THICKNESS USED FOR CALCULATIONS IS 12".
ITEM 614 – ASPHALT CONCRETE FOR MAINTAINING TRAFFIC, AS PER PLAN ----- 43 CY
PAYMENT FOR ALL LABOR, EQUIPMENT AND MATERIAL SHALL BE INCLUDED IN THE PRICE BID FOR ITEM 614 – ASPHALT CONCRETE FOR MAINTAINING TRAFFIC, AS PER PLAN.

ASBESTOS SURVEY

AN ASBESTOS SURVEY FOR SFN 0700630, PEDESTRIAN BRIDGE SCHEDULED FOR DEMOLITION WORK WAS CONDUCTED BY A LICENSED ASBESTOS HAZARD EVALUATION SPECIALIST. A COPY OF THE ASBESTOS INSPECTION REPORT FOR THE STRUCTURE IS INCLUDED IN THE PLAN PACKAGE FOR THIS PROJECT. THE ASBESTOS INSPECTION REPORT DID NOT IDENTIFY THE PRESENCE OF ANY ASBESTOS CONTAINING MATERIALS ABOVE REGULATORY LIMITS.

DISPOSE ASBESTOS CONTAINING MATERIALS IN A LANDFILL LICENSED BY THE OHIO DEPARTMENT OF HEALTH AND PERMITTED BY THE OHIO ENVIRONMENTAL PROTECTION AGENCY - DIVISION OF AIR POLLUTION CONTROL TO ACCEPT ASBESTOS CONTAINING MATERIAL. THE REMOVAL AND DISPOSAL OF ALL ASBESTOS CONTAINING MATERIAL MUST COMPLY WITH THE OHIO ADMINISTRATIVE CODE (OAC) REGULATIONS AND THE NATIONAL EMISSION STANDARD FOR HAZARDOUS AIR POLLUTANTS (NESHAP) STANDARD FOR ASBESTOS.

ELECTRONIC SUBMISSION:

SUBMIT A COMPLETED ELECTRONIC NOTIFICATION OF DEMOLITION AND RENOVATION FORM (NDRF), APPLICABLE FEES, AND THE ASBESTOS INSPECTION REPORT TO THE OEPA AT LEAST 10 DAYS PRIOR TO ANY DEMOLITION ACTIVITY, RENOVATION ACTIVITY, OR BOTH. SUBMIT THE NDRF AND PAYMENT ALONG WITH THE ASBESTOS INSPECTION REPORT USING THE OEPA EBUSINESS CENTER. SUBMIT ONE ELECTRONIC PDF COPY AND ONE HARD COPY OF THE NDRF TO THE ENGINEER. THE ENGINEER WILL PROVIDE ONE COPY TO THE DISTRICT ENVIRONMENTAL STAFF.

HARD COPY SUBMISSION:

THE CONTRACTOR MAY SUBMIT A HARD COPY OF THE COMPLETED NDRF AND PAYMENT ALONG WITH THE ASBESTOS INSPECTION REPORT. FOLLOW THE MAILING INSTRUCTIONS ON THE NDRF. CHECK WITH LOCAL HEALTH DEPARTMENT AT (740)695-1202 TO DETERMINE IF THEY REQUIRE A HARD COPY SUBMITTAL.

SUBMIT THE COMPLETED NDRF TO OEPA AT LEAST 10 DAYS PRIOR TO DEMOLITION ACTIVITY, RENOVATION ACTIVITY, OR BOTH. RETAIN TWO HARD COPIES OF THE NDRF AND SUBMIT ONE COPY TO THE ENGINEER AND EMAIL ONE COPY TO THE ODOT DISTRICT ENVIRONMENTAL COORDINATOR AT: THOMAS.STRATTON@DOT.OHIO.GOV.

BASIS OF PAYMENT

SUBMIT ALL DOCUMENTATION RELATED TO THE SURVEY, ABATEMENT, TRANSPORT, AND DISPOSAL OF ASBESTOS CONTAINING MATERIALS TO THE ENGINEER WITHIN TWO WEEKS OF COMPLETION. THE ENGINEER WILL PROVIDE A COPY OF THE DOCUMENTATION TO THE DISTRICT ENVIRONMENTAL STAFF.

PAYMENT FOR THIS WORK SHALL BE MADE AT THE BID PRICE OF LUMP SUM.

THE FOLLOWING ESTIMATED QUANTITY HAS BEEN INCLUDED IN THE GENERAL SUMMARY FOR THE WORK NOTED ABOVE:

ITEM SPECIAL - MISC.: WORK INVOLVING ASBESTOS CONTAINING MATERIALS ----- L.S.

FENCE LENGTHS

THE LENGTHS OF FENCE SHOWN IN THE PLANS ARE HORIZONTAL DIMENSIONS. MEASUREMENTS OF THE FINAL QUANTITIES WILL BE IN ACCORDANCE WITH ITEM 607.

DESIGN AGENCY

Stantec
1500 LAKE SHORE DRIVE,
SUITE 100
COLUMBUS, OH 43204
(614) 486-4383
DESIGNER
SLP
REVIEWER
ALB 01/10/24
PROJECT ID
114382
SHEET TOTAL
P.3 | 69

BEL-7-22.23

MODEL: Sheet PAPER: 34x22 (in.) DATE: 10/11/2024 TIME: 10:22:30 AM USER: bmoncal
pw:\ohio\pw-bentley.com\hobdop-pw-02\Documents\01 Active Projects\District 11\Belmont\114382\401-Engineering_Stantec\Roadway\Sheets\114382_GG001.dgn

SHEET NUM.												PART.	ITEM	ITEM	GRAND	UNIT	DESCRIPTION	SEE SHEET NO.
P.3	P.6	P.26	P.29	P.37								01/NHS/13	EXT	TOTAL				
ROADWAY																		
LS												LS	201	11000	LS		CLEARING AND GRUBBING	
208												208	202	30600	208	SY	CONCRETE MEDIAN REMOVED	
		58										58	202	75000	58	FT	FENCE REMOVED	
		1										1	202	98100	1	EACH	REMOVAL MISC.: BOLLARD	
		58										58	607	23000	58	FT	FENCE, TYPE CLT	
		1										1	SPECIAL	69050600	1	EACH	BOLLARD	
																	P.26	
																	P.26	
EROSION CONTROL																		
1												1	659	00100	1	EACH	SOIL ANALYSIS TEST	
65												65	659	00300	65	CY	TOPSOIL	
581												581	659	10000	581	SY	SEEDING AND MULCHING	
0.08												0.08	659	20000	0.08	TON	COMMERCIAL FERTILIZER	
0.12												0.12	659	31000	0.12	ACRE	LIME	
4												4	659	35000	4	MGAL	WATER	
												20,000	832	30000	20,000	EACH	EROSION CONTROL	
PAVEMENT																		
208												208	609	72000	208	SY	CONCRETE MEDIAN	
LIGHTING																		
			1									1	202	62000	1	EACH	JUNCTION BOX REMOVED	
			16									16	625	00450	16	EACH	CONNECTION, FUSED PULL APART	
			72									72	625	00480	72	EACH	CONNECTION, UNFUSED PERMANENT	
			4									4	625	10490	4	EACH	LIGHT POLE, CONVENTIONAL, AON15	
			4									4	625	10614	4	EACH	LIGHT POLE ANCHOR BOLTS ON STRUCTURE	
			2,061									2,061	625	23200	2,061	FT	NO. 4 AWG 2400 VOLT DISTRIBUTION CABLE	
			669									669	625	23300	669	FT	NO. 2 AWG 2400 VOLT DISTRIBUTION CABLE	
			120									120	625	23400	120	FT	NO. 10 AWG POLE AND BRACKET CABLE	
			316									316	625	25400	316	FT	CONDUIT, 2", 725.04	
			208									208	625	25500	208	FT	CONDUIT, 3", 725.04	
			10									10	625	25910	10	FT	CONDUIT CLEANED AND CABLES REMOVED	
			4									4	625	27402	4	EACH	LUMINAIRE, POST TOP, SOLID STATE (LED), LANTERN STYLE, 3000K, BLACK FINISH, TYPE II, 30W	
			4									4	625	27503	4	EACH	LUMINAIRE, UNDERPASS, SOLID STATE (LED), AS PER PLAN, 27-67W, 240V	
			34									34	625	29000	34	FT	TRENCH	
			15									15	625	29900	15	EACH	JUNCTION BOX	
			1									1	625	33000	1	EACH	STRUCTURE GROUNDING SYSTEM	
			34									34	625	36010	34	FT	UNDERGROUND WARNING/MARKING TAPE	
			2									2	625	39520	2	EACH	PULL BOX CLEANED	
			LS									LS	SPECIAL	62540000	LS		MAINTAIN EXISTING LIGHTING	
			9									9	625	75506	9	EACH	LUMINAIRE REMOVED	
			5									5	625	75520	5	EACH	LUMINAIRE SUPPORT REMOVED	
			3									3	625	75801	3	EACH	DISCONNECT CIRCUIT, AS PER PLAN	
																	P.28	
																	P.27	
TRAFFIC CONTROL																		
	1.63											1.63	646	10010	1.63	MILE	EDGE LINE, 6"	
	1.83											1.83	646	10110	1.83	MILE	LANE LINE, 6"	
	120											120	646	10310	120	FT	CHANNELIZING LINE, 12"	
	2											2	646	20300	2	EACH	LANE ARROW	
STRUCTURE OVER 20 FOOT SPAN (SFN: 0700630)																		
				LS								LS	202	11201	LS		PORTIONS OF STRUCTURE REMOVED, AS PER PLAN	
				LS								LS	202	98000	LS		REMOVAL MISC.: GRAFFITI	
				LS								LS	503	11100	LS		COFFERDAMS AND EXCAVATION BRACING	
				67								67	503	21101	67	CY	UNCLASSIFIED EXCAVATION, AS PER PLAN	
				LS								LS	505	11100	LS		PILE DRIVING EQUIPMENT MOBILIZATION	
				220								220	507	00500	220	FT	12" CAST-IN-PLACE REINFORCED CONCRETE PILES, DRIVEN	
				240								240	507	00550	240	FT	12" CAST-IN-PLACE REINFORCED CONCRETE PILES, FURNISHED	
				54,883								54,883	509	10001	54,883	LB	EPOXY COATED STEEL REINFORCEMENT, AS PER PLAN	
				200								200	509	20001	200	LB	CONCRETE REINFORCEMENT, REPLACEMENT OF EXISTING CONCRETE REINFORCEMENT, AS PER PLAN	
				290								290	510	10000	290	EACH	DOWEL HOLES WITH NONSHRINK, NONMETALLIC GROUT	
																	P.35	
																	P.40	
																	P.35	
																	P.36	
																	P.36	

GENERAL SUMMARY

DESIGN AGENCY



Stantec
1500 LAKE SHORE DRIVE.
SUITE 100
COLUMBUS, OH 43204
614.486-4383

DESIGNER
SLP

REVIEWER
ALB 01/10/24

PROJECT ID
114382

SHEET TOTAL
P.24 | 69

SHEET NUM.											PART.	ITEM	ITEM	GRAND	UNIT	DESCRIPTION	SEE SHEET NO.
P.3	P.4	P.5	P.6	P.7	P.37						01/NHS/13	EXT	TOTAL				
STRUCTURE OVER 20 FOOT SPAN (SFN: 0700630) (CONT.)																	
					21						21	510	10001	21	EACH	DOWEL HOLES WITH NONSHRINK, NONMETALLIC GROUT, AS PER PLAN	P.36
					72						72	511	34444	72	CY	CLASS QC2 CONCRETE, BRIDGE DECK	
					6						6	511	42510	6	CY	CLASS QC1 CONCRETE, PIER CAP	
					5						5	511	45710	5	CY	CLASS QC1 CONCRETE, ABUTMENT	
					6						6	511	46510	6	CY	CLASS QC1 CONCRETE, FOOTING	
					94						94	511	53012	94	CY	CLASS QC2 CONCRETE, MISC.: FORWARD ABUTMENT AND STAIR TOWER	P.35
					366						366	512	10001	366	SY	SEALING OF CONCRETE SURFACES, AS PER PLAN, (PERMANENT GRAFFITI PROTECTION)	P.36
					683						683	512	10100	683	SY	SEALING OF CONCRETE SURFACES (EPOXY-URETHANE)	
					8						8	512	33000	8	SY	TYPE 2 WATERPROOFING	
					82						82	512	74000	82	SY	REMOVAL OF EXISTING COATINGS FROM CONCRETE SURFACES	
					3						3	515	15000	3	EACH	DRAPED STRAND PRESTRESSED CONCRETE BRIDGE I-BEAM MEMBERS, LEVEL 3, TYPE 2, 62' - 8 3/8" LONG	
					3						3	515	15000	3	EACH	DRAPED STRAND PRESTRESSED CONCRETE BRIDGE I-BEAM MEMBERS, LEVEL 3, TYPE 2, 77' - 5 7/8" LONG	
					1						1	515	15000	1	EACH	DRAPED STRAND PRESTRESSED CONCRETE BRIDGE I-BEAM MEMBERS, LEVEL 3, TYPE 2, 79' - 10 1/8" LONG	
					1						1	515	15000	1	EACH	DRAPED STRAND PRESTRESSED CONCRETE BRIDGE I-BEAM MEMBERS, LEVEL 3, TYPE 2, 82' - 1 3/4" LONG	
					1						1	515	15000	1	EACH	DRAPED STRAND PRESTRESSED CONCRETE BRIDGE I-BEAM MEMBERS, LEVEL 3, TYPE 2, 83' - 2 1/4" LONG	
					10						10	515	20000	10	EACH	INTERMEDIATE DIAPHRAGMS	
					21						21	516	12302	21	FT	STRIP SEAL EXPANSION JOINT ANCHORED WITH ELASTOMERIC CONCRETE	
					5						5	516	13200	5	SF	1/2" PREFORMED EXPANSION JOINT FILLER	
					18						18	516	44001	18	EACH	ELASTOMERIC BEARING WITH INTERNAL LAMINATES AND LOAD PLATE (NEOPRENE), AS PER PLAN, 7" X 14" X 1.764"	P.50
					342						342	517	75001	342	FT	RAILING, ALUMINUM, AS PER PLAN	P.36
					449						449	517	75122	449	FT	RAILING (CONCRETE PARAPET WITH TWIN STEEL TUBE RAILING AND VANDAL PROTECTION FENCE)	
					17						17	518	21200	17	CY	POROUS BACKFILL WITH GEOTEXTILE FABRIC	
					17						17	518	40000	17	FT	6" PERFORATED CORRUGATED PLASTIC PIPE	
					25						25	518	40010	25	FT	6" NON-PERFORATED CORRUGATED PLASTIC PIPE, INCLUDING SPECIALS	
					743						743	SPECIAL	51900100	743	SF	COMPOSITE FIBER WRAP SYSTEM	P.39
					10						10	519	11101	10	SF	PATCHING CONCRETE STRUCTURE, AS PER PLAN	P.35
LS					99						99	608	10000	99	SF	4" CONCRETE WALK	P.3
											LS	SPECIAL	69098400	LS		WORK INVOLVING ASBESTOS CONTAINING MATERIALS	
MAINTENANCE OF TRAFFIC																	
			300								300	614	11110	300	hour	LAW ENFORCEMENT OFFICER WITH PATROL CAR FOR ASSISTANCE	
			1,980								1,980	614	11630	1,980	FT	INCREASED BARRIER DELINEATION	
				7							7	614	12384	7	EACH	WORK ZONE IMPACT ATTENUATOR, 24" WIDE HAZARDS, (BIDIRECTIONAL)	
			2								2	614	12756	2	EACH	WORK ZONE Crossover LIGHTING SYSTEM	
				15							15	614	13000	15	CY	ASPHALT CONCRETE FOR MAINTAINING TRAFFIC	
43											43	614	13001	43	CY	ASPHALT CONCRETE FOR MAINTAINING TRAFFIC, AS PER PLAN	P.3
			330								330	614	13310	330	EACH	BARRIER REFLECTOR, TYPE 1, ONE-WAY	
			330								330	614	13360	330	EACH	OBJECT MARKER, TWO WAY	
				12							12	614	18601	12	SNMT	PORTABLE CHANGEABLE MESSAGE SIGN, AS PER PLAN	P.6
				1.83							1.83	614	20560	1.83	MILE	WORK ZONE LANE LINE, CLASS III, 6", 642 PAINT	
					8.49						8.49	614	22210	8.49	MILE	WORK ZONE EDGE LINE, CLASS I, 6", 740.06, TYPE I	
				1.63							1.63	614	22360	1.63	MILE	WORK ZONE EDGE LINE, CLASS III, 6", 642 PAINT	
					3,543						3,543	614	24402	3,543	FT	WORK ZONE DOTTED LINE, CLASS I, 6", 740.06, TYPE I	
					208						208	615	25000	208	SY	PAVEMENT FOR MAINTAINING TRAFFIC, CLASS B	
	5										5	616	10000	5	MGAL	WATER	
					16,480						16,480	622	41011	16,480	FT	PORTABLE BARRIER, 50", AS PER PLAN	P.4
					110						110	622	41100	110	FT	PORTABLE BARRIER, UNANCHORED	
											117,000	900	00100	117,000	EACH	RAILROAD FLAGGING SERVICES	
INCIDENTALS																	
	LS										LS	614	11000	LS		MAINTAINING TRAFFIC	
											7	619	16010	7	MNTH	FIELD OFFICE, TYPE B	
											LS	623	10000	LS		CONSTRUCTION LAYOUT STAKES AND SURVEYING	
											LS	624	10000	LS		MOBILIZATION	

GENERAL SUMMARY

DESIGN AGENCY

Stantec
 1500 LAKE SHORE DRIVE,
 SUITE 100
 COLUMBUS, OH 43204
 (614) 486-4383
 DESIGNER
 SLP
 REVIEWER
 ALB 01/10/24
 PROJECT ID
 114382
 SHEET TOTAL
 P.25 | 69

REFERENCE NO.	SHEET NO.	SIDE	ROADWAY	STATION TO STATION		625																				202	JUNCTION BOX SIZE	
						CONNECTION, FUSED PULL APART	CONNECTION, UNFUSED PERMANENT	LIGHT POLE, CONVENTIONAL, AON15	LIGHT POLE ANCHOR BOLTS ON STRUCTURE	NO. 2 AWG 2400 VOLT DISTRIBUTION CABLE	NO. 4 AWG 2400 VOLT DISTRIBUTION CABLE	NO. 10 AWG POLE AND BRACKET CABLE	CONDUIT, 2", 725.04	CONDUIT, 3", 725.04	LUMINAIRE, POST-TOP, SOLID-STATE (LED), LANTERN STYLE, 3000K, BLACK FINISH TYPE II, 30W	LUMINAIRE, UNDERPASS, SOLID STATE (LED), AS PER PLAN, 27-67W, 240V	TRENCH	JUNCTION BOX	STRUCTURE GROUNDING SYSTEM	UNDERGROUND WARNING/MARKING TAPE	SPECIAL - MAINTAIN EXISTING LIGHTING	PULL BOX CLEANED	LUMINAIRE SUPPORT REMOVED	LUMINAIRE REMOVED	CONDUIT CLEANED AND CABLES REMOVED			DISCONNECT CIRCUIT, AS PER PLAN
						EACH	EACH	EACH	EACH	FT	FT	FT	FT	FT	EACH	EACH	FT	LS	EACH	EACH	EACH	FT	EACH	EACH				
CIRCUIT P																												
L1	30	LT	S.R. 7	3+48.00	TO 3+52.60													LS		5	9							
L2	30	LT	S.R. 7	3+48.00	TO 3+52.60		3																					
L3	30	LT/RT	S.R. 7	3+52.60	TO 3+62.70		3				90	20							18							12"X12"X8"		
L4	30	RT	S.R. 7	3+62.70	TO 3+68.00		3				30	5														14"X14"X10"		
L5	30	RT	S.R. 7	3+68.00	TO 3+72.00		3				45	10														18"X12"X8"		
L6	30	RT	S.R. 7	3+72.00	TO 4+38.00	2		1	1		36	30		1						1								
L7	30	RT	S.R. 7	3+72.00	TO 4+38.00						228	76																
L8	30	RT	S.R. 7	4+38.00	TO 5+03.00		3																			18"X12"X8"		
L9	30	RT	S.R. 7	4+38.00	TO 5+03.00	2		1	1		36	30		1														
L10	30	RT	S.R. 7	4+38.00	TO 5+03.00						225	75																
L11	30	RT	S.R. 7	5+03.00	TO 5+68.00		3																			18"X12"X8"		
L12	30	RT	S.R. 7	5+03.00	TO 5+68.00	2		1	1		36	30		1														
L13	30	RT	S.R. 7	5+03.00	TO 5+68.00						225	75																
L14	30	RT	S.R. 7	5+68.00	TO 5+80.50		3																			18"X12"X8"		
L15	30	RT	S.R. 7	5+68.00	TO 5+80.50	2		1	1		36	30		1														
L16	30	RT	S.R. 7	5+68.00	TO 5+80.50		3				30	5														14"X14"X10"		
L17	30	RT	S.R. 7	5+72.00	TO 5+80.50		3				45	10														16"X12"X8"		
L18	30	RT	S.R. 7	5+80.50	TO 5+82.80		3				72	14														12"X12"X8"		
L19	30	RT	S.R. 7	5+82.80	TO 5+83.80		3				39	3														24"X12"X8"		
L20	30	RT	S.R. 7	5+82.80	TO 5+83.80		3				39	3														24"X12"X8"		
L21	30	LT	S.R. 7	5+83.80	TO 5+83.80	2					48	6																
L22	30	LT	S.R. 7	5+83.80	TO 5+83.80	2					48	6																
L23	30	RT	S.R. 7	5+83.80	TO 5+83.80	2					42	4																
L24	30	RT	S.R. 7	5+83.80	TO 5+83.80	2					42	4																
CIRCUITS EA & EB																												
L25	30	LT	S.R. 7	3+48.00	TO 3+51.30		6																					
L26	30	RT	S.R. 7	3+51.30	TO 3+59.00		6				84	84		18						16						18"X18"X8"		
L27	30	RT	S.R. 7	3+59.00	TO 3+76.00		6				75	75		25												14"X14"X10"		
L28	30	RT	S.R. 7	3+76.00	TO 4+77.00		6				315	315		105												14"X14"X10"		
L29	30	LT/RT	S.R. 7	4+77.00	TO 4+97.00		6				90	90		30												24"X8"X8"		
L30	31	LT/RT	S.R. 7	4+97.00	TO 4+97.00		6				105	105		30														
TOTALS CARRIED TO GENERAL SUMMARY						16	72	4	4	669	2061	120	316	208	4	4	34		15	1	34	LS	2	5	9	10	2	1

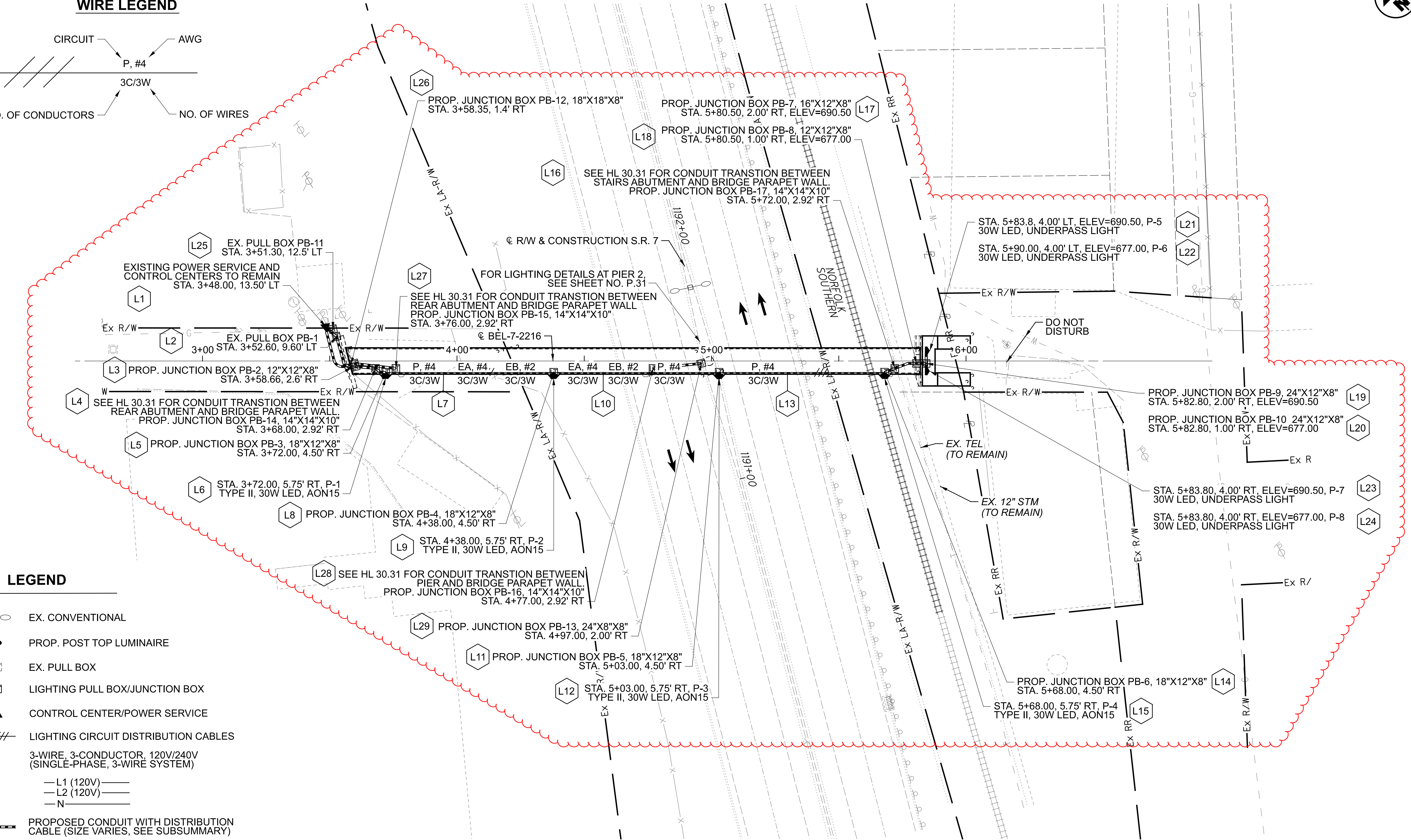
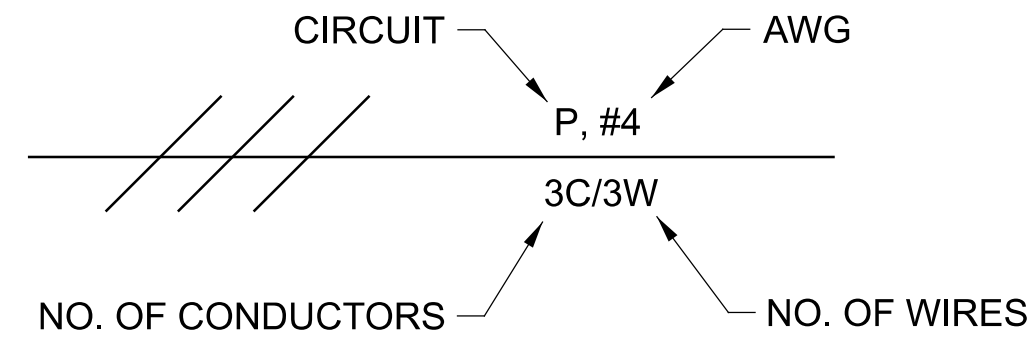
DESIGN AGENCY

Stantec
 500 LAKE SHORE DRIVE,
 SUITE 100
 COLUMBUS, OH 43204
 (614) 486-4383
 DESIGNER
 MTM
 REVIEWER
 PJD 01/10/24
 PROJECT ID
 114382
 SHEET TOTAL
 P.29 69

POLE LEGEND

STATION	OFFSET	CIRCUIT NUMBER	POLE NUMBER	POLE REF. NO.
TYPE OF LUMINAIRE	WATTAGE OF LUMINAIRE	POLE DESCRIPTION		

WIRE LEGEND



LEGEND

- EX. CONVENTIONAL
- PROP. POST TOP LUMINAIRE
- EX. PULL BOX
- LIGHTING PULL BOX/JUNCTION BOX
- CONTROL CENTER/POWER SERVICE
- LIGHTING CIRCUIT DISTRIBUTION CABLES
3-WIRE, 3-CONDUCTOR, 120V/240V (SINGLE-PHASE, 3-WIRE SYSTEM)
— L1 (120V)
— L2 (120V)
— N
- PROPOSED CONDUIT WITH DISTRIBUTION CABLE (SIZE VARIES, SEE SUBSUMMARY)
- SUB-SUMMARY REFERENCE NUMBER

PLAN



**LIGHTING PLAN
PEDESTRIAN BRIDGE OVER S.R. 7**

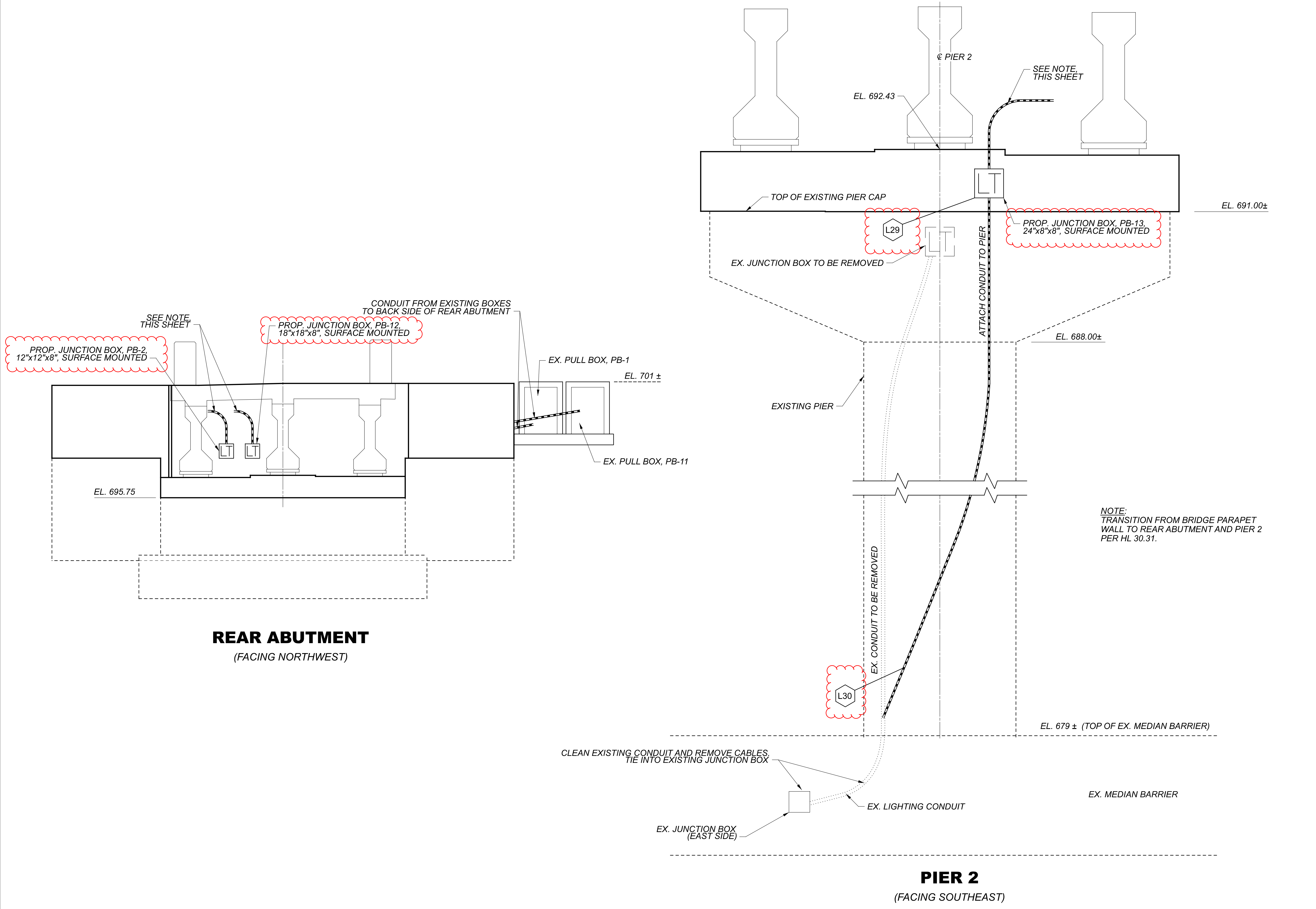
BEL-7-22.23

MODEL: Plan I [Sheet] PAPER SIZE: 34x22 (in.) DATE: 10/10/2024 TIME: 14:37 PM USER: bmcneal p:\ohiodot-pw\bentley.com\ohiodot-pw-02\Documents\01 Active Projects\Distric IN Belmont\14382\40-Engineering\Stantec\Lighting_Sheets\14382_LP001.dgn

DESIGN AGENCY

1500 LAKE SHORE DRIVE, SUITE 100, COLUMBUS, OH 43204 (614) 486-4383

DESIGNER	ALS
REVIEWER	PJD 01/10/24
PROJECT ID	114328
SHEET	TOTAL
P.30	69



REAR ABUTMENT
(FACING NORTHWEST)

PIER 2
(FACING SOUTHEAST)

LIGHTING ELEVATION DETAIL

DESIGN AGENCY

Stantec
 1500 LAKE SHORE DRIVE,
 SUITE 100
 COLUMBUS, OH 43204
 (614) 486-4383

DESIGNER
ALS

REVIEWER
 PJD 01/10/24

PROJECT ID
 114382

SHEET TOTAL
 P.31 | 69

ESTIMATED QUANTITIES										CALCULATED BY: ALH 12/2023	
										CHECKED BY: TRK xx/xx/xx	
ITEM	EXTENSION	TOTAL	UNIT	DESCRIPTION	ABUT.	PIERS	STAIR TOWER	SUPER.	GENERAL	SEE SHEET	
202	11201	LUMP	LS	PORTIONS OF STRUCTURE REMOVED, AS PER PLAN	LUMP	LUMP	LUMP	LUMP		2 29	
202	98000	LUMP	LS	REMOVAL MISC.: GRAFFITI			LUMP			3 29, 12/29	
503	11100	LUMP	LS	COFFERDAMS AND EXCAVATION BRACING	LUMP		LUMP				
503	21101	67	CY	UNCLASSIFIED EXCAVATION, AS PER PLAN	17		50			2 29	
505	11100	LUMP	LS	PILE DRIVING EQUIPMENT MOBILIZATION			LUMP				
507	00500	220	FT	12" CAST-IN-PLACE REINFORCED CONCRETE PILES, DRIVEN				220			
507	00550	240	FT	12" CAST-IN-PLACE REINFORCED CONCRETE PILES, FURNISHED				240			
509	10001	54,883	LB	EPOXY COATED STEEL REINFORCEMENT, AS PER PLAN	526	603	30,533	23,221		3 29	
509	20001	200	LB	CONCRETE REINFORCEMENT, REPLACEMENT OF EXISTING CONCRETE REINFORCEMENT, AS PER PLAN	100	100				3 29	
510	10000	290	EACH	DOWEL HOLES WITH NONSHRINK, NONMETALLIC GROUT		22	268				
510	10001	21	EACH	DOWEL HOLES WITH NONSHRINK, NONMETALLIC GROUT, AS PER PLAN			21			3 29	
511	34444	72	CY	CLASS QC2 CONCRETE, BRIDGE DECK				72			
511	42510	6	CY	CLASS QC1 CONCRETE, PIER CAP		6					
511	45710	5	CY	CLASS QC1 CONCRETE, REAR ABUTMENT	5						
511	46510	6	CY	CLASS QC1 CONCRETE, FOOTING			6				
511	53012	94	CY	CLASS QC2 CONCRETE, MISC.: FORWARD ABUTMENT AND STAIR TOWER			94				
512	10001	366	SY	SEALING OF CONCRETE SURFACES, AS PER PLAN, (PERMANENT GRAFFITI PROTECTION)			366			3 29	
512	10100	683	SY	SEALING OF CONCRETE SURFACES (EPOXY-URETHANE)	16	64		603			
512	33000	8	SY	TYPE 2 WATERPROOFING	8						
512	74000	82	SY	REMOVAL OF EXISTING COATINGS FROM CONCRETE SURFACE			82				
515	15000	3	EACH	DRAPED STRAND PRESTRESSED CONCRETE BRIDGE I-BEAM MEMBERS, LEVEL 3, TYPE 2, 62'-8 3/8" LONG, AS PER PLAN				3		18 29	
515	15000	3	EACH	DRAPED STRAND PRESTRESSED CONCRETE BRIDGE I-BEAM MEMBERS, LEVEL 3, TYPE 2, 77'-5 7/8" LONG, AS PER PLAN				3		19 29	
515	15000	1	EACH	DRAPED STRAND PRESTRESSED CONCRETE BRIDGE I-BEAM MEMBERS, LEVEL 3, TYPE 2, 83'-2 1/4" LONG, AS PER PLAN				1		20 29	
515	15000	1	EACH	DRAPED STRAND PRESTRESSED CONCRETE BRIDGE I-BEAM MEMBERS, LEVEL 3, TYPE 2, 82'-1 3/4" LONG, AS PER PLAN				1		20 29	
515	15000	1	EACH	DRAPED STRAND PRESTRESSED CONCRETE BRIDGE I-BEAM MEMBERS, LEVEL 3, TYPE 2, 79'-10 1/8" LONG, AS PER PLAN				1		20 29	
515	20000	10	EACH	INTERMEDIATE DIAPHRAGMS				10			
516	12302	21	FT	STRIP SEAL EXPANSION JOINT ANCHORED WITH ELASTOMERIC CONCRETE				21			
516	13200	5	SF	1/2" PREFORMED EXPANSION JOINT FILLER			5				
516	44001	18	EACH	ELASTOMERIC BEARING WITH INTERNAL LAMINATES AND LOAD PLATE (NEOPRENE), 7" X 14" X 1.7638", AS PER PLAN	3	12	3			17 29	
517	75001	342	FT	RAILING, ALUMINUM, AS PER PLAN			342			3 29	
517	75122	449	FT	RAILING (CONCRETE PARAPET WITH TWIN STEEL TUBE RAILING AND VANDAL PROTECTION FENCE)				449			
518	21200	17	CY	POROUS BACKFILL WITH GEOTEXTILE FABRIC	17						
518	40000	17	FT	6" PERFORATED CORRUGATED PLASTIC PIPE	17						
518	40010	25	FT	6" NON-PERFORATED CORRUGATED PLASTIC PIPE, INCLUDING SPECIALS	25						
SPECIAL	519E00100	743	SF	COMPOSITE FIBER WRAP SYSTEM		743					
519	11101	10	SF	PATCHING CONCRETE STRUCTURE, AS PER PLAN			10			2 29	
608	10000	99	SF	4" CONCRETE WALK			99				
SPECIAL	69098400	LUMP	LS	WORK INVOLVING ASBESTOS CONTAINING MATERIALS							

ESTIMATED QUANTITIES
 BRIDGE NO. BEL-00007-22.160
 PEDESTRIAN BRIDGE OVER S.R. 7

SFN
0700630

DESIGN AGENCY



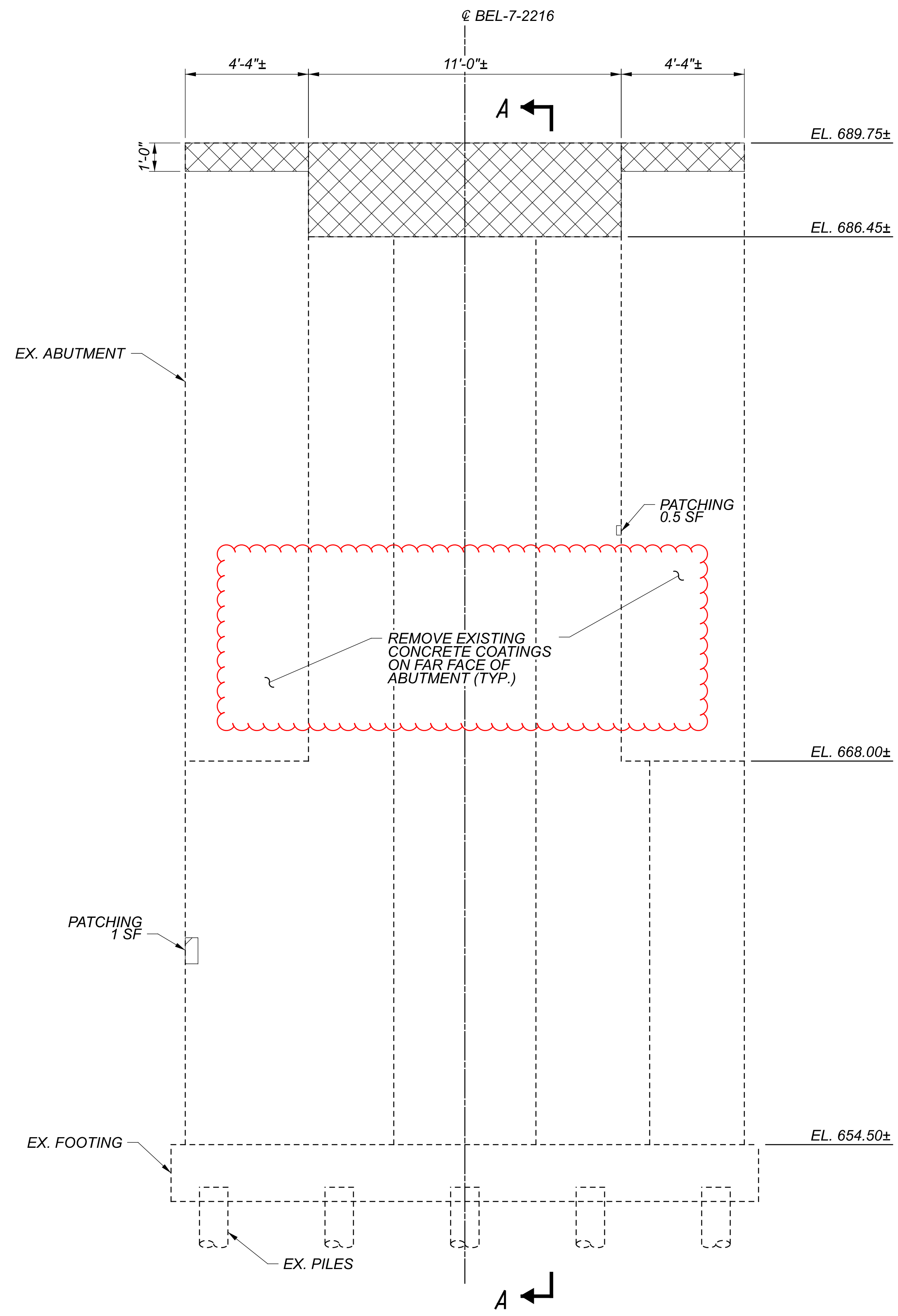
Stantec
 1500 LAKE SHORE DRIVE.
 SUITE 100
 COLUMBUS, OH 43204
 (614) 486-4383

DESIGNER CHECKER
 BSM EDA

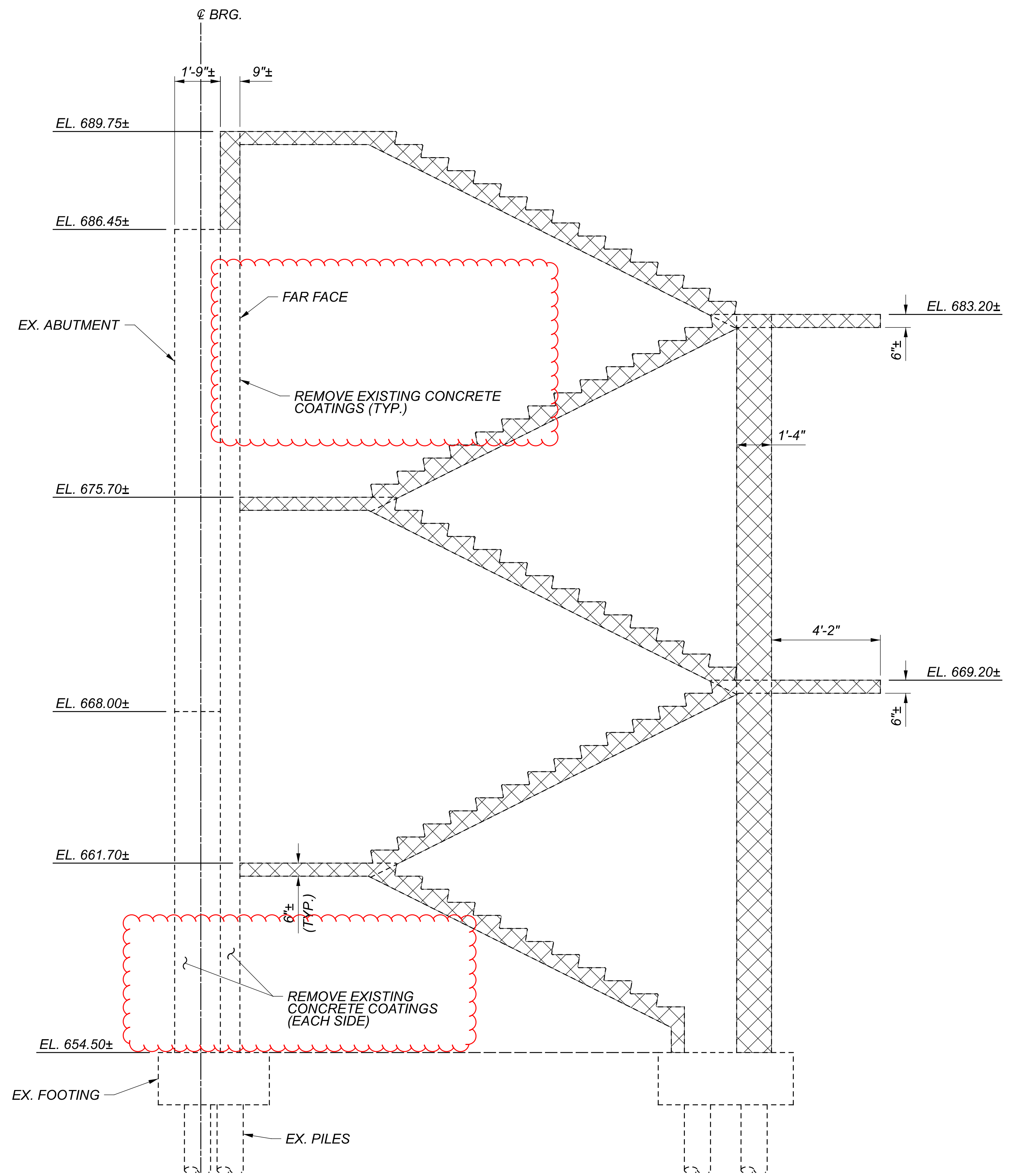
REVIEWER
 MRS 07-10-24

PROJECT ID
 114382

SUBSET	TOTAL
4	29
SHEET	TOTAL
P.37	69




ELEVATION
(LOOKING EAST)



SECTION A-A

 DENOTES PORTION OF STRUCTURE TO BE REMOVED

SFN	0700630
DESIGN AGENCY	
DESIGNER	BSM
CHECKER	EDA
REVIEWER	MRS 07-10-24
PROJECT ID	114382
SUBSET	7
TOTAL	29
SHEET	P.40
TOTAL	69