

STATE OF OHIO  
DEPARTMENT OF TRANSPORTATION

# BUT-122D-0.59L

CITY OF MIDDLETOWN  
BUTLER COUNTY

**PROJECT DESCRIPTION**

REHABILITATION OF A BRIDGE CARRYING STATE ROUTE 122D OVER UNIVERSITY BLVD. IN THE CITY OF MIDDLETOWN BY REPLACING AND REFURBISHING BEARINGS, ABUTMENT MODIFICATIONS, AND REPLACING THE EXPANSION JOINTS. THE PROJECT WILL ALSO TRIM AND PAINT THE BEAM ENDS. RESURFACING OF THE APPROACH PAVEMENT WILL BE COMPLETED AS PART OF THIS PROJECT.

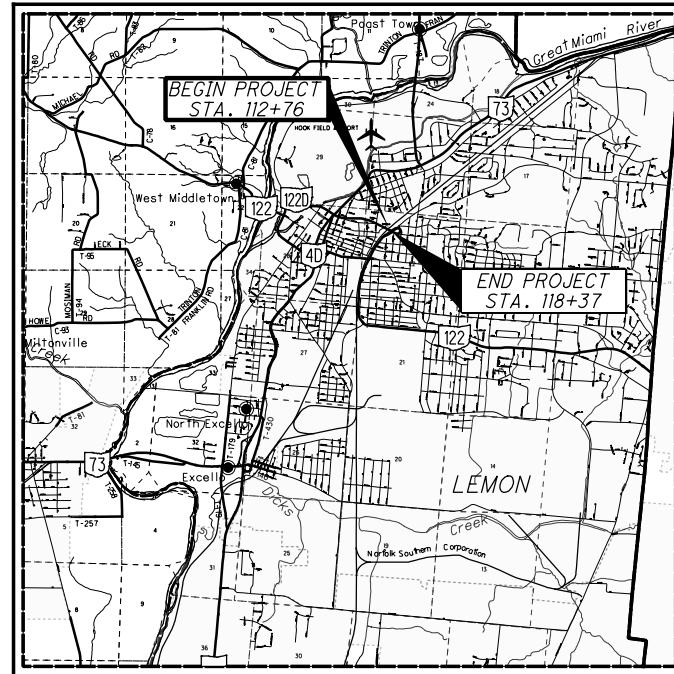
**EARTH DISTURBED AREAS**

PROJECT EARTH DISTURBED AREA: N/A\*  
ESTIMATED CONTRACTOR EARTH DISTURBED AREA: N/A\*  
NOTICE OF INTENT EARTH DISTURBED AREA: N/A\*

\*MAINTENANCE PROJECT

**2019 SPECIFICATIONS**

THE STANDARD SPECIFICATIONS OF THE STATE OF OHIO, DEPARTMENT OF TRANSPORTATION, INCLUDING SUPPLEMENTAL SPECIFICATIONS LISTED IN THE PLANS AND CHANGES LISTED IN THE PROPOSAL SHALL GOVERN THIS IMPROVEMENT.



**LOCATION MAP**

LATITUDE: N39°31'01.42" LONGITUDE: W84°23'16.88"



PORTION TO BE IMPROVED	
INTERSTATE HIGHWAY	
FEDERAL ROUTES	
STATE ROUTES	
COUNTY & TOWNSHIP ROADS	
OTHER ROADS	

**DESIGN DESIGNATION**

CURRENT ADT (2021)	4,900
DESIGN YEAR ADT (2033)	4,900
DESIGN HOURLY VOLUME (2033)	450
DIRECTIONAL DISTRIBUTION	0.50
TRUCKS (24 HOUR B&C)	0.09
DESIGN SPEED	35 MPH
LEGAL SPEED	35 MPH
DESIGN FUNCTIONAL CLASSIFICATION:	
03 PRINCIPAL ARTERIAL (URBAN)	
NHS PROJECT	NO

**DESIGN EXCEPTIONS**

NONE REQUIRED

**UNDERGROUND UTILITIES**  
Contact Two Working Days  
Before You Dig

**OHIO811.org**  
Before You Dig

OHIO811, 8-1-1, or 1-800-362-2764  
(Non-members must be called directly)

PLAN PREPARED BY:  
OHIO DEPARTMENT OF TRANSPORTATION  
DISTRICT 8 PRODUCTION - BRIDGE OFFICE  
505 SOUTH S.R. 741  
LEBANON, OHIO 45036

**INDEX OF SHEETS:**

TITLE SHEET	1
TYPICAL SECTIONS	2-3
GENERAL NOTES	4
MAINTENANCE OF TRAFFIC NOTES	5
MAINTENANCE OF TRAFFIC PLAN	6-7
GENERAL SUMMARY	8
PAVEMENT CALCULATIONS	9
PAVEMENT MARKING PLAN	10
PLAN & PROFILE	11
CURB RAMP DETAILS	12
STRUCTURES OVER 20 FOOT SPAN	
BUT-122D-0059L	13-30

ENGINEERS SEAL	STANDARD CONSTRUCTION DRAWINGS	SUPPLEMENTAL SPECIFICATIONS
	MT-95.30 4/19/19 EXJ-4-87 1/19/18	800-2020 7/17/20
	MT-95.31 7/19/19 GSD-1-19 1/18/19	821 4/20/12
	MT-95.32 4/19/19 RB-1-55 7/19/13	847 1/20/17
	MT-97.10 4/19/19	921 4/20/12
	MT-98.28 1/17/20	
	MT-98.30 7/19/19	
	MT-105.10 7/19/13	
	MT-110.10 7/19/13 MT-95.40 1/17/20	
	MT-125.00 1/17/20 MT-98.22 1/17/20	
	TC-41.20 10/18/13	
	TC-41.30 10/18/13	
	TC-42.20 10/18/13	
	TC-52.10 10/18/13	
	TC-52.20 7/20/18	

SIGNED: \_\_\_\_\_  
DATE: \_\_\_\_\_

I HEREBY APPROVE THESE PLANS AND DECLARE THAT THE MAKING OF THIS IMPROVEMENT WILL NOT REQUIRE THE CLOSING TO TRAFFIC OF THE HIGHWAY EXCEPT AS NOTED ON SHEET -, AND THAT PROVISIONS FOR THE MAINTENANCE AND SAFETY OF TRAFFIC WILL BE AS SET FORTH ON THE PLANS AND ESTIMATES

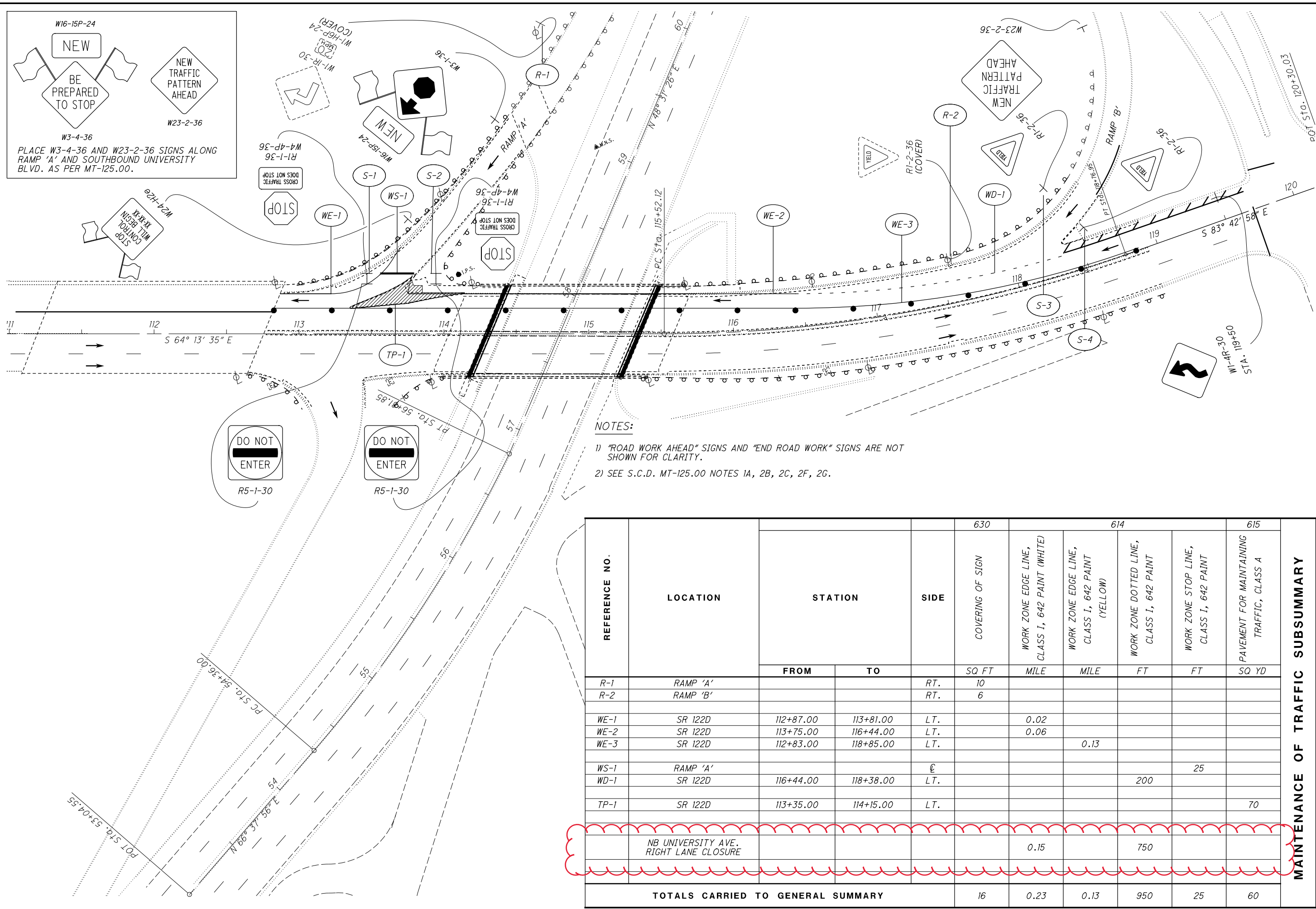
APPROVED \_\_\_\_\_  
DATE \_\_\_\_\_ DISTRICT DEPUTY DIRECTOR

APPROVED \_\_\_\_\_  
DATE \_\_\_\_\_ DIRECTOR, DEPARTMENT OF TRANSPORTATION

FEDERAL PROJECT NO.	<b>E161 (447)</b>
CONSTRUCTION PROJECT NO.	<b>100832</b>
RAILROAD INVOLVEMENT	<b>NONE</b>
PID NO.	<b>100832</b>
BUT-122D-0.59L	<b>1</b> 30

I:\ProjectData\BUT-122D-0.59L\Design\Roadway\Sheets\100832\_GT001.dgn Sheet 10/9/2020 12:07:12 PM gfreeman

I:\ProjectData\BUT\100832\_BUT-122D-059\Design\M01\Sheets\00832\_MP002.dgn Design 10/9/2020 12:06:03 PM gFreeman



W16-15P-24  
NEW  
BE PREPARED TO STOP  
W3-4-36  
NEW TRAFFIC PATTERN AHEAD  
W23-2-36  
PLACE W3-4-36 AND W23-2-36 SIGNS ALONG RAMP 'A' AND SOUTHBOUND UNIVERSITY BLVD. AS PER MT-125.00.

**NOTES:**

- 1) "ROAD WORK AHEAD" SIGNS AND "END ROAD WORK" SIGNS ARE NOT SHOWN FOR CLARITY.
- 2) SEE S.C.D. MT-125.00 NOTES 1A, 2B, 2C, 2F, 2G.

REFERENCE NO.	LOCATION	STATION		SIDE	630					614					615	MAINTENANCE OF TRAFFIC SUBSUMMARY
		FROM	TO		COVERING OF SIGN	WORK ZONE EDGE LINE, CLASS I, 642 PAINT (WHITE)	WORK ZONE EDGE LINE, CLASS I, 642 PAINT (YELLOW)	WORK ZONE DOTTED LINE, CLASS I, 642 PAINT	WORK ZONE STOP LINE, CLASS I, 642 PAINT	PAVEMENT FOR MAINTAINING TRAFFIC, CLASS A	SQ FT	MILE	MILE	FT	FT	
R-1	RAMP 'A'			RT.	10											
R-2	RAMP 'B'			RT.	6											
WE-1	SR 122D	112+87.00	113+81.00	LT.		0.02										
WE-2	SR 122D	113+75.00	116+44.00	LT.		0.06										
WE-3	SR 122D	112+83.00	118+85.00	LT.			0.13									
WS-1	RAMP 'A'			℄									25			
WD-1	SR 122D	116+44.00	118+38.00	LT.				200								
TP-1	SR 122D	113+35.00	114+15.00	LT.										70		
	NB UNIVERSITY AVE. RIGHT LANE CLOSURE					0.15		750								
<b>TOTALS CARRIED TO GENERAL SUMMARY</b>					16	0.23	0.13	950	25	60						

CALCULATED  
XXX  
CHECKED  
XXX

0 30 60  
15  
HORIZONTAL  
SCALE IN FEET

**MAINTENANCE OF TRAFFIC PHASE TWO**

**BUT-122D-0059L**

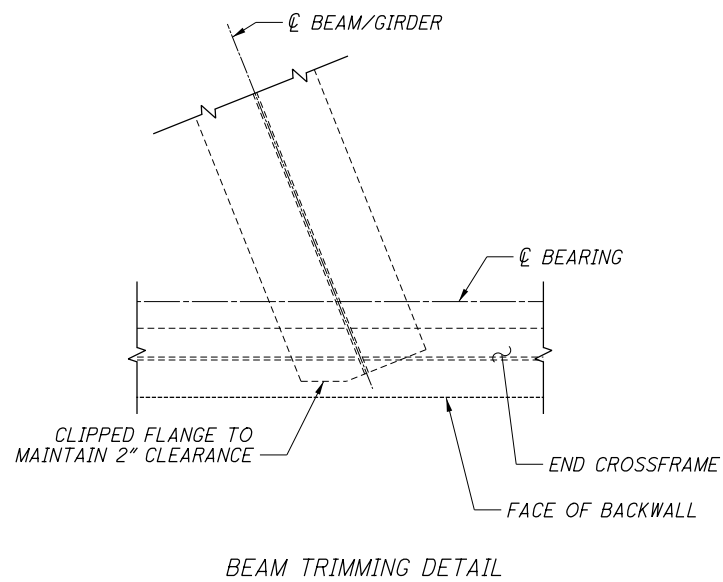
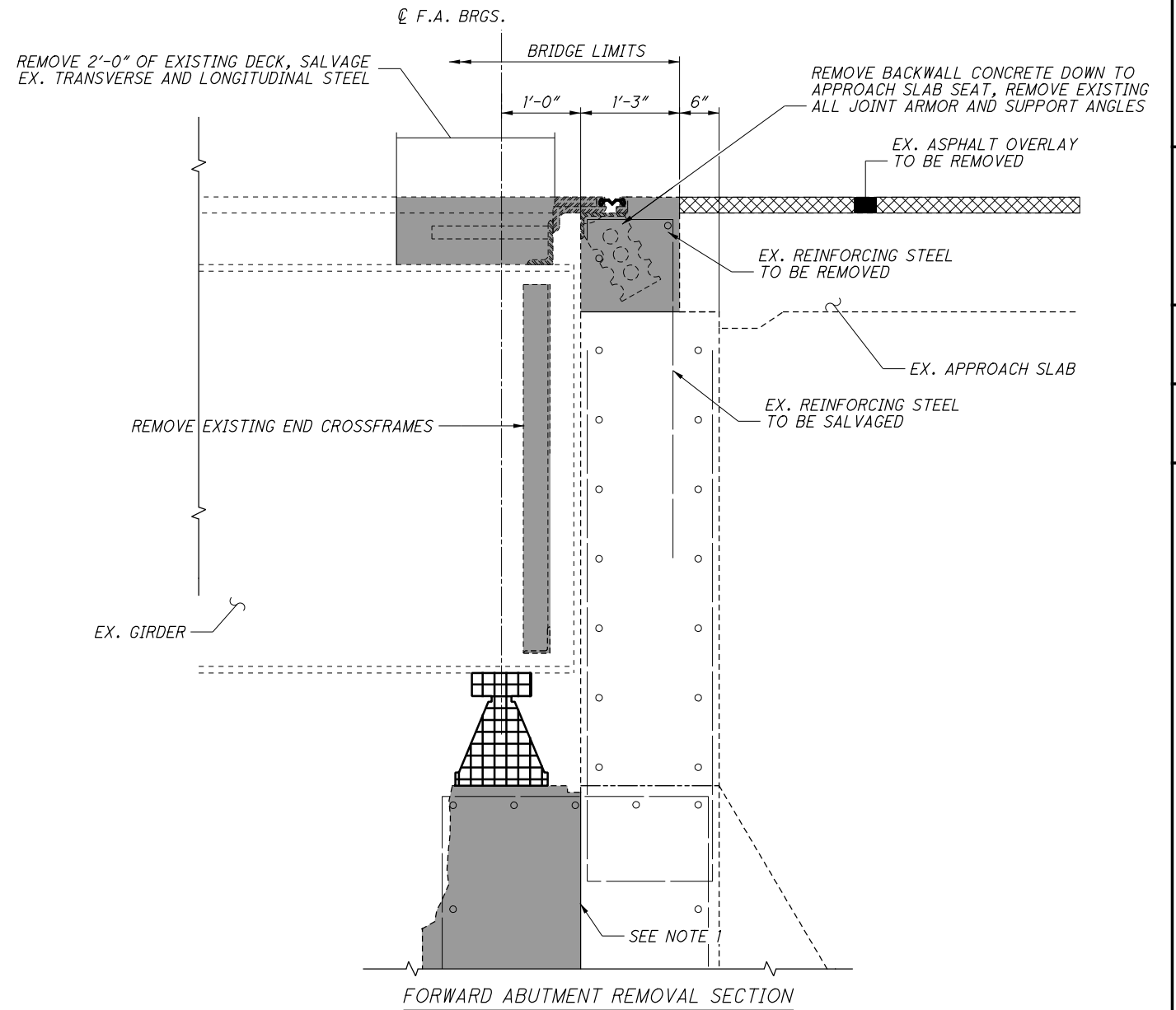
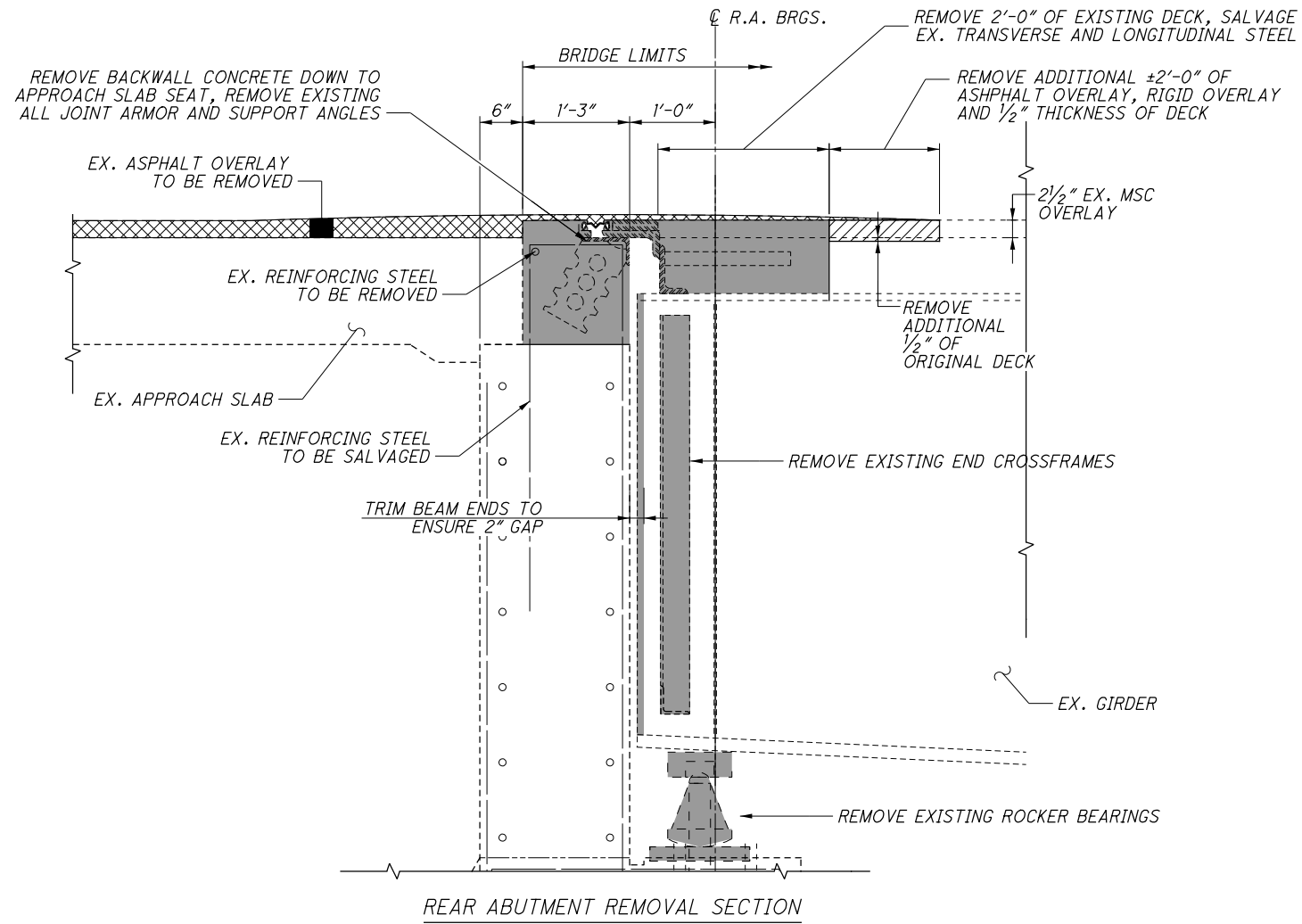
SHEET NUM.													PART.	ITEM	ITEM	GRAND	UNIT	DESCRIPTION	SEE SHEET NO.
7	9	10	11	13									01/SX2/BR	EXT	TOTAL				
													LUMP	201	11000	LS	CLEARING AND GRUBBING		
	258												258	202	23500	258	SY	WEARING COURSE REMOVED	
				600									600	202	30000	600	SF	WALK REMOVED	
			70										70	202	30600	70	SY	CONCRETE MEDIAN REMOVED	
	25												25	202	32500	25	FT	CURB AND GUTTER REMOVED	
				600									600	608	10000	600	SF	4" CONCRETE WALK	
	245												245	608	52000	245	SF	CURB RAMP	
	25												25	609	18001	25	FT	COMBINATION CURB AND GUTTER, TYPE 3, AS PER PLAN	12
			70										70	609	72000	70	SY	CONCRETE MEDIAN	
				2									2	611	99654	2	EACH	MANHOLE ADJUSTED TO GRADE	
<b>EROSION CONTROL</b>																			
													1,000	832	30000	1,000	EACH	EROSION CONTROL	
<b>PAVEMENT</b>																			
	10												10	253	01001	10	SY	PAVEMENT REPAIR, AS PER PLAN	12
	2,541												2,541	254	01000	2,541	SY	PAVEMENT PLANING, ASPHALT CONCRETE (T=1.5")	
	252												252	407	20000	252	GAL	NON-TRACKING TACK COAT	
	121												121	441	10000	121	CY	ASPHALT CONCRETE SURFACE COURSE, TYPE 1, (446), PG64-22	
<b>TRAFFIC CONTROL</b>																			
				104									104	630	03100	104	FT	GROUND MOUNTED SUPPORT, NO. 3 POST	
				54									54	630	80100	54	SF	SIGN, FLAT SHEET	
16													16	630	83000	16	SF	COVERING OF SIGN	
				4									4	630	84900	4	EACH	REMOVAL OF GROUND MOUNTED SIGN AND DISPOSAL	
				4									4	630	86002	4	EACH	REMOVAL OF GROUND MOUNTED POST SUPPORT AND DISPOSAL	
		0.02											0.02	642	00200	0.02	MILE	LANE LINE, 4", TYPE 1	
		100											100	642	00400	100	FT	CHANNELIZING LINE, 8", TYPE 1	
		40											40	642	00700	40	FT	TRANSVERSE/DIAGONAL LINE, TYPE 1	
		245											245	642	30000	245	FT	REMOVAL OF PAVEMENT MARKING	
		0.1											0.1	644	00200	0.1	MILE	LANE LINE, 4"	
		710											710	644	00400	710	FT	CHANNELIZING LINE, 8"	
		40											40	644	00600	40	FT	CROSSWALK LINE	
		270											270	644	00700	270	FT	TRANSVERSE/DIAGONAL LINE	
		1,240											1,240	644	30000	1,240	FT	REMOVAL OF PAVEMENT MARKING	
<b>STRUCTURE REPAIR (BUT-122D-0.59)</b>																			
<b>MAINTENANCE OF TRAFFIC</b>																			
	0.36												0.36	614	22100	0.36	MILE	WORK ZONE EDGE LINE, CLASS I, 4", 642 PAINT	
	950												950	614	24200	950	FT	WORK ZONE DOTTED LINE, CLASS I, 4", 642 PAINT	
	25												25	614	26200	25	FT	WORK ZONE STOP LINE, CLASS I, 642 PAINT	
	2												2	614	12384	2	EACH	WORK ZONE IMPACT ATTENUATOR, 24" WIDE HAZARDS, (BIDIRECTIONAL)	
	340												340	622	41100	340	FT	PORTABLE BARRIER, UNANCHORED	
	70												70	615	20000	70	SY	PAVEMENT FOR MAINTAINING TRAFFIC, CLASS A	
<b>INCIDENTALS</b>																			
	LUMP												LUMP	614	11000	LS		MAINTAINING TRAFFIC	
	LUMP												LUMP	623	10000	LS		CONSTRUCTION LAYOUT STAKES AND SURVEYING	
	LUMP												LUMP	624	10000	LS		MOBILIZATION	

I:\ProjectData\BUT-122D-0.59\Design\Roadway\Sheet 10/9/2020 12:18:19 PM gfreeman




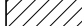
CALCULATED  
GTF  
CHECKED  
GAT  
**GENERAL SUMMARY**  
**BUT - 122D - 0.59L**  
8  
30

ESTIMATED QUANTITIES - STRUCTURE No.: BUT-122D-0059L									
ITEM	EXTENSION	TOTAL	UNIT	DESCRIPTION	ABUT.	PIERS	SUPER.	GEN.	SHEET #
202	11201	LS	LS	PORTIONS OF STRUCTURE REMOVED, AS PER PLAN				LUMP	14
509	10001	5178	LB	EPOXY COATED REINFORCING STEEL, AS PER PLAN	5078		100		15
510	10001	332	EA	DOWEL HOLES WITH NONSHRINK, NONMETALLIC GROUT, AS PER PLAN					
511	53014	11	CY	CLASS QC3 CONCRETE, MISC.: SUPERSTRUCTURE CONCRETE WITH QC/QA, AS PER PLAN			11		15
511	53014	29	CY	CLASS QC3 CONCRETE, MISC.: SUBSTRUCTURE CONCRETE WITH QC/QA, AS PER PLAN			29		15
512	10400	750	SY	TREATING OF CONCRETE BRIDGE DECK WITH SRS			750		
513	10201	5400	LB	STRUCTURAL STEEL MEMBERS, LEVEL UF, AS PER PLAN			5,400		15
513	21000	8	EACH	TRIMMING OF BEAM END			5		
514	00051	1825	SF	SURFACE PREPARATION OF EXISTING STRUCTURAL STEEL, AS PER PLAN			1825		14
514	27700	1825	SF	FIELD PAINTING, MISC.: FIELD PAINTING OF EXISTING STRUCTURAL STEEL (TWO COAT)			1825		14
514	00504	8	MNHR	GRINDING FINS, TEARS, SLIVERS ON EXISTING STRUCTURAL STEEL			8		14
516	11210	131.45	FT	STRUCTURAL EXPANSION JOINT INCLUDING ELASTOMERIC STRIP SEAL			131.45		
516	13200	36	SF	1/2" PREFORMED EXPANSION JOINT FILLER	36				
516	13600	4	SF	1" PREFORMED EXPANSION JOINT FILLER	4				
516	43100	8	EACH	ELASTOMERIC BEARING WITH INTERNAL LAMINATES ONLY (NEOPRENE) (T=2.50")	8				
516	45305	8	EACH	REFURBISH BEARING DEVICE, AS PER PLAN	8				15
516	47001	LS	LS	JACKING AND TEMPORARY SUPPORT OF SUPERSTRUCTURE, AS PER PLAN				LUMP	15
519	11101	84	SF	PATCHING CONCRETE STRUCTURE, AS PER PLAN	84				15
847	10000	15	SY	MICRO SILICA MODIFIED CONCRETE OVERLAY (T=2.5")			15		
847	20000	6	CY	MICRO SILICA MODIFIED CONCRETE OVERLAY (VARIABLE THICKNESS), MATERIAL ONLY			6		
847	30000	LS	LS	TEST SLAB				LUMP	
847	30300	15	SY	WEARING COURSE REMOVED, ASPHALT			15		
847	30400	15	SY	EXISTING CONCRETE OVERLAY REMOVED (D=0.5")			15		
847	50000	15	SY	HAND CHIPPING			15		

I:\Project+Data\BUT-122D-0.59\Design\Structures\BUT122\_0059C\_Sheets\122\_0059C\_SV003.dgn Sheet 10/9/2020 12:23:46 PM gfreeman



LEGEND

-  ITEM 202 - PORTIONS OF STRUCTURE REMOVED, OVER 20' SPAN
-  ITEM 202 - WEARING COURSE REMOVED
-  ITEM 516 - REFURBISHING BEARING DEVICES, AS PER PLAN
-  ITEM 847 - EXISTING CONCRETE OVERLAY REMOVED



NOTES

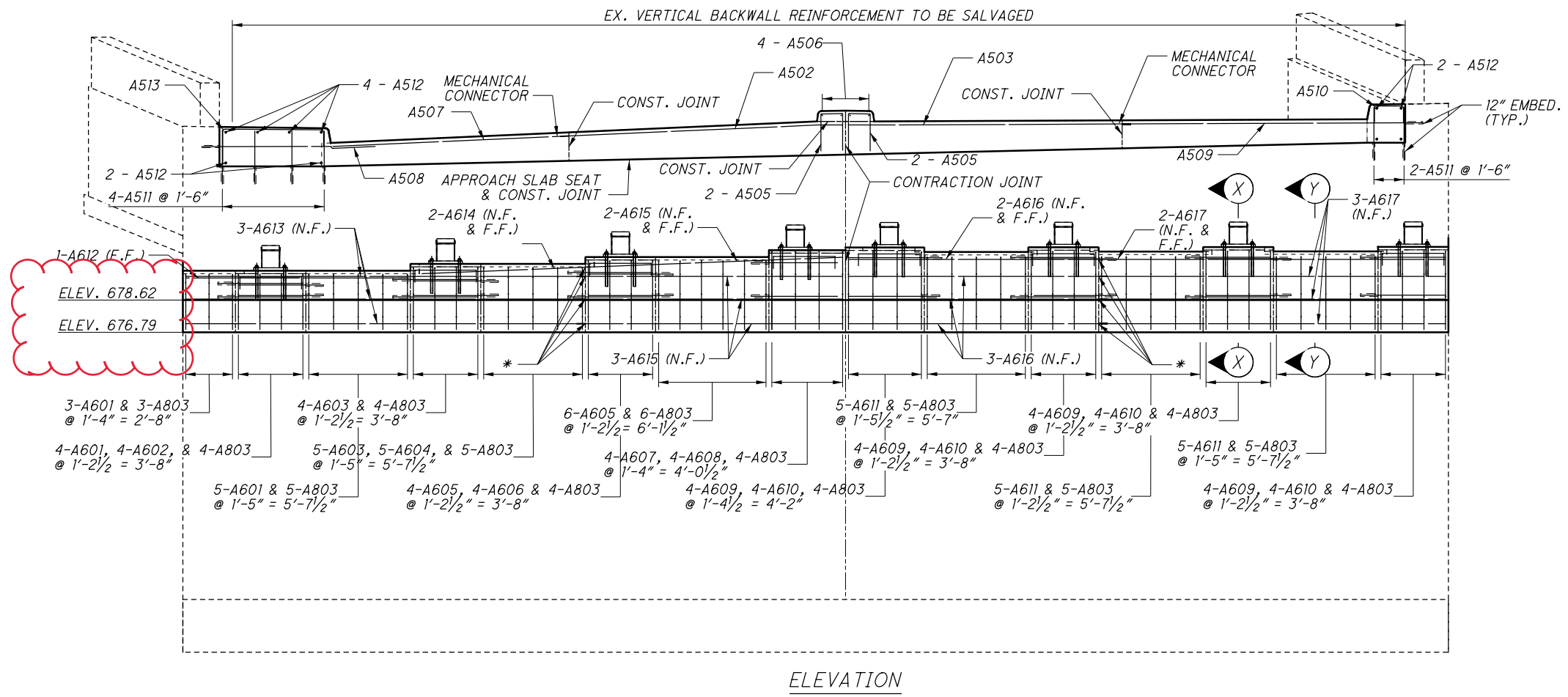
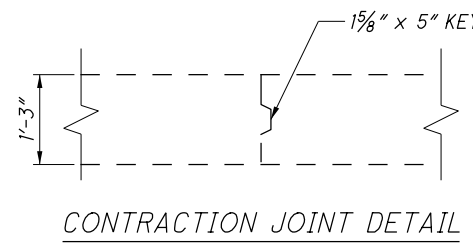
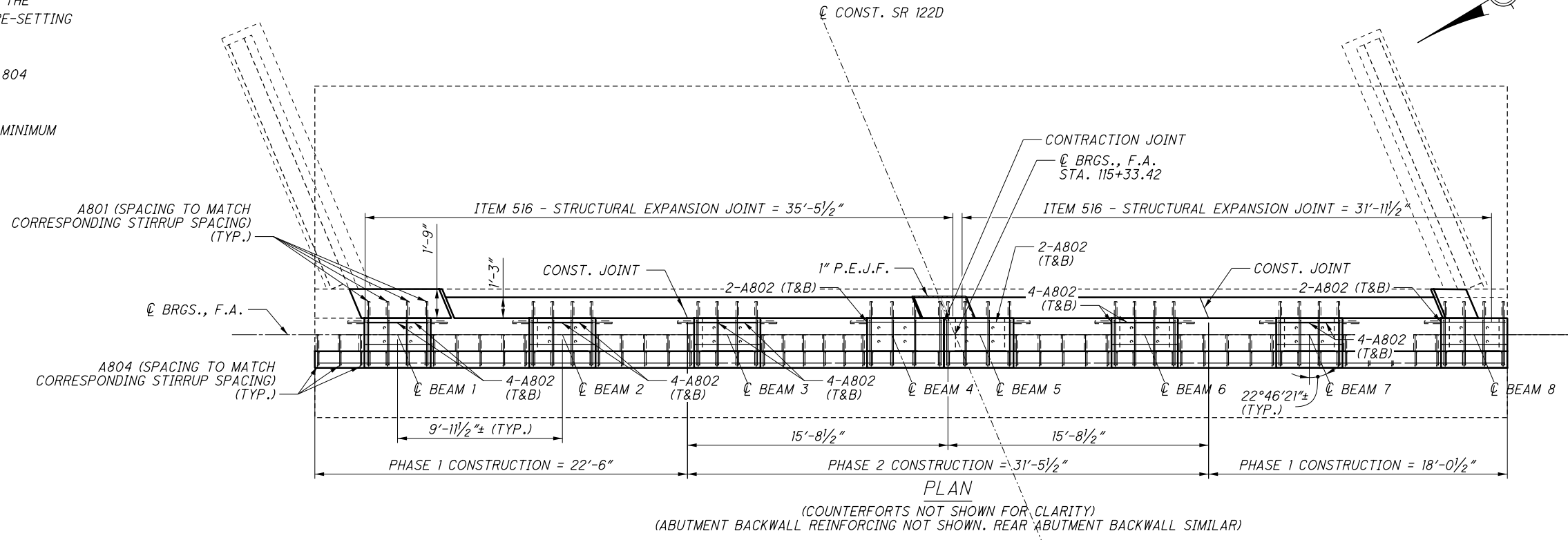
IF CONTRACTOR SHALL TAKE CARE NOT TO DAMAGE REINFORCING STEEL EXTENDING FROM COUNTERFORTS INTO ABUTMENT SEAT.

**NOTES:**

- 1) ACCURATELY PLACE REINFORCING STEEL IN THE VICINITY OF THE BRIDGE SEAT TO AVOID INTERFERENCE WITH THE DRILLING OF BEARING ANCHOR HOLES OR THE PRE-SETTING OF BEARING ANCHORS.
- 2) PROVIDE 44" LAP SPLICES FOR A802, A803, & A804 REINFORCING BARS.
- 3) ALL DOWLED REINFORCING STEEL SHALL HAVE A MINIMUM EMBEDMENT LENGTH OF 12".
- 3) FOR SECTIONS X-X AND Y-Y SEE SHEET 23.

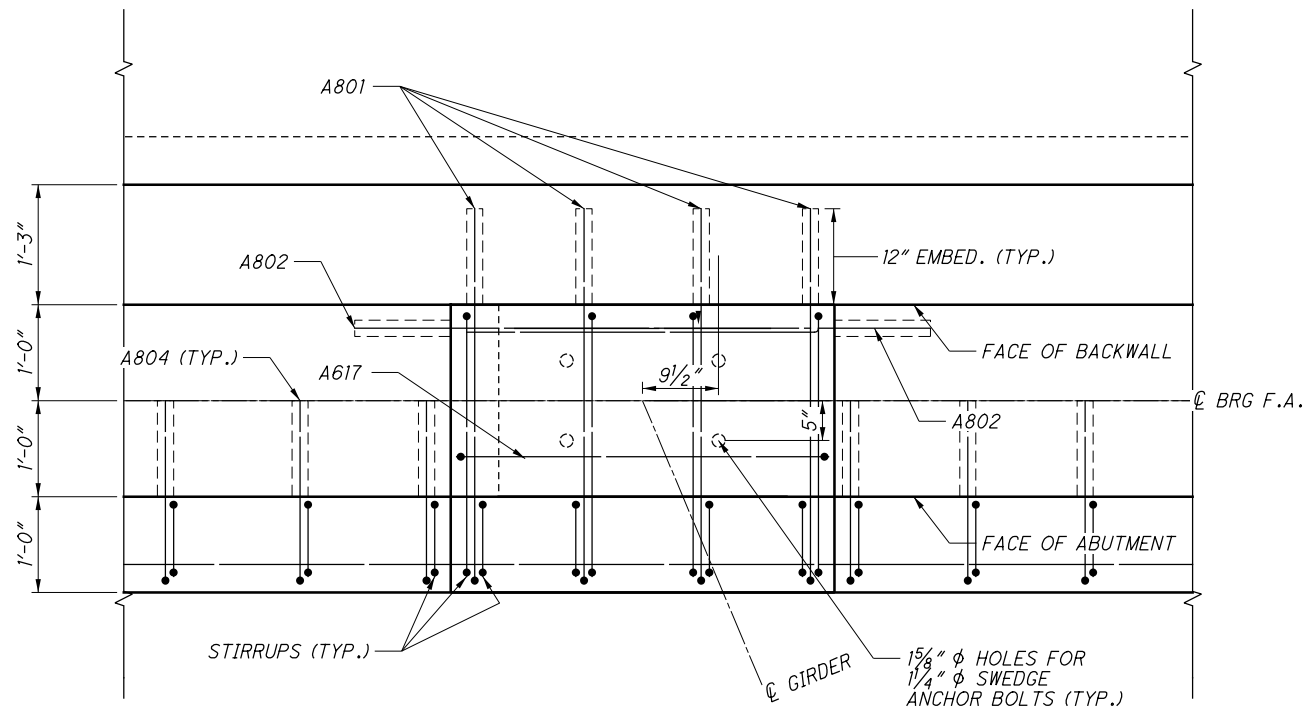
\* = MECHANICAL CONNECTOR

FORWARD BEARING SEAT ELEVATIONS	
BEAM No.	ELEVATION
1	680.30
2	680.72
3	681.13
4	681.51
5	681.67
6	681.70
7	681.68
8	681.63

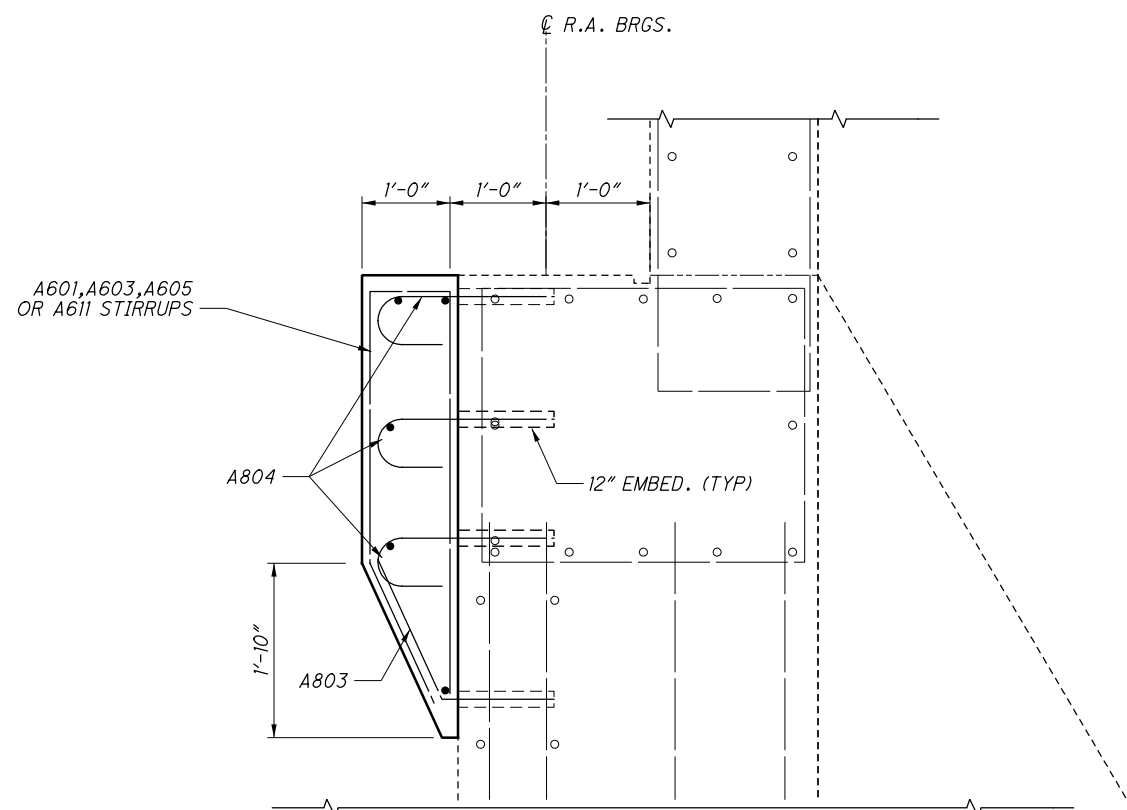


I:\ProjectData\BUT\100832\_BUT-122D-0.59\_Design\Structures\BUT122-0059C\_Sheets\122\_0059C\_SF001.dgn Sheet 10/9/2020 12:37:54 PM gfreeman

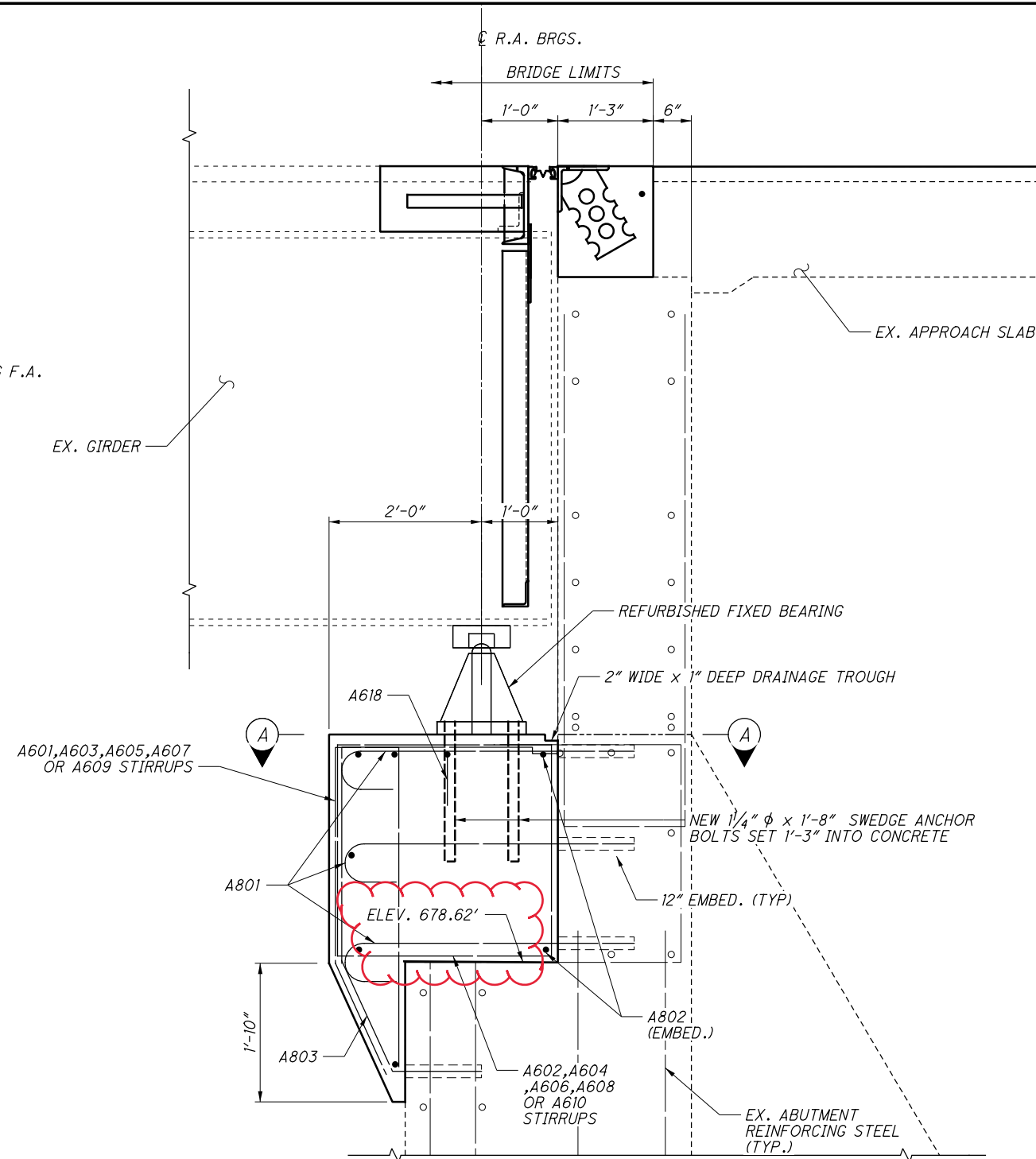
I:\Project+Data\BUT-122D-0.59\Design\Structures\BUT122\_0059C\_Sheets\122\_0059C\_SF002.dgn Sheet 10/9/2020 12:43:26 PM gfreeman



FORWARD ABUTMENT CONSTRUCTION VIEW A-A



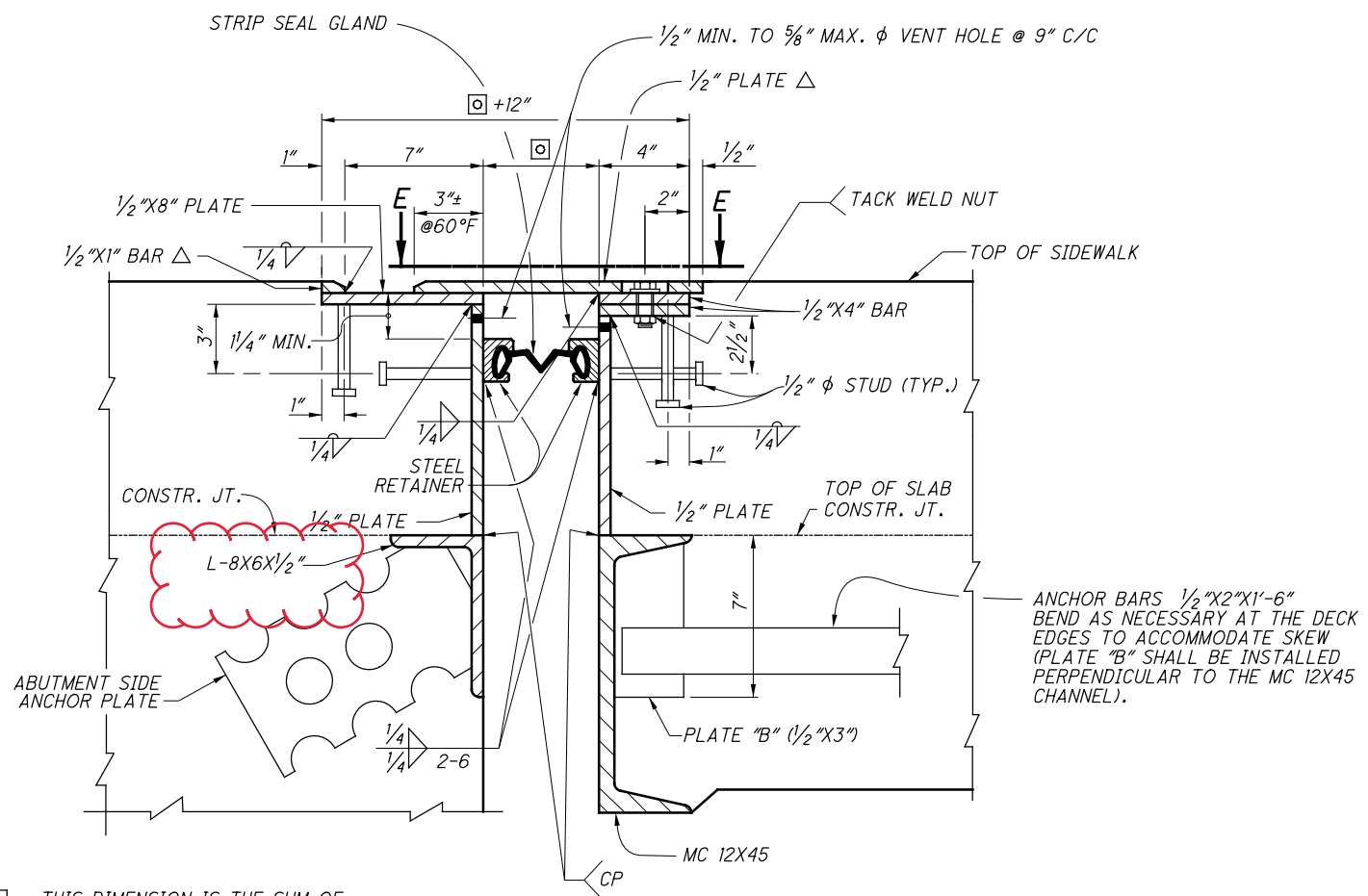
FORWARD ABUTMENT CONSTRUCTION SECTION Y-Y



FORWARD ABUTMENT CONSTRUCTION SECTION X-X

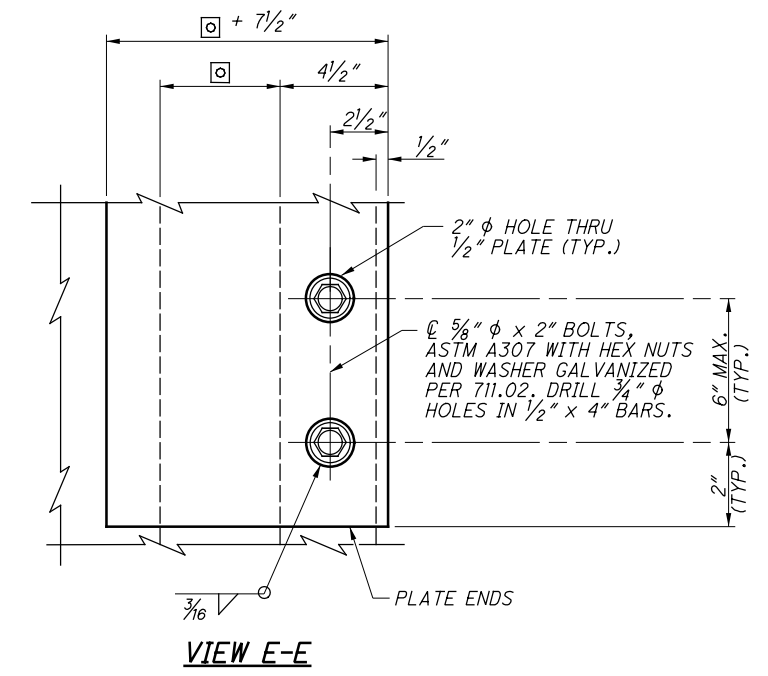
DESIGNED		DRAWN	REVIEWED	DATE	DESIGN AGENCY
GTF		GTF	CAH	MM/DD/YY	OHIO DEPT OF TRANSPORTATION
CHECKED		REVIS	CAH	STRUCTURE FILE NUMBER	DISTRICT 8 - BRIDGE OFFICE
CAH		XXX	XXX	0902365	LEBANON, OH 45036
<b>FORWARD ABUTMENT DETAILS</b>					
BRIDGE No.: BUT-122D-0059L					
SR 122D OVER UNIVERSITY BLVD.					
<b>BUT-122D-0.59L</b>					
PID No. 100832					
11 / 18					
23 / 30					

I:\ProjectData\BUT-122D-0.59\Design\Structures\BUT122-0059C\_Sheets\122-0059C\_SX002.dgn Sheet 10/9/2020 12:46:11 PM gfreeman

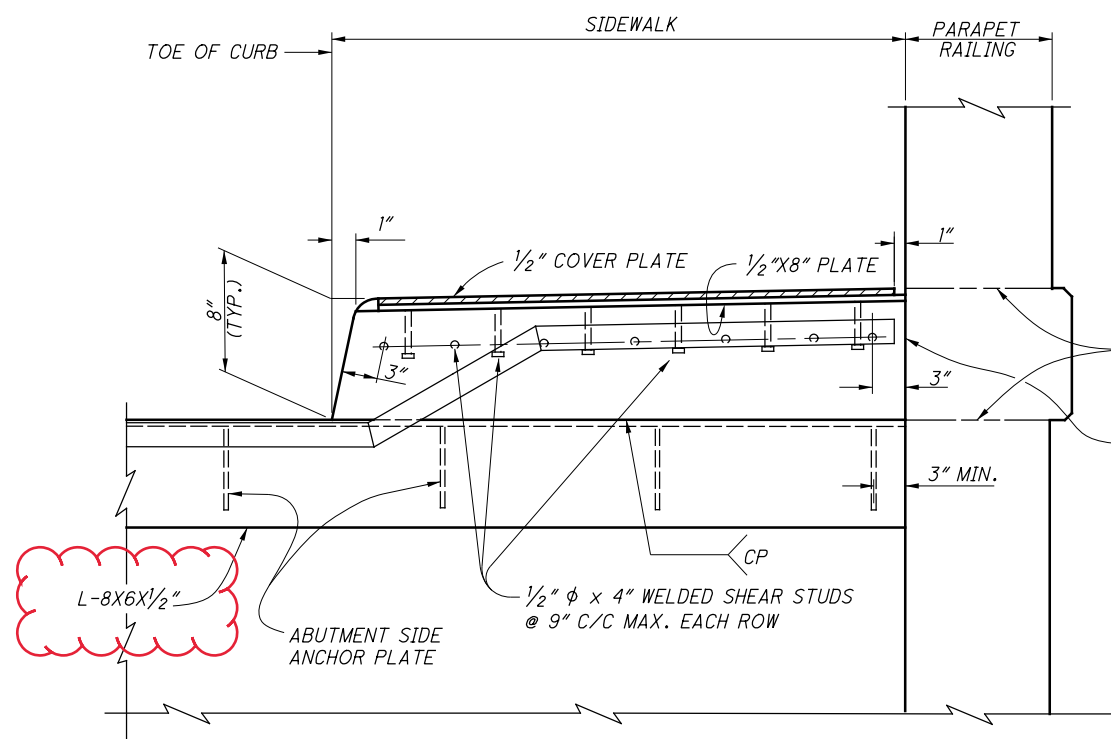


**SECTION Y-Y**

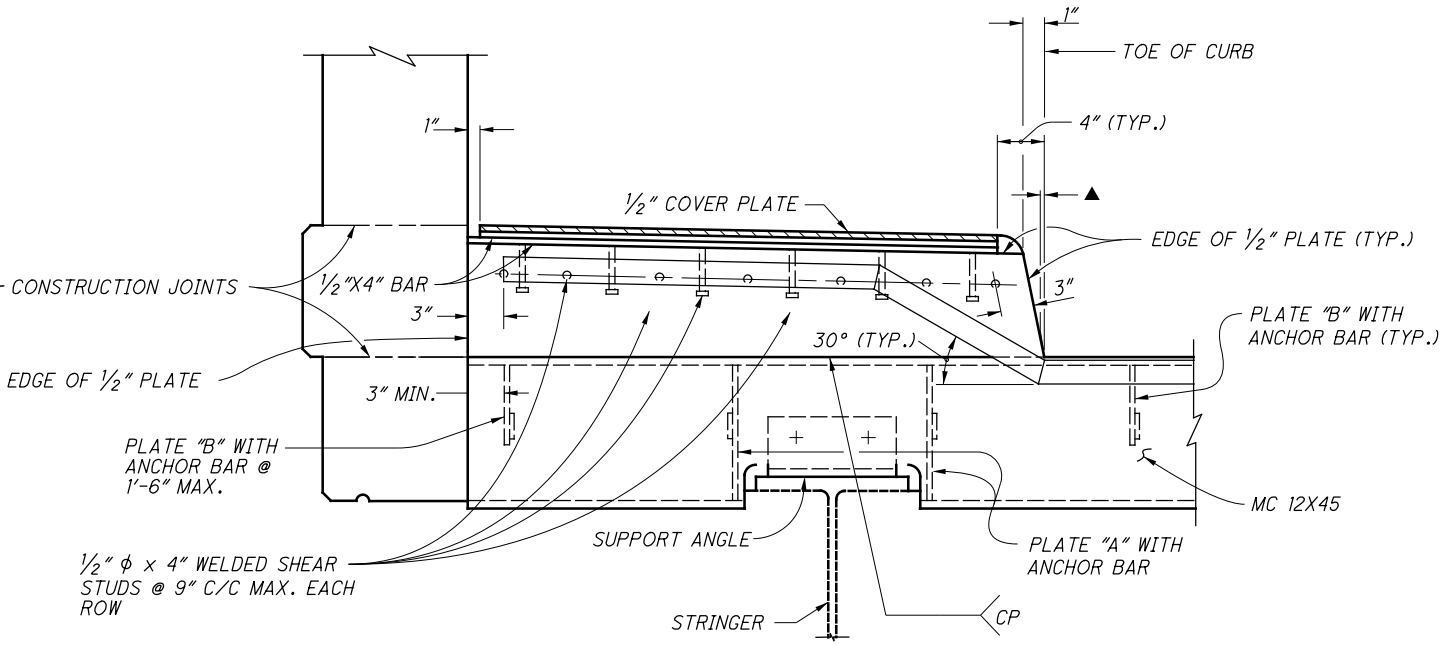
△ - PROVIDE A 1/2" HORIZONTAL x 1/4" VERTICAL BEVEL AT THE EXPOSED EDGE OF THE 1/2" COVER PLATE AND 1/2" X 1" BAR



**VIEW E-E**



**SECTION F-F**



**SECTION G-G**

▲ - 0" MIN. TO 1/2" MAX. AT BREAKPOINT IN RETAINER DIMENSION WILL ONLY APPLY TO THE SIDE OF JOINT ASSEMBLY WHICH IS NEAREST TO THE CURB LINE (SEE DETAIL "D" ABOVE).

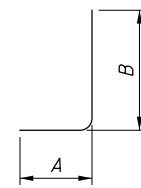
DESIGN AGENCY		OHIO DEPT OF TRANSPORTATION	
DATE		DISTRICT 8 - BRIDGE OFFICE	
REVIEWED		LEBANON, OH 45036	
CAH	MM/DD/YY	STRUCTURE FILE NUMBER	0902365
DRAWN	GTF	CHECKED	CAH
DESIGNED	GTF	REVISER	XXX
<b>EXPANSION JOINT DETAILS</b>			
BRIDGE No.: BUT-122D-0059L			
SR 122D OVER UNIVERSITY BLVD.			
<b>BUT-122D-0.59L</b>		<b>PID No. 100832</b>	
15 / 18		27	
		30	



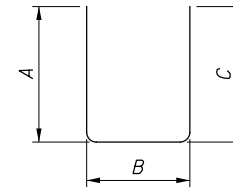
I:\Project+Data\BUT\100832\_BUT-122D-0.59\Design\Structures\BUT122\_0059C\Sheets\122\_0059C\_SL001.dgn Sheet 10/9/2020 12:50:44 PM gfreeman

MARK	NUMBER		LENGTH	WEIGHT	TYPE	DIMENSIONS					
	TOTAL					A	B	C	D	E	R
<b>SUBSTRUCTURE REINFORCING STEEL</b>											
# A501	1		17'-1"	18	STR						
A502	2		16'-0"	34	STR						
A503	1		15'-2"	16	STR						
# A504	1		18'-5"	19	STR						
A505	8		5'-2"	44	2	2'-1 1/4"	1'-2 3/4"	2'-1 1/4"			
A506	8		1'-0"	8	STR						
# A507	1		13'-0"	14	STR						
A508	4		9'-11"	40	STR						
# A509	1		17'-6"	18	STR						
A510	6		2'-11"	18	2	0'-10 3/4"	1'-5"	0'-10 3/4"			
A511	36		3'-0"	113	STR						
A512	20		1'-6"	32	STR						
A513	6		6'-7"	41	2	0'-10 3/4"	5'-0 3/4"	0'-10 3/4"			
A601	12		6'-10"	123	12	0'-8"	1'-5 1/2"	1'-8 3/4"	0'-8"	3'-2"	
A602	4		8'-9"	53	3	2'-7 1/2"	1'-4"				
A603	9		7'-7"	103	12	0'-8"	1'-5 1/2"	2'-1 1/4"	0'-8"	3'-6 3/4"	
A604	4		9'-7"	58	3	2'-7 1/2"	1'-8 3/4"				
A605	10		8'-5"	126	12	0'-8"	1'-5 1/2"	2'-6"	0'-8"	3'-11 1/2"	
A606	4		10'-4"	62	3	2'-7 1/2"	2'-1 1/2"				
A607	4		9'-2"	55	12	0'-8"	1'-5 1/2"	2'-10 3/4"	0'-8"	4'-4"	
A608	4		11'-2"	67	3	2'-7 1/2"	2'-6"				
A609	16		9'-6"	228	12	0'-8"	1'-5 1/2"	3'-0 3/4"	0'-8"	4'-6"	
A610	16		11'-5"	274	3	2'-7 1/2"	2'-8"				
A611	16		9'-0"	216	12	0'-8"	1'-5 1/2"	2'-9 1/2"	0'-8"	4'-3"	
A612	1		12'-7"	19	STR						
#A613	3		22'-9"	102	STR						
#A614	2		9'-9"	29	STR						
#A615	5		14'-8"	110	STR						
#A616	5		14'-3"	107	STR						
#A617	5		19'-9"	148	STR						
A618	8		4'-8"	56	2	0'-8"	3'-8"	0'-8"			
A801	96		4'-8"	1196	16	3'-10"					
A802	26		4'-10"	335	STR						
A803	66		2'-8"	470	19	1'-7 1/4"	0'-5 3/4"	1'-0 3/4"			
A804	102		2'-8"	726	16	1'-10"					
SUB-TOTAL			5,078								

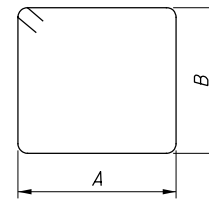
MARK	NUMBER		LENGTH	WEIGHT	TYPE	DIMENSIONS					
	TOTAL					A	B	C	D	E	R
<b>SUPERSTRUCTURE REINFORCING STEEL</b>											
S501	24		1'-8"	42	STR						
S502	12		4'-7"	58	5	1'-1"	0'-10 3/4"	0'-9 1/4"	0'-1 3/4"		
SUB-TOTAL			100								



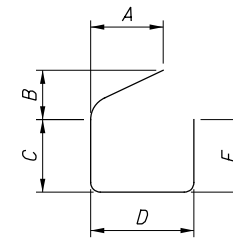
TYPE-1



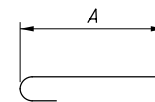
TYPE-2



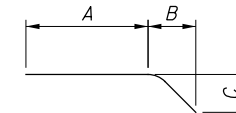
TYPE-3



TYPE-12



TYPE-16



TYPE-19

**NOTE:**

BAR MARKS WITH A (#) INDICATE THE USE OF MECHANICAL CONNECTORS. MECHANICAL CONNECTORS ARE INCLUDED IN THE TOTAL LENGTH OF THE REINFORCING BAR.

**MECHANICAL CONNECTORS**

MECHANICAL CONNECTORS SHALL BE CAPABLE OF DEVELOPING 125 PERCENT OF THE YIELD STRENGTH OF THE CONNECTED BARS. FOR CONNECTORS WITH THREADED BAR ENDS, IN ORDER TO OFFSET THE EFFECT OF AREA REDUCTION ON THE STRENGTH OF THE BAR AND STILL MEET THE REQUIREMENTS OF ASTM A615, USE THE NEXT LARGER DIAMETER BAR OR A HIGHER GRADE OF STEEL BAR FOR THE REINFORCING RECEIVING THE THREADS.

DESIGN AGENCY  
OHIO DEPT OF TRANSPORTATION  
DISTRICT 8 - BRIDGE OFFICE  
LEBANON, OH 45036

DATE  
MM/DD/YY  
REVIEWED  
CAH  
STRUCTURE FILE NUMBER  
0902365

DRAWN  
GTF  
CHECKED  
CAH  
REVISION  
XXX

**SUPERSTRUCTURE DETAILS**  
BRIDGE No.: BUT-122D-0059L  
SR 122D OVER UNIVERSITY BLVD.

**BUT - 122D - 0.59L**  
PID No. 100832