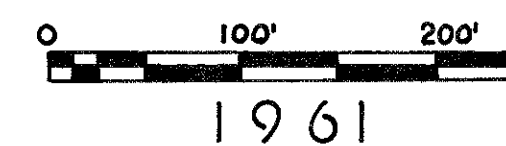


# LOCATION PLAN

## BUT-129-9.08

## BUTLER COUNTY



RECEIVED - June 7th 1961 AT 9:15 AM - RECORDED - June 8th 1961

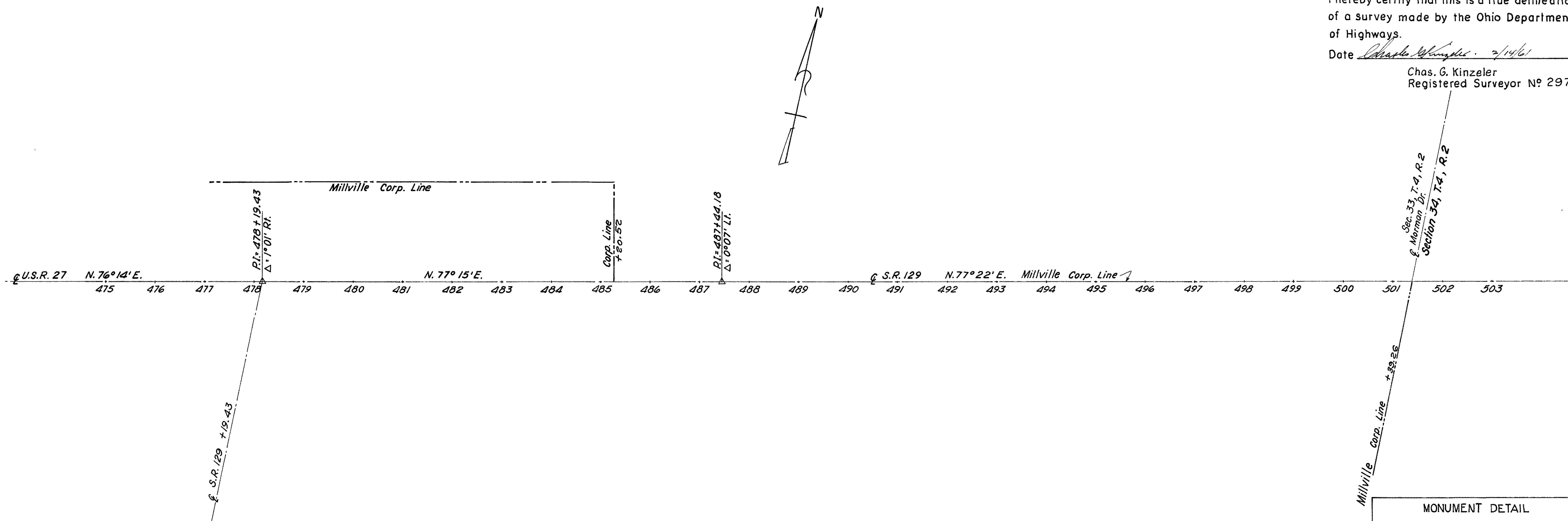
RECORDED  
Platbook 21 Page 21  
**Butler County Plat Record**

FILE # 580- 4th - 7.92

I hereby certify that this is a true delineation  
of a survey made by the Ohio Department  
of Highways.

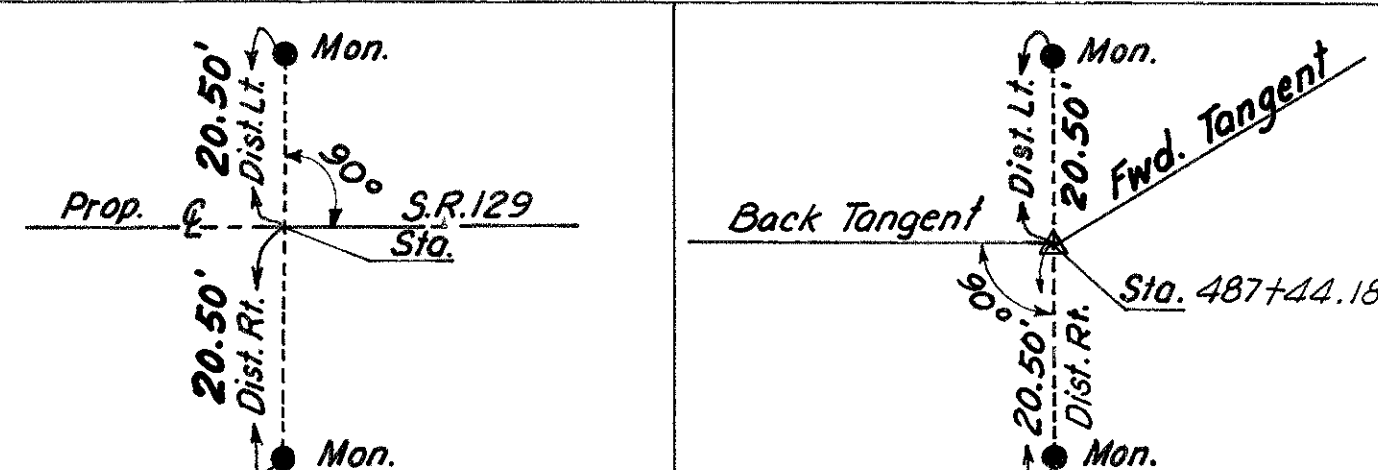
Date Charles Whangdick 7/14/61

Chas. G. Kinzeler  
Registered Surveyor No 2978

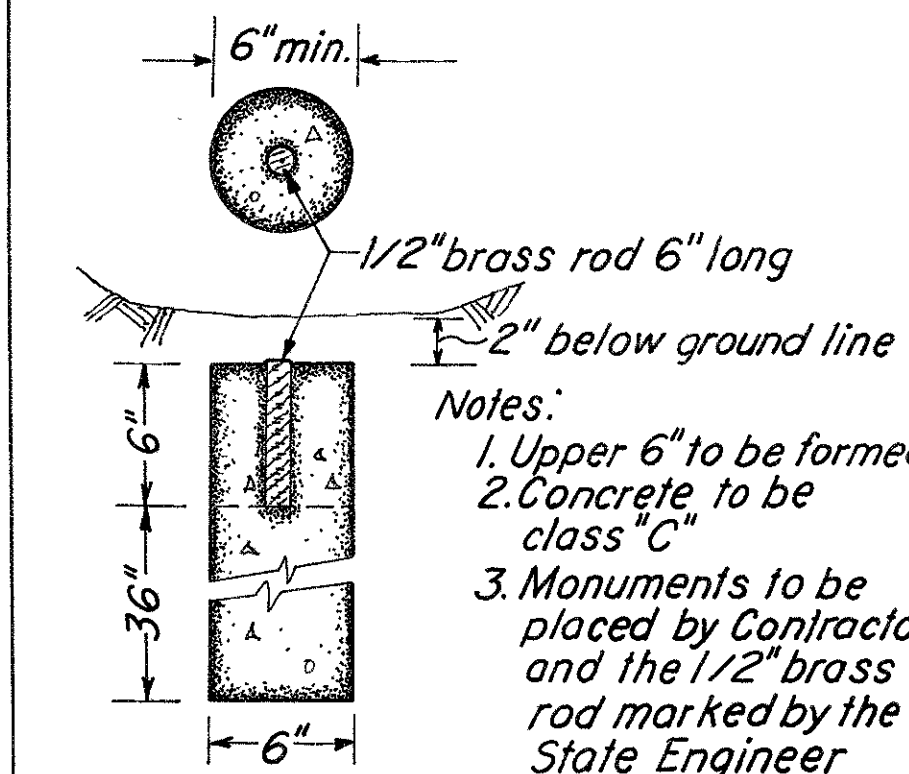


LOCATION OF CENTERLINE REFERENCE MONUMENTS			
Station	Dist. Lt.	Dist. Rt.	Location
481+00	20.5'	20.5'	
484+00	20.5'	20.5'	
487+44.18	20.5'	20.5'	P.I.
490+25	20.5'	20.5'	
495+50	20.5'	20.5'	
499+00	20.5'	20.5'	

TYPICAL LOCATIONS FOR CENTERLINE MONUMENTS



MONUMENT DETAIL



DATE	REVISED

BUTLER COUNTY  
BUT.-129-908  
R/W PLANS

## SUMMARY OF ADDITIONAL R/W REQUIRED

[illegible]

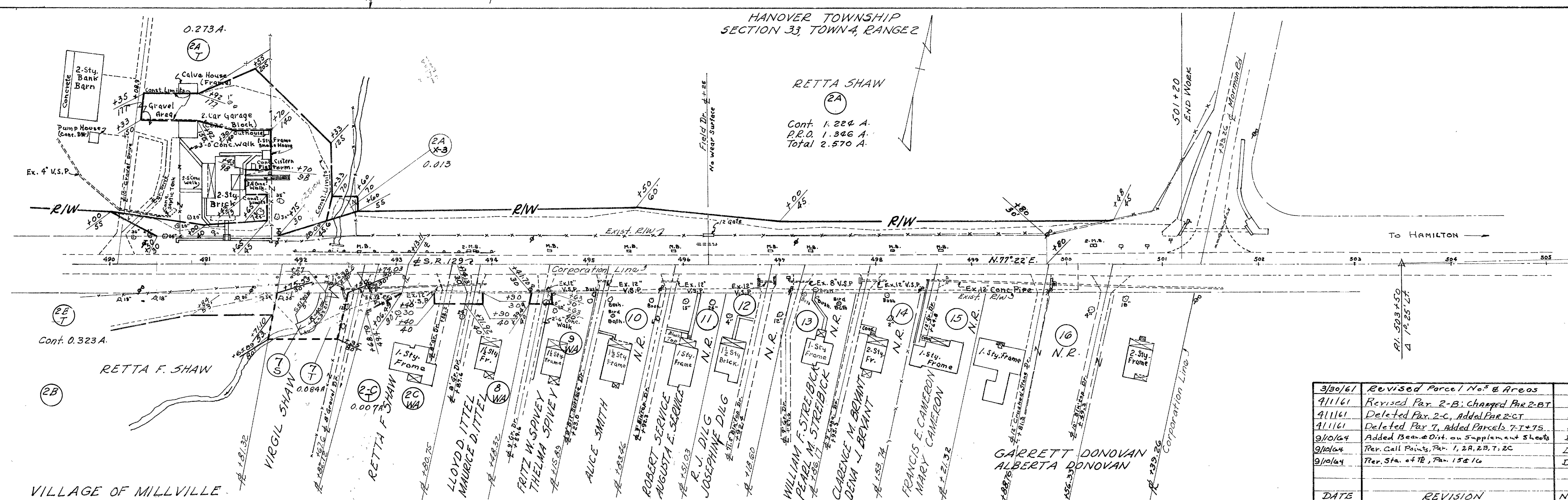
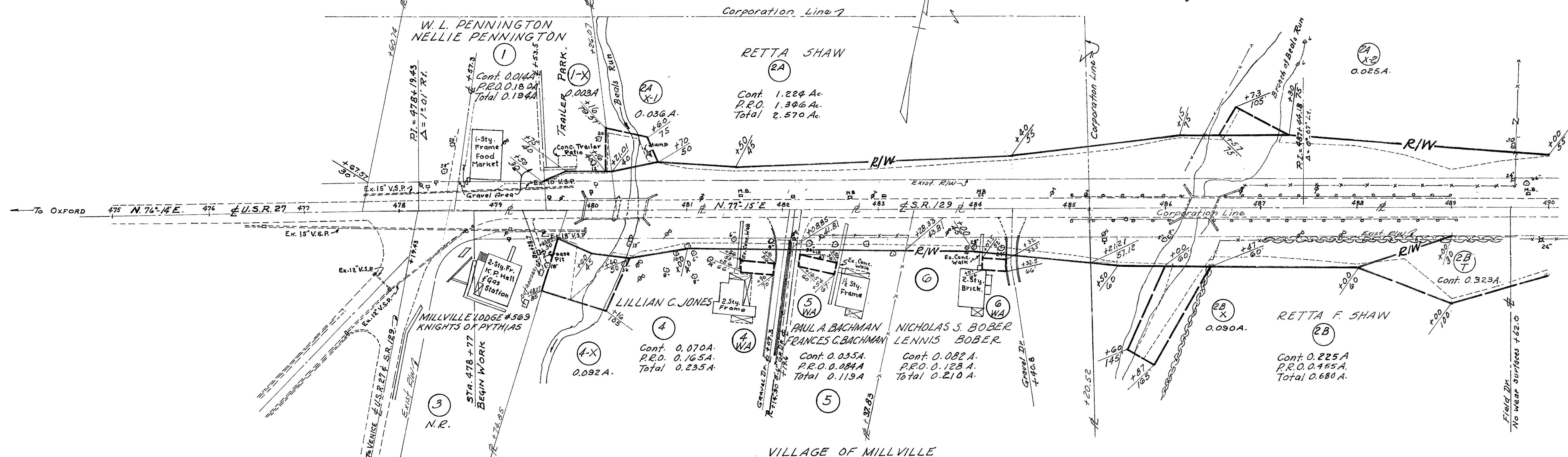
3/30/61	Revised	
DATE	REVISION	BY

HANOVER TOWNSHIP  
SECTION 33, TOWN 4, RANGE 2

BUTLER COUNTY  
BUT. 129-9.08  
R/W PLANS.

FED. RD. DIVISION	STATE	PROJECT
2	OHIO	

44  
44



DATE	REVISION	NAME
3/30/61	Revised Parcel No's & Areas	
4/11/61	Revised Par. 2-B; Changed Par 2-BT	D.T.
4/11/61	Deleted Par. 2-C, Added Par 2-CT	D.T.
4/11/61	Deleted Par 7, Added Parcels 7-T+TS	D.T.
9/10/64	Added Bear & Dist. on Supplement Sheets	D.R.C.
9/10/64	Per. Call Points, Par. 1, 2A, 2B, 7, 2C	D.R.C.
9/10/64	Per. Sta. of TB, Par. 15 & 16	D.R.C.



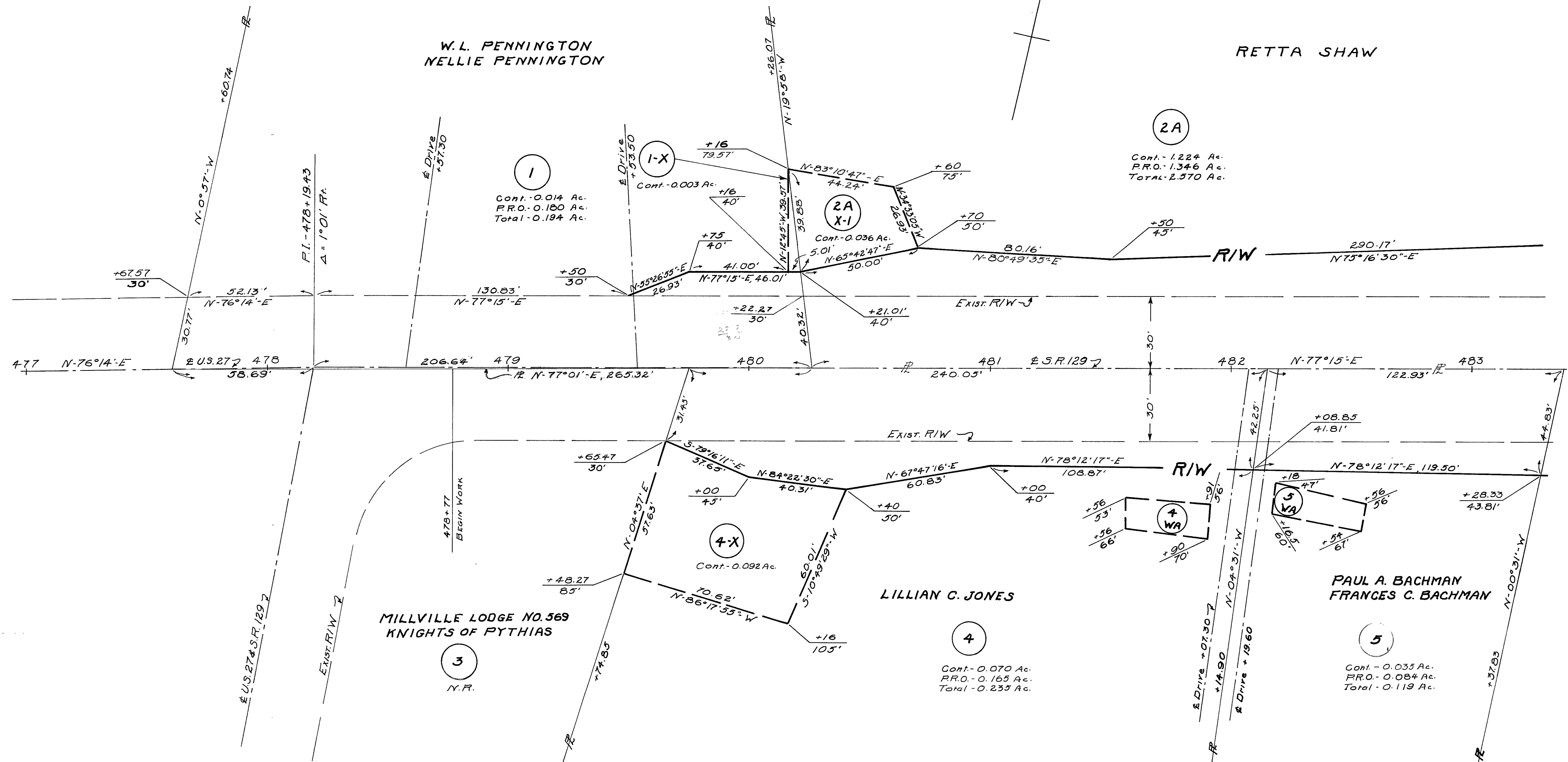
HANOVER TOWNSHIP  
SECTION 33, TOWN 4, RANGE 2

VILLAGE OF MILLVILLE

FED. RD. DIVISION	STATE	PROJECT
2	OHIO	

BUTLER COUNTY  
BUT.-129-9.08  
R/W PLANS

3-A

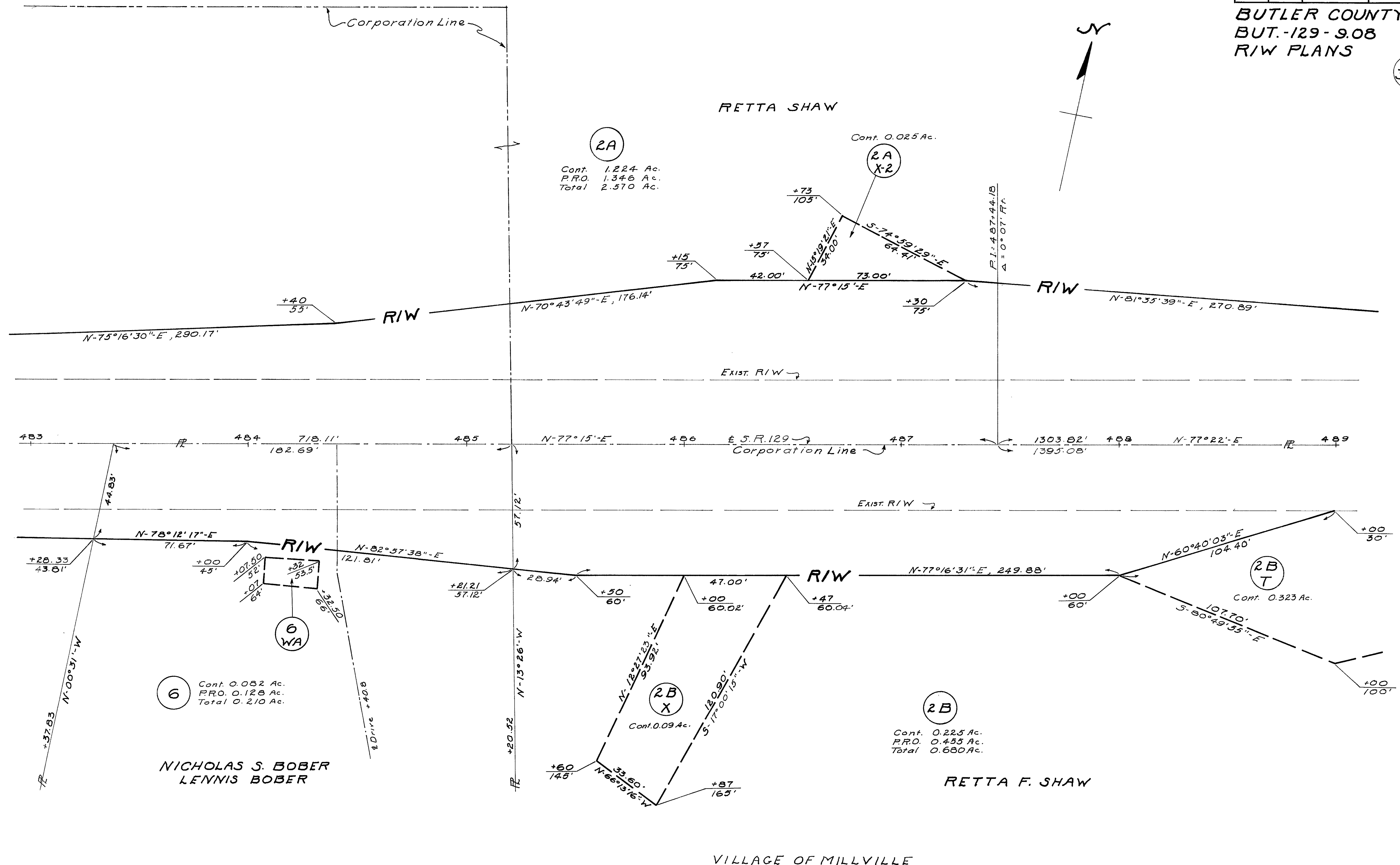


HANOVER TOWNSHIP  
SECTION 33, TOWN 4, RANGE 2

FED. RD. DIVISION	STATE	PROJECT
2	OHIO	

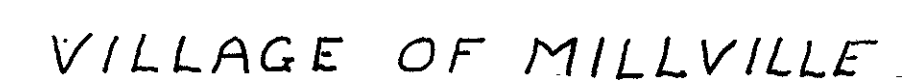
BUTLER COUNTY  
BUT.-129-9.08  
R/W PLANS

3-B



FED. RD. DIVISION	STATE	PROJECT	
2	OHIO		

3-C



HANOVER TOWNSHIP  
SECTION 33, TOWN 4, RANGE 2

FED. RD. DIVISION	STATE	PROJECT
2	OHIO	

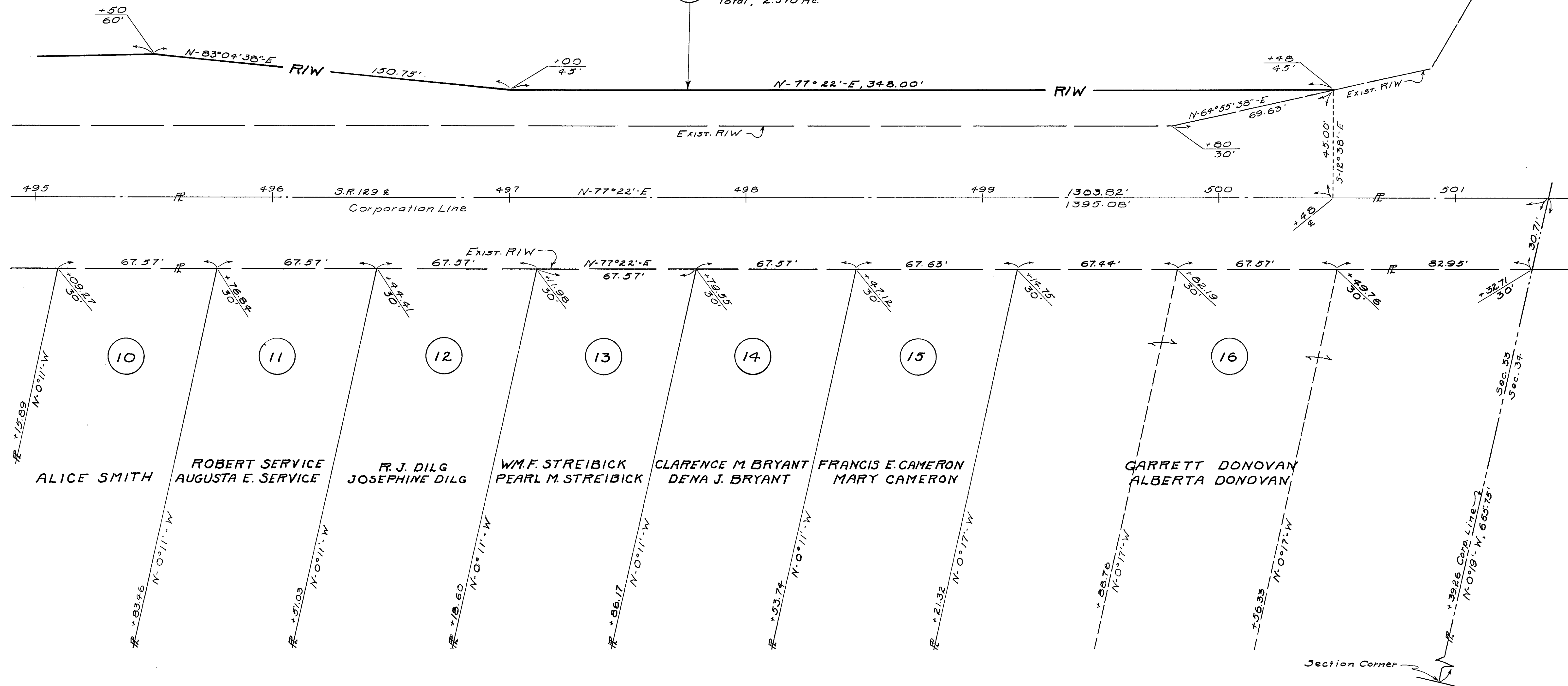
BUTLER COUNTY  
BUT.-129-9.08  
R/W PLANS

3-D

RET TA SHAW

2A

Cont., 1.224 Ac.  
P.R.O., 1.346 Ac.  
Total, 2.570 Ac.



VILLAGE OF MILLVILLE