
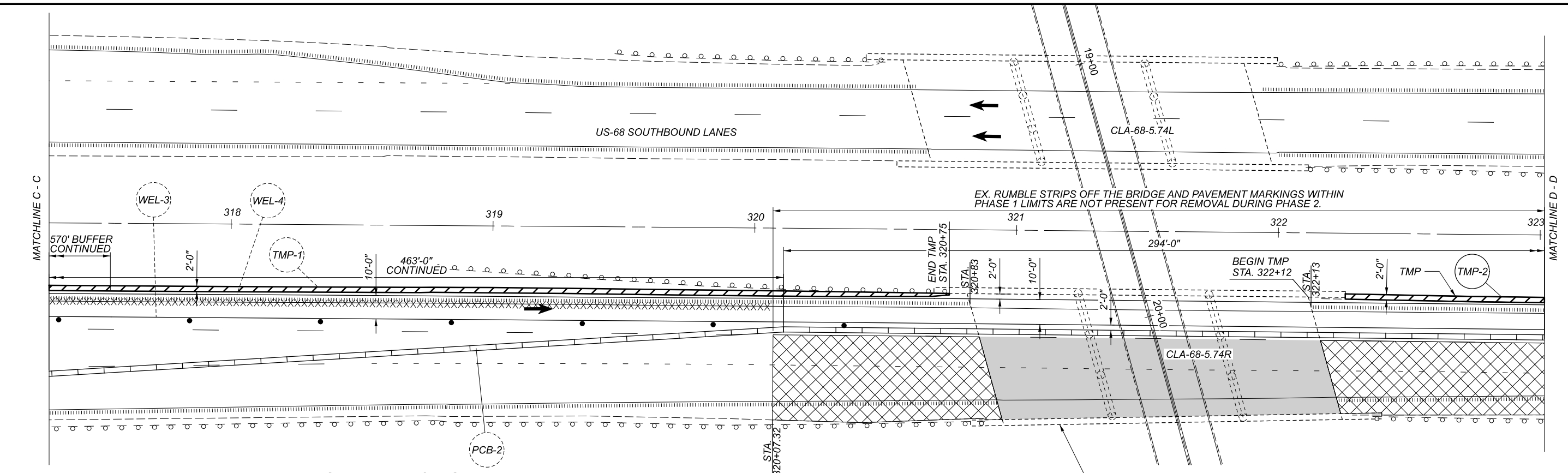


REF NO.	SHEET NO.	STATION TO STATION		614		614		614		614		614		614		615		622									
				WORK ZONE IMPACT ATTENUATOR, 24" WIDE HAZARDS, (UNIDIRECTIONAL)	WORK ZONE IMPACT ATTENUATOR, 24" WIDE HAZARDS, (BIDIRECTIONAL)	BARRIER REFLECTOR, TYPE 1(ONE WAY)	BARRIER REFLECTOR, TYPE 1(BIDIRECTIONAL)	OBJECT MARKER, ONE WAY	OBJECT MARKER, TWO WAY	WORK ZONE EDGE LINE, CLASS I, 4", 740.06, TYPE I	WORK ZONE DOTTED LINE, CLASS I, 4", 740.06, TYPE I	WORK ZONE STOP LINE, CLASS I, 740.06, TYPE I	PAVEMENT FOR MAINTAINING TRAFFIC, CLASS A	PORTABLE BARRIER, UNANCHORED	EACH	EACH	EACH	EACH	MILE	FT	FT	SY	FT				
U.S. 68 NORTHBOUND PHASE 1																											
WEL-1	9,10,11	302+47	TO	325+99									0.45														
WEL-2	10	310+87	TO	316+28									0.1														
WDL-1	10,11	316+28	TO	324+37										809													
PCB-1	10,11	318+79	TO	322+97	1		10		10										420								
U.S. 68 NORTHBOUND PHASE 2																											
WEL-3	12,13,14	302+10	TO	323+06									0.4														
WEL-4	13,14	308+84	TO	324+83									0.3														
PCB-2	13,14	315+69	TO	323+06	1		16		16										740								
WEL-5	15,16	601+74	TO	607+25									0.1														
TMP-1	13,14	310+84	TO	320+75													218										
TMP-2	14	322+12	TO	323+69													32										
REBERT PIKE SIGNALIZED CLOSURE																											
WEL-6	17	17+39	TO	22+75									0.1														
WEL-7	18	17+39	TO	22+75									0.1														
PCB-3	17	17+98	TO	21+01		2		8		8									310								
PCB-4	18	18+42	TO	21+01		2		3		3									80								
WSL-1	17			16+89													12										
WSL-2	17			23+25													12										
TOTALS CARRIED TO GENERAL SUMMARY						2		4		26		11		26		11		1.55		809		24		250		1550	

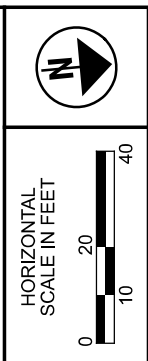
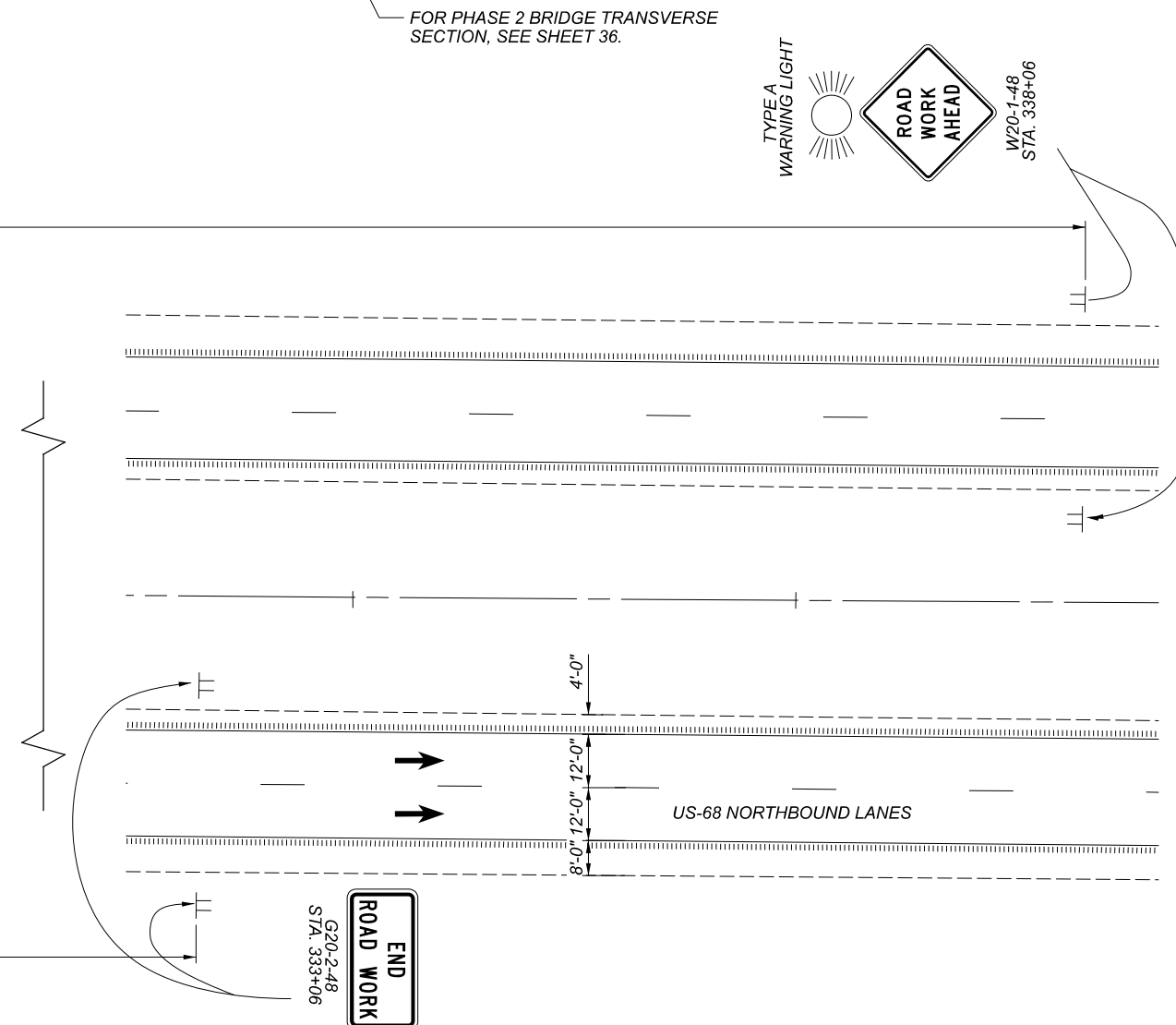
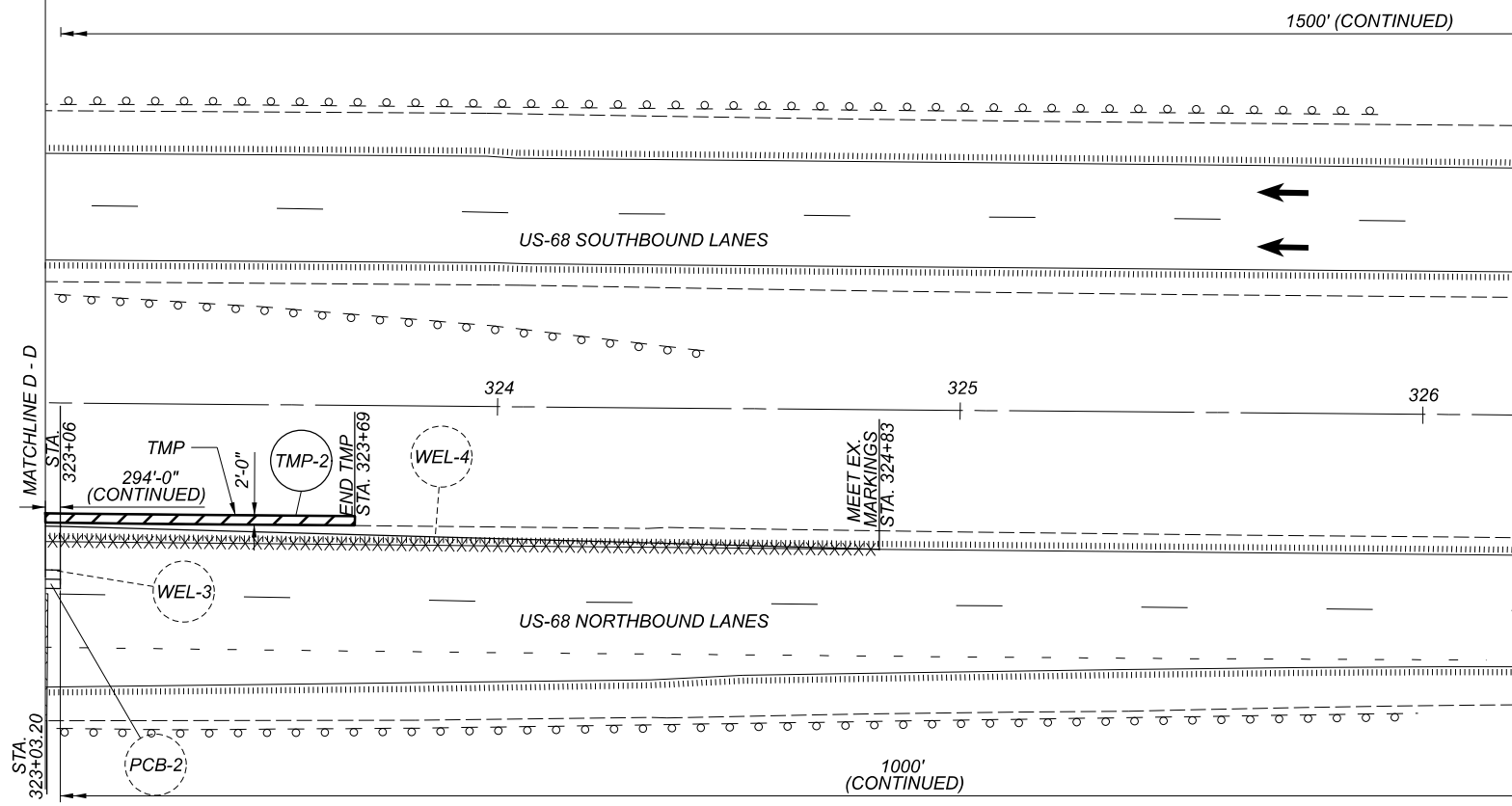
MAINTENANCE OF TRAFFIC SUBSUMMARY

DESIGN AGENCY

 DISTRICT 7
 ENGINEERING
 DESIGNER
 DHG
 REVIEWER
 LCG 04/26/21
 PROJECT ID
 108073
 SHEET TOTAL
 P.08 54



LEGEND AND NOTES

- PHASE 2 LATEX OVERLAY WORK AREA
 - PHASE 2 ASPHALT WORK AREA
 - PORTABLE BARRIER (PB)
 - EX. PAVEMENT MARKING REMOVAL
 - TEMPORARY PAVEMENT (TMP) PLACED IN PHASE 1
1. FOR QUANTITIES, SEE SHEET 8.
 2. TEMPORARY PAVEMENT TO BE REMOVED AND RESEDED AFTER ITS' USE IS COMPLETE.




MAINTENANCE OF TRAFFIC (3 OF 5)
CLA-068-0574R - PHASE 2

DESIGN AGENCY	
DISTRICT 7 ENGINEERING	
DESIGNER	
PJB	
REVIEWER	
RPH 04/20/21	
PROJECT ID	
108073	
SHEET	TOTAL
P.14	54

SHEET NUM.										PART.		ITEM	ITEM EXT	GRAND TOTAL	UNIT	DESCRIPTION	SEE SHEET NO.
6	7	8							01/NHS/BR								
	80								80		614	11110	80	HOUR	MAINTENANCE OF TRAFFIC LAW ENFORCEMENT OFFICER WITH PATROL CAR FOR ASSISTANCE		
		2							2		614	12380	2	EACH	WORK ZONE IMPACT ATTENUATOR, 24" WIDE HAZARDS, (UNIDIRECTIONAL)		
		4							4		614	12384	4	EACH	WORK ZONE IMPACT ATTENUATOR, 24" WIDE HAZARDS, (BIDIRECTIONAL)		
LS									LS		614	12420	LS		DETOUR SIGNING		
2									2		614	12740	2	EACH	WORK ZONE LIGHTING SYSTEM		
		11							11		614	13310	11	EACH	BARRIER REFLECTOR, TYPE 1(BIDIRECTIONAL)		
		26							26		614	13310	26	EACH	BARRIER REFLECTOR, TYPE 1(ONE WAY)		
		26							26		614	13350	26	EACH	OBJECT MARKER, ONE WAY		
		11							11		614	13360	11	EACH	OBJECT MARKER, TWO WAY		
	2								2		614	18601	2	SNMT	PORTABLE CHANGEABLE MESSAGE SIGN, AS PER PLAN	7	
		1.55							1.55		614	22200	1.55	MILE	WORK ZONE EDGE LINE, CLASS I, 4", 740.06, TYPE I		
		809							809		614	24400	809	FT	WORK ZONE DOTTED LINE, CLASS I, 4", 740.06, TYPE I		
		24							24		614	26400	24	FT	WORK ZONE STOP LINE, CLASS I, 740.06, TYPE I		
									LS		615	10000	LS		ROADS FOR MAINTAINING TRAFFIC		
		250							250		615	20000	250	SY	PAVEMENT FOR MAINTAINING TRAFFIC, CLASS A		
		1,550							1,550		622	41100	1,550	FT	PORTABLE BARRIER, UNANCHORED		
															INCIDENTALS		
									LS		614	11000	LS		MAINTAINING TRAFFIC		
									5		619	16010	5	MNTH	FIELD OFFICE, TYPE B		
									LS		623	10000	LS		CONSTRUCTION LAYOUT STAKES AND SURVEYING		
									LS		624	10000	LS		MOBILIZATION		

DESIGN AGENCY



DISTRICT 7
ENGINEERING

DESIGNER
DHG

REVIEWER
LCG 04/26/21

PROJECT ID
108073

SHEET TOTAL
P.23 54