

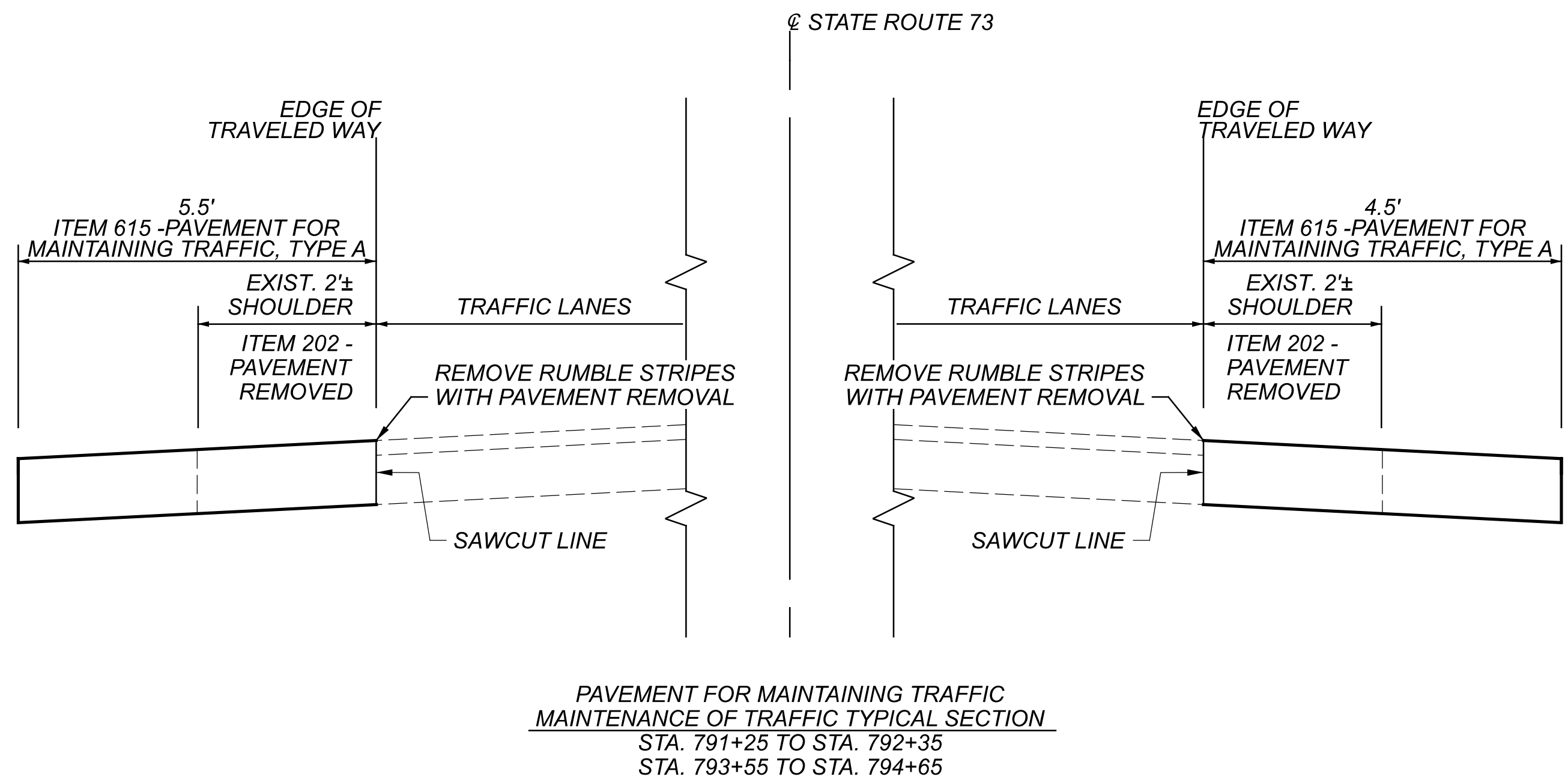
PHASE NO.	SHEET NO.	STATION		SIDE	LENGTH (FEET)	614											615		622
		FROM	TO			PAVEMENT REMOVED	INCREASED BARRIER DELINEATION	WORK ZONE IMPACT ATTENUATOR, 24" WIDE HAZARDS (BI-DIR.)	BARRIER REFLECTOR, TYPE 1 (BI-DIR.)	BARRIER REFLECTOR, TYPE 5 (BI-DIR.)	OBJECT MARKER, TWO-WAY	WORK ZONE CENTER LINE, CLASS 1, 642 PAINT	WORK ZONE EDGE LINE, CLASS 1, 642 PAINT (WHITE)	WORK ZONE STOP LINE, CLASS 1, 642 PAINT	PAVEMENT FOR MAINTAINING TRAFFIC, CLASS A	ROADS FOR MAINTAINING TRAFFIC	PORTABLE BARRIER, UNANCHORED		
						SQ YD	FT	EACH	EACH	EACH	EACH	MILE	MILE	FT		SQ YD	LUMP	FT	
1	4	785+00	790+00	CL	500							0.10		12					
1	4	790+50	796+00	LT	550		390	2	9		9		0.10					390	
		790+50	796+00	RT	550		300			7			0.10						
1	4	791+25	792+35	RT	110	20									50		LS		
		793+55	794+65	RT	110	20									50		LS		
1	4	796+50	801+50	CL	500							0.10		12					
2	5	785+00	790+00	CL	500							0.10		12					
2	5	790+50	796+00	LT	550		300			7			0.10						
		790+50	796+00	RT	550		390	2	7		9		0.10					390	
2	5	791+25	792+35	LT	110	40									60		LS		
		793+55	794+65	LT	110	40									60		LS		
2	5	796+50	801+50	CL	500							0.10		12					
TOTALS CARRIED TO GENERAL SUMMARY						120		1380	4	18	14	18	0.40	0.40	48		220	LUMP	780

FULLY-ACTUATED OPERATION OF WORK ZONE TRAFFIC SIGNAL

THE WORK ZONE SIGNAL CONTROL REQUIRED FOR THIS PROJECT AS SHOWN IN THE PLANS AND TRAFFIC SCDS MT- 96.11, 96.20 AND 96.26 SHALL BE FULLY TRAFFIC-ACTUATED AND OPERATE IN A MANNER SIMILAR TO THAT DESCRIBED IN SECTION 733.02 OF THE CONSTRUCTION AND MATERIAL SPECIFICATIONS. THE INITIAL CONTROLLER TIMING SHALL BE AS FOLLOWS:

	PHASE					
	1 (ALL RED) DUMMY PHASE	2 SR 73 (NORTHBOUND)	3 (ALL RED) DUMMY PHASE	4 SR 73 (SOUTHBOUND)	5 (ALL RED) DUMMY PHASE	6 PRIVATE DRIVE STA. 796+00
MIN. GREEN		20		20		5
EXTENSION		3		3		3
MAX. GREEN		30		30		15
YELLOW		6		6		3
ALL RED	X	24	X	24	X	24
RECALL	OFF	ON	OFF	OFF	OFF	OFF

THE CONTRACTOR SHALL ALSO DESIGN, FURNISH, INSTALL AND MAINTAIN A TRAFFIC DETECTOR ON EACH TRAFFIC APPROACH WHICH WILL RELIABLY DETECT ALL LEGAL TRAFFIC APPROACHING (BUT NOT LEAVING) THE SIGNAL AS IT PASSES OR WAITS IN THE DESIGNATED DETECTOR ZONE SHOWN IN THE PLANS. DETECTOR DESIGNS WHICH DO NOT PROVIDE RELIABLE DETECTION, FREE FROM FALSE CALLS, SHALL BE IMMEDIATELY REPLACED BY THE CONTRACTOR.



DESIGN AGENCY



DESIGNER

GTF

REVIEWER

SK MM-DD-YY

PROJECT ID

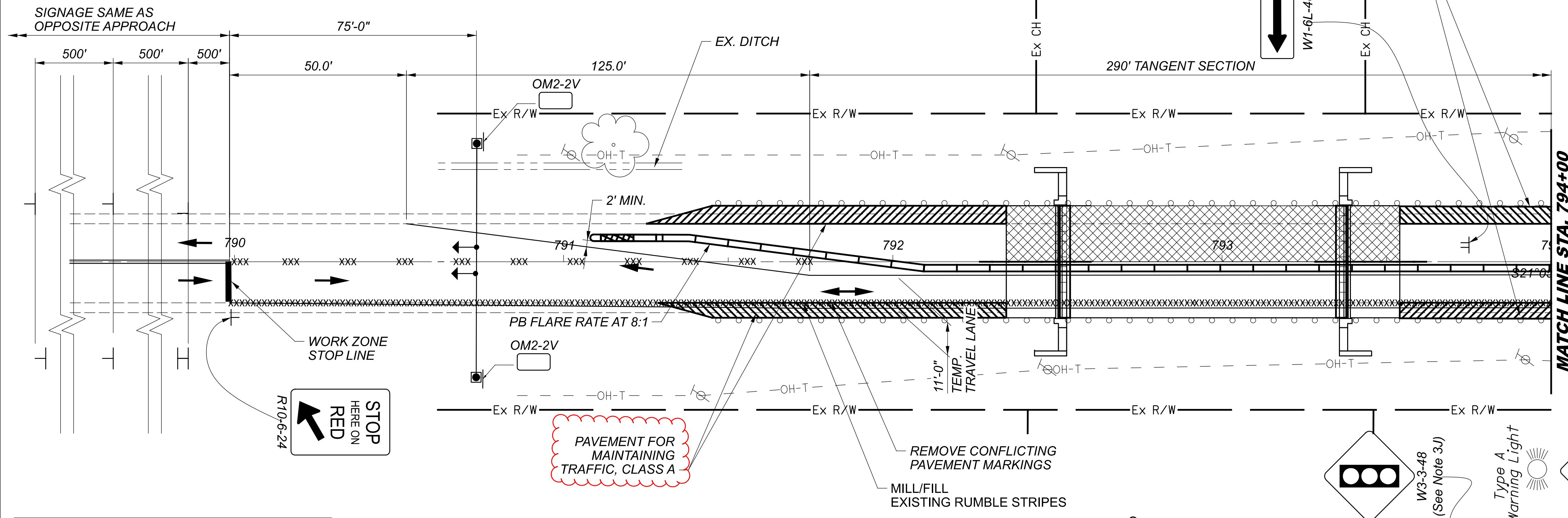
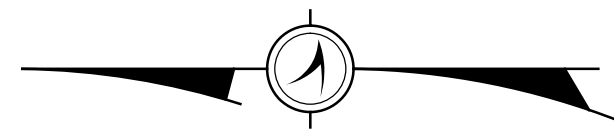
105218

SHEET

4

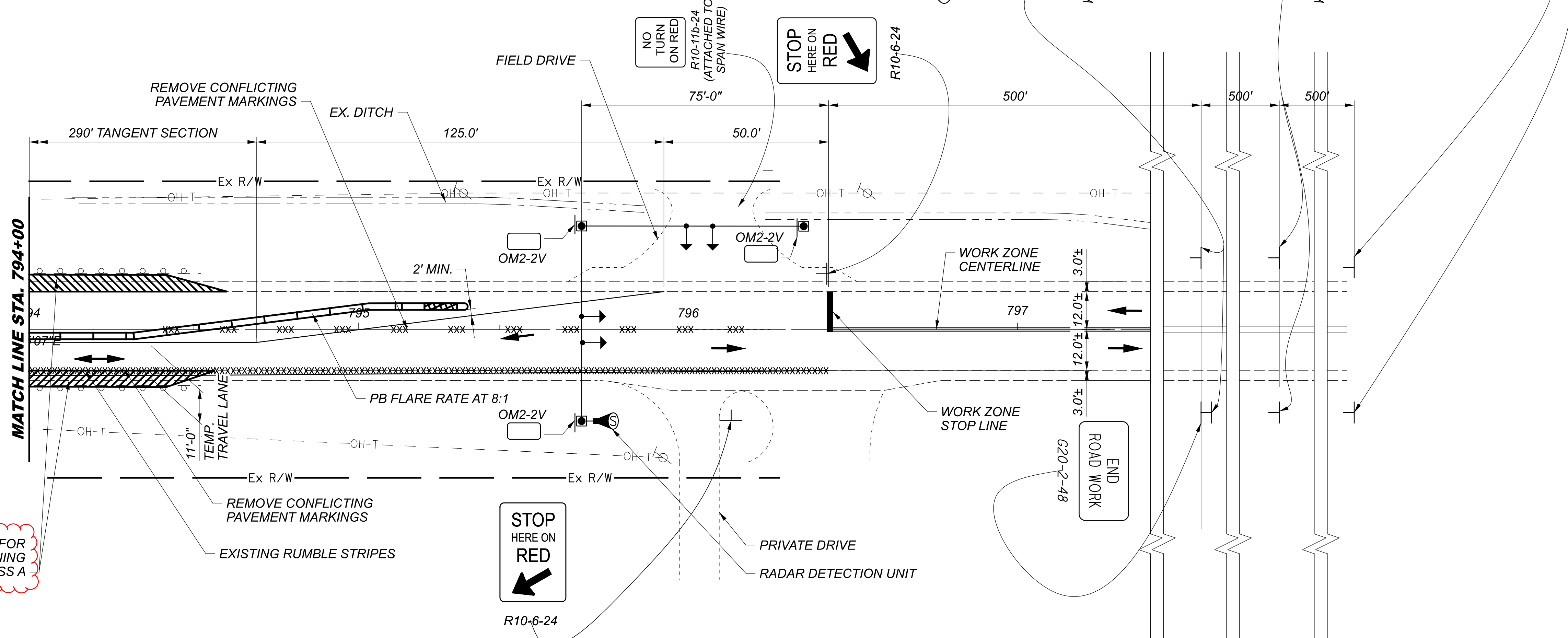
TOTAL

16

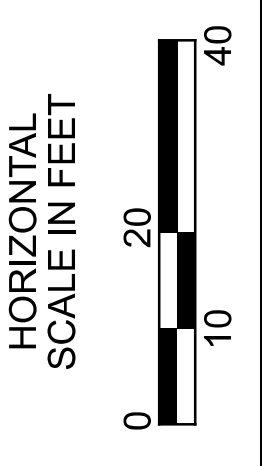


LEGEND	
PORTABLE BARRIER	
REMOVE EXISTING MARKINGS	XXXXXXXX
DIRECTION OF TRAVEL	
TYPE 3 BARRICADE	
WORK ZONE	
ATTENUATOR	

- NOTES:**
1. REFER TO SCD MT-96.11 AND SCD MT-96.20 FOR ADDITIONAL INFORMATION.
 2. SEE SHEET_4_ FOR MAINTENANCE OF TRAFFIC SUB SUMMARY AND SIGNAL TIMING CHART.
 3. SEE SHEET_4_ FOR MAINTENANCE OF TRAFFIC TYPICAL SECTIONS



MAINTENANCE OF TRAFFIC PLAN

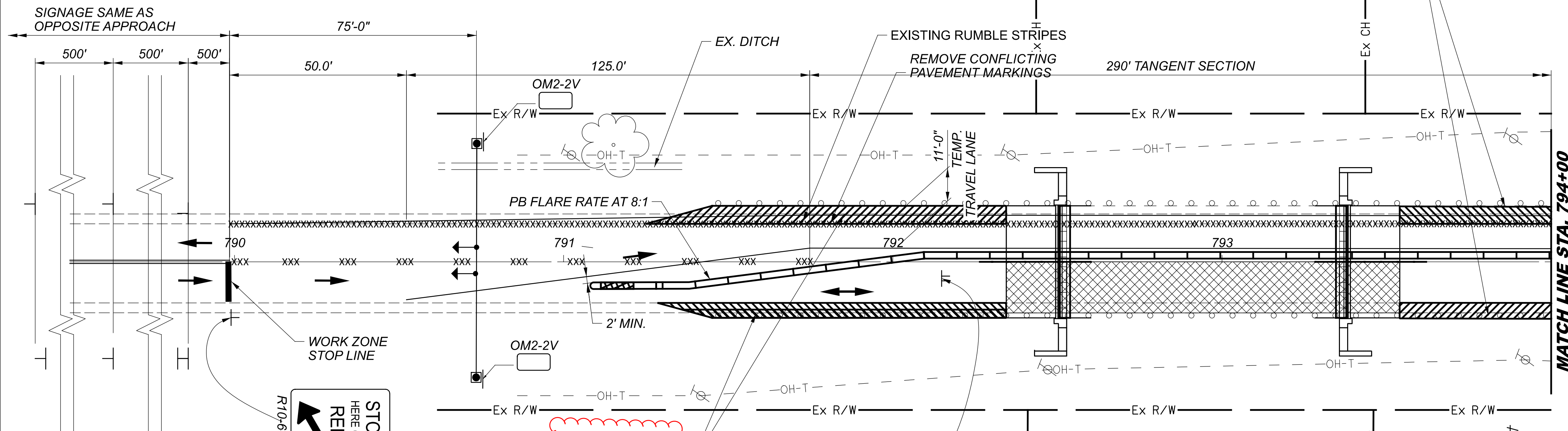
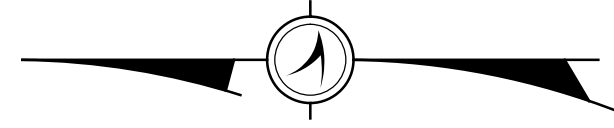


**MAINTENANCE OF TRAFFIC PLAN
 CLI-73-15.22 PHASE 1**

DESIGN AGENCY

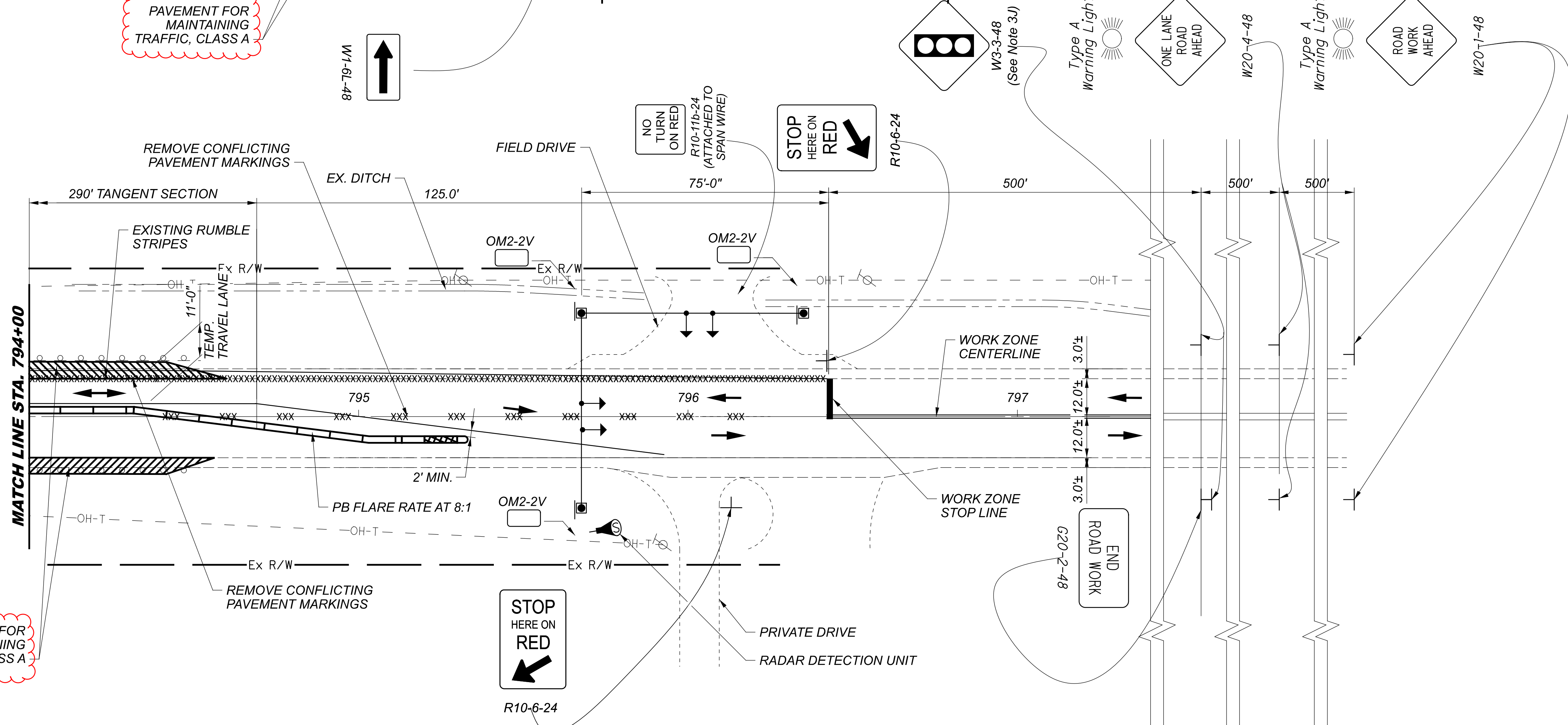


DESIGNER	GTF
REVIEWER	SK MM-DD-YY
PROJECT ID	105218
SHEET	TOTAL
5	23



LEGEND	
PORTABLE BARRIER	
REMOVE EXISTING MARKINGS	XXXXXXXXXX
DIRECTION OF TRAVEL	
TYPE 3 BARRICADE	
WORK ZONE	
ATTENUATOR	

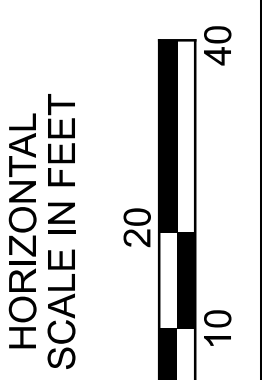
- NOTES:**
1. REFER TO SCD MT-96.11 AND SCD MT-96.20 FOR ADDITIONAL INFORMATION.
 2. SEE SHEET_4_FOR MAINTENANCE OF TRAFFIC SUB SUMMARY AND SIGNAL TIMING CHART.
 3. SEE SHEET_4_FOR MAINTENANCE OF TRAFFIC TYPICAL SECTIONS.



PAVEMENT FOR MAINTAINING TRAFFIC, CLASS A

PAVEMENT FOR MAINTAINING TRAFFIC, CLASS A

MAINTENANCE OF TRAFFIC PLAN



**MAINTENANCE OF TRAFFIC PLAN
 CLI-73-15.22 PHASE 2**

DESIGN AGENCY



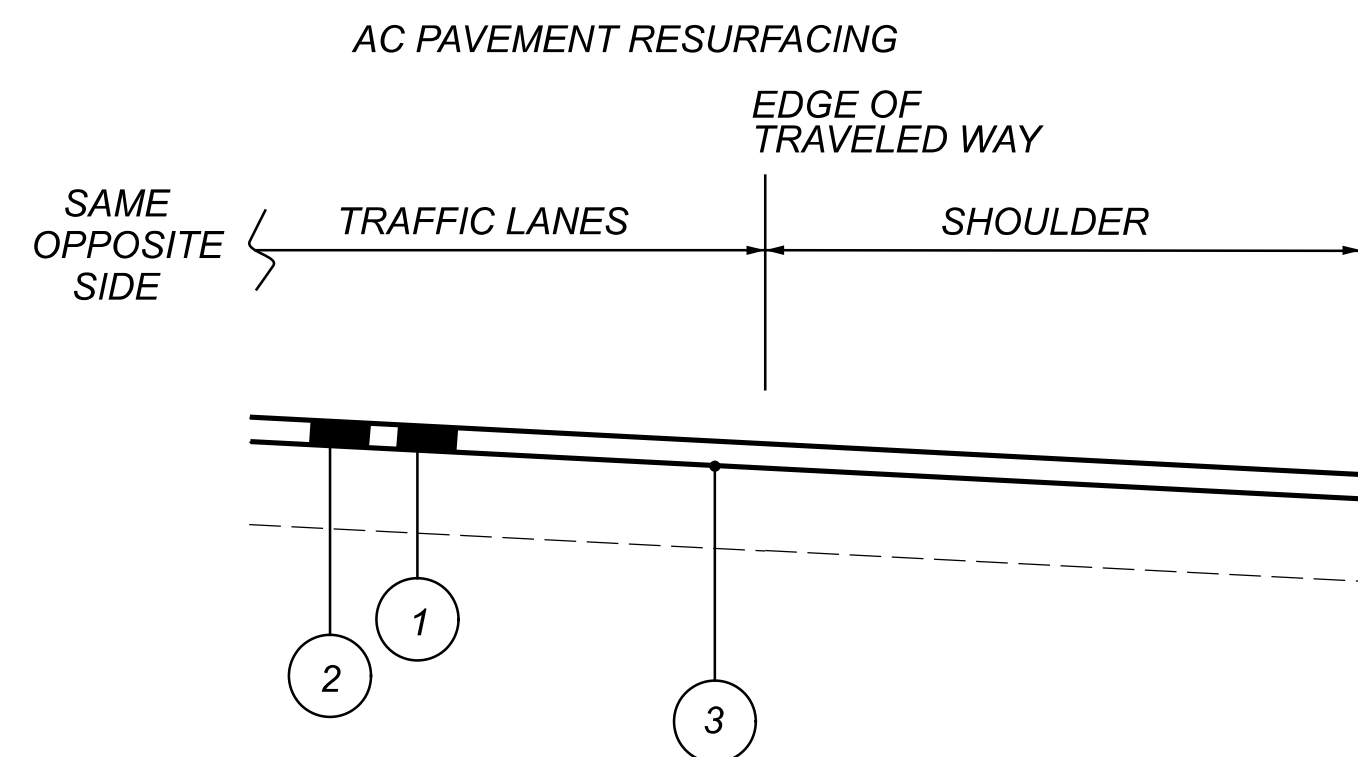
DESIGNER
 GTF

REVIEWER
 SK MM-DD-YY

PROJECT ID
 105218

SHEET	TOTAL
6	16

PAVEMENT & PAVEMENT MARKING CALCULATIONS																					
ROUTE	STATION		LENGTH		PAVEMENT WIDTH FT	PAVEMENT AREA SQ YD	209		254		407 NON TRACKING TACK COAT @ 0.09 GAL/SQ YD	441		RAISED PAVEMENT MARKER REMOVED	621 RPM	644		646		NOTES	
	FROM	TO	MILES	FT			RESHAPING UNDER GUARDRAIL	PAVEMENT PLANING ASPHALT CONCRETE		THICK- NESS		ASPHALT CONCRETE INTERMEDIATE COURSE, TYPE 1 (448),	EACH			EACH	EDGE LINE, 6"	CENTER LINE	EDGE LINE, 6"		CENTER LINE
								DEPTH INCHES	SQ YD												
CLI SR 73	790+00	792+35		235	30	783	0.04	1.00	783	71	1.00	22		3	3	0.08	0.04				
CLI SR 73	792+35	793+55		120	30	400								2				0.04	0.02	BRIDGE No.: CLI-73-1522	
CLI SR 73	793+55	796+50		295	30	983	0.04	1.00	983	89	1.00	27		3	3	0.08	0.04				
TOTALS CARRIED TO GENERAL SUMMARY							0.08		1767	159		49		8	6	0.16	0.08	0.04	0.02		



LEGEND

- ① ITEM 254 - PAVEMENT PLANING (T=1.00")
- ② ITEM 441 - 1.0" ASPHALT CONCRETE INTERMEDIATE COURSE, TYPE 1, (448)
- ③ ITEM 407 - NON-TRACKING TACK COAT

DESIGN AGENCY



DESIGNER

GTF

REVIEWER

JAO 06/30/22

PROJECT ID

105218

SHEET TOTAL

7 23

SHEET NUM.											PART.	ITEM	ITEM	GRAND	UNIT	DESCRIPTION	SEE SHEET NO.
2	3	7									01/STR/BR	EXT	TOTAL				
LUMP	120										LUMP	201	11000	LS		ROADWAY	2
											120	202	23000	120	SY	CLEARING AND GRUBBING	
											350	202	38000	350	FT	PAVEMENT REMOVED	
											4	202	42001	4	EACH	GUARDRAIL REMOVED	2
											4	202	47000	4	EACH	ANCHOR ASSEMBLY REMOVED, TYPE A, AS PER PLAN	
	0.08										150	606	15100	150	FT	BRIDGE TERMINAL ASSEMBLY REMOVED	
	4										0.08	209	15050	0.08	MILE	GUARDRAIL, TYPE MGS WITH LONG POSTS	
	4										4	606	26150	4	EACH	RESHAPING UNDER GUARDRAIL	
	4										4	606	35141	4	EACH	ANCHOR ASSEMBLY, MGS TYPE E (NCHRP 350 OR MASH 2016)	
											LUMP	SPECIAL	69098400	LS		BRIDGE TERMINAL ASSEMBLY, TYPE 4, AS PER PLAN	2
											LUMP	878	25000	LS		CONSULTANT FOR CONCRETE QUALITY CONTROL INCLUDING TESTING AND INSPECTION	2
																INSPECTION AND COMPACTION TESTING OF UNBOUND MATERIALS	2
																EROSION CONTROL	
750											750	659	10000	750	SY	SEEDING AND MULCHING	
0.26											0.26	659	20000	0.26	TON	COMMERCIAL FERTILIZER	
0.16											0.16	659	31000	0.16	ACRE	LIME	
8											8	659	35000	8	MGAL	WATER	
											1,500	832	30000	1,500	EACH	EROSION CONTROL	
																PAVEMENT	
		1,767									1,767	254	01000	1,767	SY	PAVEMENT PLANING, ASPHALT CONCRETE (D = 1.00")	
		159									159	407	20000	159	GAL	NON-TRACKING TACK COAT	
		49									49	441	50200	49	CY	ASPHALT CONCRETE INTERMEDIATE COURSE, TYPE 1, (448)	
																TRAFFIC CONTROL	
		8									8	621	54000	8	EACH	RAISED PAVEMENT MARKER REMOVED	
		6									6	621	00100	6	EACH	RPM	
		14									14	626	00110	14	EACH	BARRIER REFLECTOR, TYPE 2 (BI-DIRECTIONAL)	
		0.16									0.16	644	00104	0.16	MILE	EDGE LINE, 6"	
		0.08									0.08	644	00300	0.08	MILE	CENTER LINE	
		0.04									0.04	646	10010	0.04	MILE	EDGE LINE, 6"	
		0.02									0.02	646	10200	0.02	MILE	CENTER LINE	
																STRUCTURE REPAIR (BRIDGE No.: CLI-380-0827)	
																(SEE SHEET 10)	
																STRUCTURE REPAIR (BRIDGE No.: CLI-73-1522)	
																(SEE SHEET 10)	
																MAINTENANCE OF TRAFFIC	
1,380											1,380	614	11630	1,380	FT	INCREASED BARRIER DELINEATION	
4											4	614	12384	4	EACH	WORK ZONE IMPACT ATTENUATOR, 24" WIDE HAZARDS, (BIDIRECTIONAL)	
18											18	614	13310	18	EACH	BARRIER REFLECTOR, TYPE 1 (BI-DIRECTIONAL)	
14											14	614	13318	14	EACH	BARRIER REFLECTOR, TYPE 5 (BI-DIRECTIONAL)	
18											18	614	13360	18	EACH	OBJECT MARKER, TWO WAY	
0.4											0.4	614	21100	0.4	MILE	WORK ZONE CENTER LINE, CLASS I, 642 PAINT	
0.4											0.4	614	22110	0.4	MILE	WORK ZONE EDGE LINE, CLASS I, 6", 642 PAINT	
48											48	614	26200	48	FT	WORK ZONE STOP LINE, CLASS I, 642 PAINT	
220											220	615	20000	220	SY	PAVEMENT FOR MAINTAINING TRAFFIC, CLASS A	
LUMP											LUMP	615	10000	LS		ROADS FOR MAINTAINING TRAFFIC	
780											780	622	41100	780	FT	PORTABLE BARRIER, UNANCHORED	
																INCIDENTALS	
											LUMP	614	11000	LS		MAINTAINING TRAFFIC	
											LUMP	623	10000	LS		CONSTRUCTION LAYOUT STAKES AND SURVEYING	
											LUMP	624	10000	LS		MOBILIZATION	

GENERAL SUMMARY

DESIGN AGENCY	
DESIGNER	GTF
REVIEWER	JAO 06/30/22
PROJECT ID	105218
SHEET	8
TOTAL	23