



Home > Airports > North America > United States > Ohio

KILN ILN ILN WILMINGTON AIR PARK AIRPORT
 WILMINGTON, OH, USA



Airport Info

Location

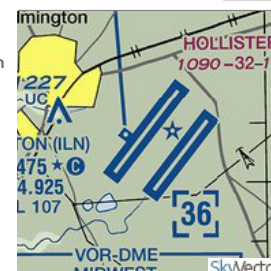
Latitude / Longitude: 39°25'40"N / 83°47'31"W
 39°25.675'N / 83°47.5267'W
 39.4279 / -83.7921

Elevation: 1076.7 ft. (surveyed)

Variation: 04W (1985)

From city: 02 miles SE of WILMINGTON, OH

Suggest Updated Information for this Airport



Operations

Facility use: Open to the public

Sectional chart: CINCINNATI

Control tower: yes

Boundary ARTCC: INDIANAPOLIS

FSS: DAYTON [1-800-WX-BRIEF]

NOTAMs facility: ILN (NOTAM-D service available)

Segmented circle: no

Lights: SEE RMK

Beacon: CLEAR-GREEN (LIGHTED LAND AIRPORT)

Landing fee: yes

Communications

CTAF: 119.475

Nearby radio navigation aids

VOR	radial/distance	VOR name	Freq	Var
MXQ	at field	MIDWEST VOR/DME	112.90	04W
SGH	174°T/24.7	SPRINGFIELD VOR/DME	113.20	04W
XUB	261°T/38.2	YELLOW BUD VOR	112.50	05W

NDB name	Hdg/Dist	Freq	Var	ID
AIRBO	214°T/4.6	407	04W	IL
CUBLA	41°T/5.9	299	04W	HW
XENIA	160°T/18.4	395	03W	XEN
HILLSBORO	322°T/18.6	278	05W	HOC
COURT HOUSE	241°T/21.3	414	05W	CSS
CLARK COUNTY	181°T/26.8	341	04W	CCJ
SPORTYS	43°T/28.8	245	04W	PWF
MADEIRA	65°T/28.9	379	04W	MDE
CINCINNATI-BLUE ASH	69°T/29.8	388	04W	ISZ
CINCINNATI	58°T/30.2	335	04W	LUK
HOOK FIELD	98°T/30.7	239	04W	HKF
LONDON	206°T/33.9	263	06W	UYF
ROSS COUNTY	269°T/35.4	236	05W	RZT
BOUTN	229°T/35.9	230	05W	BU
WEST UNION	343°T/36.0	359	04W	AMT
HAMILTON	85°T/36.3	260	04W	HAO

PEEBLES	325°T/37.3	329	02W	PZO
CIRCLEVILLE	262°T/38.1	366	05W	CYO

Services

Fuel available:	A
Airframe service:	MAJOR
Powerplant service:	MAJOR
Bottled oxygen:	NONE
Bulk oxygen:	HIGH/LOW

Runway Information

Runway 04L/22R

Dimensions:	10701 x 150 ft.
Surface:	PORTLAND CEMENT CONCRETE,FAIR CONDITION,SAW-CUT OR PLASTIC GROOVED
Edge lights:	HIGH

Runway 04L

Runway 22R

Latitude:	39-25-09.6841N	39-26-33.7951N
Longitude:	083-48-33.3907W	083-47-10.7292W
Elevation:	1053.0 ft.	1076.7 ft.
Traffic pattern:	left	left
Runway true heading:	037	217
Declared distances:	TORA:10701 TODA:10701 ASDA:10701 LDA:10701	TORA:10701 TODA:10701 ASDA:10701 LDA:10701
Markings:	precision instrument, in good condition	precision instrument, in good condition
Visual slope indicator:	4-LGT PAPI ON LEFT SIDE OF RUNWAY (3.00 degrees glide path)	4-LGT PAPI ON LEFT SIDE OF RUNWAY (3.00 degrees glide path)
RVR equipment:	touchdown midfield rollout	touchdown midfield rollout
Approach lights:	1,400 FOOT MEDIUM INTENSITY APPROACH LIGHTING SYSTEM WITH RUNWAY ALIGNMENT INDICATOR LIGHTS	STANDARD 2,400 FOOT HIGH INTENSITY APPROACH LIGHTING SYSTEM WITH SEQUENCED FLASHERS, CATEGORY II OR III CONFIGURATION
Centerline lights:	yes	yes
Touchdown lights:		yes
Instrument approach:	ILS	ILS

Runway 04R/22L

Dimensions:	9000 x 150 ft.
Surface:	PORTLAND CEMENT CONCRETE,FAIR CONDITION,SAW-CUT OR PLASTIC GROOVED
Edge lights:	HIGH

Runway 04R

Runway 22L

Latitude:	39-24-51.7868N	39-26-02.5263N
Longitude:	083-47-42.0864W	083-46-32.5591W
Elevation:	1042.5 ft.	1076.5 ft.
Runway true heading:	037	217
Declared distances:	TORA:9000 TODA:9000 ASDA:9000 LDA:9000	TORA:9000 TODA:9000 ASDA:9000 LDA:9000
Markings:	precision instrument, in good condition	precision instrument, in good condition
Visual slope indicator:	4-LGT PAPI ON LEFT SIDE OF RUNWAY (3.00 degrees glide path)	4-LGT PAPI ON LEFT SIDE OF RUNWAY (3.00 degrees glide path)
RVR equipment:	touchdown midfield rollout	touchdown midfield rollout
Approach lights:	1,400 FOOT MEDIUM INTENSITY APPROACH LIGHTING SYSTEM WITH RUNWAY ALIGNMENT INDICATOR LIGHTS	STANDARD 2,400 FOOT HIGH INTENSITY APPROACH LIGHTING SYSTEM WITH SEQUENCED FLASHERS, CATEGORY II OR III CONFIGURATION
Centerline lights:	yes	yes
Touchdown lights:		yes
Instrument approach:	ILS/DME	ILS/DME

Operational Statistics

Annual operations:	1000
--------------------	------

Commercial: 100
 Air taxi: 900

Additional Remarks

- 4 HR PPR FOR ALL TRANSIENT ACFT CALL AMGR 937-366-2282 DURING OPER HRS. AFT HRS CALL FLT CTL 937-366-2114.
- COLD TEMPERATURE RESTRICTED AIRPORT. ALTITUDE CORRECTION REQUIRED AT OR BELOW -22C.
- COLUMBUS APCH CD (614) 338-8537.

Instrument Procedures

Effective Apr 25, 2019 to May 22, 2019

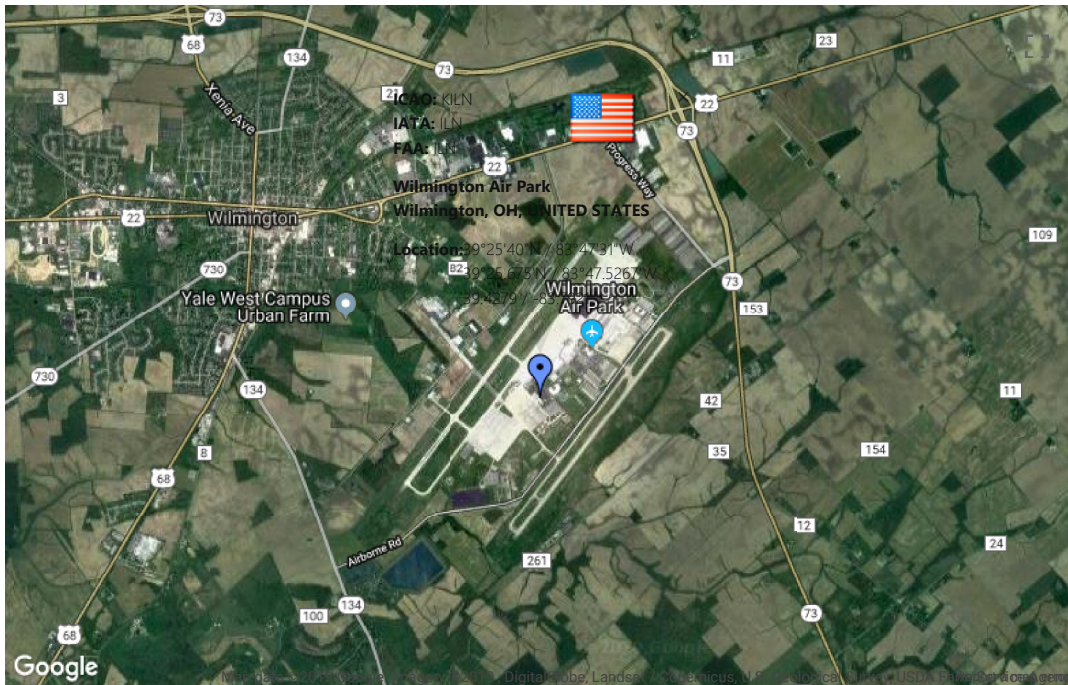
AIRPORT DIAGRAM (PDF)

IAPs (Instrument Approach Procedures)

- ILS OR LOC RWY 04L (PDF)
- ILS OR LOC RWY 04R (PDF)
- ILS OR LOC RWY 22R (PDF)
- ILS OR LOC RWY 22L (PDF)
- ILS RWY 22L (CAT II) (PDF)
- ILS RWY 22R (CAT II - III) (PDF)
- RNAV (GPS) RWY 04L (PDF)
- RNAV (GPS) RWY 22R (PDF)
- TAKEOFF MINIMUMS (PDF)
- ALTERNATE MINIMUMS (PDF)

Legends & General Information

Airport Diagram Legend



© 2007-2019 Dauntless Aviation, all rights reserved
 Information provided via PilotNav comes from a variety of official and unofficial data sources. As errors are possible, do not use PilotNav for primary flight planning purposes. Verify any information that you receive via PilotNav with current and canonical charts and other official documents. The material in this database is subject to database copyrights held by Dauntless Aviation and may not be copied without the express permission of Dauntless Aviation - licenses for use of part of all of this data are available for purchase; enquire via the Dauntless Aviation helpdesk. A number of mechanisms and markers exist in the database to protect against and identify infringement / copyright. Automated queries against this website are strictly prohibited, and all activity is logged and analyzed.