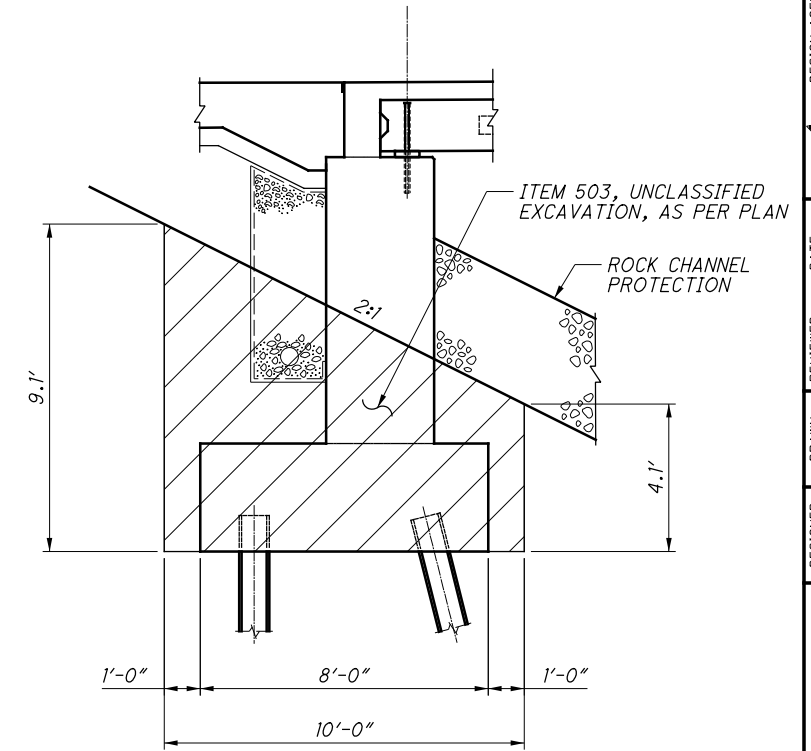


CALC BY: TVB 4/28/2021
 CKD BY: SJR 1/12/2022

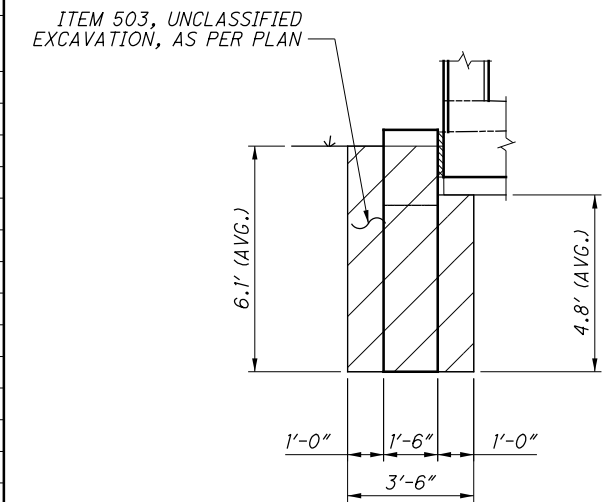
ESTIMATED QUANTITIES

ITEM	ITEM EXT.	TOTAL	UNIT	DESCRIPTION	ABUTMENT	SUPERSTRUCTURE	GENERAL	SEE SHEET
202	11003	LS		STRUCTURE REMOVED, OVER 20 FOOT SPAN, AS PER PLAN			LS	2/24
503	11100	LS		COFFERDAMS AND EXCAVATION BRACING			LS	
503	21101	230	CY	UNCLASSIFIED EXCAVATION, AS PER PLAN	230			4/24
505	11100	LS		PILE DRIVING EQUIPMENT MOBILIZATION			LS	
507	00100	1045	FT	STEEL PILES HP10X42, FURNISHED	1045			
507	00150	935	FT	STEEL PILES HP10X42, DRIVEN	935			
507	93300	22	EACH	STEEL POINTS OR SHOES	22			
509	10000	23,709	POUND	EPOXY COATED REINFORCING STEEL	15,512	5,923	2,274	
511	31610	34	CY	CLASS QC2 CONCRETE, SUPERSTRUCTURE		34		
511	34448	7	CY	CLASS QC2 CONCRETE, BRIDGE DECK (PARAPET)			7	
511	43512	151	CY	CLASS QC1 CONCRETE WITH QC/QA, ABUTMENT INCLUDING FOOTING	151			
511	51511	14	CY	CLASS QC2 CONCRETE, SIDEWALK, AS PER PLAN		10	4	16/24
512	10050	126	SY	SEALING OF CONCRETE SURFACES (NON-EPOXY)		54	72	
512	10100	225	SY	SEALING OF CONCRETE SURFACES (EPOXY-URETHANE)	129	96		
512	44400	6	SY	TYPE B WATERPROOFING		6		
512	75010	677	SF	SPECIAL - SEALING, MISC.: ARCHITECTURAL STAINING			677	3/24
515	12031	9	EACH	PRESTRESSED CONCRETE COMPOSITE BOX BEAM BRIDGE MEMBERS, LEVEL 1, CB17-48, AS PER PLAN (LENGTH = 42.92')		9		14 & 15/24
516	12302	37	FT	STRIP SEAL EXPANSION JOINT ANCHORED WITH ELASTOMERIC CONCRETE	37			
516	12310	106	LB	SIDEWALK COVER PLATE	106			
516	13600	94	SF	1" PREFORMED EXPANSION JOINT FILLER	94			
516	13900	54	SF	2" PREFORMED EXPANSION JOINT FILLER	54			
516	43101	36	EACH	ELASTOMERIC BEARING WITH INTERNAL LAMINATES ONLY (NEOPRENE), AS PER PLAN (6"x9"x1.349)	36			15/24
517	75120	88	FT	RAILING (CONCRETE PARAPET WITH TWIN STEEL TUBE RAILING)		88		
518	21200	39	CY	POROUS BACKFILL WITH GEOTEXTILE FABRIC	39			
518	40000	101	FT	6" PERFORATED CORRUGATED PLASTIC PIPE	101			
518	40010	40	FT	6" NON-PERFORATED CORRUGATED PLASTIC PIPE, INCLUDING SPECIALS	40			
526	25000	192	SY	REINFORCED CONCRETE APPROACH SLABS (T=15")			192	
526	90010	68	FT	TYPE A INSTALLATION			68	
SPECIAL	530E0200	LS		SPECIAL - STRUCTURES: VIBRATION MONITORING			LS	2/24
SPECIAL	530E13000	789	SF	SPECIAL - FORM LINER			789	3/24
846	00110	29	CF	POLYMER MODIFIED ASPHALT EXPANSION JOINT SYSTEM			29	

△ REVISED 02/02/23



TYPICAL ABUTMENT SECTION
 LENGTH = 44.83'



TYPICAL WINGWALL SECTION
 LENGTH = 3.94' (AVG.)

ITEM 503 UNCLASSIFIED EXCAVATION, AS PER PLAN
 UNCLASSIFIED EXCAVATION SHALL BE IN ACCORDANCE WITH CMS ITEM 503. THE BACKFILL MATERIAL SHALL BE PLACED AND COMPACTED IN 6" LIFTS.

N:\016\08372 - East Palestine Park Dr. Bridge Replacement\11896\Design\Structures\COPAR_0005C_Sheets\PAR_0005C_S0001.dgn Sheet 2/2/2023 3:55:44 PM wruggles

DESIGN AGENCY: **ms consultants, inc.**
 333 E. Federal Street
 Youngstown, Ohio 44503

DATE: 01/31/22
 REVIEWED BY: WER
 DRAWN BY: TVB
 CHECKED BY: TVB
 DESIGNED BY: TVB

STRUCTURE FILE NUMBER: 1560346
 REVISION NUMBER: WER

ESTIMATED QUANTITIES
 PARK DRIVE BRIDGE OVER
 LESLIE RUN

COL - PARK DRIVE
 PID No. 111896

4 / 24

26
58