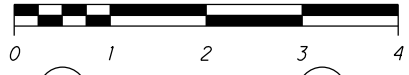


**STATE DETOUR**  
SCALE IN MILES

**LOCAL DETOUR**  
SCALE IN MILES

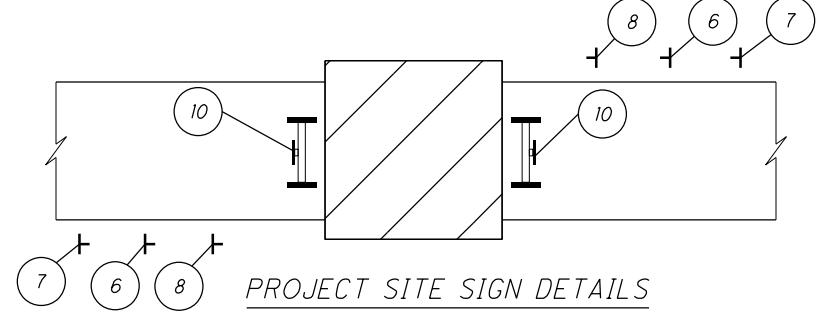
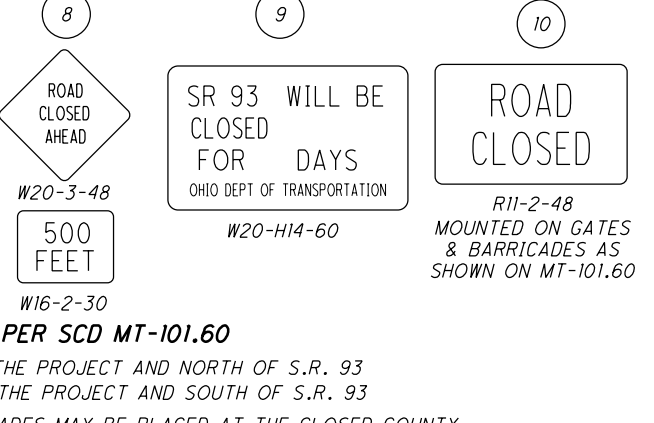
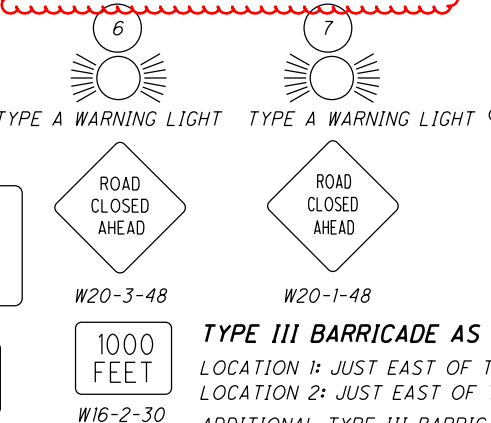
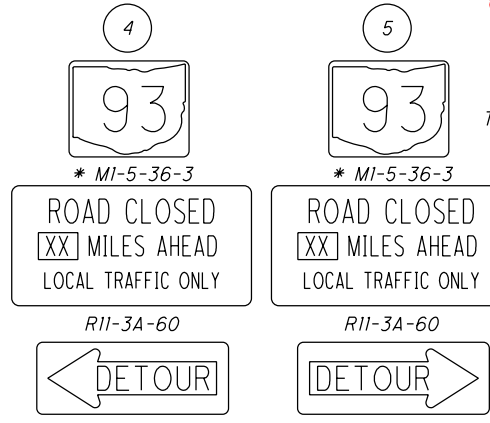
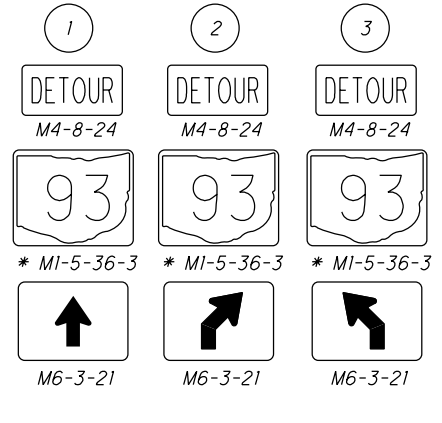
DETOUR ARROWS



LENGTH OF DETOUR = 27.0 MILES  
LENGTH OF NORMAL ROUTING = 14.2 MILES  
ADDED LENGTH = 12.8 MILES



LENGTH OF DETOUR = 3.0 MILES  
LENGTH OF NORMAL ROUTING = 1 MILES  
ADDED LENGTH = 3.9 MILES



\* - ODOT SUPPLIED SIGN (STATE ROUTE NUMBER SIGN ONLY ESTIMATED 18 TOTAL)  
XX - CONTRACTOR IS RESPONSIBLE TO MEASURE AND INDICATED DISTANCE, LENGTH, & DATE ON SIGN

**TYPE III BARRICADE AS PER SCD MT-101.60**  
LOCATION 1: JUST EAST OF THE PROJECT AND NORTH OF S.R. 93  
LOCATION 2: JUST EAST OF THE PROJECT AND SOUTH OF S.R. 93  
ADDITIONAL TYPE III BARRICADES MAY BE PLACED AT THE CLOSED COUNTY OR TOWNSHIP ROAD NEAREST TO THE PROJECT AT THE DIRECTION OF THE PROJECT ENGINEER. ALL ITEMS INCLUDING SIGN AND BARRICADES SHALL BE INCLUDED IN THE LUMP SUM BID FOR ITEM 614 MAINTAINING TRAFFIC. SEE SCD MT-101.60 FOR ADDITIONAL BARRICADE DETAILS.

**ITEM 614, MAINTAINING TRAFFIC (NOTICE OF CLOSURE SIGN)**

NOTICE OF CLOSURE SIGNS (W20-H13) SHALL BE ERECTED BY THE CONTRACTOR PRIOR TO THE SCHEDULED ROAD OR RAMP CLOSURE IN ACCORDANCE WITH THE NOTICE OF CLOSURE TIME TABLE BELOW. (AT THE APPROVAL OF THE ENGINEER, PORTABLE CHANGEABLE MESSAGE SIGNS MAY BE USED IN LIEU OF THE STANDARD FLATSHEET SIGN FOR CLOSURE DURATIONS OF LESS THAN 1 WEEK.

THE SIGNS SHALL BE ERECTED ON THE RIGHT-HAND SIDE OF THE ROAD/RAMP FACING TRAFFIC. THEY SHALL BE PLACED SO AS NOT TO INTERFERE WITH THE VISIBILITY OF ANY OTHER TRAFFIC CONTROL SIGNS. ON ROADWAYS, THEY SHOULD BE ERECTED AT OR NEAR THE POINT OF CLOSURE. THE SIGNS MAY BE ERECTED ANYWHERE ON RAMPS AS LONG AS THEY ARE VISIBLE TO THE MOTORISTS USING THE RAMP. ON ENTRANCE RAMPS, THE SIGN SHALL BE ERECTED WELL IN ADVANCE OF THE MERGE AREA TO AVOID DISTRACTING MOTORISTS.

NOTICE OF CLOSURE SIGN TIME TABLE		
ITEM	DURATION OF CLOSURE	SIGN DISPLAYED TO PUBLIC
RAMP &	>=2 WEEKS	14 CALENDAR DAYS PRIOR TO CLOSURE
ROAD	> 12 HOURS & < 2 WEEKS	7 CALENDAR DAYS PRIOR TO CLOSURE
CLOSURES	< 12 HOURS	2 BUSINESS DAYS PRIOR TO CLOSURE

THE SIGN SHALL DISPLAY THE DATE OF THE CLOSURE IN MMM-DD FORMAT AND THE NUMBER OF DAYS OF THE CLOSURE. THE LAST LINE OF THE W20-H13 SIGN LISTS A PHONE NUMBER WHICH A MOTORIST MAY CALL FOR ADDITIONAL INFORMATION. THIS IS TO BE A SPECIFIC OFFICE WITHIN THE DISTRICT RATHER THAN THE GENERAL SWITCHBOARD NUMBER.

ALL WORKS AND TRAFFIC CONTROL DEVICES SHALL BE IN ACCORDANCE WITH CMS 614 AND OTHER APPLICABLE PORTIONS OF THE SPECIFICATIONS, AS WELL AS THE OHIO MANUAL OF UNIFORM TRAFFIC CONTROL DEVICES. PAYMENT FOR ALL LABOR, EQUIPMENT AND MATERIALS SHALL BE INCLUDED IN THE LUMP SUM CONTRACT PRICE FOR ITEM 614, MAINTAINING TRAFFIC, UNLESS SEPARATELY ITEMIZED IN THE PLAN.

**ITEM 614 DETOUR SIGNING, AS PER PLAN**

THE CONTRACTOR SHALL SUPPLY, ERECT, MAINTAIN, AND REMOVE THE DETOUR SIGNING. ROUTE SIGNS IN THIS PLAN DESIGNATED AS ODOT SUPPLIED WILL BE PICKED UP FROM AND RETURNED TO THE ODOT DISTRICT 5 OFFICE LOCATED AT 9600 JACKSONTOWN ROAD, JACKSONTOWN, OHIO 43030 BY THE CONTRACTOR. THE CONTRACTOR SHALL NOTIFY THE DISTRICT 5 ROADWAY SERVICES MANAGER AT 740-323-4400 A MINIMUM OF SEVEN DAYS PRIOR TO PICK UP OF ALL ROUTE SIGNS DESIGNATED IN THIS PLAN AS ODOT SUPPLIED. PAYMENT FOR ALL MATERIAL, LABOR, AND EQUIPMENT TO PERFORM THIS WORK SHALL BE INCLUDED IN THE LUMP SUM BID PRICE FOR ITEM 614 - DETOUR SIGNING, AS PER PLAN.

**ITEM 614 MAINTAINING TRAFFIC**

TRAFFIC MAY BE DETOURED AS PER PROPOSAL NOTE 124. DAMAGES SHALL BE AS PER PROPOSAL NOTE 124 FOR EACH CALENDAR DAY THE ROADWAY REMAINS CLOSED TO TRAFFIC BEYOND THE SPECIFIED TIME. THE CONTRACTOR SHALL PROVIDE, ERECT AND MAINTAIN STANDARD 48x30 INCHES ROAD CLOSED SIGNS, SIGN SUPPORTS, BARRICADES, GATES AND LIGHTS, AS DETAILED IN SCD MT-101.60 AT THE FOLLOWING LOCATIONS DURING PERIODS IN WHICH THE AFFECTED ROADS ARE CLOSED TO TRAFFIC.

SR. 93: JUST WEST OF BRIDGE NO. COS-93-1576  
 SR. 93: JUST NORTH EAST OF BRIDGE NO. COS-93-1576

THE CONTRACTOR SHALL PROVIDE, ERECT AND MAINTIAN SIGNS AND SIGN SUPPORT, AS DETAILED IN THE OHIO MANUAL OF UNIFORM TRAFFIC CONTROL DEVICES, AND TYPE III BARRICADES OF THE TYPE AND LOCATION AS FOLLOWS:

TYPE III BARRICADES  
 - SR. 93 STA. 829+40.00  
 - SR. 93 STA. 833+60.00

ALL WORKS AND TRAFFIC CONTROL DEVICES SHALL BE IN ACCORDANCE WITH CMS 614 AND OTHER APPLICABLE PORTIONS OF THE SPECIFICATIONS, AS WELL AS THE OHIO MANUAL OF UNIFORM TRAFFIC CONTROL DEVICES. PAYMENT FOR ALL LABOR, EQUIPMENT AND MATERIALS SHALL BE INCLUDED IN THE LUMP SUM CONTRACT PRICE FOR ITEM 614, MAINTAINING TRAFFIC, UNLESS SEPARATELY ITEMIZED IN THE PLAN.

**A+B BIDDING CONTRACT TABLE**

USE THE FOLLOWING INFORMATION IN COMBINATION WITH PROPOSAL NOTE A+B BIDDING WITH: THE CONTRACTOR WILL BID THE NUMBER OF CALENDAR DAYS TO COMPLETE THE PROJECT AS LISTED IN THE PROPOSAL. THE CONTRACTOR SHALL BEGIN CONSTRUCTION NO EARILER THEN MAY 21, 2020 AND CONSTRUCTION SHALL BE COMPLETED NO LATER THEN AUGUST 16, 2020 TO AVOID DELAYS DURING THE SCHOOL YEAR.

CONTRACT SEGMENT LOCATION OF CRITICAL WORK	MINIMUM DAYS	MAXIMUM DAYS	MAXIMUM INCENTIVE DAYS	INCENTIVE/ DISINCENTIVE \$ PER DAY	MAXIMUM INCENTIVE \$
BRIDGE REPLACED @ COS-93-1576 - 2 LANES OF SR. 93 CLOSED WITHIN SHOWN WORK LIMITS	45	70	10	2,400	24,000

**DESIGNATED LOCAL DETOUR ROUTE**

IN ADDITION TO THE OFFICIAL, SIGNED DETOUR ROUTE, A LOCAL ROUTE HAS BEEN DETERMINED TO BE THE SECONDARY, UNSIGNED DETOUR ROUTE OR "DESIGNATED LOCAL DETOUR ROUTE." THIS ROUTE IS SHOWN ON THIS SHEET. DURING THE TIME THAT TRAFFIC IS DETOURED, THE CONTRACTOR SHALL MAINTAIN THIS ROUTE IN A CONDITION WHICH IS REASONABLY SMOOTH AND FREE FROM HOLES, RUTS, RIDGES, BUMPS, DUST, AND STANDING WATER. ONCE THE DETOUR IS REMOVED AND TRAFFIC RETURNED TO ITS NORMAL PATTERN, THE DESIGNATED LOCAL DETOUR ROUTE SHALL BE RESTORED TO A CONDITION THAT IS EQUIVALENT TO THAT WHICH EXISTED PRIOR TO ITS USE FOR THIS PURPOSE. ALL SUCH WORK SHALL BE PERFORMED WHEN AND AS DIRECTED BY THE ENGINEER.

THE FOLLOWING ESTIMATED QUANTITIES ARE PROVIDED FOR USE AS DIRECTED BY THE ENGINEER TO MAINTAIN AND SUBSEQUENTLY RESTORE THE DESIGNATED LOCAL DETOUR ROUTE.

ITEM 410 - TRAFFIC COMPACTED SURFACE, TYPE C.....10 C.Y.  
 ITEM 614 - ASPHALT CONCRETE FOR MAINTAINING TRAFFIC .....10 C.Y.