

ESTIMATED QUANTITIES

CALC. BY: EIW DATE: 10-10-2019 CHKD. BY: PJW DATE: 10-15-2019

PART. **						ALT (X)	ITEM	EXTENSION	TOTAL	UNIT	DESCRIPTION	ABUT.	PIERS	SUPER.	GEN.	SHEET #
01/BRO/BR	02/NFP/BR	03/NFP/BR	04/NFP/BR	05/NFP/BR	06/NFP/BR											
LS							202	11203	LS		PORTIONS OF STRUCTURE REMOVED, OVER 20 FOOT SPAN, AS PER PLAN					3/40 5/40
240							202	22900	240	SY	APPROACH SLAB REMOVED				240	
240							202	23500	240	SY	WEARING COURSE REMOVED				240	
42							202	32801	42	SY	CONCRETE SLOPE PROTECTION REMOVED, AS PER PLAN				42	38/40
LS							503	11100	LS	LS	COFFERDAMS AND EXCAVATION BRACING					
286							503	21101	286	CY	UNCLASSIFIED EXCAVATION, AS PER PLAN	228	58			13/40
262207							509	10001	262207	LB	EPOXY COATED REINFORCING STEEL, AS PER PLAN	13094		226303	22810	3/40 16/40 17/40
500							509	20001	500	LB	REINFORCING STEEL, REPLACEMENT OF EXISTING REINFORCING STEEL, AS PER PLAN	500				3/40
492							510	10000	492	EACH	DOWEL HOLES WITH NONSHRINK, NONMETALLIC GROUT	452			40	
985							511	34447	985	CY	CLASS QC2 CONCRETE WITH QC/QA, BRIDGE DECK, AS PER PLAN			985		24/40 26/40
115							511	34451	115	CY	CLASS QC2 CONCRETE WITH QC/QA, BRIDGE DECK (PARAPET), AS PER PLAN				115	25/40 31/40 32/40
75							511	44111	75	CY	CLASS QC1 CONCRETE, ABUTMENT NOT INCLUDING FOOTING, AS PER PLAN	75				4/40
716							512	10050	716	SY	SEALING OF CONCRETE SURFACES (NON-EPOXY)			614	102	
1606							512	10100	1606	SY	SEALING OF CONCRETE SURFACES (EPOXY-URETHANE)	395		1112	99	
252							512	10600	252	FT	CONCRETE REPAIR BY EPOXY INJECTION		252			
50							512	33000	50	SY	TYPE 2 WATERPROOFING	50				
576							SPECIAL	51271500	576	SY	URETHANE TOP COAT SEALER		576			
256							512	74000	256	SY	REMOVAL OF EXISTING COATINGS FROM CONCRETE SURFACES	256				
		320	320	320	320		513	10201	1600	LB	STRUCTURAL STEEL MEMBERS, LEVEL UF, AS PER PLAN			1600		27/40
5880							513	20000	5880	EACH	WELDED STUD SHEAR CONNECTORS			5880		
9							513	21001	9	EACH	TRIMMING OF BEAM END, AS PER PLAN			9		4/40 23/40
3885							513	21501	3885	LB	REPLACEMENT OF DETERIORATED END CROSSFRAMES, AS PER PLAN			3885		27/40
59223							514	00050	59223	SF	SURFACE PREPARATION OF EXISTING STRUCTURAL STEEL			59223		
59223							514	00056	59223	SF	FIELD PAINTING OF EXISTING STRUCTURAL STEEL, PRIME COAT			59223		
59223							514	00060	59223	SF	FIELD PAINTING STRUCTURAL STEEL, INTERMEDIATE COAT			59223		
59223							514	00066	59223	SF	FIELD PAINTING STRUCTURAL STEEL, FINISH COAT			59223		4/40
49							514	00504	49	MNHR	GRINDING FINES, TEARS, SLIVERS ON EXISTING STRUCTURAL STEEL			49		
31							514	10000	31	EACH	FINAL INSPECTION REPAIR			31		
126							516	10010	126	FT	ARMORLESS PREFORMED JOINT SEAL				126	
132							516	11210	132	FT	STRUCTURAL EXPANSION JOINT INCLUDING ELASTOMERIC STRIP SEAL			132		
38							516	13200	38	SF	1/2" PREFORMED EXPANSION JOINT FILLER	38				
211							516	13600	211	SF	1" PREFORMED EXPANSION JOINT FILLER	211				
39							516	13900	39	SF	2" PREFORMED EXPANSION JOINT FILLER	39				
14							516	44201	14	EACH	(20 X 18 X 3.448) ELASTOMERIC BEARING WITH INTERNAL LAMINATES AND LOAD PLATE (22.75 X 25 X 1.75) (NEOPRENE), AS PER PLAN			14		23/40
9							516	46700	9	EACH	RESET BEARING			9		22/40
LS							516	47001	LS		JACKING AND TEMPORARY SUPPORT OF SUPERSTRUCTURE, AS PER PLAN					4/40
71							518	21200	71	CY	POROUS BACKFILL WITH GEOTEXTILE FABRIC	71				
5184							SPECIAL	51900100	5184	SF	COMPOSITE FIBER WRAP SYSTEM (SEE PROPOSAL NOTE 519)		5184			4/40 15/40
383							519	11101	383	SF	PATCHING CONCRETE STRUCTURE, AS PER PLAN	228	155			9/40
427							526	30011	427	SY	REINFORCED CONCRETE APPROACH SLABS WITH QC/QA (T=17"), AS PER PLAN				427	36/40 37/40
126							526	90031	126	FT	TYPE C INSTALLATION, AS PER PLAN				126	36/40 37/40
42							601	21001	42	SY	CONCRETE SLOPE PROTECTION, AS PER PLAN				42	38/40
829							607	39994	829	FT	TEMPORARY VANDAL FENCE, TYPE B				829	
FENCE ALTERNATES																
960						X	607	39900	960	FT	VANDAL PROTECTION FENCE, 6' STRAIGHT, COATED FABRIC (ALTERNATE 1)				960	
960						X	607	98000	960	FT	FENCE, MISC.: DECORATIVE VANDAL PROTECTION FENCE, AS PER PLAN (ALTERNATE 2)				960	4/40

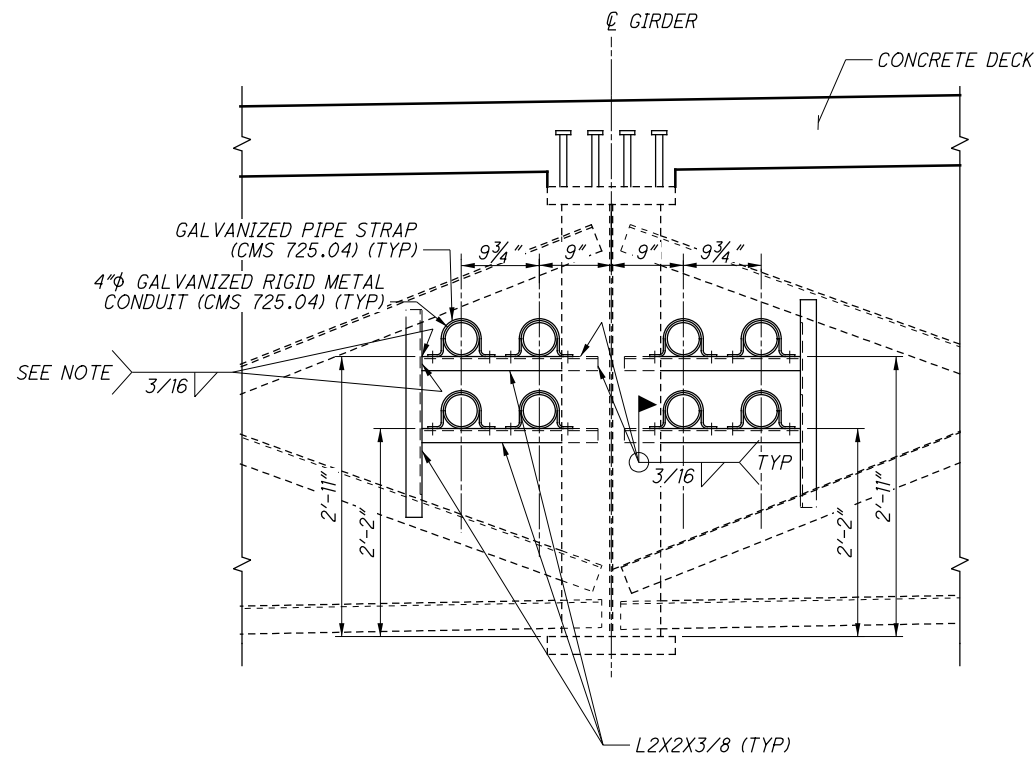
P:\000T\20170709.000 District 12 - CUY-021-09.09\CUY\104000\Design\Structures\CUY02L0909C_Sheets\02L0909C_S0001.dgn_Sheet 10/20/2021 2:31:0 PM ewellman

DESIGN AGENCY: OSBORN ENGINEERING CLEVELAND, OHIO
 DATE: 10/28/19
 REVIEWED: SMK
 DRAWN: MJD
 DESIGNED: EIW
 CHECKED: PJW
 STRUCTURE FILE NUMBER: 1813234
 ESTIMATED QUANTITIES
 BRIDGE NO. CUY-021-0909
 S.R. 21 (BRECKSVILLE ROAD) OVER I-480
 CUY-021-09.09
 PID No. 104000
 6/40
 43/77

7 REVISION - 10/20/2021

** SEE NOTE ON SHEET 3/77 FOR PARTICIPATION SPLIT ASSIGNMENTS

P:\000T\20170709.000 District 12 - CUY-021-09.09\Design\104000\Design\Structures\02L0909C\Sheets\02L0909C-ST001.dgn Sheet 2 10/20/2021 2:33:49 PM ewellman



**CONDUIT SUPPORT DETAIL AT INTERMEDIATE CROSSFRAMES
(TYPICAL 29 LOCATIONS)**

NOTE: WELD HORIZONTAL L2X2X3/8 TO VERTICAL L2X2X3/8 WITH A 3/16" CONTINUOUS FILLET WELD ALONG THE TOP SIDE OF THE HORIZONTAL LEG AND INSIDE OF THE VERTICAL LEG.

NOTES:

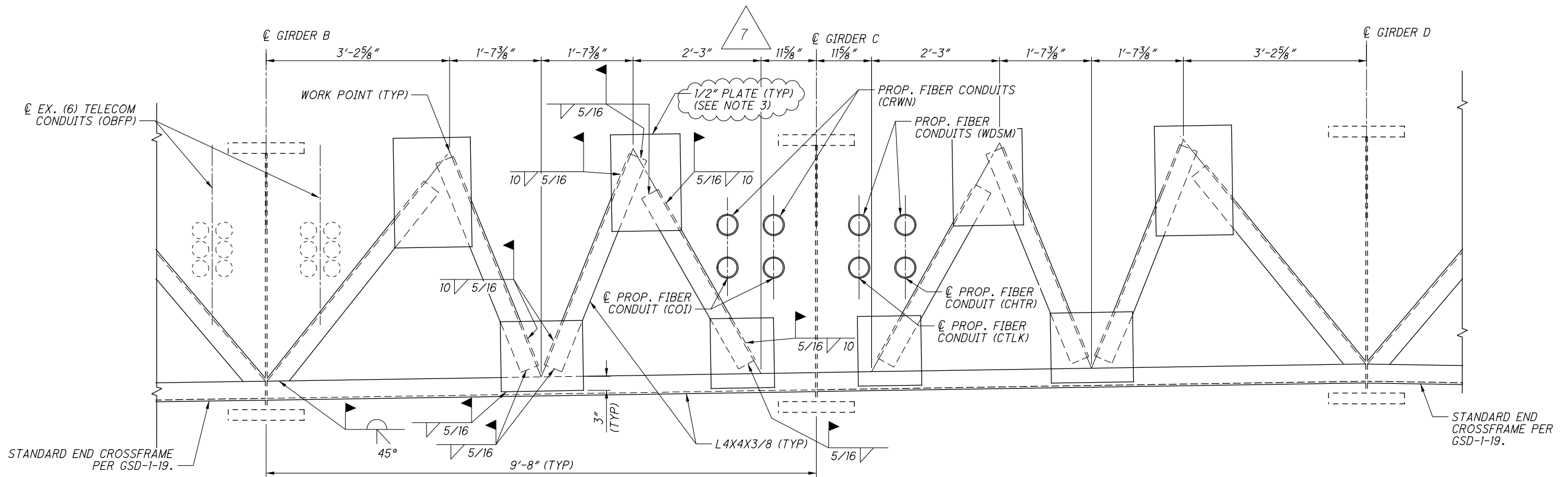
1. CONDUIT SUPPORT ANGLES SHALL BE INCLUDED WITH ITEM 513 - STRUCTURAL STEEL MEMBERS, LEVEL UF, AS PER PLAN FOR PAYMENT.
2. GALVANIZED PIPE STRAPS SHALL BE INCLUDED WITH ITEM 625 - CONDUIT, 4", 725.04, AS PER PLAN FOR PAYMENT.
3. ALL STEEL FOR END CROSSFRAMES EXCEPT TOP 1/2" PLATES SHALL BE INCLUDED WITH ITEM 513 - REPLACEMENT OF DETERIORATED END CROSSFRAMES, AS PER PLAN FOR PAYMENT. TOP 1/2" PLATES ARE INCLUDED WITH ITEM 516 - STRUCTURAL EXPANSION JOINT WITH ELASTOMERIC STRIP SEAL FOR COATING AND PAYMENT.
4. FOR ADDITIONAL END CROSSFRAME NOTES AND DETAILS, SEE ODOT STD DWG GSD-1-19.

UTILITY ABBREVIATIONS

- CEI - FIRST ENERGY
- CHTR - CHARTER COMMUNICATIONS
- COI - CITY OF INDEPENDENCE
- CRWN - CROWN CASTLE
- CTLK - CENTURYLINK
- DEO - DOMINION ENERGY OHIO
- OBFP - AT&T OHIO
- WDSM - WINDSTREAM

LEGEND

- CJ - CONSTRUCTION JOINT
- PG - PROFILE GRADE
- * - PHASE 1 BAR
- ** - PHASE 2 BAR



**SPECIAL END CROSSFRAMES
(TYPICAL 4 LOCATIONS)**

7 REVISION - 10/20/2021

CROSSFRAME DETAILS		BRIDGE NO. CUY-021-0909 S.R. 21 (BRECKSVILLE ROAD) OVER I-480
DESIGNED EIW	CHECKED P-JW	DRAWN ETW
REVIEWED SMK	DATE 10/28/19	DESIGN AGENCY OSBORN ENGINEERING CLEVELAND, OHIO
		STRUCTURE FILE NUMBER 1813234
PID No. 104000		CUY-021-09.09
27/40		64 77