

October 25, 2018

Mr. Eric M. Kallio, PE  
District Roadway Engineer  
ODOT District 12  
5500 Transportation Boulevard  
Garfield Heights, Ohio 44125  
[eric.kallio@dot.ohio.gov](mailto:eric.kallio@dot.ohio.gov)

Re: Report of Pavement Coring  
CUY-3-6.22  
PID No. 105907, Task Order No.: 30625-D12-12  
Parma, Cuyahoga County, Ohio  
**PSI Project Number: 0142-1814**

Dear Mr. Kallio:

Enclosed is PSI's Report for the Pavement Cores obtained from the site at the above-referenced project. PSI's services for this project were performed in accordance with PSI's Proposal No. 0142-256509, dated September 18, 2018. Authorization to perform this exploration was in the form of an emailed authorization letter to PSI acknowledged by Mr. Eric Kallio, P.E., District Roadway Engineer of ODOT District 12, on September 24, 2018.

The scope of services for this project included pavement coring at seventeen (17) specified locations, taking photographs of the existing pavement condition, measuring the thickness and condition of the pavement sections, and taking photographs of each core. Testing of the core samples was not performed.

The number and locations of the pavement cores were selected by the representatives of ODOT D-12. Enclosed with this report are the following:

- Pavement Core Location Plans, showing the approximate location of each pavement core;
- Core Photo Logs showing the core number, approximate thickness, composition, and condition of the pavement cores; and
- Pavement Photo Logs showing the existing pavement condition at core locations.

PSI assumes no responsibility for interpretation made by others. The collected pavement core samples are available for inspection. The cores will be retained for a period of 30 days after the date of this report and disposed thereof.



PSI appreciates the opportunity to have been of service to you on this project. If we can be of further assistance, please do not hesitate to contact us at 216-447-1335.

Respectfully submitted,

**PROFESSIONAL SERVICE INDUSTRIES, INC.**

Joseph Corrigan  
Project Manager

A. Veeramani, P.E.  
Vice President

Enclosures:

Pavement Core Location Plan  
Core and Pavement Photo Logs with Core Descriptions



Station No.: 195+30, South Bound, Lat:41.368509°, Long:-81.734800°



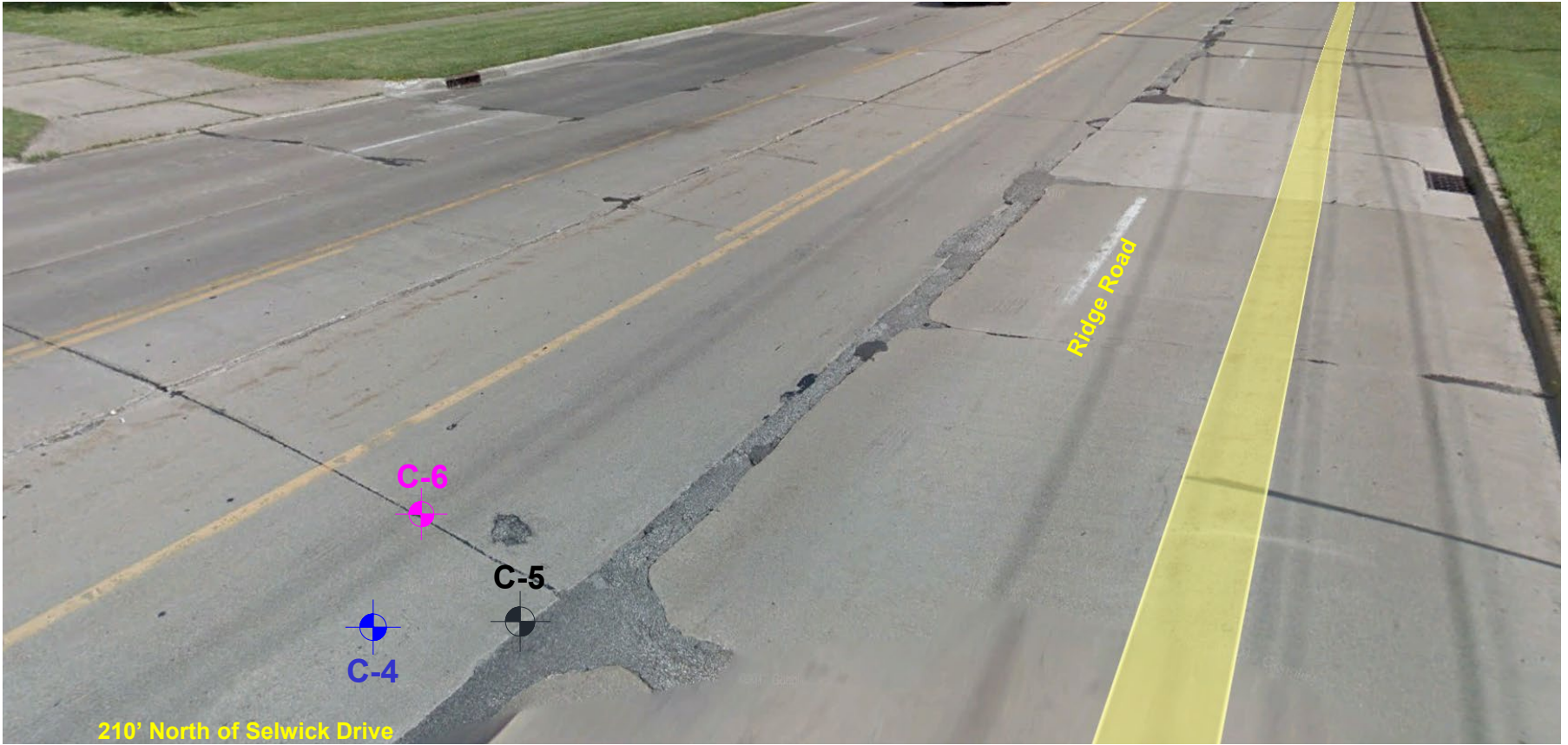
Pavement Coring at Cuy-3-6.22  
PID No.: 105907, Task Order No.: 30625-D-12-12  
Cuyahoga County, Ohio

Date: 10/1/18

Drawn By: ST

Core Location Plan

PSI Project No.:0142-1814



Station No.: 221+65, North Bound, Lat:41.374335°, Long:-81.734742°



Pavement Coring at Cuy-3-6.22  
PID No.: 105907, Task Order No.: 30625-D-12-12  
Cuyahoga County, Ohio

Date: 10/1/18

Drawn By: ST

Core Location Plan

PSI Project No.:0142-1814



Station No.: 243+90, South Bound, Lat:41.382016°, Long:-81.734749°



Pavement Coring at Cuy-3-6.22  
PID No.: 105907, Task Order No.: 30625-D-12-12  
Cuyahoga County, Ohio

Date: 10/1/18

Drawn By: ST

Core Location Plan

PSI Project No.:0142-1814



255' South from Buckingham Dr.

6485



Station No.: 269+61, South Bound, Lat:41.388997°, Long:-81.734687°



Pavement Coring at Cuy-3-6.22  
PID No.: 105907, Task Order No.: 30625-D-12-12  
Cuyahoga County, Ohio

Date: 10/1/18

Core Location Plan

Drawn By: ST

PSI Project No.:0142-1814



Station No.: 295+40, North Bound, Lat:41.395945°, Long:-81.734531°



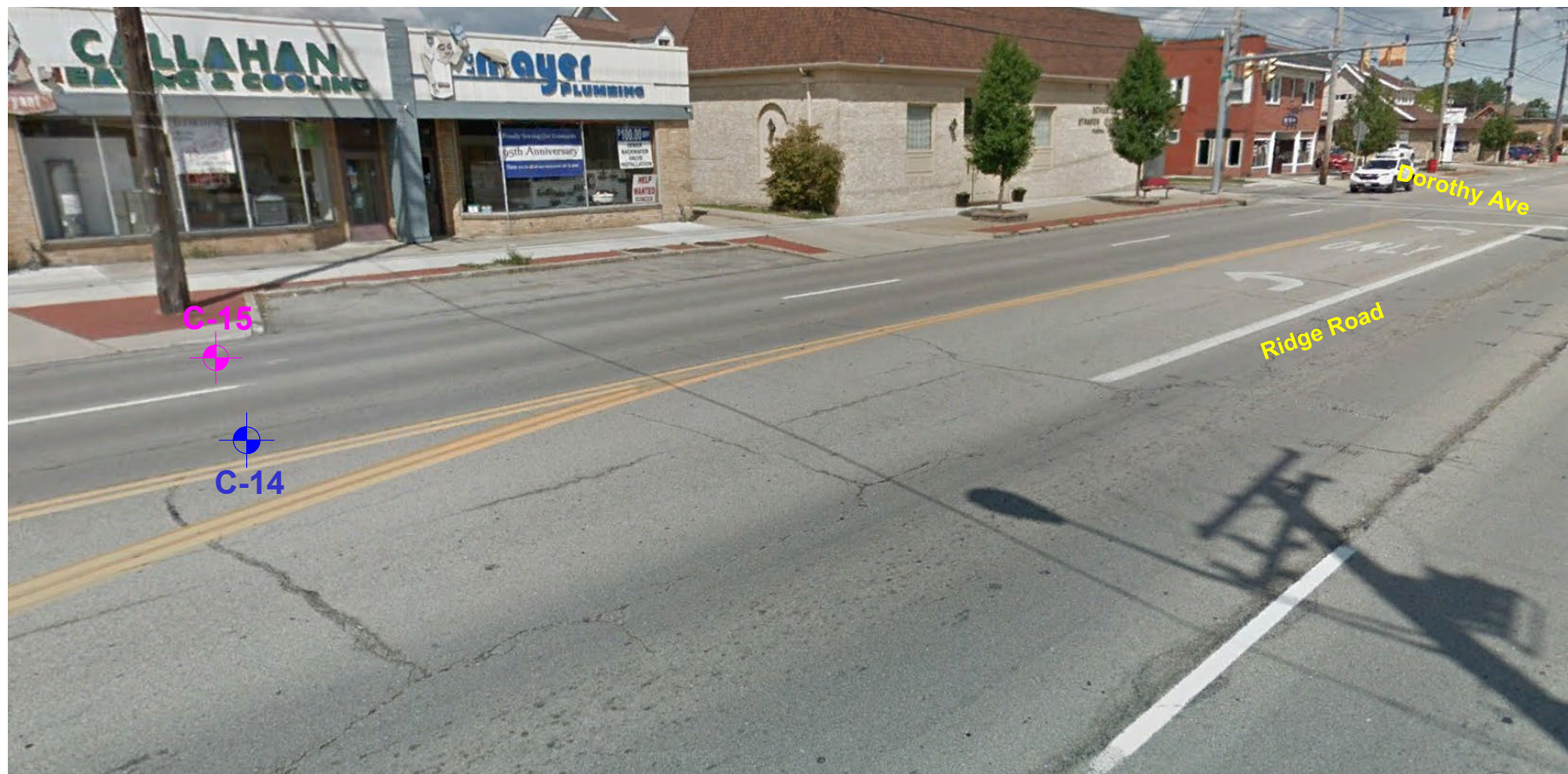
Pavement Coring at Cuy-3-6.22  
PID No.: 105907, Task Order No.: 30625-D-12-12  
Cuyahoga County, Ohio

Date: 10/1/18

Drawn By: ST

Core Location Plan

PSI Project No.:0142-1814



Station No.: 316+60, South Bound, Lat:41.401762°, Long:-81.734655°



Pavement Coring at Cuy-3-6.22  
PID No.: 105907, Task Order No.: 30625-D-12-12  
Cuyahoga County, Ohio

Date: 10/1/18

Drawn By: ST

Core Location Plan

PSI Project No.:0142-1814





Station No.: 340+45, North Bound, Lat:41.408369°, Long:-81.734470°



Pavement Coring at Cuy-3-6.22  
PID No.: 105907, Task Order No.: 30625-D-12-12  
Cuyahoga County, Ohio

Date: 10/1/18

Drawn By: ST

Core Location Plan

PSI Project No.:0142-1814

# Core Photo: C-1



C-1 (8 1/2" Concrete)

## Pavement Photo



### Core Info

Layers	Core Composition & Thickness (In)			Location
	Asphalt Concrete	Red Brick	Concrete	Latitude : 41.368509° Longitude : -81.734800°
				Remarks
A	-	-	8 1/2"	Good Condition



Pavement Coring  
Ridge Road  
Task Order 30625-D12-12 CUY 3-6.22  
Parma, Cuyahoga County

Date: 10/22/2018

Taken By: JC

Scale: NA

### Pavement & Core Photo Log

PSI Project No.:  
0142-1814

## Core Photo: C-2



C-2 (5" Concrete, with 3 1/2" Asphalt Patch)

## Pavement Photo



### Core Info

Layers	Core Composition & Thickness (In)			Location
	Asphalt Concrete	Red Brick	Concrete	Latitude : 41.368509° Longitude : -81.734800°
				Remarks
A	-	-	5"	Good Condition



Pavement Coring  
Ridge Road  
Task Order 30625-D12-12 CUY 3-6.22  
Parma, Cuyahoga County

Date: 10/22/2018

Taken By: JC

Scale: NA

Pavement & Core  
Photo Log

PSI Project No.:  
0142-1814

## Core Photo: C-3



C-3 (8 1/2" Concrete, with 2 1/2" Asphalt Patch)

## Pavement Photo



### Core Info

Layers	Core Composition & Thickness (In)			Location
	Asphalt Concrete	Red Brick	Concrete	Latitude : 41.368509° Longitude : -81.734800°
				Remarks
A	-	-	8 1/2"	Broken, Fair Condition, Asphalt Patch



Pavement Coring  
Ridge Road  
Task Order 30625-D12-12 CUY 3-6.22  
Parma, Cuyahoga County

Date: 10/22/2018

Taken By: JC

Scale: NA

Pavement & Core  
Photo Log

PSI Project No.:  
0142-1814

# Core Photo: C-4



C-4 (9" Concrete)

## Pavement Photo



### Core Info

Layers	Core Composition & Thickness (In)			Location
	Asphalt Concrete	Red Brick	Concrete	Latitude : 41.374335° Longitude : -81.734742°
				Remarks
A	--	--	9"	Good Condition, Rebar



Pavement Coring  
Ridge Road  
Task Order 30625-D12-12 CUY 3-6.22  
Parma, Cuyahoga County

Date: 10/22/2018

Taken By: JC

Scale: NA

### Pavement & Core Photo Log

PSI Project No.:  
0142-1814

## Core Photo: C-5



C-5 (7 3/4" Concrete, with 4" Asphalt Patch)

## Pavement Photo



### Core Info

Layers	Core Composition & Thickness (In)			Location
	Asphalt Concrete	Red Brick	Concrete	Latitude : 41.374335° Longitude : -81.734742°
				Remarks
A	-		7 3/4"	Fair Condition



Pavement Coring  
Ridge Road  
Task Order 30625-D12-12 CUY 3-6.22  
Parma, Cuyahoga County

Date: 10/22/2018

Taken By: JC

Scale: NA

Pavement & Core  
Photo Log

PSI Project No.:  
0142-1814

## Core Photo: C-6



C-6 (10" Concrete)

## Pavement Photo



### Core Info

Layers	Core Composition & Thickness (In)			Location
	Asphalt Concrete	Red Brick	Concrete	Latitude : 41.374335° Longitude : -81.734742°
				Remarks
A	-	-	10"	Good Condition



Pavement Coring  
Ridge Road  
Task Order 30625-D12-12 CUY 3-6.22  
Parma, Cuyahoga County

Date: 10/22/2018

Taken By: JC

Scale: NA

Pavement & Core  
Photo Log

PSI Project No.:  
0142-1814

## Core Photo: C-7



C-7 (9" Concrete)

## Pavement Photo



### Core Info

Layers	Core Composition & Thickness (In)			Location
	Asphalt Concrete	Red Brick	Concrete	Latitude : 41.382016° Longitude : -81.734749°
				Remarks
A	--	--	9"	Good Condition



Pavement Coring  
Ridge Road  
Task Order 30625-D12-12 CUY 3-6.22  
Parma, Cuyahoga County

Date: 10/22/2018

Taken By: JC

Scale: NA

### Pavement & Core Photo Log

PSI Project No.:  
0142-1814



## Core Photo: C-8



C-8 (8 1/2" Concrete)

## Pavement Photo



### Core Info

Layers	Core Composition & Thickness (In)				Location
	Asphalt Concrete	Red Brick	LSM	Concrete	Latitude : 41.382016° Longitude : -81.734749°
					Remarks
A	-	-	-	8 1/2"	Broken, Fair Condition



Pavement Coring  
Ridge Road  
Task Order 30625-D12-12 CUY 3-6.22  
Parma, Cuyahoga County

Date: 10/22/2018

Taken By: JC

Scale: NA

Pavement & Core  
Photo Log

PSI Project No.:  
0142-1814

## Core Photo: C-9



C-9 (9" Concrete, with Tar Paper Patch)

## Pavement Photo



### Core Info

Layers	Core Composition & Thickness (In)			Location
	Asphalt Concrete	Red Brick	Concrete	Latitude : 41.382016° Longitude : -81.734749 °
				Remarks
A	-	-	9"	Broken, Fair Condition, Tar Paper Patch



Pavement Coring  
Ridge Road  
Task Order 30625-D12-12 CUY 3-6.22  
Parma, Cuyahoga County

Date: 10/22/2018

Taken By: JC

Scale: NA

Pavement & Core  
Photo Log

PSI Project No.:  
0142-1814

## Core Photo: C-10



C-10 (2" Asphalt Concrete, 9" Concrete)

## Pavement Photo



### Core Info

Layers	Core Composition & Thickness (In)			Location
	Asphalt Concrete	Red Brick	LSM Concrete	Latitude : 41.388997° Longitude : -81.734687°
				Remarks
A	2"	--	--	Good Condition
B	--	--	9"	Good Condition



Pavement Coring  
Ridge Road  
Task Order 30625-D12-12 CUY 3-6.22  
Parma, Cuyahoga County

Date: 10/22/2018

Taken By: JC

Scale: NA

Pavement & Core  
Photo Log

PSI Project No.:  
0142-1814

# Core Photo: C-11



C-11 (3 1/4" Asphalt Concrete, 4 1/4" Red Brick, 10" Concrete)

## Core Info

Layers	Core Composition & Thickness (In)			Location
	Asphalt Concrete	Red Brick	Asphalt Concrete	Latitude : 41.388997° Longitude : -81.734687°
				Remarks
A	3 1/4"	--	--	Good Condition
B	--	4 1/4"	--	Good Condition
C	--	--	10"	Good Condition

## Pavement Photo



Pavement Coring  
Ridge Road  
Task Order 30625-D12-12 CUY 3-6.22  
Parma, Cuyahoga County

Date: 10/22/2018

Taken By: JC

Scale: NA

Pavement & Core  
Photo Log

PSI Project No.:  
0142-1814

# Core Photo: C-12



C-12 (7 1/2" Asphalt Concrete, 4" Concrete)

## Pavement Photo



### Core Info

Layers	Core Composition & Thickness (In)		Location
	Asphalt Concrete	Concrete	Latitude : 41.395945° Longitude : -81.734531°
			Remarks
A	7 1/2"	--	Good Condition
B	--	4"	Fair Condition



Pavement Coring  
Ridge Road  
Task Order 30625-D12-12 CUY 3-6.22  
Parma, Cuyahoga County

Date: 10/22/2018

Taken By: JC

Scale: NA

### Pavement & Core Photo Log

PSI Project No.:  
0142-1814

# Core Photo: C-13



C-13 (3 1/4" Asphalt Concrete, 4" Red Brick, 9" Concrete)

## Core Info

Layers	Core Composition & Thickness (In)			Location
	Asphalt Concrete	Red Brick	Concrete	Latitude : 41.395945° Longitude : -81.734531°
				Remarks
A	3 1/4"	--	--	Good Condition
B	--	4"	--	Good Condition
C	--	--	9"	Broken, Good Condition

## Pavement Photo



Pavement Coring  
Ridge Road  
Task Order 30625-D12-12 CUY 3-6.22  
Parma, Cuyahoga County

Date: 10/22/2018

Taken By: JC

Scale: NA

Pavement & Core  
Photo Log

PSI Project No.:  
0142-1814

# Core Photo: C-14



C-14 (11 1/4" Asphalt Concrete, 2 1/4" Concrete)

## Pavement Photo



### Core Info

Layers	Core Composition & Thickness (In)		Location
	Asphalt Concrete	Concrete	Latitude : 41.401762° Longitude : -81.734655°
			Remarks
A	11 1/4"	-	Good Condition
B	-	2 1/4"	Broken, Good Condition



Pavement Coring  
Ridge Road  
Task Order 30625-D12-12 CUY 3-6.22  
Parma, Cuyahoga County

Date: 10/22/2018

Taken By: JC

Scale: NA

Pavement & Core  
Photo Log

PSI Project No.:  
0142-1814

# Core Photo: C-15



C-15 (3" Asphalt Concrete, 4" Red Brick, 9 1/2" Concrete)

## Core Info

Layers	Core Composition & Thickness (In)			Location
	Asphalt Concrete	Red Brick	Concrete	Latitude : 41.401762° Longitude : -81.734655°
				Remarks
A	3"	--	--	Good Condition
B	--	4"	--	Good Condition
C	--	--	9 1/2"	Good Condition

## Pavement Photo



Pavement Coring  
Ridge Road  
Task Order 30625-D12-12 CUY 3-6.22  
Parma, Cuyahoga County

Date: 10/22/2018

Taken By: JC

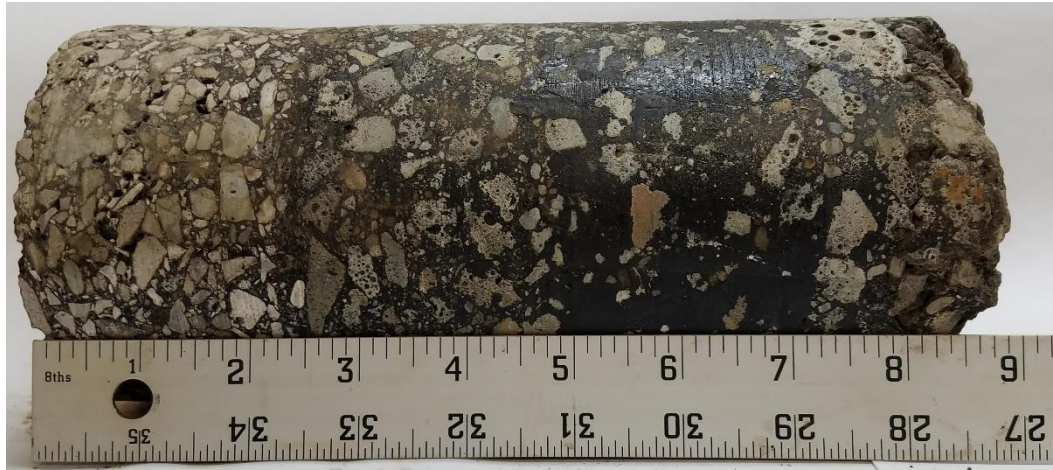
Scale: NA

## Pavement & Core Photo Log

PSI Project No.:  
0142-1814



## Core Photo: C-16



C-16 (8 3/4" Asphalt Concrete)

## Pavement Photo



### Core Info

Layers	Core Composition & Thickness (In)				Location
	Asphalt Concrete	Red Brick	LSM	Concrete	Latitude : 41.408369° Longitude : -81.734470°
					Remarks
A	8 3/4"	-	-	-	Good Condition



Pavement Coring  
Ridge Road  
Task Order 30625-D12-12 CUY 3-6.22  
Parma, Cuyahoga County

Date: 10/22/2018

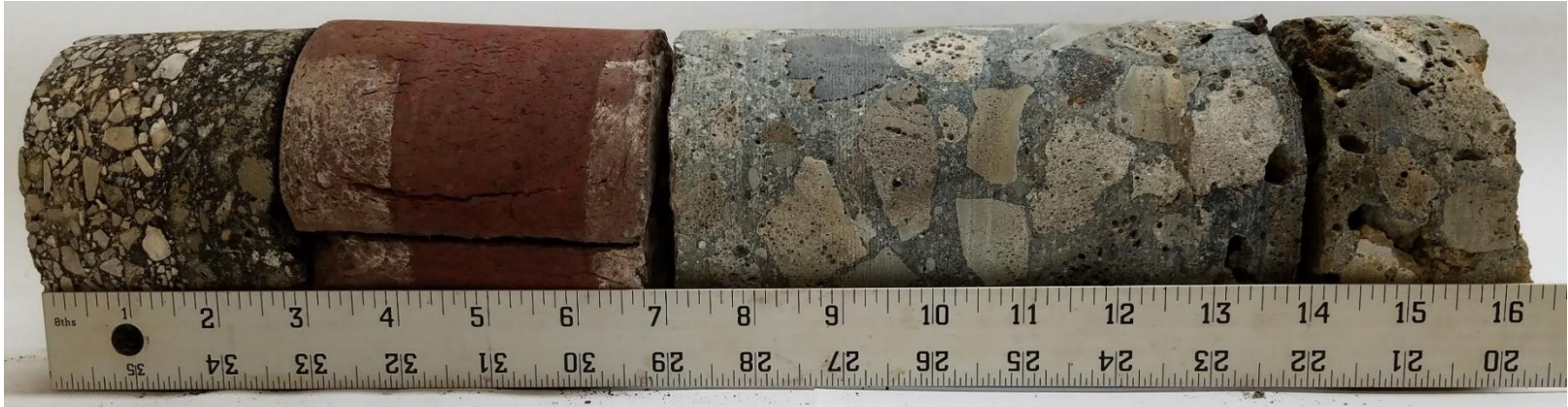
Taken By: JC

Scale: NA

Pavement & Core  
Photo Log

PSI Project No.:  
0142-1814

## Core Photo: C-17



C-17 (3" Asphalt Concrete, 4" Red Brick, 9" Concrete)

### Core Info

Layers	Core Composition & Thickness (In)			Location
	Asphalt Concrete	Red Brick	Concrete	Latitude : 41.408369° Longitude : -81.734470°
				Remarks
A	3"	--	--	Good Condition
B	--	4"	--	Broken, Good Condition
C	--	--	9"	Broken, Good Condition

### Pavement Photo



Pavement Coring  
Ridge Road  
Task Order 30625-D12-12 CUY 3-6.22  
Parma, Cuyahoga County

Date: 10/22/2018

Taken By: JC

Scale: NA

Pavement & Core  
Photo Log

PSI Project No.:  
0142-1814