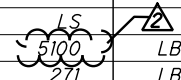
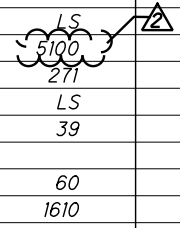


F:\2019\19034 VAR-Dist 12 Cuyahoga Co. Bridge Rehab Designs\ProjectData\109531\Design\Roadway\Sheets\109531GG001.dgn 2/8/2021 2:46:22 PM smorr

SHEET NUMBER							PARTICIPATION		ITEM	ITEM EXT.	GRAND TOTAL	UNIT	DESCRIPTION	SEE SHEET NO.
3-5	6-10	11	19											
												ROADWAY		
								201	11001	LS		CLEARING AND GRUBBING, AS PER PLAN	4	
	25							203	10000	25	CY	EXCAVATION		
	25							203	20000	25	CY	EMBANKMENT		
	1500							607	98000	1500	FT	FENCE, MISC.: CONSTRUCTION FENCE	5	
								SPECIAL	69098400	LS		SITE ACCESS	5	
												EROSION CONTROL		
	25							659	00300	25	CY	TOPSOIL		
	223							659	10000	223	SY	SEEDING AND MULCHING		
	12							659	14000	12	SY	REPAIR SEEDING AND MULCHING		
	0.03							659	20000	0.03	TON	COMMERCIAL FERTILIZER		
	2							659	35000	2	MGAL	WATER		
	10000							832	30000	10000	EACH	EROSION CONTROL		
												TRAFFIC CONTROL		
					237			621	00300	237	EACH	RPM REFLECTOR		
					237			621	54001	237	EACH	RAISED PAVEMENT MARKER REMOVED, AS PER PLAN	10	
					2.11			642	00104	2.11	MILE	EDGE LINE, 6", TYPE 1		
					3.50			642	00204	3.50	MILE	LANE LINE, 6", TYPE 1		
					588			642	01510	588	FT	DOTTED LINE, 6", TYPE 1		
												STRUCTURE REPAIR (CUY-90-0758, SFN 1808567 - LOCATION 9)		
								202	11203			PORTIONS OF STRUCTURE REMOVED, OVER 20 FOOT SPAN, AS PER PLAN	18	
								513	21500			REPLACEMENT OF DETERIORATED END CROSSFRAMES		
								513	21599			STRUCTURAL STEEL FOR REHABILITATION		
								516	47001			JACKING AND TEMPORARY SUPPORT OF SUPERSTRUCTURE, AS PER PLAN	18	
								519	11101			PATCHING CONCRETE STRUCTURE, AS PER PLAN	18	
								519	12300			PATCHING CONCRETE BRIDGE DECK - TYPE B (FOR OVERNIGHT REPAIRS)	18	
								607	39911			VANDAL PROTECTION FENCE, 8' STRAIGHT, COATED FABRIC, AS PER PLAN	18	



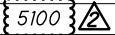
GENERAL SUMMARY


**CUY-90-07.58 REPAIR
PID NO. 109531**

	2/8/21	REVISE ITEM QUANTITY

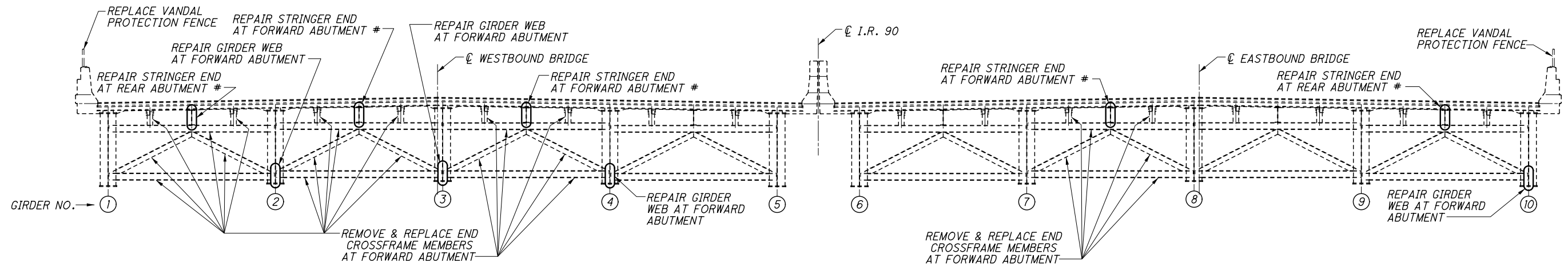
ESTIMATED QUANTITIES

CALCULATED JLS DATED 8/20
 CHECKED dht DATED 8/20

ITEM	ITEM EXT.	TOTAL	UNIT	DESCRIPTION	SUPER.	ABUTS.	GEN'L	SEE SHEET
202	11203	LS		PORTIONS OF STRUCTURE REMOVED, OVER 20 FOOT SPAN, AS PER PLAN			LS	2/10
513	21500	5100 	LB	REPLACEMENT OF DETERIORATED END CROSSFRAMES				
513	21599	271	LB	STRUCTURAL STEEL FOR REHABILITATION				
516	47001	LS		JACKING AND TEMPORARY SUPPORT OF SUPERSTRUCTURE, AS PER PLAN			LS	2/10
519	11101	39	SF	PATCHING CONCRETE STRUCTURE, AS PER PLAN	39			2/10
519	12300	180	SY	PATCHING CONCRETE BRIDGE DECK - TYPE B (FOR OVERNIGHT REPAIRS)	60			2/10
607	39911	1,610	FT	VANDAL PROTECTION FENCE, 8' STRAIGHT, COATED FABRIC, AS PER PLAN	1,610			2/10

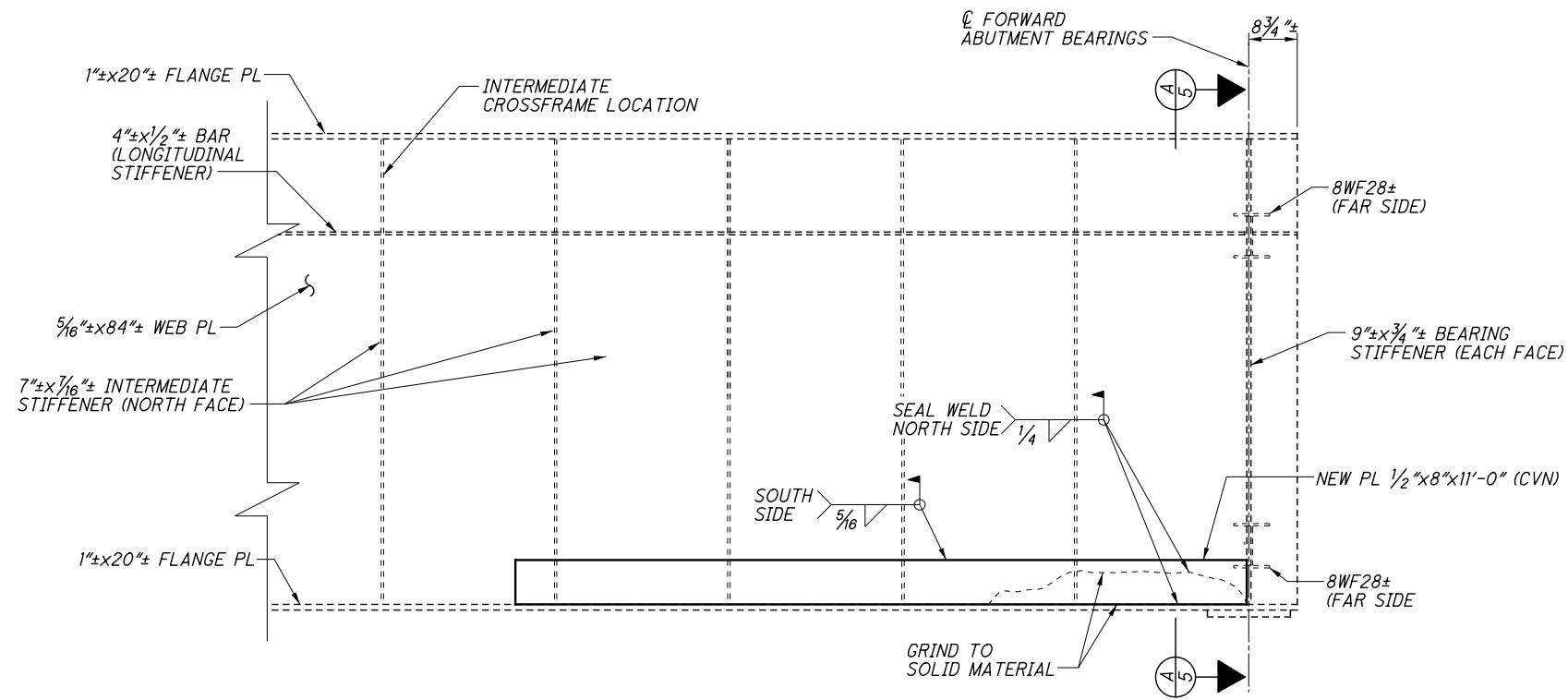
	02/08/21	REVISED QUANTITY

F:\2019\19034 VAR-Dist 12 Cuyahoga Co. Bridge Rehab Designs\ProjectData\109531\Design\Structures\090_07585D003.dgn 2/8/2021 2:38:19 PM jsmith

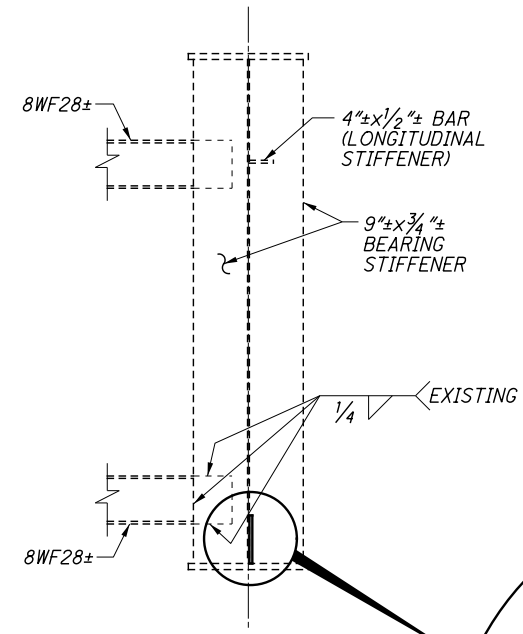


EXISTING DECK TRANSVERSE SECTION
(AT ABUTMENT END CROSSFRAME)

STRINGER ENDS TO BE REPAIRED IN FUTURE REHABILITATION PROJECT.



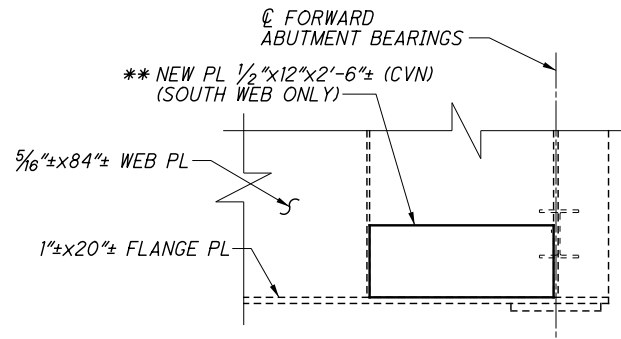
GIRDER 10 REPAIR - F.A.
(LOOKING NORTH)



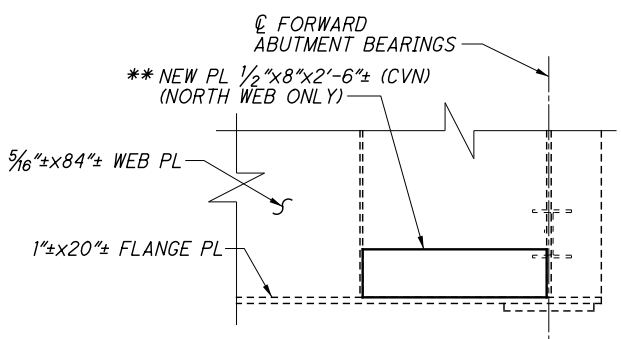
SECTION A-A

NOTES

- CVN:** WHERE A SHAPE OR PLATE IS DESIGNATED (CVN), FURNISH MATERIAL THAT MEETS THE MINIMUM NOTCH TOUGHNESS REQUIREMENTS OF C&S 711.01.
- VANDAL PROTECTION FENCE DETAILS:** SEE SHEET 9/10.
- END CROSSFRAME REPLACEMENT:** SEE SHEET 6/10.
- STEEL FABRICATION SHALL BE LEVEL UP PER 513.03.**



GIRDER 2 REPAIR - F.A.

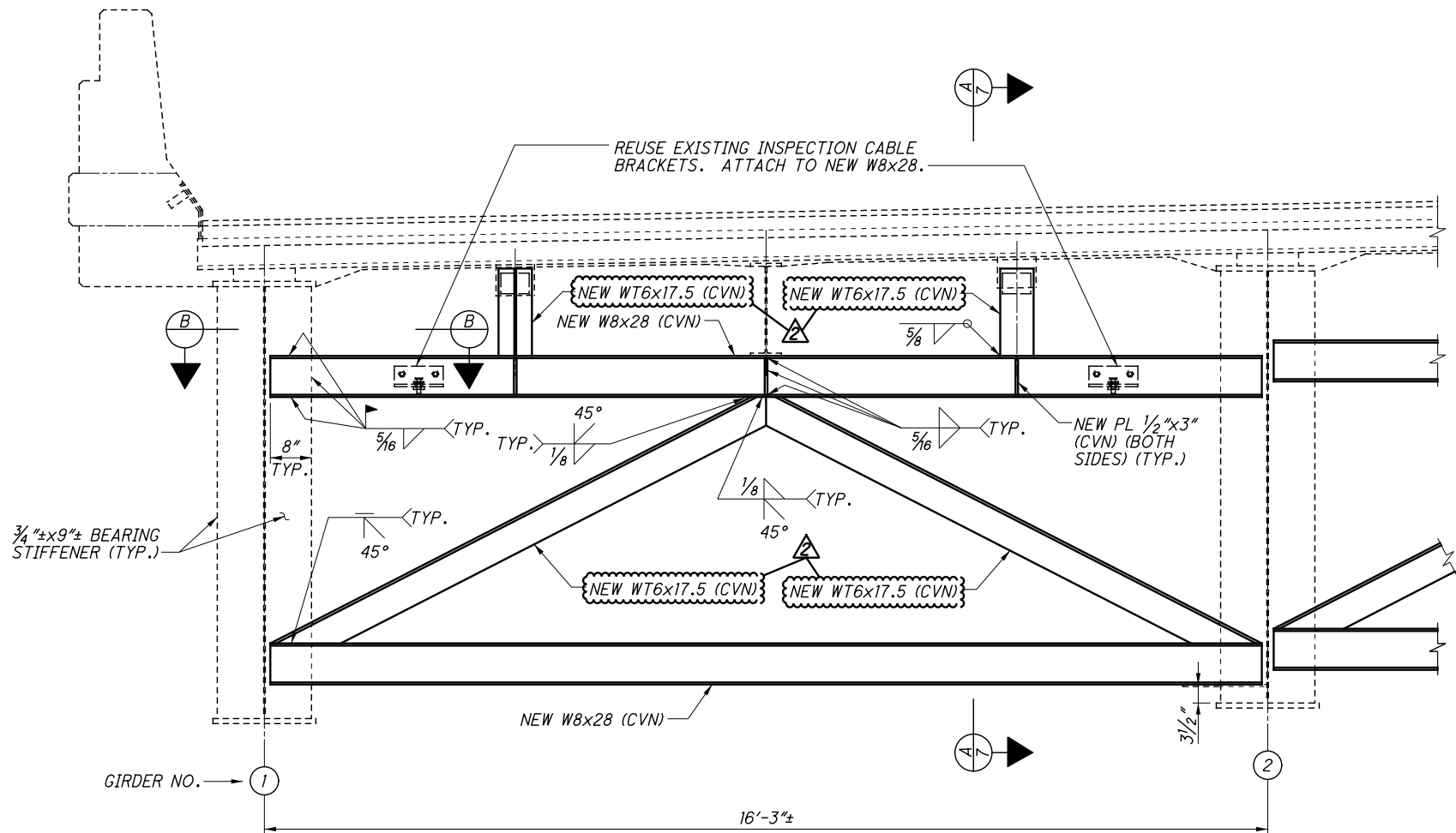


GIRDERS 3 & 4 REPAIR - F.A.

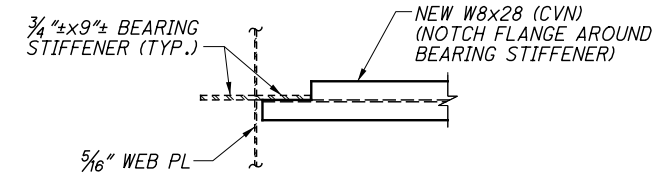
** WELD NEW PLATES TO EXISTING GIRDER FLANGES SIMILAR TO THE PROCEDURE SHOWN ON THE GIRDER 10 REPAIR.

02/08/21	ADD NOTE

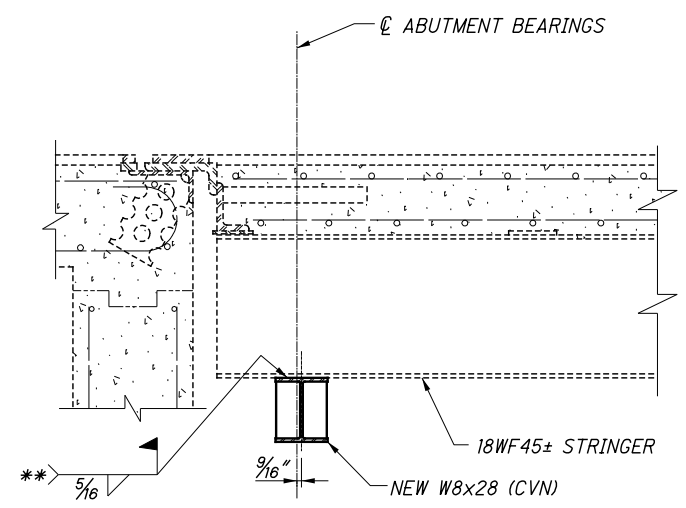
F:\2019\19034 VAR-Dist 12 Cuyahoga Co. Bridge Rehab Designs\ProjectData\109531\Design\Structures\CUY090_0758C\Sheets\090_0758SD005.dgn 2/8/2021 2:33:51 PM jsmith



FORWARD ABUTMENT END CROSSFRAME REPLACEMENT DETAIL
(BAY 1 SHOWN, BAYS 2, 3 & 6 SIMILAR)



SECTION B-B



STRINGER CONNECTION DETAIL

** IF THE EXISTING STINGERS THAT WILL BE REPLACED IN A FUTURE REHABILITATION PROJECT ARE BADLY DETERIORATED, WELDING IS NOT REQUIRED.

NOTES

- MATERIALS** SHOWN ARE EXISTING UNLESS OTHERWISE NOTED.
- CVN:** WHERE A SHAPE OR PLATE IS DESIGNATED (CVN), FURNISH MATERIAL THAT MEETS THE MINIMUM NOTCH TOUGHNESS REQUIREMENTS OF C&MS 711.01.
- END CROSSFRAME REPLACEMENT LOCATIONS:** SEE SHEET 5/10.
- WELDS:** THE CONTRACTOR MAY CHOOSE TO FIELD WELD AT LOCATIONS NOTED AS SHOP WELDS.

STEEL FABRICATION SHALL BE LEVEL UP PER 513.03.

△	02/08/21	REVISE MEMBER SIZE