

**UTILITIES**

LISTED BELOW ARE ALL UTILITIES LOCATED WITHIN THE PROJECT CONSTRUCTION LIMITS TOGETHER WITH THEIR RESPECTIVE OWNERS:

CITY OF LYNDBURST/SEWER:  
CITY OF LYNDBURST  
JEFFREY FILARSKI, CITY ENGINEER  
22999 FORBES RD, SUITE B  
CLEVELAND, OH 44146  
(440) 399-0810  
FILARSKI@CVELIMITED.COM

COMMUNICATION:  
ADESTA COMMUNICATIONS (G4S)  
DRAGAN KORDICH  
4 WALKER WAY, SUITE 1  
ALBANY, NY 12205  
(518) 869-5053  
DRAGAN.KORDICH@ADESTAGROUP.COM

AT&T  
JAMES JANIS  
13630 LORAIN AVE. - 2ND FLOOR  
CLEVELAND, OH 44111  
(216) 476-6142  
PJ8191@ATT.COM

AT&T LONG LINE  
MIKE DIEDERICH  
7555 E. PLEASANT VALLEY RD. SUITE 140  
INDEPENDENCE, OH 44131  
(216) 750-0135  
MD4145@ATT.COM

CENTURYLINK  
DOUG HOLLOWAY  
3801 ELM RD NE  
WARREN, OH 44483  
(216) 426-6010  
DOUG.HOLLOWAY@LUMEN.COM

SPECTRUM (CHARTER COMMUNICATIONS)  
PAT SANTOIEREMMO  
7 SEVERANCE CIRCLE  
CLEVELAND HEIGHTS, OHIO 44118  
(216) 575-8016  
PAT.SANTOIEREMMO@CHARTER.COM

VERIZON  
AL GUEST  
120 RAVINE ST.  
AKRON, OHIO 44303  
(330) 253-8267  
ALLAN.GUEST@VERIZON.COM

ZAYO  
SCOTT HEINLEN  
305 E. WIGGIN STREET  
GAMBIER, OHIO 43022  
(740) 501-6921  
SCOTT.HEINLEN@ZAYO.COM

WATER:  
CLEVELAND WATER  
FRED ROBERTS  
1201 LAKESIDE AVE.  
CLEVELAND, OHIO 44114  
(216) 664-2444  
FRED\_ROBERTS@CLEVELANDWATER.COM

**UTILITIES (CONT.)**

SEWER:  
NORTHEAST OHIO REGIONAL SEWER DISTRICT  
MARY MACIEJOWSKI  
3900 EUCLID AVE  
CLEVELAND, OHIO 44115-2504  
(216) 881-6600  
MACIEJOWSKIM@NEORS.D.ORG

GAS:  
DOMINION ENERGY  
KEVIN BIRT  
320 SPRINGSIDE DRIVE, SUITE 320  
AKRON, OH 44333  
(330) 664-2409  
KEVIN.J.BIRT@DOMINIONENERGY.COM

ELECTRIC:  
FIRST ENERGY  
JOHN M. ZASSICK  
6896 MILLER RD, SUITE 101  
BRECKSVILLE, OH 44141  
(440) 546-8706  
JMZASSICK@FIRSTENERGYCORP.COM

THE LOCATION OF THE UNDERGROUND UTILITIES SHOWN ON THE PLANS ARE AS OBTAINED FROM THE OWNERS AS REQUIRED BY SECTION 153.64 O.R.C.

**CONSTRUCTION NOISE**

ACTIVITIES AND LAND USE ADJACENT TO THIS PROJECT MAY BE AFFECTED BY CONSTRUCTION NOISE. IN ORDER TO MINIMIZE ANY ADVERSE CONSTRUCTION NOISE IMPACTS, DO NOT OPERATE POWER-OPERATED CONSTRUCTION-TYPE DEVICES BETWEEN THE HOURS OF 7:00 PM AND 7:00 AM. IN ADDITION, DO NOT OPERATE AT ANY TIME ANY DEVICE IN SUCH A MANNER THAT THE NOISE CREATED SUBSTANTIALLY EXCEEDS THE NOISE CUSTOMARILY AND NECESSARILY ATTENDANT TO THE REASONABLE AND EFFICIENT PERFORMANCE OF SUCH EQUIPMENT.

**WORK LIMITS**

THE WORK LIMITS SHOWN ON THESE PLANS ARE FOR PHYSICAL CONSTRUCTION ONLY. PROVIDE THE INSTALLATION AND OPERATION OF ALL WORK ZONE TRAFFIC CONTROL AND WORK ZONE TRAFFIC CONTROL DEVICES REQUIRED BY THESE PLANS WHETHER INSIDE OR OUTSIDE THESE WORK LIMITS.

**MANHOLES, CATCH BASINS AND VALVE BOXES**

ANY VALVE BOXES, CATCH BASIN, OR MANHOLES ENCOUNTERED THAT REQUIRE ADJUSTMENTS OR REPLACEMENT DUE TO THE PLANNING AND REPAVING OPERATIONS SHALL BE PERFORMED AS DIRECTED BY THE ENGINEER AND PAID FOR UNDER THEIR RESPECTIVE LINE ITEMS. BASED ON EXISTING FIELD CONDITONS, THE FOLLOWING QUANTITIES HAVE BEEN CARRIED TO THE GENERAL SUMMARY FOR THIS WORK TO BE USED "AS DIRECTED" BY THE ENGINEER:

- ITEM 611 INLET ADJUST TO GRADE 2 EACH
- ITEM 611 MANHOLE ADJUST TO GRADE 2 EACH
- ITEM 638 VALVE BOX ADJUSTED TO GRADE 3 EACH
- ITEM 638 SERVICE BOX ADJUSTED TO GRADE 3 EACH
- ITEM 611 GAS VALVE BOX ADJUSTED TO GRADE 4 EACH
- ITEM SPECIAL - MISCELLANEOUS METAL 600 LBS

**PRIVATE UTILITY STRUCTURE ADJUSTMENTS**

THE CONTRACTOR SHALL NOTIFY ANY AFFECTED PRIVATE UTILITIES TO ADJUST THEIR RESPECTIVE STRUCTURES TO GRADE FOLLOWING THE COMPLETION OF THE PAVING OPERATION.

**SURVEYING PARAMETERS**

PRIMARY PROJECT CONTROL MONUMENTS GOVERN ALL POSITIONING ON ODOT PROJECTS.

USE THE FOLLOWING PROJECT CONTROL, VERTICAL POSITIONING, AND HORIZONTAL POSITIONING PARAMETERS FOR ALL SURVEYING:

**PROJECT CONTROL**

POSITIONING METHOD: VRS/TOTAL STATION/  
DIFFERENTIAL LEVELING

MONUMENT TYPE: IRON REBAR, FIVE-EIGHTHS (5/8) INCH DIAMETER, TWELVE (12) INCHES LONG WITH A PLASTIC PLUG PLACED ON THE TOP BEARING THE INITIALS EMHT INC.

MAG NAIL WITH SHINER BEARING THE INITIALS EMHT INC.

**VERTICAL POSITIONING**

ORTHOMETRIC HEIGHT DATUM: NAVD88  
GEOID: GEOID18

**HORIZONTAL POSITIONING**

REFERENCE FRAME: NAD83 (2011)  
ELLIPSOID: GRS 80  
MAP PROJECTION: LAMBERT CONFORMAL CONIC  
COORDINATE SYSTEM: OHIO STATE PLANE, NORTH ZONE  
COMBINED SCALE FACTOR: 1.0000732232 (GRID TO GROUND)  
ORIGIN OF COORDINATE SYSTEM: 0, 0

USE THE POSITIONING METHODS AND MONUMENT TYPE USED IN THE ORIGINAL SURVEY TO RESTORE ALL MONUMENTS RELATED TO PRIMARY PROJECT CONTROL THAT ARE DAMAGED OR DESTROYED BY CONSTRUCTION ACTIVITIES. RESTORE THE DAMAGED OR DESTROYED MONUMENTS IN ACCORDANCE WITH CMS 623.

UNITS ARE IN U.S. SURVEY FEET.

**SEEDING AND MULCHING**

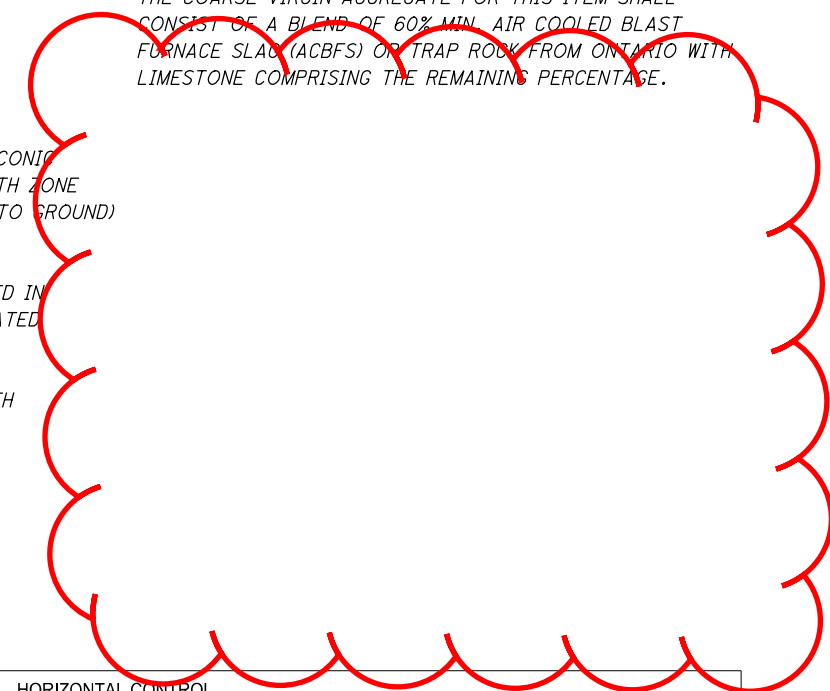
THE FOLLOWING QUANTITIES ARE PROVIDED TO PROMOTE GROWTH AND CARE OF PERMANENT SEEDED AREAS:

- ITEM 659 - SOIL ANALYSIS TEST 2 EACH
- ITEM 659 - TOPSOIL 58 CU YD
- ITEM 659 - SEEDING AND MULCHING 525 SQ YD
- ITEM 659 - REPAIR SEEDING AND MULCHING 26 SQ YD
- ITEM 659 - COMMERCIAL FERTILIZER 0.7 TON
- ITEM 659 - WATER 3 M GAL

SEEDING AND MULCHING SHALL BE APPLIED TO ALL AREAS OF EXPOSED SOIL BETWEEN THE RIGHT-OF-WAY LINES, AND WITHIN THE CONSTRUCTION LIMITS FOR AREAS OUTSIDE THE RIGHT-OF-WAY LINES COVERED BY WORK AGREEMENT. QUANTITY CALCULATIONS FOR SEEDING AND MULCHING ARE BASED ON THESE LIMITS.

**ITEM 441 - ASPHALT CONCRETE SURFACE COURSE, TYPE 1, (448), AS PER PLAN, PG64-22**

THE COARSE VIRGIN AGGREGATE FOR THIS ITEM SHALL CONSIST OF A BLEND OF 60% MIN. AIR COOLED BLAST FURNACE SLAG (ACBFS) OR TRAP ROCK FROM ONTARIO WITH LIMESTONE COMPRISING THE REMAINING PERCENTAGE.



HORIZONTAL CONTROL						
POINTS	STATION	OFFSET	NORTHING (GROUND)	EASTING (GROUND)	ELEVATION	DESCRIPTION
10	108+59.38	54.63' RT	676748.8000	2243285.2490	1014.74	1157 #10 IRSw/cap
11	108+38.70	70.52' LT	676744.4820	2243158.4620	1014.85	1157 #11 IRSw/cap
12	150+41.36	106.64' LT	676845.3030	2243178.8250	1013.93	1157 #12 IRSw/cap
13	150+45.92	8.97' RT	676851.4660	2243294.3610	1014.35	1157 #13 IRSw/cap
203	108+73.85	125.24' RT	676753.3240	2243357.1110	1017.09	1165 #203 MAGS
204	108+98.78	629.33' RT	676705.3270	2243859.4160	1020.23	1165 #204 MAGS
401	245+69.14	28.59' LT	676837	2243437	1016.30	1185 BM#1 BMS
402	151+97.52	21.62' RT	677003	2243305	1018.02	1185 BM#2 BMS
403	242+06.36	28.63' LT	676829	2243074	1015.42	1185 BM#3 BMS

VERTICAL CONTROL				
BENCHMARK	STATION	OFFSET	ELEVATION	DESCRIPTION
BM #1	245+69.14	28.59' LT	1016.30	CHISELED "X" ON THE SOUTH FLANGE BOLT OF A FIRE HYDRANT LOCATED ON THE NORTH SIDE OF MAYFIELD ROAD (U.S. 322), BEING THE FIRST FIRE HYDRANT EAST OF THE INTERSECTION WITH RICHMOND ROAD (S.R. 175).
BM #2	151+97.52	21.62' RT	1018.02	CHISELED "X" ON THE WEST FLANGE BOLT OF A FIRE HYDRANT LOCATED ON THE EAST SIDE OF RICHMOND ROAD (S.R. 175), BEING THE FIRST FIRE HYDRANT NORTH OF THE INTERSECTION WITH MAYFIELD ROAD (U.S. 322).
BM #3	242+06.36	28.63' LT	1015.42	CHISELED "X" ON THE SOUTH FLANGE BOLT OF A FIRE HYDRANT LOCATED ON THE NORTH SIDE OF MAYFIELD ROAD (U.S. 322), BEING THE FIRST FIRE HYDRANT WEST OF THE INTERSECTION WITH RICHMOND ROAD (S.R. 175).

J:\2019\320\00T\02\_CUY-175-8.59 Mayfield (PID 11006)\CUY-175-8.59 Mayfield\Design\Roadway\Sheets\11006\_GN001.dgn 4/8/2021 12:48:43 PM sbeal

CALCULATED  
GGW  
CHECKED  
SUB

GENERAL NOTES

CUY-175-8.59

**DOMINION ENERGY**

IT IS THE CONTRACTOR'S RESPONSIBILITY TO MAINTAIN THE LATERAL AND SUBJACENT SUPPORT OF DOMINION ENERGY'S PIPELINE(S), IN COMPLIANCE TO 29 CFR, PART 1926, SUBPART P, (SAFE EXCAVATION & SHORING). ONE-FOOT MINIMUM VERTICAL AND HORIZONTAL CLEARANCE MUST BE MAINTAINED BETWEEN DOMINION ENERGY OHIO'S (DEO) EXISTING PIPELINE(S) AND ALL OTHER IMPROVEMENTS. EXTREME CARE SHOULD BE TAKEN NOT TO HARM ANY DEO FACILITY (PIPELINES, ETC.) OR APPURTENANCE (PIPE COATING, TRACER WIRE, CATHODIC PROTECTION TEST STATION WIRES & DEVICES, VALVE BOXES, ETC.). DEO FACILITIES MUST BE PROTECTED WITH A TARP DURING BRIDGE CONSTRUCTION. THE CONTRACTOR WILL BE RESPONSIBLE AND LIABLE FOR ENSURING THAT ALL DEO EXISTING FACILITIES, ABOVE AND BELOW GROUND, REMAIN UNDAMAGED, ACCESSIBLE AND IN WORKING ORDER. THE CROSSING OF DEO'S PIPELINE WITH ANOTHER STEEL FACILITY MAY CREATE A POTENTIAL CORROSION ISSUE FOR THE PROPOSED FACILITY AND THE EXISTING DEO FACILITY. PLEASE CONTACT DOMINION ENERGY OHIO'S CORROSION DEPARTMENT: DAVE CUTLIP (330-266-2121), RICK McDONALD (330-266-2122), OR AL HUMRICHOUSER (330-478-3757).

DEO = DOMINION ENERGY OHIO, 1-800-362-7557.

**AT&T MANHOLE, DUCT, AND CONDUIT PROTECTION**

IF PAVING OCCURS ATT REQUIRES A MINIMUM OF 3 WEEKS NOTICE TO HAVE ANY MANHOLE CASTING ADJUSTED.

CONTRACTOR WILL USE CAUTION WHEN WORKING NEAR ATT CONDUITS. AWARDED CONTRACTOR WILL PROTECT AND SUPPORT ATT DUCTS IF EXPOSED.

**ITEM 608 - 8" CONCRETE WALK, AS PER PLAN**

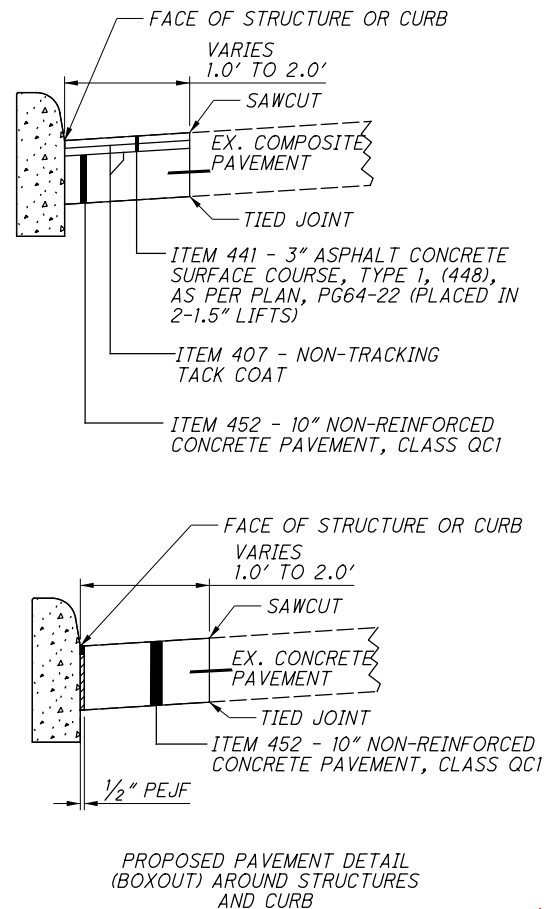
THIS ITEM INCLUDES ANY EXCAVATION OR EMBANKMENT, NECESSARY TO CONSTRUCT THE NEW WALK TO THE PROPOSED SECTION AND GRADE. THE COST FOR ALL ADDITIONAL LABOR AND MATERIALS SHALL BE INCLUDED IN THIS ITEM.

**PAVEMENT PLANING AND RESURFACING**

THE PAVEMENT PLANING AREAS SHOWN IN THE PLAN SHALL BE PAVED A MAXIMUM SEVEN DAYS AFTER THE PLANING HAS OCCURRED.

**ITEM 609 - CURB, TYPE 6, AS PER PLAN**

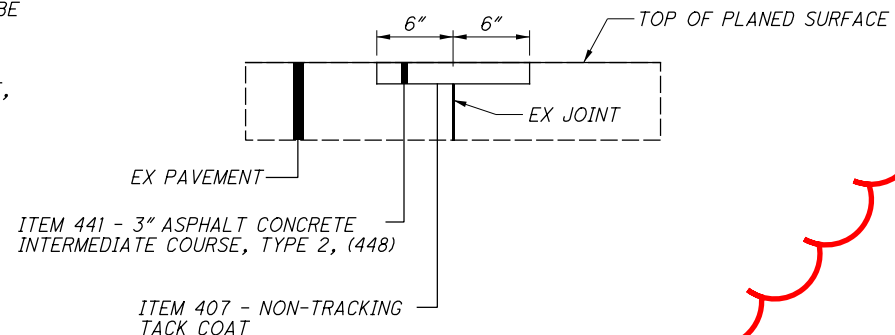
THIS ITEM SHALL INCLUDE THE SAWCUT AND PLACEMENT OF PROPOSED CURB AND PAVEMENT REPAIR REQUIRED TO CONSTRUCT THE PROPOSED CURB. PROPOSED CURB SHALL FOLLOW ODOT STANDARDS FOR ITEM 609, CURB, TYPE 6. IN ADDITION TO THE CURB THIS ITEM INCLUDES THE SAWCUT AND PAVEMENT REPAIR. AS SHOWN IN THE CURB DETAILS ON THE TYPICAL SECTION SHEET THE SAWCUT IS PROPOSED AT THE CURB FACE. IF THIS IS NOT POSSIBLE THE SAWCUT SHALL THEN BE PLACED BETWEEN 1 TO 2 FEET FROM THE FACE OF EXISTING CURB AS SHOWN IN DETAIL BELOW OR AS DIRECTED BY THE ENGINEER. THE PROPOSED CURB SHALL BE CONSTRUCTED BACK TO IT'S ORIGINAL LOCATION AND PAVEMENT REPLACED IN KIND. PAVEMENT BUILDUP IS TO BE APPROVED BY THE ENGINEER. INCLUDED WITH ITEM 609, CURB, TYPE 6, AS PER PLAN IS THE COST OF ALL MATERIALS, EQUIPMENT, AND LABOR REQUIRED TO SAWCUT, REMOVE AND REPLACE PAVEMENT AND INSTALL PROPOSED CURB.



**PAVEMENT REPAIR**

PARTIAL DEPTH PAVEMENT REPAIR MAY BE REQUIRED TO REPAIR ANY DAMAGED PAVEMENT, OR SPOT REPAIR POOR PAVEMENT AREAS AFTER THE PAVEMENT PLANING HAS BEEN PERFORMED. THE CONTRACTOR SHALL ESTIMATE DEPTH OF REPAIR TO BE 3" BELOW THE TOP OF THE EXISTING ASPHALT SURFACE WITH A WIDTH OF 12" CENTERED OVER THE EXISTING JOINT OR REPAIR AREA. REPAIR DEPTH MAY BE ADJUSTED AS DETERMINED IN THE FIELD BY THE ENGINEER. THE FOLLOWING QUANTITIES HAVE BEEN PROVIDED TO BE USED AS A CONTINGENCY FOR REPAIRS IF NEEDED AND AS DIRECTED BY THE ENGINEER. THE BELOW QUANTITY INCLUDES ALL LABOR, EQUIPMENT, MATERIALS INCLUDING MATERIALS SHOWN IN DETAIL BELOW, AND IS BASED ON APPROXIMATELY 10% OF THE RESURFACING AREA OF THIS PROJECT.

ITEM 251 - PARTIAL DEPTH PAVEMENT REPAIR 630 SQ YD



J:\2019\320\0D0T\02\_CUY-175-8.59 Mayfield (PID 111006)\CUY-175-8.59 Mayfield (PID 111006)\CUY-175\Design\Roadway\Sheet\111006\_GN001.dgn 4/8/2021 2:29:10 PM sbed

CALCULATED  
GGW  
CHECKED  
SUB

**GENERAL NOTES**

**CUY-175-8.59**

