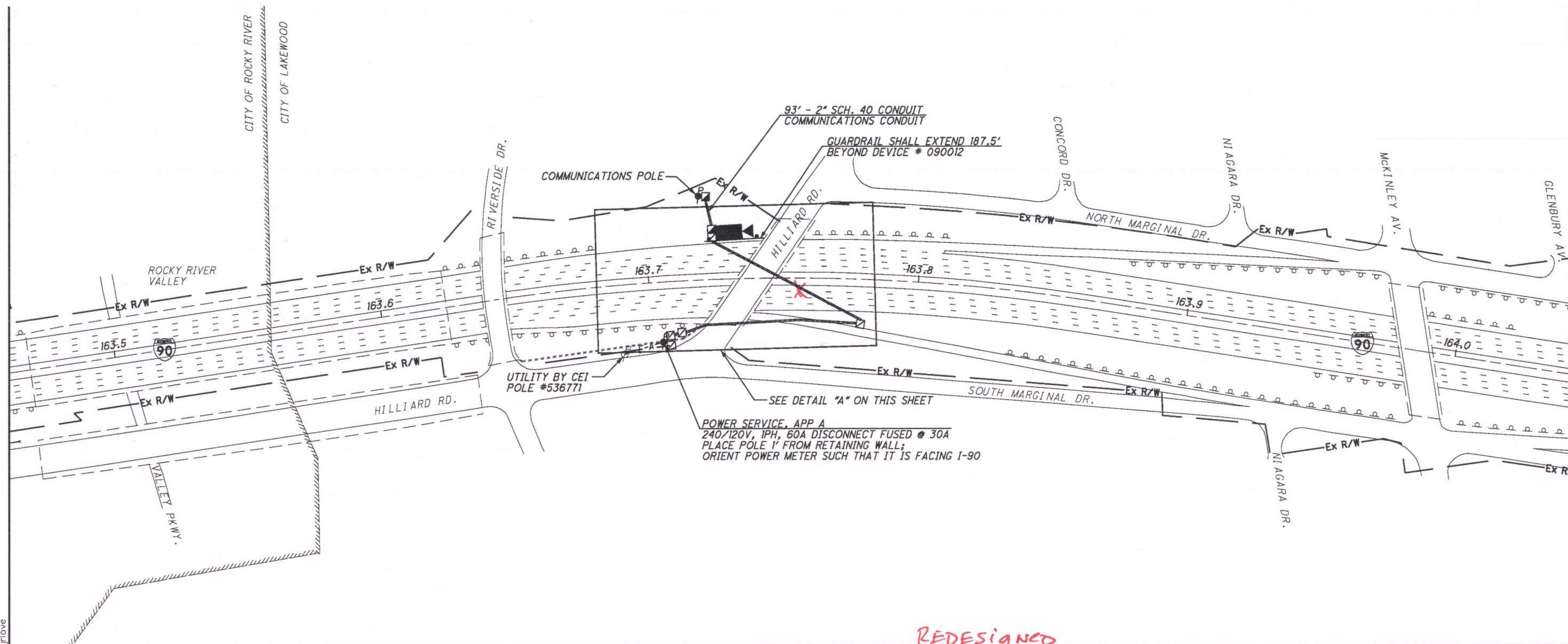
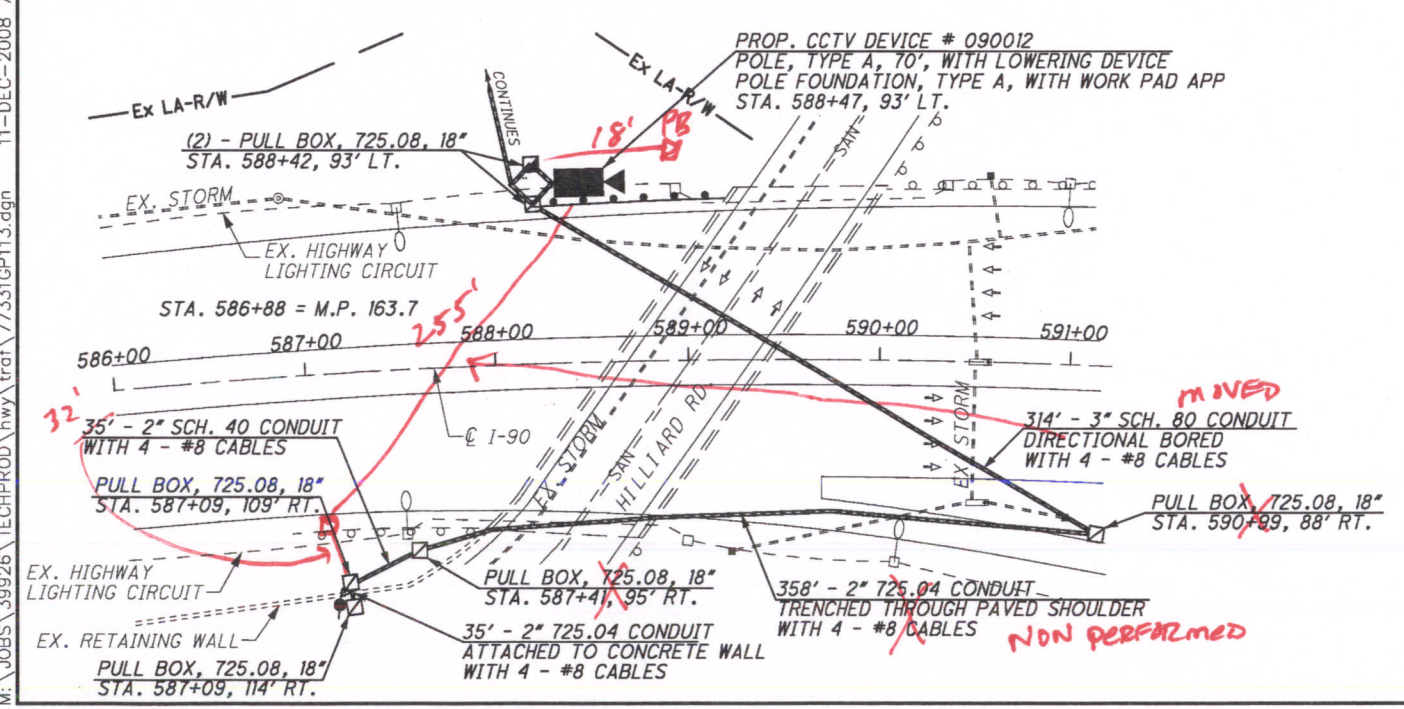


M:\JOBS\39926\TECHPROD\hwy\traf\77331GP113.dgn 11-DEC-2008 7:15AM jrlve



REDESIGNED

DETAIL "A" - NOT TO SCALE



- REFER TO SHEET 13 FOR CONDUIT TRANSITION TO SHOULDER DETAILS
- REFER TO SHEET 14 FOR CONDUIT AND CONDUIT ATTACHED TO WALL DETAILS
- REFER TO SHEET 15 FOR PULL BOX ORIENTATION AND COMMUNICATION POLE DETAILS
- REFER TO SHEET 16 FOR TYPICAL POWER SERVICE AS PER PLAN A DETAILS
- REFER TO SHEET 23 FOR TYPICAL CCTV CAMERA DETAILS
- REFER TO SHEET 46 FOR ELECTRICAL SLACK NOTES
- REFER TO SHEET 192 FOR COMMUNICATIONS PLANS
- REFER TO SHEET 200 FOR TYPICAL CCTV EOC COMMUNICATIONS DETAILS

CCTV 090012

0

50

100

200

HORIZONTAL SCALE IN FEET

CALCULATED

STS

CHECKED

JDG

VAR-CLEVELAND

FREEWAY MANAGEMENT

SYSTEM

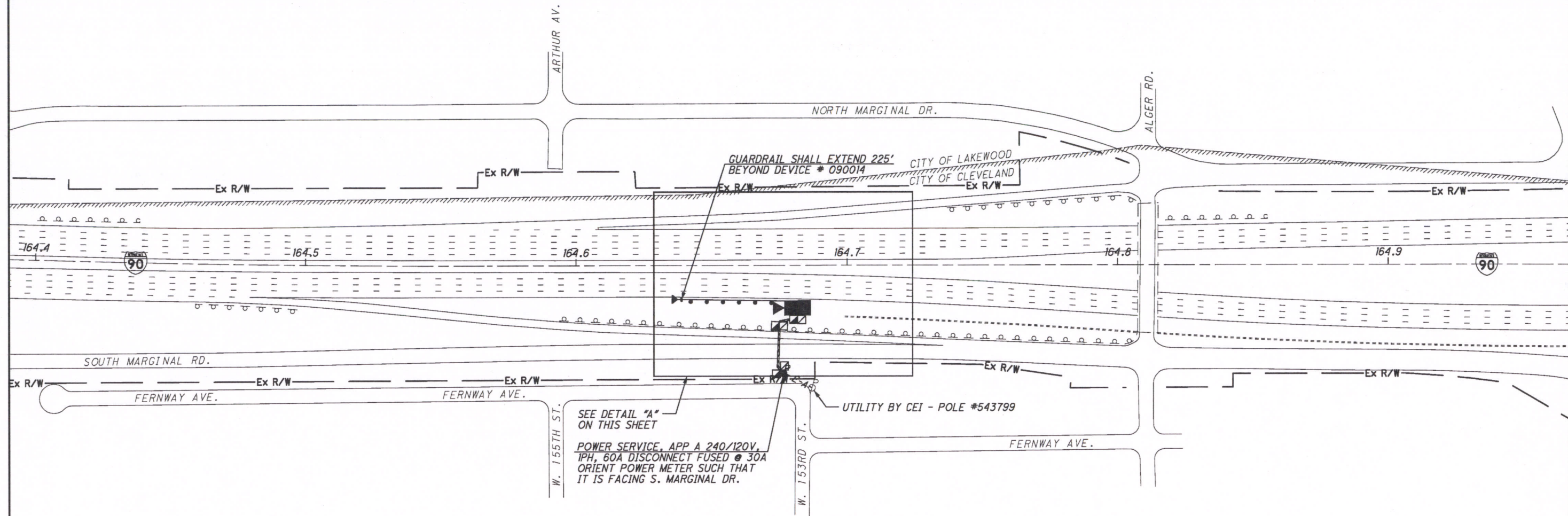
109

207

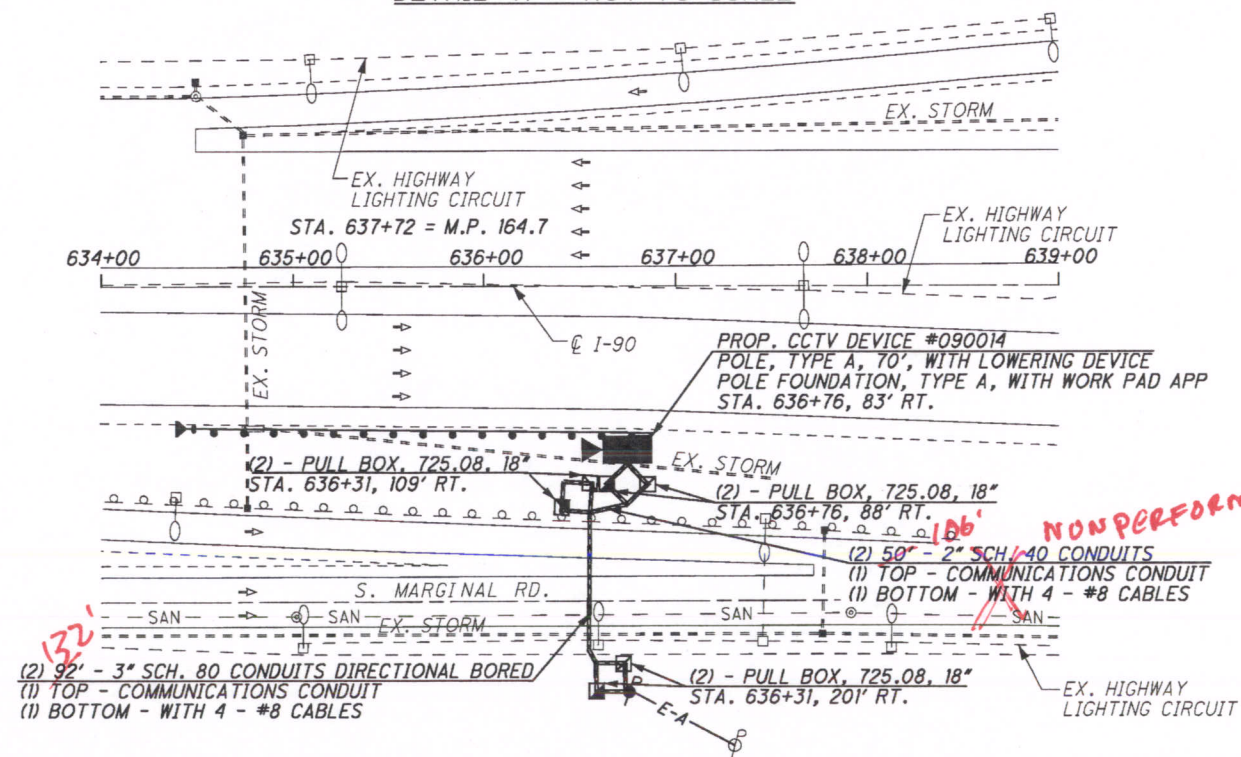
I-90 AT HILLIARD RD. (MP 163.46 TO MP 164.04)

CITY OF LAKEWOOD, CUYAHOGA COUNTY

M:\JOBS\39926\TECHPROD\hwy\traf\77331CP115.dgn 18-NOV-2008 1:25PM jrlve



DETAIL "A" - NOT TO SCALE



REFER TO SHEET 14 FOR CONDUIT DETAILS

REFER TO SHEET 15 FOR PULL BOX ORIENTATION AND COMMUNICATION POLE DETAILS

REFER TO SHEET 16 FOR TYPICAL POWER SERVICE AS PER PLAN A DETAILS

REFER TO SHEET 26 FOR TYPICAL CCTV CAMERA WITH SMART JACK DETAILS

REFER TO SHEET 46 FOR ELECTRICAL SLACK NOTES

REFER TO SHEET 192 FOR COMMUNICATIONS PLANS

REFER TO SHEET 198 FOR TYPICAL CCTV T-1 COMMUNICATIONS DETAILS

CCTV 090014



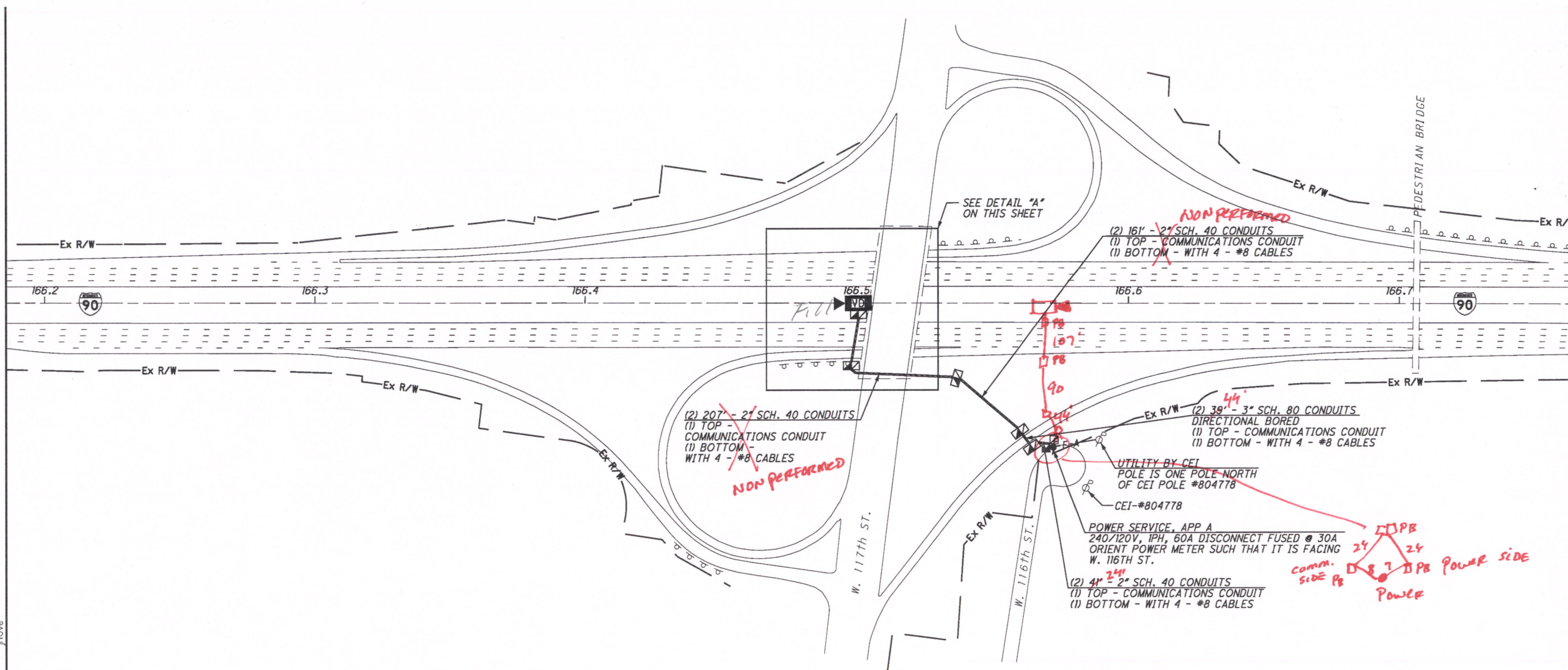
0 50 100 200
HORIZONTAL
SCALE IN FEET

CALCULATED
STS
CHECKED
JDG

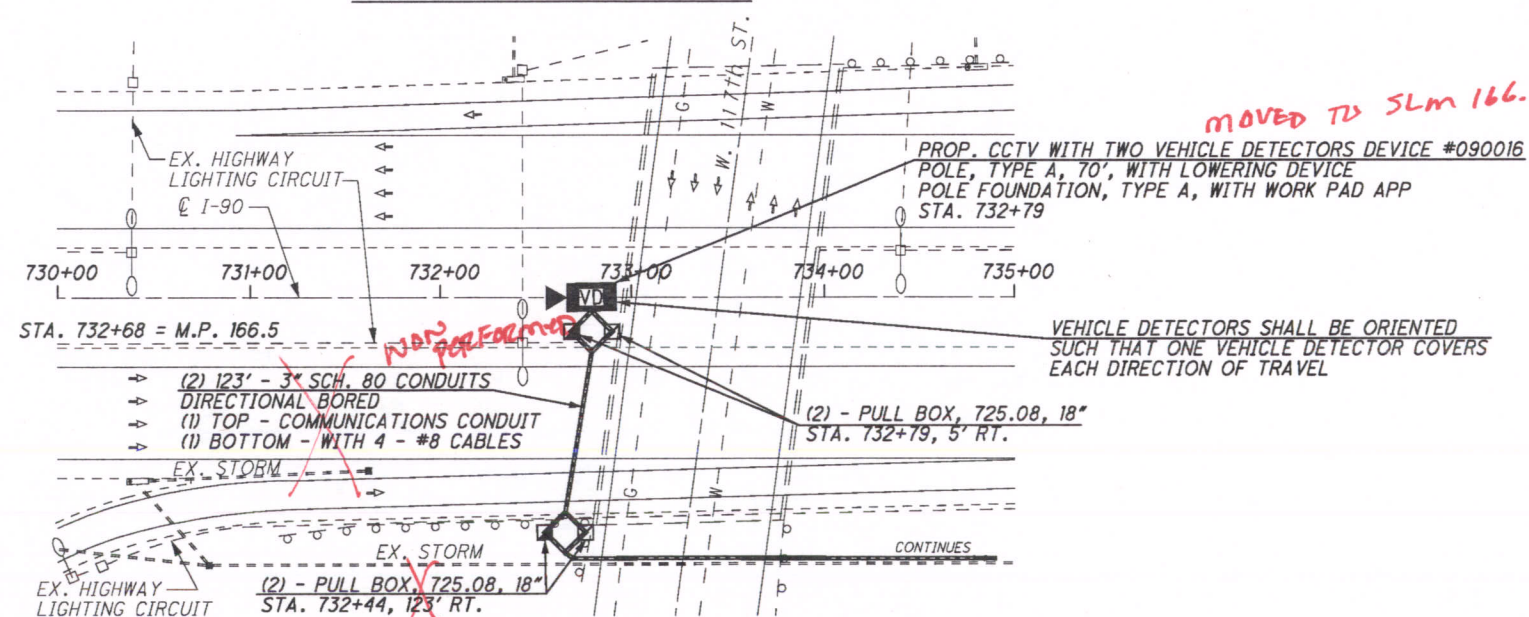
I-90 AT ALGER RD. (MP 164.39 TO MP 164.97)
CITY OF CLEVELAND, CUYAHOGA COUNTY

VAR-CLEVELAND
FREEWAY MANAGEMENT
SYSTEM

110
207



DETAIL "A" - NOT TO SCALE



REFER TO SHEET 14 FOR CONDUIT DETAILS

REFER TO SHEET 15 FOR PULL BOX ORIENTATION AND COMMUNICATION POLE DETAILS

REFER TO SHEET 16 FOR TYPICAL POWER SERVICE AS PER PLAN A DETAILS

REFER TO SHEET 25 FOR TYPICAL CCTV CAMERA WITH TWO VEHICLE DETECTORS DETAILS

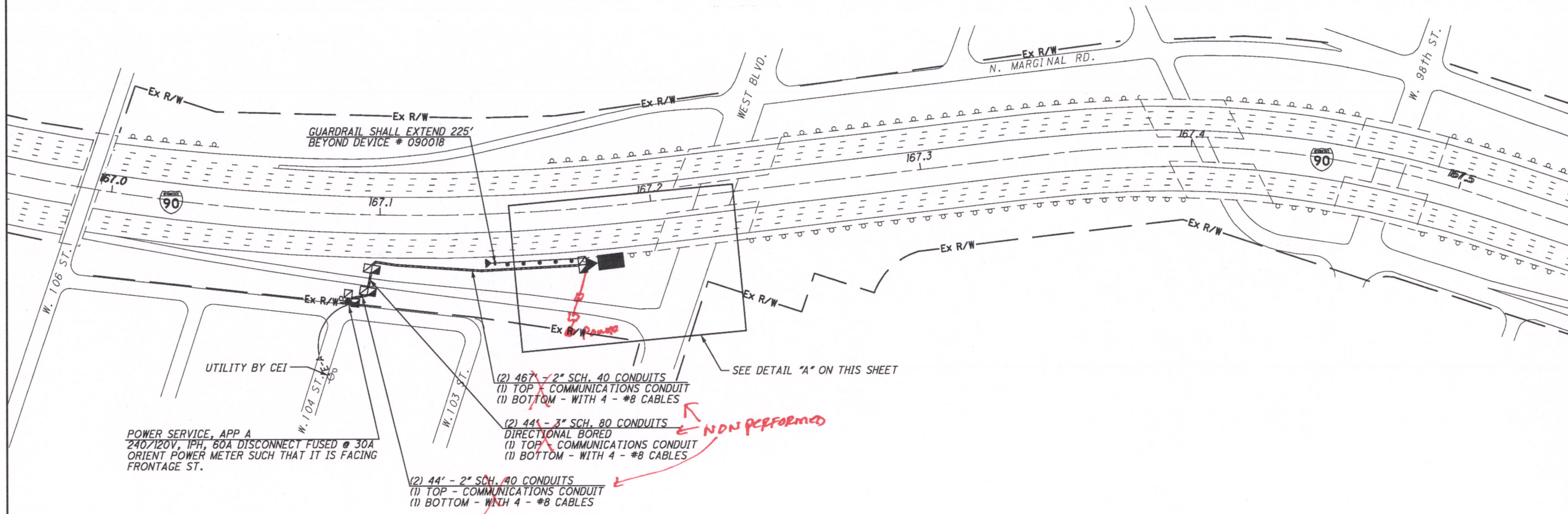
REFER TO SHEET 46 FOR ELECTRICAL SLACK NOTES

REFER TO SHEET 192 FOR COMMUNICATIONS PLANS

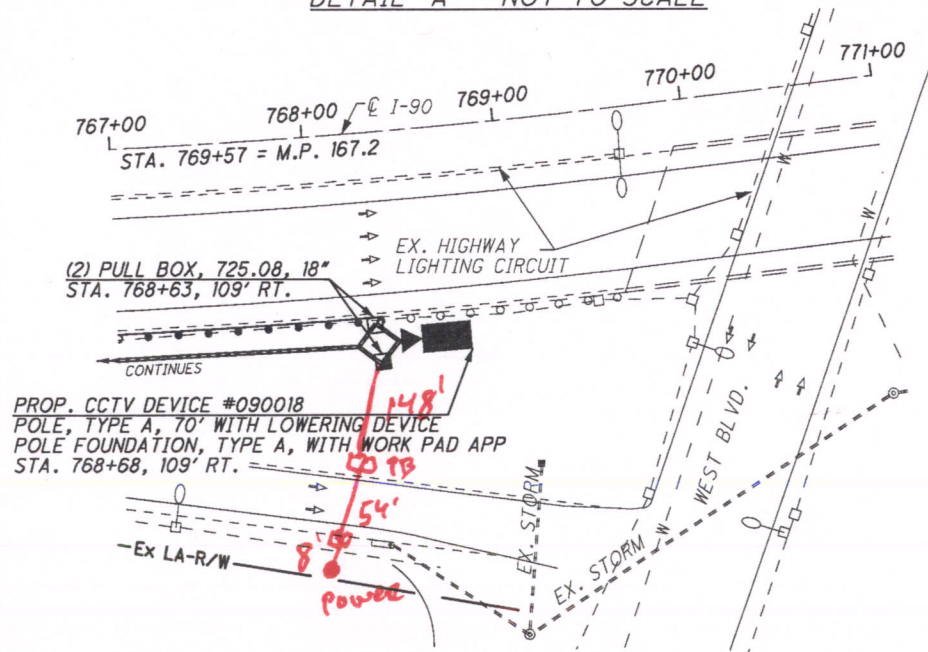
REFER TO SHEET 201 FOR TYPICAL CCTV W/VD EOC COMMUNICATIONS DETAILS

CCTV 090016

M:\JOBS\39926\TECHPROD\hwy\traf\773310P120.dgn 18-NOV-2008 1:26PM jrlve

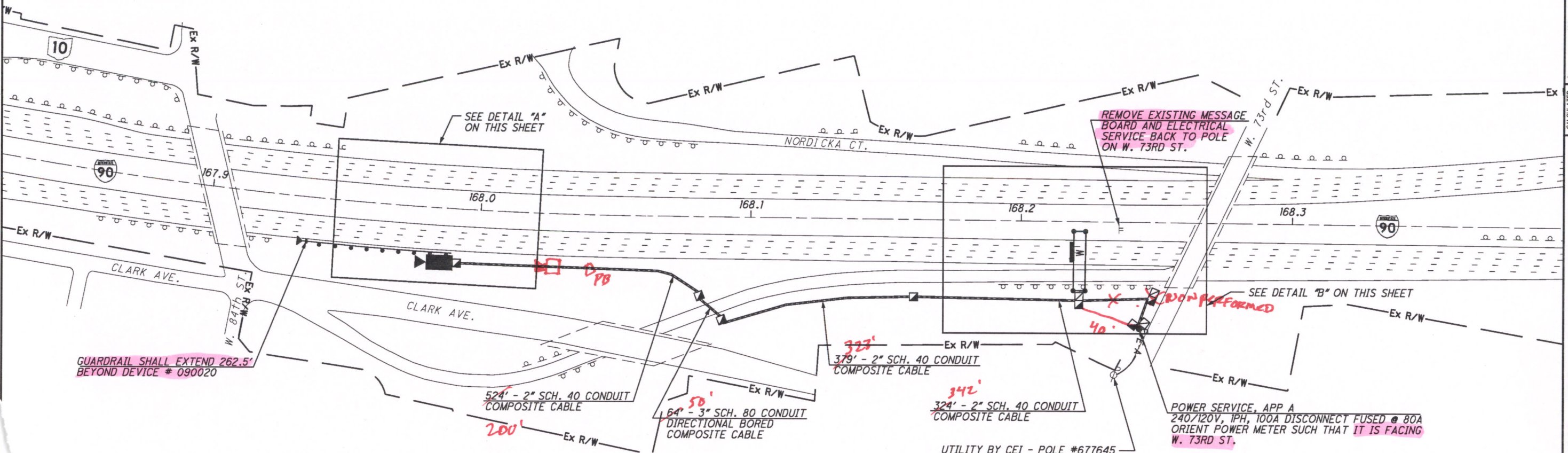


DETAIL "A" - NOT TO SCALE



REFER TO SHEET 14 FOR CONDUIT DETAILS
REFER TO SHEET 15 FOR PULL BOX ORIENTATION
AND COMMUNICATION POLE DETAILS
REFER TO SHEET 16 FOR TYPICAL POWER SERVICE
AS PER PLAN A DETAILS
REFER TO SHEET 23 FOR TYPICAL CCTV CAMERA DETAILS
REFER TO SHEET 46 FOR ELECTRICAL SLACK NOTES
REFER TO SHEET 192 FOR COMMUNICATIONS PLANS
REFER TO SHEET 200 FOR TYPICAL CCTV EOC
COMMUNICATIONS DETAILS

CCTV 090018



0 100 200
HORIZONTAL
SCALE IN FEET

CALCULATED

STS

CHECKED

JDG

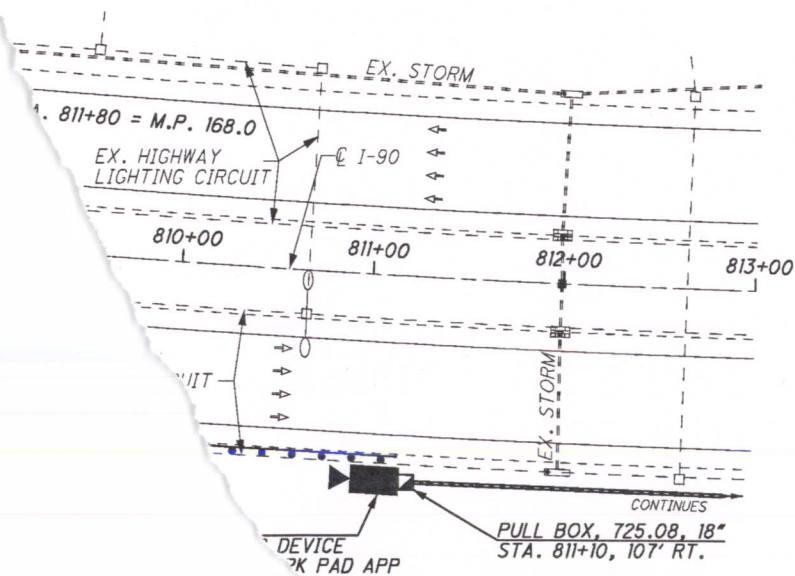
VAR-CLEVELAND
FREEWAY MANAGEMENT
SYSTEM

CITY OF CLEVELAND, CUYAHOGA COUNTY

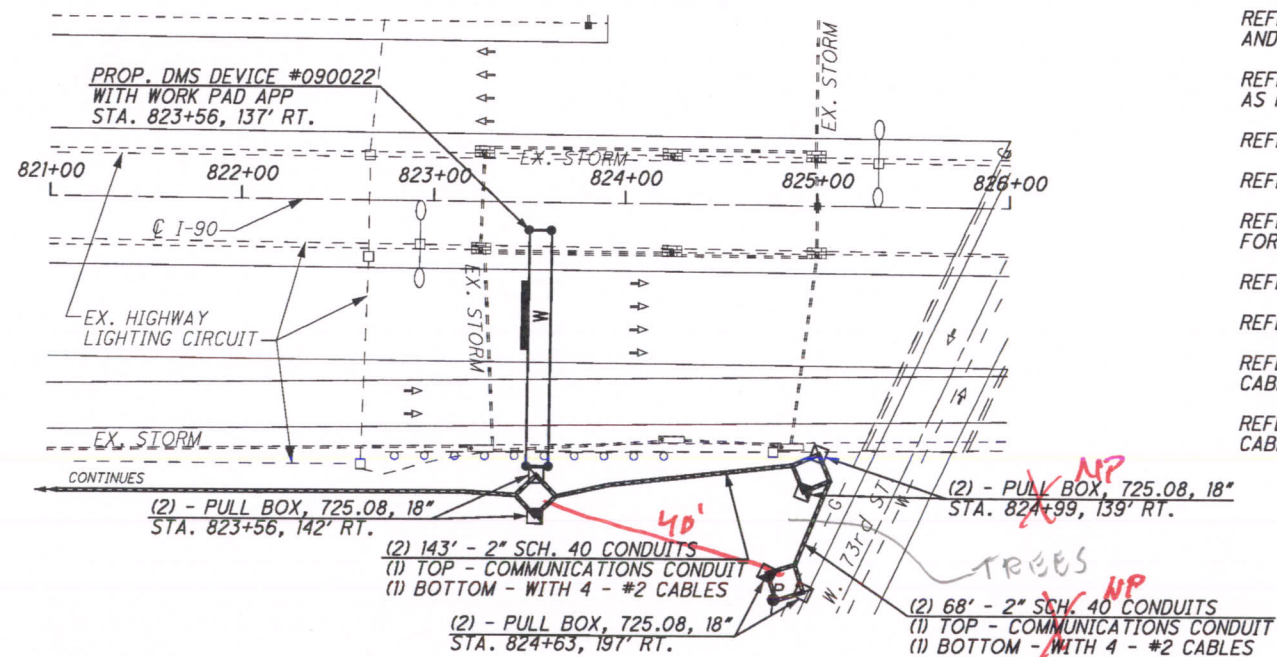
I-90 AT W.73RD ST. (MP 167.82 TO MP 168.40)

113
207

DETAIL "A" - NOT TO SCALE



DETAIL "B" - NOT TO SCALE

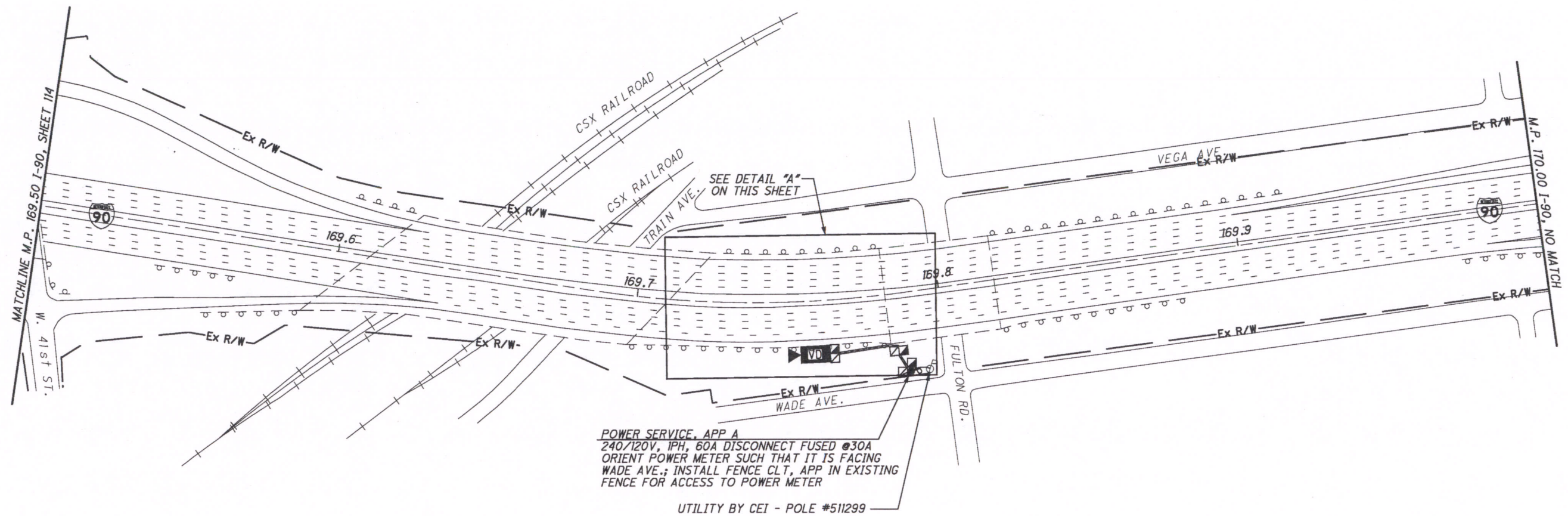


- REFER TO SHEET 14 FOR CONDUIT DETAILS
- REFER TO SHEETS 15-15A FOR PULL BOX ORIENTATION AND COMMUNICATION POLE DETAILS
- REFER TO SHEET 16 FOR TYPICAL POWER SERVICE AS PER PLAN A DETAILS
- REFER TO SHEET 23 FOR TYPICAL CCTV CAMERA DETAILS
- REFER TO SHEET 28 FOR TYPICAL DMS DETAILS
- REFER TO TRUSS ROW SIGN SUPPORT FOUNDATIONS FOR DETAILS
- REFER TO SHEET 46 FOR ELECTRICAL SLACK NOTES
- REFER TO SHEET 192 FOR COMMUNICATIONS PLANS
- REFER TO SHEET 205 FOR TYPICAL DMS W/ COMPOSITE CABLE EOC DETAILS
- REFER TO SHEET 207 FOR TYPICAL CCTV W/ COMPOSITE CABLE DETAILS

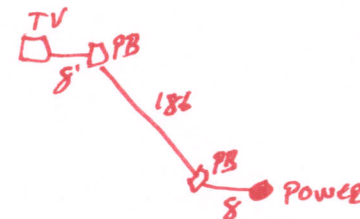
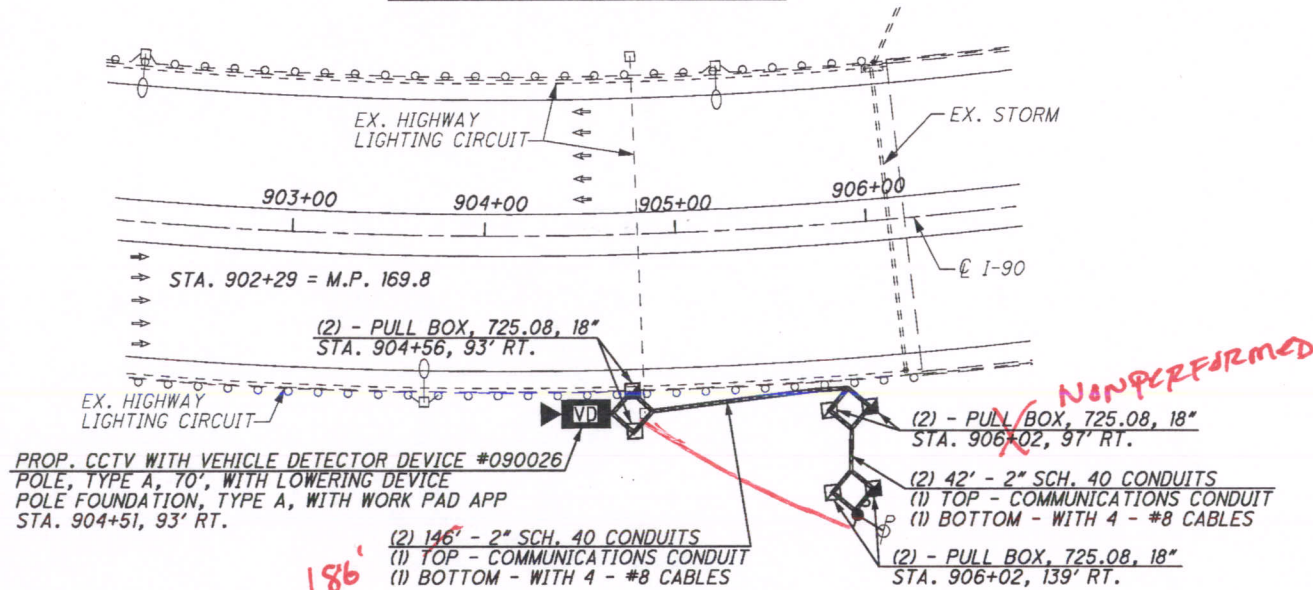
CCTV 090020
DMS 090022

REDESIGNED

M:\JOBS\39926\TECHPROD\hwy\traf\77331GP125.dgn 05-MAY-2009 1:29PM jrllove



DETAIL "A" - NOT TO SCALE



REFER TO SHEET 14 FOR CONDUIT DETAILS
REFER TO SHEET 15 FOR PULL BOX ORIENTATION AND COMMUNICATION POLE DETAILS
REFER TO SHEET 16 FOR TYPICAL POWER SERVICE AS PER PLAN A DETAILS
REFER TO SHEET 24 FOR TYPICAL CCTV CAMERA WITH VEHICLE DETECTOR DETAILS
REFER TO SHEET 46 FOR ELECTRICAL SLACK NOTES
REFER TO SHEET 193 FOR COMMUNICATIONS PLANS
REFER TO SHEET 201 FOR TYPICAL CCTV W/VD EOC COMMUNICATIONS DETAILS

CCTV 090026

