

ITEM 614 - MAINTAINING TRAFFIC, AS PER PLAN

IR 75 RAMP @ BLUELICK RD. (ALL-75-11.81C)

ONE-WAY TRAFFIC ON IR 75 RAMPS SHALL BE MAINTAINED AT ALL TIMES, EXCEPT FOR A PERIOD NOT TO EXCEED SEVEN (7) CONSECUTIVE CALENDAR DAYS THAT RAMP D TRAFFIC FROM IR 75 SB TO BLUELICK RD. MAY BE DETOURED AS SHOWN ON THIS SHEET AND TO COMPLETE THE REPAIR WORK ON BRIDGE NO. ALL-75-1181C. THE CLOSURE SHALL NOT OCCUR ON AND BETWEEN JULY 1ST & JULY 15TH THE CLOSURE LIMITS SHALL BE RESTRICTED TO THESE WORK LIMITS. A DISINCENTIVE SHALL BE ASSESSED IN THE AMOUNT OF \$5,000 PER DAY FOR EACH CALENDAR DAY THE RAMP REMAINS CLOSED TO TRAFFIC BEYOND THE SPECIFIED LIMITS. THE DETOUR SHALL BE ESTABLISHED, MAINTAINED & SUBSEQUENTLY REMOVED BY THE STATE OF OHIO.

NO ROAD CLOSURES, WORK OR EQUIPMENT WILL BE ALLOWED ON THE BLUELICK RD. RAMPS FOR THE PERIOD OF JULY 1ST THRU JULY 15TH.

THE FIRST DAY THAT THE DETOUR IS IN EFFECT SHALL BE CONSIDERED THE STARTING DATE OF THE 7 DAY DETOUR/ CLOSURE LIMITATION. THE 7TH DAY OF THE 7 DAY DETOUR/ CLOSURE LIMITATION SHALL BE CONSIDERED AS AN INTERIM COMPLETION DATE. ON OR BEFORE THE 7TH DAY, THE ROADWAY SHALL BE OPENED TO THE SAFE AND CONVENIENT USE OF THE TRAVELING PUBLIC. IF THE ROADWAY IS NOT OPENED BY THIS INTERIM COMPLETION DATE, DISINCENTIVES SHALL BE ASSESSED AS PER THE ABOVE SPECIFICATION.

US 30 RAMPS @ SR 696 (ALL-696-0.20)

US 30 RAMP TRAFFIC AT SR 696 SHALL BE MAINTAINED AT ALL TIMES, EXCEPT FOR A PERIOD NOT TO EXCEED FIFTY-SEVEN (57) CONSECUTIVE HOURS, THAT THROUGH TRAFFIC MAY BE DETOURED AS SHOWN ON SHEET 6. A DISINCENTIVE SHALL BE ASSESSED IN THE AMOUNT OF \$200 PER FIFTEEN (15) MINUTES FOR EACH FIFTEEN (15) MINUTE PERIOD A RAMP REMAINS CLOSED TO TRAFFIC BEYOND THE SPECIFIC LIMIT. THE DETOURS, AS SHOWN ON SHEET 6, SHALL BE ESTABLISHED, MAINTAINED AND SUBSEQUENTLY REMOVED BY THE STATE OF OHIO. RAMPS CAN BE CLOSED CONCURRENTLY AS LONG AS THE CLOSURES DO NOT INTERFERE WITH DETOUR ROUTES. THE EXIT RAMP CLOSURES AS PER STANDARD CONSTRUCTION DRAWING MT-98.29 AND THE BARRICADES AS PER STANDARD CONSTRUCTION DRAWING MT-101.60 FOR THE ENTRANCE RAMP CLOSURES, SHALL BE ESTABLISHED, MAINTAINED AND SUBSEQUENTLY REMOVED BY THE CONTRACTOR.

EACH FIFTY-SEVEN (57) HOURS OF US 30 RAMP CLOSURE SHALL OCCUR OVER A WEEKEND AND PRIOR TO JUNE 15. THE CLOSURE SHALL START ON FRIDAY AT 9 PM AND SHALL END ON MONDAY AT 6 AM.

THE FIRST HOUR THAT THE DETOUR IS IN EFFECT SHALL BE CONSIDERED THE STARTING DATE OF THE 57 HOUR DETOUR/CLOSURE LIMITATION. THE 57TH HOUR OF THE 57 HOUR DETOUR/CLOSURE LIMITATION SHALL BE CONSIDERED AS AN INTERIM COMPLETION DATE. ON OR BEFORE THE 57TH HOUR, THE RAMP SHALL BE OPENED TO THE SAFE AND CONVENIENT USE OF THE TRAVELING PUBLIC. IF THE RAMP IS NOT OPENED BY THIS INTERIM COMPLETION DATE, DISINCENTIVES SHALL BE ASSESSED AS PER THE ABOVE SPECIFICATIONS.

A MINIMUM OF 2 LANES OF TRAFFIC IN EACH DIRECTION SHALL BE MAINTAINED AT ALL TIMES. THE SHOULDERS MAY BE CLOSED ON U.S. 30 WHILE WORK IS OCCURRING PER MT-95.45. USE OF BARRELS IN LIEU OF PORTABLE CONCRETE BARRIER SHALL BE PERMITTED IF WARRANTED BY SCD MT-101.90. ONCE WORK HAS BEEN COMPLETED FOR THE DAY, THE ZONE MUST BE COMPLETELY REMOVED AND TRAFFIC RETURNED TO ITS NORMAL PATTERN. LENGTH AND DURATION OF SHOULDER CLOSURES SHALL BE AT THE APPROVAL OF THE ENGINEER. IT IS THE INTENT TO MINIMIZE

ITEM 614 - MAINTAINING TRAFFIC, AS PER PLAN (CONTINUED)

TO IMPACT TO THE TRAVELING PUBLIC. THE LEVEL OF UTILIZATION OF MAINTENANCE OF TRAFFIC DEVICES SHALL BE COMMENSURATE WITH THE WORK IN PROGRESS.

EQUIPMENT CANNOT BE STORED UNPROTECTED IN THE MEDIAN OR SHOULDER AREA AS PER 614.035. IT MUST BE MOVED TO A PROTECTED AREA, WHENEVER NOT IN USE.

ALL WORK AND TRAFFIC CONTROL DEVICES SHALL BE IN ACCORDANCE WITH C&MS 614 AND OTHER APPLICABLE PORTIONS OF THE SPECIFICATIONS, AS WELL AS THE OHIO MANUAL OF UNIFORM TRAFFIC CONTROL DEVICES. PAYMENT FOR ALL LABOR, EQUIPMENT AND MATERIALS SHALL BE INCLUDED IN THE LUMP SUM CONTRACT PRICE FOR ITEM 614, MAINTAINING TRAFFIC, UNLESS SEPARATELY ITEMIZED IN THE PLAN.

ON STATE ROUTES, A MINIMUM OF ONE, TEN FOOT LANE OF TRAFFIC IN EACH DIRECTION SHALL BE MAINTAINED AT ALL TIMES BY USE OF THE EXISTING PAVEMENT, THE COMPLETED PAVEMENT, ITEM 502 STRUCTURE FOR MAINTAINING TRAFFIC, ITEM 615 PAVEMENT FOR MAINTAINING TRAFFIC, ITEM 615 ROADS FOR MAINTAINING TRAFFIC, AND TEMPORARY SURFACES USING ITEMS 410 AND 614.

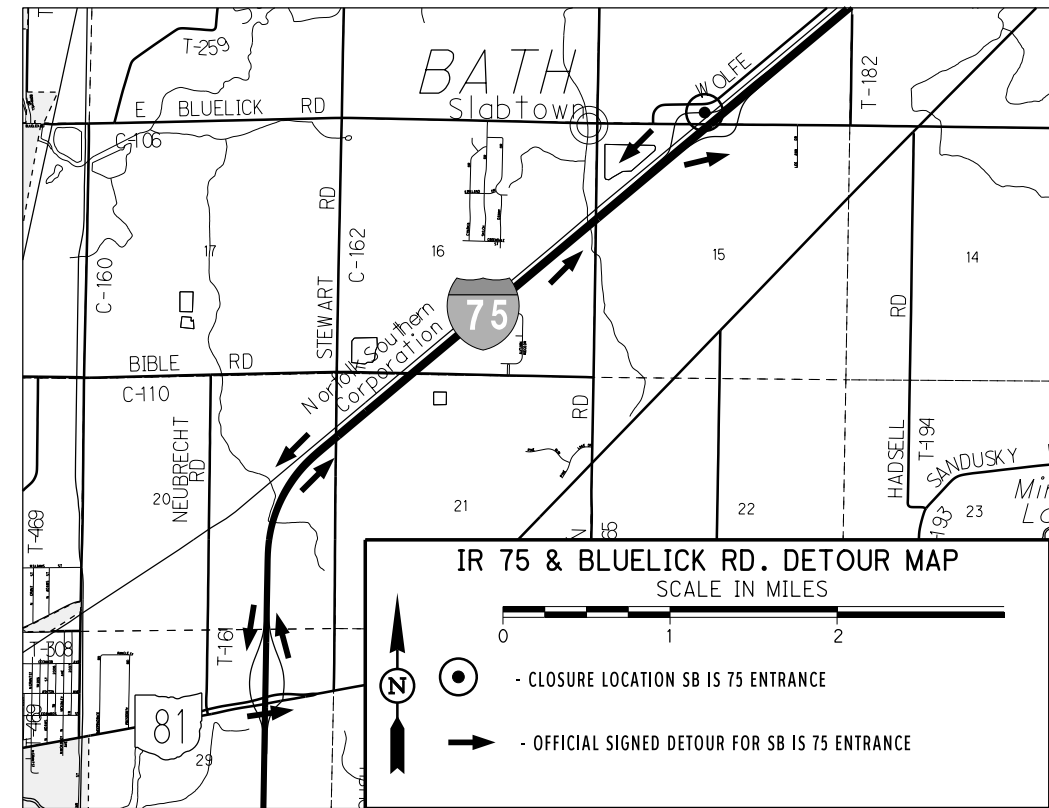
FOR WORK AT THE BRIDGES, A MINIMUM OF ONE AND HALF FEET LATERAL CLEARANCE IS REQUIRED FROM EDGE OF LANE TO BARRIERS AND CHANNELIZING DEVICES, AND AT THE HAN-15-2090 L&R BRIDGES, NO LANE SHIFTS OVER THE BRIDGES AND APPROACH SLABS ARE PERMITTED UNTIL THE REPAIRS TO THE ABUTMENTS (PATCHING AND CURTAIN WALL CONSTRUCTION) ARE COMPLETED.

LENGTH AND DURATION OF LANE CLOSURES AND RESTRICTIONS SHALL BE AT THE APPROVAL OF THE ENGINEER. IT IS THE INTENT TO MINIMIZE THE IMPACT TO THE TRAVELING PUBLIC. LANE CLOSURES AND RESTRICTIONS OVER SEGMENTS OF THE PROJECT IN WHICH NO WORK IS ANTICIPATED WITHIN A REASONABLE TIME FRAME, AS DETERMINED BY THE ENGINEER, SHALL NOT BE PERMITTED. THE LEVEL OF UTILIZATION OF MAINTENANCE OF TRAFFIC DEVICES SHALL BE COMMENSURATED WITH THE WORK IN PROGRESS.

ACCESS TO ADJACENT PROPERTY WITHIN THE WORK LIMITS SHALL BE MAINTAINED BY THE CONTRACTOR AT ALL TIMES, AS PER 614.02(a).

NOTICE OF CLOSURE SIGNS (W20-H13) SHALL BE ERECTED BY THE CONTRACTOR PRIOR TO THE SCHEDULED ROAD OR RAMP CLOSURE IN ACCORDANCE WITH THE NOTICE OF CLOSURE TIME TABLE BELOW. [AT THE APPROVAL OF THE ENGINEER, PORTABLE CHANGEABLE MESSAGE SIGNS MAY BE USED IN LIEU OF THE STANDARD FLATSHEET SIGN FOR CLOSURE DURATIONS OF LESS THAN 1 WEEK.]

THE SIGNS SHALL BE ERECTED ON THE RIGHT-HAND SIDE OF THE ROAD/RAMP FACING TRAFFIC. THEY SHALL BE PLACED SO AS NOT TO INTERFERE WITH THE VISIBILITY OF ANY OTHER TRAFFIC CONTROL SIGNS. ON ROADWAYS, THEY SHOULD BE ERECTED AT OR NEAR THE POINT OF CLOSURE. THE SIGNS MAY BE ERECTED ANYWHERE ON RAMPS AS LONG AS THEY ARE VISIBLE TO THE MOTORISTS USING THE RAMP. ON ENTRANCE RAMPS, THE SIGN SHALL BE ERECTED WELL IN ADVANCE OF THE MERGE AREA TO AVOID DISTRACTING MOTORISTS.



ITEM 614 - MAINTAINING TRAFFIC, AS PER PLAN (CONTINUED)



NOTICE OF CLOSURE SIGN TIME TABLE

ITEM	DURATION OF CLOSURE	SIGN DISPLAYED TO PUBLIC
	>= 2 WEEKS	14 CALENDAR DAYS PRIOR TO CLOSURE
RAMP & ROAD CLOSURE	>= 12 HOURS & < 2 WEEKS	7 CALENDAR DAYS PRIOR TO CLOSURE
	< 12 HOURS	2 BUSINESS DAYS PRIOR TO CLOSURE

THE SIGN SHALL DISPLAY THE DATE OF THE CLOSURE IN MMM-DD FORMAT AND THE NUMBER OF DAYS OF THE CLOSURE. THE LAST LINE OF THE W20-H13 SIGN LISTS A PHONE NUMBER WHICH A MOTORIST MAY CALL FOR ADDITIONAL INFORMATION.

UPON COORDINATION WITH THE STATE OF OHIO, DETOURS SHALL BE ESTABLISHED, MAINTAINED, AND SUBSEQUENTLY REMOVED BY THE STATE.

ALL WORK AND TRAFFIC CONTROL DEVICES SHALL BE IN ACCORDANCE WITH C&MS 614 AND OTHER APPLICABLE PORTIONS OF THE SPECIFICATIONS, AS WELL AS THE OHIO MANUAL OF UNIFORM TRAFFIC CONTROL DEVICES. PAYMENT FOR ALL LABOR, EQUIPMENT AND MATERIALS SHALL BE INCLUDED IN THE LUMP SUM CONTRACT PRICE FOR ITEM 614, MAINTAINING TRAFFIC, AS PER PLAN, UNLESS SEPARATELY ITEMIZED IN THE PLAN.

I:\Projectdata\101196\Design\Roadway\Sheets\101196_MOT_IR_75_1181C_Ramp_Detour.dgn Sheet 08-MAR-2021 10:42AM eschecke

CALCULATED
XXX
CHECKED
XXX

MAINTENANCE OF TRAFFIC

D01-BM-FY21

I:\Projectdata\101196\Design\Structures_General\Sheets\101196_GS002_Addendum R2.dgn Default 07-MAR-2021 11:49PM eschecke

STRUCTURE REPAIR (SFN 6900062) (PUT-115-01.32 OVER SUGAR CREEK)				
ITEM	EXT.	DESCRIPTION	UNIT	TOTAL
516	01301	ELASTOMERIC STRIP SEAL WITHOUT STEEL EXTRUSIONS, AS PER PLAN (SEE SHT, 7)	FT	70
STRUCTURE REPAIR (SFN 0200506) (ALL-696-0020 OVER WB US 30 & RAMP D)				
ITEM	EXT.	DESCRIPTION	UNIT	TOTAL
512	10100	SEALING OF CONCRETE STRUCTURE (EXPOXY-EURETHANE)	SY	31
519	11101	PATCHING CONCRETE STRUCTURE, AS PER PLAN (SEE SHT. 7)	SF	200
SPECIAL	51912510	PATCHING CONCRETE BRIDGE DECK (SEE THIS SHEET)	SY	27
842	10000	CORRECTING ELEVATION OF CONCRETE APPROACH SLABS W/ HIGH DENSITY POLYURETHANE	LB	70
843	50000	PATCHING CONCRETE STRUCTURES WITH TROWELABLE MORTAR	SF	75
STRUCTURE REPAIR (SFN 8801630) (WYA-30-1821 OVER INTERMITTENT WATERWAY)				
ITEM	EXT.	DESCRIPTION	UNIT	TOTAL
PIPE LINER OPTION A: SS 837 LINER PIPE (SEE PN 138)				
503	11100	COFFERDAMS AND EXCAVATION BRACING	LS	
837	10000	LINER PIPE, 54" OD (707.34) (SEE DETAIL AND NOTE BELOW)	FT	472
837	21000	BACKFILL FOR LINER PIPE	FT	472
PIPE LINER OPTION B: SS 833 CONDUIT RENEWAL USING SPRAY APPLIED STRUCTURAL LINER (SEE PN 138)				
833	10000	CONDUIT RENEWAL USING SPRAY APPLIED STRUCTURAL LINER, ROUND CONDUIT (60" DIAMETER)	FT	472
PIPE LINER OPTION C: SS 899 CURED-IN-PLACE PIPE LINER (SEE PN 138)				
899	10000	CURED-IN-PLACE PIPE LINER (60" DIAMETER)	FT	472

WORK TO BE PERFORMED

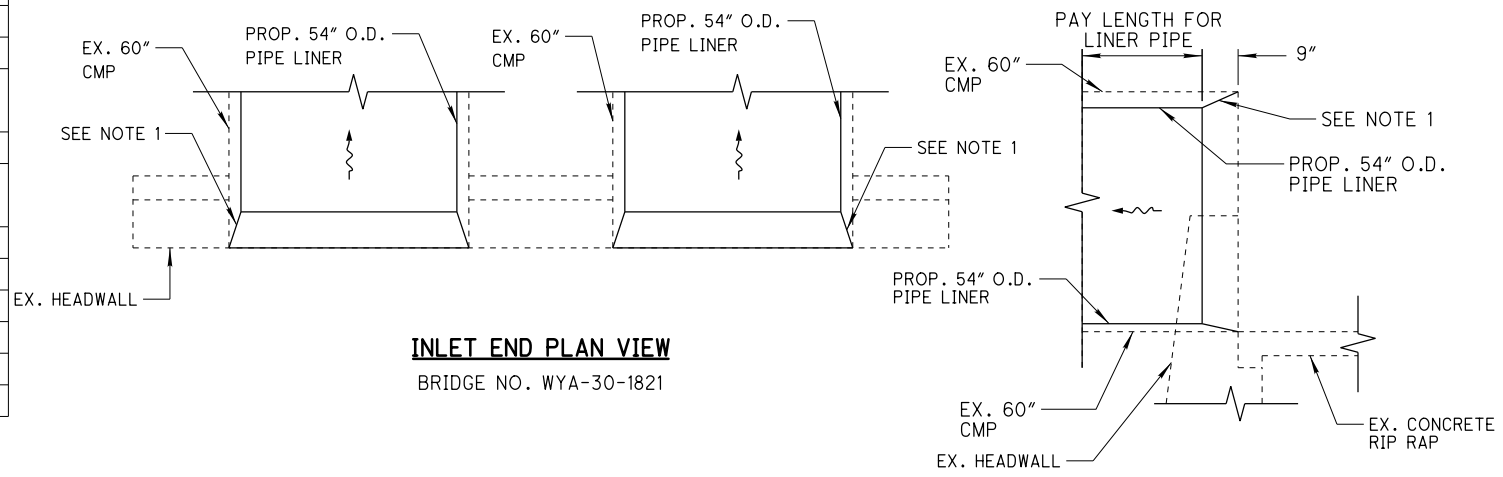
County	Route	SLM	Feature Intersected	SFN	Description of Work
Replace Approach Slabs					
HAN	SR 15	2090L	LYE CREEK	3200574	Replace Approach Slabs, patch deck & abutment/wingwalls, install curtain walls, and treat deck with GFR
HAN	SR 15	2090R	LYE CREEK	3200604	Replace Approach Slabs, patch deck & abutment/wingwalls, install curtain walls, and treat deck with GFR
Joint Replacement					
ALL	IR 75	1181C	RAMP C OVER NS RR	0202401	Replace damaged intermediate joint
ALL	SR 696	00200	US 30 WB & RAMP D	0200506	Replace pressure relied joint, repair median sections, lift parapet end sections & patch deck
PUT	SR 115	0132	SUGAR CREEK	6900062	Strip Seal Gland Replacement
Pipe Lining					
WYA	US 30	1821	INTERMITTENT WATERWAY	8801630	Line Twin 60" Alum.

ITEM SPECIAL, PATCHING CONCRETE BRIDGE DECK

THIS ITEM SHALL BE COMPLETED PER THE SPECIFICATIONS IN PROPOSAL NOTE 512. THE CONTRACTOR HAS THE OPTION TO USE PATCHING MATERIAL TYPE A, B OR C TO COMPLETE THE REPAIRS WITHIN THE TIME FRAMES PERMITTED IN THE PLANS.

THIS ITEM SHALL BE USED TO COMPLETE REPAIRS TO CONCRETE ON BRIDGE DECKS AND APPROACH SLABS AS PER THE "WORK TO BE PERFORMED" LIST ON THIS SHEET AND TO ADDRESS ANY POT HOLES OR CONCRETE SCALING THAT EXISTS.

STRUCTURE REPAIR (SFN 3200574) (HAN-15-2090 L OVER LYE CREEK)				
ITEM	EXT.	DESCRIPTION	UNIT	TOTAL
202	22900	APPROACH SLAB REMOVED	SY	134
509	10000	EPOXY COATED REINFORCING STEEL	LB	1182
510	10000	DOWEL HOLES WITH NONSHRINK, NONMETALLIC GROUT	EACH	158
512	10600	CONCRETE REPAIR BY EPOXY INJECTION	FT	10
512	73500	TREATING CONCRETE BRIDGE DECKS WITH GRAVITY-FED RESIN	SY	442
519	11101	PATCHING CONCRETE STRUCTURE, AS PER PLAN (SEE SHT. 7)	SF	175
SPECIAL	51911900	PATCHING CONCRETE STRUCTURES, MISC.: ABUTMENT BACKWALL (SEE SHT. 7)	CY	6
SPECIAL	51912510	PATCHING CONCRETE BRIDGE DECK (SEE THIS SHEET)	SY	40
526	25001	REINFORCED CONCRETE APPROACH SLABS (T=15"), AS PER PLAN (SEE SHT. 7)	SY	134
843	50000	PATCHING CONCRETE STRUCTURES WITH TROWELABLE MORTAR	SF	50
STRUCTURE REPAIR (SFN 3200604) (HAN-15-2090 R OVER LYE CREEK)				
ITEM	EXT.	DESCRIPTION	UNIT	TOTAL
202	22900	APPROACH SLAB REMOVED	SY	134
509	10000	EPOXY COATED REINFORCING STEEL	LB	1182
510	10000	DOWEL HOLES WITH NONSHRINK, NONMETALLIC GROUT	EACH	158
512	10600	CONCRETE REPAIR BY EPOXY INJECTION	FT	15
512	73500	TREATING CONCRETE BRIDGE DECKS WITH GRAVITY-FED RESIN	SY	442
519	11101	PATCHING CONCRETE STRUCTURE, AS PER PLAN (SEE SHT. 7)	SF	320
SPECIAL	51911900	PATCHING CONCRETE STRUCTURES, MISC.: ABUTMENT BACKWALL (SEE SHT. 7)	CY	6
SPECIAL	51912510	PATCHING CONCRETE BRIDGE DECK (SEE THIS SHEET)	SY	50
526	25001	REINFORCED CONCRETE APPROACH SLABS (T=15"), AS PER PLAN (SEE SHT. 7)	SY	134
843	50000	PATCHING CONCRETE STRUCTURES WITH TROWELABLE MORTAR	SF	160
STRUCTURE REPAIR (SFN 0202401) (ALL-75-1181C OVER NORFOLK AND SOUTHERN RR)				
ITEM	EXT.	DESCRIPTION	UNIT	TOTAL
202	11203	PORTIONS OF STRUCTURE REMOVED, OVER 20 FT SPAN, AS PER PLAN (SEE SHT. 7)	LS	
511	34410	CLASS QC2 CONCRETE, SUPERSTRUCTURE	CY	1
512	10100	SEALING OF CONCRETE SURFACES (EPOXY-URETHANE)	SY	1
516	12301	STRIP SEAL EXPANSION JOINT ANCHORED WITH ELASTOMERIC CONCRETE, AS PER PLAN (SEE SHTS 12-13)	FT	28



NOTE:

1. THE LINER PIPES ARE TO BE PLACED 9" SHORTER THAN THE EXISTING PIPES ON THE INLET ENDS. BACKFILL FOR THE LINER PIPES TO BE SLOPED TO TRANSITION FROM THE INLET ENDS OF THE LINER PIPES TO THE INLET ENDS OF THE EXISTING CORRUGATED METAL PIPES.

DESIGN AGENCY: ODOT DISTRICT ONE
 DATE: VARIOUS
 REVIEWED: VARIOUS
 DRAWN: EJS
 DESIGNED: EJS
 CHECKED: VARIOUS
 STRUCTURE GENERAL NOTES & ESTIMATED QUANTITIES
 D01-BM-FY21
 PID No. 101196
 2 / 7
 8
 13