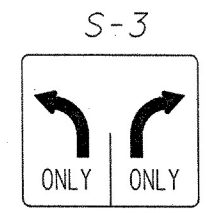
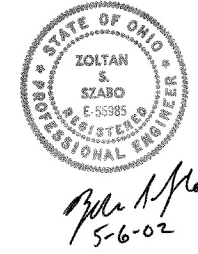
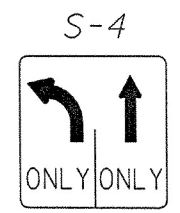


J:\JOBS\35404\Techpr od\plans\35404cp001.dgn 06-MAY-2002 3:24 PM MGeising

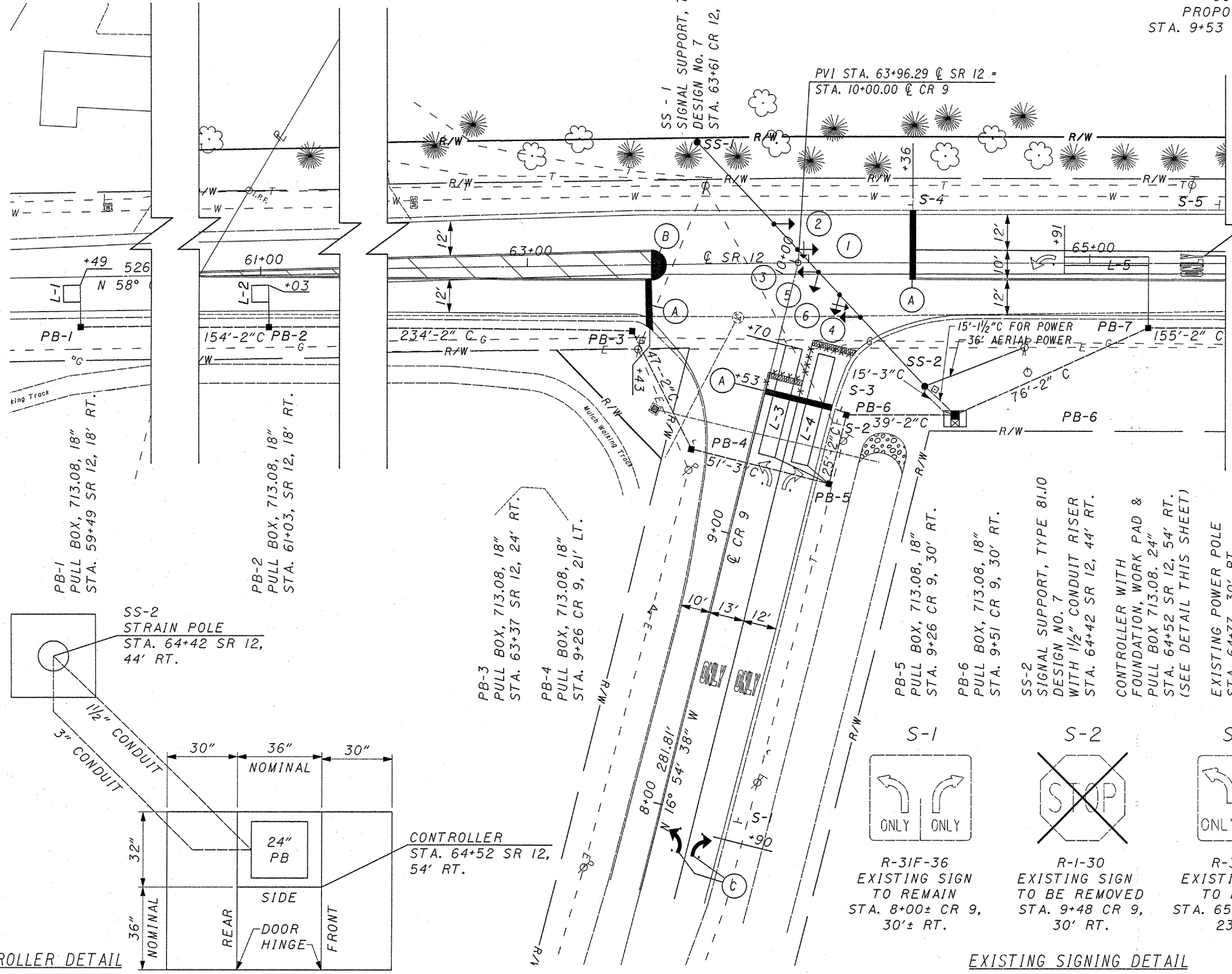
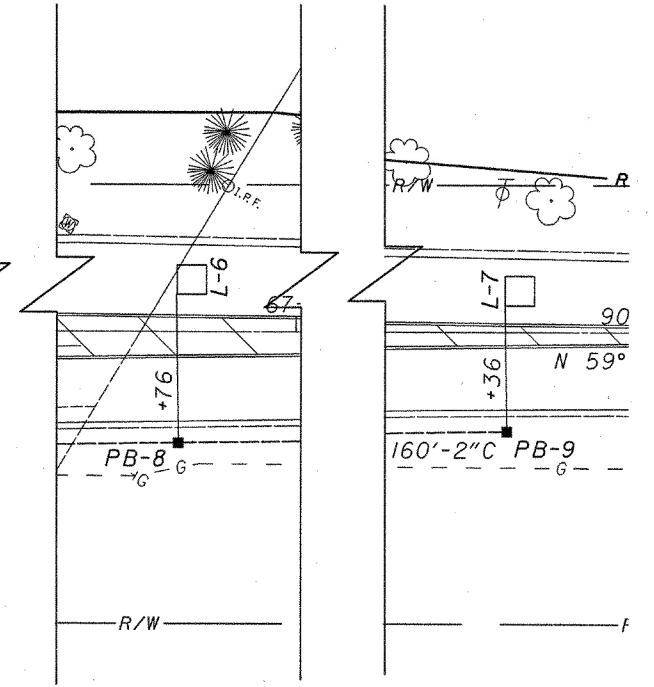


R-31F-36
36"x36"
PROPOSED SIGN
STA. 9+53 CR 9, 30' RT.

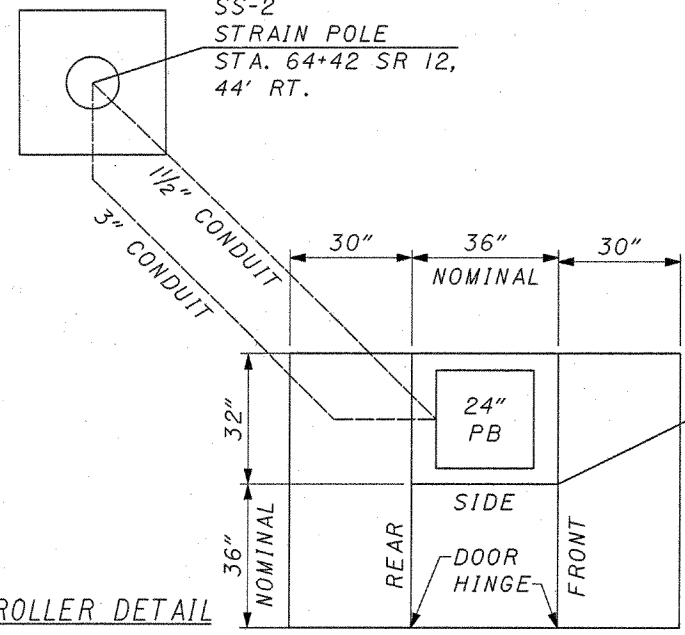


R-310-36
36"x36"
PROPOSED SIGN
STA. 64+36 CR 9, 29' RT.

PROPOSED SIGNING DETAIL

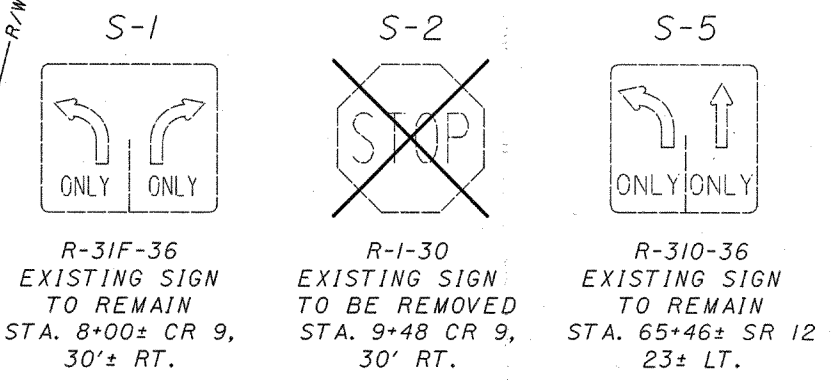


CONTROLLER DETAIL



CONTROLLER
STA. 64+52 SR 12,
54' RT.

EXISTING SIGNING DETAIL

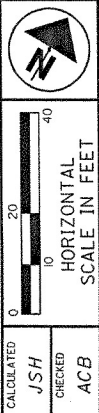


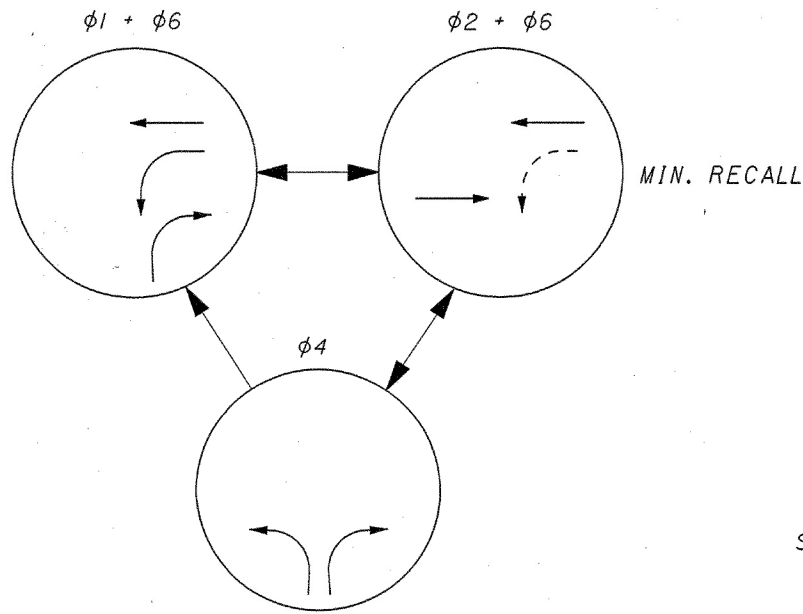
LEGEND

VEHICULAR SIGNAL HEAD	→
CONDUIT	—
PULL BOX	■
EXISTING PAVEMENT MARKING TO BE REMOVED	***
ITEM 829 - STOP LINE, TYPE C	(A)
ITEM 828 - ISLAND MARKING	(B)
ITEM 829 - LANE ARROW, TYPE C	(C)

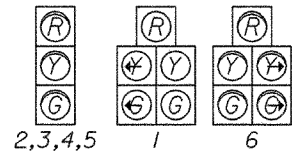
ALL-65-10.34
(CHANGE ORDER)

TRAFFIC SIGNAL PLAN
STATE ROUTE 12 & COUNTY ROAD 9



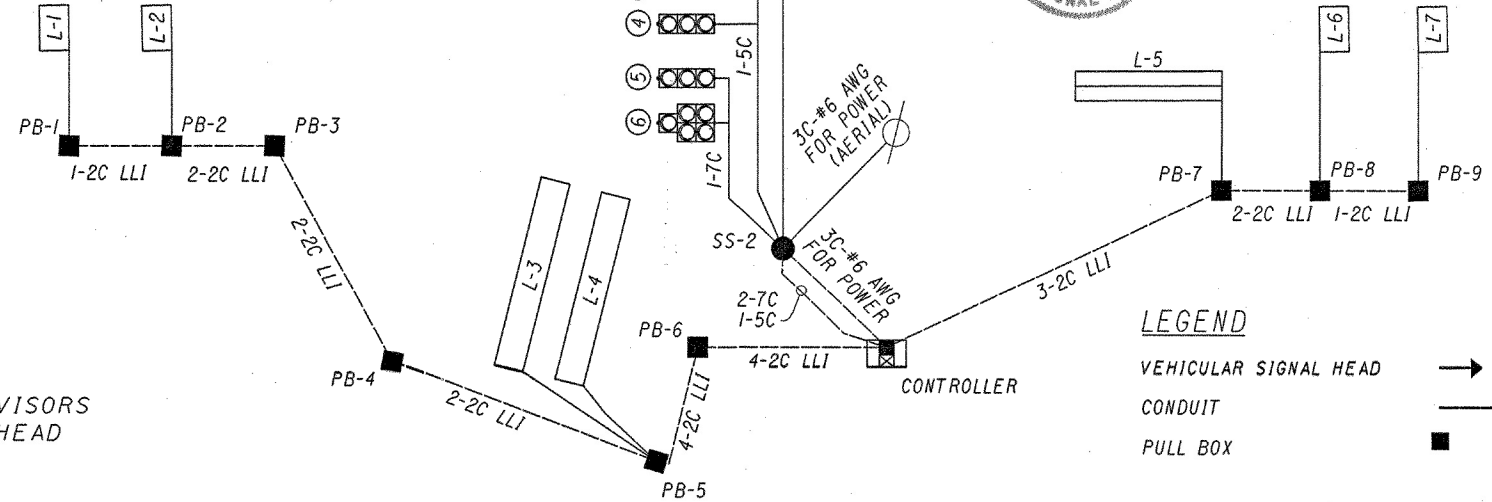


PHASING DIAGRAM



SIGNAL HEAD DETAIL

ALL ALUMINUM HEADS
ALL 12" LENSES
SIGNALS 3,4,5&6 SHALL HAVE TUNNEL VISORS
SIGNALS 3&5 SHALL BE A TWO-WAY HEAD



WIRING DIAGRAM

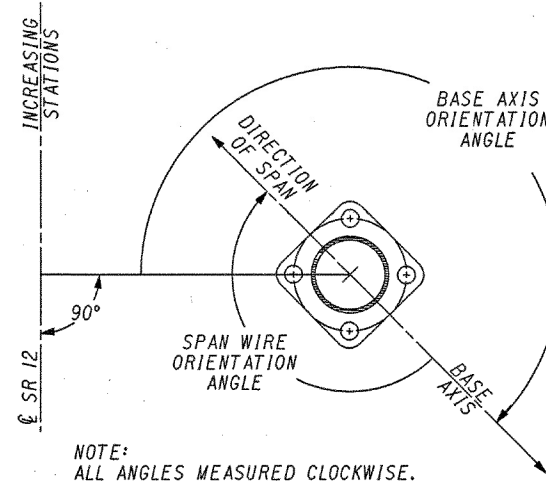


LEGEND

VEHICULAR SIGNAL HEAD →
CONDUIT ———
PULL BOX ■

SIGNAL HEAD	φ1 + φ6		φ2 + φ6		φ4		FLASH
	R/W	CLEAR	R/W	CLEAR	R/W	CLEAR	
1	G	G	G	Y	R	R	Y
2	G	G	G	Y	R	R	Y
3	R	R	G	Y	R	R	Y
4	R	R	R	Y	R	R	Y
5	R	R	R	R	G	Y	R
6	R	R	R	R	G	Y	R

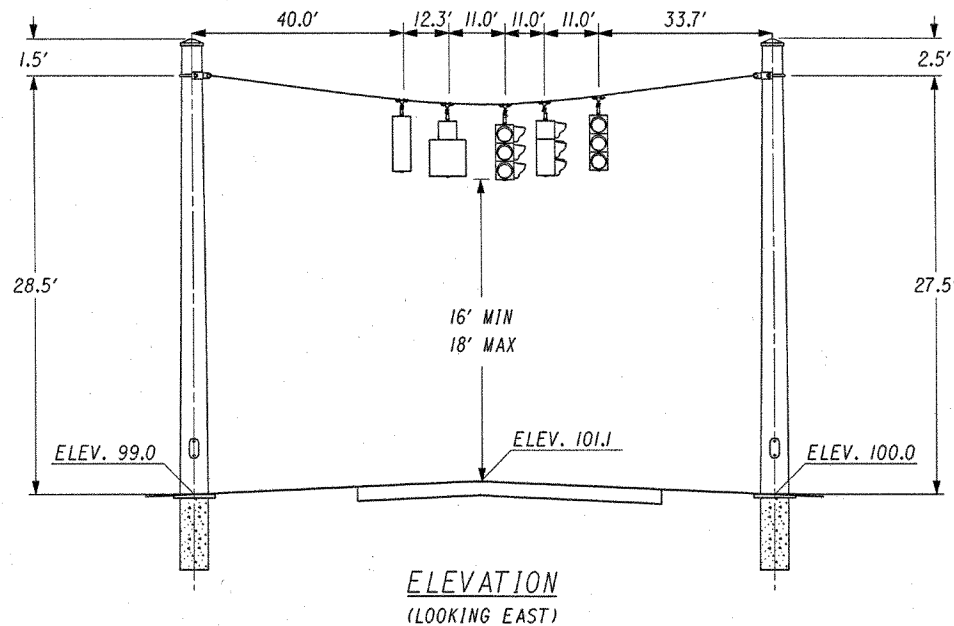
① REMAINS G IF φ1 IS NEXT.



LOOP #	STATION	SIZE	# TURNS	MODE	DELAY	INPUT FILE	SLOT	CHANNEL #	FIELD TERMINAL	PHASE	DELAY INHIBIT PHASE
L1	59+49	6'x6'	4	PULSE	0	I	2	1	12-D,E	2	-
L2	61+03	6'x6'	4	PULSE	0	I	2	2	12-J,K	2	-
L3	9+70	6'x40'	3	PRESENCE	3	I	6	1	16-D,E	4	4
L4	9+70	6'x40'	3	PRESENCE	8	I	6	2	16-J,K	4	4
L5	64+91	6'x30'	3-6-3	PRESENCE	4	I	1	1	11-D,E	1	1
L6	66+76	6'x6'	4	PULSE	0	J	2	1	J2-D,E	6	-
L7	68+36	6'x6'	4	PULSE	0	J	2	2	J2-J,K	6	-

SUPPORT NO.	POLE DESIGN NUMBER	POLE HEIGHT (FT.)	ATTACHMENT HEIGHT (FT.)	BASE AXIS (DEGREES)	SPAN WIRE (DEGREES)	HANDHOLE (DEGREES)	COND. RISER (DEGREES)
SS-1	7	30.0	28.5	138	180	0	--
SS-2	7	30.0	27.5	137	180	0	292

INTERVAL	φ1	φ2	φ4	φ6
INITIAL	7.0	15.0	10.0	15.0
PASSAGE	4.0	3.0	4.0	3.0
YELLOW	5.0	5.0	5.0	5.0
RED CLEAR	1.2	1.2	1.2	1.2
MAX	18.0	66.0	36.0	66.0
RECALL	NONE	MIN	NONE	MIN
MEMORY	OFF	OFF	OFF	OFF
MAX INITIAL	--	43.0	--	43.0
ADDED INITIAL	--	2.2	--	2.2
MIN GAP	--	5.0	--	5.0
TBR	--	44.0	--	44.0
TTR	--	46.0	--	46.0



ITEM	EXT.	QUANTITY	UNIT	DESCRIPTION
625	25300	15	LIN FT	CONDUIT, 1-1/2", 713.04
625	25400	890	LIN FT	CONDUIT, 2", 713.04
625	25500	15	LIN FT	CONDUIT, 3", 713.04
625	25900	51	LIN FT	CONDUIT, JACKED OR DRILLED, 3"
625	29002	890	LIN FT	TRENCH, 24" DEEP
625	30600	1	EACH	PULL BOX, 713.08, 24"
625	30700	9	EACH	PULL BOX, 713.08, 18"
625	32001	3	EACH	GROUND ROD, AS PER PLAN
630	03100	30.0	LIN FT	GROUND MOUNTED SUPPORT, NO. 3 POST
630	80102	16.5	SQ FT	SIGN, FLAT SHEET, TYPE G
632	00301	2	EACH	VEHICULAR SIGNAL HEAD, 3 SECTION, 12" LENS, 1-WAY, AS PER PLAN
632	00501	2	EACH	VEHICULAR SIGNAL HEAD, 5 SECTION, 12" LENS, 1-WAY, AS PER PLAN
632	01101	1	EACH	VEHICULAR SIGNAL HEAD, 3 SECTION, 12" LENS, 2-WAY, AS PER PLAN
632	25000	6	EACH	COVERING OF VEHICULAR SIGNAL HEAD
632	26500	7	EACH	DETECTOR LOOP
632	30200	119	LIN FT	MESSENGER WIRE, 7 STRAND, 3/16" DIAMETER WITH ACCESSORIES
632	40500	154	LIN FT	SIGNAL CABLE, 5 CONDUCTOR, NO. 14 AWG
632	40700	288	LIN FT	SIGNAL CABLE, 7 CONDUCTOR, NO. 14 AWG
632	64000	2	EACH	STRAIN POLE FOUNDATION
632	65200	1996	LIN FT	LOOP DETECTOR LEAD-IN CABLE
632	68300	101	LIN FT	POWER CABLE, 3 CONDUCTOR, NO. 6 AWG
632	70001	1	EACH	POWER SERVICE, AS PER PLAN
632	70300	1	EACH	CONDUIT RISER, 1-1/2" DIAMETER
632	82700	2	EACH	STRAIN POLE, TYPE 81.10, DESIGN 7
SPECIAL	63339300	1	EACH	CONTROLLER, MODEL 2070L, WITH MODEL 332 CABINET AND ACCESSORIES
633	70000	1.0	CU YD	CONCRETE FOR CABINET FOUNDATION
633	70500	28	SQ FT	CONTROLLER WORK PAD

TRAFFIC SIGNAL DETAILS
STATE ROUTE 12 & COUNTY ROAD 9

ALL-65-10.34
(CHANGE ORDER)

J:\JOBS\35404\Techprod\plans\35404cp002.dgn 06-MAY-2002 3:26 PM MGeising