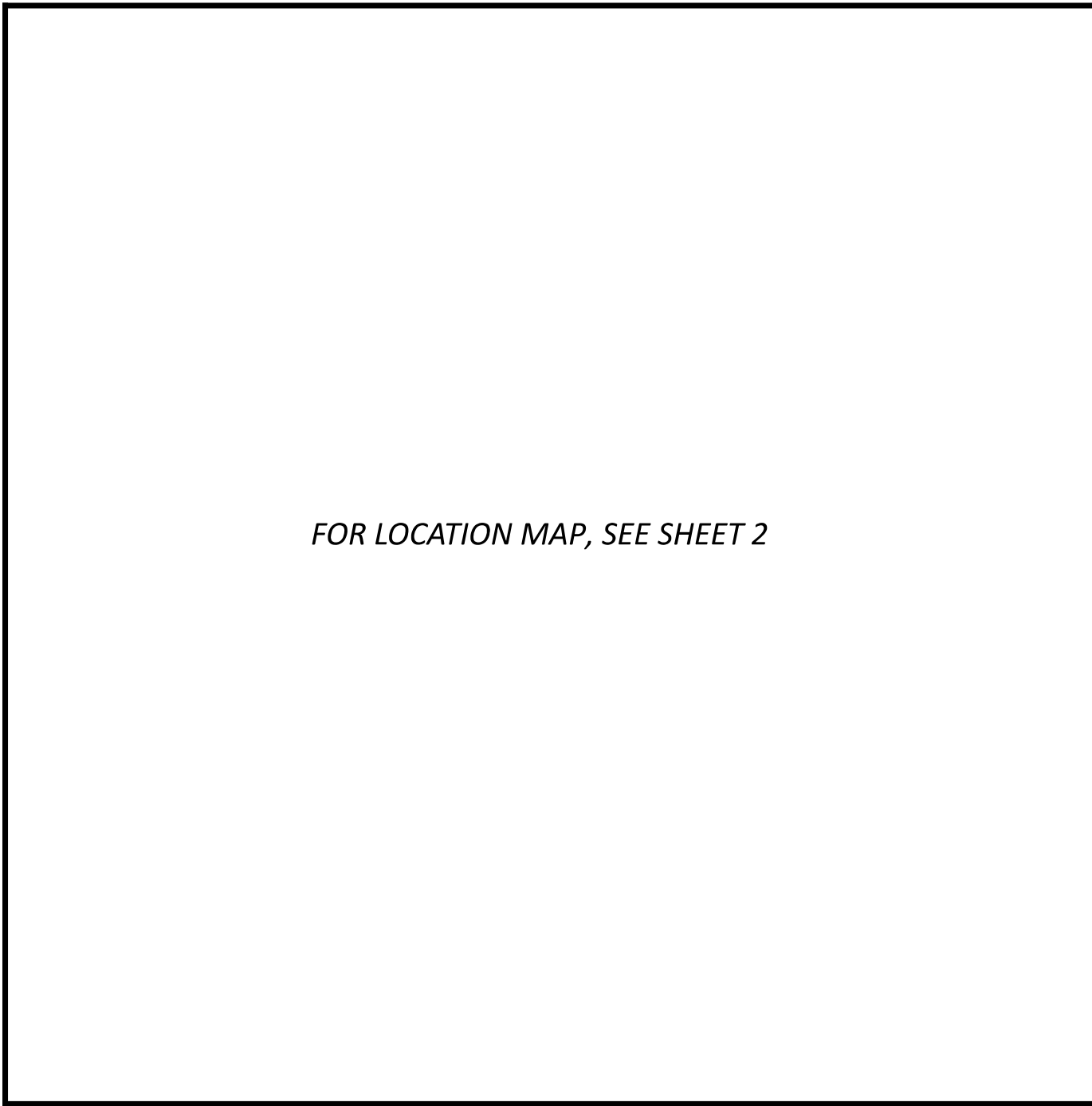


# STATE OF OHIO DEPARTMENT OF TRANSPORTATION

## D01-OL-FY25 ALLEN AND DEFIANCE COUNTIES



**LOCATION MAP**

**INDEX OF SHEETS:**

TITLE SHEET	1
LOCATION MAP	2
GENERAL NOTES	3
MAINTENANCE OF TRAFFIC	4-5, 5A, & 6-8
GENERAL SUMMARY	9, 9A, & 10
GUARDRAIL DETAILS	10A-10I
STRUCTURES OVER 20' SPAN	11-19

**FEDERAL PROJECT NUMBER**

E240(638)

**RAILROAD INVOLVEMENT**

NONE

**PROJECT DESCRIPTION**

OVERLAY BRIDGE DECKS ON VARIOUS STRUCTURES THROUGHOUT DISTRICT ONE.

**EARTH DISTURBED AREAS**

PROJECT EARTH DISTURBED AREA: 0.0 ACRES  
 ESTIMATED CONTRACTOR EARTH DISTURBED AREA: 0.0 ACRES  
 NOTICE OF INTENT EARTH DISTURBED AREA: N/A (NOI NOT REQUIRED)

**LIMITED ACCESS**

THIS IMPROVEMENT IS ESPECIALLY DESIGNED FOR THROUGH TRAFFIC AND HAS BEEN DECLARED A LIMITED ACCESS HIGHWAY OR FREEWAY BY ACTION OF THE DIRECTOR IN ACCORDANCE WITH THE PROVISIONS OF SECTION 5511.02 OF THE OHIO REVISED CODE.

**2023 SPECIFICATIONS**

THE STANDARD SPECIFICATIONS OF THE STATE OF OHIO, DEPARTMENT OF TRANSPORTATION, INCLUDING SUPPLEMENTAL SPECIFICATIONS LISTED IN THE PLANS, CHANGES LISTED IN THE PROPOSAL, AND THE SUPPLEMENTAL SPECIFICATION 800 VERSION INDICATED ON THE PROPOSAL SHALL GOVERN THIS IMPROVEMENT.

I HEREBY APPROVE THESE PLANS AND DECLARE THAT THE MAKING OF THIS IMPROVEMENT WILL REQUIRE THE CLOSING TO TRAFFIC OF THE HIGHWAY EXCEPT AS NOTED ON SHEETS 4-8, AND THAT PROVISIONS FOR THE MAINTENANCE AND SAFETY OF TRAFFIC WILL BE AS SET FORTH ON THE PLANS AND ESTIMATES.

*Christopher A. Hughes*

Christopher A. Hughes, P.E.  
District 01 Deputy Director

*Pamela Boratyn*

Pamela Boratyn  
Director, Department of Transportation

**DESIGN EXCEPTIONS**

NONE REQUIRED

**ADA DESIGN WAIVERS**

NONE REQUIRED

**UNDERGROUND UTILITIES**  
Contact Two Working Days  
Before You Dig

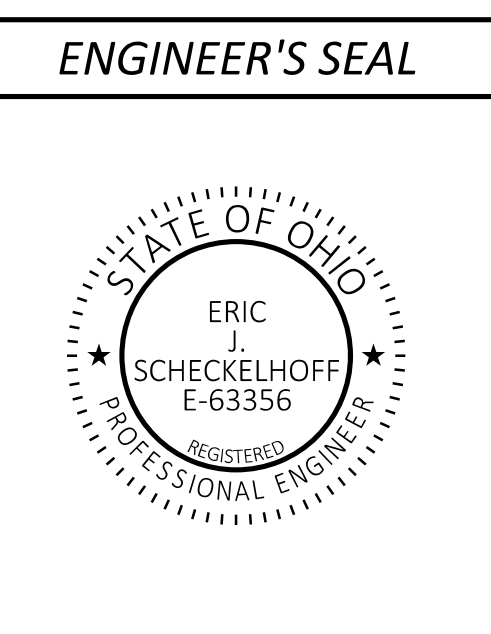


**OHIO811.org**  
Before You Dig

**OHIO811, 8-1-1, or 1-800-362-2764**  
(Non members must be called directly)

PLAN PREPARED BY:  
OHIO DEPT. OF TRANSPORTATION, DISTRICT 1  
1885 N. MCCULLOUGH ST.  
LIMA, OH 45801

STANDARD CONSTRUCTION DRAWINGS				SUPPLEMENTAL SPECIFICATIONS	SPECIAL PROVISIONS
DM-4.3	1/15/16	TC-41.20	10/18/13	800	7/19/24
DM-4.4	1/15/16	TC-42.10	10/18/13	808	7/19/24
		TC-42.20	10/18/13	832	7/19/24
		TC-52.10	10/18/13	843	1/19/24
		TC-52.20	1/15/21	848	7/19/24
MT-095.40	7/21/23			908	10/20/17
MT-096.11	7/21/23	AS-1-15	1/20/23	921	7/19/24
MT-096.20	7/21/23	PCB-91	7/17/20		
MT-097.10	4/19/19	DBR-3-11	7/15/11		
MT-101.60	4/21/23	SBR-3-20	7/19/24		
		TBR-1-11	1/18/13		
MT-101.70	7/19/24				
MT-101.75	7/21/23	BP-3.1	1/19/24		
MT-101-90	7/17/20	BP-5.1	7/15/22		
MT-104.10	1/19/24				
MT-105.10	1/17/20				



TITLE SHEET

DESIGN AGENCY



DESIGNER

KRH

REVIEWER

EJS 11-29-24

PROJECT ID

119043

SHEET TOTAL

1 | 19

D01-OL-FY25

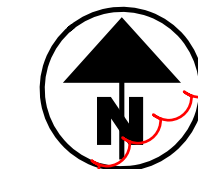
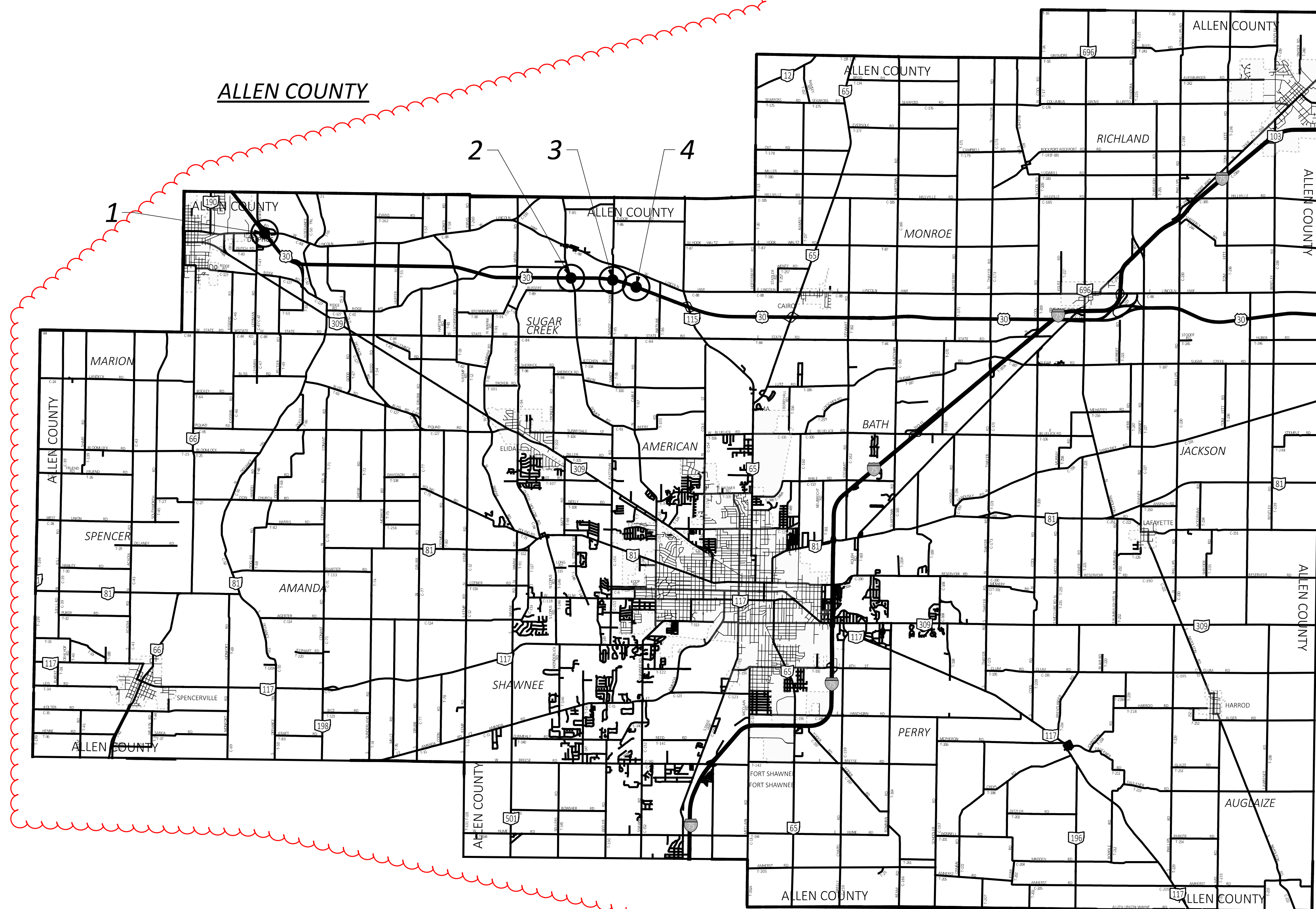
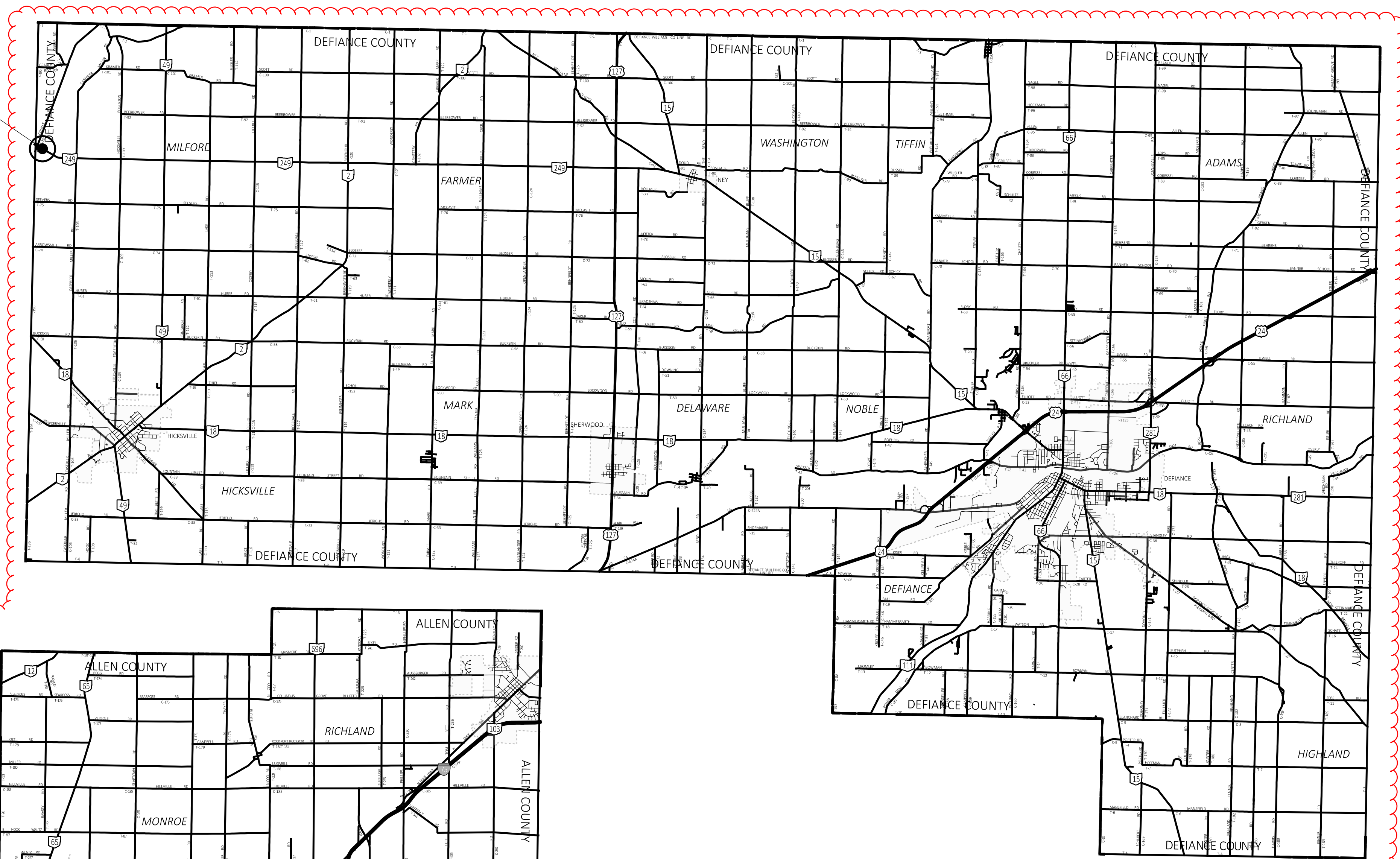
MODEL: Sheet PAPER: 34x22 (in.) DATE: 12/4/2024 TIME: 11:22:26 AM USER: eschecke pvc:\ohio\ol-pw-bentley.com\ohio\ol-pw-02\Documents\01 Active Projects\District 01\_D01119043\00-Engineering\Roadway\Sheets\119043\_GT001.dgn

1	ALL-30-1.13	FIFTH STREET OVER US 30
2	ALL-30-7.90	GOMER RD OVER US 30
3	ALL-30-8.81	SANDY POINT RD OVER US 30
4	ALL-30-9.27 L/9.31 R	US 30 OVER PIKE RUN
5	DEF-249-0.09	SR 249 OVER ST. JOSEPH RIVER

● - PROJECT LOCATION



- 1. LATITUDE: 40°50'49" LONGITUDE: 84°18'27"
- 2. LATITUDE: 40°50'06" LONGITUDE: 84°11'01"
- 3. LATITUDE: 40°50'05" LONGITUDE: 84°10'00"
- 4. LATITUDE: 40°49'58" LONGITUDE: 84°09'26"
- 5. LATITUDE: 41°23'09" LONGITUDE: 84°48'07"



LOCATION MAP

DESIGN AGENCY



DESIGNER  
 KRH  
 REVIEWER  
 XXX MM-DD-YY  
 PROJECT ID  
 119043  
 SHEET TOTAL  
 2 | 19







**SUPPLEMENTAL SPECIFICATIONS**

REFER TO THE FOLLOWING STANDARD BRIDGE DRAWING(S):

- DBR-3-11 DATED 7/15/11
- PSB-91 DATED 7/17/20
- SBR-3-20 DATED 7/19/24
- TBR-1-11 DATED 1/18/13

REFER TO THE FOLLOWING SUPPLEMENTAL SPECIFICATIONS:

- 843 DATED 1/19/24
- 848 DATED 7/19/24

**DECK PROTECTION METHOD**

LATEX MODIFIED CONCRETE OVERLAY

**EXISTING BRIDGE PLANS**

EXISTING PLANS ARE AVAILABLE AND MAY BE INPECTED IN THE ODOT DISTRICT 1 OFFICE IN LIMA.

**EXISTING STRUCTURE VERIFICATION**

DETAILS AND DIMENSIONS SHOWN ON THESE PLANS PERTAINING TO THE EXISTING STRUCTURE HAVE BEEN OBTAINED FROM PLANS OF THE EXISTING STRUCTURE AND FROM FIELD OBSERVATIONS AND MEASUREMENTS. CONSEQUENTLY, THEY ARE INDICATIVE OF THE EXISTING STRUCTURE AND THE PROPOSED WORK BUT THEY SHALL BE CONSIDERED TENTATIVE AND APPROXIMATE. THE CONTRACTOR IS REFERRED TO C&MS, SECTIONS 102.05 AND 105.02. BASE CONTRACT BID PRICES UPON A RECOGNITION OF THE UNCERTAINTIES DESCRIBED ABOVE AND UPON A PREBID EXAMINATION OF THE EXISTING STRUCTURE. HOWEVER, THE DEPARTMENT WILL PAY FOR ALL PROJECT WORK BASED UPON ACTUAL DETAILS AND DIMENSIONS THAT HAVE BEEN VERIFIED IN THE FIELD.

**FINISHING EQUIPMENT SUPPORT PLAN**

THE CONTRACTOR IS HEREBY ADVISED THAT HE/SHE SHALL NOT BE PERMITTED TO USE THE RETROFIT RAILING TO SUPPORT THE FINISHING EQUIPMENT. THE CONTRACTOR SHALL SUBMIT TO THE DISTRICT CONSTRUCTION ENGINEER FOR APPROVAL BY THE DIRECTOR, A PLAN DETAILING THE METHOD TO BE USED TO SUPPORT THE FINISHING EQUIPMENT. THIS PLAN SHALL BE SUBMITTED AND APPROVED PRIOR TO THE PLACING OF PROPOSED DECK OVERLAY.

**ITEM 512 - SEALING OF CONCRETE SURFACES (NON-EPOXY)**

THE CONTRACTOR SEAL ALL LOCATIONS DESCRIBED IN THE TABLE BELOW AND SHOWN ON THE TRANSVERSE SECTION ON SHEET 13.

STRUCTURE	SEALING LOCATIONS
ALL-30-1.130	SUPERSTRUCTURE

PAYMENT FOR SEALING THE LOCATIONS ABOVE SHALL BE AT THE UNIT PRICE BID PER SY FOR ITEM 512 - SEALING OF CONCRETE SURFACES (NON-EPOXY) WHICH SHALL INCLUDE ALL LABOR, EQUIPMENT, MATERIALS, AND INCIDENTALS NECESSARY TO COMPLETE THE ABOVE WORK.

**DEMOLITION DEBRIS**

THE CONTRACTOR SHALL TAKE PRECAUTIONS TO AVOID AND/OR LIMIT DEMOLITION FROM ENTERING THE WATERWAY/RIVER. ANY MATERIAL THAT DOES ENTER THE WATERWAY/RIVER SHALL BE IMMEDIATELY REMOVED.

**ITEM 848 - SURFACE PREPARATION USING HYDRODEMOLITION, AS PER PLAN**

THIS ITEM SHALL FOLLOW SUPPLEMENTAL SPECIFICATION 848 EXCEPT THAT THE TOP SURFACE OF THE CONCRETE BRIDGE DECK SHALL BE COMPLETELY REMOVED TO A DEPTH "D" OF 1.25".

**ITEM 519 - PATCHING CONCRETE STRUCTURE, AS PER PLAN**

A QUANTITY OF THIS ITEM IS INCLUDED IN THE ESTIMATED QUANTITIES TO REPAIR DETERIORATED AREAS OF CONCRETE WHERE THE DEPTH OF THE PATCH IS GREATER THAN 3 INCHES, AS LOCATED BY THE PROJECT ENGINEER.

PRIOR TO THE SURFACE CLEANING SPECIFIED IN C&MS 519.04 AND WITHIN 24 HOURS OF PLACING PATCHING MATERIAL, BLAST CLEAN ALL SURFACES TO BE PATCHED INCLUDING THE EXPOSED STEEL REINFORCEMENT. ACCEPTABLE METHODS INCLUDE: HIGH-PRESSURE WATER BLASTING WITH, OR WITHOUT, ABRASIVES IN THE WATER, ABRASIVE BLASTING WITH CONTAINMENT OR VACUUM ABRASIVE BLASTING.

A LIST OF ESTIMATED LOCATIONS AND ESTIMATED QUANTITIES FOR PATCHING ARE LISTED IN THE STRCUTURE PLAN SHEETS AND ESTIMATED QUANTITIES.

PAYMENT FOR PATCHING AS DESCRIBED ABOVE SHALL BE AT THE UNIT PRICE BID PER SF FOR ITEM 519 - PATCHING CONCRETE STRUCTURE, AS PER PLAN WHICH SHALL INCLUDE ALL LABOR, EQUIPMENT, MATERIALS, AND INCIDENTALS NECESSARY TO COMPLETE THE ABOVE WORK.

**ITEM 843 - PATCHING CONCRETE STRUCTURES WITH TROWELABLE MORTAR**

A QUANTITY IS INCLUDED IN THE ESTIMATED QUANTITIES TO REPAIR ANY DETERIORATED AREAS ON THE LEFT AND RIGHT PARAPETS AND SAFETY CURBS, AND THE DECK EDGES WITH ITEM 843 - PATCHING CONCRETE STRUCTURES WITH TROWEL-ABLE MORTAR WHICH SHALL INCLUDE ALL LABOR, EQUIPMENT, MATERIALS AND INCIDENTALS NECESSARY TO COMPLETE THE WORK.

**ITEM 510 - DOWL HOLES WITH NONSHRINK, NONMETALLIC GROUT, AS PER PLAN**

IN ADDITION TO THE PROVISIONS OF ITEM 510, USE EITHER OF THE BELOW APPROVED ADHESIVE ANCHORING SYSTEMS PROVIDED OR AN APPROVED EQUIVALENT. SUSBSTITUTE ADHESIVE ANCHORING SYSTEMS SHALL MEET THE REQUIREMENTS OF ICCES AC308 TABLE 3.8.

- DEWALT - POWERS FASTERNERS - PURE110+ EPOXY ADHESIVE ANCHOR SYSTEM AND POST-INSTALLED REINFORCING BAR CONNECTION SYSTEM IN CRACKED AND UNCRACKED CONCRETE.

- HILTI INC. - HILTI HIT-HY 200 ADHESIVE ANCHORS AND POST-INSTALLED REINFORCING BAR CONNECTIONS IN CONCRETE.

**ITEM 509 - EPOXY COATED STEEL REINFORCEMENT, AS PER PLAN**

IN ADDITION TO THE PROVISIONS OF ITEM 509, FIELD BEND AND/OR FIELD CUT THE STEEL REINFORCEMENT DESIGNATED IN THE PLANS, AS NECESSARY, IN ORDER TO MAINTAIN THE REQUIRED CLEARANCES AND BAR SPACINGS. REPAIR ALL DAMAGE TO THE EPOXY COATING, AS A RESULT OF THIS WORK, ACCORDING TO C&MS 709.00

**ITEM 516 - STRUCTURAL JOINT OR JOINT SEALER. MISC.: USING DOWSIL 902 (RCS)**

ALL NECESSARY LABOR, MATERIALS AND EQUIPMENT TO CLEAN AND SEAL THE EXISTING SLIDING DECK JOINTS.

THE SEALANT SHALL BE DOWSIL 902 RCS OR APPROVED EQUIVALENT.

JOINTS SHALL BE THOROUGHLY CLEANED BY ABRASIVE BLASTING AND/OR POWER TOOLS AND WITH A SUFFICIENT AMOUNT OF COMPRESSED AIR TO REMOVE ANY DIRT OR DELETERIOUS MATTER WHEN THE SURFACES ARE THOROUGHLY CLEAN AND DRY. JUST PRIOR TO PLACING THE JOINT SEALER, COMPRESSED AIR HAVING A PRESSURE OF AT LEAST 90 P.S.I. SHALL BE USED TO BLOW OUT THE JOINT AND REMOVE ALL TRACES OF DUST.

AFTER CLEANING AND DRYING, THE JOINT SHALL BE PRIMED WITH CARBOLINE CARBOGUARD 635 OR EQUIVALENT. DOW CORNING® 902 RCS JOINT SEALANT INSTALLATION GUIDELINES (FORM NO. 62-272). AFTER PLACEMENT OF THE CARBOLINE CARBOGUARD 635 OR EQUIVALENT WAIT A MINIMUM OF 1 HOUR BEFORE APPLYING JOINT SEALANT OR ALLOWING TRAFFIC TO PASS OVER THE PRIMED JOINT. A BOND-BREAKER MATERIAL SHALL BE APPLIED TO THE BOTTOM OF THE JOINT.

THE SILICONE SEALANT MATERIALS SHALL BE INSTALLED AS PER MANUFACTURER'S RECOMMENDATIONS, EXCEPT AS MODIFIED BY THESE NOTES. THE SEALANT SHALL BE INSTALLED WHEN THE AMBIENT TEMPERATURE IS 60 DEGREES F OR HIGHER. TRAFFIC SHALL NOT BE ALLOWED ON THE JOINT FOR ONE HOUR AFTER THE APPLICATION OF THE SEALANT.

SEE BRIDGE PLAN SHEET 9 (PLAN SHEET 19) FOR ADDITIONAL DETAILS.

PAYMENT FOR ALL EQUIPMENT, MATERIALS, AND LABOR REQUIRED TO PERFORM THE WORK OUTLINED ABOVE AND AS SHOWN ON BRIDGE PLAN SHEET 9 (PLAN SHEET 19), INCLUDING THE PRIMER (CARBOLINE CARBOGUARD 635) FOR THE JOINT, SHALL BE INCLUDED IN THE UNIT PRICE BID PER FT FOR ITEM 516 - STRUCTURAL JOINT OR JOINT SEAL, MISC.: USING DOWSIL 902 RCS, UNLESS SEPARATELY ITEMIZED IN THE PLANS.

DESIGN AGENCY



DESIGNER

KRH

REVIEWER

EJS 11-29-24

PROJECT ID

119043

SUBSET TOTAL

1 9

SHEET TOTAL

11 19

ESTIMATED QUANTITIES (CARRIED TO GENERAL SUMMARY)										
ITEM	EXTENSION	TOTAL	UNIT	DESCRIPTION	APP. SLAB	ABUT.	SUPER.	GEN.	PIER	SHEET #
<b>ALL-30-1.130</b>										
512	73500	1316	SY	TREATING CONCRETE BRIDGE DECKS WITH GRAVITY FED RESIN (AND APP. SLABS)	257		1059			
512	10050	6	SY	SEALING OF CONCRETE SURFACES (NONEPOXY)					6	
516	14600	104	FT	STRUCTURAL JOINT OR JOINT SEALER, MISC.: USING DOW CORNING 902		104				2 (11/19)
519	11101	141	SF	PATCHING CONCRETE STRUCTURE, AS PER PLAN		78		23	40	2 (11/19)
843	50000	141	SF	PATCHING CONCRETE STRUCTURES WITH TROWELABLE MORTAR		78		23	40	2 (11/19)
<b>ALL-30-7.897</b>										
202	11200	LS		PORTIONS OF STRUCTURE REMOVED			LS			
202	23500	978	SY	WEARING COURSE REMOVED (T=1.25")	178		800			
202	38000	325	FT	GUARDRAIL REMOVED #				325		
202	47000	4	EACH	BRIDGE TERMINAL ASSEMBLY REMOVED #				4		
516	14600	63	FT	STRUCTURAL JOINT OR JOINT SEALER MISC.: USING DOW CORNING 902		63				2 (11/19)
517	72750	541.5	FT	RAILING (THRIE BEAM RETROFIT)			541.5			
519	11101	35	SF	PATCHING CONCRETE STRUCTURE, AS PER PLAN			35			2 (11/19)
606	13001	325	FT	GUARDRAIL, TYPE 5, AS PER PLAN #				325		(3/19)
606	35121	4	EACH	BRIDGE TERMINAL ASSEMBLY, TYPE 3, AS PER PLAN #				4		(3/19)
626	110	10	EACH	BARRIER REFLECTOR, TYPE 2 (BIDIRECTIONAL) #				10		
843	50000	35	SF	PATCHING CONCRETE STRUCTURES WITH TROWELABLE MORTAR			35			2 (11/19)
848	10100	978	SY	LATEX MODIFIED CONCRETE OVERLAY USING HYDRODEMOLITION (T=2.25")	178		800			
848	20000	978	SY	SURFACE PREPARATION USING HYDRODEMOLITION (T=1.0")	178		800			
848	30100	11	CY	LATEX MODIFIED CONCRETE OVERLAY (VARIABLE THICKNESS), MATERIAL ONLY	5		6			
848	50000	60	SY	HAND CHIPPING	60					
848	50100	LS		TEST SLAB				LS		
848	50200	6	CY	FULL-DEPTH REPAIR			6			
<b>ALL-30-8.807</b>										
202	11200	LS		PORTIONS OF STRUCTURE REMOVED			LS			
202	23500	756	SY	WEARING COURSE REMOVED (T=1.25")	134		622			
202	38000	325	FT	GUARDRAIL REMOVED #				325		
202	47000	4	EACH	BRIDGE TERMINAL ASSEMBLY REMOVED #				4		
512	10050	8	SY	SEALING OF CONCRETE SURFACES (NONEPOXY)					8	
516	14600	49	FT	STRUCTURAL JOINT OR JOINT SEALER MISC.: USING DOW CORNING 902		49				2 (11/19)
517	72750	507	FT	RAILING (THRIE BEAM RETROFIT)			507			
519	11101	103	SF	PATCHING CONCRETE STRUCTURE, AS PER PLAN			63		40	2 (11/19)
606	13001	325	FT	GUARDRAIL, TYPE 5, AS PER PLAN #				325		(3/19)
606	35121	4	EACH	BRIDGE TERMINAL ASSEMBLY, TYPE 3, AS PER PLAN #				4		(3/19)
626	110	10	EACH	BARRIER REFLECTOR, TYPE 2 (BIDIRECTIONAL) #				10		
843	50000	103	SF	PATCHING CONCRETE STRUCTURES WITH TROWELABLE MORTAR			63		40	2 (11/19)
848	10100	756	SY	LATEX MODIFIED CONCRETE OVERLAY USING HYDRODEMOLITION (T=2.25")	134		622			
848	20000	756	SY	SURFACE PREPARATION USING HYDRODEMOLITION (T=1.0")	134		622			
848	30100	19	CY	LATEX MODIFIED CONCRETE OVERLAY (VARIABLE THICKNESS), MATERIAL ONLY	5		14			
848	50000	60	SY	HAND CHIPPING	60					
848	50100	LS		TEST SLAB				LS		
848	50200	4	CY	FULL-DEPTH REPAIR			4			

# - ROADWAY ITEMS INCLUDED WITH STRUCTURE ITEMS AND CARRIED TO GENERAL SUMMARY AND PLACED UNDER ROADWAY, PAVEMENT OR TRAFFIC CONTROL SECTIONS.

NOTE: FOR SHEET #, THE FIRST DIGIT IS THE BRIDGE PLAN SHEET NUMBER, THE FOLLOWING NUMBERS IN PARENTHESES ARE THE OVER ALL PLAN SHEET NUMBER.

ESTIMATED QUANTITIES (CARRIED TO GENERAL SUMMARY)										
ITEM	EXTENSION	TOTAL	UNIT	DESCRIPTION	APP. SLAB	ABUT.	SUPER.	GEN.	PIER	SHEET #
<b>ALL-30-9.268L</b>										
202	23500	424	SY	WEARING COURSE REMOVED (T=1.75")						135
409	30000	80	FT	SAWING AND SEALING ASPHALT CONCRETE PAVEMENT JOINTS #					80	
512	10050	12	SY	SEALING OF CONCRETE SURFACES (NONEPOXY)						12
517	75600	150	FT	DEEP BEAM BRIDGE RETROFIT RAILING						147
SPECIAL	51822300	130	FT	STEEL DRIP STRIP						130
519	11101	154	SF	PATCHING CONCRETE STRUCTURE, AS PER PLAN						154
843	50000	154	SF	PATCHING CONCRETE STRUCTURES WITH TROWELABLE MORTAR						154
848	10100	424	SY	LATEX MODIFIED CONCRETE OVERLAY USING HYDRODEMOLITION (T=2.75")	135					289
848	20000	424	SY	SURFACE PREPARATION USING HYDRODEMOLITION (T=1.0")	135					289
848	30100	28	CY	LATEX MODIFIED CONCRETE OVERLAY (VARIABLE THICKNESS), MATERIAL ONLY	10					18
848	50000	64	SY	HAND CHIPPING	55					9
848	50100	LS		TEST SLAB				LS		
848	50200	3	CY	FULL-DEPTH REPAIR						3
<b>ALL-30-9.306R</b>										
202	23500	424	SY	WEARING COURSE REMOVED (T=1.75")						135
409	30000	80	FT	SAWING AND SEALING ASPHALT CONCRETE PAVEMENT JOINTS #					80	
517	75600	150	FT	DEEP BEAM BRIDGE RETROFIT RAILING						147
SPECIAL	51822300	130	FT	STEEL DRIP STRIP						130
848	10100	424	SY	LATEX MODIFIED CONCRETE OVERLAY USING HYDRODEMOLITION (T=2.75")	135					289
848	20000	424	SY	SURFACE PREPARATION USING HYDRODEMOLITION (T=1.0")	135					289
848	30100	18	CY	LATEX MODIFIED CONCRETE OVERLAY (VARIABLE THICKNESS), MATERIAL ONLY	6					12
848	50000	55	SY	HAND CHIPPING	55					
848	50100	LS		TEST SLAB				LS		
848	50200	1	CY	FULL-DEPTH REPAIR						1
<b>DEF-249-0.094</b>										
202	11200	LS		PORTIONS OF STRUCTURE REMOVED				LS		
202	23500	654	SY	WEARING COURSE REMOVED (T=1.25")	134					520
202	38000	325	FT	GUARDRAIL REMOVED #						325
202	38500	400	FT	BRIDGE RAILING REMOVED						400
202	47000	4	EACH	BRIDGE TERMINAL ASSEMBLY REMOVED #						4
509	10000	4001	LB	EPOXY COATED STEEL REINFORCEMENT						4001
509	30020	5253	FT	NO. 4 DEFORMED GFRP REINFORCEMENT						5253
510	10001	1120	EACH	DOWEL HOLES WITH NONSHRINK, NONMETALLIC GROUT, AS PER PLAN						1120
511	34448	26	CY	CLASS QC2 CONCRETE, BRIDGE DECK (PARAPET)						26
516	14600	48	FT	STRUCTURAL JOINT OR JOINT SEALER MISC.: USING DOW CORNING 902		48				2 (11/19)
519	11101	26.5	SF	PATCHING CONCRETE STRUCTURE, AS PER PLAN						26.5
606	13001	325	FT	GUARDRAIL, TYPE 5, AS PER PLAN #						325
606	26501	2	EACH	ANCHOR ASSEMBLY, TYPE T, AS PER PLAN #						2
606	35001	4	EACH	BRIDGE TERMINAL ASSEMBLY, TYPE 1, AS PER PLAN #						4
609	23000	72	FT	COMBINATION CURB AND GUTTER, TYPE 4 #						72
626	00102	6	EACH	BARRIER REFLECTOR, TYPE 1 (BIDIRECTIONAL) #						6
626	00110	6	EACH	BARRIER REFLECTOR, TYPE 2 (BIDIRECTIONAL) #						6
843	50000	26.5	SF	PATCHING CONCRETE STRUCTURES WITH TROWELABLE MORTAR						26.5
848	10100	654	SY	LATEX MODIFIED CONCRETE OVERLAY USING HYDRODEMOLITION (T=2.25")	134					520
848	20000	654	SY	SURFACE PREPARATION USING HYDRODEMOLITION (T=1.0")	134					520
848	30100	25	CY	LATEX MODIFIED CONCRETE OVERLAY (VARIABLE THICKNESS), MATERIAL ONLY	5					20
848	50000	45	SY	HAND CHIPPING	45					
848	50100	LS		TEST SLAB				LS		
848	50200	3	CY	FULL-DEPTH REPAIR						3

ESTIMATED QUANTITIES  
VARIOUS STRUCTURES

DESIGN AGENCY



DESIGNER

KRH

REVIEWER

EJS 11-29-24

PROJECT ID

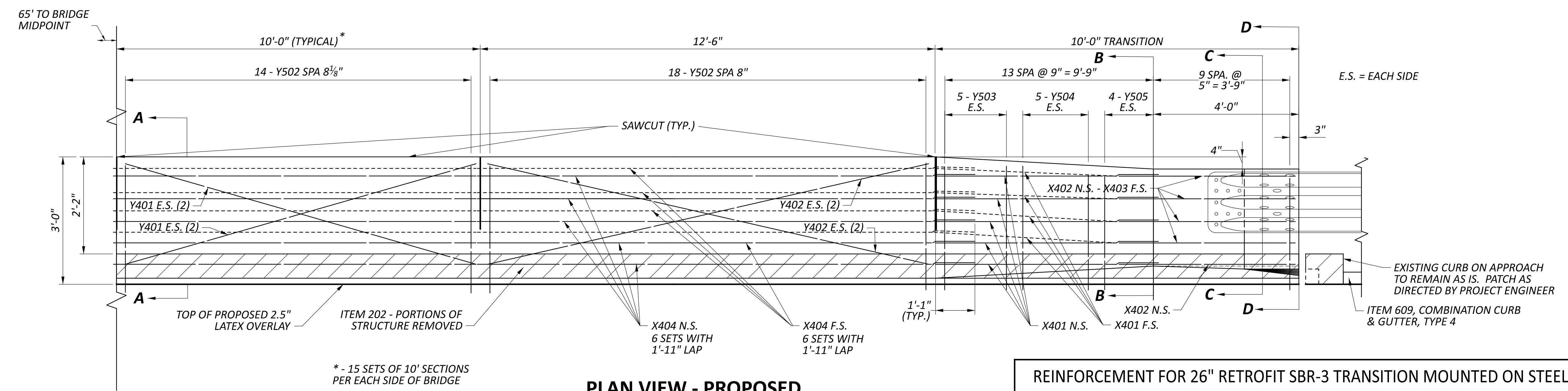
119043

SUBSET

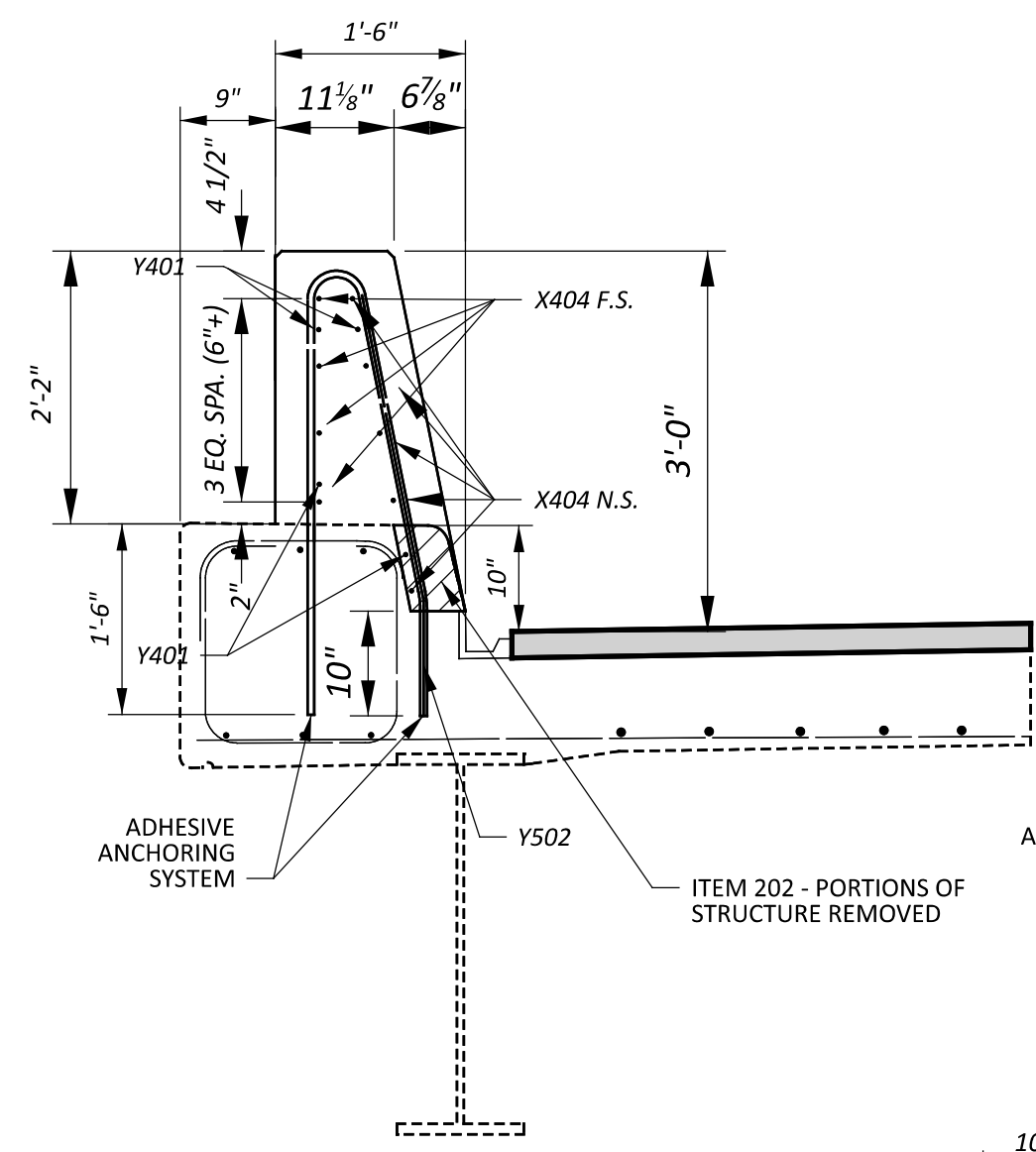
2 9

SHEET

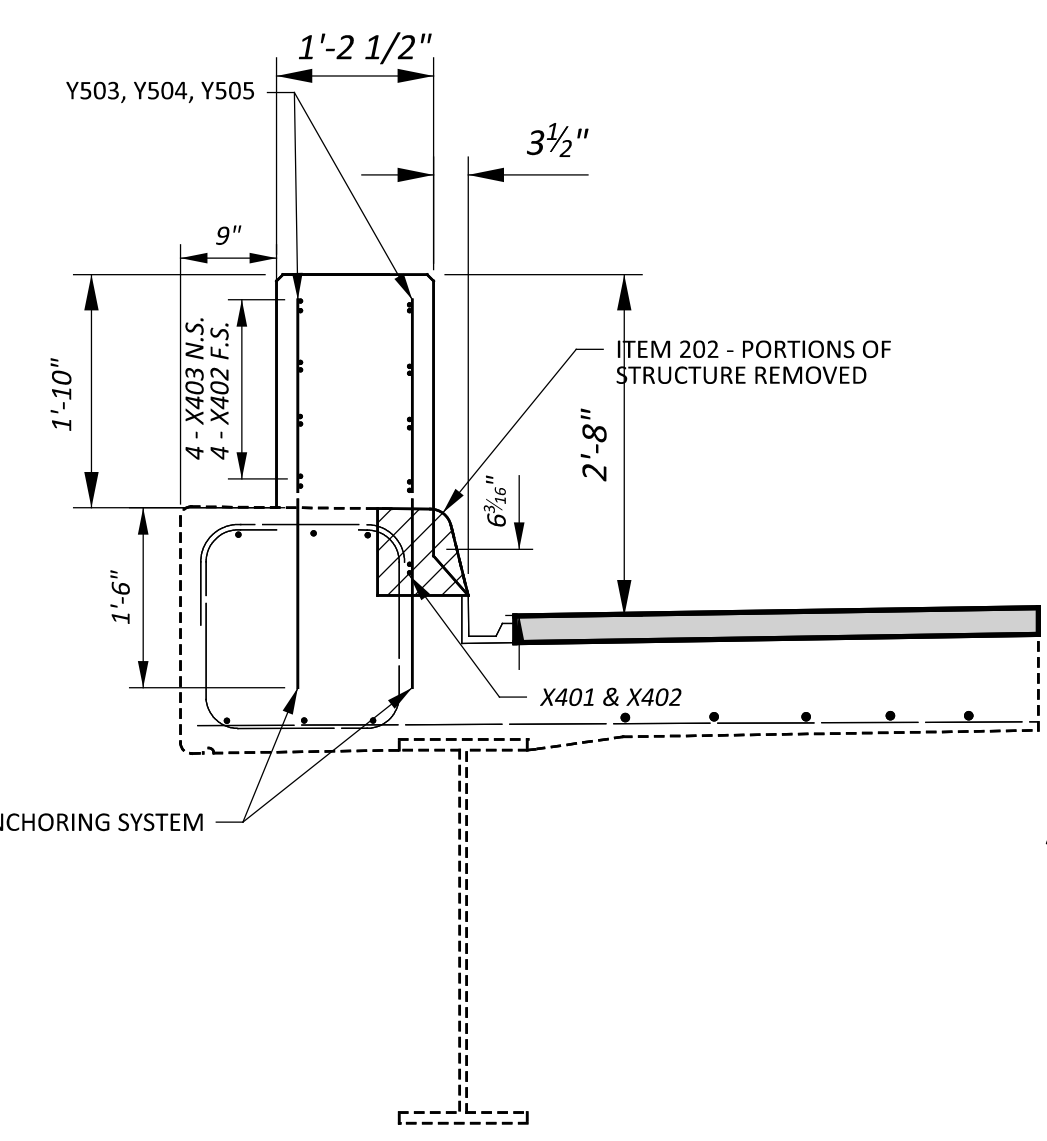
12 19



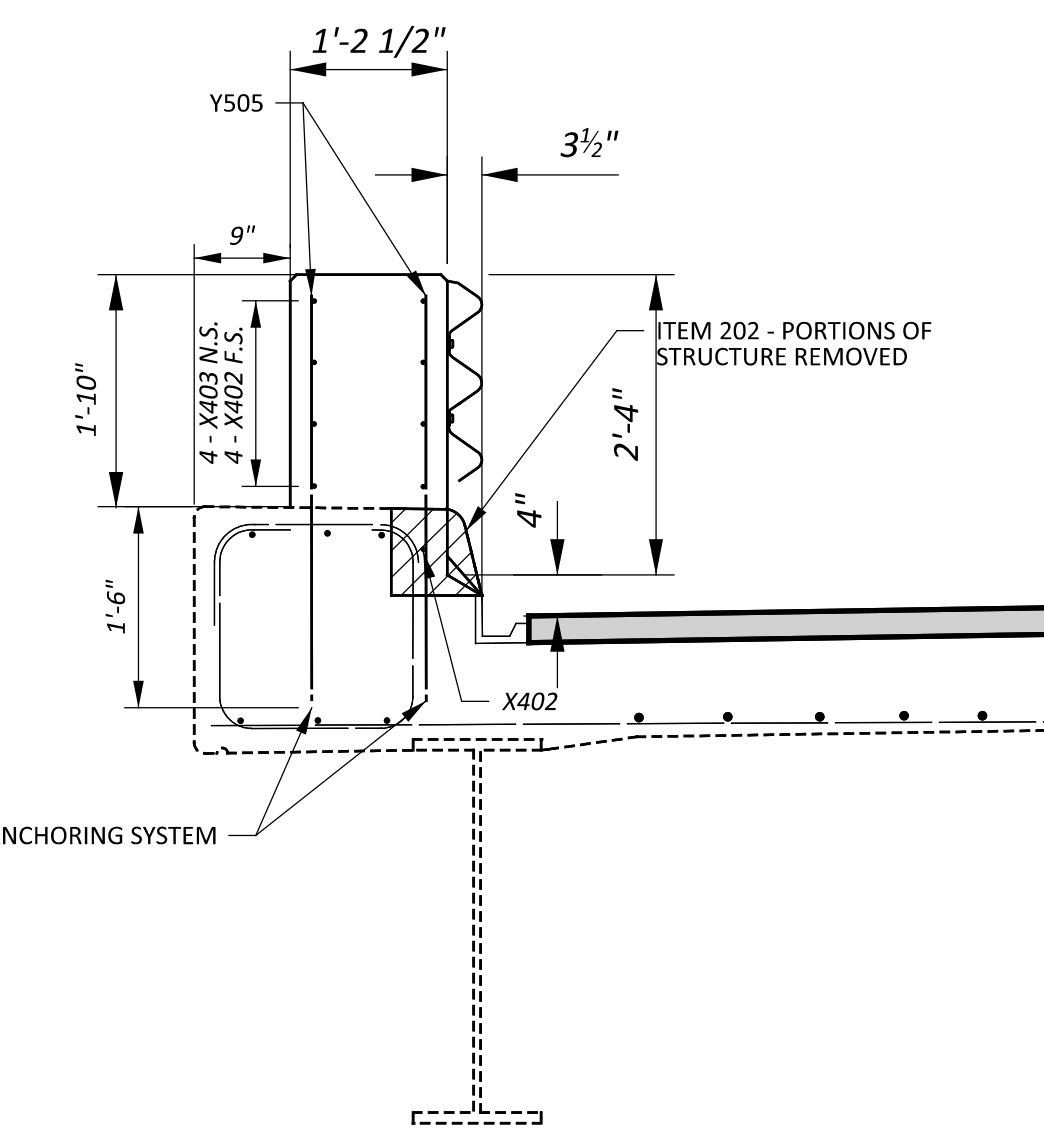
**PLAN VIEW - PROPOSED**  
 (APPLICABLE TO ALL 4 CORNERS OF BRIDGE)



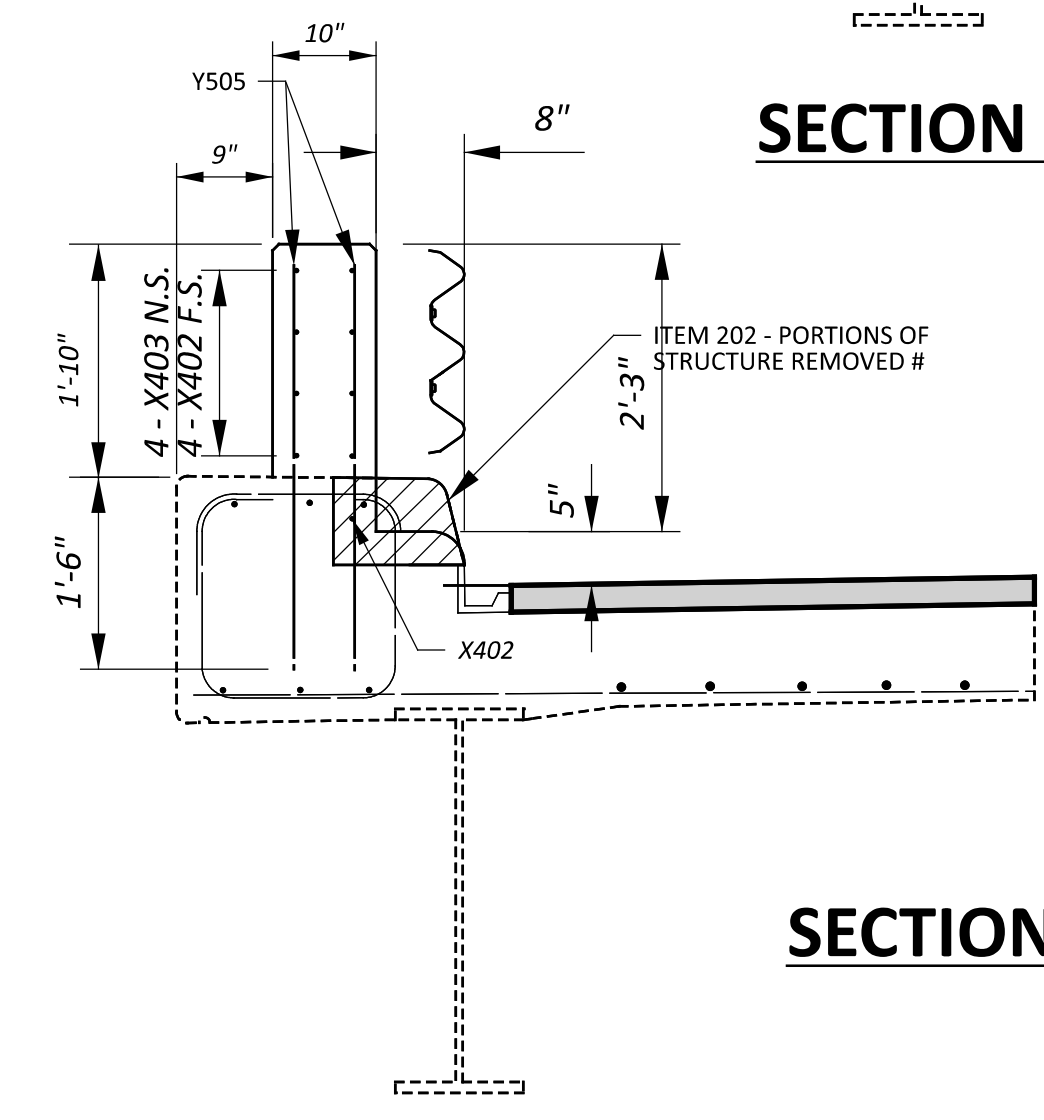
**SECTION A-A**



**SECTION B-B**



**SECTION C-C**



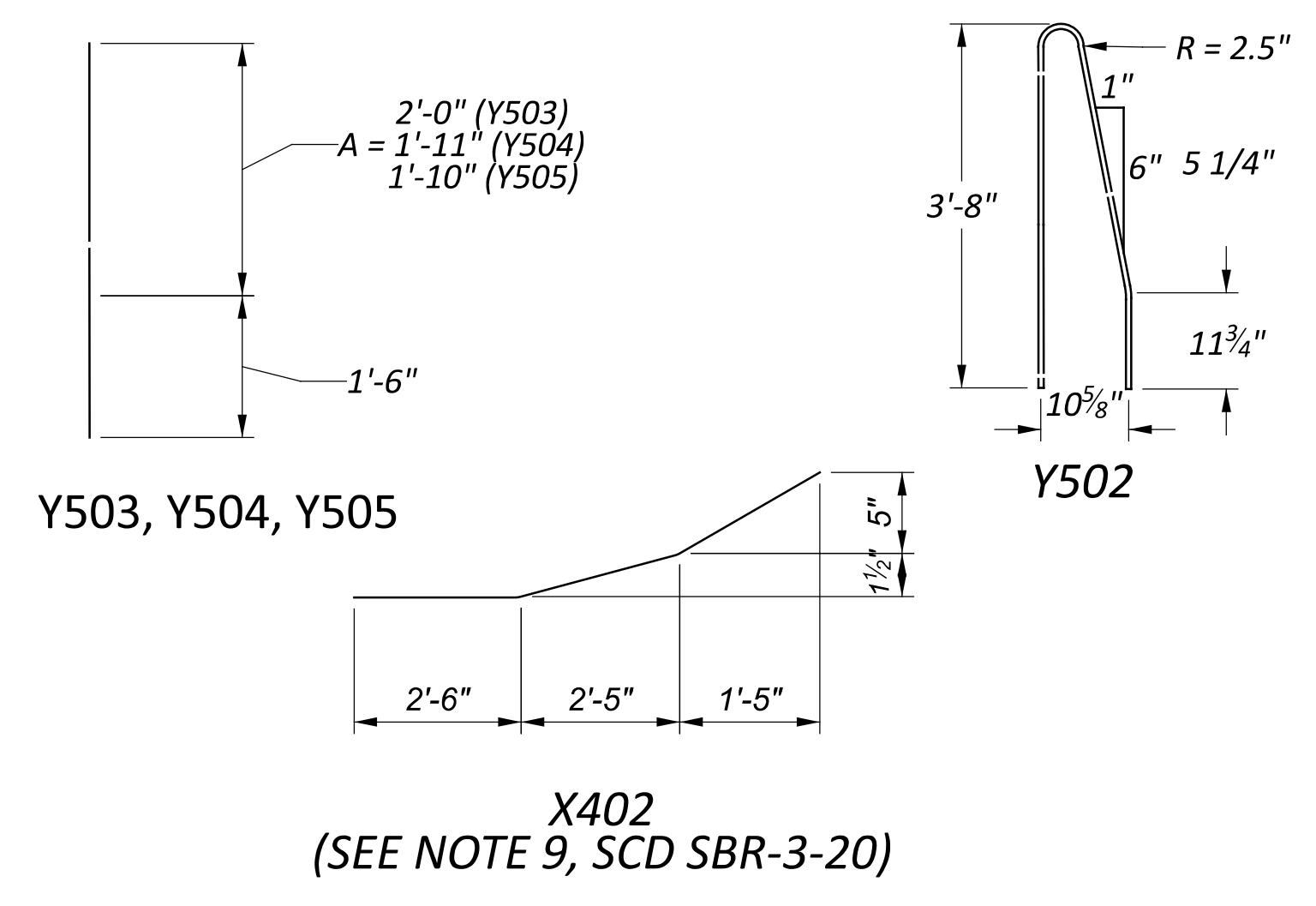
**SECTION D-D**

# - FIELD CUT ANY EXISTING STEEL AS PER THE DIRECTION OF THE PROJECT ENGINEER

**REINFORCEMENT FOR 26" RETROFIT SBR-3 TRANSITION MOUNTED ON STEEL BEAM BRIDGE**

BAR MARK	NUMBER			LENGTH	TYPE	MATERIAL	WEIGHT LB	TOTAL LENGTH FT
	LT	RT	TOTAL					
X401	16	16	32	10'-0"	STR	GFRP		320
X402	8	8	16	6'-4"	BENT	GFRP		102
X403	8	8	16	5'-1"	STR	GFRP		83
X404	54	54	108	31'-0"	STR	GFRP		3348
Y401	60	60	120	10'-0"	STR	GFRP		1200
Y402	8	8	16	12'-6"	STR	GFRP		200
<b>SUPERST. SUBTOTAL CARRIED TO ESTIMATED QUANTITIES</b>								5253
Y502	246	246	492	7'-7"	BENT	STEEL	3378	
Y503	20	20	40	A + 1'-6"	STR	STEEL	146	
Y504	20	20	40	A + 1'-5"	STR	STEEL	143	
Y505	48	48	96	A + 1'-4"	STR	STEEL	334	
<b>SUPERST. SUBTOTAL CARRIED TO ESTIMATED QUANTITIES</b>							4001	

**BENDING DIAGRAMS**



**X402**  
 (SEE NOTE 9, SCD SBR-3-20)