

MATERIAL REQUIRED

ITEM	QTY.	UNITS	DESCRIPTION
625	255	FT	CONDUIT, 2", 725.05
625	220	FT	CONDUIT, 3", 725.04
625	11	FT	CONDUIT, 4", 725.04
625	77	FT	CONDUIT, JACKED OR DRILLED, AS PER PLAN, 2"
625	2	EACH	PULL BOX, 725.08, 18"
625	1	EACH	PULL BOX, 725.08, 24"
625	6	EACH	GROUND ROD, AS PER PLAN
630	3	EACH	SIGN HANGER ASSEMBLY, SPANWIRE
630	15	SF	SIGN, FLAT SHEET, TYPE G
632	11	EACH	VEH. SIGNAL HEAD, (LED), 3-SECT., 12" LENS, 1-WAY, POLYCARB., APP
632	1	EACH	VEH. SIGNAL HEAD, (LED), 5-SECT., 12" LENS, 1-WAY, POLYCARB., APP
632	4	EACH	BREAKAWAY TETHER CONNECTION
632	432	FT	MESSENGER WIRE, 7 STRAND, 1/4" DIA. WITH ACCESSORIES, APP
632	432	FT	MESSENGER WIRE, 7 STRAND, 3/8" DIA. WITH ACCESSORIES
632	600	FT	INTERCONNECT CABLE, 6-PAIR, NO. 19 AWG, SOLID, REA (PE-39)
632	698	FT	SIGNAL CABLE, 5 CONDUCTOR, NO. 14 AWG
632	325	FT	SIGNAL CABLE, 7 CONDUCTOR, NO. 14 AWG
632	4	EACH	STRAIN POLE FOUNDATION, AS PER PLAN
632	73	FT	POWER CABLE, 3 CONDUCTOR, NO. 6 AWG
632	1	EACH	POWER SERVICE, AS PER PLAN
632	4	EACH	STRAIN POLE, TYPE TC-81.10, DESIGN 10, AS PER PLAN
632	1	EACH	SIGNALIZATION, MISC.: METER BASE, 125 AMP WITH BYPASS
632	2	EACH	4' STRAIN POLE EXTENSION W/ 30' LUMINAIRE ARM
632	4	EACH	VIDEO DETECTION CAMERA
632	1	EACH	VIDEO DETECTION SYSTEM HARDWARE
633	1	EACH	CONTROLLER UNIT, TYPE TS2/A2, WITH CABINET, TYPE TSI
633	1	EACH	CONTROLLER, MASTER, TRAFFIC RESPONSIVE
633	2	EACH	CABINET FOUNDATION
633	2	EACH	CONTROLLER WORK PAD, AS PER PLAN
633	1	EACH	UPS 1000W, AS PER PLAN, W/ ENCLOSURE

POLE BASE DIA. = 13"
ATTACH HT = 28.8'

EXISTING P-1
DESIGN 10, 32', W/ 4'
POLE EXT. & 30' ARM
STA 133+58, 69' LT

POLE BASE DIA. = 13"
ATTACH HT = 27.6'

EXISTING P-3
DESIGN 10, 32', W/
VIDEO DET. CAMERA
STA 134+63.5, 81' LT

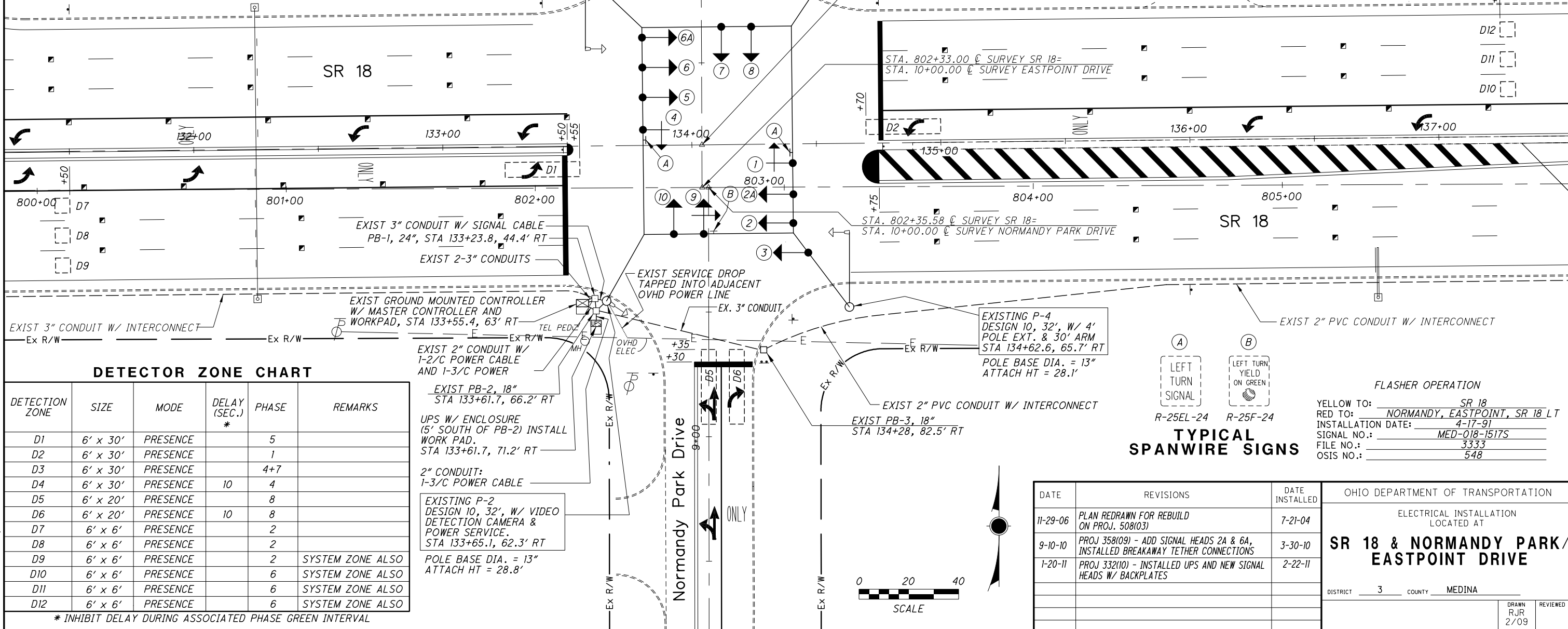
PHASING DIAGRAM

NOTE: OMIT PHASE 7 WHEN PHASE 8 IS ON.

5" BACKPLATE
W/ YELLOW
REFLECTIVE
TAPE BORDER
PER CMS 732.22

TYPICAL SIGNAL HEAD

BLACK POLYCARBONATE W/ 12" LED LAMPS

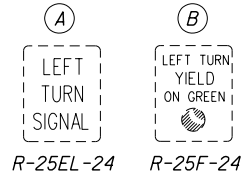


DETECTOR ZONE CHART

DETECTION ZONE	SIZE	MODE	DELAY (SEC.)	PHASE	REMARKS
D1	6' x 30'	PRESENCE	*	5	
D2	6' x 30'	PRESENCE		1	
D3	6' x 30'	PRESENCE		4+7	
D4	6' x 30'	PRESENCE	10	4	
D5	6' x 20'	PRESENCE		8	
D6	6' x 20'	PRESENCE	10	8	
D7	6' x 6'	PRESENCE		2	
D8	6' x 6'	PRESENCE		2	
D9	6' x 6'	PRESENCE		2	SYSTEM ZONE ALSO
D10	6' x 6'	PRESENCE		6	SYSTEM ZONE ALSO
D11	6' x 6'	PRESENCE		6	SYSTEM ZONE ALSO
D12	6' x 6'	PRESENCE		6	SYSTEM ZONE ALSO

* INHIBIT DELAY DURING ASSOCIATED PHASE GREEN INTERVAL

TYPICAL SPANWIRE SIGNS



FLASHER OPERATION

YELLOW TO: SR 18
RED TO: NORMANDY, EASTPOINT, SR 18 LT
INSTALLATION DATE: 4-17-91
SIGNAL NO.: MED-018-1517S
FILE NO.: 3333
OSIS NO.: 548

DATE	REVISIONS	DATE INSTALLED	OHIO DEPARTMENT OF TRANSPORTATION
11-29-06	PLAN REDRAWN FOR REBUILD ON PROJ. 508(03)	7-21-04	ELECTRICAL INSTALLATION LOCATED AT SR 18 & NORMANDY PARK / EASTPOINT DRIVE DISTRICT 3 COUNTY MEDINA
9-10-10	PROJ 358(09) - ADD SIGNAL HEADS 2A & 6A, INSTALLED BREAKAWAY TETHER CONNECTIONS	3-30-10	
1-20-11	PROJ 332(10) - INSTALLED UPS AND NEW SIGNAL HEADS W/ BACKPLATES	2-22-11	

DESIGN FILE: I:\FIELD\VELECTRICAL\SIGNAL\DN\M18&Normandy.dgn
WORKSTATION: rronev DATE: 6/1/2011