



District 3 Capital Programs

Workplan Group

STATE OF OHIO DEPARTMENT OF TRANSPORTATION

HUR-99-15.14
HURON COUNTY

BRIDGE REPAIR
BRIDGEFIELD TOWNSHIP

PROJECT NO.	22	STATE	OHIO	PROJECT	
-------------	----	-------	------	---------	--

HUR-99-15.14
STRUCTURE HUR-99-1604

PLAN NO. BR-27-73

GENERAL SUMMARY

ITEM	PLAN	TOTAL	UNIT	DESCRIPTION
202	Lump		Lump	Portions of structure removed
404	45		Cu. Yd.	Asphalt Concrete (70-85 or AC-201)
Special	3		Cu. Yd.	Sand
407	24		Gal.	Tack
509	13,451			
510	16			
511	71			
Special	242			
513	5,582		Lb.	Structural Steel
514	Lump		Lump	Cleaning and Sand Blasting of Existing Structural Steel
514	5,582		Lb.	Structural Steel
Special	17,358			
516	24			
517	147.22		LIN. FT.	Trailing Edge Sealant with steel tabular back-up, type A or B
601	50			
606	152.70			
Special	32			
606	4			
Special	49.07		Sq. Ft.	Galvanized Steel Drip Strip
617	2		Cu. Yd.	Concrete
808	11		Units	Chemical Adhesive for Concrete
619	Lump			
614	Lump			

1973 SPECIFICATIONS
The standard specifications of the State of Ohio, Department of TRANSPORTATION, including changes and supplemental specifications listed in the proposal shall govern this improvement.
The right of way for this improvement will be provided by the State of Ohio.

I hereby approve these plans and declare that the making of this improvement will REQUIRE THE CLOSING OF THE HIGHWAY TO TRAFFIC AND THAT DETOURS WILL BE PROVIDED BY STATE FORCES.
Date 11-21-73 DISTRICT Deputy Director of TRANSPORTATION

Approved: *R. L. Zook*
Date 1-21-74 Engineer of Maintenance

Approved: *Robert B. Phipps*
Date 1-21-74 Engineer of Bridges

Approved: *William P. Barkley*
Date 1-21-74 Assistant Deputy Director, Operations & Maintenance

Approved: *William W. Baker*
Date 1-22-74 Deputy Director, Division of Highways

Approved: *William P. McKenna*
Date 1-22-74 Assistant Director, DEPARTMENT OF TRANSPORTATION

Approved: *J. Phillip Ridley*
Date 1-22-74 Director, DEPARTMENT OF TRANSPORTATION

FIELD OFFICE: THE CONTRACTOR SHALL PROVIDE A 30-FT. MINIMUM FIELD OFFICE IN ACCORDANCE WITH ITEM 619. THE CONTRACTOR SHALL TELEPHONE INSTALL AND MAINTAIN DURING THE CONSTRUCTION OF THIS PROJECT IN ACCORDANCE WITH ITEM 619. THE CONTRACTOR SHALL PROVIDE SANITARY FACILITIES IN ACCORDANCE WITH 107.06.

REFERENCE: BRIDGE NUMBERED HUR-99-1504 MAY BE INSPECTED AT THE BUREAU OF BRIDGES IN COLUMBUS, OHIO. DRAWINGS DBR-2-71 DATED 4-10-73; TO 59-1-69, SUPPLEMENTAL SPECIFICATIONS 808 AND 836, DATED 6-12-69.

CONVENTIONAL SIGNS

County Line	LA	Limited Access (only)
Township Line	RW	Right of Way (only)
Section Line	LABRW	Limited Access & Right of Way
Corporation Line		Existing Right of Way
Fence Line (existing)		Property Line (an existing fence)
Center Line		Railroad
Trees (to be removed)		Guardrail (existing)
Utility Poles (Telephone, Power, Light)		

INDEX OF SHEETS

TITLE SHEET	1
GENERAL NOTES & GENERAL SUMMARY	2
PLAN & PROFILE	3
ABUTMENT DETAILS	4
SUPERSTRUCTURE DETAILS	5
SUPERSTRUCTURE & PIER DETAILS	6

CLEANING AND PAINTING
ALL SURFACES TO BE PAINTED TO BARE METAL. ALL STEEL SHALL BE PRINTED WITH THE OIL-BASED PRIMER WHICH COME INTO CONTACT WITH NEW STEEL PLATES OR CONCRETE SURFACES SHALL BE PAINTED TO A DEPTH OF SIX (6) INCHES. ALL SUPERSTRUCTURE DETAILS OLD DECK HAS BEEN REMOVED AND BEFORE ANY WORK IS STARTED ON THE SURFACES OF A BRIDGE PAINT IMMEDIATELY AFTER CLEANING AND PREPARATION. CONSTRUCTORS SHALL APPLY TWO COATS OF PRIMER TO THE NEW DECK SHALL BE SLIGHTLY CLEANED AND SPRAYED WITH TWO COATS OF PRIMER BEFORE FINAL PAINTING.

BEARING DEVICES
BEARINGS SHALL CONSIST OF TWO PLATES. THE UPPER PLATE SHALL BE A 1/2" STEEL PLATE, WELDED TO BEAMS BEFORE THE BEAMS ARE SET. THE MIDDLE PLATE SHALL BE A STEEL SHIM, THE THICKNESS INDICATED BY THE DRAWING. THE BOTTOM PLATE SHALL BE 1/8" LEAD PLATE. BASIS OF PAYMENT SHALL BE AT THE CONTRACT PRICE BID FOR ITEM 516, EACH BEARING DEVICES, WHICH SHALL INCLUDE ALL NECESSARY MATERIALS, TOOLS, LABOR AND INCIDENTALS TO COMPLETE THE ITEM.

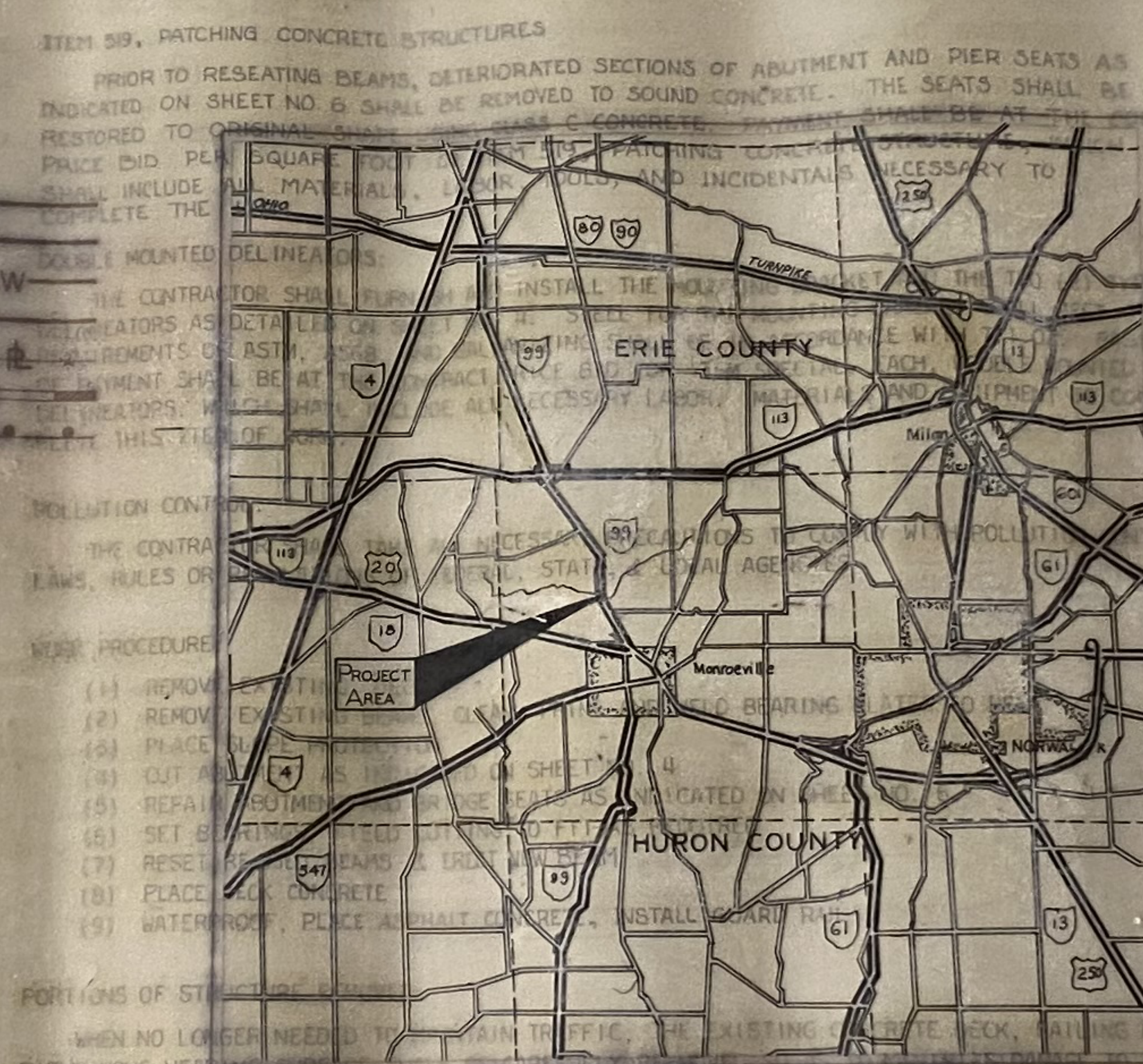
CONTRACTED AGGREGATE, AS PER PLAN
THE FOLLOWING QUANTITIES OF MATERIALS TO BE USED AT LOCATIONS AS DIRECTED BY THE ENGINEER. WHERE NECESSARY, THE EXISTING SHOULDER GRADE ADJACENT TO THE SIDE OF THE ASPHALT PAVEMENT SHALL BE REPAIRED. ALL NECESSARY WATER REQUIRED TO AID COMPACTION SHALL BE INCLUDED IN THE UNIT PRICE. UNIT PRICE SHALL BE PER 100 SQ. YARD, COMPACTED AGGREGATE AS PER PLAN. ESTIMATED QUANTITY IN CUBIC YARDS.

TACKING
A TACKING SHALL BE APPLIED TO ALL EXISTING PAVEMENT AND BEAM AREAS BEING COATED WITH CHEMICAL CONCRETE ADHESIVE. THE TACKING SHALL BE APPLIED AT THE RATE SET BY THE ENGINEER. CONFERENCE ON THE DATE OF THE TACKING APPLICATION. EXCEED 10 GALLON PER SQUARE YARD.

BEGIN WORK STA. 843+00
END WORK STA. 851+50
NET LENGTH OF WORK 850 LIN. FT.

GALVANIZED STEEL DRIP STRIP:
PRIOR TO PLACING OF THE CONCRETE, GALVANIZED STEEL DRIP STRIP SHALL BE INSTALLED ALONG THE ENTIRE LENGTH OF THE DECK. THE STRIP SHALL BE AT LEAST 1/2" ABOVE THE DECK SURFACE. THE STRIP SHALL BE GALVANIZED STEEL DRIP STRIP, SQUARE FOOT, GALVANIZED STEEL DRIP STRIP, WHICH SHALL INCLUDE ALL MATERIALS, LABOR, TOOLS AND INCIDENTALS NECESSARY TO COMPLETE THE ITEM.

ITEM 519, PATCHING CONCRETE STRUCTURES
PRIOR TO RESEATING BEAMS, DETERIORATED SECTIONS OF ABUTMENT AND PIER SEATS AS INDICATED ON SHEET NO. 6 SHALL BE REMOVED TO SOUND CONCRETE. THE SEATS SHALL BE RESTORED TO ORIGINAL CROSS SECTION. CONCRETE SHALL BE PLACED IN PLACE AND FINISHED TO ORIGINAL FINISH. ALL MATERIALS AND INCIDENTALS NECESSARY TO COMPLETE THE ITEM SHALL BE INCLUDED IN THE UNIT PRICE.



STRUCTURAL STEEL
THIS ITEM INCLUDES THE REMOVAL OF EXISTING BEAMS AND BEARING PLATES, AND THE RESETTING OF EXISTING BEAMS TO THEIR ORIGINAL LOCATION. BASIS OF PAYMENT FOR THIS ITEM OF WORK SHALL BE AT THE CONTRACT PRICE.

SCALES
Profile Horizontal
Plan Vertical

PORTION TO BE IMPROVED
State Roads
Other Roads

REMOVING AND RESETTING EXISTING STRUCTURAL STEEL
THIS ITEM INCLUDES THE REMOVAL OF EXISTING BEAMS AND BEARING PLATES, AND THE RESETTING OF EXISTING BEAMS TO THEIR ORIGINAL LOCATION. BASIS OF PAYMENT FOR THIS ITEM OF WORK SHALL BE AT THE CONTRACT PRICE.

EXISTING CROSSING
At the Contractor's option, existing 3x3x2 crossframe angles may be reworked and re-used. If they are replaced, they will be paid for as new Structural Steel, Item 515.

SUPPLEMENTAL PRINTS OF STANDARD CONSTRUCTION DRAWINGS

GR-2B	11-9-71			
MC-3	6-1-73			
DBR-2-73	4-10-73			
SD-1-69	6-12-69			
BP-5	6-1-72			

SUPPLEMENTAL SPECIFICATIONS

808	1-1-71
836	1-1-71

DEPARTMENT OF TRANSPORTATION
FEDERAL HIGHWAY ADMINISTRATION
BUREAU OF PUBLIC ROADS

APPROVED:

DIVISION ENGINEER _____ DATE _____

GENERAL NOTES

FIELD OFFICE:

THE CONTRACTOR SHALL PROVIDE A 150 SQ. FT. MINIMUM FIELD OFFICE IN ACCORDANCE WITH ITEM 619. THE CONTRACTOR SHALL HAVE A TELEPHONE INSTALLED AND MAINTAINED DURING THE CONSTRUCTION OF THIS PROJECT. IN ADDITION TO THE REQUIREMENTS OF ITEM 619, THE CONTRACTOR SHALL PROVIDE SANITARY PROVISIONS IN ACCORDANCE WITH 107.06.

REFERENCE:

DETAILED DRAWINGS OF THE EXISTING BRIDGE NUMBERED HUR-99-1604 MAY BE INSPECTED AT THE DISTRICT OFFICE, ASHLAND, OHIO OR IN THE BUREAU OF BRIDGES IN COLUMBUS, OHIO. REFERENCE SHALL BE MADE TO STANDARD DRAWINGS OBR-2-73, DATED 4-10-73; TO SD-1-69, DATED 6-12-69; AND TO SUPPLEMENTAL SPECIFICATIONS 808 AND 836, DATED 1-1-71.

DIMENSIONS:

THE CONTRACTOR SHALL VERIFY ALL DIMENSIONS OF THE EXISTING STRUCTURE IN THE FIELD BEFORE ORDERING STRUCTURAL STEEL, ETC., REQUIRED FOR CONSTRUCTION.

DESIGN SPECIFICATIONS:

THE STRUCTURE SHALL CONFORM TO STANDARD SPECIFICATIONS FOR HIGHWAY BRIDGES ADOPTED BY THE AMERICAN ASSOCIATION OF STATE HIGHWAY OFFICIALS 1973 AND INCLUDING THE OHIO "SUPPLEMENT" TO THESE SPECIFICATIONS.

DESIGN DATA:

DESIGN LOADING HS-18
 CONCRETE CLASS C, UNIT STRESS - 1200 P.S.I. FOR SUPERSTRUCTURE
 REINFORCING STEEL ASTM A615, A616 OR A617, UNIT STRESS - 20,000 P.S.I.
 NEW STRUCTURAL STEEL ASTM A36, UNIT STRESS - 20,000 P.S.I.
 EXISTING STRUCTURAL STEEL UNIT STRESS - 18,000 P.S.I.

CLEANING AND PAINTING OF EXISTING STRUCTURAL STEEL:

ALL SALVAGED STEEL SHALL BE SAND BLASTED TO BARE METAL. ALL STEEL SHALL BE PAINTED WITH THE EXCEPTION OF THOSE SURFACES WHICH COME INTO CONTACT WITH NEW STEEL PLATES OR CONCRETE DECK. STEEL ENTERING INTO ABUTMENTS SHALL BE PAINTED TO A DEPTH OF SIX (6) INCHES. ALL STEEL SHALL BE PAINTED AFTER THE OLD DECK HAS BEEN REMOVED AND BEFORE ANY WORK IS STARTED ON THE NEW DECK WITH TWO COATS OF A PRIME PAINT IMMEDIATELY AFTER CLEANING. ANY SCRAPES, SCUFFS, ETC., OCCURRING DURING CONSTRUCTION OF THE NEW DECK SHALL BE SUITABLY CLEANED AND SPOT PRIMED WITH TWO COATS OF PRIMER BEFORE FINAL PAINTING.

BEARING DEVICES:

BEARINGS SHALL CONSIST OF THREE PLATES. THE UPPERMOST SHALL BE A 1/2" STEEL PLATE, WELDED TO BEAMS BEFORE THE BEAMS ARE RESET; THE MIDDLE PLATE SHALL BE A STEEL SHIM, THE THICKNESS INDICATED BY THE DRAWINGS; THE BOTTOMMOST PLATE SHALL BE 1/8" LEAD PLATE. BASIS OF PAYMENT SHALL BE AT THE CONTRACT PRICE BID FOR ITEM 516, EACH, BEARING DEVICES, WHICH SHALL INCLUDE ALL NECESSARY MATERIALS, TOOLS, LABOR AND INCIDENTALS TO COMPLETE THE ITEM.

COMPACTED AGGREGATE, AS PER PLAN:

THE FOLLOWING QUANTITY IS PROVIDED IN THE GENERAL SUMMARY TO BE USED AT LOCATIONS AS DIRECTED BY THE ENGINEER TO ADJUST, WHERE NECESSARY, THE EXISTING SHOULDER GRADE ADJACENT TO THE EDGE OF THE ASPHALT PAVEMENT. ALL NECESSARY WATER REQUIRED TO AID COMPACTION SHALL BE INCLUDED IN THE UNIT PRICE BID FOR ITEM 617, UNIT CUBIC YARD, COMPACTED AGGREGATE, AS PER PLAN. ESTIMATED QUANTITY, 2 CUBIC YARDS.

TACK COAT:

A TACK COAT SHALL BE APPLIED TO ALL EXISTING PAVEMENT AND BERM AREAS BEING COVERED WITH ASPHALT CONCRETE AND TO THE BRIDGE DECK. THE TACK COAT SHALL BE APPLIED AT THE RATE DETERMINED AT THE PRE-CONSTRUCTION CONFERENCE ON THE PROJECT PRIOR TO THE START OF WORK. IN NO CASE SHALL THE RATE OF APPLICATION EXCEED 0.10 GALLON PER SQUARE YARD.

GALVANIZED STEEL DRIP STRIP:

PRIOR TO PLACING OF THE SAND ASPHALT CONCRETE, THE BENT GALVANIZED STEEL DRIP STRIP SHALL BE INSTALLED ALONG THE LOWER EDGE OF THE DECK AS SHOWN ON THE DETAIL ON SHEET NO. 4. THE STRIP SHALL RUN THE FULL LENGTH OF THE DECK, EXCEPT THAT SHORTER LENGTHS MAY BE USED WITH A MINIMUM LAP OF THREE (3) INCHES. STEEL SHALL MEET THE REQUIREMENTS OF ASTM, A568, AND GALVANIZING SHALL BE IN ACCORDANCE WITH 711.02. PAYMENT SHALL BE AT THE CONTRACT PRICE BID FOR ITEM SPECIAL, SQUARE FOOT, GALVANIZED STEEL DRIP STRIP, WHICH SHALL INCLUDE ALL MATERIALS, LABOR, TOOLS AND INCIDENTALS NECESSARY TO COMPLETE THE ITEM.

ITEM 519, PATCHING CONCRETE STRUCTURES

PRIOR TO RESEATING BEAMS, DETERIORATED SECTIONS OF ABUTMENT AND PIER SEATS AS INDICATED ON SHEET NO. 6 SHALL BE REMOVED TO SOUND CONCRETE. THE SEATS SHALL BE RESTORED TO ORIGINAL SHAPE USING CLASS C CONCRETE. PAYMENT SHALL BE AT THE CONTRACT PRICE BID PER SQUARE FOOT OF ITEM 519, PATCHING CONCRETE STRUCTURE, WHICH SHALL INCLUDE ALL MATERIALS, LABOR, TOOLS, AND INCIDENTALS NECESSARY TO COMPLETE THE ITEM.

DOUBLE MOUNTED DELINEATORS:

THE CONTRACTOR SHALL FURNISH AND INSTALL THE MOUNTING BRACKET AND THE TWO (2) TYPE A DELINEATORS AS DETAILED ON SHEET NO. 4. STEEL FOR THE MOUNTING BRACKET SHALL MEET THE REQUIREMENTS OF ASTM, A568, AND GALVANIZING SHALL BE IN ACCORDANCE WITH 711.02. BASIS OF PAYMENT SHALL BE AT THE CONTRACT PRICE BID FOR ITEM SPECIAL, EACH, DOUBLE MOUNTED DELINEATORS, WHICH SHALL INCLUDE ALL NECESSARY LABOR, MATERIALS AND EQUIPMENT TO COMPLETE THIS ITEM OF WORK.

POLLUTION CONTROL:

THE CONTRACTOR SHALL TAKE ALL NECESSARY PRECAUTIONS TO COMPLY WITH POLLUTION CONTROL LAWS, RULES OR REGULATIONS OF FEDERAL, STATE, & LOCAL AGENCIES.

WORK PROCEDURE:

- (1) REMOVE EXISTING DECK
- (2) REMOVE EXISTING BEAMS, CLEAN, PRIME AND WELD BEARING PLATES TO BEAM
- (3) PLACE SLOPE PROTECTION
- (4) CUT ABUTMENT AS INDICATED ON SHEET NO. 4
- (5) REPAIR ABUTMENT AND BRIDGE SEATS AS INDICATED ON SHEET NO. 6.
- (6) SET BEARINGS, FIELD CUTTING TO FIT AS REQUIRED
- (7) RESET RE-USED BEAMS & ERECT NEW BEAM
- (8) PLACE DECK CONCRETE
- (9) WATERPROOF, PLACE ASPHALT CONCRETE, INSTALL GUARD RAIL

PORTIONS OF STRUCTURE REMOVED:

WHEN NO LONGER NEEDED TO MAINTAIN TRAFFIC, THE EXISTING CONCRETE DECK, RAILING AND BITUMINOUS WEARING SURFACE SHALL BE CAREFULLY RE-MOVED SO AS TO MINIMIZE DAMAGE TO THE EXISTING STRUCTURAL STEEL WHICH IS TO BE RE-USED. ANY DAMAGE TO THE EXISTING STRUCTURAL STEEL BEAMS MUST BE REPAIRED BY THE CONTRACTOR, AND AT HIS OWN EXPENSE, TO THE SATISFACTION OF THE ENGINEER. BASIS OF PAYMENT FOR THIS ITEM OF WORK SHALL BE AT THE CONTRACT LUMP SUM PRICE.

STRUCTURAL STEEL:

THIS ITEM INCLUDES THE NEW BEAM, NEW X-BRACING, AND ALL NECESSARY LABOR, MATERIALS AND EQUIPMENT TO JOIN THE NEW X-BRACING TO THE RESET EXISTING BEAMS, & TO THE NEW BEAM.

REMOVING AND RESETTING EXISTING STRUCTURAL STEEL:

THIS ITEM INCLUDES THE REMOVAL OF EXISTING X-BRACING AND BEARING PLATES, AND THE RESETTING OF EXISTING BEAMS TO PLAN LOCATION. BASIS OF PAYMENT FOR THIS ITEM OF WORK SHALL BE AT THE CONTRACT LUMP SUM PRICE.

EXISTING CROSS FRAME ANGLES

At the Contractor's option the existing 3 x 3 x 3/8" crossframe angles may be reworked and re-used. If they are re-used they will be paid for as new Structural Steel, Item 513.

GENERAL SUMMARY

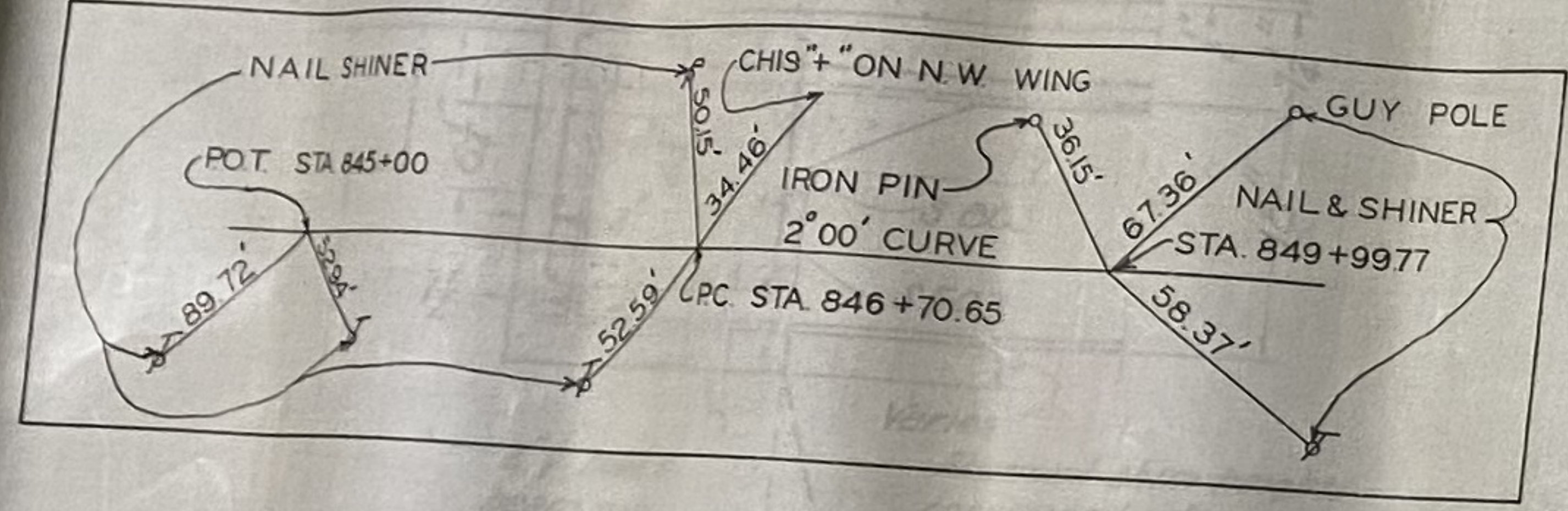
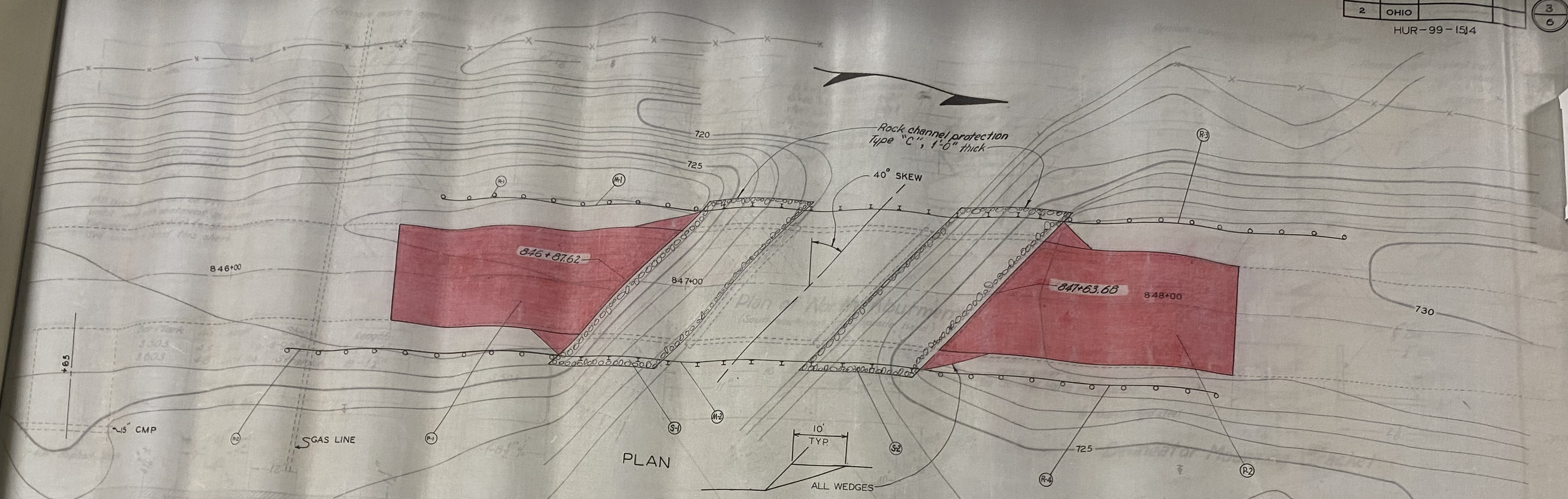
ITEM	PLAN TOTAL	UNIT	DESCRIPTION
202	Lump	Lump	Portions of structure removed
404	45	Cu. Yd.	Asphalt Concrete (70-85 or AC-20)
Special	3	Cu. Yd.	Sand, Asphalt
407	24	Gal.	Tack Coat (MS-2, RS-1, SS-1, SS-1H, or AC-250)
509	13,451	Lbs.	Reinforcing Steel
519	18	Sq. Ft.	Patching Concrete Structures
511	71	Cu. Yd.	Class C Concrete - Superstructure
Special	242	Sq. Yd.	Membrane Waterproofing (Liquid Type)
513	5,582	Lb.	Structural Steel
514	Lump	Lump	Cleaning and Field Painting of Existing Structural Steel
514	5,582	Lb.	Field Painting of Structural Steel
Special	17,358	Lb.	Removing & Resetting Existing Structural Steel
516	24	Each	Bearing Devices
517	147.22	Lin. Ft.	Railing (Deep Beam Rail with steel tubular back-up, Type 2 posts and type A anchors)
601	50	Cu. Yd.	Dumped Rock Fill, Type C, 12" Thick
606	152.78	Lin. Ft.	Guard Rail, Type 5
Special	32	Each	Double Mounted Delineator
606	4	Each	Anchor Assembly
Special	49.07	Sq. Ft.	Galvanized Steel Drip Strip
617	2	Cu. Yd.	Compacted Aggregate, As per plan
808	71	Units	Chemical admixture for Concrete, Type A, B, or D
619	Lump	Lump	Field Office
614	Lump	Lump	Maintaining Traffic

Workplan Group

FED. RD. DIVISION	STATE	PROJECT
2	OHIO	

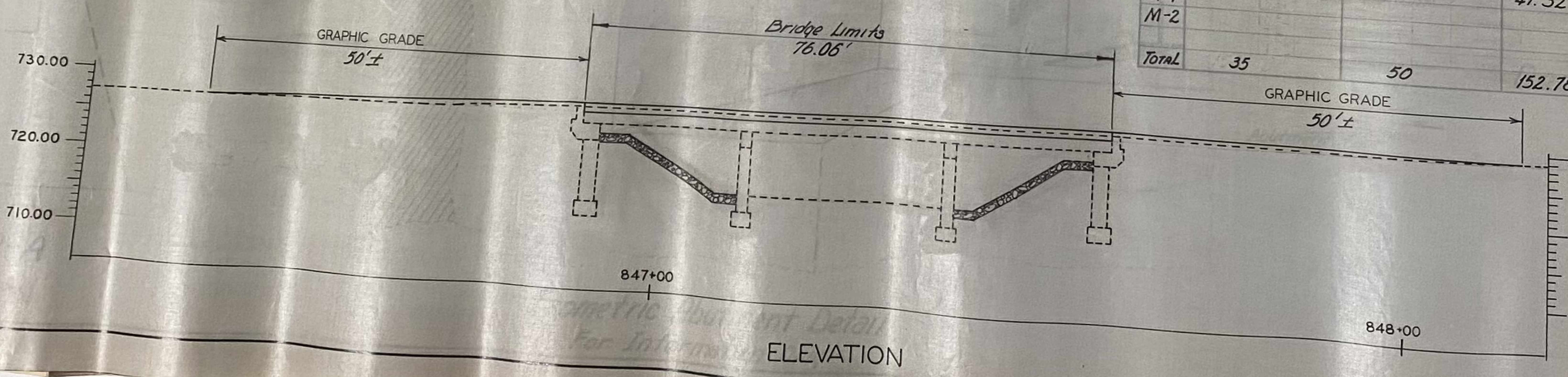
HUR-99-1514

3
6



CURVE DATA
 P.I. STA. 848+80.28
 $\Delta = 8^\circ 22' 13''$ RT.
 $D = 2^\circ 00'$
 $L = 418.51'$
 $T = 209.63'$
 $E = 763'$
 $R = 2864.93'$

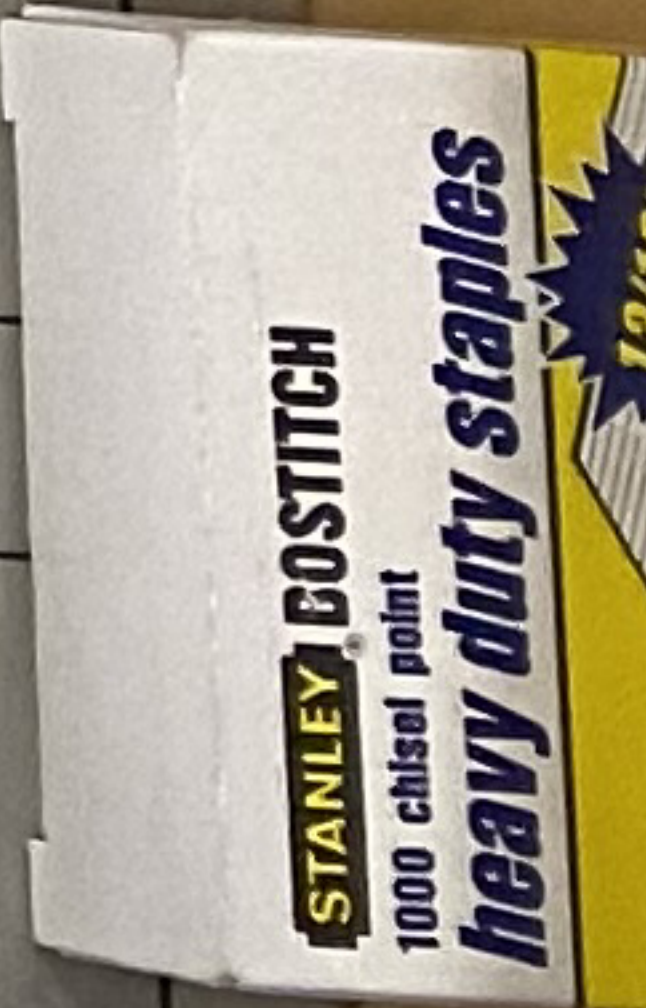
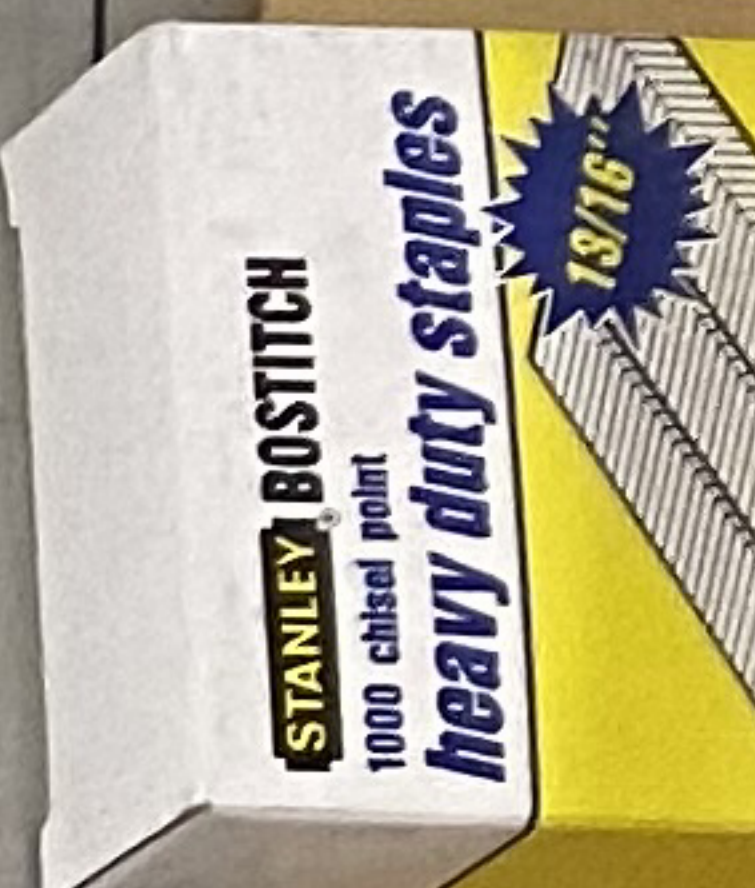
	404 Asphalt Concrete (70-85 or AC-20) Cu. Yds.	601 Slope Protection Type (C) Cu. Yds.	606 Guardrail Type (5) Ft.	Special Double Mounted Delineator Each	606 Anchor Assembly Each
P-1	17.5				
P-2	17.5				
S-1					
S-2		25			
R-1		25			
R-2			35.07		
R-3			35.07		1
R-4			41.32		1
M-1			41.32		1
M-2				16	1
Total	35	50	152.78	32	4

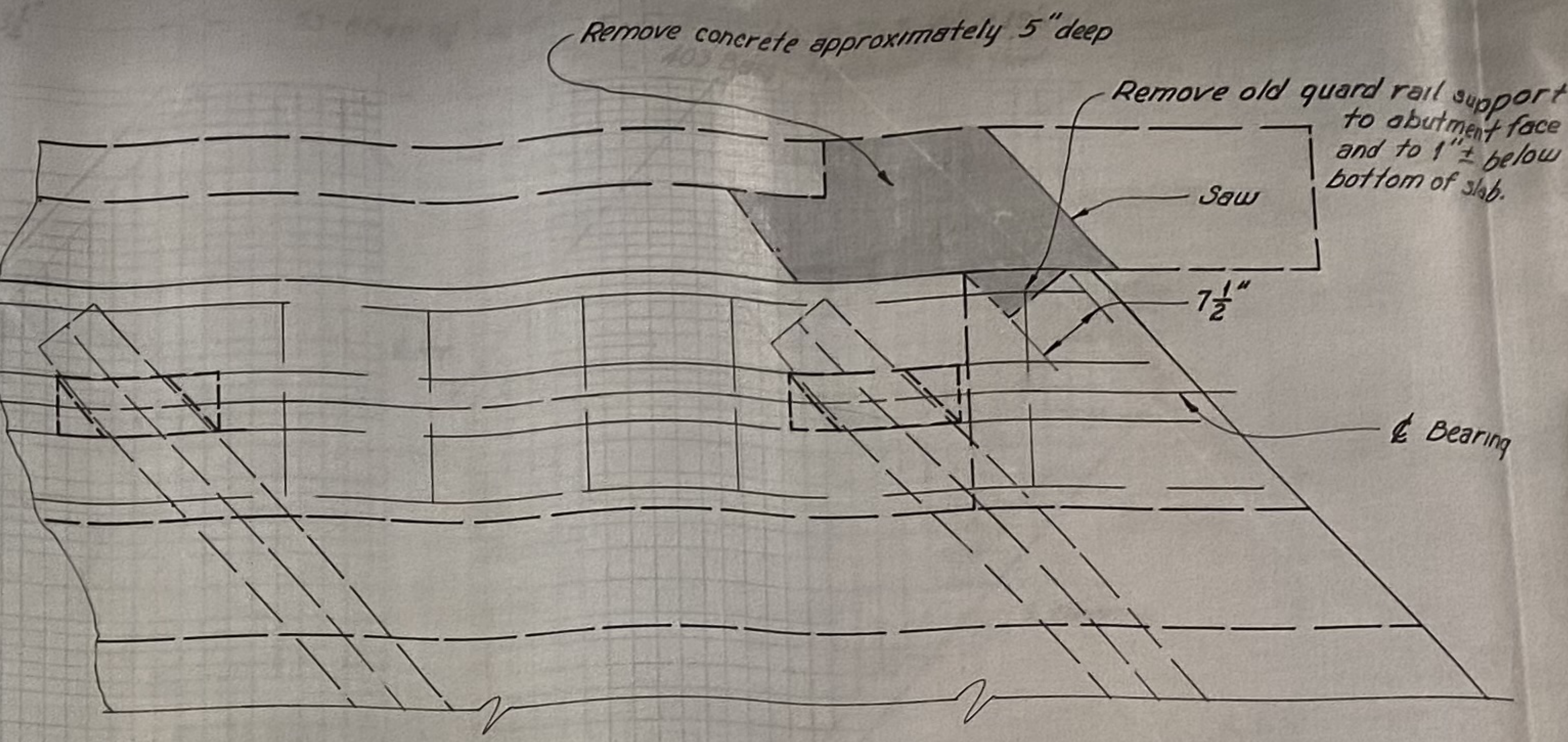
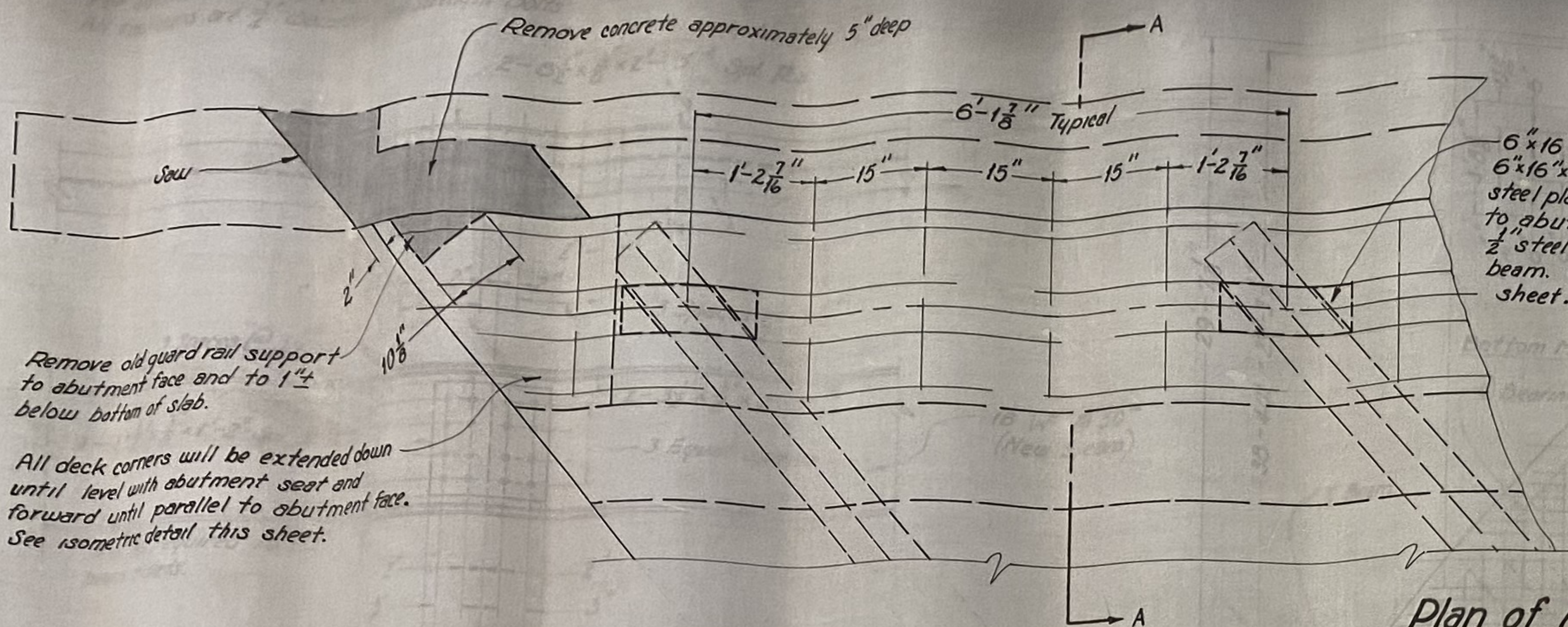


OHIO DEPARTMENT OF TRANSPORTATION
 DIVISION OF HIGHWAYS
 PLAN & PROFILE
 BRIDGE NO. HUR-99-1604
 OVER SEYMOUR CREEK
 STA. 847+30.65

DESIGNED J.J.C.	DRAWN J.J.C.	TRACED J.J.C.	CHECKED J.E.G.	REVIEWED	DATE
--------------------	-----------------	------------------	-------------------	----------	------

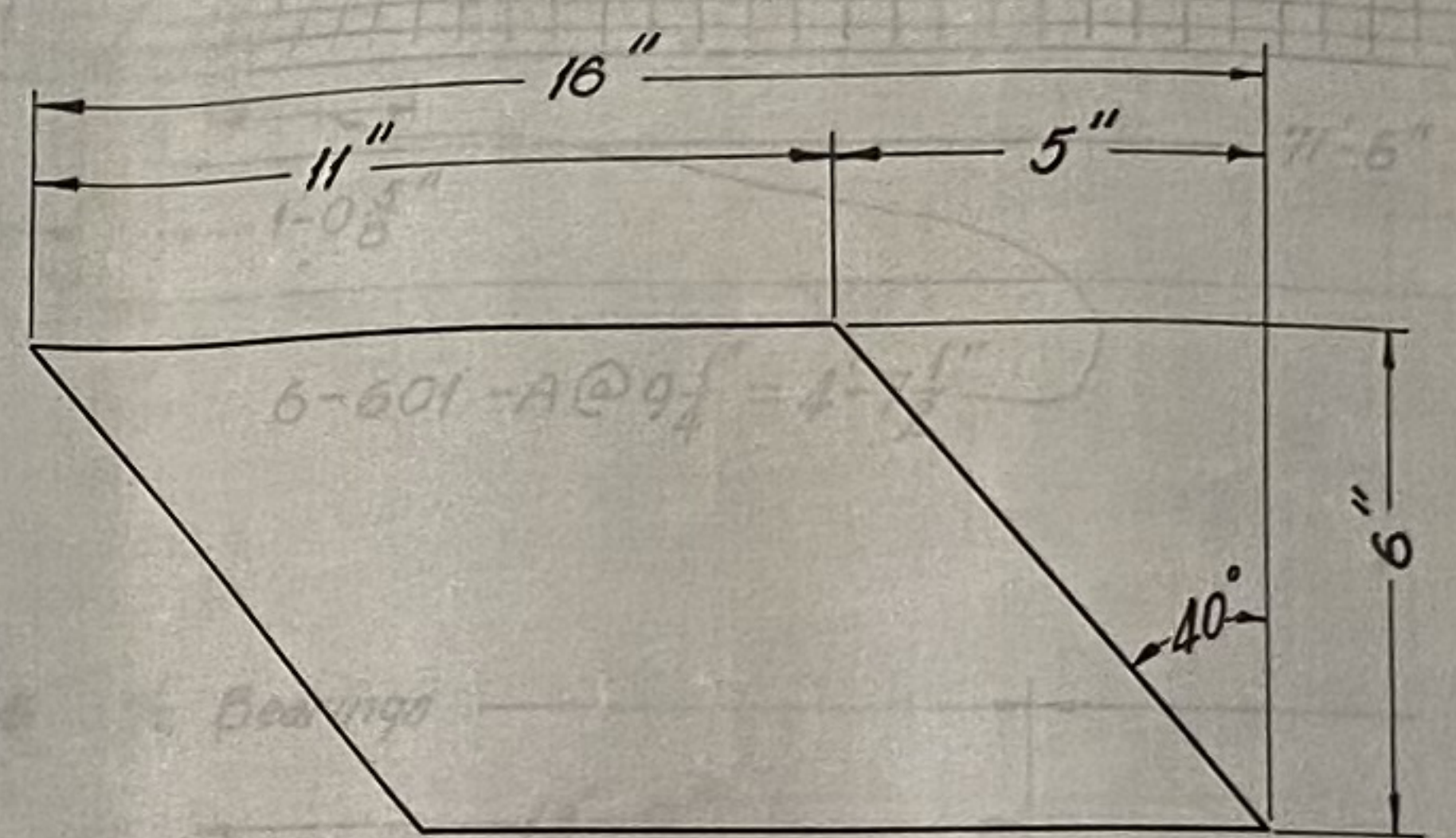
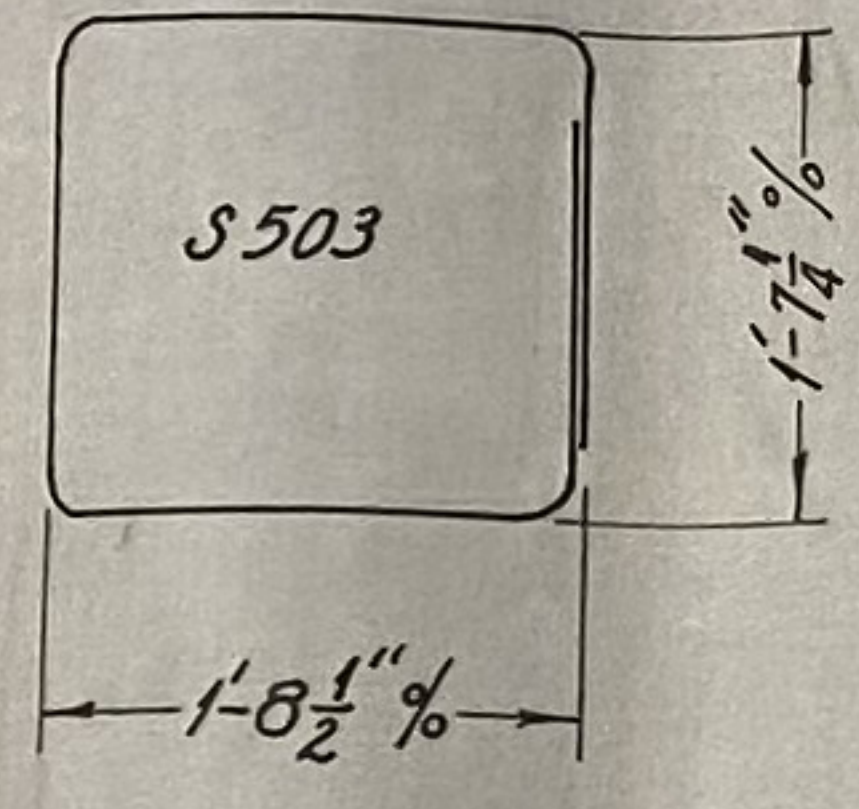
PLAN AND PROFILE





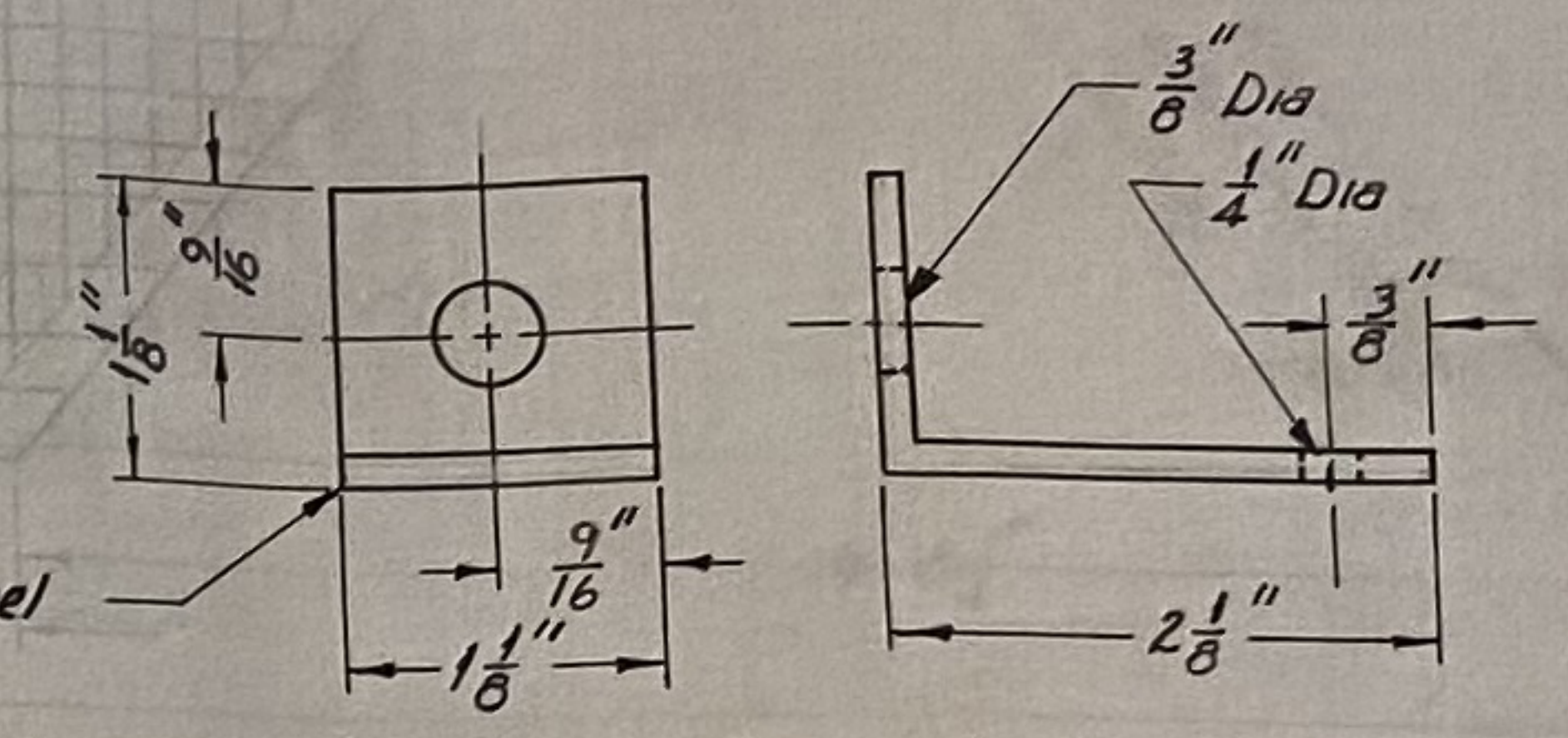
Plan of North Abutment
(South abutment - Opposite hand)

Bar Mark	No.	Weight	Shape	Length
S 503	44	372 lbs.	4-90° Bents	8'-1 1/2"
S 803	48	2454 lbs.	Straight	19'-1 3/4"
TOTAL		2826 lbs.		

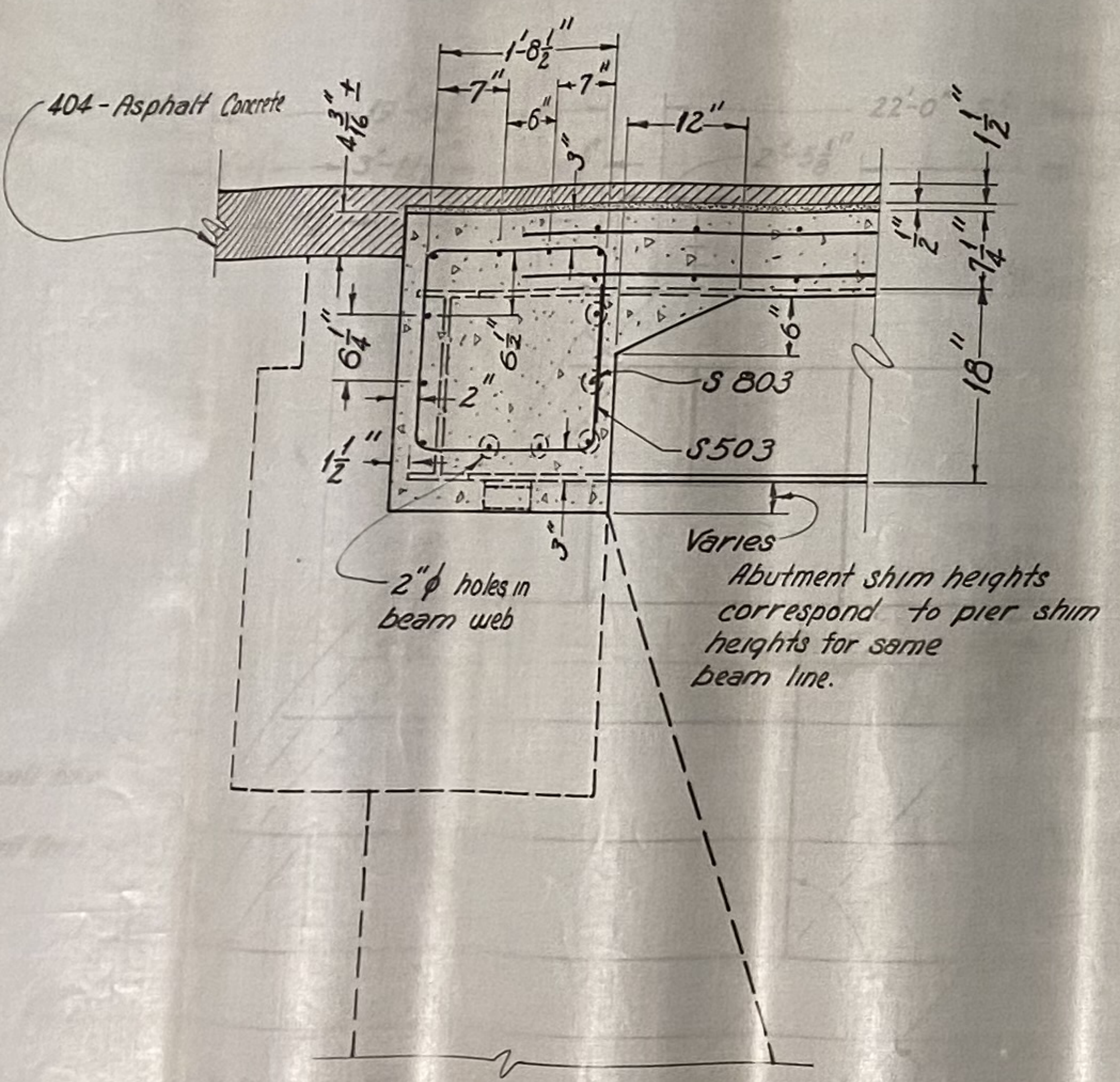


1/2" Steel Plate Detail
(Abutments Only)

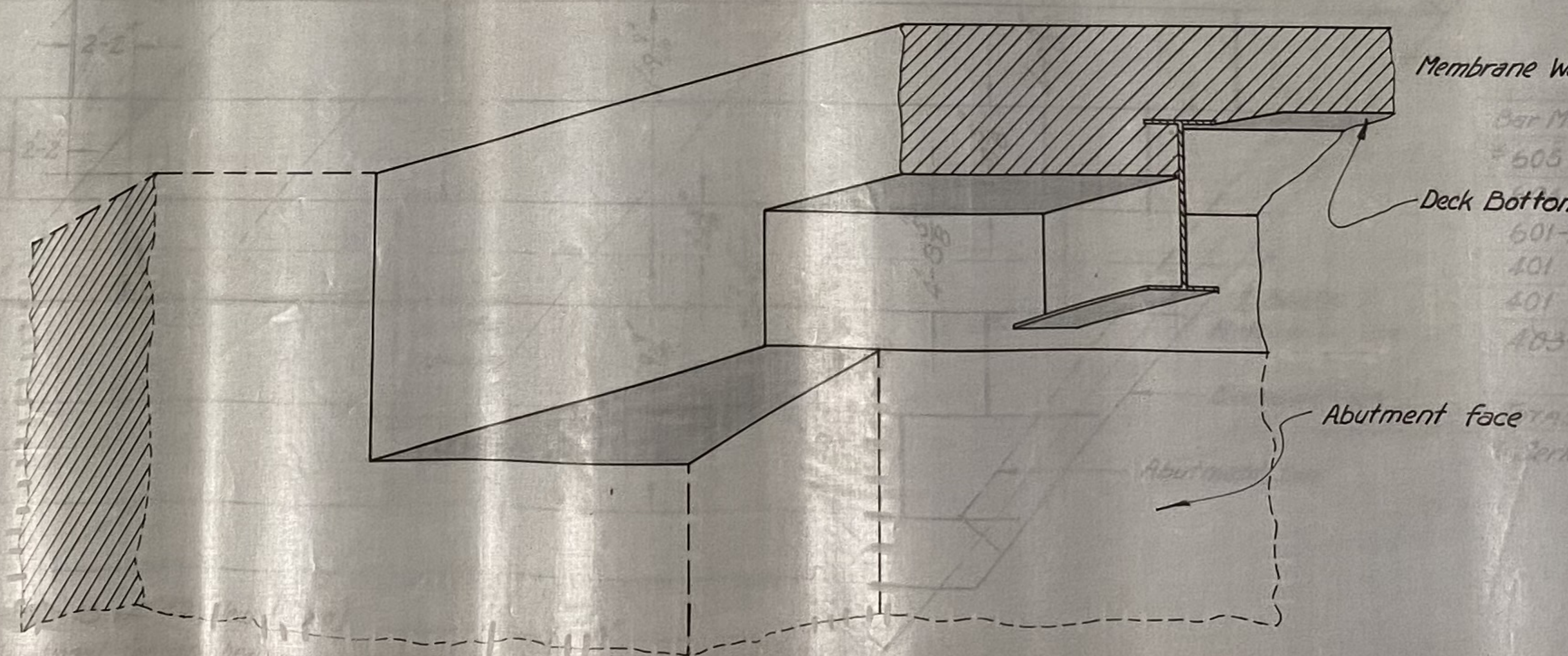
2 type A delineators shall be mounted back/back & placed at every other guard rail post. See General Notes for quantity.



Delineator Mounting Bracket

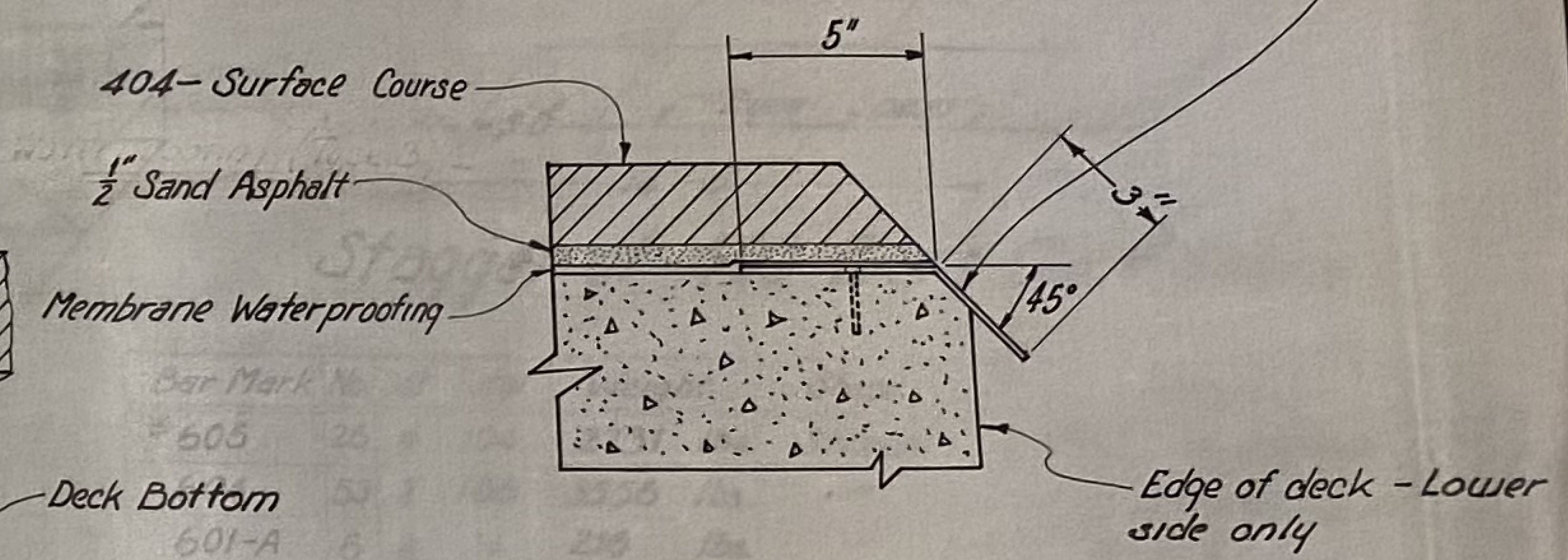


Section A-A



Isometric Abutment Detail
For Information Only

8" x 0.1046" galvanized steel drip strip. Fasten at 3'-0" c/c maximum with power driven pins or #10 galvanized expansion screws, subject to approval by the Engineer. See Gen. Notes.



Drip Strip Detail

Ohio Department of Transportation
Division of Highways
Abutment Details
Bridge No. Hur-099-1604
Over Seymour Creek
Sta. 847+30.65

Designed	Drawn	Traced	Checked	Reviewed	Date
F.C.C.	E.L.L.	E.L.L.			

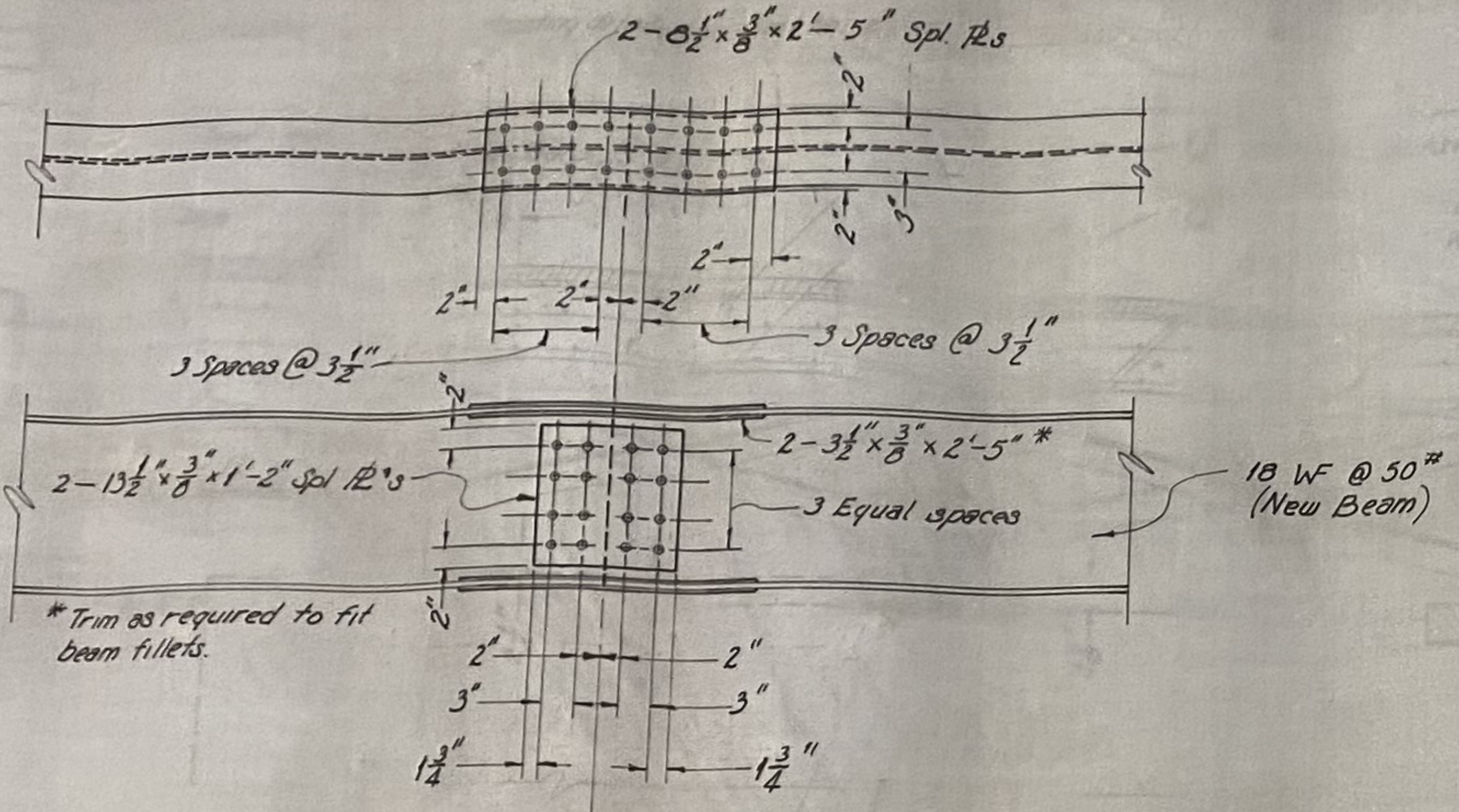
ABUTMENT DETAILS

Workplan Group

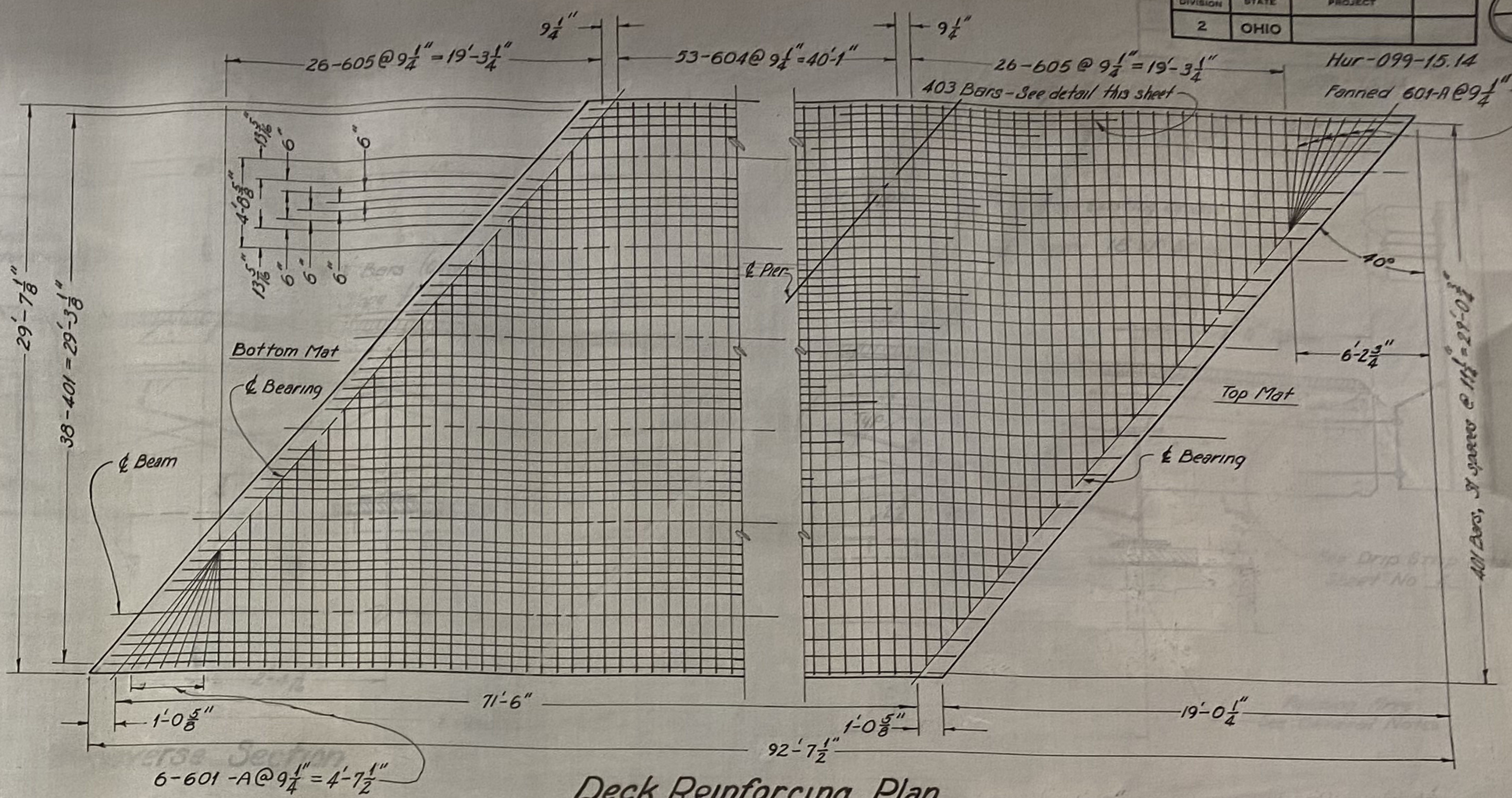
FED. RD. DIVISION	STATE	PROJECT
2	OHIO	

5
6

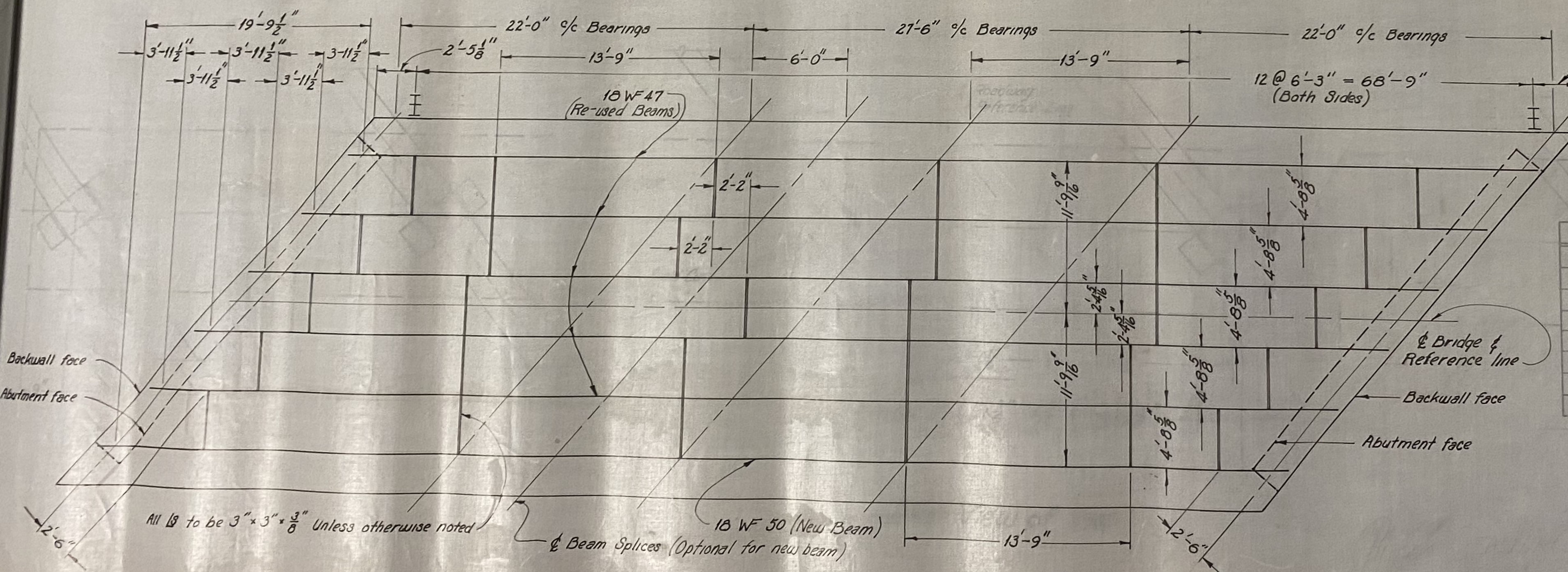
NOTE:
For additional details refer to standard drawing SD-1-69
All fasteners are $\frac{3}{4}$ " diameter High Strength Bolts



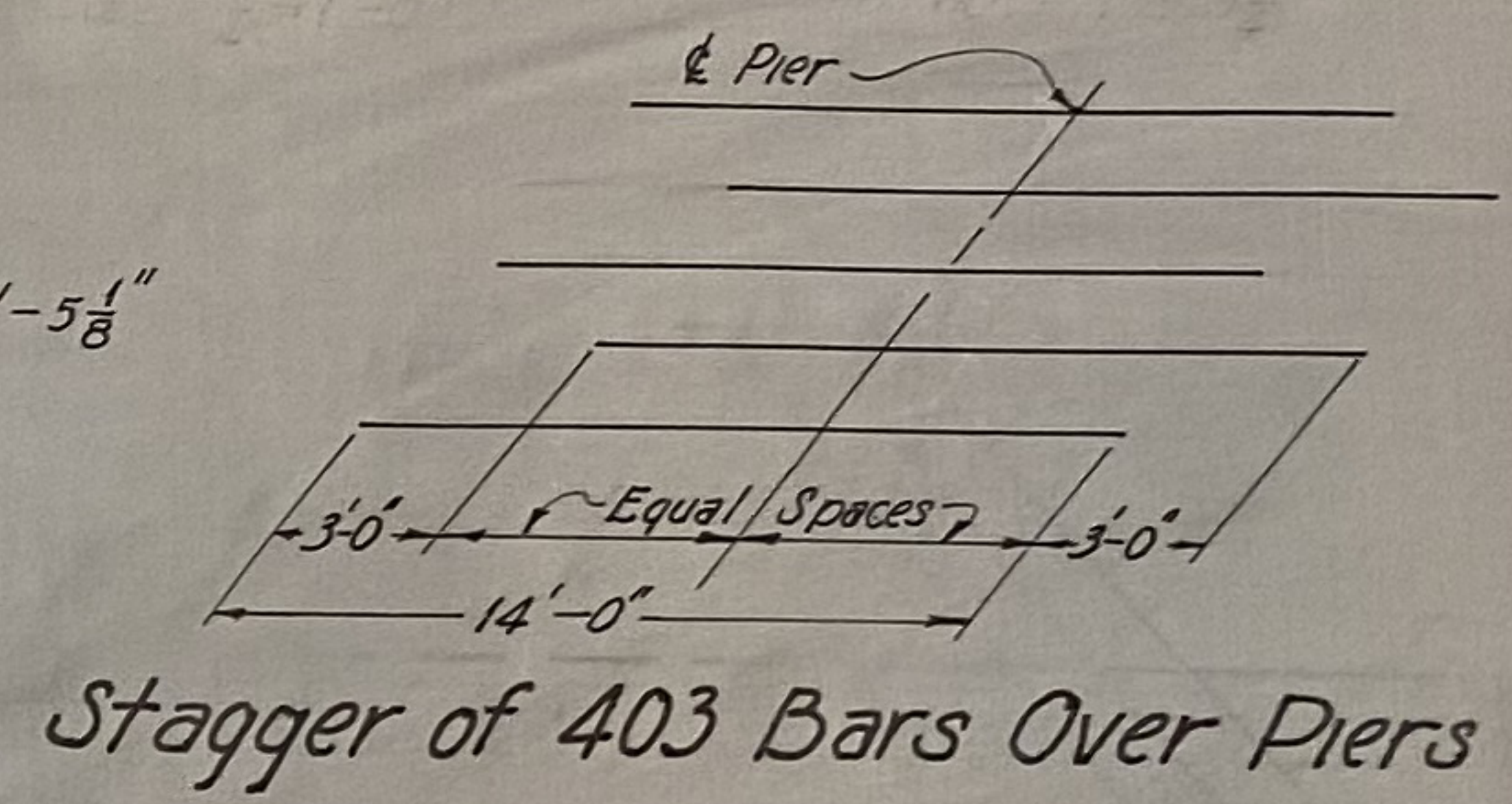
Details of Beam Splice
(Optional)



Deck Reinforcing Plan



Structural Layout



Stagger of 403 Bars Over Piers

Bar Mark	No. Set	Total	Weight	Shape	Length
*605	26 4	104	2731 lbs.	Straight	6'-0" to 28'-11"
604	53 2	106	3556 lbs.	"	22'-4"
601-A	6 4	24	216 lbs.	"	6'-0"
401	32 3	96	1619 lbs.	"	25'-3"
401	38 3	114	1923 lbs.	"	25'-3"
403	31 2	62	580 lbs.	"	14'-0"
TOTAL			10,625 lbs.		

* Series Bars (11" Increments)

Ohio Department of Transportation
Division of Highways

Superstructure Detail

Bridge No. Hur-099-16
Over Seymour Creek

Scale - As Shown

Designed Drawn Traced Reviewed
E.C. E.C. E.C.

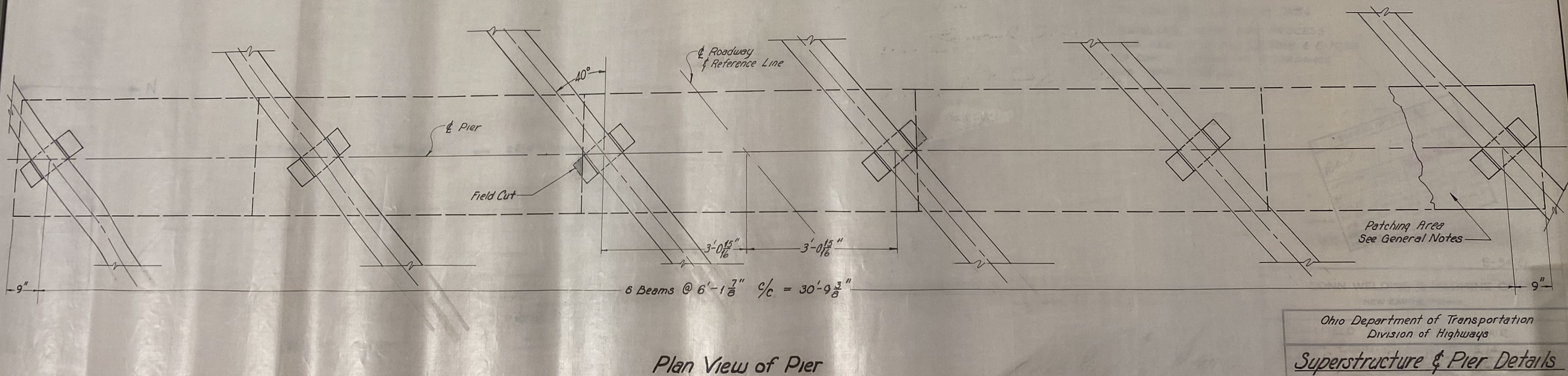
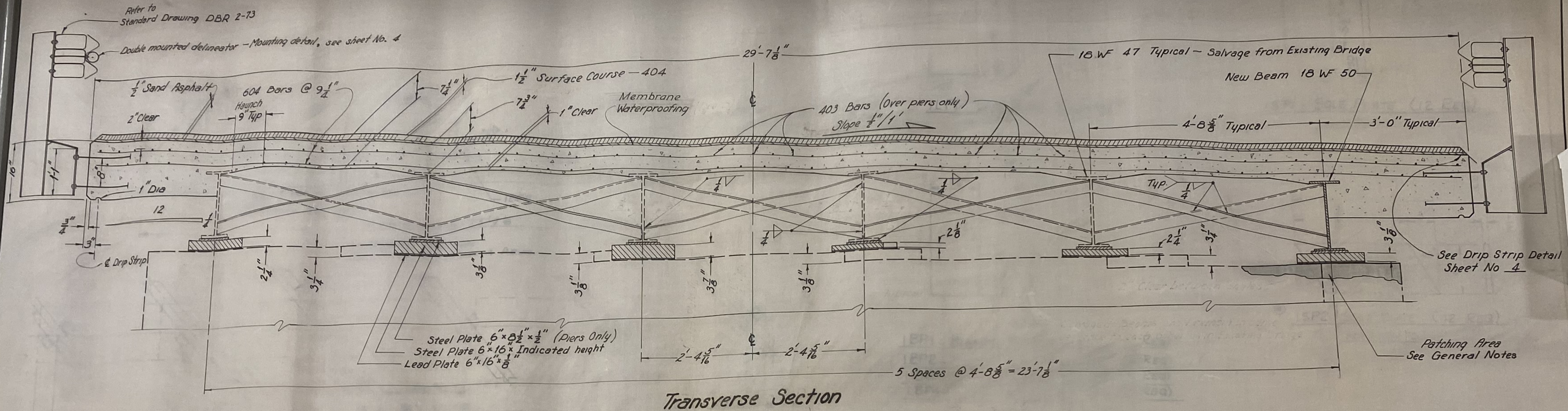
SUPERSTRUCTURE DETAIL

District 3 Capital Programs Workplan Group

FED. RD. DIVISION	STATE	PROJECT
2	OHIO	

Hur-099-15.14

6/6



Ohio Department of Transportation
Division of Highways

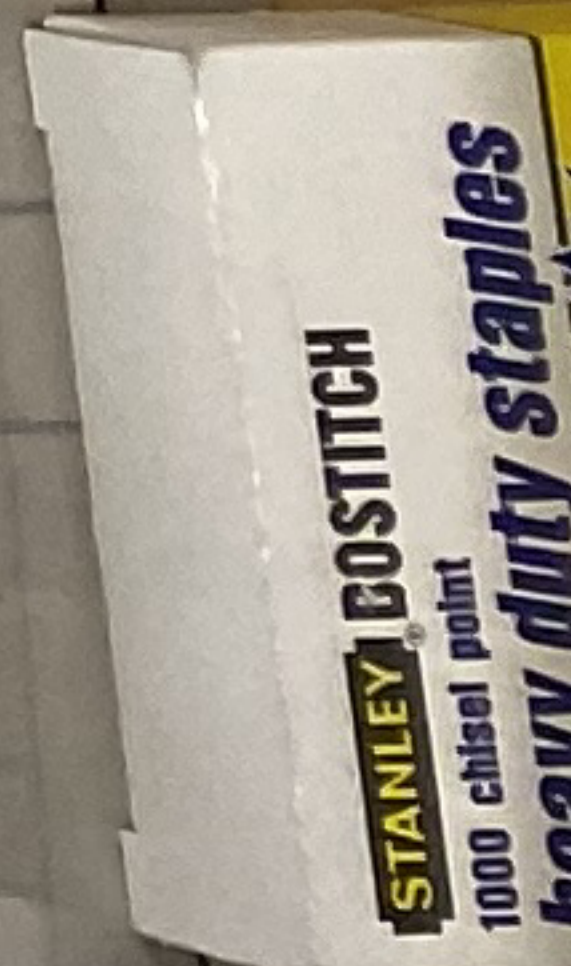
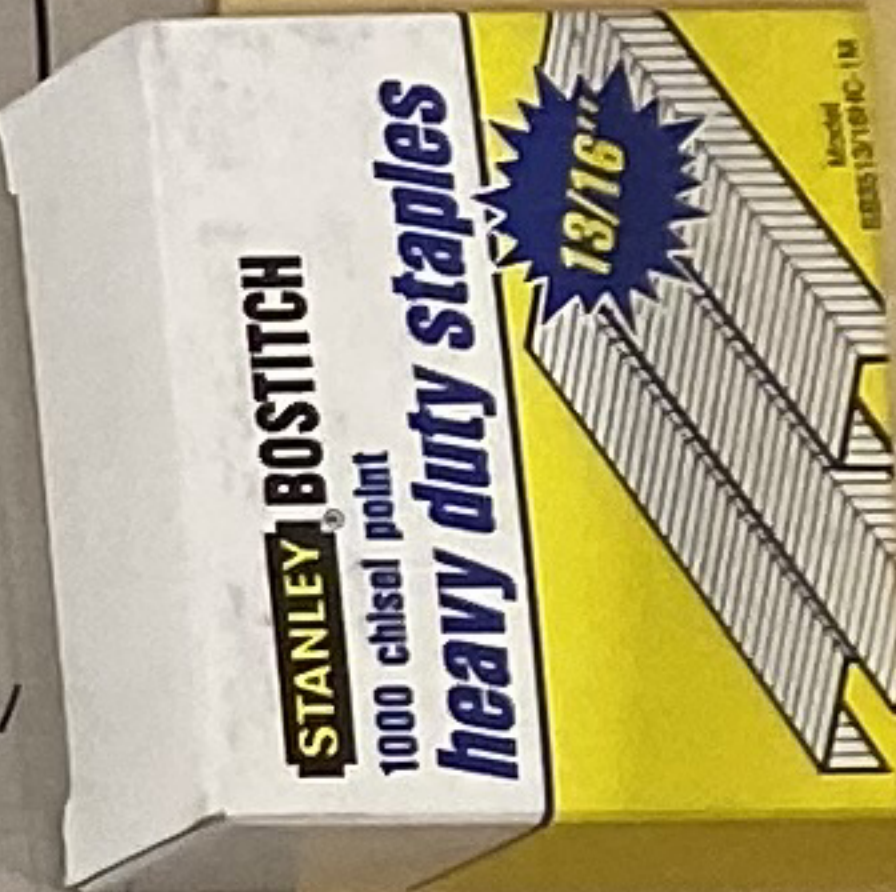
Superstructure & Pier Details

Bridge No. Hur-099-1604
Over Seymour Creek

Sta 847+30.65

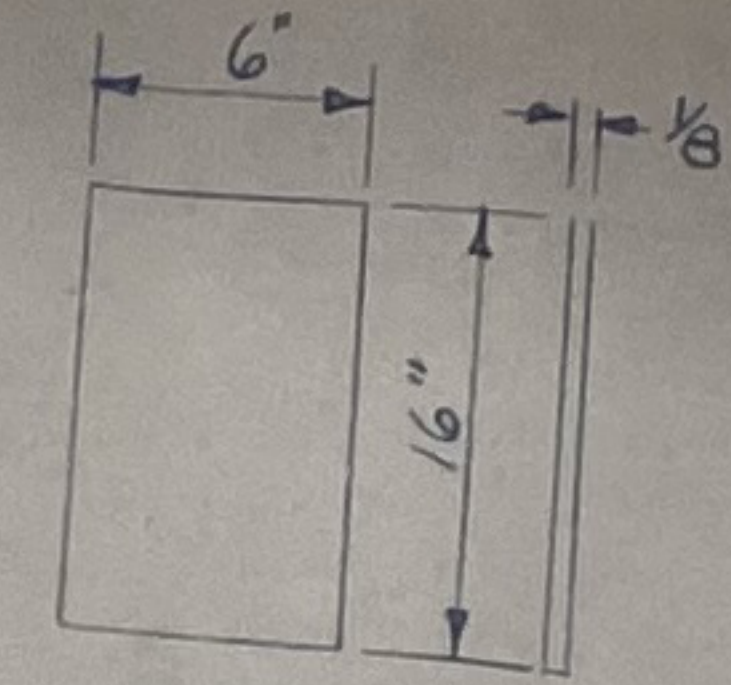
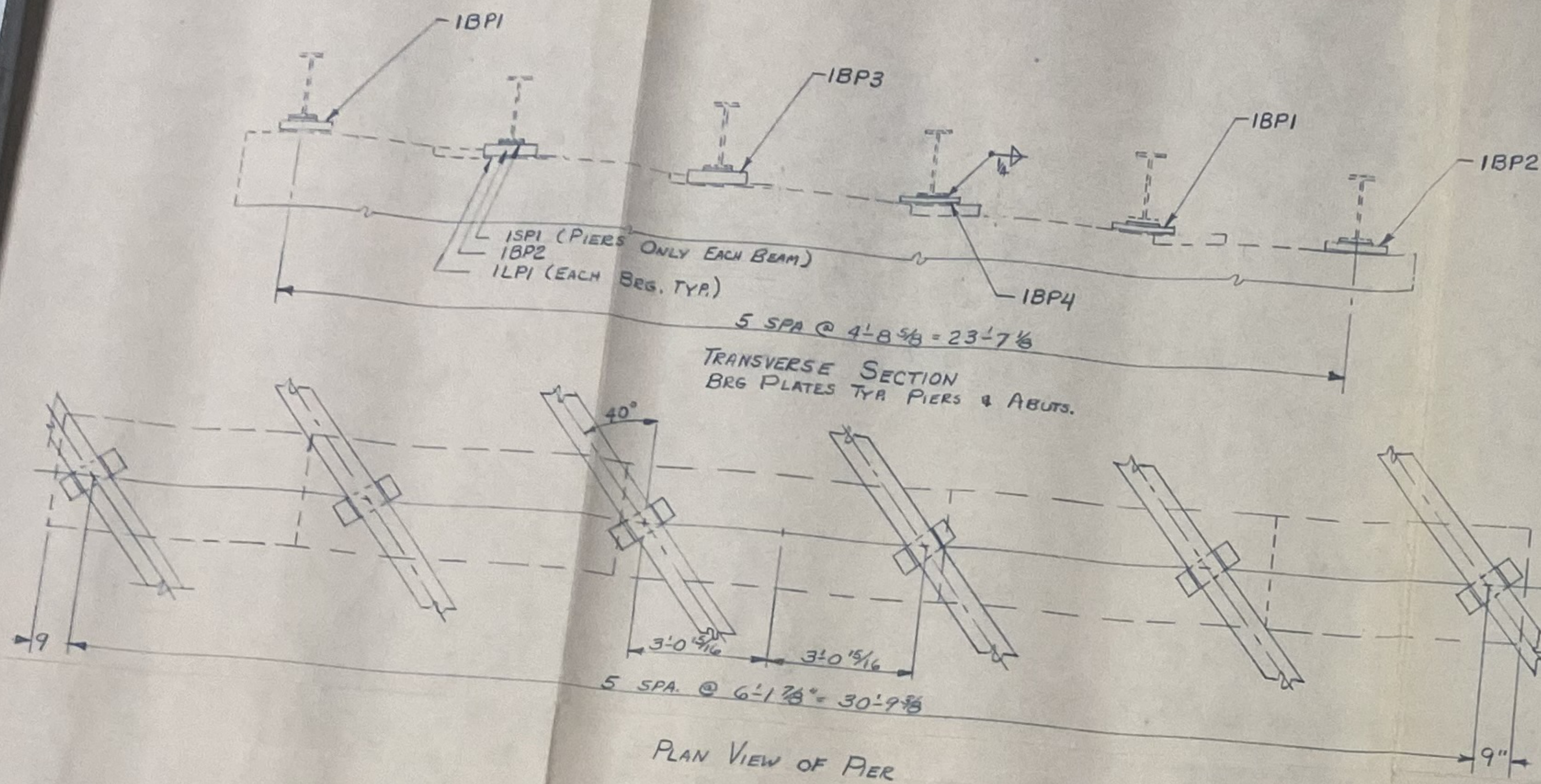
Designed FEC	Drawn ERE	Traced R.L.P.	Checked	Reviewed	Date
-----------------	--------------	------------------	---------	----------	------

SUPERSTRUCTURE & PIER DETAILS

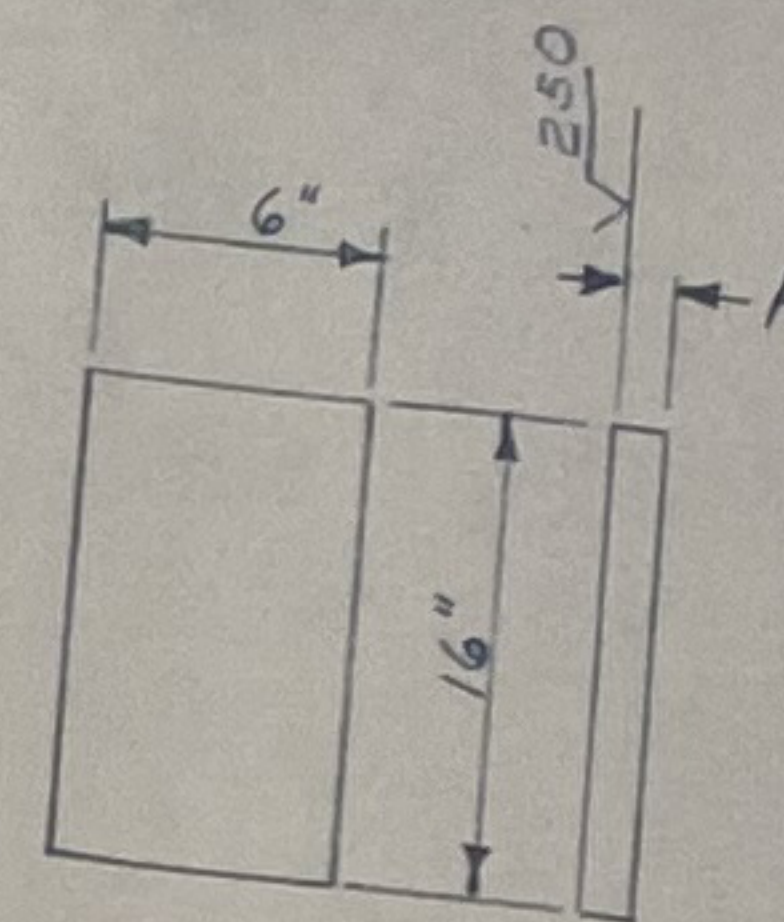


District 3 Capital Programs Workplan Group

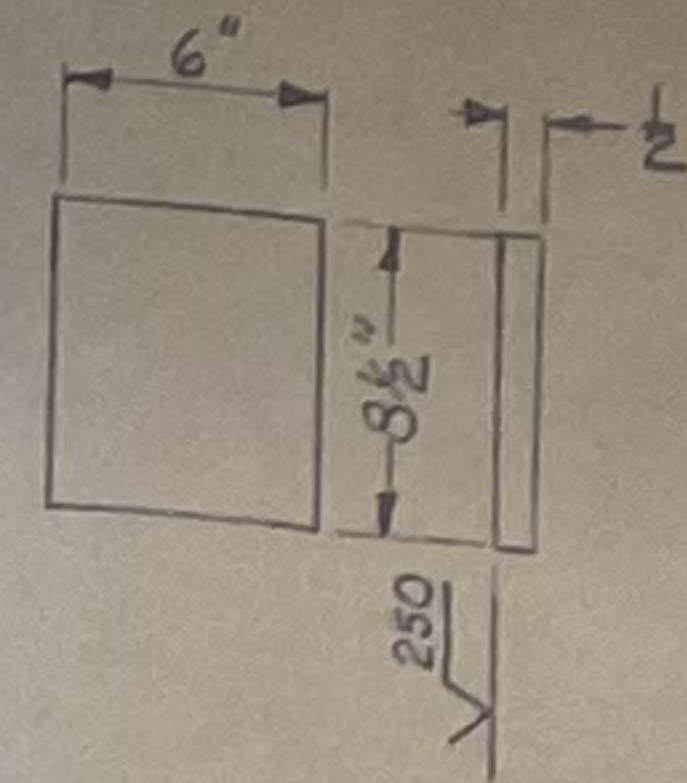
Team Up ODOT 20



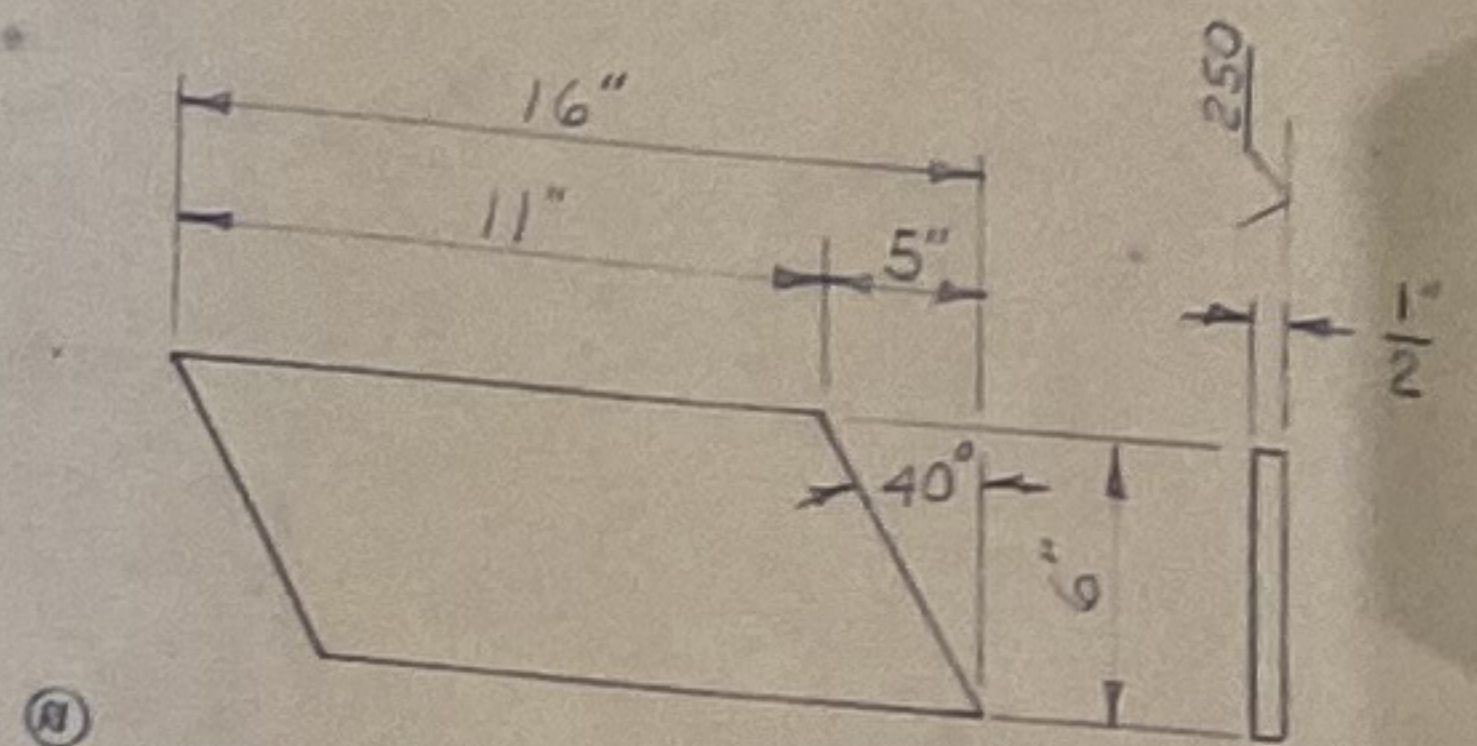
ILP1- LEAD PLATE (24 REQ)



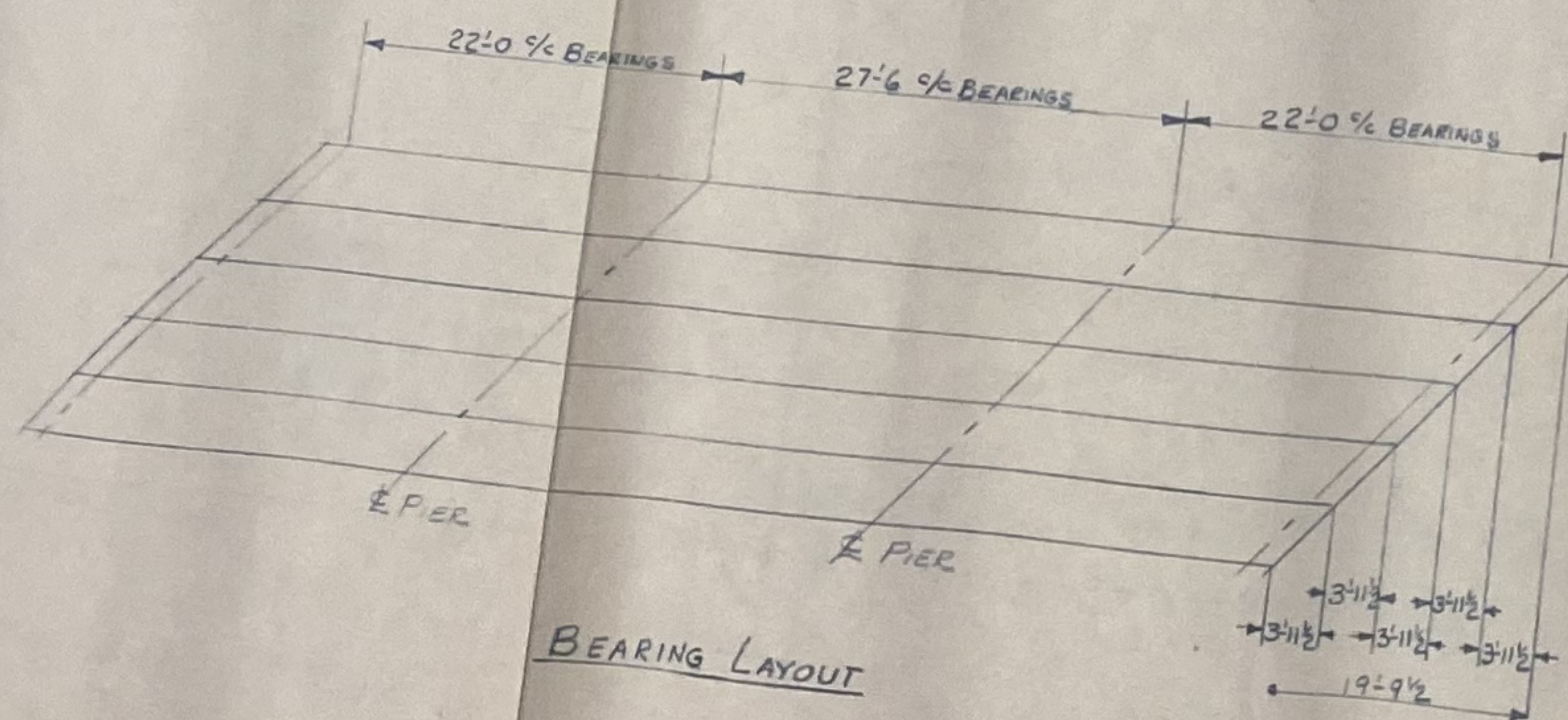
- IBP1- BEARING PLATE - A = 2 1/4 (8 REQ)
- IBP2- " " - A = 3 1/8 (8 REQ)
- IBP3- " " - A = 3 1/8 (4 REQ)
- IBP4- " " - A = 2 1/8 (4 REQ)



ISPI - SOLE PLATE (12 REQ)



ISP2 - SOLE PLATE (12 REQ)
ABUTMENTS



SHOP NOTES

1. STEEL TO CONFORM TO ASTM A36
2. MANUAL SHIELDED METAL ARC PROCESS ELECTRODES ARE AWS A5.1, E-7018 & E-7028
3. ONE SHOP COAT OF PAINT IN ACCORDANCE WITH OHIO SPEC. 708.15

BUREAU OF BRIDGES
Robert B. Hoffman, Engineer of Bridges

APPROVED AS NOTED
NOT APPROVED

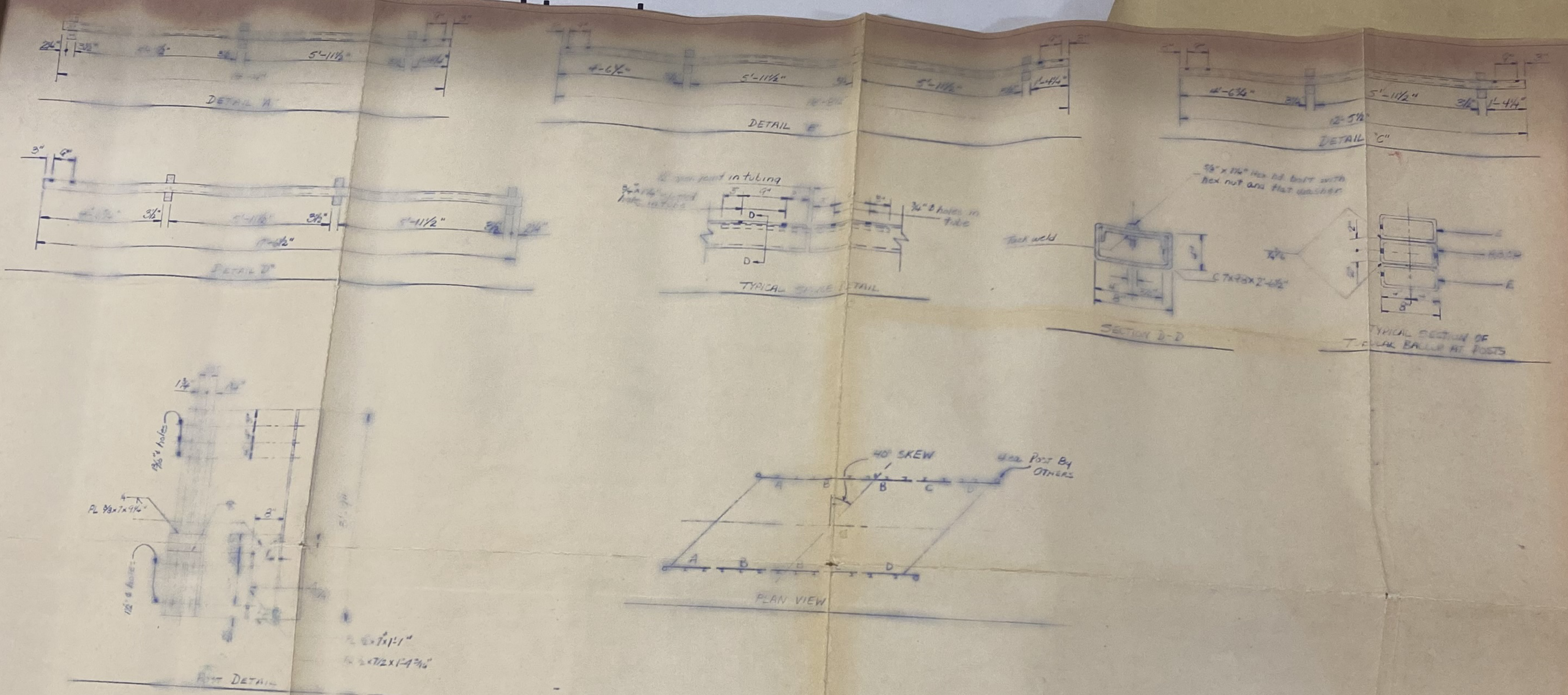
For general consultation with design, see and specifications only. Does not relieve contractor from responsibility for errors or omissions.

E-340
CONN WELDING & MACHINE CO.
NEW CASTLE, PENNA.

RIDGEFIELD TWP. BRIDGE REPAIR
HURON COUNTY - HUR-99-15.14
BEARING DETAILS & LAYOUT
PROJ. 438 (1974)

REVISIONS	SCALE	NTS.	DATE
① ADDED ISP2 DETAIL W/AJ			1-21-74
	TRACED		APPROVED
	CKD. BY A.V.		No. 1

District 3 Capital Programs Workplan Group



Item	Description	Length	Remarks
1	TS 8" x 1/2" x 18'	18'	See Detail A
2	do	12'-3 1/2"	do
3	do	17'-0"	do
4	do	5'-0"	do
5	3/8" Hex Hd Bolt with nut & flat washer	See Typ. Section of railing at posts	
6	C TX 98 X .1875	2'-11 1/2"	See Typ. Section of railing at posts
7	3/8" Hex Hd Bolt with nut & flat washer	1'-11 1/2"	do
8	H 6 X 25	5'-0"	See Post Detail
9	PL 3/8" x 7' x 9 1/2"	See Post Detail	
10	PL 1/2" x 7' x 1 1/2"	do	
11	PL 1/2" x 7' x 1 1/2"	do	

NOTES:
 All steel to be A-36, A-36
 Bolt to be A-307, A-307
 All material to be hot dipped galvanized after fabrication per A-123, A-123
 Post No. 14 = 14722 (with tubular back) (see spec)

BUREAU OF BRIDGES

Blair B. [Signature] Engineer of Bridges

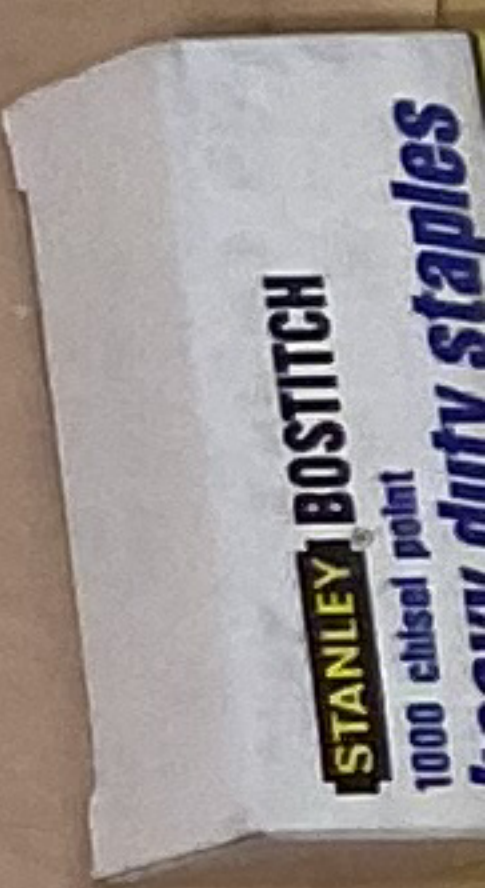
APPROVED [Signature] 10/13/94

APPROVED AS NOTED

NOT APPROVED

For general conformance with design plans and specifications only. Does not relieve contractor from responsibility for errors or omissions.

APPROVED
 DATE OCT 13 1994





~~221-H~~
OK

