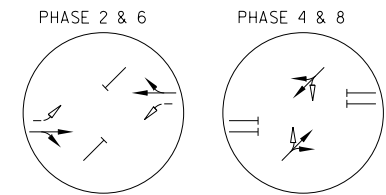
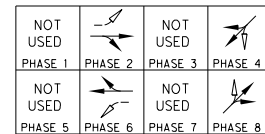
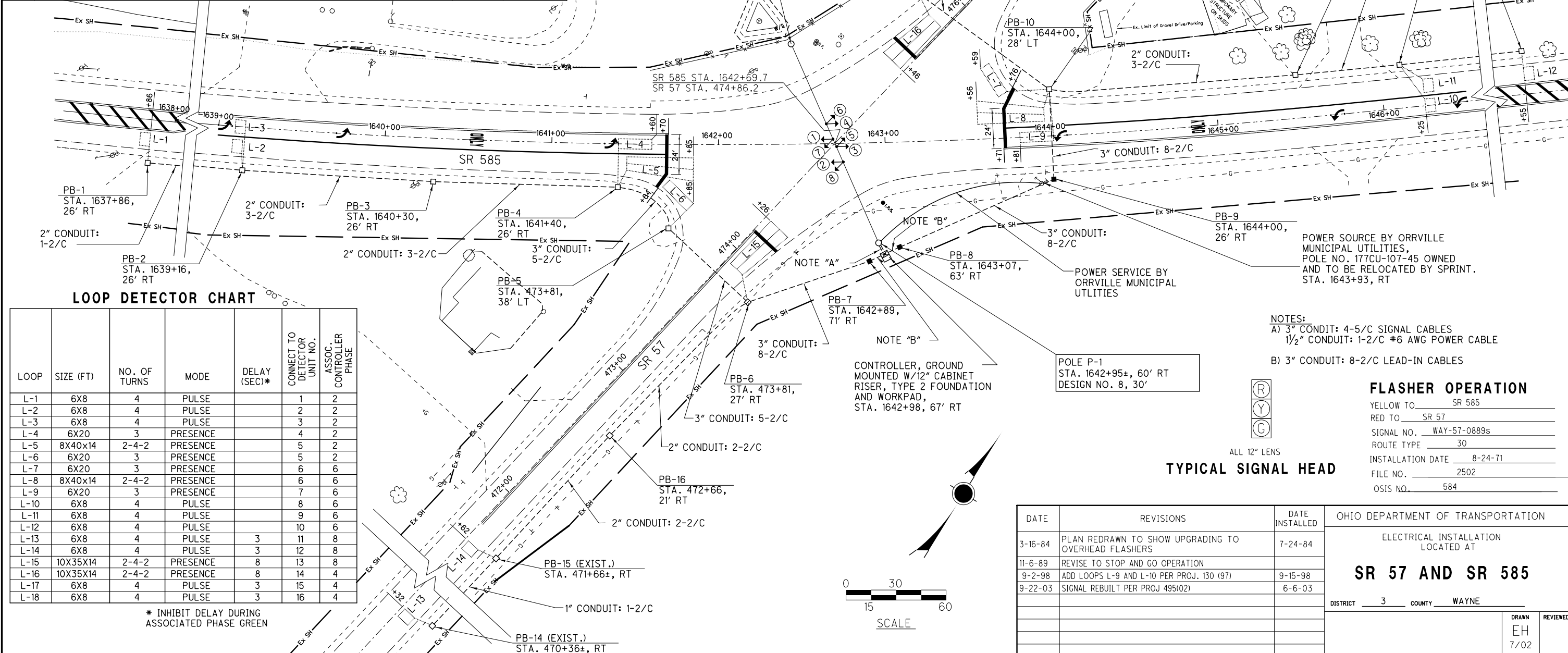


TRAFFIC SIGNAL GENERAL SUMMARY

ITEM	DESCRIPTION	QTY.	UNITS
603	4" CONDUIT, TYPE E	200	L.F.
625	CONDUIT, 1-1/2", 713.07	8	L.F.
625	CONDUIT, 2", 713.07	1265	L.F.
625	CONDUIT, 3", 713.07	468	L.F.
625	PULL BOX, 713.08, 18"	17	EACH
625	GROUND ROD, AS PER PLAN	3	EACH
632	VEHICULAR SIGNAL HEAD, 3 SECTION, 12" LENS, 2-WAY, AS PER PLAN	4	EACH
632	DETECTOR LOOP, AS PER PLAN	18	EACH
632	LOOP DETECTOR UNIT, DELAY AND EXTENSION TYPE, AS PER PLAN	16	EACH
632	TETHER WIRE	131	L.F.
632	MESSENGER WIRE, 7-STRAND, 3/8" DIAMETER WITH ACCESSORIES	131	L.F.
632	SIGNAL CABLE, 5 CONDUCTOR, NO. 14 AWG	536	L.F.
632	STRAIN POLE FOUNDATION, AS PER PLAN	2	EACH
632	LOOP DETECTOR LEAD-IN CABLE, 2 CONDUCTOR, NO. 14 AWG	6016	L.F.
632	POWER CABLE, 2 CONDUCTOR, NO. 6 AWG	27	L.F.
632	POWER CABLE, 3 CONDUCTOR, NO. 6 AWG	35	L.F.
632	POWER SERVICE, AS PER PLAN	1	EACH
632	STRAIN POLE, TYPE TC-81.10, DESIGN 8, 30'	2	EACH
632	SIGNALIZATION, MISC.: METER BASE, 125 AMP, WITH BYPASS	1	EACH
633	CONTROLLER, ACTUATED, 8-PHASE, SOLID STATE DIGITAL MICROPROCESSOR, AS PER PLAN, WITH INTERNAL TIME BASE COORDINATION	1	EACH
633	CONCRETE FOR CABINET FOUNDATION	1.85	C.Y.
633	CONTROLLER WORKPAD	12.5	S.F.



SIGNAL PHASING DIAGRAM



LOOP DETECTOR CHART

LOOP	SIZE (FT)	NO. OF TURNS	MODE	DELAY (SEC)*	CONNECT TO DETECTOR UNIT NO.	ASSOC. CONTROLLER PHASE
L-1	6X8	4	PULSE		1	2
L-2	6X8	4	PULSE		2	2
L-3	6X8	4	PULSE		3	2
L-4	6X20	3	PRESENCE		4	2
L-5	8X40X14	2-4-2	PRESENCE		5	2
L-6	6X20	3	PRESENCE		5	2
L-7	6X20	3	PRESENCE		6	6
L-8	8X40X14	2-4-2	PRESENCE		6	6
L-9	6X20	3	PRESENCE		7	6
L-10	6X8	4	PULSE		8	6
L-11	6X8	4	PULSE		9	6
L-12	6X8	4	PULSE		10	6
L-13	6X8	4	PULSE	3	11	8
L-14	6X8	4	PULSE	3	12	8
L-15	10X35X14	2-4-2	PRESENCE	8	13	8
L-16	10X35X14	2-4-2	PRESENCE	8	14	4
L-17	6X8	4	PULSE	3	15	4
L-18	6X8	4	PULSE	3	16	4

* INHIBIT DELAY DURING ASSOCIATED PHASE GREEN

- NOTES:
 A) 3" CONDUIT: 4-5/C SIGNAL CABLES
 1/2" CONDUIT: 1-2/C #6 AWG POWER CABLE
 B) 3" CONDUIT: 8-2/C LEAD-IN CABLES

FLASHER OPERATION

YELLOW TO SR 585
 RED TO SR 57
 SIGNAL NO. WAY-57-0889s
 ROUTE TYPE 30
 INSTALLATION DATE 8-24-71
 FILE NO. 2502
 OSIS NO. 584

TYPICAL SIGNAL HEAD



ALL 12" LENS

DATE	REVISIONS	DATE INSTALLED	OHIO DEPARTMENT OF TRANSPORTATION
3-16-84	PLAN REDRAWN TO SHOW UPGRADING TO OVERHEAD FLASHERS	7-24-84	ELECTRICAL INSTALLATION LOCATED AT SR 57 AND SR 585 DISTRICT 3 COUNTY WAYNE
11-6-89	REVISE TO STOP AND GO OPERATION	9-15-98	
9-2-98	ADD LOOPS L-9 AND L-10 PER PROJ. 130 (97)	6-6-03	
9-22-03	SIGNAL REBUILT PER PROJ 495(02)		



DESIGN FILE: I:\FIELD\NVA\ELECTRICAL\SIGNAL\DCN\W57&585.dgn
 WORKSTATION: rronev DATE: 5/4/2011